

# DISPLACEMENT TRACKING MATRIX — NIGERIA EMERGENCY TRACKING TOOL (ETT)

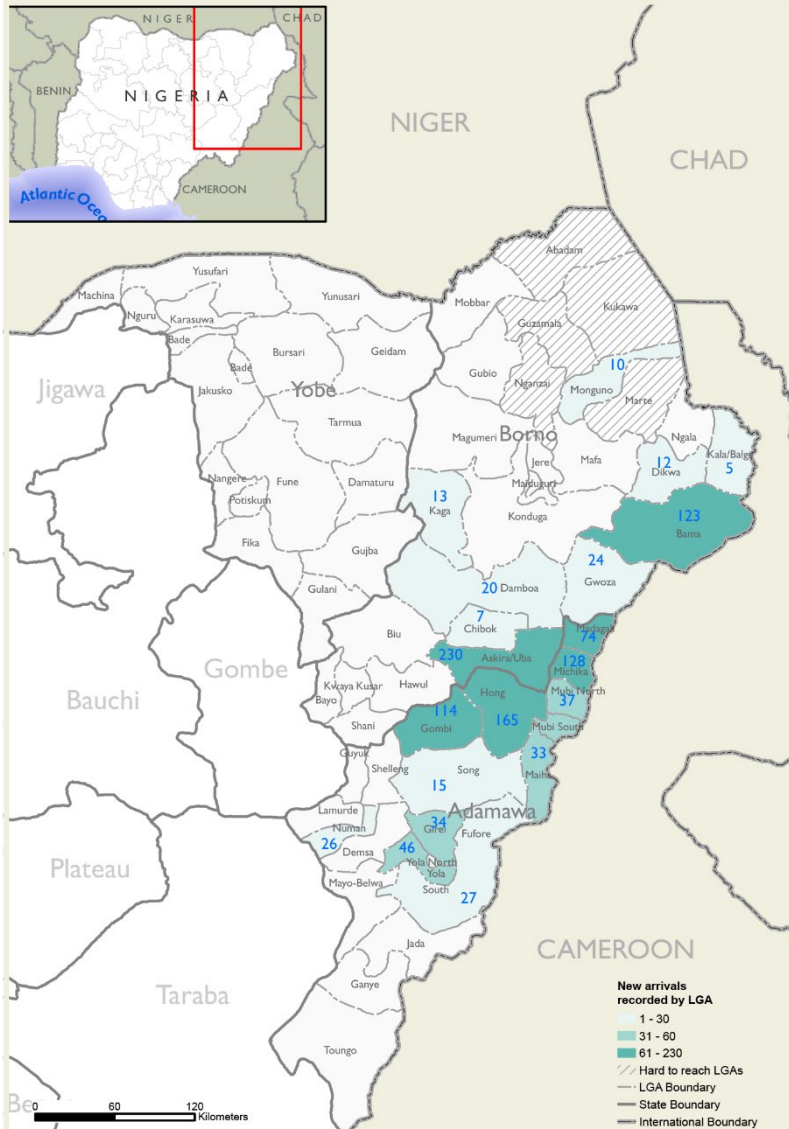
SUMMARY OF MOVEMENTS IN BORNO, ADAMAWA AND YOBE STATES, 1 – 7 April 2024

DASHBOARD: 374

DATA COLLECTION: Week 14, 2024

DATE OF PUBLICATION: 11 April 2024

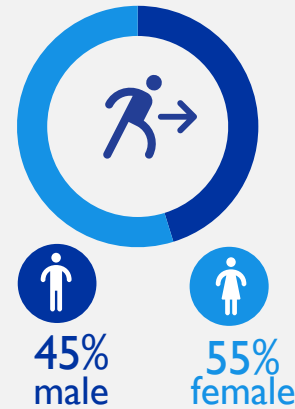
## OVERVIEW OF DISPLACEMENTS



### KEY FIGURES



### GENDER BREAKDOWN



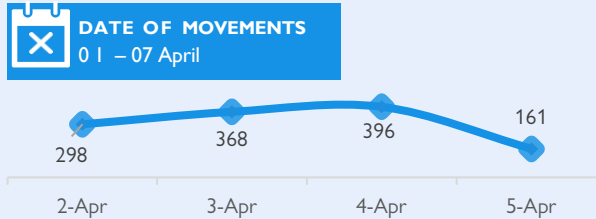
### METHODOLOGY

The DTM Emergency Tracking Tool (ETT) is deployed to track and collect information on large and sudden population movements, provide frequent updates on the scale of displacement and quantify the affected population when needed. As a sub-component of the mobility tracking methodology in Nigeria, ETT utilizes direct observations and a broad network of key informants to capture the best estimates of the affected population per location, enabling targeted humanitarian response planning.

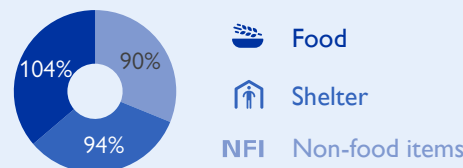
### LIMITATIONS

The ETT figures reported are not cumulative of all the affected persons thus far but rather provide a snapshot of the current displacement situation on the date indicated. The data and information reported on this dashboard are related solely to the movements caused by the triggers on page two between 1 – 7 April.

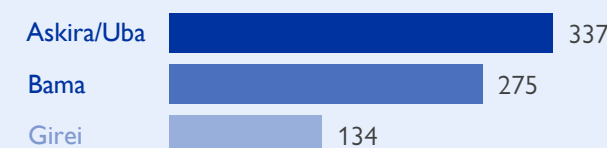
### DISPLACEMENT EVOLUTION



### TOP REPORTED NEEDS\*



### TOP AREAS OF ORIGIN



### ALERT SUMMARY

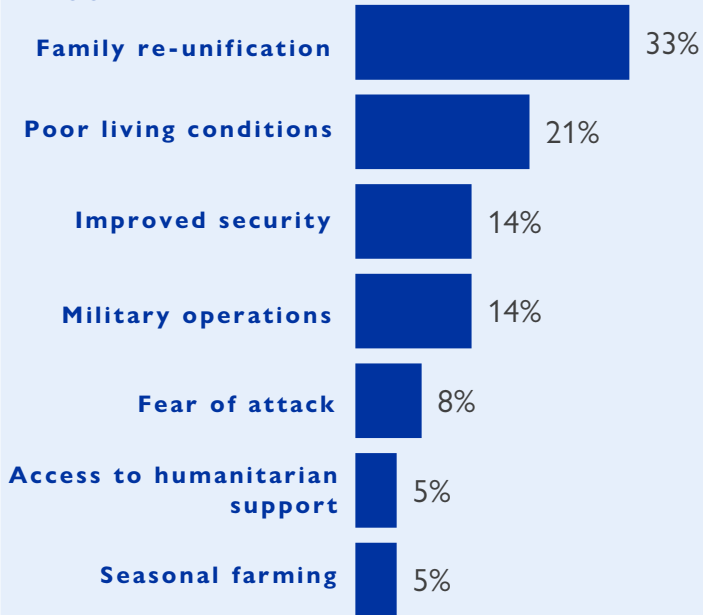
Between 1 and 7 April 2024, a total of 1,223 new arrivals were recorded at locations in Adamawa and Borno states. The new arrivals were recorded at locations in Askira/Uba, Bama, Chibok, Damboa, Dikwa, Gwoza, Kaga, Kala Balge, and Monguno Local Government Areas (LGAs) of the most conflict-affected Borno State, and in Fufore, Girei, Gombi, Hong, Madagali, Maiha, Michika, Mubi North, Mubi South, Numan, Song, Yola North and Yola South LGAs of Adamawa State.

ETT assessments identified the following movement triggers: family re-unification (407 individuals or 33%), poor living conditions (261 individuals or 21%), improved security (176 individuals or 14%), fear of attack (175 individuals or 14%), military operations (94 individuals or 8%), access to humanitarian services (56 individuals or 5%) and seasonal farming (54 individuals or 5%).

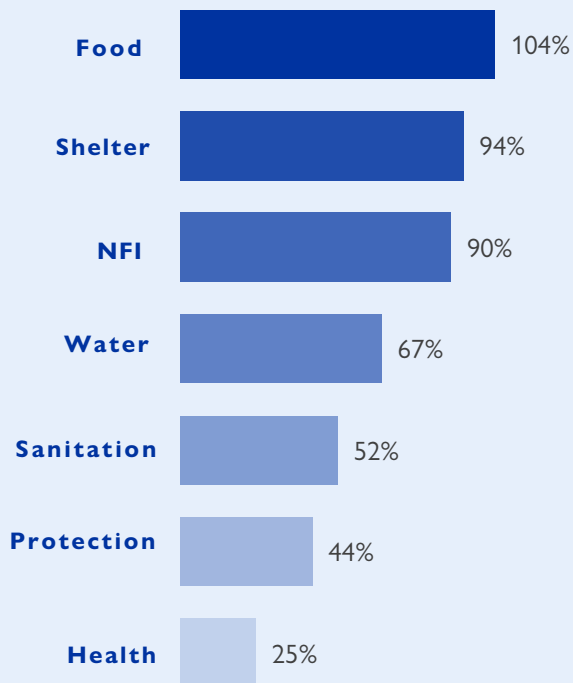
This map is for illustration purposes only. Names and boundaries on this map do not imply official endorsement or acceptance by IOM.

\*Multiple-choice response

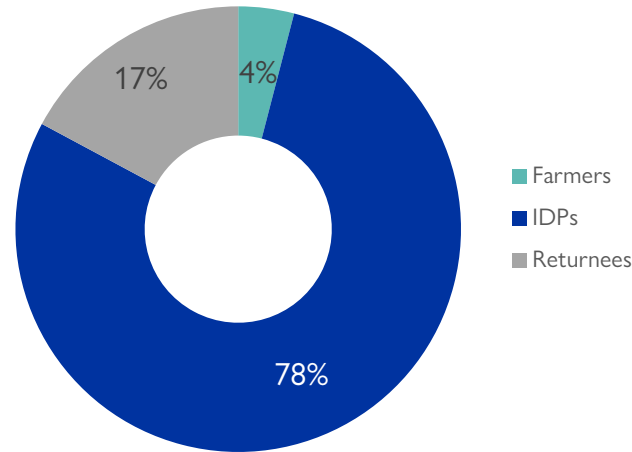
### PERCENTAGE OF INDIVIDUALS BY MOVEMENT TRIGGER



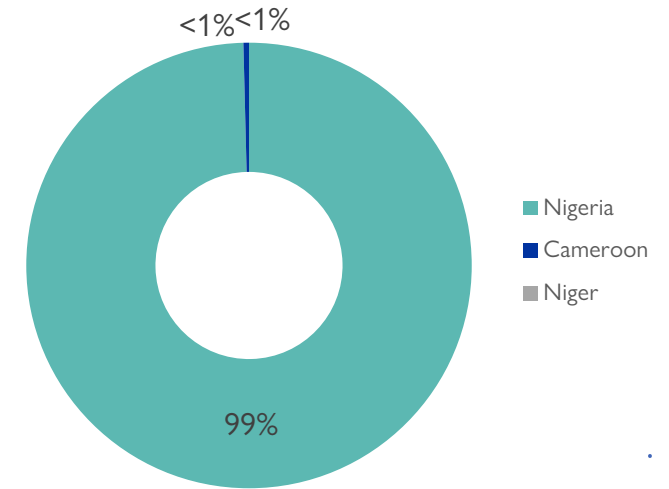
### NEEDS EVOLUTION\*



### ARRIVING POPULATION



### COUNTRY OF DEPARTURE OF THE POPULATION



### NEW ARRIVALS SCREENING BY NUTRITION PARTNERS



**79 MUAC**

Green: 65

Yellow: 7

Red: 7

Children (6 – 59 months)  
Screened for malnutrition.  
Category of screened children.

### MALNUTRITION SCREENING SUMMARY OF THE NEW ARRIVALS (CHILDREN 6 – 59 MONTHS)

Between 1 and 7 April 2024, an exhaustive nutrition screening using Mid-Upper Arm Circumference (MUAC) and oedema for acute malnutrition was conducted by sector partners for 79 children of 6-59 months. Of the 79 children screened, the MUAC reading indicated that seven were recorded in the red category, seven in the yellow category and 65 in the green category. No case of oedema was reported in the seven LGAs assessed.

Among the 79 children screened, 29 arrived from neighbouring countries (4 in Monguno and 25 in Mobbar); of all the 29 children measured; 23 were in green, six were in yellow and none in the red category. All children found with acute malnutrition have been admitted to the treatment programme.

LGA	MUAC Categories						Total
	Green (≥12.5cm)		Yellow (11.5cm – 12.5cm)		Red (<11.5cm)		
	Inaccessible	Accessible	Inaccessible	Accessible	Inaccessible	Accessible	
Bama	35	0	0	0	5	0	40
Dikwa	4	0	0	0	1	0	5
Gwoza	3	0	1	0	1	0	5
Mobbar	0	19	0	6	0	0	25
Monguno	0	4	0	0	0	0	4
<b>Total</b>	<b>42</b>	<b>23</b>	<b>1</b>	<b>6</b>	<b>7</b>	<b>0</b>	<b>79</b>

Please note, the data presented above are not surveillance results and should be interpreted with caution.

■ Nourished

■ Moderate Acute Malnutrition (MAM)

■ Severe Acute Malnutrition (SAM)

\*Multiple-choice response

**DISPLACEMENT BREAKDOWN — only the movements with 13 persons and above are listed below.**

State	Arrival location		Movement location			Number of individuals		
	LGA	Ward	State	LGA	Ward			
Adamawa	Fufore	Pariya	Adamawa	Yola South	Adarawo	27		
	Girei	Gereng	Adamawa	Gombi	Garkida	34		
	Gombi	Gombi North	Gombi North	Adamawa	Girei	Damare	13	
				Borno	Askira / Uba	Dille / Huyum	33	
				Adamawa	Girei	Girei li	22	
	Hong	Gombi South	Gombi South	Borno	Askira / Uba	Ngulde	46	
				Adamawa	Garaha	Hong	Shangui	84
					Uba	Girei	Damare	38
	Madagali	Maiha	Maiha	Adamawa	Kwarhi	Gude	43	
					Wwula	Mubi North	Vimtim	27
					Gulak	Adamawa	Michika	Futudou / Futules
	Michika	Duhu/ Shuwa	Duhu/ Shuwa	Adamawa	Mubi North	Lokuwa	29	
					Sorau B	Fufore	Beti	19
					Maiha Gari	Yola South	Namtari	14
					Bazza Margi	Girei	Gire li	22
					Michika li	Madagali	Wula	21
	Mubi North	Mubi North	Mubi North	Adamawa	Madagali	Madagali	14	
					Michika	Michika	Madzi	19
					Song	Song	Song Waje	18
	Mubi South	Mubi South	Mubi South	Adamawa	Yola South	Bole Yolde Pate	13	
					Muchalla	Askira / Uba	Lassa	16
					Lokuwa	Adamawa	Yola South	Bole Yolde Pate
	Numan	Mujara	Mujara	Adamawa	Madagali	Shelmi / Sukur/ Vapura	19	
Nasarawo					Borno	Gwoza	Hambagda/ Liman Kara/ New Settlement	34
Song	Imburu	Imburu	Adamawa	Guyuk	Dumna	17		
Yola North	Song Gari	Song Gari	Adamawa	Fufore	Ribadu	15		
Yola South	Limawa	Limawa	Taraba	Gashaka	Serti 'A'	17		
Borno	Askira/Uba	Namtari	Borno	Askira / Uba	Husara / Tampul	19		
				Chul / Rumirgo	Borno	Chibok	Mbalala	30
				Dille / Huyum	Adamawa	Gombi	Gombi North	33
				Zadawa/Hausari	Zamfara	Girei	Girei I	37
				Uba	Borno	Anka	Magaji	37
	Bama	Wamdeo/Giwi	Wamdeo/Giwi	Borno	Askira / Uba	Kopa / Multhafu	76	
					Borno	Bama	Mbuliya/Goniri/Siraja	74
	Gwoza	Gwoza	Gwoza	Borno	Gwoza	Sabsabwa/Soye/Bulongu	49	
						Hambagda/ Liman Kara/ New Settlement	13	
	Kaga	Benisheikh	Benisheikh	Borno	Konduga	Jewu / Lamboa	13	
Dambo	Dambo	Dambo	Borno	Dambo	Mulgwai / Kopchi	18		