

ETT Report : No. 294 | 19 — 25 September 2022

NUMBER OF NEW ARRIVALS



NEW ARRIVALS SCREENING BY NUTRITION PARTNERS



289 Children (6 - 59 months) screened for malnutrition

MUAC category of screened children

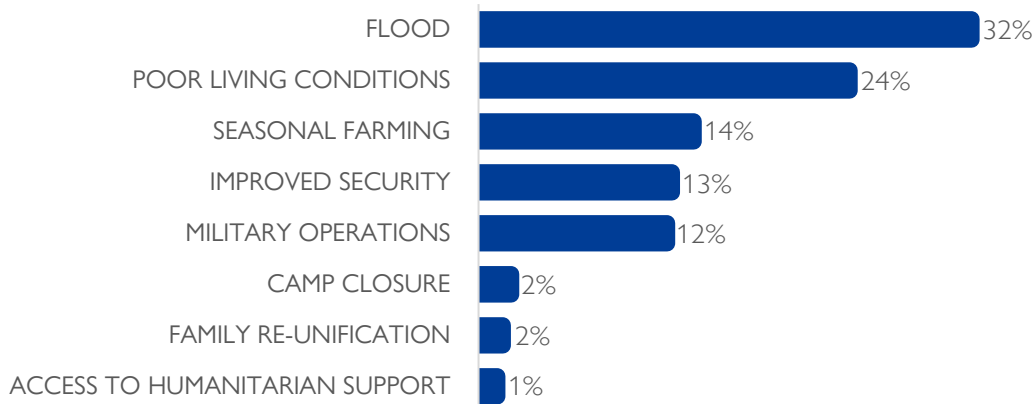


The DTM Emergency Tracking Tool (ETT) is deployed to track and to collect information on large and sudden population movements, provide frequent updates on the scale of displacement and quantify the affected population when needed. As a sub-component of the Mobility Tracking methodology in Nigeria, ETT utilises direct observation and a broad network of key informants to capture best estimates of the affected population per location, enabling targeted humanitarian response planning.

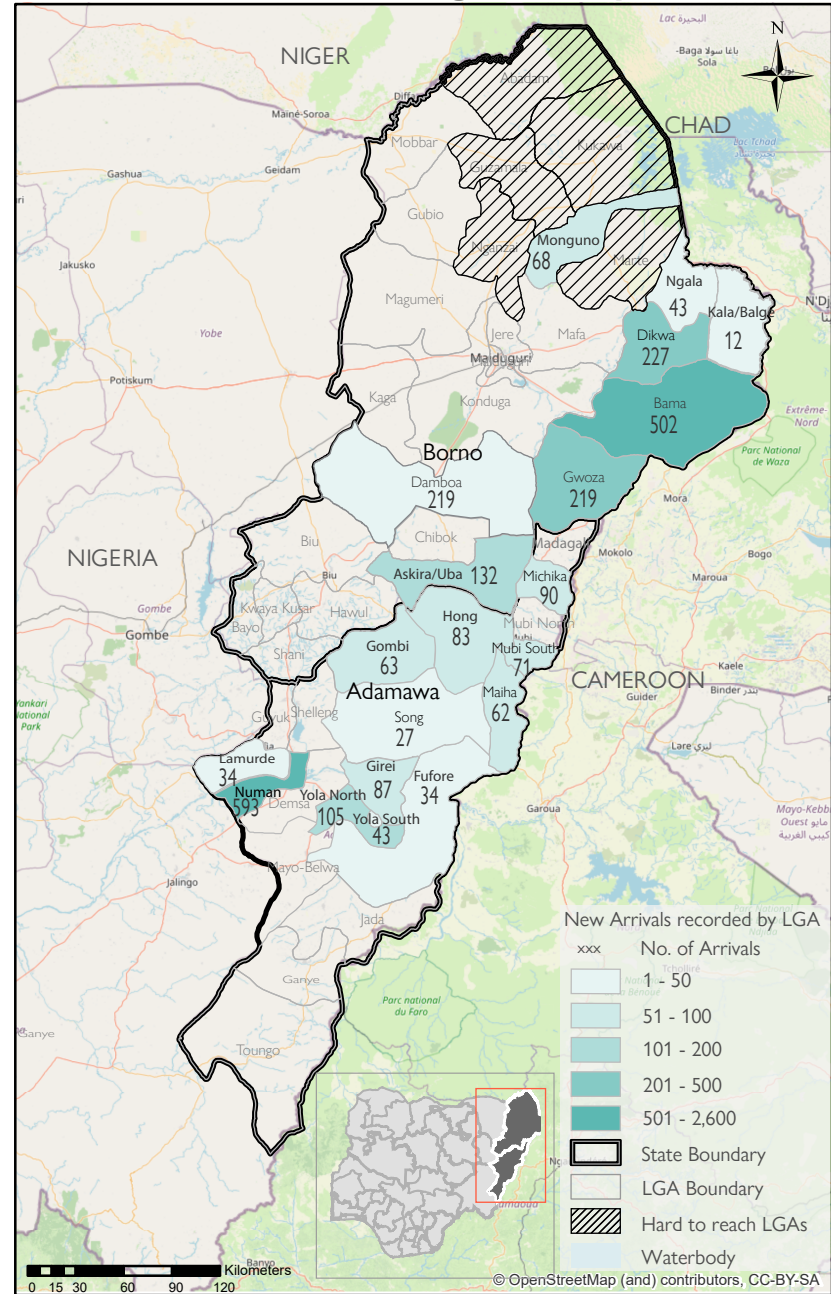
Between 19 and 25 September 2022, a total of 2,535 new arrivals were recorded in locations in Adamawa and Borno States. The new arrivals were recorded at locations in Askira/Uba, Bama, Dikwa, Gwoza, Monguno, Damboa, Ngala and Kala Balge Local Government Areas (LGAs) of the most conflict-affected state of Borno and in Fufore, Gombi, Girei, Hong, Maiha, Michika, Mubi South, Lamurde, Song, Numan, Yola North and Yola South LGAs of Adamawa State.

ETT assessments identified the following movement triggers: floods (813 individuals or 32%), poor living conditions (612 individuals or 24%), seasonal farming (355 individuals or 14%), improved security (319 individuals or 13%), military operations (311 individuals or 12%), camp closure (54 individuals or 2%), family re-unification (40 individuals or 2%) and access to humanitarian support (31 individuals or 1%).

PERCENTAGE OF INDIVIDUALS BY MOVEMENT TRIGGER



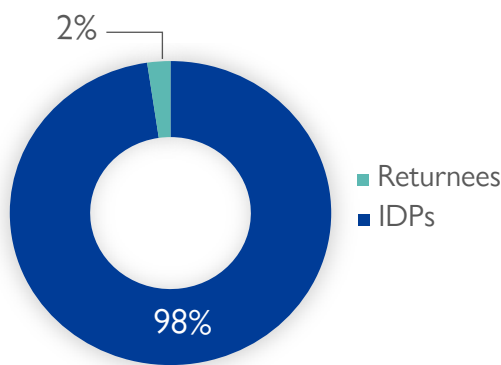
New arrivals registered by LGA



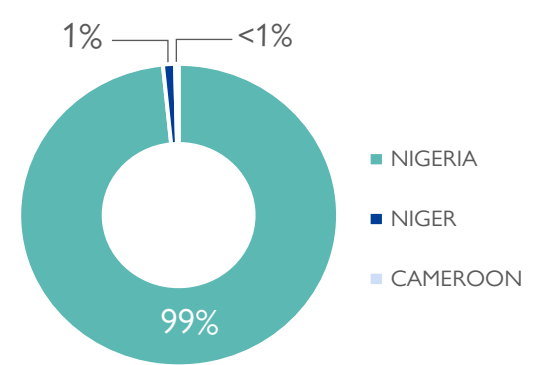
The depiction and use of boundaries, geographic names, and related data shown on this map and included in this report are not warranted to be error-free, nor do they imply a judgment on the legal status of any territory or any endorsement or acceptance of such boundaries by IOM

* Movements in Kala/Balge were captured by ETT outreach staff in the LGA

Affected population



Country of departure of arriving population



SUMMARY OF MAJOR NEW ARRIVALS

Numan: Five hundred and ninety-three (593) new arrivals were recorded in Numan LGA of Adamawa State. Sixty-six per cent of the arrivals were from Lamurde LGA of Adamawa State and 34 per cent of the arrivals were from (Bolki ward) within Numan LGA of Adamawa State. All arrivals were as a result of the floods.

Bama: Five hundred and two (502) new arrivals were recorded in Bama LGA of Borno State. Eighty-nine per cent of the arrivals were from hard-to-reach/inaccessible locations (Dipchari/Jere/Dar-Jamal/Kotembe, Gulumba/Jukkuri/Batra and Lawanti/Malam/Mastari/Abbaram wards) within Bama LGA of Borno State and 11 per cent of the arrivals were from Konduga LGA of Borno State. Forty-five per cent of the movements were triggered by military operations, 44 per cent of the movements were a result of improved security situations in areas of origin and 11 per cent of the movements recorded were a result of the closure of 250 Housing Estate Camp (Dalori II) in Konduga LGA of Borno State.

Dikwa: Two hundred and twenty-seven (227) new arrivals were recorded in Dikwa LGA of Borno State. Eighty-three per cent of the arrivals were from Konduga LGA of Borno State, 14 per cent of the arrivals were from hard-to-reach/inaccessible locations (Sogoma/Afuye and Gajibo wards) within Dikwa LGA of Borno State and 3 per cent of the arrivals were from Bama LGA of Borno State. All movements were triggered by poor living conditions.

Gwoza: Two hundred and nineteen (219) new arrivals were recorded in Gwoza LGA of Borno State. Forty-two per cent of the arrivals were from hard-to-reach/inaccessible locations (Dure/Wala/Warabe, Johode/Chikide/Kughum and Kurana Bassa/Ngoshe - Sama'a wards) within Gwoza LGA of Borno State. Thirty-three per cent of the arrivals were from Konduga LGA of Borno State and 25 per cent of the arrivals were from Bama LGA of Borno State. All movements were triggered by poor living conditions.

Table 1. Details of new arrivals by locations of departure — only movements with at least 21 persons are listed below

Arrival Location			Location of Departure			NO. OF INDIVIDUALS
STATE	LGA	WARD	STATE	LGA	WARD	
ADAMAWA	FUFORE	GURIN	ADAMAWA	MUBI SOUTH	LAMORDE	34
	GIREI	GERENG	ADAMAWA	GIREI	GERENG	45
		GIREI II	ADAMAWA	MADAGALI	HYAMBULA	23
	GOMBI	GOMBI NORTH	ADAMAWA	LAMURDE	WADUKU	30
		GOMBI SOUTH	ADAMAWA	HONG	GAYA	33
	HONG	BANGSHIKA	ADAMAWA	GOMBI	GOMBI NORTH	27
		UBA	ADAMAWA	MICHIKA	MICHIKA I	43
	LAMURDE	WADUKU	ADAMAWA	GUYUK	DUMNA	34
	MICHIKA	MINKISI/WURO NGIKI	ADAMAWA	SONG	SONG WAJE	21
		MODA/DLAKA/GHENJUWA	ADAMAWA	FUFORE	FUFORE	32
	MUBI SOUTH	LAMORDE	BORNO	ASKIRA UBA	KOPA / MULTHAFU	41
		MUJARA	ADAMAWA	MADAGALI	HYAMBULA	30
	NUMAN	BOLKI	ADAMAWA	NUMAN	BOLKI	199
		GAMADIO	ADAMAWA	LAMURDE	WADUKU	394
	SONG	ZUMO	BORNO	GWOZA	HAMBAGDA/LIMAN KARA/NEW SETTLEMENT	27
	YOLA NORTH	JAMBTU	ADAMAWA	SONG	KILANGE FUNA	29
	YOLA SOUTH	BOLE YOLDE PATE	ADAMAWA	LAMURDE	LAFIYA	27
ADAMAWA			NUMAN	IMBURU	23	
NAMTARI		ADAMAWA	YOLA NORTH	LIMAWA	44	
BORNO	ASKIRA/UBA	LASSA	ADAMAWA	MUBI SOUTH	LAMORDE	41
		UBA	BORNO	ASKIRA UBA	HUSARA/TAMPUL UBA	41 32
	BAMA	BUDUWA / BULA CHIRABE	BORNO	BAMA	DIPCHARI/JERE/DAR-JAMAL/KOTEMBE	220
			BORNO	KONDUGA	DALORI/WANORI	54
		SHEHURI/HAUSARI/MAIRI	BORNO	BAMA	DIPCHARI/JERE/DAR-JAMAL/KOTEMBE GULUMBA/JUKKURI/BATRA	197 28
	DAMBOA	DAMBOA	BORNO	DAMBOA	MULGWAI/KOPCHI	40
	DIKWA	DIKWA	BORNO	KONDUGA	AUNO/CHABBOL	189
	GWOZA	GWOZA WAKANE/BULABULIN	BORNO	GWOZA	DURE/WALA/WARABE	34
			BORNO	BAMA	BUDUWA/BULA CHIRABE	27
		PULKA/BOKKO	BORNO	GWOZA	JOHODE/CHIKIDE/KUGHUM	47
			BORNO	KONDUGA	AUNO/CHABBOL	73
	MONGUNO	MONGUNO	BORNO	KONDUGA	AUNO/CHABBOL	37
			NIGER	DIFFA	CHETIMARI	31
	NGALA	NGALA	BORNO	BAMA	GULUMBA/JUKKURI/BATRA	43

NEW ARRIVAL MALNUTRITION SCREENING SUMMARY (CHILDREN 6 — 59 MONTHS)

Between 19 and 25 September 2022, an exhaustive nutrition screening using Mid-Upper Arm Circumference (MUAC) and oedema for acute malnutrition was conducted by sector partners for 289 children of 6-59 months. Of the 289 children screened, the MUAC reading indicated that 52 children were recorded in the red category, 53 children in the yellow category and 184 children in the green category. No case of oedema was reported in the six LGAs assessed.

Among the 289 children screened, 19 children arrived from neighbouring countries (9 in Gwoza LGA, 1 in Kala Balge and 9 in Mobbar LGA); of all the 19 children measured; 1 were in red, 13 in green and 5 were in yellow. All children found with acute malnutrition have been admitted in the treatment programme.

Please note, the data presented above are not surveillance results and should be interpreted with caution.

Breakdown of MUAC reading by category

LGA	Breakdown of MUAC reading by category						Total
	Green (≥12.5cm)		Yellow (11.5cm - 12.5cm)		Red (<11.5cm)		
	Inaccessible	Accessible	Inaccessible	Accessible	Inaccessible	Accessible	
Bama	69	10	23	2	31	0	135
Dikwa	55	0	12	0	8	0	75
Gwoza	7	27	5	7	4	2	52
Kala Balge	0	0	0	0	0	1	1
Mobbar	6	7	0	2	0	0	15
Monguno	3	0	2	0	6	0	11
Total	140	44	42	11	49	3	289

■ Nourished
 ■ Moderate Acute Malnutrition (MAM)
 ■ Severe Acute Malnutrition (SAM)

When quoting, paraphrasing, or in any way using the information mentioned in this report, the source needs to be stated appropriately as follows: "Source: Displacement Tracking Matrix (DTM) of the International Organization for Migration, Nigeria Mission, September 2022".

For more information or to report an alert, please contact: DTM Nigeria: iomnigeriadtm@iom.int

<https://displacement.iom.int/nigeria> ; <https://dtm.iom.int/nigeria>

