



137 517
registered returnees

53%
are female

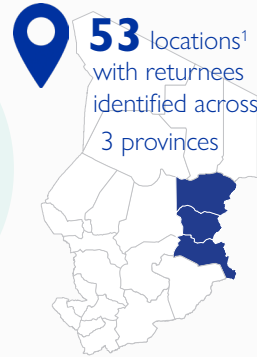
66%
are children

2 606
are pregnant

7 674
are breastfeeding

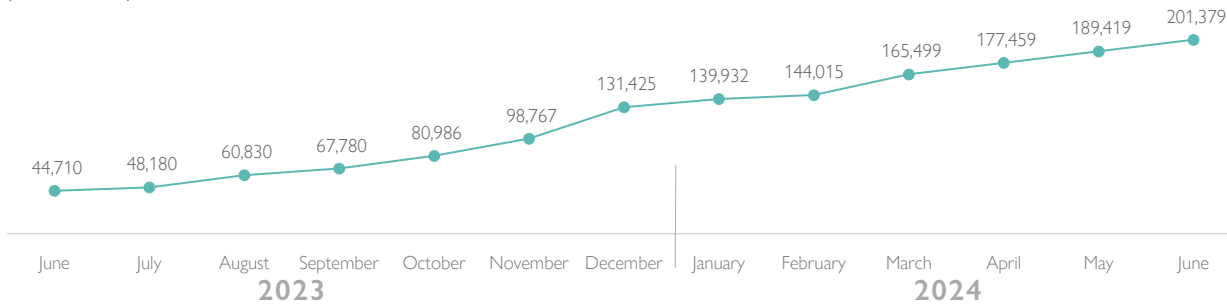
201 379
returnees in Chad
(estimation)

240 000
returnees projected to reach
Chad by december 2024
(estimation)

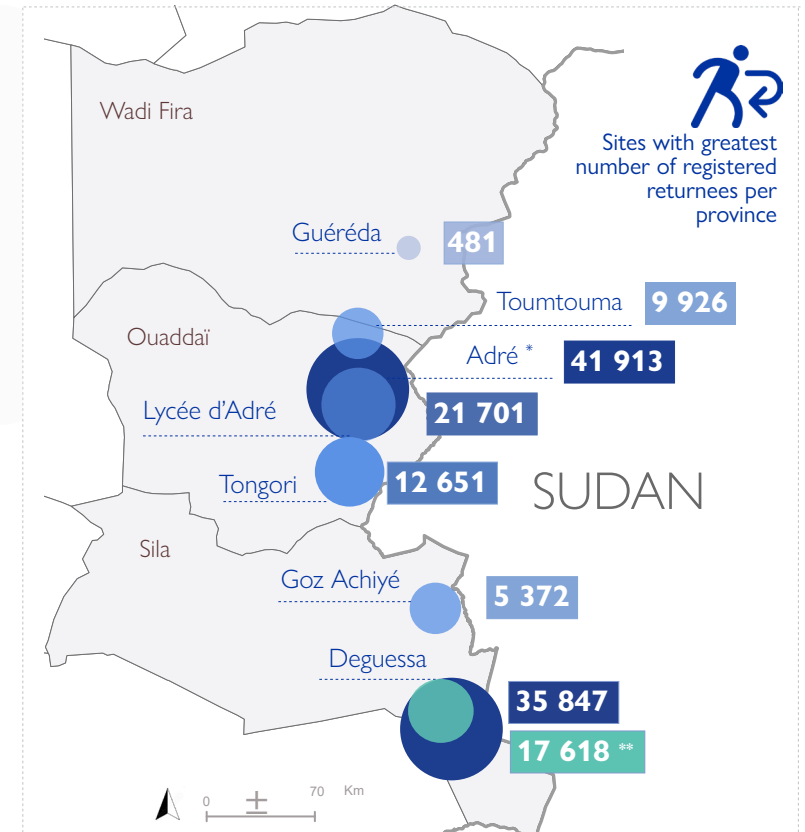


1 - IOM has registered returnees in 85% (45) of these locations

ESTIMATED NUMBER OF RETURNEES (individuals)²



2 - IOM projections and estimates on returnees are evaluated every six months.



* inclusive of Lycée d'Adré. Otherwise, sums up to 20 296 across the 10 locations around Adré

** iBiometric registration completed as of end July 2024

HIGHLIGHTS

An estimated 910,000 people have crossed into Chad since the onset of the crisis in Sudan, of which 201,379 are Chadian returnees as of end June 2024. IOM expects this number to rise to 240,000 through to December 2024. This is due to ongoing conflict and food insecurity in Darfur, owing to the current suspension of the humanitarian corridor between Chad and Darfur.

BACKGROUND

Returnees are Chadian nationals who were living in Sudan and have been displaced back to their home country where they lack the resources to rebuild their lives. Returnees are living either in displacement sites or within host communities. They are in urgent need of food, water, sanitation and hygiene, shelter, household items, health, and protection. IOM is the lead agency for the returnee response, in close coordination with the Government of Chad, local authorities, UN agencies, and local and international NGOs.

PRIORITY NEEDS



Humanitarian assistance
(WASH, Shelter, NFI,
Protection)

USD 35 345 000



Resilience and
livelihoods

USD 10 000 000



Displacement
Tracking data

USD 1 500 000

SINCE THE BEGINNING OF THE CRISIS THE IOM SUPPORTED:

disclaimer: assistance is distributed on a household level, where number of individuals reached may be subject to change and refined once a distribution has been completed.



EMERGENCY ASSISTANCE PROVIDED TO DATE

IOM is leading life-saving assistance for Chadian returnsees from Sudan via multisectoral interventions.

IOM HAS SUPPORTED:

- 134,358 returnsees with multisectoral assistance in 30 sites across Ouaddaï and Sila provinces since the beginning of the crisis.
- 3,788 transitional shelters benefitting over 20,000 of the most vulnerable returnsees and is constructing an additional 1,200 shelters in the returnee sites of Deguesssa in Sila and Tongori in Ouaddaï.
- The construction of 500 brick homes in a continuous effort to strengthen protection and social cohesion efforts as well as supporting resilience by assisting returnsees in replacing their transitional shelters.
- 94,861 returnsees by creating 10 new boreholes (thermic, solar-powered, and manual), 639 latrines, and distributing 8,489 essential WASH kits.
- 7,879 households (41,624 individuals) to carry out their most essential needs through multipurpose cash assistance.
- 15,009 household (79,095 individuals) to carry out essential household tasks through non-food items distributions.
- In collaboration with WFP, 105,850 returnsees with food distribution across the provinces of Ouaddaï and Sila.

REPORTING PERIOD UPDATES

HUMANITARIAN ASSISTANCE AND COORDINATION

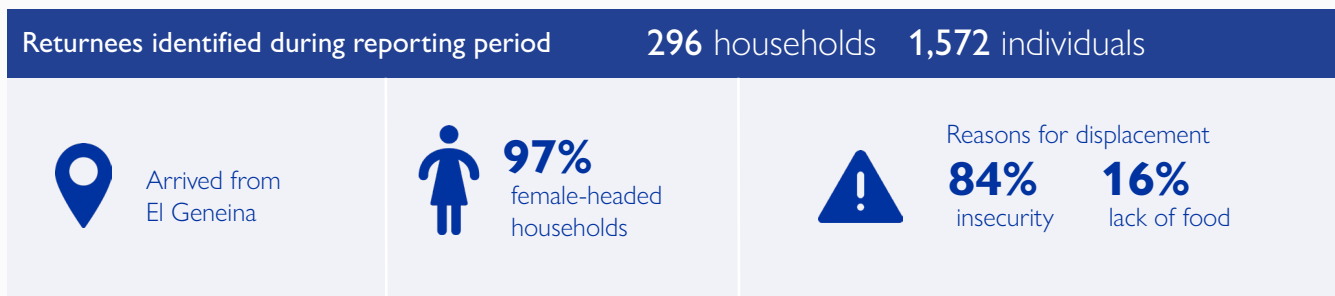
As the lead agency for the humanitarian response for returnsees, IOM continues to coordinate with national, international, and government partners (CNARR, local authorities) to deliver vital services to vulnerable returnsees in the east of Chad. IOM continues to support and coordinate the delivery of WASH, food, protection, health, shelter, NFI, and education assistance in returnee sites by national and international partners including UNICEF, UNFPA, WFP, Concern Worldwide, INTERSOS, COOPI, ACTED, Help Tchad, and the Chadian Red Cross.

- As the rainy season has started in earnest, IOM has distributed tarpaulins to 5,700 households in Ouaddaï and is currently distributing more in Sila to enable returnsees to protect their shelters.
- IOM supported WFP, local authorities, and the government of Chad in a scoping mission to identify key community infrastructure projects to be improved around Tongori returnee site, as part of a new resilience intervention in the east of Chad supported by the World Bank. These projects include rehabilitating or construction health centres, schools, water points, roads, and supporting reforestation in host communities affected by the influx of displaced persons from Sudan.

DISPLACEMENT DATA & KNOWLEDGE SHARING

IOM's Displacement Tracking Matrix (DTM) is a leading tool to monitor and analyse displacement flows. IOM DTM teams, including CNARR agents, locally recruited and trained enumerators, are deployed across Sila and Ouaddaï provinces on an ongoing basis to identify and register vulnerable returnee households, including newly arrived households as well as households in remote locations not previously identified. IOM's data on displacement and needs feeds knowledge sharing within the humanitarian community to coordinate and target lifesaving assistance to those in need. Biometric registration has been recently completed in Deguesssa (Sila), in order to update and better identify the returnsees currently living in the area.

- IOM continues to identify returnee households at the border crossing of Adré. Over the past two weeks, IOM has identified 296 households (1,572 individuals), 97% of which were headed by a woman. The households were primarily coming from Al Geneina (84%) and fled Sudan due to insecurity – either conflict or preventive movement (84%) and lack of food (16%).
- IOM registered 270 households (1,786 individuals) via its registration centre at Lycée d'Adré site, including households identified at the border and households referred to IOM by UNHCR.




TOTAL REGISTERED RETURNEES AS OF 6 AUGUST 2024 I

Total number of households: 25 522

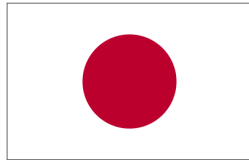
Total number of individuals: 137 517

PROVINCE	DÉPARTEMENT	SOUS-PRÉFECTURE	VILLAGE/ LOCATION	# HOUSEHOLDS	# INDIVIDUALS	PROVINCE	DÉPARTEMENT	SOUS-PRÉFECTURE	VILLAGE/ LOCATION	# HOUSEHOLDS	# INDIVIDUALS
Ouaddai	Assoungaha	Adré	Lycee d'Adré	2,444	21,701	Sila	Kimiti	Mogororo	Deguessa Site**	6,867	35,847
Ouaddai	Assoungaha	Adré	Tongori	2,016	12,651	Sila	Kimiti	Mogororo	Goz Achiye	1,038	5,372
Ouaddai	Assoungaha	Molou	Toumtouma	2,327	9,926	Sila	Kimiti	Moudeïna	Awinrado	1,025	3,154
Ouaddai	Assoungaha	Adré	Nil	652	4,484	Sila	Tissi	Tissi	Kalma	613	2,424
Ouaddai	Assoungaha	Adré	Guilané	552	3,735	Sila	Kimiti	Adé	Adé Mour	431	2,282
Ouaddai	Assoungaha	Adré	Hayal Chati	362	2,947	Sila	Kimiti	Mogororo	Goz Saffrah	506	2,093
Ouaddai	Assoungaha	Adré	Teleha	397	2,784	Sila	Kimiti	Mogororo	Hile Hissen	378	1,828
Ouaddai	Assoungaha	Molou	Ben Wadienne	519	2,545	Sila	Kimiti	Moudeïna	Koloye	289	1,319
Ouaddai	Assoungaha	Molou	Kawa	450	2,135	Sila	Kimiti	Mogororo	Andressa	209	1,090
Ouaddai	Assoungaha	Adré	Amkharouba 3	256	1,831	Sila	Tissi	Tissi	Saraf bourgou	275	901
Ouaddai	Assoungaha	Molou	Tchoukia	383	1,670	Sila	Kimiti	Mogororo	Mogororo 2	174	785
Ouaddai	Assoungaha	Molou	Borota	376	1,583	Sila	Kimiti	Moudeïna	Habila	107	557
Ouaddai	Assoungaha	Adré	Adré Nord	191	1,423	Sila	Kimiti	Mogororo	Telassa	100	540
Ouaddai	Assoungaha	Adré	Amkharouba 1	188	1,307	Sila	Kimiti	Moudeïna	Moudeïna	76	277
Ouaddai	Assoungaha	Mabrone	multiple sites *	410	2,171	Sila	Kimiti	Mogororo	Dogdoré	20	156
Ouaddai	Assoungaha	Molou	Goundoguin	229	1,015	Sila	Kimiti	Moudeïna	Toundoussa	39	152
Ouaddai	Assoungaha	Molou	Amanta	209	985	Total Sila				12 144	58 777
Ouaddai	Assoungaha	Molou	Midjiguilta	261	903	PROVINCE	DÉPARTEMENT	SOUS-PRÉFECTURE	VILLAGE/ LOCATION	# HOUSEHOLDS	# INDIVIDUALS
Ouaddai	Assoungaha	Adré	Amkharouba 2	135	878	Wadi Fira	Dar Tama	Guéréda	Boukoulom	67	481
Ouaddai	Assoungaha	Molou	Djazzmé	209	647	Total Wadi Fira				67	481
Ouaddai	Assoungaha	Adré	Hachaba	86	559	*For the purpose of this reporting product, Mabrone groups 3 sites, including Mabrone (1073 returnees), Gundo (563) and Djamal Annour (535).					
Ouaddai	Assoungaha	Adré	Zouhour	41	348	**The Site of Deguessa underwent a biometric registration where it captured 17 618 individuals.					
Ouaddai	Assoungaha	Adré	Koufron	26	78						
Ouaddai	Assoungaha	Molou	Ngaldang	6	27						
Ouaddai	Assoungaha	Molou	Laban Dafak	6	19						
Ouaddai	Assoungaha	Tourane	Gaga	1	4						
Total Ouaddai				13 311	78 259						



 Schweizerische Eidgenossenschaft
Confédération suisse
Confederazione Svizzera
Confederaziun svizra

Swiss Agency for Development
and Cooperation SDC



For more information, please contact

**Jonathan Baker, Emergency Coordinator
(Sudan Response)**

Email: jobaker@iom.int

