



Flow Monitoring - Spontaneous Returns of Undocumented Afghans from Pakistan

11th - 17th November 2018



Overall returnees through **Torkham and Chaman** since January 2018 **27,729**

For this reporting period **95** interviews were conducted comprising of the following categories

93.6% *Undocumented families

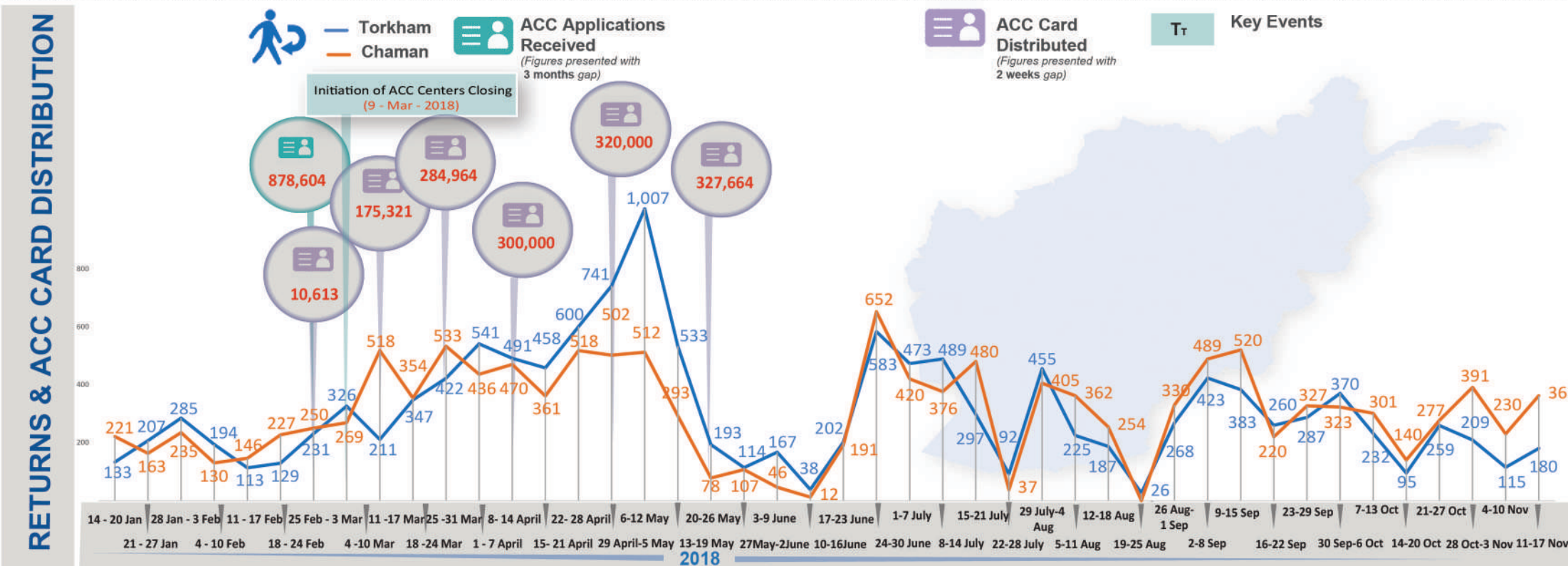
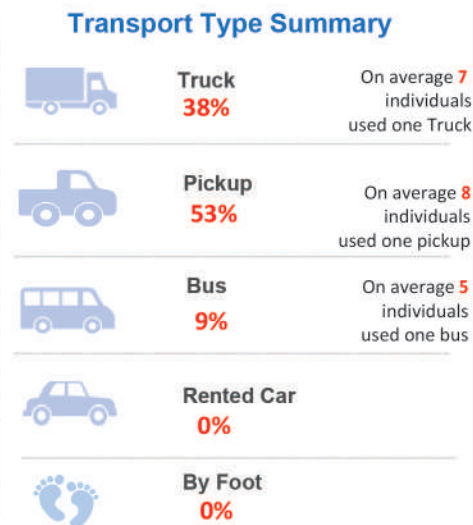
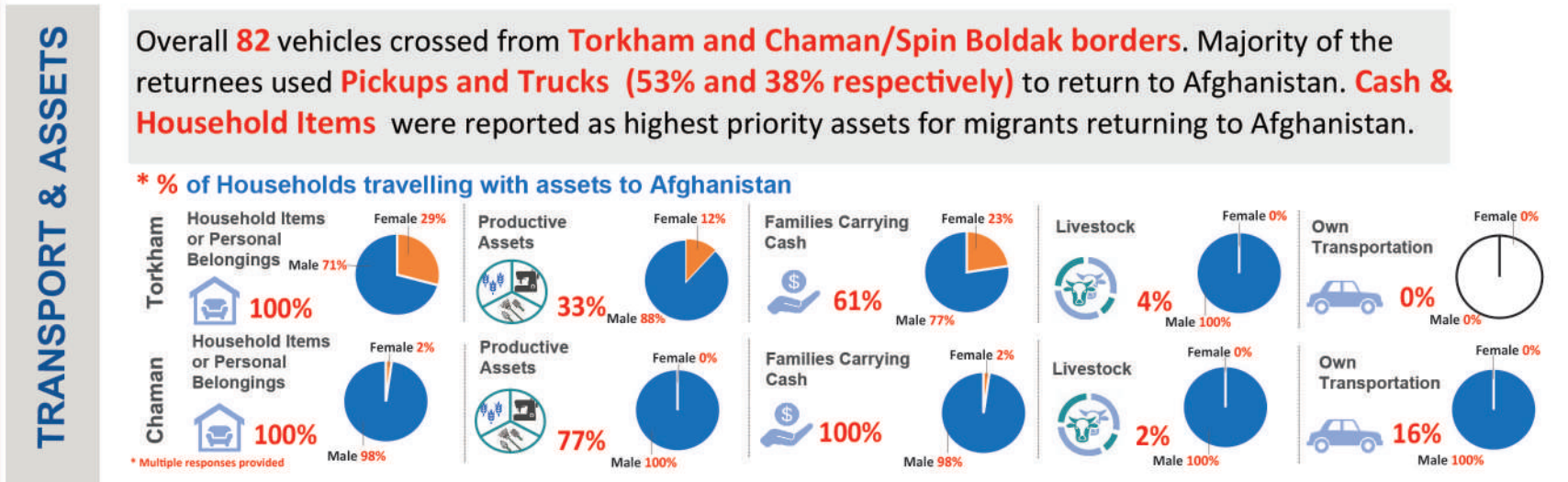
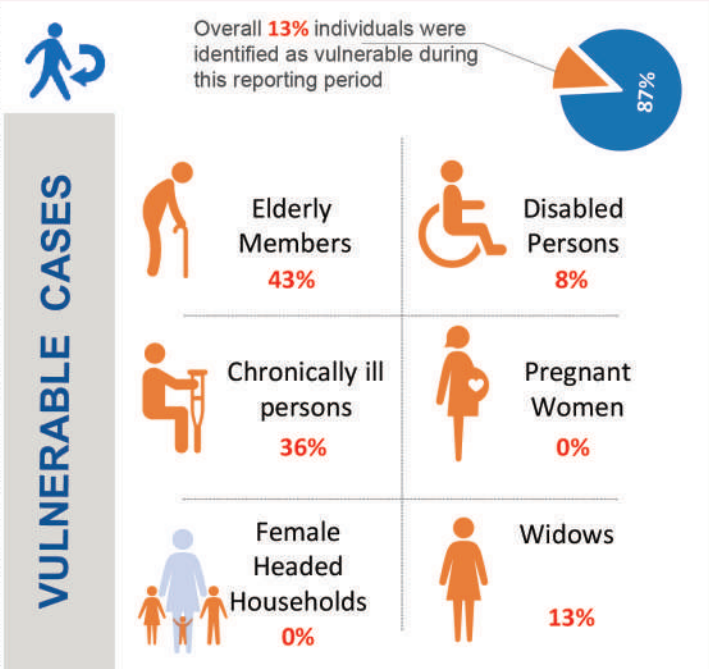
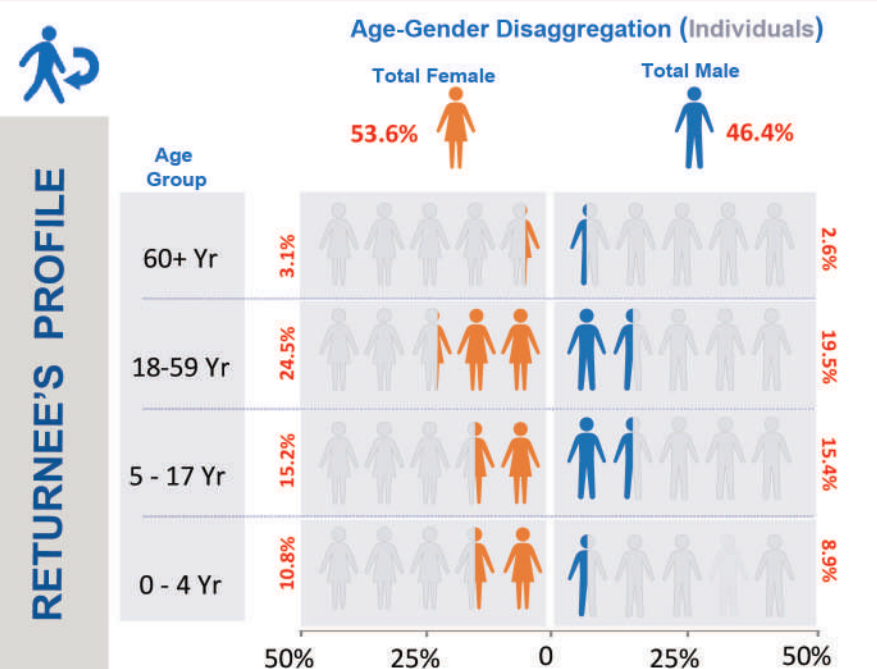
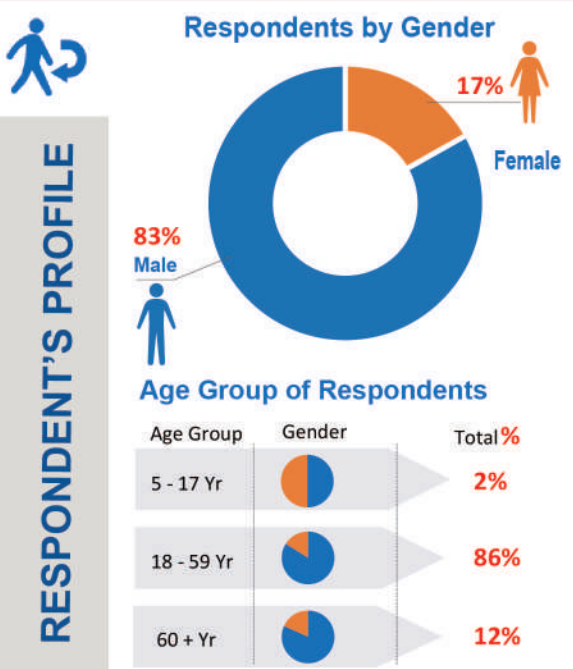
5.3% *Undocumented individuals travelling with documented families

1.1% *Undocumented individuals travelling alone

* interviews were conducted at both transit points, Torkham and Chaman/Spin Boldak



542 Undocumented Afghan individuals returned to Afghanistan through the **Torkham and Chaman/Spin Boldak** border. **180** individuals used the **Torkham** border crossing while **362** individuals crossed through **Chaman/Spin Boldak** border crossing.





PUSH AND PULL FACTORS RECORDED BASED ON RETURNEES RESPONSE

Push factors: Factors which discourage undocumented Afghan nationals from staying in host country.

PUSH FACTORS

- Economic Factors
- Afraid of Being Deported
- Camp Closure
- Returning Home
- Undocumented

PULL FACTORS

- Improvement in Security Situation
- Availability of Assistance in Afghanistan
- Reunion with Family and relatives
- Own Country

Pull factors: Factors which encourage undocumented Afghan nationals to return to their country of origin.

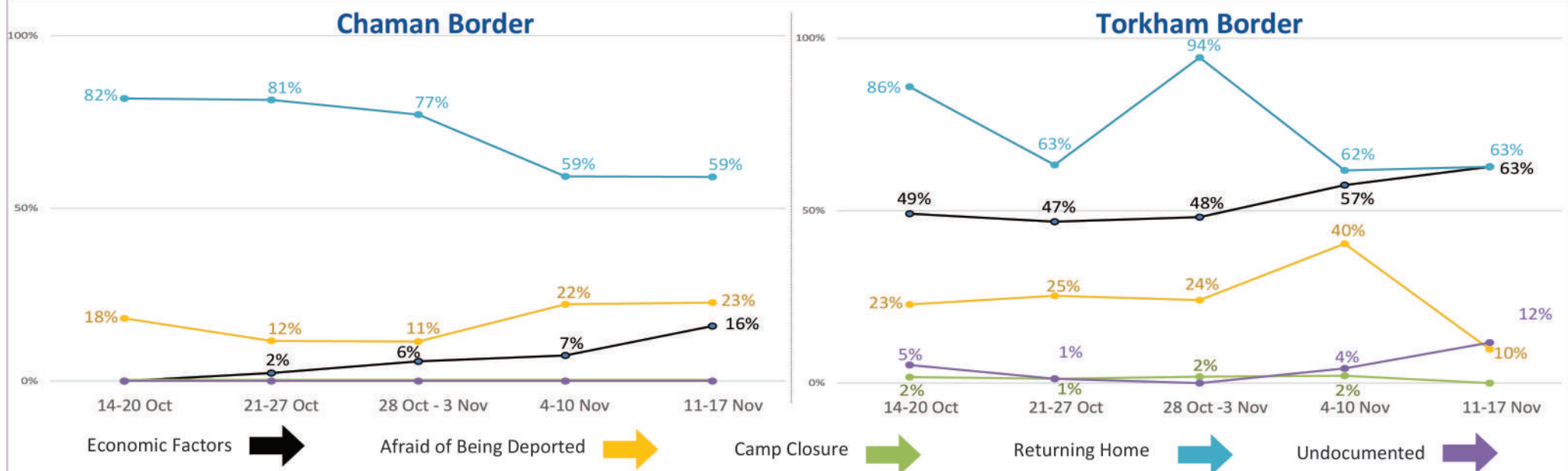
In Torkham, 'Returning Home' increased slightly, and **63%** of the respondents cited this as a push factor (increase of 1 percentage point compared to last week). 'Economic Factors' is trending upwards and is at **63%** (increase of 6 percentage points compared to last week). 'Afraid of Being Deported' is trending downwards and **10%** of the respondents cited this as a push factor (decrease of 30 percentage points compared to last week). 'Lack of Documentation' is trending upwards and is at **12%** (increase of 8 percentage points). Whereas 'Camp Closure' decreased slightly and is at **2%** (decrease of 2 percentage points).

In Chaman, 'Returning Home' remained the same and is at **59%**. 'Afraid of Being Deported' increased slightly and is at **23%** (increase of 1 percentage point compared to last week). 'Economic Factors' is trending upwards and is at **16%** (increase of 9 percentage points compared to last week). Whereas **none** of the respondents at Chaman reported 'Lack of Documentation' or 'Camp Closure' as a push factor.

The indicator rated as the main pull factor for both border crossing points was 'Own Country'. This was reported by **94%** of the respondents at Torkham and **68%** of the respondents at Chaman. The second highest concern was 'Reunion with Family / Relatives' which was reported by **80%** of the respondents at Torkham and **30%** of the respondents at Chaman.

Similarly in Torkham and Chaman, **2%** of the respondents reported 'Availability of Assistance in Afghanistan' and **none** of the respondents reported 'Improvement in Security Situation' as a pull factor at both border crossing points.

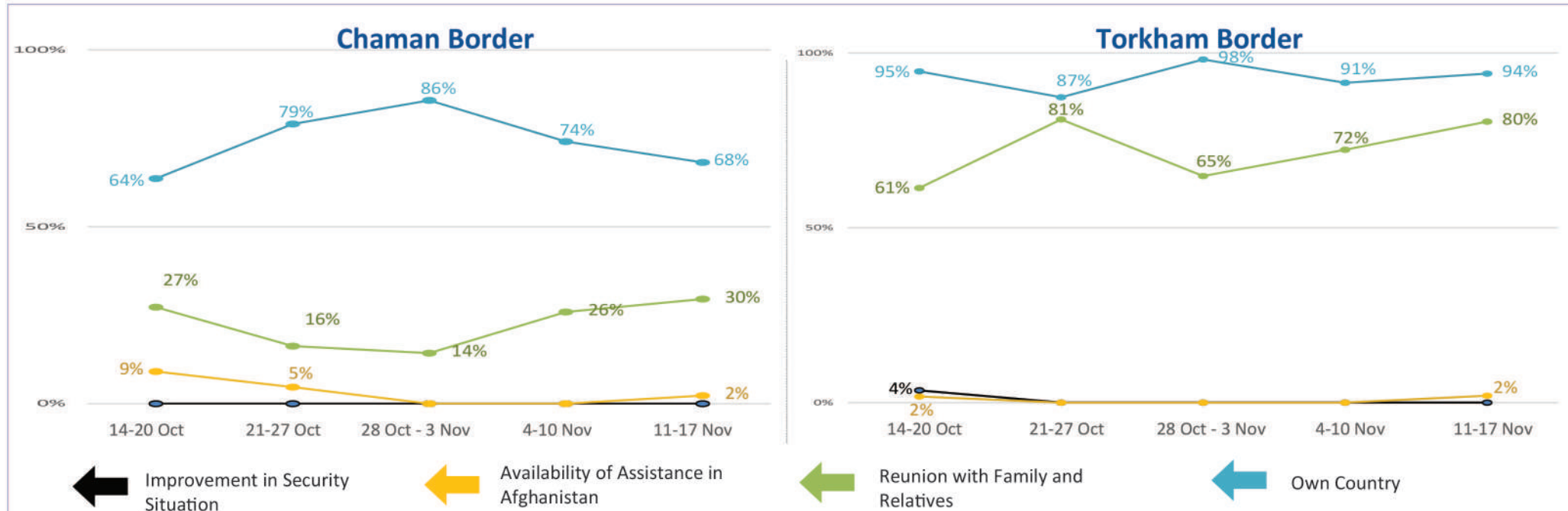
PUSH Factors (Weekly Trend)



Top three ranked provinces of origin preferred by returnees based on the PUSH Factors' responses are.



PULL Factors (Weekly Trend)



Top three ranked destinations in Afghanistan, preferred by returnees based on the PULL Factors' responses are.





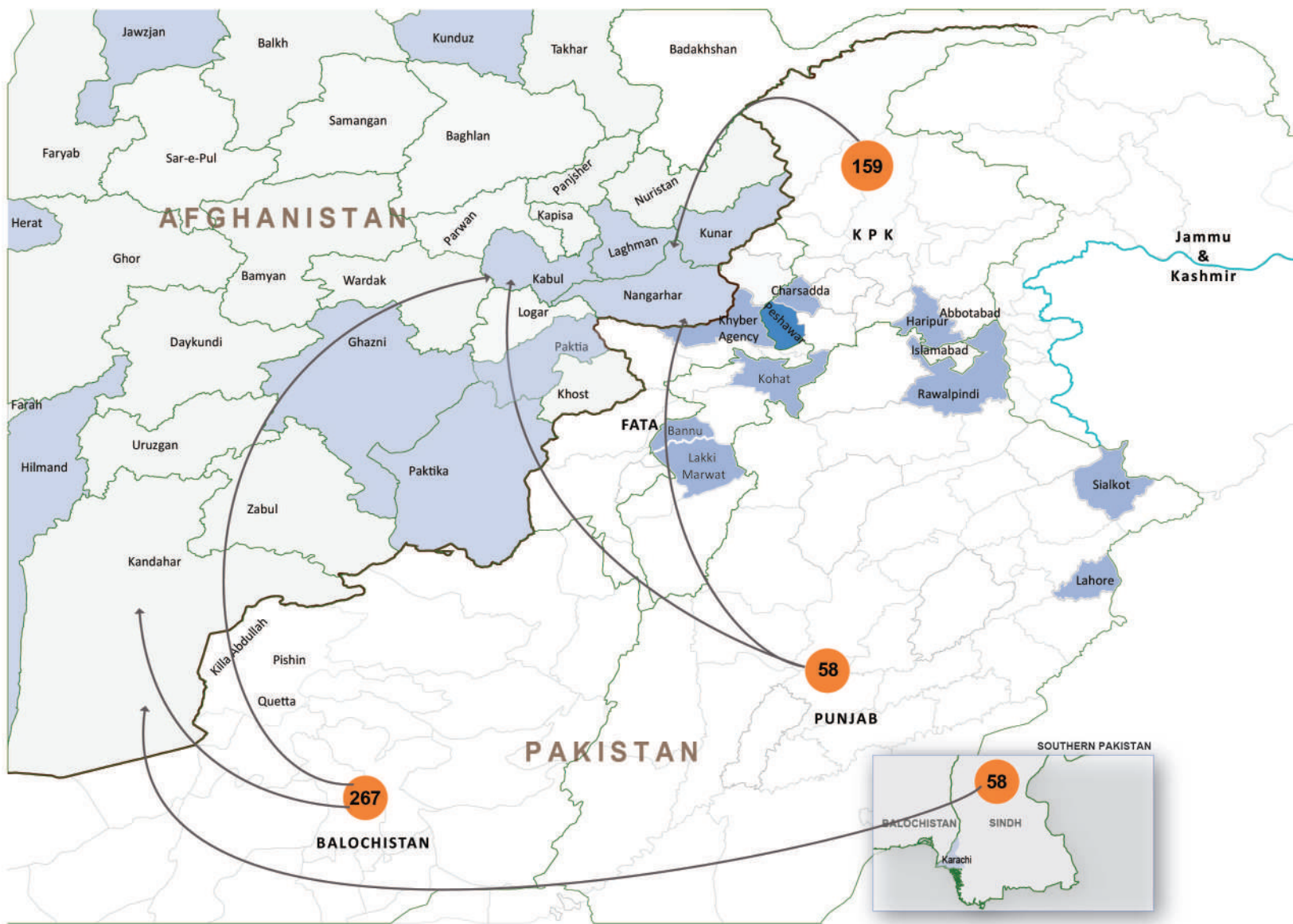
Flow Monitoring - Spontaneous Returns of Undocumented Afghans from Pakistan

11th - 17th September 2018



HIGH RETURN AREAS

Population Movement Trend for Spontaneous Returns of Undocumented Afghans from Pakistan



The **top 5 destination** provinces for returns are

- **Kandahar (35%)**
- **Nangarhar (17%)**
- **Kabul (12%)**
- **Kunar (10%)**
- **Hilmand (9%)**



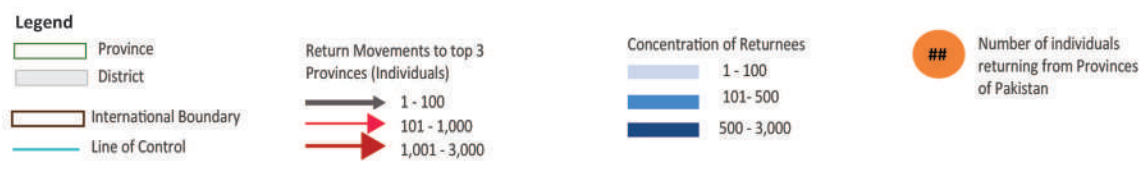
The largest **proportion of returns** are from:

- **Balochistan (49%)**
- **Khyber Pakhtunkhwa (29%)**
- **Punjab (11%)**
- **Sindh (11%)**

Data Source: Population Census Organization, UNOCHA

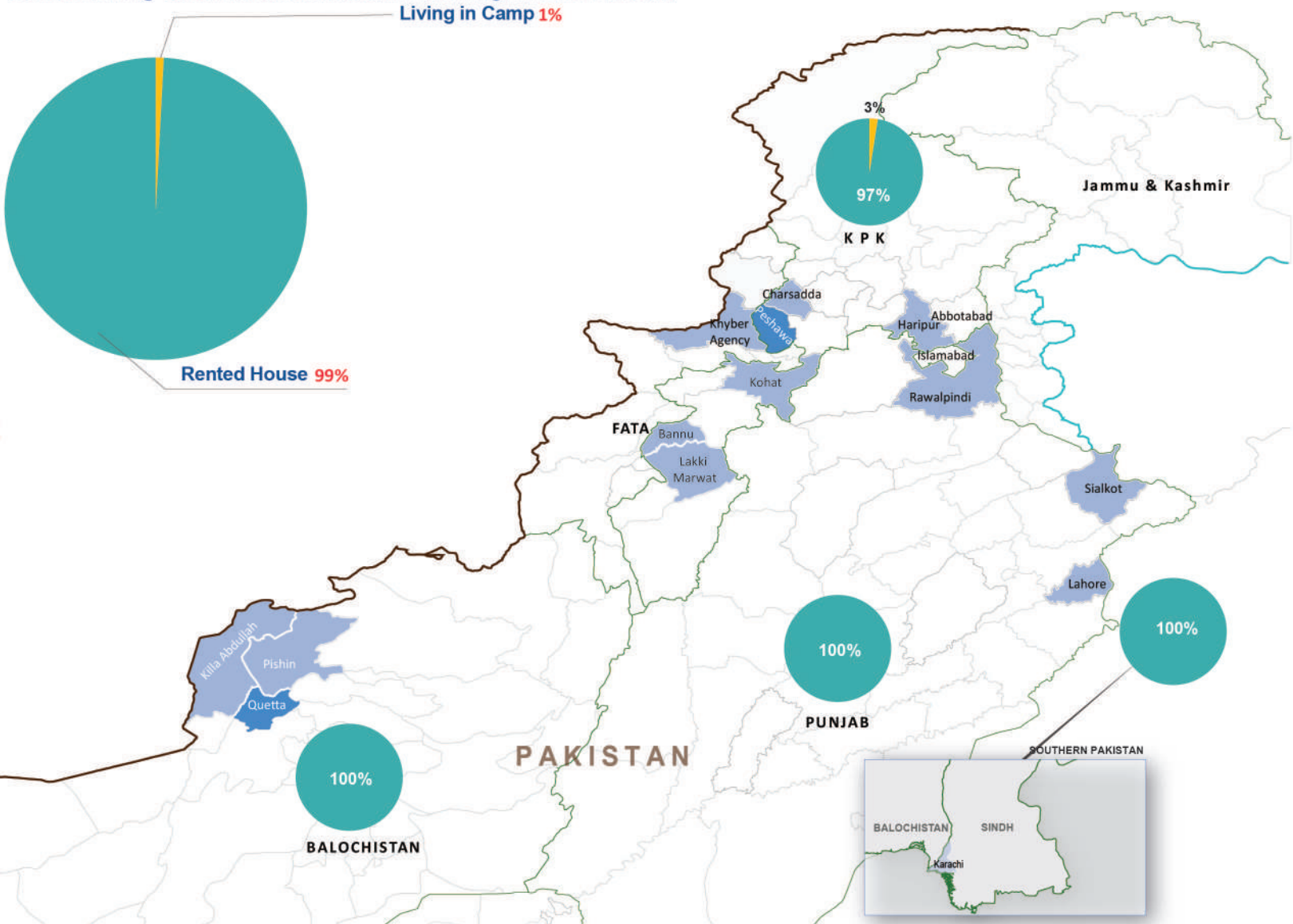
Disclaimers: The designations employed and the presentation of material on this map do not imply the expression of any opinion whatsoever on the part of the Secretariat of the United Nations concerning the legal status of any country, territory, city or area or of its authorities, or concerning the delimitation of its frontiers or boundaries. The dotted line represents approximately the line of control between India and Pakistan. The final status of Jammu and Kashmir has not yet been agreed upon by the parties.

Please note: The boundaries and names shown and the designations used on this map do not imply official acceptance or endorsement by IOM.



LIVING CONDITIONS IN PAKISTAN

Current Living Conditions of Undocumented Afghans in Pakistan



Overall 99% of Undocumented Afghan returnees from this week lived in **rented houses**, whereas the remaining **1%** comprise of families that lived in 'camps'.

It was observed that in **Balochistan, Punjab and Sindh all (100%)**, Undocumented Afghan returnees lived in **rented houses** followed by **97%** in **KP**.

In **KP**, **3%** of the undocumented Afghan returnees reported living in camps compared to **none** in **Balochistan, Punjab and Sindh**.

Data Source: Population Census Organization, UNOCHA

Disclaimers: The designations employed and the presentation of material on this map do not imply the expression of any opinion whatsoever on the part of the Secretariat of the United Nations concerning the legal status of any country, territory, city or area or of its authorities, or concerning the delimitation of its frontiers or boundaries. The dotted line represents approximately the line of control between India and Pakistan. The final status of Jammu and Kashmir has not yet been agreed upon by the parties.

Please note: The boundaries and names shown and the designations used on this map do not imply official acceptance or endorsement by IOM.



* The Response for "Own House" relates to the fact that land/house is bought in the name of Pakistani relatives.