



# Flow Monitoring - Spontaneous Returns of Undocumented Afghans from Pakistan

23rd - 29th September 2018



## Overall returnees through **Torkham and Chaman** since January 2018 **24,245**

For this reporting period **177** interviews were conducted comprising of the following categories

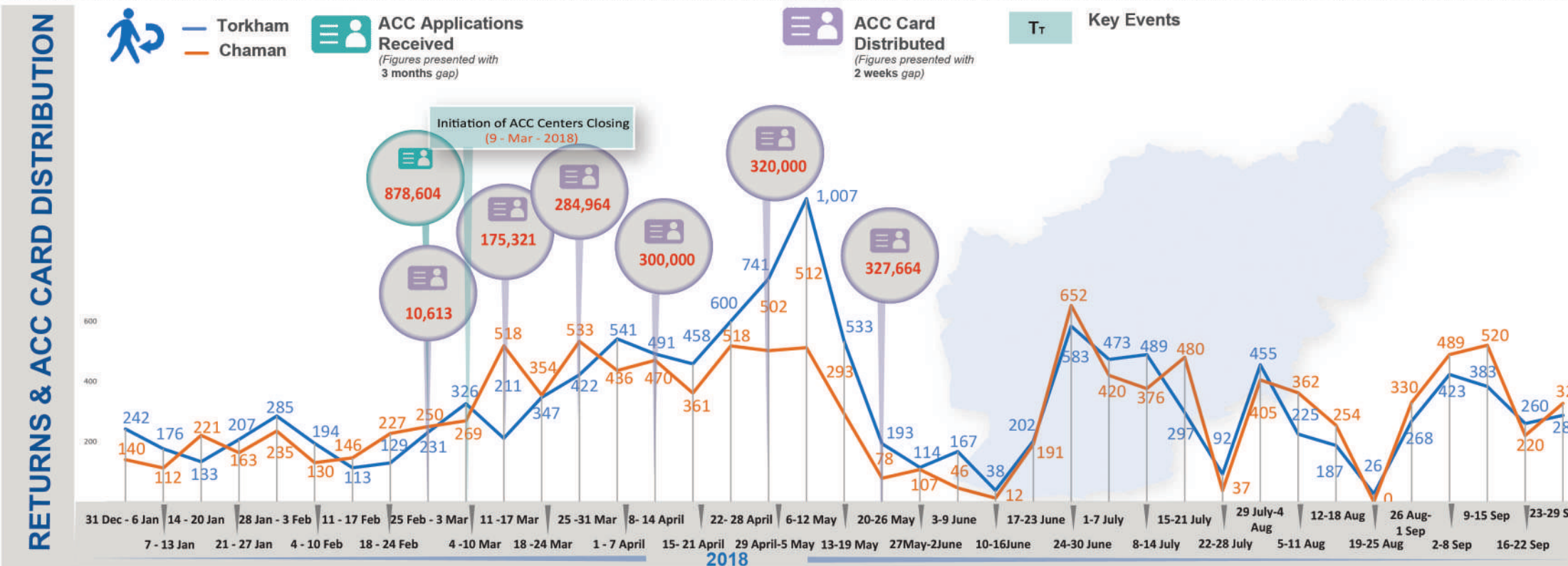
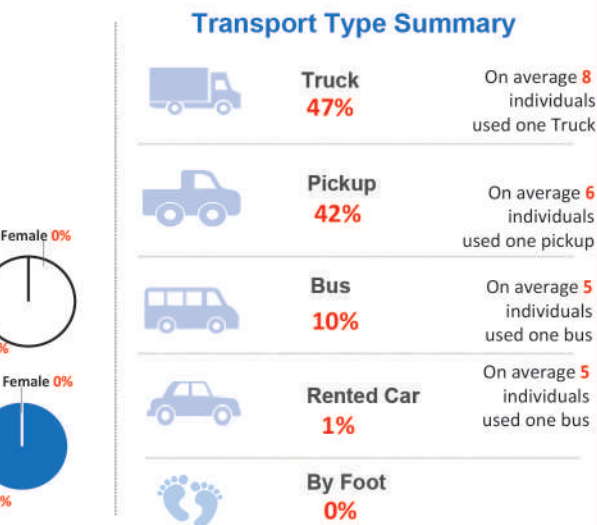
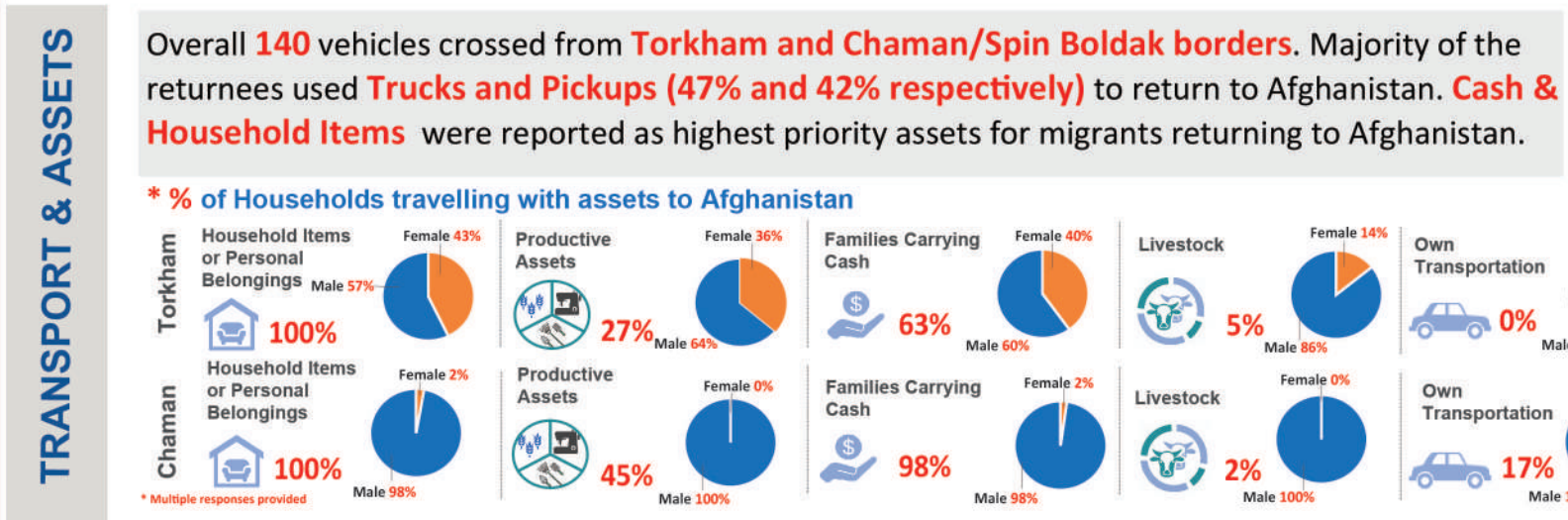
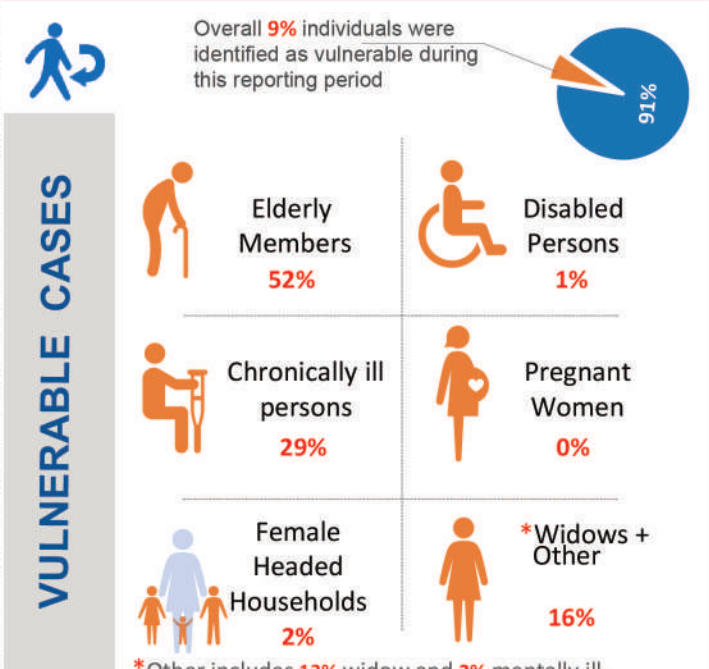
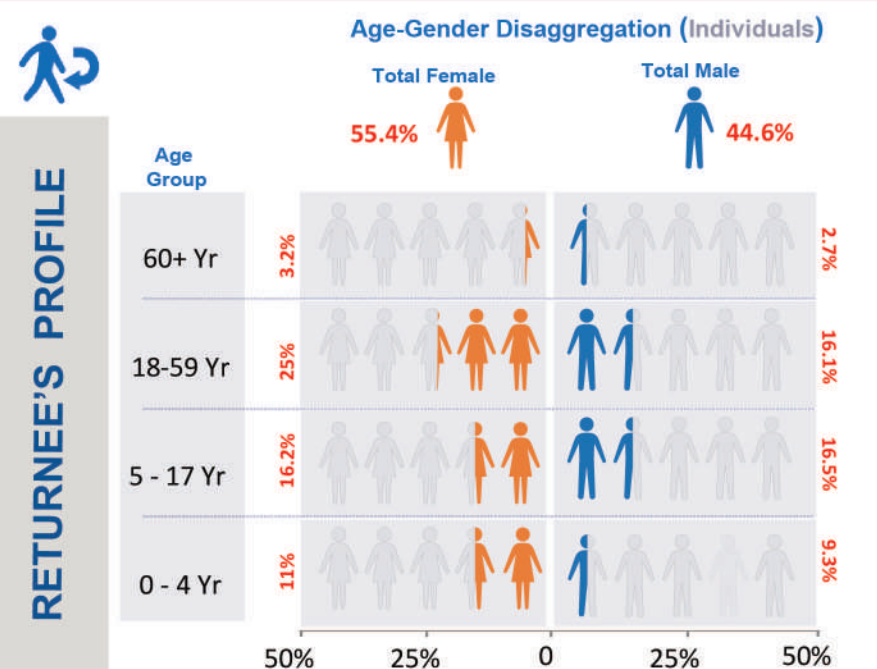
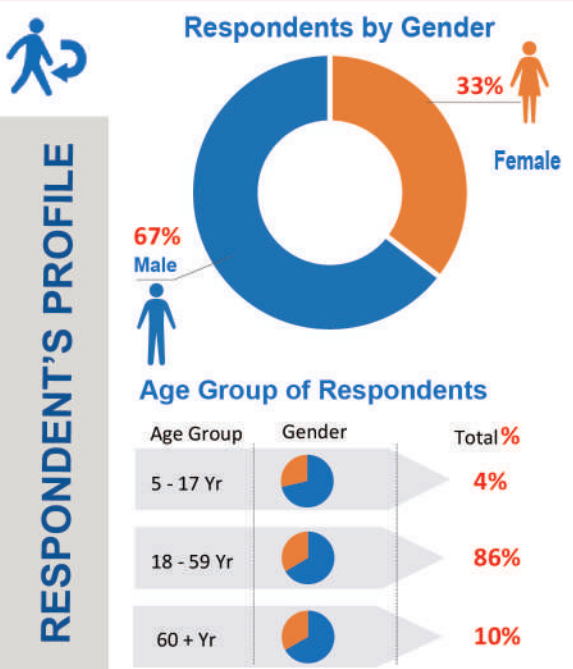
- 76.3%** \*Undocumented families
- 20.3%** \*Undocumented individuals travelling with documented families
- 3.4%** \*Undocumented individuals travelling alone

\* interviews were conducted at both transit points, Torkham and Chaman/Spin Boldak



**614 Undocumented Afghan** individuals returned to Afghanistan through the **Torkham and Chaman/Spin Boldak** border. **287** individuals used the **Torkham** border crossing while **327** individuals crossed through **Chaman/Spin Boldak** border crossing.

- ### WHO IS AN UNDOCUMENTED AFGHAN
- Individuals with No Documents
  - Individuals with No Passport or Lapsed Visa
  - Individuals with Tazkira
  - Individuals with Expired POR Card
  - Individuals with ACC Card
  - Individuals with ACC Token





PUSH AND PULL FACTORS RECORDED BASED ON RETURNEES RESPONSE

**Push factors:** Factors which discourage undocumented Afghan nationals from staying in host country.

## PUSH FACTORS

- Economic Factors
- Afraid of Being Deported
- Camp Closure
- Returning Home
- Undocumented

## PULL FACTORS

- Improvement in Security Situation
- Availability of Assistance in Afghanistan
- Reunion with Family and relatives
- Own Country

**Pull factors:** Factors which encourage undocumented Afghan nationals to return to their country of origin.

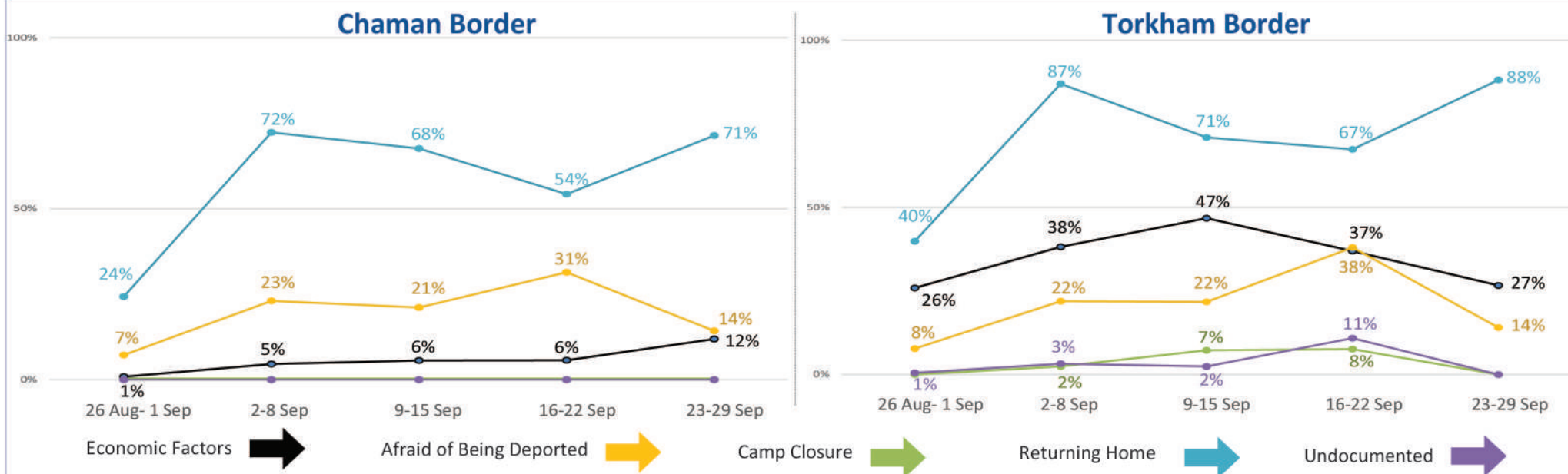
In **Torkham**, 'Returning Home' is trending upwards, and **88%** of the respondents cited this as a push factor (increase of 21 percentage points compared to last week). 'Economic Factors' is trending downwards and is at **27%** (decrease of 10 percentage points compared to last week). 'Afraid of Being Deported' is trending downwards and **14%** of the respondents cited this as a push factor (decrease of 24 percentage points compared to last week). Whereas **none** of the respondents at **Torkham** reported 'Lack of Documentation' or 'Camp Closure' as a push factor.

In **Chaman**, 'Returning Home' is trending upwards, and **71%** of the respondents cited this as a push factor (increase of 17 percentage points compared to last week). 'Afraid of Being Deported' is trending downwards and **14%** of the respondents cited this as a push factor (decrease of 17 percentage points compared to last week). 'Economic Factors' increased slightly and is at **12%** (increase of 6 percentage points). Whereas **none** of the respondents at **Chaman** reported 'Lack of Documentation', or 'Camp Closure' as a push factor.

The indicator rated as the main pull factor for both border crossing points was 'Own Country'. This was reported by **97%** of the respondents at **Torkham** and **76%** of the respondents at **Chaman**. The second highest concern was 'Reunion with Family / Relatives' which was reported by **89%** of the respondents at **Torkham** and **21%** of the respondents at **Chaman**.

Further in **Torkham**, **3%** of the respondents reported 'Availability of Assistance in Afghanistan' and **3%** of the respondents reported 'Improvement in Security Situation' as a pull factor. Similarly in **Chaman**, **2%** of the respondents reported 'Availability of Assistance in Afghanistan' and **none** of the respondents reported 'Improvement in Security Situation' as a pull factor.

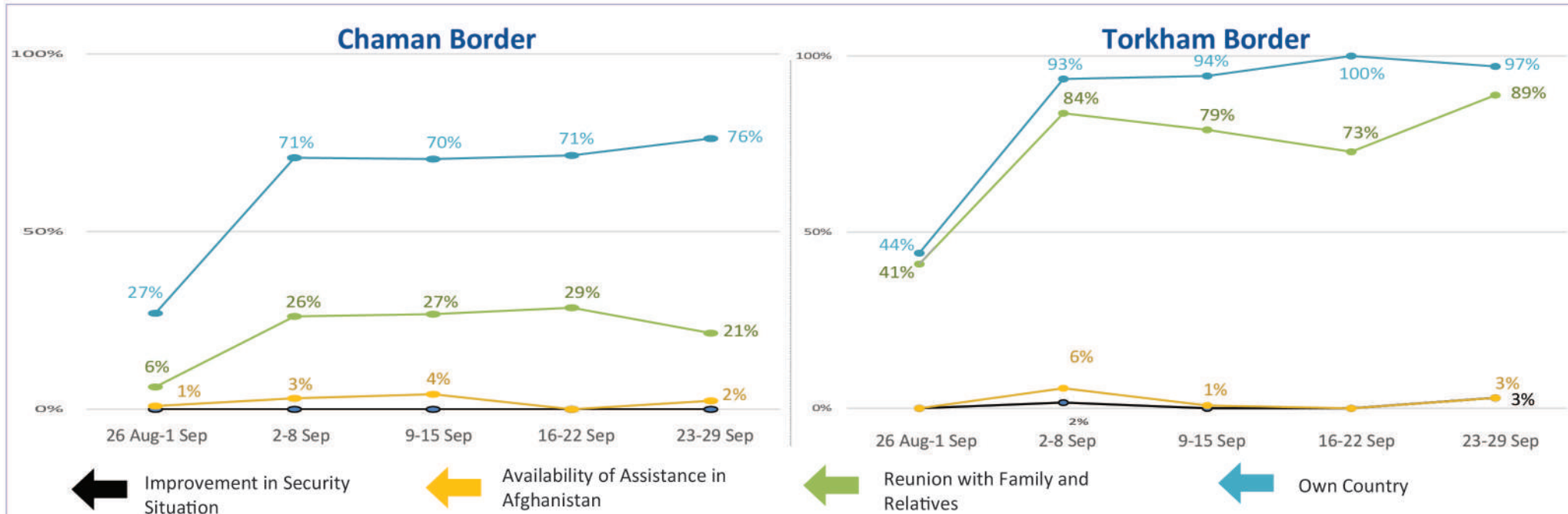
## PUSH Factors (Weekly Trend)



**Top three ranked provinces of origin preferred by returnees** based on the PUSH Factors' responses are.



## PULL Factors (Weekly Trend)



**Top three ranked destinations in Afghanistan, preferred by returnees** based on the PULL Factors' responses are.



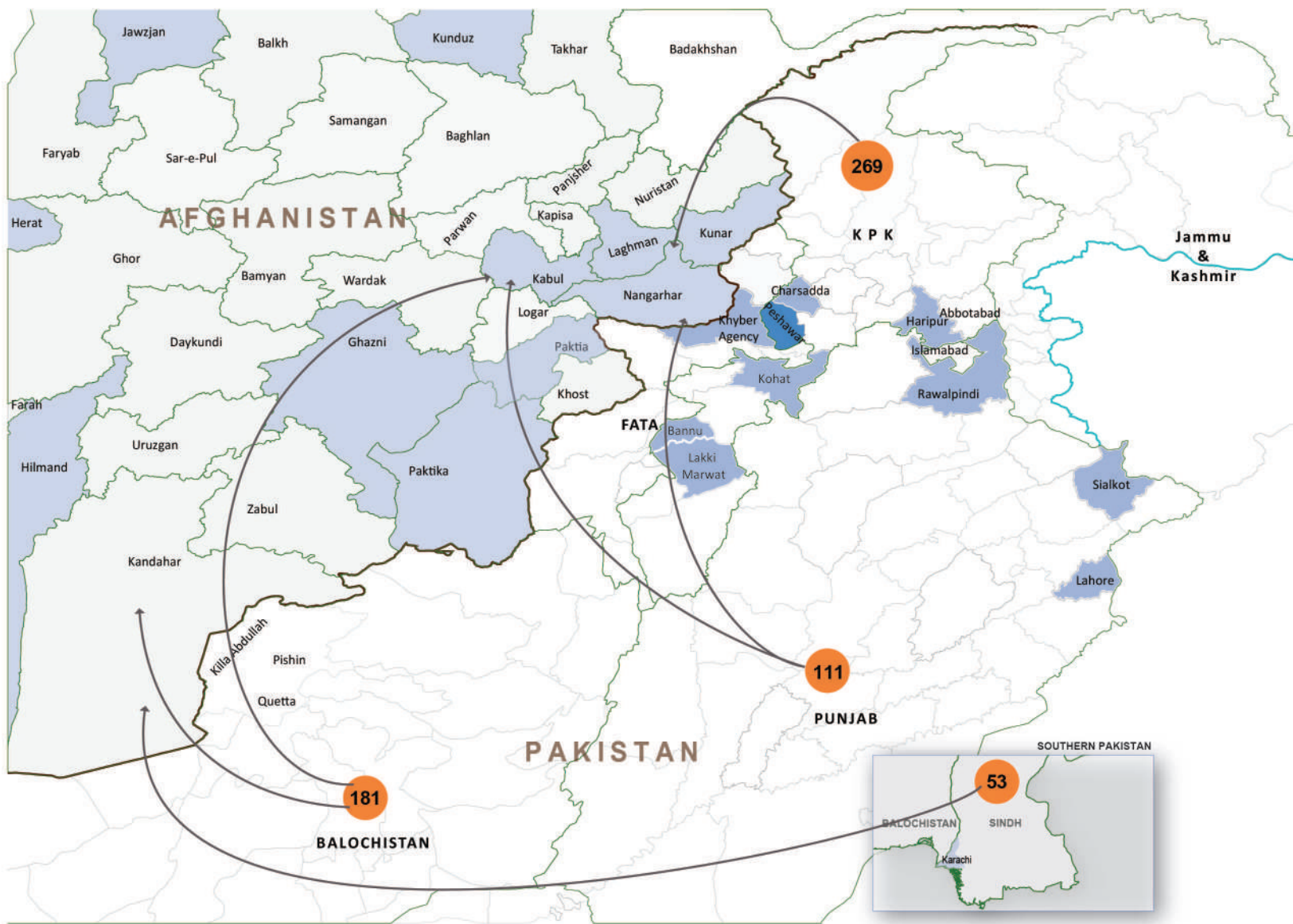


# Flow Monitoring - Spontaneous Returns of Undocumented Afghans from Pakistan

23rd - 29th September 2018

HIGH RETURN AREAS

## Population Movement Trend for Spontaneous Returns of Undocumented Afghans from Pakistan



The **top 5 destination** provinces for returns are

- Nangarhar (32%)
- Kandahar (27%)
- Kabul (13%)
- Kunar (7%)
- Baghlan (4%)



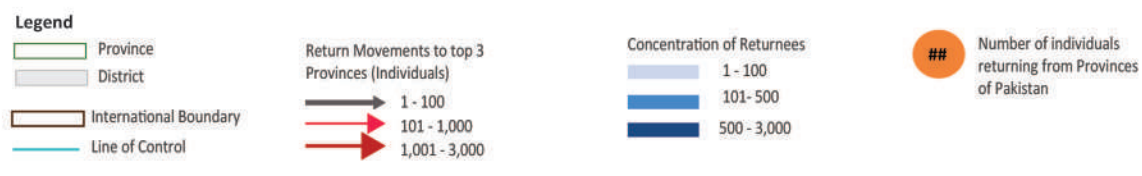
The largest **proportion of returns** are from:

- Khyber Pakhtunkhwa (44%)
- Balochistan (29%)
- Punjab (18%)
- Sindh (9%)

Data Source: Population Census Organization, UNOCHA

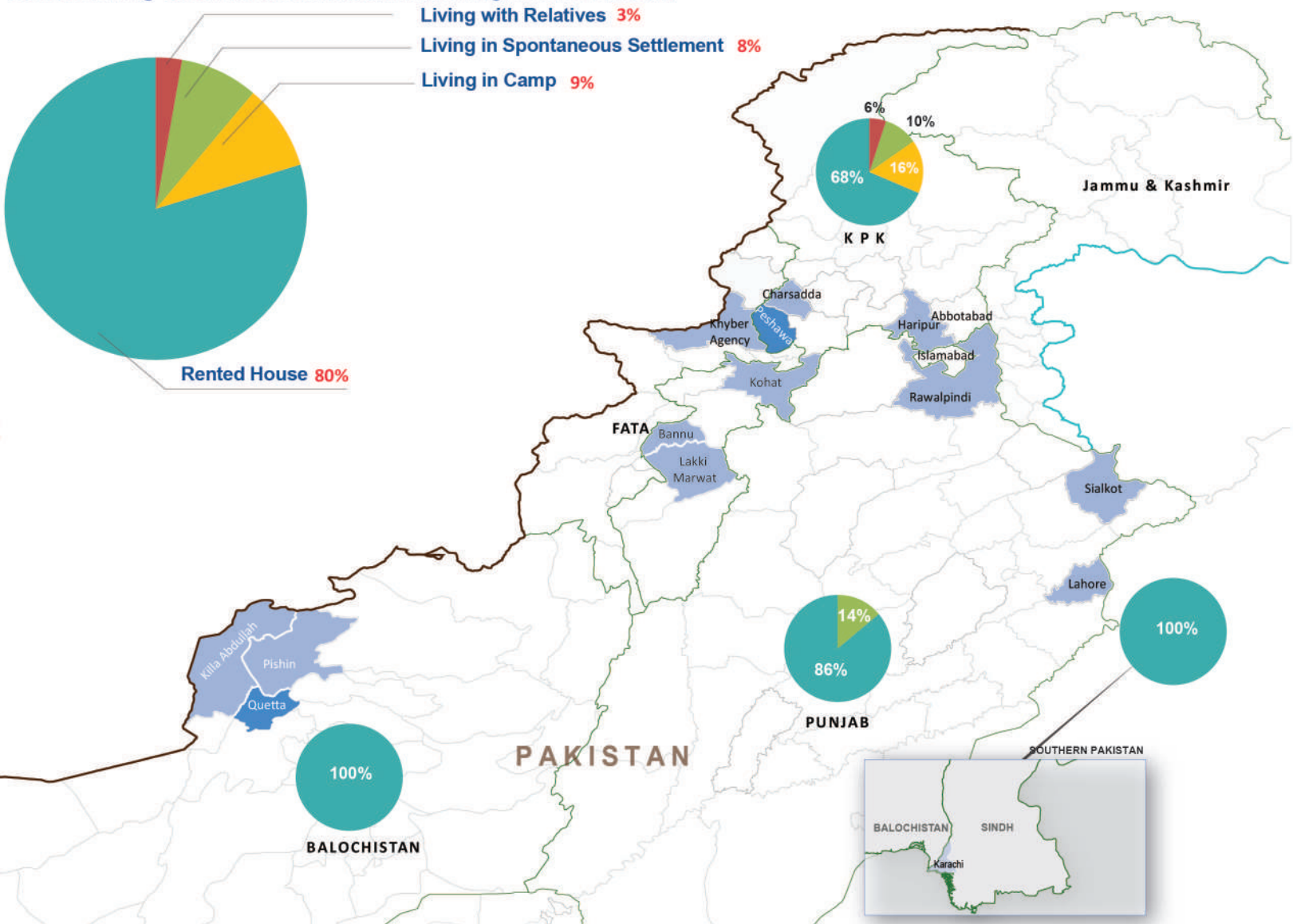
**Disclaimers:** The designations employed and the presentation of material on this map do not imply the expression of any opinion whatsoever on the part of the Secretariat of the United Nations concerning the legal status of any country, territory, city or area or of its authorities, or concerning the delimitation of its frontiers or boundaries. The dotted line represents approximately the line of control between India and Pakistan. The final status of Jammu and Kashmir has not yet been agreed upon by the parties.

Please note: The boundaries and names shown and the designations used on this map do not imply official acceptance or endorsement by IOM.



LIVING CONDITIONS IN PAKISTAN

## Current Living Conditions of Undocumented Afghans in Pakistan



**Overall 80%** of Undocumented Afghan returnees from this week lived in **rented houses**, followed by **9%** in **camps**, whereas the remaining **11%** comprise of families that lived in **'spontaneous settlements or with a relative'**.

There are differences at the provincial level, where for example in **Balochistan and Sindh all (100%)** of Undocumented Afghan returnees reported living in **rented houses**, followed by **86%** in **Punjab**, and **68%** in **KPK**.

It was observed that in **Punjab 14%** of Undocumented Afghan returnees lived in a **Spontaneous settlements** followed by **10%** in **KPK** and **none** in **Balochistan or Sindh**.

Data Source: Population Census Organization, UNOCHA

**Disclaimers:** The designations employed and the presentation of material on this map do not imply the expression of any opinion whatsoever on the part of the Secretariat of the United Nations concerning the legal status of any country, territory, city or area or of its authorities, or concerning the delimitation of its frontiers or boundaries. The dotted line represents approximately the line of control between India and Pakistan. The final status of Jammu and Kashmir has not yet been agreed upon by the parties.

Please note: The boundaries and names shown and the designations used on this map do not imply official acceptance or endorsement by IOM.



\* The Response for "Own House" relates to the fact that land/house is bought in the name of Pakistani relatives.