



Overall returnees through **Torkham and Chaman** since January 2018 **5,385**

For this reporting period **174** Interviews were conducted comprising of the following categories

***Undocumented Families**
81.6%

***Undocumented Individuals travelling with documented families**
16.1%

***Undocumented Individuals Travelling Alone**
2.3%

* Interviews were conducted at both transit points, Torkham and Chaman/Spinboldak

WHO IS AN UNDOCUMENTED AFGHAN

- Individuals with No Documents
- Individuals with No Passport or Lapsed Visa
- Individuals with Tazkira
- Individuals with Expired POR Card
- Individuals with ACC Token

87.7%
Individuals with no documents
Afghans who do not have any legal document (POR, ACC, VISA)

<1%
Individuals with no Passport or Lapsed Visa
Expired as well as valid Afghan Passport holders without containing valid visa

9.6%
Individuals with Tazkira
Afghan ID card that comes under the undocumented Afghans category

0%
Individuals with Expired POR Card
Proof of Registration (POR) cards that are expired before 2015

2.6%
Individuals with ACC Token
undocumented category until the issuance of ACC Card



701 Undocumented Afghan individuals returned to Afghanistan through the **Torkham and Chaman/Spin Boldak** border. **347** individuals used the **Torkham** border crossing whilst **354** individuals crossed through **Chaman/Spin Boldak** border.

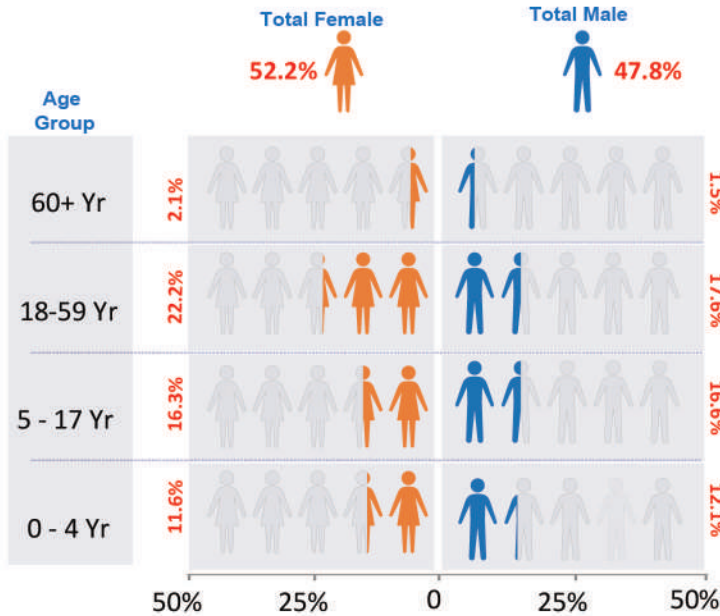
Respondents by Gender



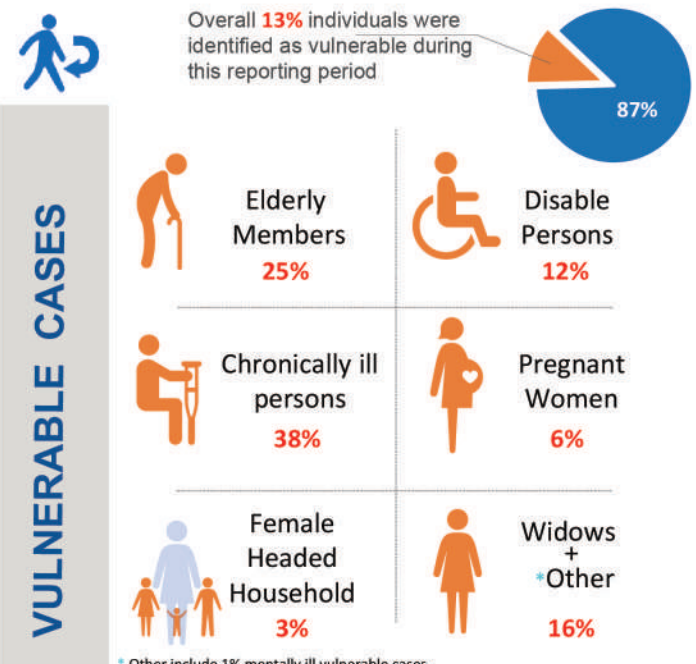
Age Group of respondents

Age Group	Gender	Total %
5 - 17 Yr		3%
18 - 59 Yr		92%
60 + Yr		5%

Age-Gender Disaggregation (Individuals)



Overall **13%** individuals were identified as vulnerable during this reporting period

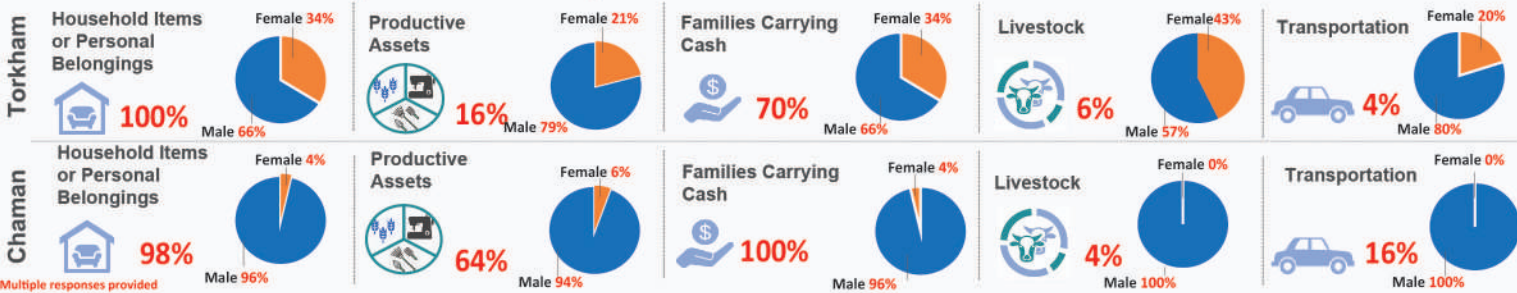


TRANSPORT & ASSETS

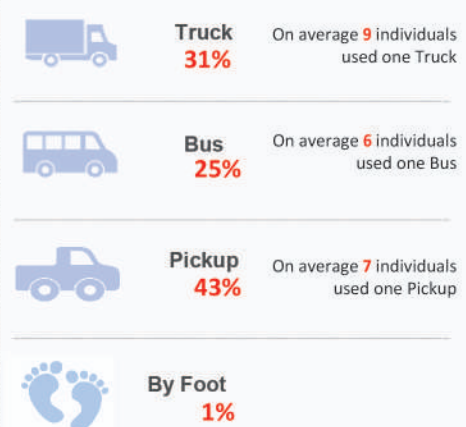
Overall **127** vehicle crossed from **Torkham and Chaman/Spinboldak** Border. Majority of the returnees used **Pickup and Trucks (43% and 31%)** to return back. To return back **Cash & House hold items** were reported as top priority assets.



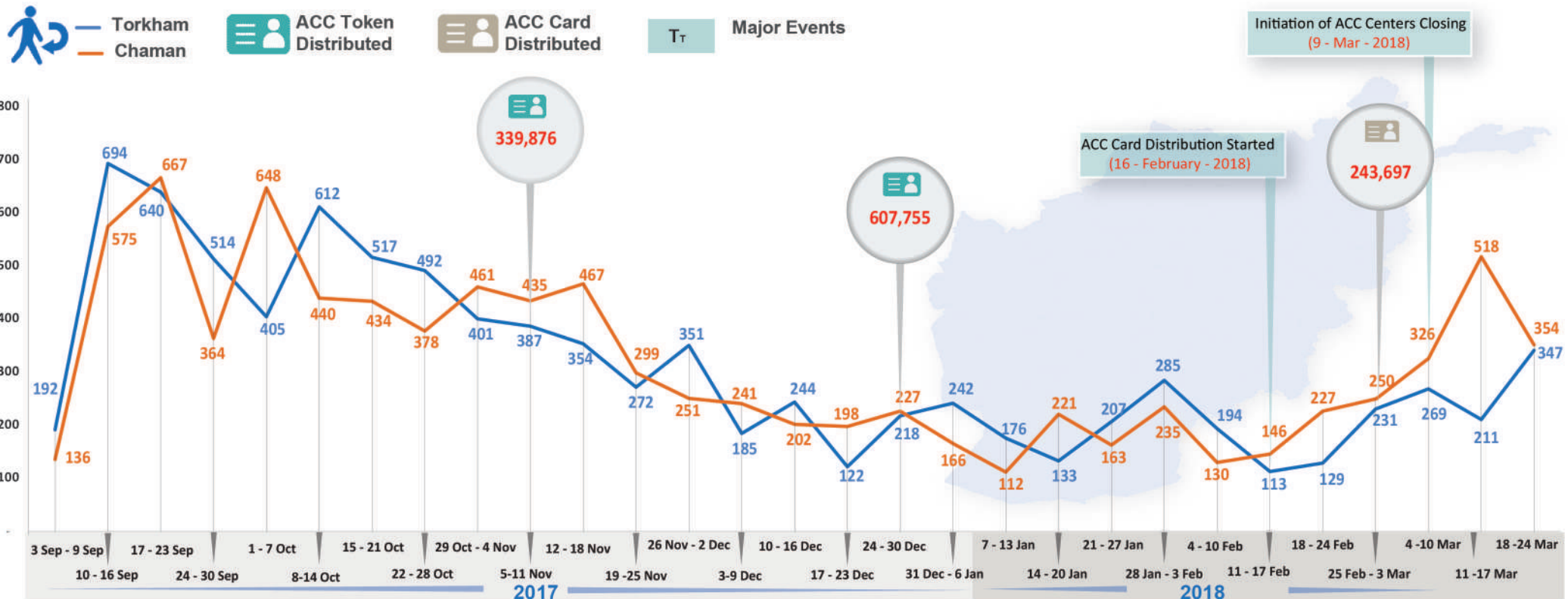
* % of Households travelling with assets to Afghanistan



Transport type Summary

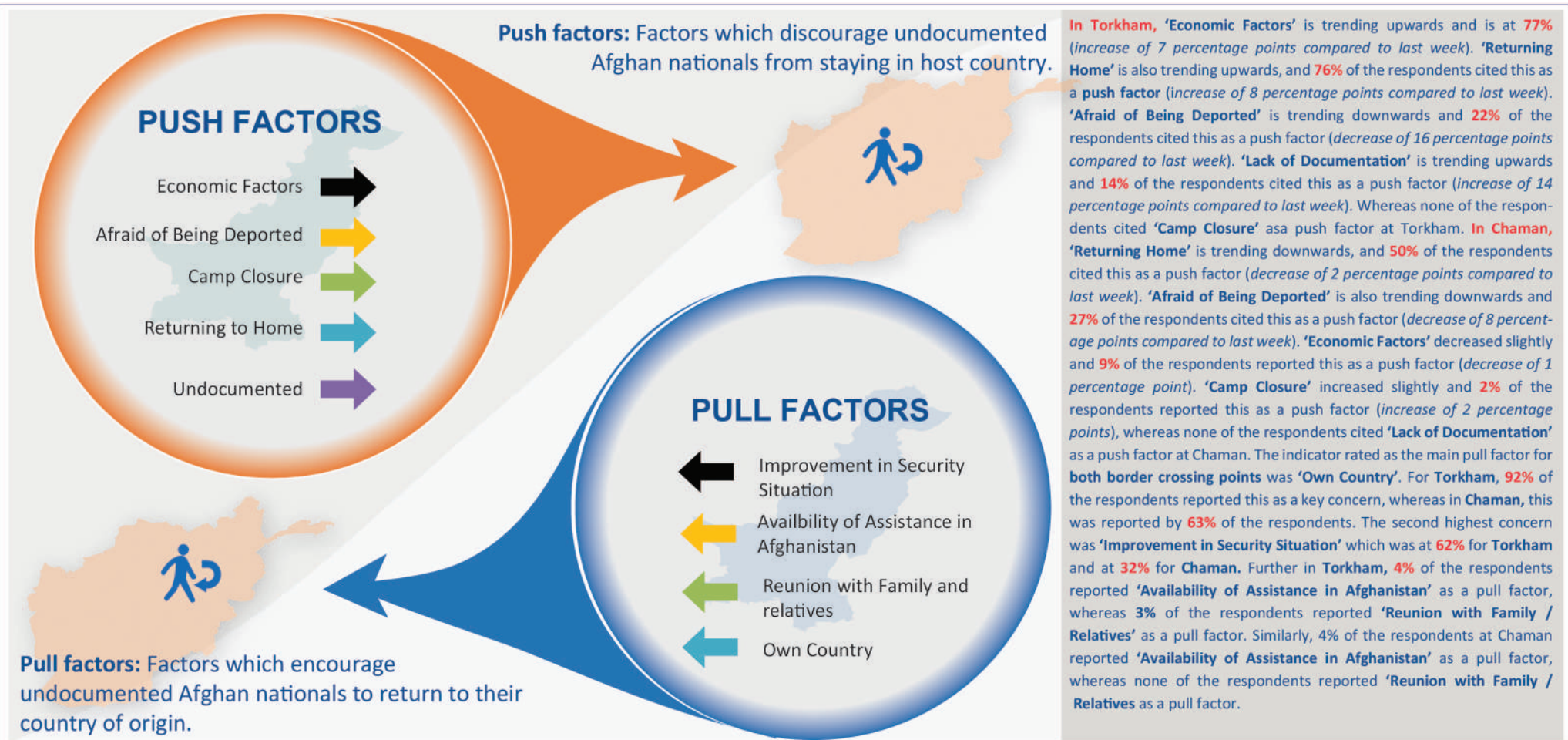


RETURNS & ACC CARD DISTRIBUTION

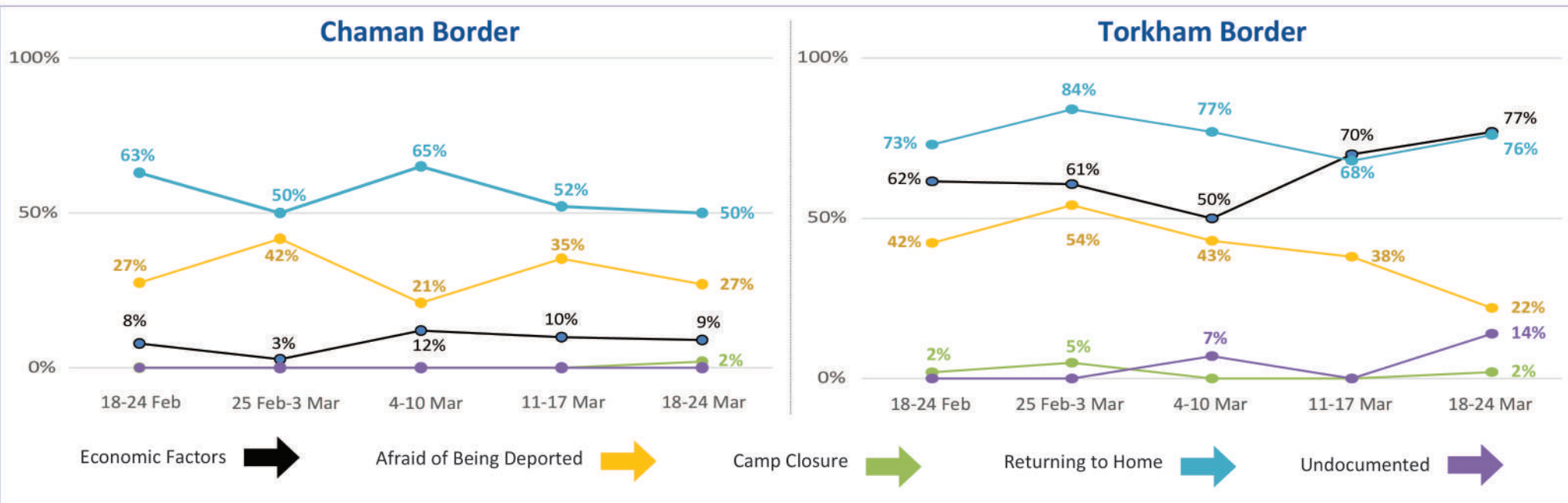




PUSH AND PULL FACTOR RECORDED BASED ON RETURNEES RESPONSE



PUSH Factors (Weekly Trend)



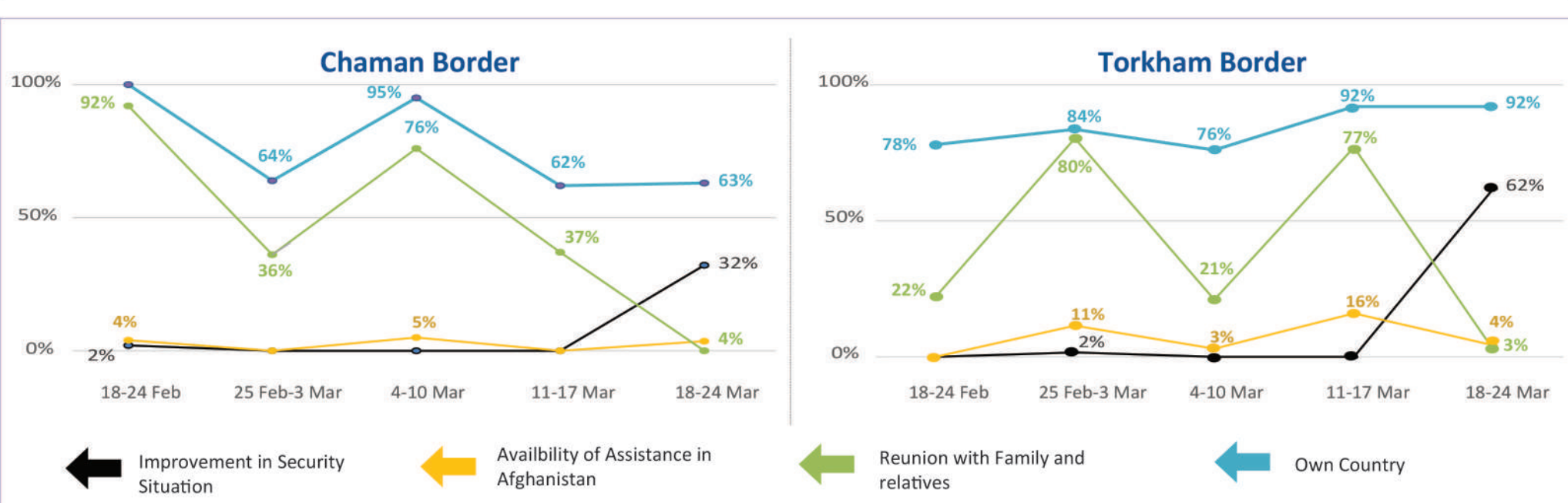
Top three ranked destinations in Afghanistan, preferred by returnees
Selected destinations are the top ranked provinces based on the PUSH Factors responses collected by field team.

RANK 1
Nangarhar

RANK 2
Kandhar

RANK 3
Kabul

PULL Factors (Weekly Trend)



Top three ranked destinations in Afghanistan, preferred by returnees
Selected destinations are the top ranked provinces based on the PULL Factors responses collected by field team.

RANK 1
Nangarhar

RANK 2
Kandhar

RANK 3
Kabul

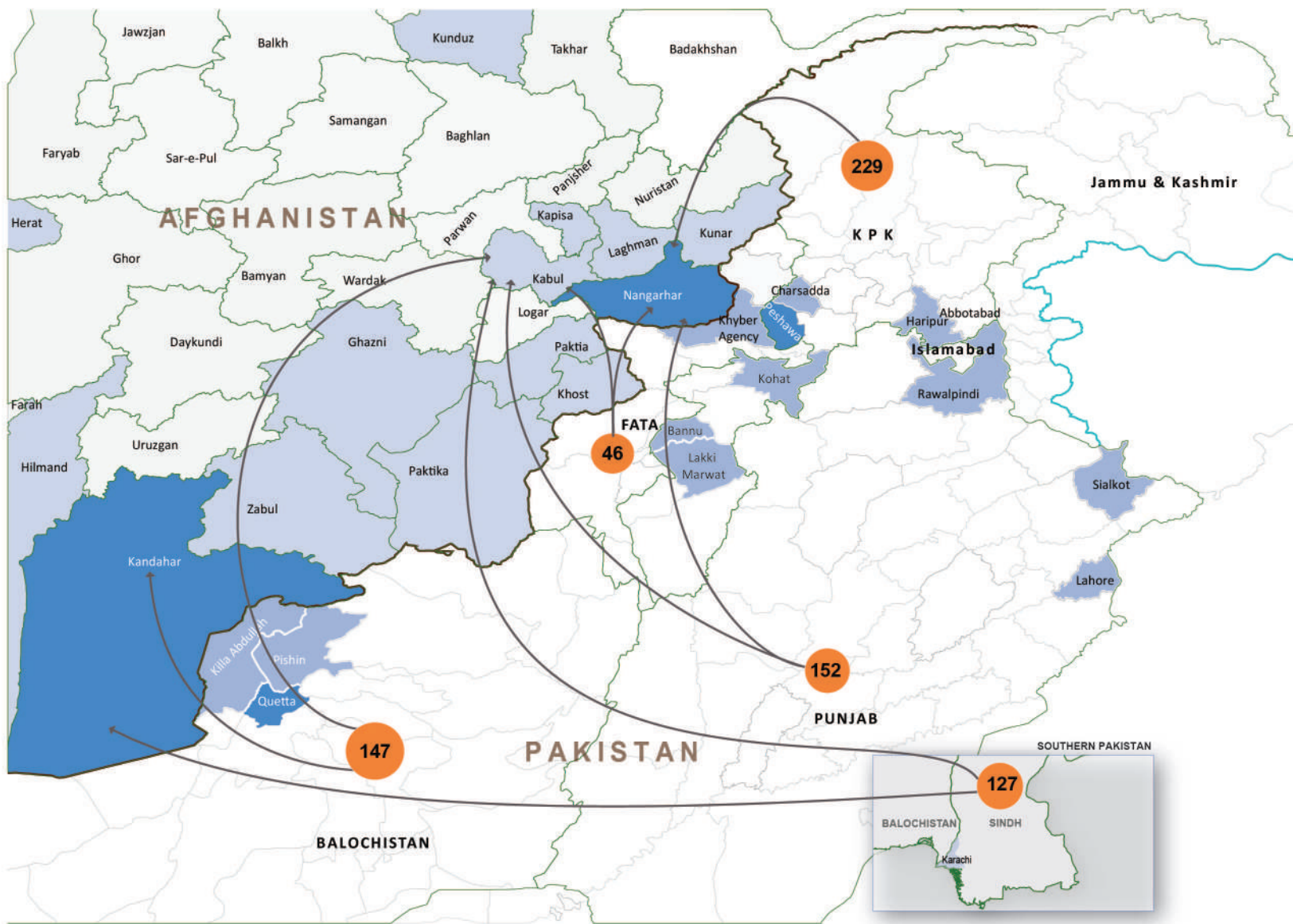


Flow Monitoring - Spontaneous Returns of Undocumented Afghans from Pakistan

18th Mar - 24th Mar, 2018

HIGH RETURN AREAS

Population Movement Trend for Spontaneous Returns of Undocumented Afghans from Pakistan



AFGHANISTAN



The **top 5 destination** provinces for returns are

- Nangarhar (19.6%)
- Kandhar (19.5%)
- Kabul (19%)
- Laghman (5.8%)
- Paktia (3.9%)

PAKISTAN



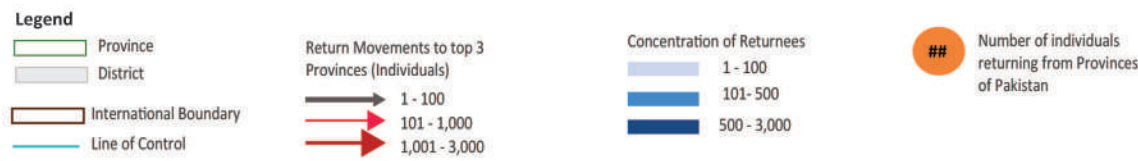
The largest **proportion of returns** is from:

- Khyber Pakhtunkhwa (33%)
- Punjab (22%)
- Balochistan (21%)
- Sindh (18%)
- FATA (7%)

Data Source: Population Census Organization, UNOCHA

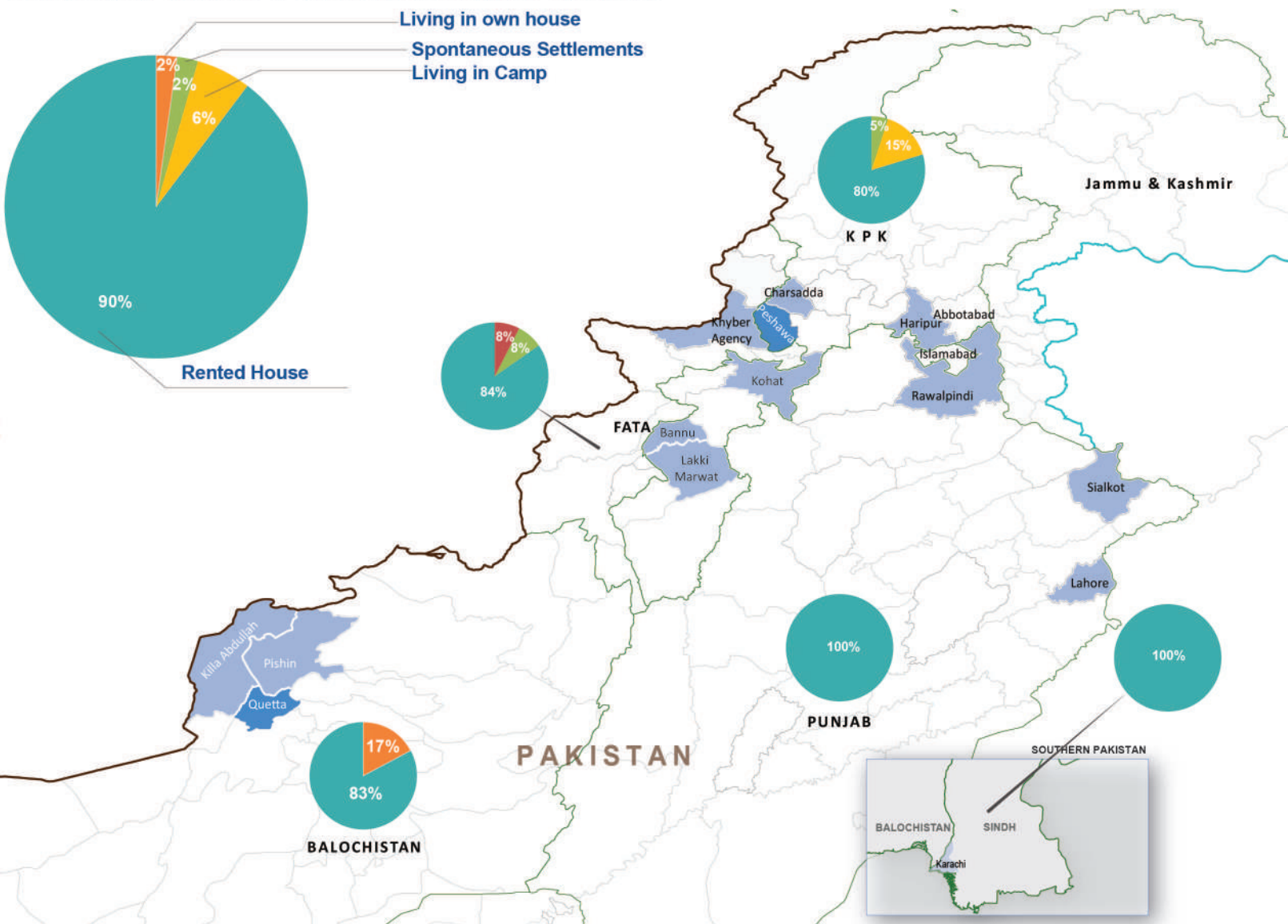
Disclaimers: The designations employed and the presentation of material on this map do not imply the expression of any opinion whatsoever on the part of the Secretariat of the United Nations concerning the legal status of any country, territory, city or area or of its authorities, or concerning the delimitation of its frontiers or boundaries. The dotted line represents approximately the line of control between India and Pakistan. The final status of Jammu and Kashmir has not yet been agreed upon by the parties.

Please note: The boundaries and names shown and the designations used on this map do not imply official acceptance or endorsement by IOM.



LIVING CONDITION IN PAKISTAN

Current Living Condition of Undocumented Afghans in Pakistan



Overall 90% of the Undocumented Afghans residing in Pakistan live in **rented houses**, followed by **6%** in **camps**, whereas the remaining **4%** comprise of families that live in **spontaneous settlements** and/or in their **own houses**.

There is a significant difference at the provincial level, where for example **100%** of undocumented Afghan families residing in **Sindh and Punjab** live in **rented houses** in comparison to **FATA (84%)**, **Balochistan (83%)** and **Khyber Pakhtunkhwa (80%)**.

It was observed that in **Balochistan 17%** of undocumented Afghan families reside in their **own houses**, however **no other province** reported families living in their **own houses**.

Data Source: Population Census Organization, UNOCHA

Disclaimers: The designations employed and the presentation of material on this map do not imply the expression of any opinion whatsoever on the part of the Secretariat of the United Nations concerning the legal status of any country, territory, city or area or of its authorities, or concerning the delimitation of its frontiers or boundaries. The dotted line represents approximately the line of control between India and Pakistan. The final status of Jammu and Kashmir has not yet been agreed upon by the parties.

Please note: The boundaries and names shown and the designations used on this map do not imply official acceptance or endorsement by IOM.



* The Response for "Own House" relates to the fact that land/house is bought in the name of Pakistani relatives.