

EMERGENCY EVENT TRACKING

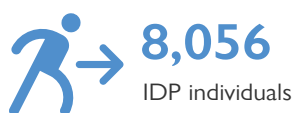
Data collection: 25 July 2021

CONFLICT



The DTM Emergency Event Tracking (EET) is deployed to track sudden displacement and population movements, provide more frequent updates on the scale of displacement, and quantify the affected population when needed. As a subcomponent of the new Mobility Tracking methodology in Sudan ([Round One](#)), and activated on a need basis, EET utilises a broad network of key informants to capture best estimates of the affected population presence per location – a useful tool for humanitarian response planning and design.

Event Overview



DTM teams activated EET to monitor the displacement of individuals affected by inter-communal violence across villages in Kalogi, South Kordofan over the issue of land ownership. Clashes erupted on 5th June 2021 and involved the Kenana, Kawahla, and Hawazma (Dar Ali) tribes. For more information, please see [EET Kalogi, South Kordofan Update 001](#).

The second EET update estimates a total number of 8,056 individuals (1,311 households) are currently seeking shelter in Alrhmaniya (20%), Merefain (16%), Debibet Juma (9%), Hai Um Naeem (6%), and Um Mawan (5%), other villages across the Abu Jubayhah locality (21%), as well as Al Leri (12%) and Ar Rashad localities (11%). Since the last update, DTM teams collected data from an additional 12 displacement sites.

Field teams indicate that 32 individuals were killed, 12 individuals were injured, and 531 individuals reported lost goods, cattle, and/or livestock. All displaced individuals are Sudanese nationals. DTM teams identified at least 1,170 cases of additional vulnerabilities in need of assistance and support. Based on a ranking scale, the three priority needs across the caseload are Food, Emergency Shelter, Non-Food Items.

Priority Needs

(Ranking scale)



Food

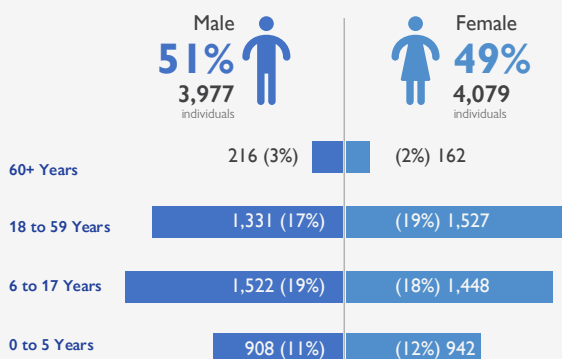


Emergency shelter



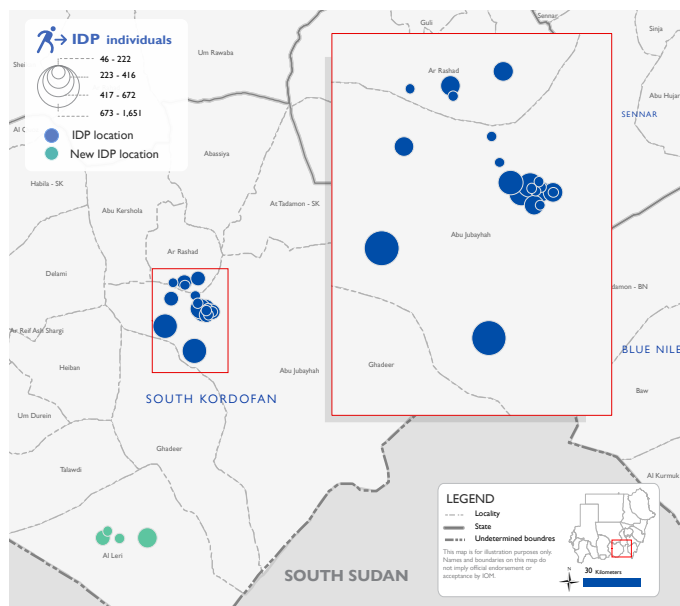
Non-food items

Demographics

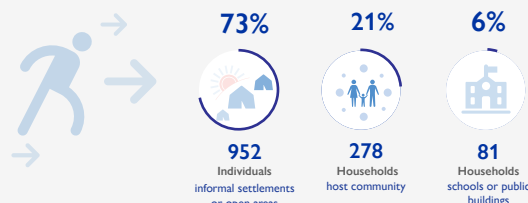


Return Intention

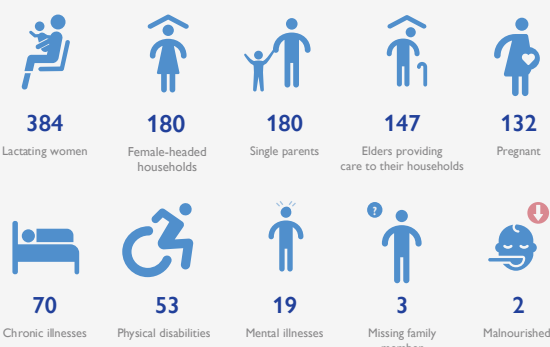
Data collected through the return intention indicator suggests that 4,621 IDPs (57%) intend to remain in the same place, with 2,476 (31%) individuals intending to return to their locations of origin upon improvement of the security situation and 959 IDPs (12%) indicating unknown intentions due to uncertainty of the security situation.



Shelter Indicator



Vulnerabilities



IOM DISCLAIMER

The opinions expressed in the report are those of the authors and do not necessarily reflect the views of the International Organization for Migration (IOM). The designations employed and the presentation of material throughout the report do not imply the expression of any opinion whatsoever on the part of IOM concerning the legal status of any country, territory, city or area, or of its authorities, or concerning its frontiers or boundaries.

IOM is committed to the principle that humane and orderly migration benefits migrants and society. As an intergovernmental organization, IOM acts with its partners in the international community to: assist in the meeting of operational challenges of migration; advance understanding of migration issues; encourage social and economic development through migration; and uphold the human dignity and well-being of migrants.