

The objective of the Emergency Tracking Tool (ETT) is to collect information on large and sudden population movements. Information is collected through key informant interviews or direct observation. This dashboard provides information on movements which occurred from 25 June to 4 July 2021 in two sites of Lac Province.

- Following a kidnapping perpetrated by a Non-State Armed Group on 20 June 2021 in the *sous-préfecture* of Liwa (*Département* of Fouli), 150 households of 809 individuals left the site of Haoura I (located in the same *sous-préfecture*) in a preventive manner and arrived on 25 June 2021 at the site of Ngourtou-Koumboua located in the *sous-préfecture* of Baga-Sola (Kaya department).
- On 28 June and 4 July 2021, following a clash between two communities on 17 June 2021 in the village of Layrom (*sous-préfecture* of Bol, *Département* of Mamdi), 95 households of 461 individuals left this village and neighbouring villages of Kolorom, Kemi and Bolorom. Among them, 44 households of 251 individuals took refuge in the Ngourtou Koumboua site located in the *sous-préfecture* of Baga-Sola (*Département* of Kaya) and 51 households of 210 individuals in the site of Melea I located in the *sous-préfecture* of Bol (*Département* of Mamdi).

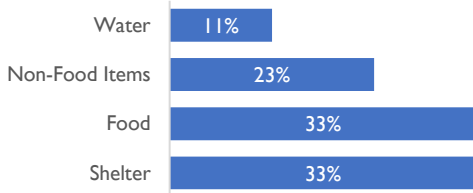
METHODOLOGY : Data was collected through observation and interviews with key informants in host locations

SUMMARY OF EVENTS

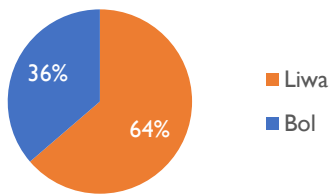
Number Internally Displaced Persons (IDPs)



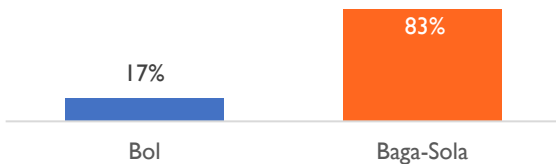
Priority needs



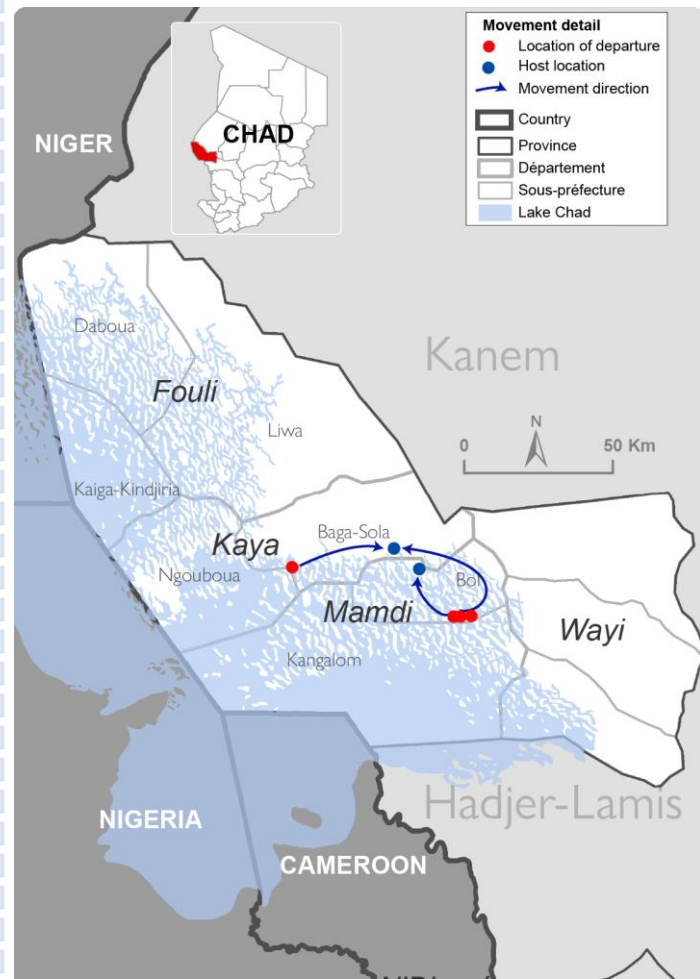
Locations of departure of IDPs



Host locations of IDPs



Displacement information



This map is for illustration purposes only. The depiction and use of boundaries, geographic names and related data shown on maps and included in this report are not warranted to be error free nor do they imply judgment on the legal status of any territory, or any endorsement or acceptance of such boundaries by IOM.

#	Date of movement	Displaced population	Location of departure	Population category	Host sous-préfecture	Host location	Reason for movement	Means of transport	Priority needs		
1	25/06/2021	150 households, 809 individuals	Haoura (Liwa)	IDPs	Baga Sola	Site of Ngourtou-Koumboua	Preventive (after a kidnapping)	On foot and riding animals	Shelter	Food	Water
2	28/06/2021	44 households, 251 individuals	Layrom (Bol)	IDPs	Baga Sola		Site of Melea I	Armed attack	On foot, by boat and riding animals	Shelter	Food
3	04/07/2021	51 households, 210 individuals	Kemi et Bolorom (Bol)	IDPs	Bol						