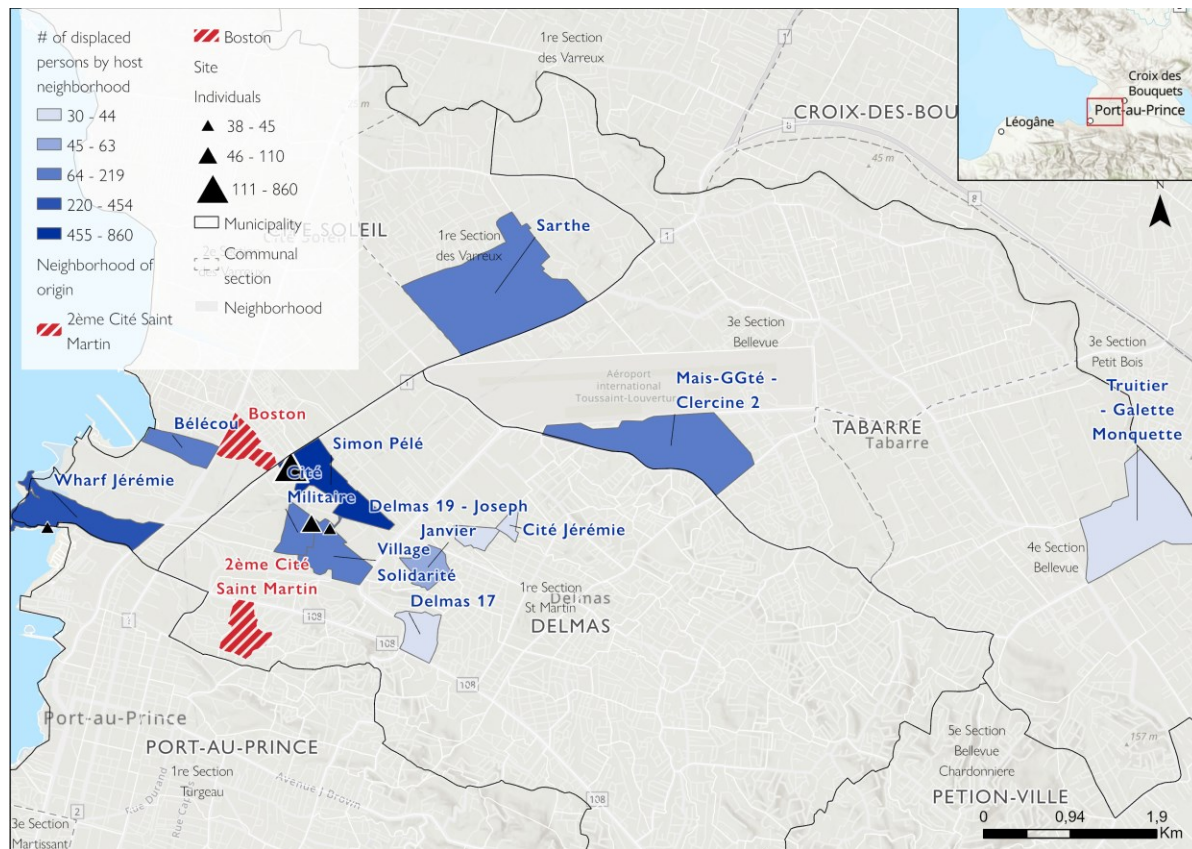
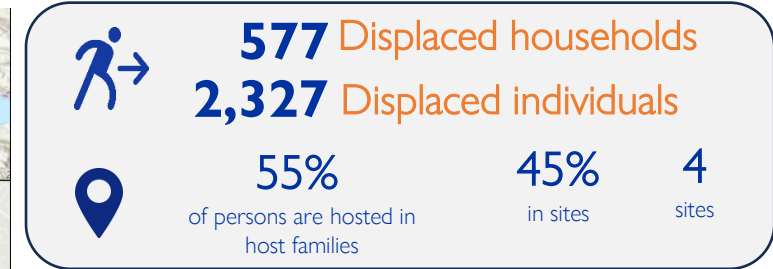


This information was collected following armed clashes in the neighborhoods of Boston in the municipality of Cit  Soleil, which occurred on 11 September 2024 and in the neighborhood of 2nd Cit  Saint Martin in the municipality of Delmas, on 10 September 2024. A total of **2,327** individuals were displaced as a result of these clashes, with 2,061 due to ones in Boston and 266 due to those in 2nd Cit  Saint Martin. The majority of the displaced persons (55%) took refuge with host families, while 45% in sites (1,053 individuals in 4 sites, including 1 site existing prior to these incidents and 3 newly established sites).

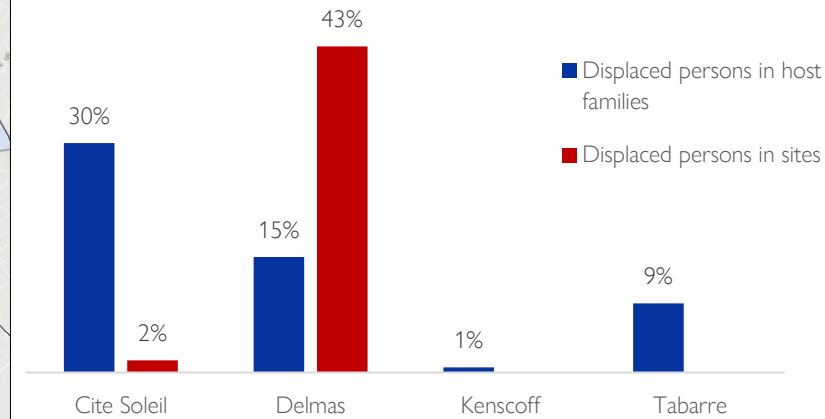
### Origins and host locations of displaced persons



### Demography



### Municipalities hosting displaced populations



This map is for illustration purposes only. The depiction and use of boundaries, geographic names and related data shown on maps and included in this report are not warranted to be error free nor do they imply judgment on the legal status of any territory, or any endorsement or acceptance of such boundaries by IOM.

## Displacement following clashes in Boston (Municipality of Cité Soleil)

**520** Displaced households    **2 061** Displaced individuals

### Sites hosting displaced persons affected by these incidents

Department	Municipality	Municipality section	Neighborhood	Site name	Status of the site	Households newly displaced following these incidents	Individuals newly displaced following these incidents	Households present on the site before these incidents	Individuals present on the site before these incidents	Total of households on the site	Total of individuals on the site
West	Delmas	1re Section St Martin	Simon Pélé	Église Baptiste le Bon Bergé	Created following these incidents	210	860	0	0	210	860
West	Delmas	1re Section St Martin	Cité Militaire	Paroisse Notre Dame de Lourde	Created following these incidents	40	110	0	0	40	110
West	Delmas	1re Section St Martin	Village Solidarité	Église Evangelique Emanuel	Created following these incidents	11	45	0	0	11	45
West	Cité Soleil	1re Section des Varreux	Wharf Jeremie	Nan Martelly	Already existing before these incidents	10	38	227	795	237	833
						<b>271</b>	<b>1 053</b>				

### Displaced individuals hosted by host families

Department	Municipality	Municipality section	Neighborhood	Households	Individuals
West	Tabarre	3e Section Bellevue	Mais gate Clercine 2	60	185
West	Cite Soleil	1re Section des Varreux	Wharf Jeremie	54	216
West	Cite Soleil	2e Section des Varreux	Sarthe	35	178
West	Delmas	1re Section St Martin	Cite Militaire	27	109
West	Cité Soleil	1re Section des Varreux	Belecour	25	120
West	Delmas	1re Section St Martin	Village Solidarite	20	83
West	Delmas	1re Section St Martin	Delmas 19	15	63
West	Delmas	1re Section St Martin	Cite Jeremie	7	30
West	Delmas	1re Section St Martin	Cite aux Cayes	6	24
				<b>249</b>	<b>1,008</b>

## Displacement following clashes in 2<sup>nd</sup> Cité Saint-Martin (Municipality of Delmas)

 **57** Displaced households      **266** Displaced individuals

### Displaced individuals hosted by host families

Department	Municipality	Municipality section	Neighborhood	Households	Individuals
West	Cité Soleil	1re Section des Varreux	Wharf Jeremie	41	200
West	Delmas	1e Section Saint Martin	Delmas 17	7	30
West	Delmas	1e Section Saint Martin	Cite aux Cayes	5	20
West	Kenscoff	2e Section Bongard	Non applicable (area located out of the Metropolitan Area of Port-au-Prince)	4	16
				<b>57</b>	<b>266</b>