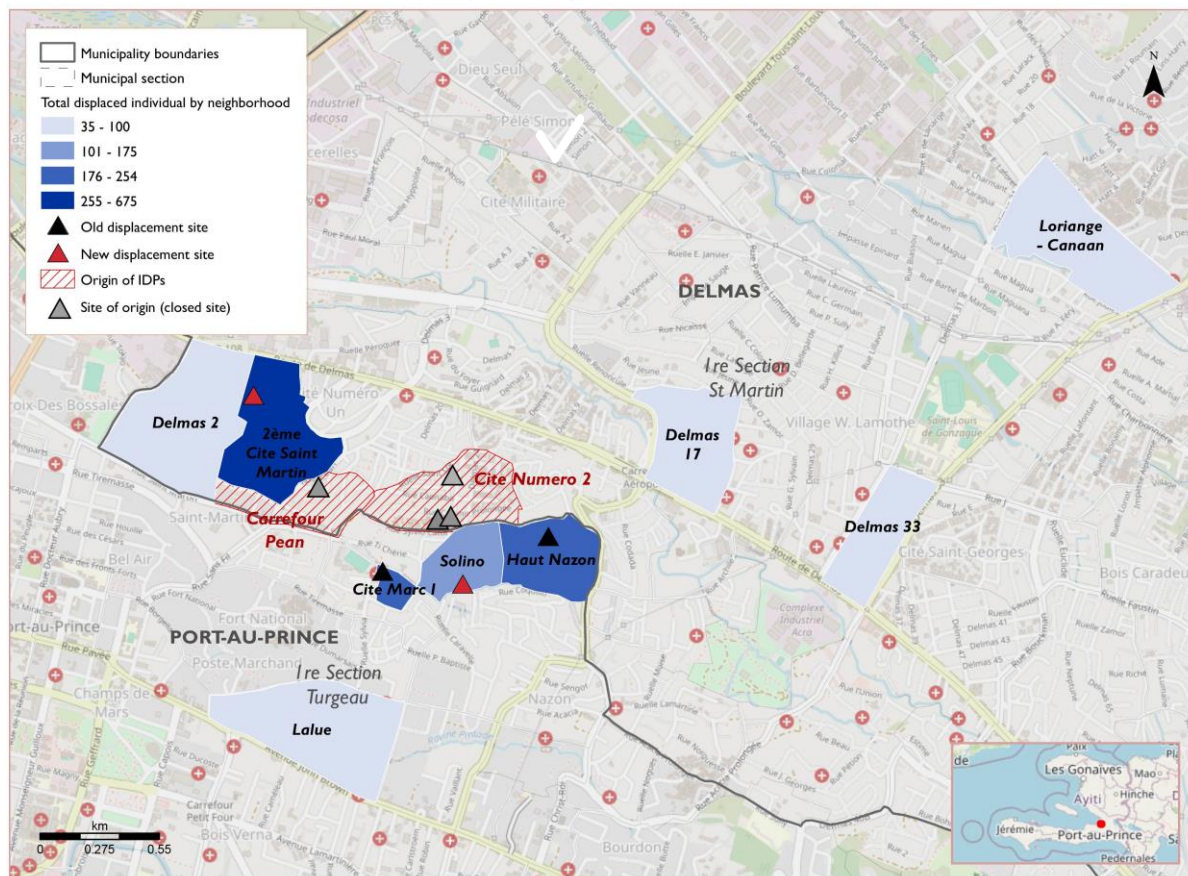
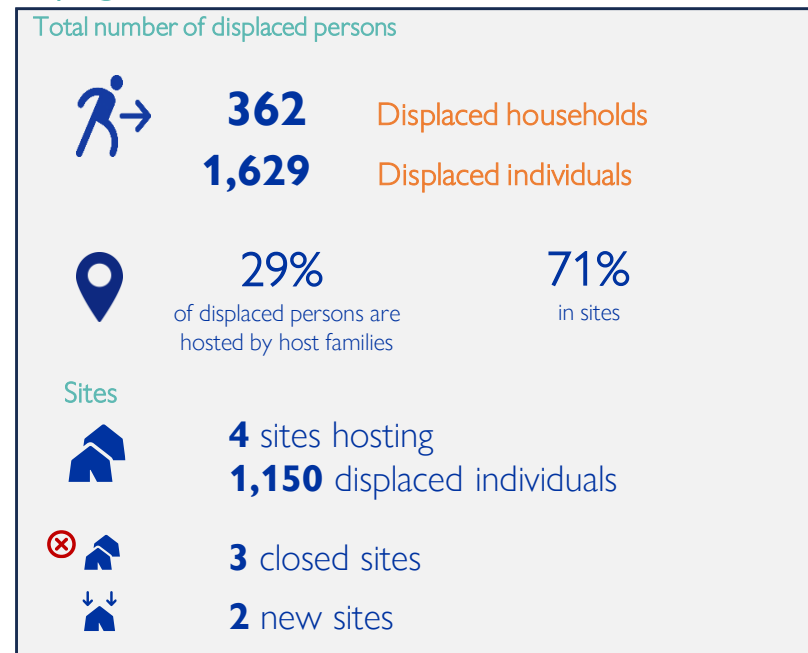


This information was gathered following an armed attack that occurred on 25 April 2024, in the commune of Delmas, specifically in the neighborhood of Cité Numéro 2. As a result of this incident, individuals who were sheltered in three sites located in the neighborhood of Cité Numéro 2 and Carrefour Pean completely evacuated these sites, leading to the displacement of internally displaced persons (IDPs). In total, 1,629 individuals were displaced from these three sites, along with residents from the Cité Numéro 2 neighborhood. The IDPs headed towards the communes of Port-au-Prince and Delmas. Among them, 29% found refuge with host families, while 71% settled in four sites, including two newly established sites and two existing sites. Updates will be provided as the destinations of other individuals are identified.

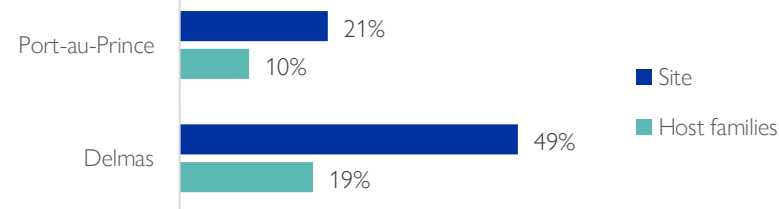
Origins and host locations of displaced persons



Key figures (see next pages for more details on host locations)



Host municipality of IDPs



This map is for illustration purposes only. The depiction and use of boundaries, geographic names and related data shown on maps and included in this report are not warranted to be error free nor do they imply judgment on the legal status of any territory, or any endorsement or acceptance of such boundaries by IOM.

Sites accommodating displaced individuals affected by these incidents

Municipality	Municipality section	Neighborhood	Site name	Site status	Households newly displaced following these incidents	Individuals newly displaced following these incidents	Households present on the site before these incidents	Individuals present on the site before these incidents	Total households displaced on site	Total individuals displaced on site	Variation	Density (observation) before the incidents
Port-au-Prince	1re Section Turgeau	Cite Marc I	Parc Celtique	Existing site	50	250	105	525	155	775	+48%	Normal density
Delmas	1re Section St Martin	2eme cite saint martin	Eglise Mission Évangélique D'Haiti (Delmas 6)	New site	150	600	0	0	150	600		
Delmas	1re Section St Martin	Haut Nazon	Morne de prière de Solino	Existing site	40	200	52	260	92	460	+77%	Moderately dense
Port-au-Prince	1re Section Turgeau	Solino	Terrain Ti Claude	New site	19	100	0	0	19	100	NA	
TOTAL					259	1 150						

Displaced individuals staying with host families

Municipality	Municipality section	Neighborhood	Displaced households	Displaced individuals
Delmas	1re Section St Martin	Delmas 17	20	100
Port-au-Prince	1re Section Turgeau	Solino	15	75
Delmas	1re Section St Martin	2eme cite saint martin	15	75
Delmas	1re Section St Martin	Delmas 33	11	55
Port-au-Prince	1re Section Turgeau	Haut Nazon	10	54
Delmas	1re Section St Martin	Delmas 2	10	50
Port-au-Prince	1re Section Turgeau	Lalue	15	35
Delmas	1re Section St Martin	Loriange - Canaan	7	35
			103	479

Sites emptied of their population

Site name	Type of site	Site status	Households present on the site before these incidents	Individuals present on the site before these incidents	Variations du nombre d'individus dans le site
Intitution Mixte de Salem Caonabo	School	Empty	141	797	-100%
Ecole Gesner Anglade	School	Empty	143	717	-100%
Eglise la foi Apostolique	Church	Empty	80	328	-100%