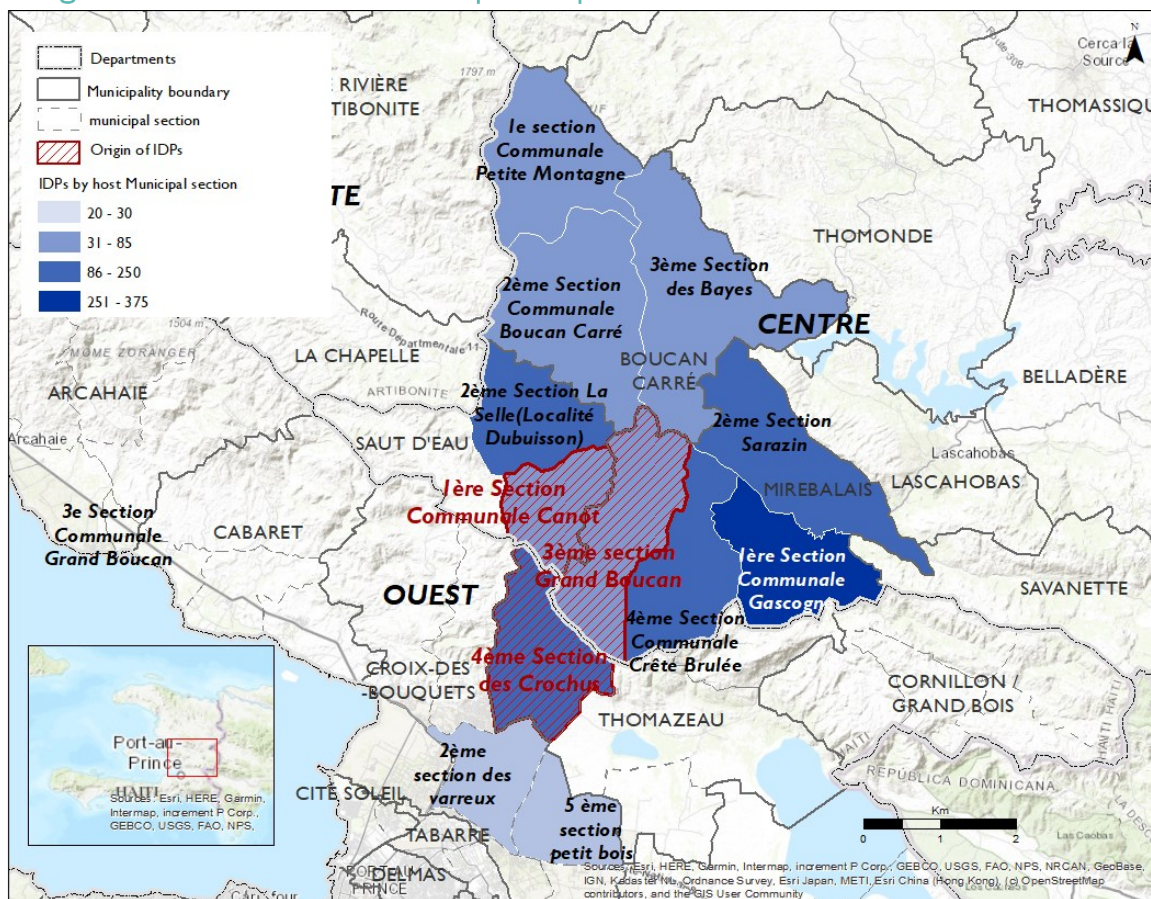


This information was collected following armed attacks that occurred on 18 February 2024 in the municipalities of Mirebalais and Saut-d'Eau located in the Center district, as well as in the municipality of Thomazeau in the district of West.

According to data collected, a total of 1,590 people (365 households) were displaced following these attacks. All of them took refuge with relatives, in host families.

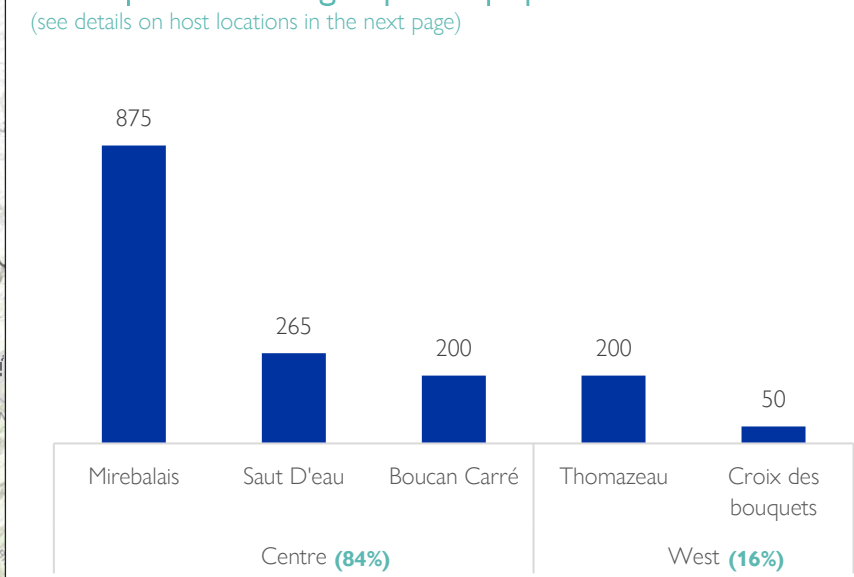
### Origins and host locations of displaced persons



### Demography



### Municipalities hosting displaced populations



# of displaced persons by host municipalities

This map is for illustration purposes only. The depiction and use of boundaries, geographic names and related data shown on maps and included in this report are not warranted to be error free nor do they imply judgment on the legal status of any territory, or any endorsement or acceptance of such boundaries by IOM.

## Detailed information on host locations of displaced populations

District	Municipality	Municipality Section	Neighborhood	# of displaced households	# of displaced individuals
Centre	Mirebalais	1ere Section Communale Gascogne	N/A*	80	375
Centre	Mirebalais	4e Section Communale Crête Brulée	N/A*	55	250
West	Thomazeau	4 eme section des crochus	N/A*	40	200
Centre	Saut D'eau	2e Section La Selle(Localité Dubuisson)	N/A*	40	190
Centre	Mirebalais	2e Section Sarazin	N/A*	35	165
Centre	Boucan Carré	2e Section Communale Boucan Carré	N/A*	20	85
Centre	Mirebalais	3e Section Communale Grand Boucan	N/A*	25	85
Centre	Saut D'eau	1re Section Communale Canot	N/A*	25	75
Centre	Boucan Carré	3e Section des Bayes	N/A*	15	60
Centre	Boucan Carré	1e section Communale Petite Montagne	N/A*	15	55
West	Croix des bouquets	5 ème section petit bois	Boutin-toka	10	30
West	Croix des bouquets	2 eme section des varreux	Lilavois Cesseless	5	20
<b>TOTAL</b>				<b>365</b>	<b>1,590</b>

\* The neighborhood level is only available in areas located in the Port-au-Prince Metropolitan Area (PAPMA)