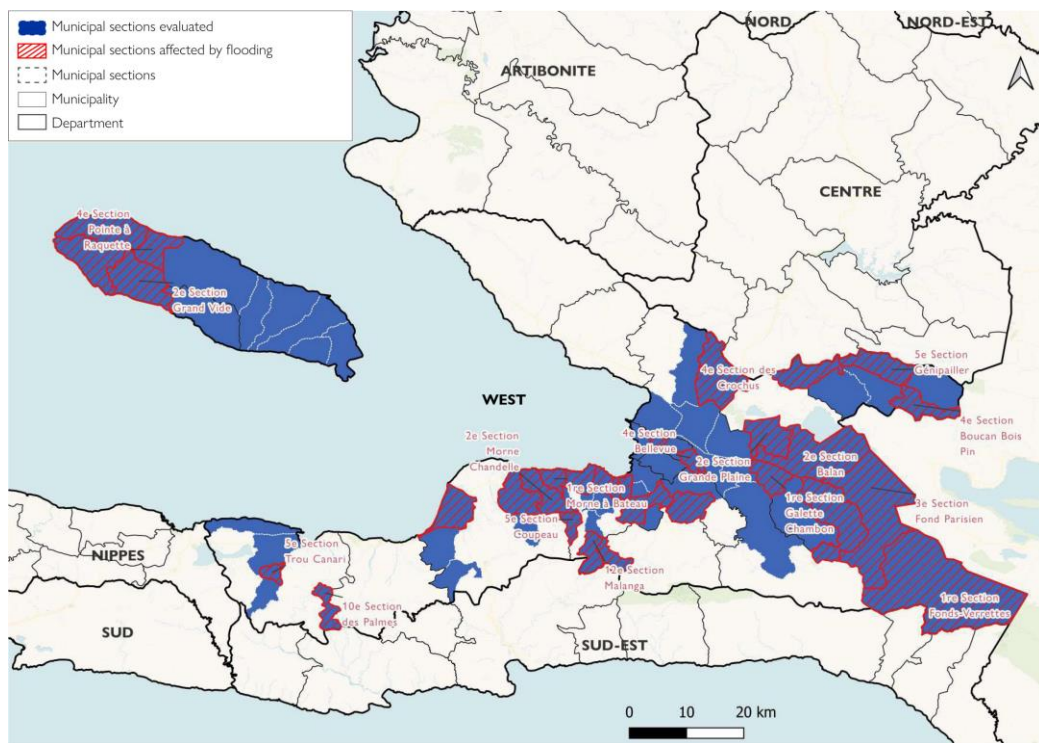


METHODOLOGY AND SUMMARY

The objective of the Emergency Tracking Tool (ETT) is to collect information on large and sudden population movements as well as security and climatic emergencies. Information is collected through phone interviews with key informants and direct observation.

This information was gathered following the floods in Haiti on **June 3, 2023**, which affected the inhabitants of several communes and led to the creation of nine new sites. The assessments were carried out with key informants by telephone. A displacement assessment of Metropolitan zone will follow this ETT. Following ETT 18.1 and 18.2, we launched our flood data collection tool with our key informants from June 6 to 15 in the West department, covering 16 communes, 62 communal sections and 352 neighborhoods. This data enabled us to update our estimate of the total number of displaced people. The results show that 9,119 people are internally displaced, including 1,826 households. Of these, 5,009 people are living in sites, including 1,166 households.

1. Map of communal sections assessed and affected by flooding in the West department



This map is provided for illustrative purposes only. The boundaries and names shown and the use of them on this map may contain errors and do not imply any judgement on the part of IOM concerning the legal status of any territory, or the official recognition or acceptance of such boundaries.

DEMOGRAPHICS

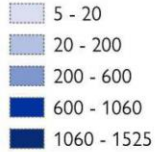


1 826 displaced households (**9 119** individuals)

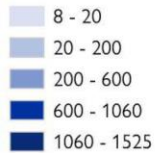
Communes	# displaced households	# displaced individuals
Cité Soleil	897	3 990
Tabarre	348	2 370
Delmas	162	654
Ganthier	100	800
Port-au-Prince	83	402
Croix-Des-Bouquets	80	200
Thomazeau	50	250
Carrefour	48	220
Gressier	31	125
Petit-Goâve	20	80
Pointe à Raquette	7	28
Total	1 826	9 119

2. Map of Displacements due to Flooding in the West Department

Communal sections for PDIs



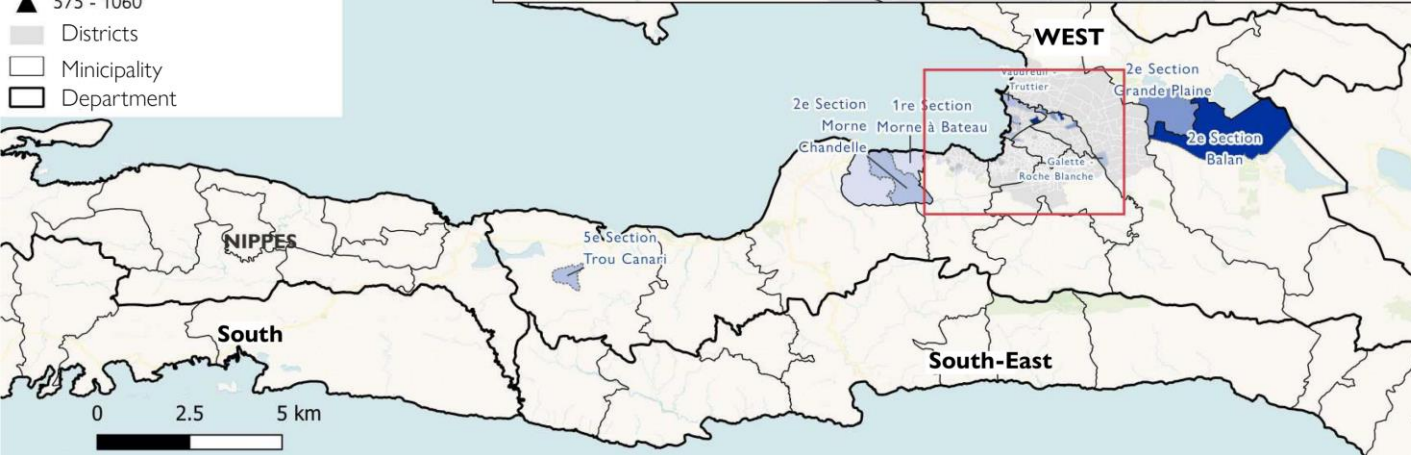
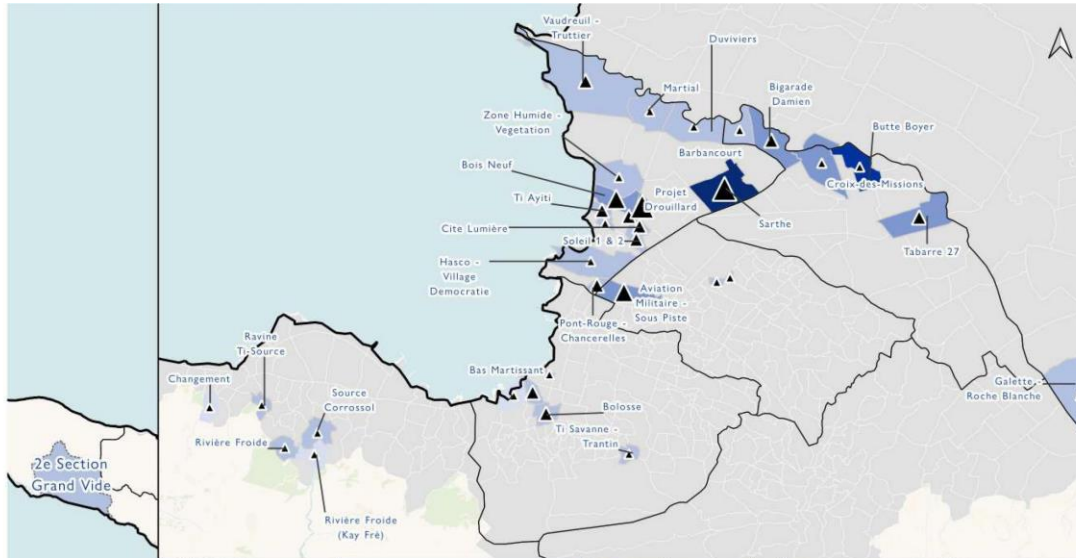
IDP reception areas



IDP reception sites



- Districts
- Minicipality
- Department



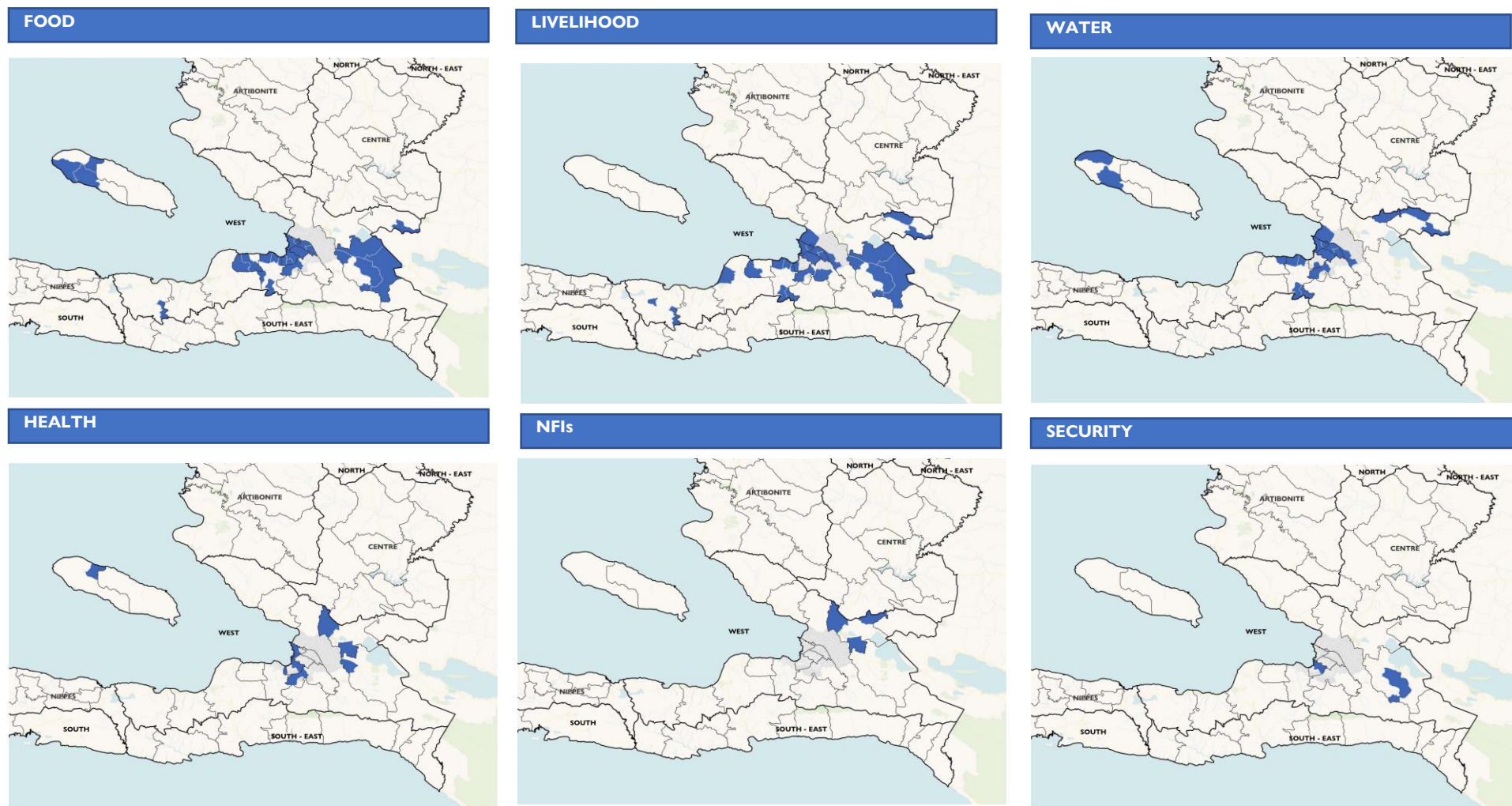
55% individuals moved to a site

SUMMARY TABLE OF INDIVIDUALS DISPLACED ON SITE

Communes	# displaced households on site	# displaced individuals on site
Cité Soleil	755	3 270
Delmas	145	575
Tabarre	93	445
Port-au-Prince	63	319
Croix-Des-Bouquets	60	150
Thomazeau	50	250
Petit-Goâve	0	0
Carrefour	0	0
Pointe à Raquette	0	0
Ganthier	0	0
Gressier	0	0
Total	1 166	5 009

This map is provided for illustrative purposes only. The boundaries and names shown and the use of them on this map may contain errors and do not imply any judgement on the part of IOM concerning the legal status of any territory, or the official recognition or acceptance of such boundaries.

3. Map of priority needs by communal section



This map is provided for illustrative purposes only. The boundaries and names shown and the use of them on this map may contain errors and do not imply any judgement on the part of IOM concerning the legal status of any territory, or the official recognition or acceptance of such boundaries.