

**EMERGENCY EVENT TRACKING**

Data collection: 22 August 2022

**FLOODING**

As a subcomponent of the Mobility Tracking methodology (Round Four), the Emergency Event Tracking (EET) tool is deployed to track sudden displacement, provide more frequent updates on the scale of displacement, and quantify the affected population when needed.

**Event Overview**



**990**  
IDP individuals

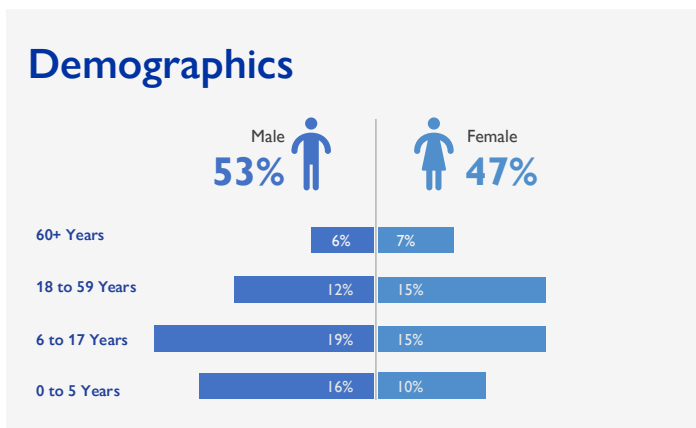
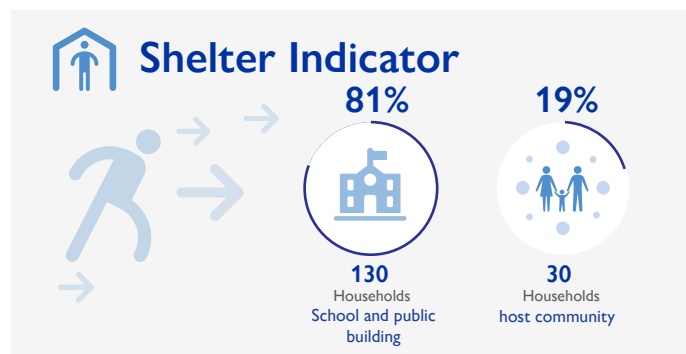
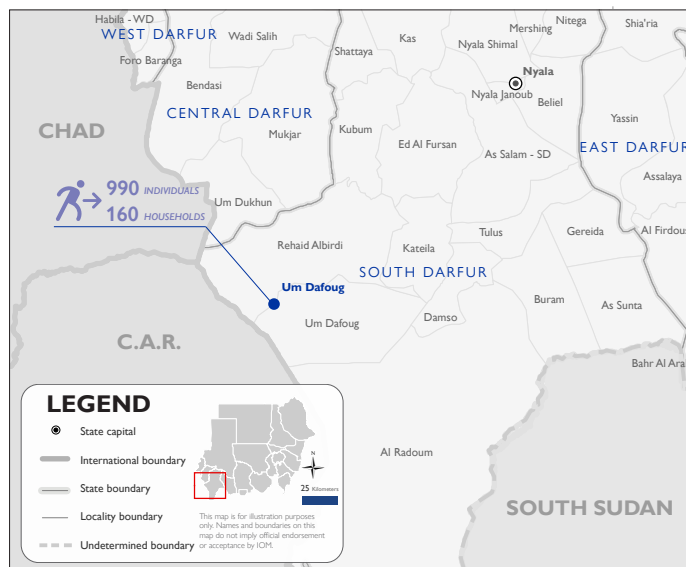


**160**  
IDP households

On 18 and 20 August 2022, heavy rains and floods affected Um Dafoug Town and the surrounding areas in Um Dafoug locality, South Darfur. Field teams report that floods have led to the collapse of Um Dafoug bridge, with field teams indicating that 130 houses were completely damaged and 70 houses were partially damaged. Furthermore, field teams report that 244 farms and three water sources were flooded, 200 latrines were completely damaged, and between 100 and 150 livestock have died.

The first EET update estimates that a total number of 990 individuals (160 households) are currently seeking shelter in public buildings and with the host community across Um Dafoug Town in Um Dafoug locality, North Darfur. The IDP caseload was originally displaced from various locations across Um Dafoug Town.

DTM field teams have confirmed that no individuals were killed, twenty individuals were injured and there are 150 reported cases of lost goods, livestock, and/or cattle. All displaced individuals are Sudanese nationals. At least 41 cases of additional vulnerabilities in need of assistance and support were identified by key informants through DTM's Protection indicator. Additionally, DTM Sudan estimates that there are approximately 149 persons with disabilities among the IDP caseload.\* Based on a ranking scale, the three priority needs across the caseload are Emergency Shelter, Nutrition, Non-Food Items.



**Return Intention**  
Data collected through the return intention indicator estimates that the entire IDP caseload (100%) intend to return to their locations of origin once they receive humanitarian assistance and are able to reconstruct their houses.



**IOM DISCLAIMER**  
The opinions expressed in the report are those of the authors and do not necessarily reflect the views of the International Organization for Migration (IOM). The designations employed and the presentation of material throughout the report do not imply the expression of any opinion whatsoever on the part of IOM concerning the legal status of any country, territory, city or area, or of its authorities, or concerning its frontiers or boundaries.  
IOM is committed to the principle that humane and orderly migration benefits migrants and society. As an intergovernmental organization, IOM acts with its partners in the international community to: assist in the meeting of operational challenges of migration; advance understanding of migration issues; encourage social and economic development through migration; and uphold the human dignity and well-being of migrants.

\* DTM Sudan adopts the WHO global estimate that approximately 15% of the total population are persons with disabilities (PwDs).



**USAID**  
FROM THE AMERICAN PEOPLE