

## EMERGENCY EVENT TRACKING

Data collection: 5 July 2021

## CONFLICT



The DTM Emergency Event Tracking (EET) is deployed to track sudden displacement and population movements, provide more frequent updates on the scale of displacement, and quantify the affected population when needed. As a subcomponent of the new Mobility Tracking methodology in Sudan (Round One), and activated on a need basis, EET utilises a broad network of key informants to capture best estimates of the affected population presence per location – a useful tool for humanitarian response planning and design.

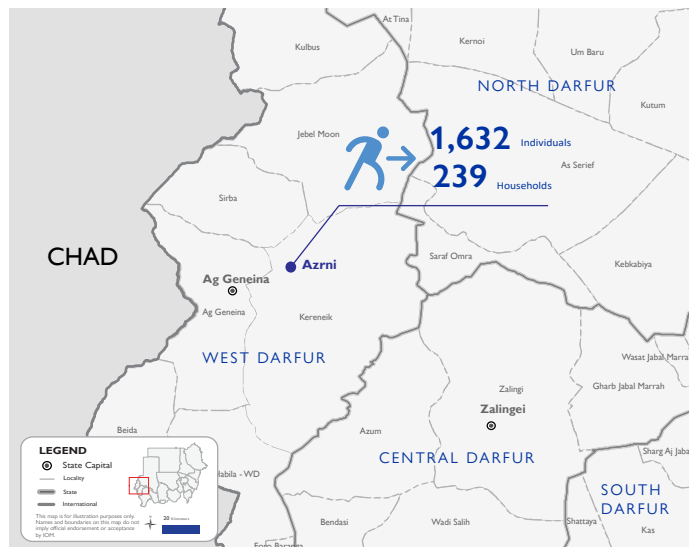
## Event Overview



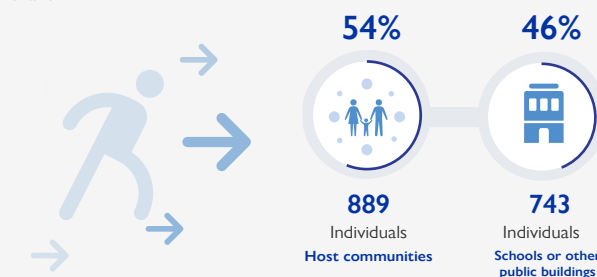
DTM teams activated EET to monitor the displacement of individuals affected by violence between the Tama and Ora tribes across villages in Kereneik locality, West Darfur. Clashes erupted on 1 July 2021 following an incident of property theft.

The first EET estimates a total of 1,632 individuals (239 households) are currently seeking shelter in Azrni village in Kereneik, West Darfur. These individuals were displaced from Lowi (24%), Kangok (20%), Hashaba Ando (14%), Bronga (10%), Gargor (10%), Umdrysi (8%), Jadeeda (7%), Umshagag (4%), Umjewgana (2%), and Gooz (1%) villages in Kereneik, West Darfur. Field teams indicate that five individuals were killed, seven individuals were injured, and 17 individuals report lost goods, cattle, and/or livestock.

All displaced individuals are Sudanese nationals. DTM teams identified at least 195 cases of additional vulnerabilities in need of assistance and support. Based on a ranking scale, the three priority needs across the caseload are food, non-food items, and emergency shelter.



## Shelter Indicator

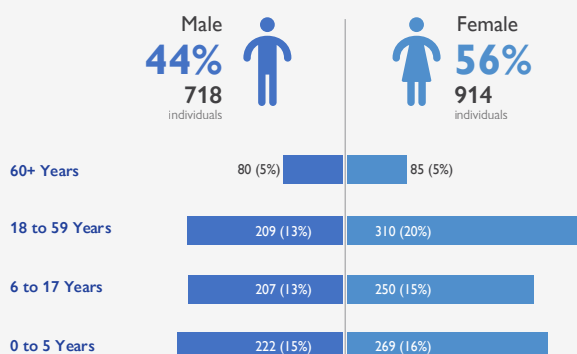


## Priority Needs

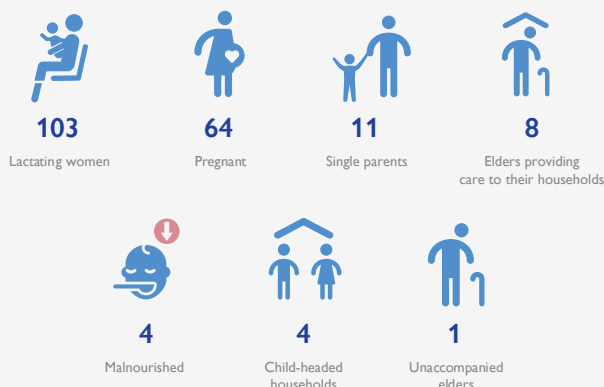
(Ranking scale)



## Demographics



## Vulnerabilities



## Return Intention

Data collected through the return intention indicator suggests that all IDPs in Azrni village (100%) intend to return to their locations of origin upon improvement of the security situation.

## IOM DISCLAIMER

The opinions expressed in the report are those of the authors and do not necessarily reflect the views of the International Organization for Migration (IOM). The designations employed and the presentation of material throughout the report do not imply the expression of any opinion whatsoever on the part of IOM concerning the legal status of any country, territory, city or area, or of its authorities, or concerning its frontiers or boundaries.

IOM is committed to the principle that humane and orderly migration benefits migrants and society. As an intergovernmental organization, IOM acts with its partners in the international community to: assist in the meeting of operational challenges of migration; advance understanding of migration issues; encourage social and economic development through migration; and uphold the human dignity and well-being of migrants.