

EMERGENCY EVENT TRACKING

Data collection: 3 April 2023

Fire



As a subcomponent of the Mobility Tracking methodology (Round Five), the Emergency Event Tracking (EET) tool is deployed to track sudden displacement, provide more frequent updates on the scale of displacement, and quantify the affected population when needed.

## Event Overview



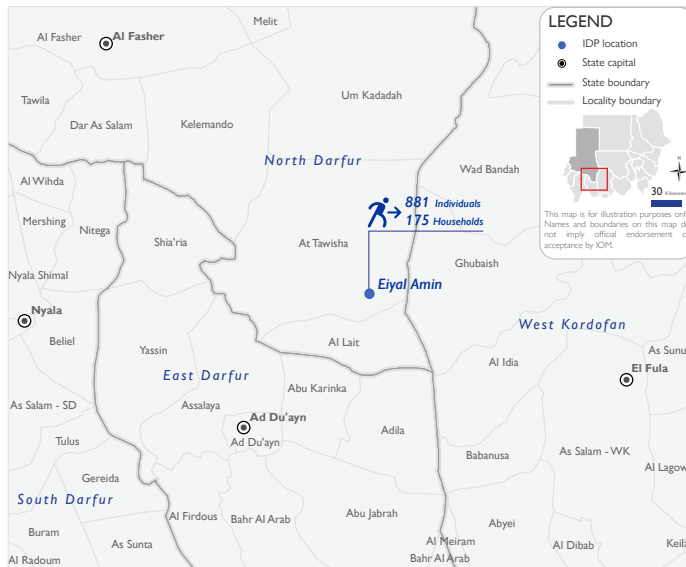
**881** ↑ **306**  
IDP individuals



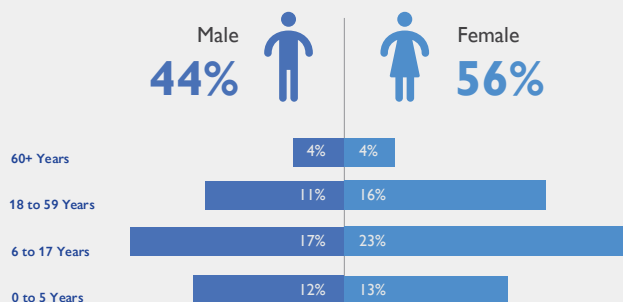
**175** ↑ **56**  
IDP households

From 27 February 2023, multiple fire incidents were reported in Eiyal Amin village of At Tawisha locality, North Darfur. For more information, please see [At Tawisha \(Eiyal Amin village\), North Darfur \(Update 001\)](#). Reportedly, Eiyal Amin village has been subject to frequent fires, resulting in more displacements. Field teams reported that 56 houses were completely destroyed and 13 were partially damaged between 16 March and 31 March 2023. The second EET update estimates a total number of 881 individuals (175 households) currently seeking shelter with relatives or neighborhoods across Eiyal Amin village of At Tawisha, North Darfur.

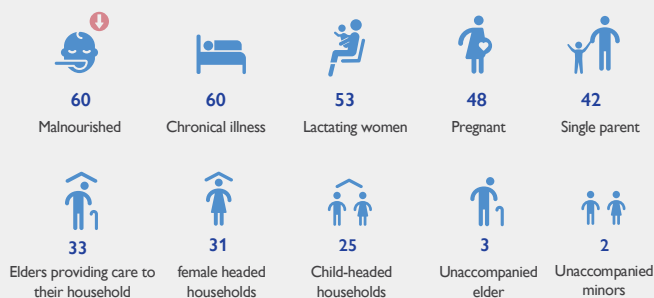
Field teams indicated that there were no deaths and that five individuals were injured. The personal belongings of all affected households were destroyed during the fire incidents. Field teams estimate that 836 of the displaced individuals are Sudanese nationals, while 45 are non-Sudanese nationals. At least 357 cases of additional vulnerabilities in need of assistance and support were identified by key informants through DTM's Protection Indicator. Additionally, DTM Sudan estimates that there are approximately 132 persons with disabilities among the IDP caseload.\* Based on a ranking scale, the three priority needs across the caseload are Emergency Shelter, Food, and Health (Medical Needs).



## Demographics



## Vulnerabilities



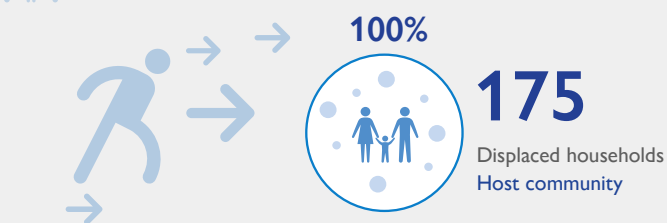
## IOM DISCLAIMER

The opinions expressed in the report are those of the authors and do not necessarily reflect the views of the International Organization for Migration (IOM). The designations employed and the presentation of material throughout the report do not imply the expression of any opinion whatsoever on the part of IOM concerning the legal status of any country, territory, city or area, or of its authorities, or concerning its frontiers or boundaries.

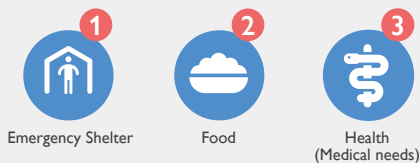
IOM is committed to the principle that humane and orderly migration benefits migrants and society. As an intergovernmental organization, IOM acts with its partners in the international community to: assist in the meeting of operational challenges of migration; advance understanding of migration issues; encourage social and economic development through migration; and uphold the human dignity and well-being of migrants.



## Shelter Indicator



## Priority Needs (Ranking scale)



## Return Intention

Data collected through the return intention indicator estimates that the entire IDP caseload (100%) intends to remain in their current locations of displacement.

\*DTM Sudan adopts the WHO global estimate that approximately 15% of the total population are persons with disabilities (PwD).