

EMERGENCY EVENT TRACKING

Data collection: 19 September 2022



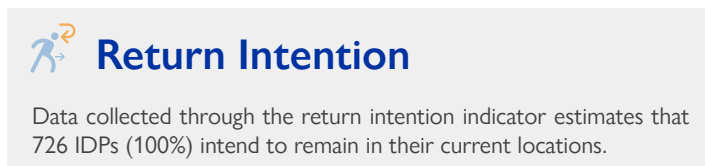
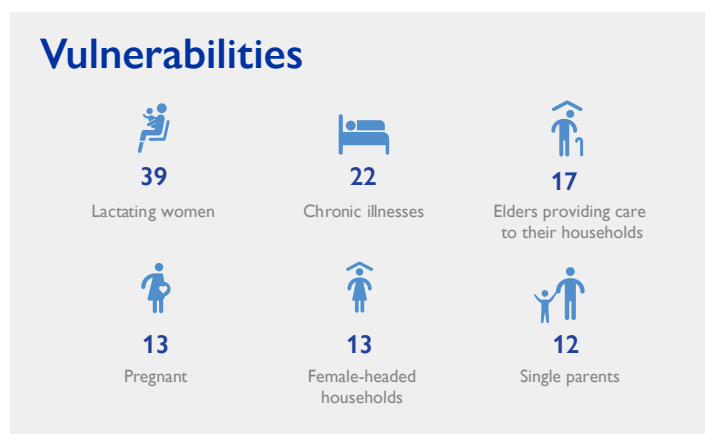
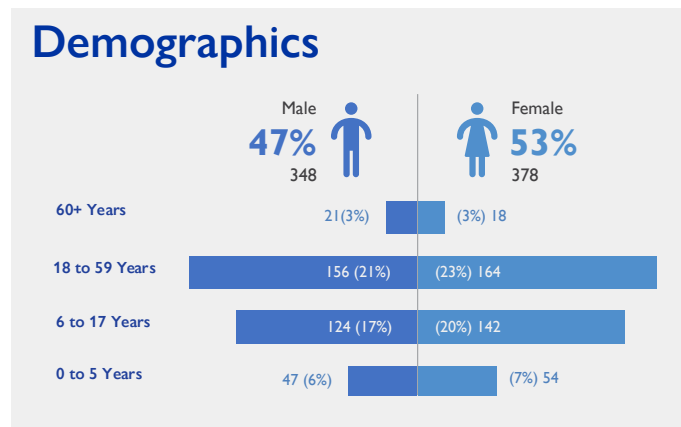
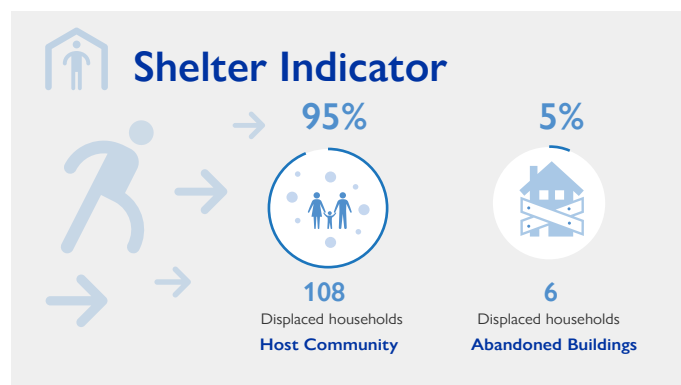
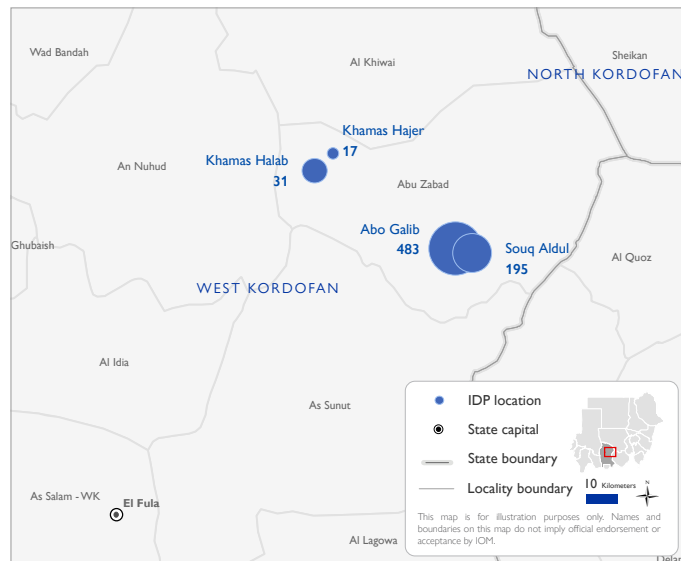
The DTM Emergency Event Tracking (EET) is deployed to track sudden displacement and population movements, provide more frequent updates on the scale of displacement, and quantify the affected population when needed. As a subcomponent of the new Mobility Tracking methodology in Sudan ([Round Four](#)), and activated on a need basis, EET utilises a broad network of key informants to capture best estimates of the affected population presence per location – a useful tool for humanitarian response planning and design.

Event Overview



DTM teams activated EET to monitor the displacement of individuals affected by inter-communal clashes between the Hamar and Misseriya tribes due to an ongoing dispute over land ownership in Abu Zabad locality in West Kordofan on 19 September 2022. The first EET update estimates that a total number of 726 individuals (114 households) are currently displaced to Abo Galib (67%), Souq Aldul (27%), Khamas Halab (4%) and Khamas Hajer (2%) in Abu Zabad locality, West Kordofan. The IDP caseload (100%) was originally displaced from Abu Zabad town (100%) in Abu Zabad locality, West Kordofan.

DTM field teams have confirmed that one individual was killed and further one sustained injury. There are at least 10 reported cases of lost goods, livestock, and/or cattle. All displaced individuals are Sudanese nationals. At least 116 cases of additional vulnerabilities in need of assistance and support were identified by key informants through DTM's Protection indicator. Additionally, DTM Sudan estimates that there are approximately 109 persons with disabilities among the IDP caseload.* Based on a ranking scale, the three priority needs across the caseload are Emergency Shelters, Food, and Non-Food Items.



IOM DISCLAIMER
The opinions expressed in the report are those of the authors and do not necessarily reflect the views of the International Organization for Migration (IOM). The designations employed and the presentation of material throughout the report do not imply the expression of any opinion whatsoever on the part of IOM concerning the legal status of any country, territory, city or area, or of its authorities, or concerning its frontiers or boundaries.

IOM is committed to the principle that humane and orderly migration benefits migrants and society. As an intergovernmental organization, IOM acts with its partners in the international community to: assist in the meeting of operational challenges of migration; advance understanding of migration issues; encourage social and economic development through migration; and uphold the human dignity and well-being of migrants.

*DTM Sudan adopts the WHO global estimate that approximately 15% of the total population are persons with disabilities (PwD).