

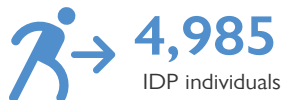
EMERGENCY EVENT TRACKING

Data collection: 3 August 2022



The DTM Emergency Event Tracking (EET) is deployed to track sudden displacement and population movements, provide more frequent updates on the scale of displacement, and quantify the affected population when needed. As a subcomponent of the new Mobility Tracking methodology in Sudan (Round Four), and activated on a need basis, EET utilises a broad network of key informants to capture best estimates of the affected population presence per location – a useful tool for humanitarian response planning and design.

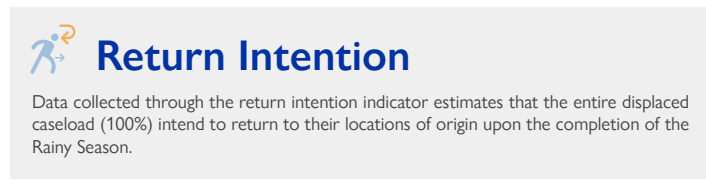
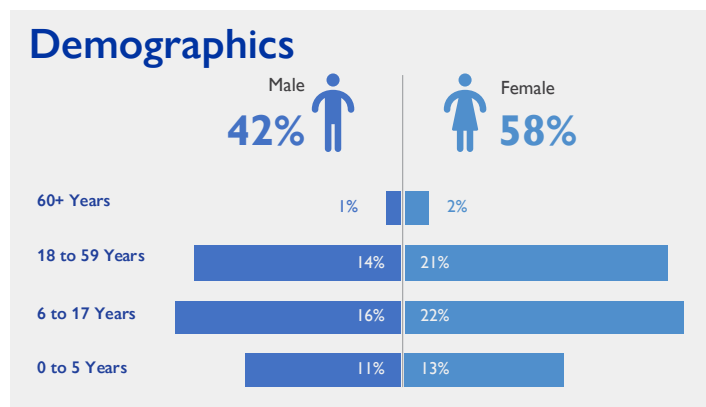
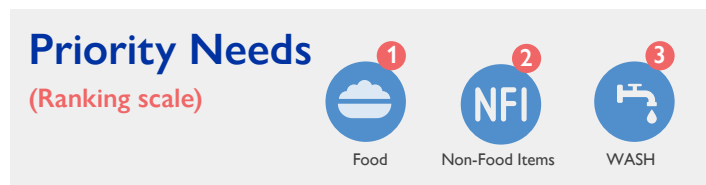
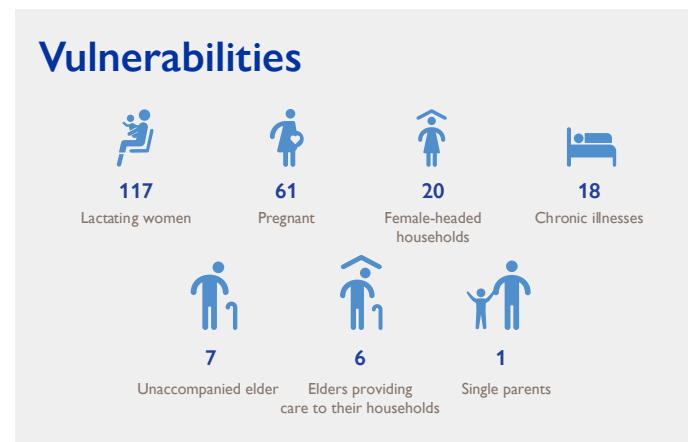
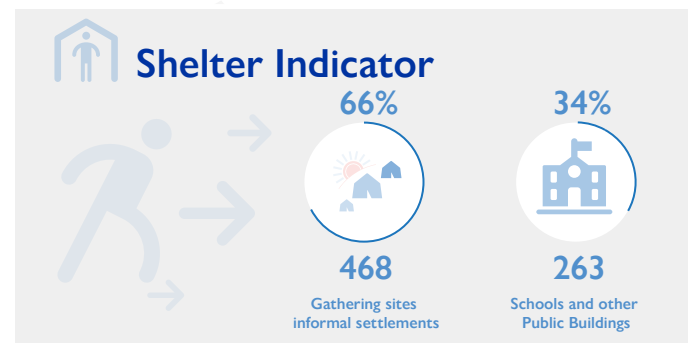
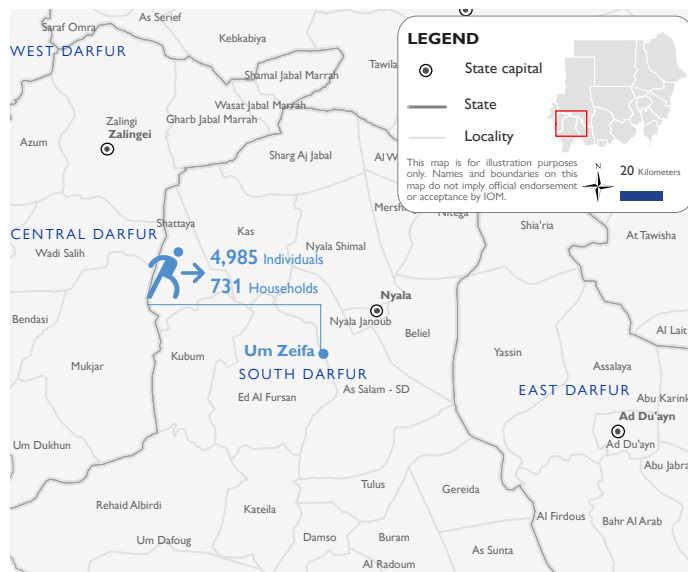
Event Overview



DTM teams activated EET to monitor the displacement of individuals affected by heavy rains and flooding in and around Um Zeifa village in Ed Al Fursan locality, South Darfur on 1 August 2022.

The first EET update estimates that a total 4,985 individuals (731 households) have been displaced from locations in Korojero (66%) and Um Zeifa (34%) villages in Ed Al Fursan, South Darfur. Field teams indicate that all affected houses in Korojero village were partially destroyed, with the IDP caseload being sheltered in a school in the village. In Um Zeifa village, all affected houses were completely destroyed, with the IDP caseload seeking shelter open area informal settlements in the area around the village.

DTM field teams have confirmed that no individuals were killed, no individuals were injured, and 731 reported cases of lost goods, livestock, and/or cattle. All displaced individuals are Sudanese nationals. At least 230 cases of additional vulnerabilities in need of assistance and support were identified by key informants through DTM's Protection indicator. Additionally, DTM Sudan estimates that there are approximately 748 persons with disabilities among the IDP caseload.* Based on a ranking scale, the three priority needs across the caseload are Food, Non-Food Items, and Water, Sanitation, and Hygiene (WASH).



IOM DISCLAIMER

The opinions expressed in the report are those of the authors and do not necessarily reflect the views of the International Organization for Migration (IOM). The designations employed and the presentation of material throughout the report do not imply the expression of any opinion whatsoever on the part of IOM concerning the legal status of any country, territory, city or area, or of its authorities, or concerning its frontiers or boundaries.

IOM is committed to the principle that humane and orderly migration benefits migrants and society. As an intergovernmental organization, IOM acts with its partners in the international community to: assist in the meeting of operational challenges of migration; advance understanding of migration issues; encourage social and economic development through migration; and uphold the human dignity and well-being of migrants.

*DTM Sudan adopts the WHO global estimate that approximately 15% of the total population are persons with disabilities (PwD).

