

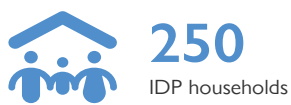
EMERGENCY EVENT TRACKING

Data collection : 23 February 2023



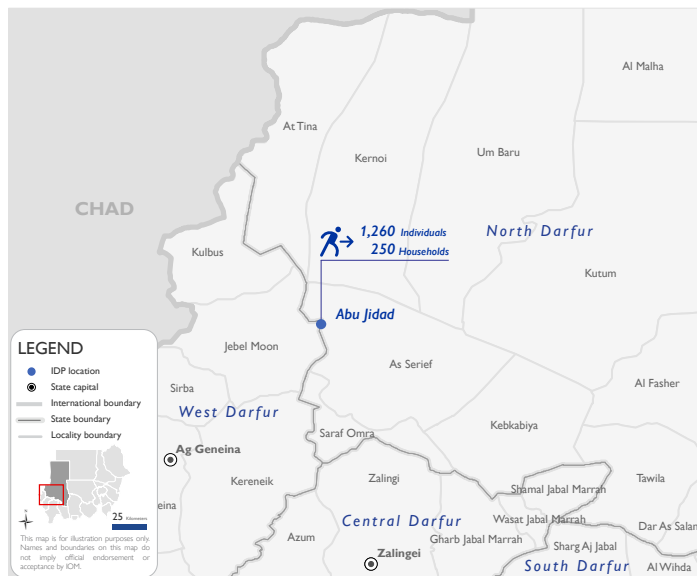
As a subcomponent of the Mobility Tracking methodology (Round Five), the Emergency Event Tracking (EET) tool is deployed to track sudden displacement, provide more frequent updates on the scale of displacement, and quantify the affected population when needed.

Event Overview

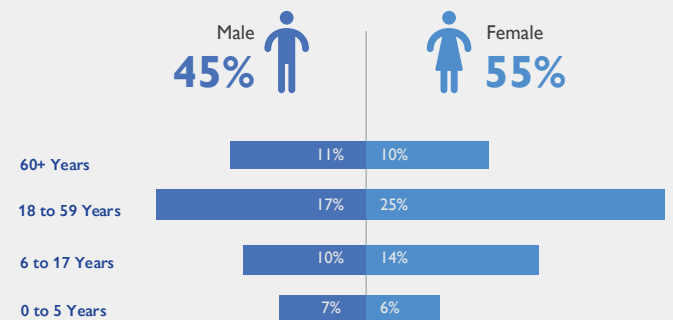


On 26 January 2023, inter-communal conflict between members of the Arab Rezeigat and Zaghawa tribes in North Darfur renewed in Abu Arad area in As Serief locality. These clashes followed recent violence in Abu Gamra village in Kernoi locality, North Darfur on 25 January 2023 over an incident of livestock theft. The first EET update estimates a total number of 1,260 individuals (250 households) are currently seeking shelter in Abu Jidad village in As Serief locality, North Darfur. The IDP caseload was originally displaced from Abu Arad village in Kernoi locality, North Darfur (44%), and Kalimo village in Kulbus locality, West Darfur (56%). Field teams indicate that delays in data collection occurred due to access and communication restraints following the deterioration of the security situation across the area.

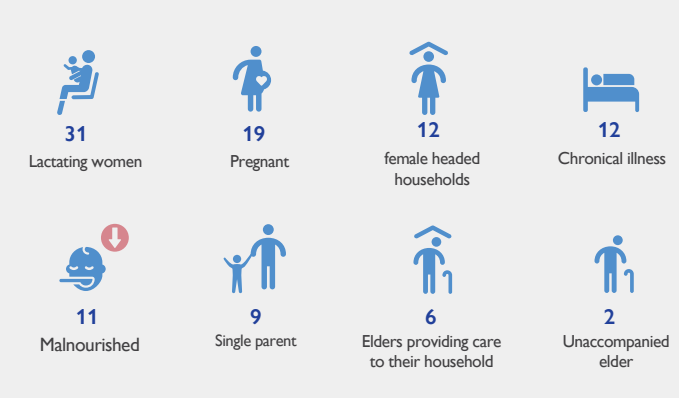
Field teams estimate, in triangulation with additional sources, that there were three deaths, five injuries, and 12 cases of reported lost goods, cattle, and/or livestock. All displaced individuals are Sudanese nationals. At least 102 cases of additional vulnerabilities in need of assistance and support were identified by key informants through DTM's Protection indicator. Additionally, DTM Sudan estimates that there are approximately 189 persons with disabilities among the IDP caseload.* Based on a ranking scale, the three priority needs across the caseload are Food, Water, Sanitation, and Hygiene (WASH), and Non-Food Items.



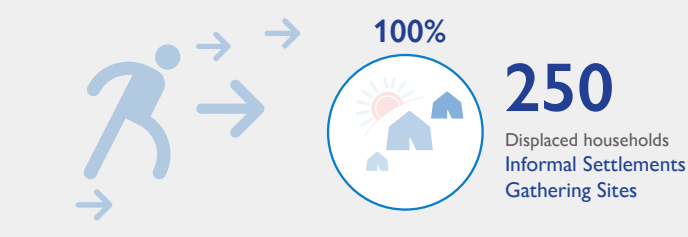
Demographics



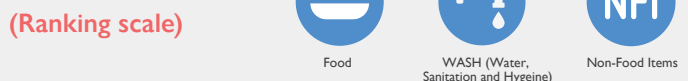
Vulnerabilities



Shelter Indicator



Priority Needs (Ranking scale)



Return Intention

Data collected through the return intention indicator estimates that the entire IDP caseload (100%) intends to return to their locations of origin upon the improvement of the security situation.

IOM DISCLAIMER

The opinions expressed in the report are those of the authors and do not necessarily reflect the views of the International Organization for Migration (IOM). The designations employed and the presentation of material throughout the report do not imply the expression of any opinion whatsoever on the part of IOM concerning the legal status of any country, territory, city or area, or of its authorities, or concerning its frontiers or boundaries.

IOM is committed to the principle that humane and orderly migration benefits migrants and society. As an intergovernmental organization, IOM acts with its partners in the international community to: assist in the meeting of operational challenges of migration; advance understanding of migration issues; encourage social and economic development through migration; and uphold the human dignity and well-being of migrants.

*DTM Sudan adopts the WHO global estimate that approximately 15% of the total population are persons with disabilities (PwD).