

EMERGENCY EVENT TRACKING

Data collection: 14 November 2022

Flooding



As a subcomponent of the Mobility Tracking methodology (Round Four), the Emergency Event Tracking (EET) tool is deployed to track sudden displacement, provide more frequent updates on the scale of displacement, and quantify the affected population when needed.

## Event Overview



**4,314**  
IDP individuals

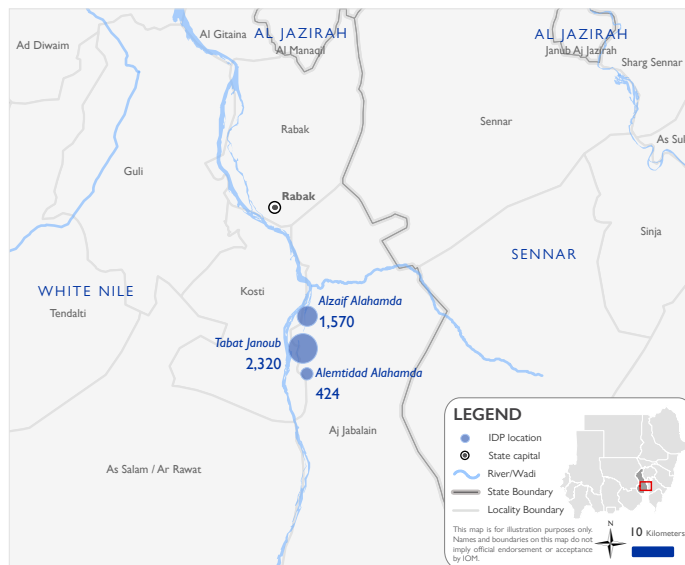


**844**  
IDP households

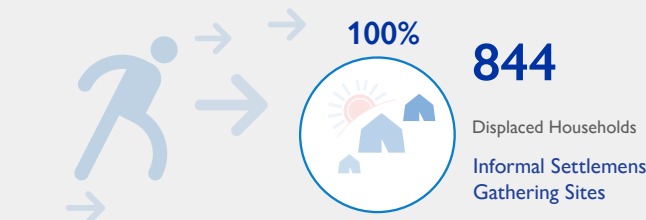
DTM teams activated EET to monitor the displacement of individuals affected by flooding in Aj Jabalain (Albarasha and Shenibo), White Nile on 30 October 2022. For more information, please see [EET Aj Jabalain \(Albarasha and Shenibo\), White Nile \(Update 001\)](#). Additional locations, not previously accessible, were visited during the second round of the data collection on 14 November 2022.

On 30 October 2022, the villages of Albarasha and Shenibo of Al-Jazeera Musran in Aj Jabalain locality, White Nile state, were flooded due to an increase in the White Nile River's water level following operations at the dam in Jebel Awlia locality, Khartoum. The second EET update estimates a total number of 4,314 IDP individuals (844 households) currently seeking shelter in Tabat Janoub (54%), Alzaif Alahamda (36%), and Alemtidad Alahamda (10%) in Aj Jabalain locality, White Nile. The IDP caseload was originally displaced from the villages of Shenibo (54%), Albarasha (36%), and Zahrat Elnile village (10%) in Aj Jabalain locality, White Nile.

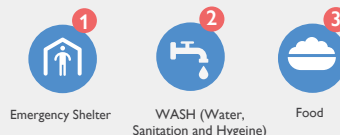
Field teams estimate, upon triangulation with additional sources, that no individuals were killed, and three individuals sustained injuries. There are no reported cases of lost goods, cattle, and/or livestock. All displaced individuals are Sudanese nationals. At least 437 cases of additional vulnerabilities in need of assistance and support were identified by key informants through DTM's Protection indicator. Additionally, DTM Sudan estimates that there are approximately 647 persons with disabilities among the IDP caseload.\* Based on a ranking scale, the three priority needs across the caseload are Emergency Shelter, Water, Sanitation, and Hygiene (WASH), and Food.



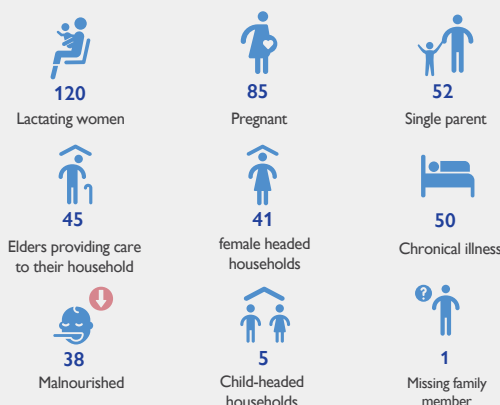
## Shelter Indicator



## Priority Needs (Ranking scale)



## Vulnerabilities

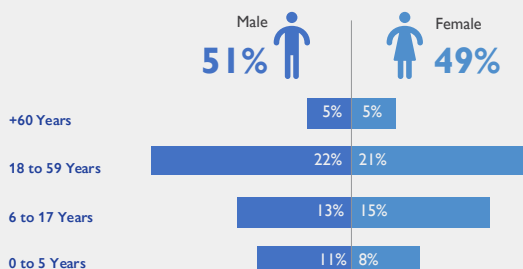


### IOM DISCLAIMER

The opinions expressed in the report are those of the authors and do not necessarily reflect the views of the International Organization for Migration (IOM). The designations employed and the presentation of material throughout the report do not imply the expression of any opinion whatsoever on the part of IOM concerning the legal status of any country, territory, city or area, or of its authorities, or concerning its frontiers or boundaries.

IOM is committed to the principle that humane and orderly migration benefits migrants and society. As an intergovernmental organization, IOM acts with its partners in the international community to: assist in the meeting of operational challenges of migration; advance understanding of migration issues; encourage social and economic development through migration; and uphold the human dignity and well-being of migrants.

## Demographics



## Return Intention

Data collected through the return intention indicator estimates that the entire IDP caseload (100%) intends to remain in their locations of displacement once the flooding subsides.



\*DTM Sudan adopts the WHO global estimate that approximately 15% of the total population are persons with disabilities (PwD).