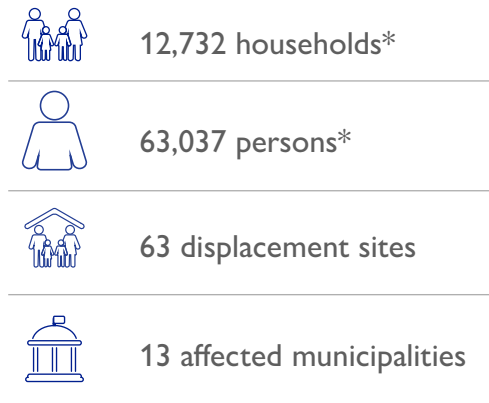
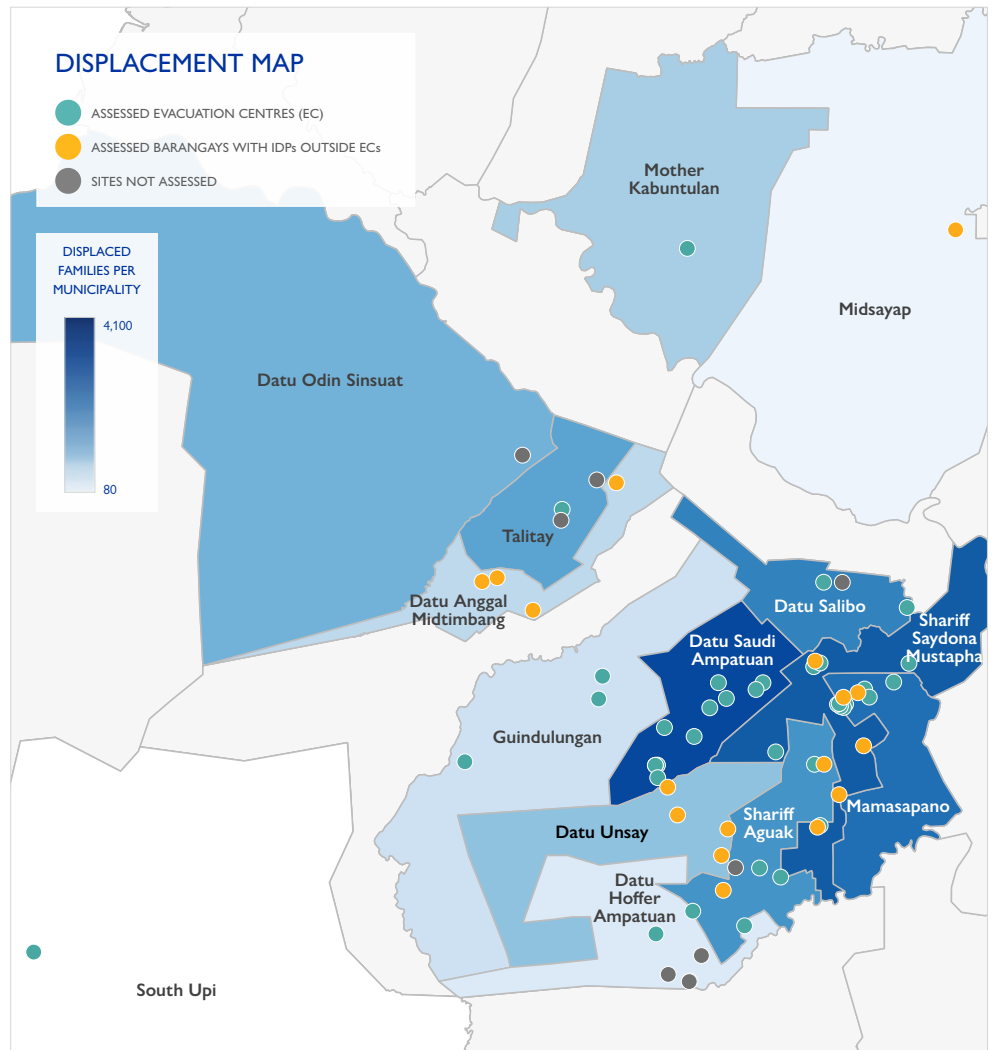


### DISPLACEMENT SNAPSHOT as of 6 April 2021



\* Household numbers are based on IOM's key informant interviews at the site level with IDP leaders and barangay local government units. Numbers will be updated and verified once the Ministry of Social Services and Development's household-level data becomes available.



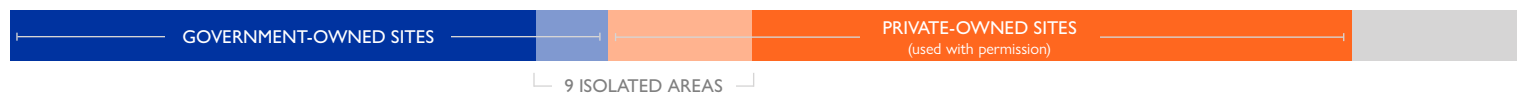
### BACKGROUND

Armed conflict erupted on 18 March 2021, between the Armed Forces of the Philippines and the Bangsamoro Islamic Freedom Fighters. The firefighting and mortar shelling displaced thousands of families from 12 municipalities in Maguindanao and 1 municipality in North Cotabato, including indigenous people of the Teduray and Maguindanaon groups.

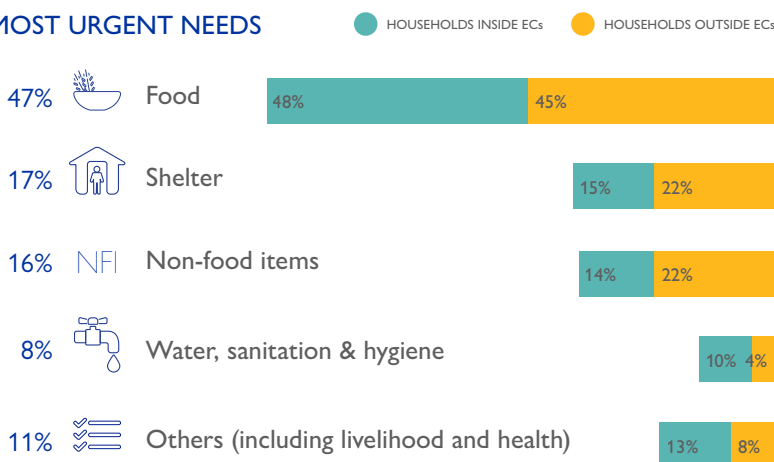
### SITE CLASSIFICATION



### SITE OWNERSHIP



### MOST URGENT NEEDS



### AVERAGE NUMBER OF HOUSEHOLDS PER SHELTER

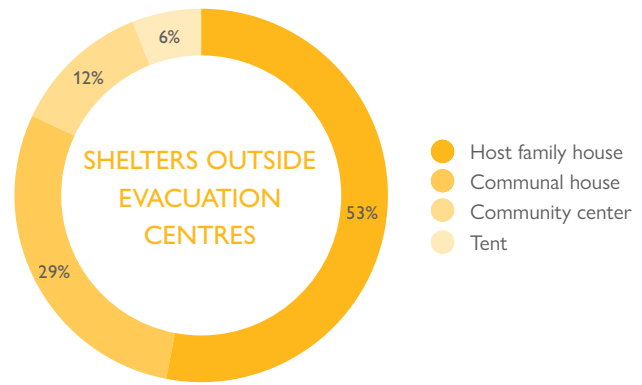
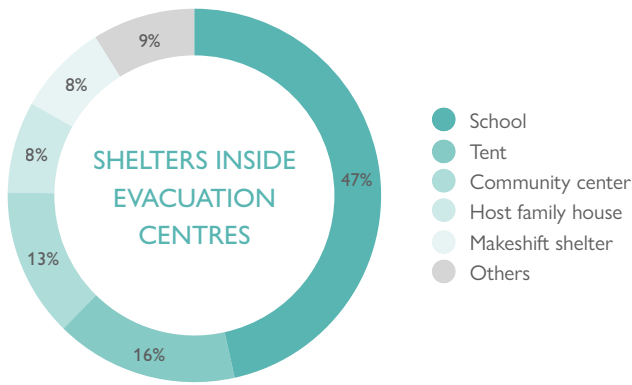
10 HOUSEHOLDS PER SHELTER INSIDE EVACUATION CENTRES



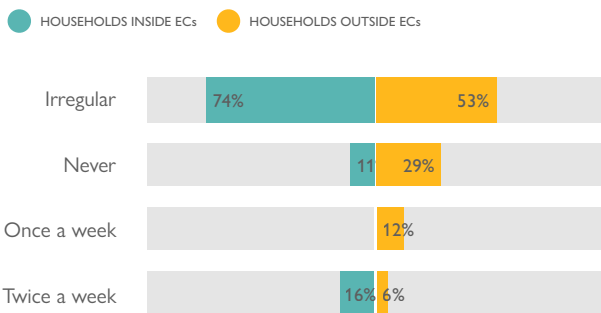
4 HOUSEHOLDS PER SHELTER OUTSIDE EVACUATION CENTRES



## TYPE OF SHELTER



## FOOD DISTRIBUTION BY SITE TYPE



## HANDWASHING STATIONS



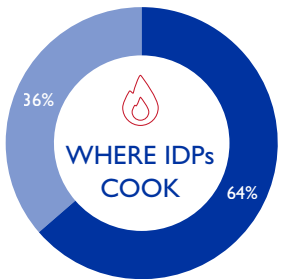
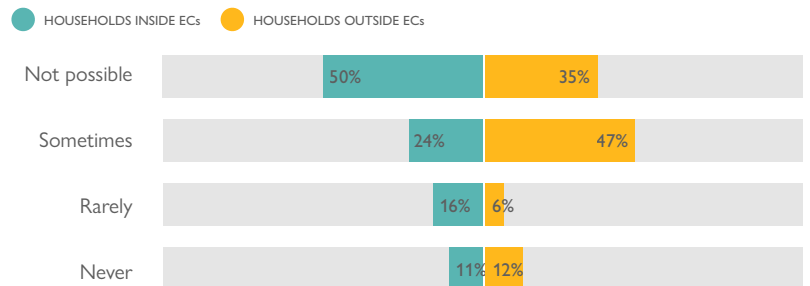
## PERCENT OF IDPS WHO WEAR MASKS

In **33%** of sites, IDPs do not wear masks at all

In **4%** of sites, IDPs wear masks all the time

In **47%** of sites, only 25% of IDPs wear masks

## PHYSICAL DISTANCING IS PRACTICED IN THE SITE



- In open space
- Inside or adjacent to shelter

The lack of proper cooking counters poses a safety risk to IDPs.



## LATRINES & BATHING AREAS ARE NOT AVAILABLE IN...

67% of sites for male latrines

65% of sites for female latrines

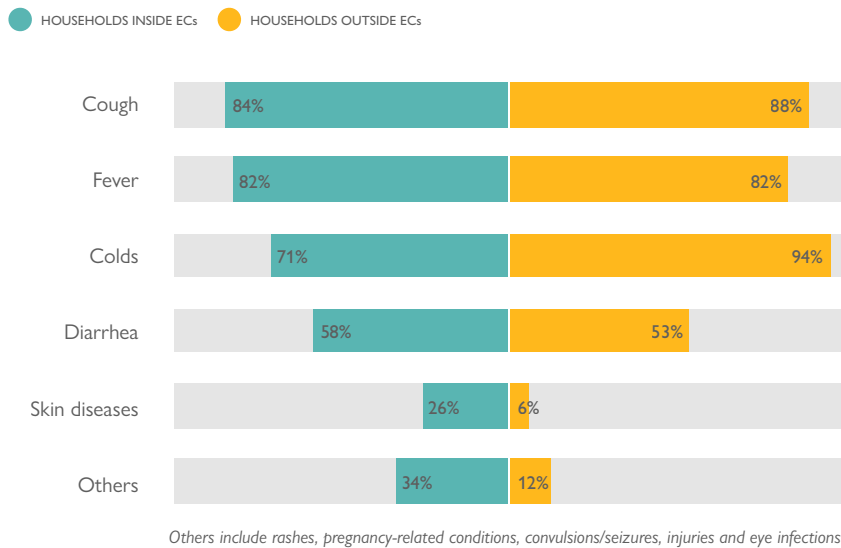
78% of sites for male bathing areas

76% of sites for female bathing areas

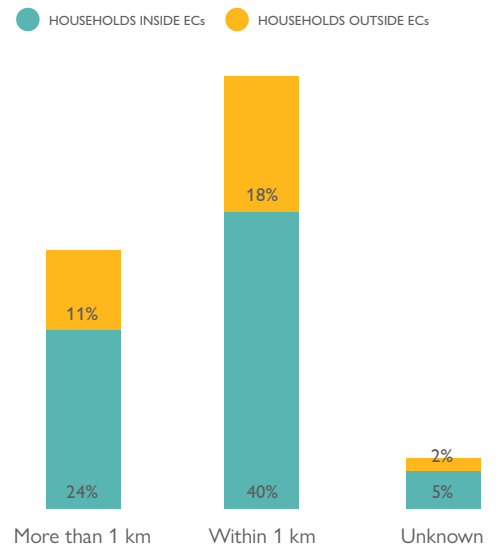
**53%**  
of sites have unsegregated latrines

**27%**  
of sites have unsegregated bathing areas

## PERCENT OF SITES WITH REPORTED HEALTH PROBLEMS



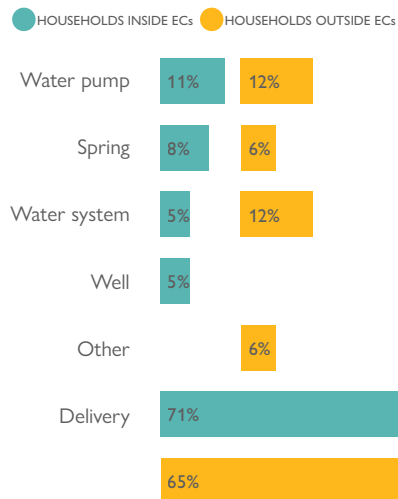
## DISTANCE TO NEAREST HEALTH FACILITY



## SUPPLEMENTAL FEEDING FOR PREGNANT AND LACTATING WOMEN, AND CHILDREN

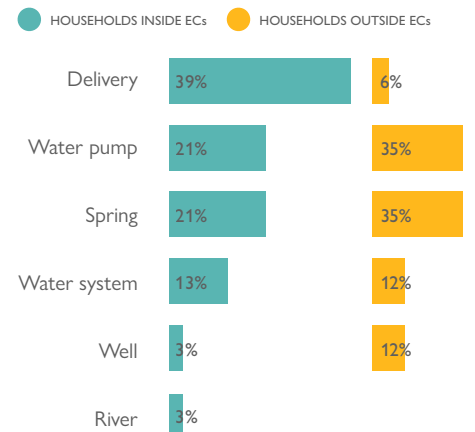


## POTABLE WATER SOURCE

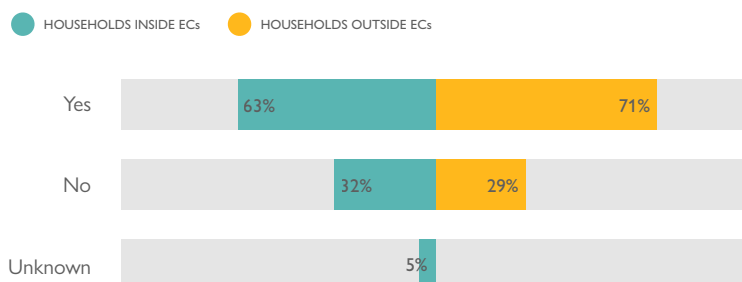


*IDPs get water from water pumps for both drinking and domestic use.*

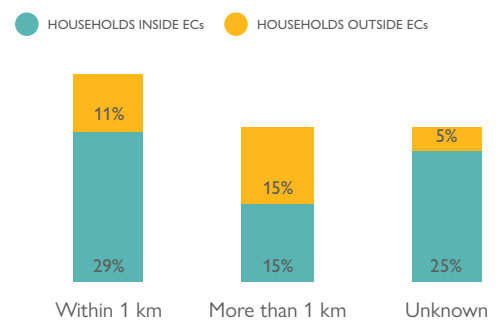
## SOURCE OF WATER FOR DOMESTIC USE



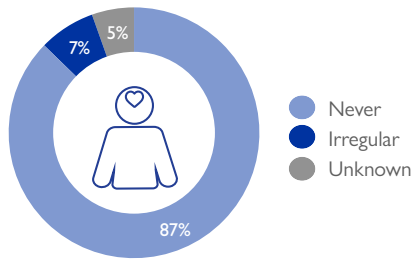
## ACCESS TO FORMAL/INFORMAL EDUCATION



## DISTANCE TO NEAREST EDUCATION FACILITY

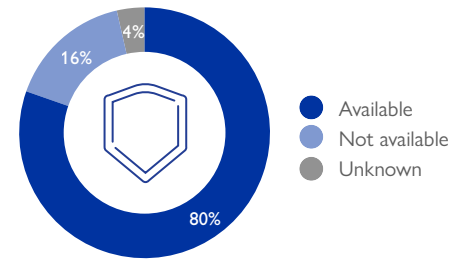


## FREQUENCY OF MENTAL HEALTH AND PSYCHOSOCIAL SUPPORT

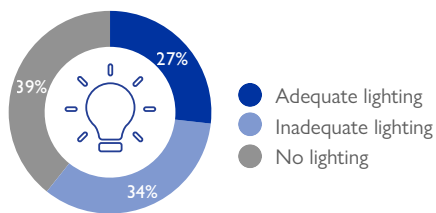


Economic activities such as mat weaving provide IDPs with temporary psychosocial support.

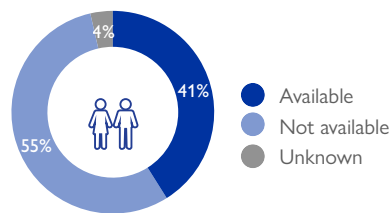
## AVAILABILITY OF SECURITY



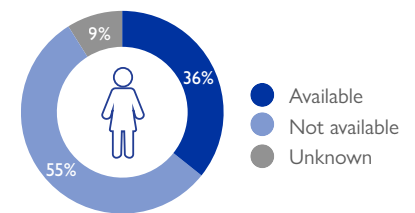
## AVAILABILITY OF ADEQUATE LIGHTING



## CHILD-FRIENDLY SPACES IN SITES



## WOMEN-FRIENDLY SPACES IN SITES



## LIST OF OPEN DISPLACEMENT SITES

• ASSESSED SITES

PROVINCE	MUNICIPALITY	BARANGAY	NAME OF SITE	HOUSEHOLDS	PERSONS*
Maguindanao	Datu Anggal Midtimbang	Adaon	Barangay Adaon (Home-based)	56	280
Maguindanao	Datu Anggal Midtimbang	Mapayag	Barangay Mapayag (Home-based)	87	435
Maguindanao	Datu Anggal Midtimbang	Midtimbang	Barangay Midtimbang (Home-based)	17	85
Maguindanao	Datu Anggal Midtimbang	Tugal	Barangay Tugal (Home-based)	62	310
Maguindanao	Datu Hoffer Ampatuan	Limpongo	Limpongo Evacuation Site (near barangay hall)	66	330
Maguindanao	Datu Hoffer Ampatuan	Taib	Barangay Taib Evacuation Site, African Oil Ground	105	525
Maguindanao	Datu Hoffer Ampatuan	Tuayan	Tuayan Mother Day Care Evacuation Center	136	680
Maguindanao	Datu Hoffer Ampatuan	Tuayan Mother	Datu Aliman Elementary School	60	300
Maguindanao	Datu Hoffer Ampatuan	Tuayan Mother	Housing Center Project Evacuation Center	60	300
Maguindanao	Datu Hoffer Ampatuan	Tuayan Mother	Tuayan Mother Multi-purpose Evacuation Center	3	15
Maguindanao	Datu Odin Sinsuat	Kakar	Sitio Proper Evacuation Center	544	2,720
Maguindanao	Datu Salibo	Butilen	Barangay Hall of Butilen Evacuation Center	42	210
Maguindanao	Datu Salibo	Pagatin	Maahad Pagatin Evacuation Center	83	415
Maguindanao	Datu Salibo	Penditen	Barangay Hall of Penditen Evacuation Center	69	345
Maguindanao	Datu Salibo	Poblacion	Municipal Covered Court	16	80
Maguindanao	Datu Saudi Ampatuan	Dapiawan	Dapiawan Elementary School Evacuation Center	275	1,375
Maguindanao	Datu Saudi Ampatuan	Kabengi	Sitio Mala Evacuation Center	236	1,180
Maguindanao	Datu Saudi Ampatuan	Kitango	Kitango Elementary School	145	725
Maguindanao	Datu Saudi Ampatuan	Kitango	Madrasa Rahman Evacuation Center	276	1,380
Maguindanao	Datu Saudi Ampatuan	Kitango	Madrasah Darussalam	183	915
Maguindanao	Datu Saudi Ampatuan	Kitango	Sitio Udsudan ES - Landing Fish	125	625
Maguindanao	Datu Saudi Ampatuan	Lower Salbu	Madrasa Lower Salbu Evacuation Center	670	3,350
Maguindanao	Datu Saudi Ampatuan	Madia	Maahad Madia Evacuation Center	314	1,570
Maguindanao	Datu Saudi Ampatuan	Salbu	Datu Pendililang Piang Elementary School	463	2,315

\* As profiling of IDPs is ongoing, the number of persons in assessed sites is calculated by multiplying the number of households by 5, the national average number of family members. This does not include Tuayan Mother Day Care Evacuation Center in Tuayan, Datu Hoffer Ampatuan and Madrasa Rahman Evacuation Center in Kitango, Datu Saudi Ampatuan which have sex disaggregated data and complete IDP registration, respectively.

PROVINCE	MUNICIPALITY	BARANGAY	NAME OF SITE	HOUSEHOLDS	PERSONS	
Maguindanao	Datu Saudi Ampatuan	Salbu	Madrasa Near Barangay Hall Evacuation Center	436	2,180	•
Maguindanao	Datu Saudi Ampatuan	Salbu	Municipal Gymnasium Evacuation Center	61	305	•
Maguindanao	Datu Saudi Ampatuan	Salbu	Sitio Market Site Evacuation Center	336	1,680	•
Maguindanao	Datu Unsay	Iganampong	Iganampong Elementary School Evacuation Center	92	460	•
Maguindanao	Datu Unsay	Maitumaig	Home-based Maitumaig	67	335	•
Maguindanao	Datu Unsay	Meta	Home-based Sitio Irregation	86	430	•
Maguindanao	Datu Unsay	Meta	Home-based Sitio Tela	80	400	•
Maguindanao	Guindulungan	Ahan	Sitio Maringen Home-based	334	1,670	•
Maguindanao	Guindulungan	Bagan	Bagan Elementary School Evacuation Center	34	170	•
Maguindanao	Mamasapano	Bagumbong	Home-based in Bagumbong	461	2,305	•
Maguindanao	Mamasapano	Bagumbong	Sitio Mapangal Bagumbong	368	1,840	•
Maguindanao	Mamasapano	Libutan	Home-based Libutan Proper	385	1,925	•
Maguindanao	Mamasapano	Libutan	Home-based in Proper Libutan (Back of Maahad Libutan)	153	765	•
Maguindanao	Mamasapano	Libutan	Libutan Elementary School Evacuation Center	282	1,410	•
Maguindanao	Mamasapano	Libutan	Libutan Proper	650	3,250	•
Maguindanao	Mamasapano	Proper Libutan	Datu Tahir National High School Evacuation Center	250	1,250	•
Maguindanao	Mamasapano	Proper Libutan	Maahad Libutan Evacuation Center	181	905	•
Maguindanao	Mother Kabuntalan	Butiren	Barangay Butiren Evacuation Site	358	1,790	•
Maguindanao	Shariff Aguak	Bialong	Covered Court Evacuation Center	150	750	•
Maguindanao	Shariff Aguak	Bialong	Sitio Proper SA Evacuation Center	270	1,350	•
Maguindanao	Shariff Aguak	Kuloy	Sitio Mista Barangay Kuloy Evacuation Center	547	2,735	•
Maguindanao	Shariff Aguak	Satan	Sitio Dimalibi Barangay Satan Evacuation Center	54	270	•
Maguindanao	Shariff Aguak	Satan	Sitio Lining Barangay Satan Evacuation Center	90	450	•
Maguindanao	Shariff Aguak	Tapikan	Tapikan Primary School Evacuation Center	9	45	•
Maguindanao	Shariff Saydona	Bakal	Datu Bakal SSM Evacuation Center	135	675	•
Maguindanao	Shariff Saydona	Datu Kilay	Datu Kilay SSM Evacuation Center	179	895	•
Maguindanao	Shariff Saydona	Duguengen	Barangay Duguengen Evacuation Center	150	750	•
Maguindanao	Shariff Saydona	East Libutan	Sitio Mangandingan Evacuation Center	270	1,350	•
Maguindanao	Shariff Saydona	Inaladan	Inaladan SSM Evacuation Center	185	925	•
Maguindanao	Shariff Saydona	Linantangan	Mahad Linantangan Evacuation Center	777	3,885	•
Maguindanao	Shariff Saydona	Pagatin 1	Pagatin Hi-way Evacuation Center	371	1,855	•
Maguindanao	Shariff Saydona	Pagatin 2	Pagatin Elementary School Evacuation Center	350	1,750	•
Maguindanao	Shariff Saydona	Pamalian	Pamalian Evacuation Center	290	1,450	•
Maguindanao	Shariff Saydona	Pikeg	Pikeg SSM Evacuation Center	380	1,900	•
Maguindanao	South Upi	Pilar	Home-based Poblacion Barangay Pilar	86	430	•
Maguindanao	Talitay	Gadungan	Sitio Kuden (home-based)	18	90	•
Maguindanao	Talitay	Kiladap	Sitio Mapandala	110	550	•
Maguindanao	Talitay	Poblacion	Talitay Central Elementary School Evacuation Center	313	1,565	•
North Cotabato	Midsayap	Kadikasan	Madrasah Evacuation Center	139	695	•

## METHODOLOGY

This DTM rapid needs assessment was conducted from 1-6 April 2021, to better understand the needs of IDPs displaced by the conflict in Maguindanao — viewed with a COVID-19 pandemic lens. Data in this report is from key informant interviews and site assessments by IOM staff. The key informants are barangay local government representatives and IDP leaders who were interviewed onsite. IOM assessed 56 sites out of the 63 total displacements sites in Maguindanao and North Cotabato.



For more information, contact IOM Philippines:

**Kristin Dadey**  
Chief of Mission  
IOM Philippines  
[kdadey@iom.int](mailto:kdadey@iom.int)

**Hwahyun Kim**  
Head of Sub-Office  
IOM Mindanao  
[hwakim@iom.int](mailto:hwakim@iom.int)