

DISPLACEMENT TRACKING MATRIX (DTM) SOMALI REGION, ETHIOPIA  
ROUND 8: NOVEMBER – DECEMBER 2017

*Summary of key findings*

DATE OF PUBLICATION: 5 FEB 2017



Photo: Dolo Ado, Somali Region  
Rikka Tupaz/UN Migration Agency (IOM)



### SOMALI REGION - KEY FINDINGS

#### LOCATION AND CAUSE OF DISPLACEMENT:

806,913 displaced individuals comprising 118,719 households in 331 displacement sites were identified in Somali region\*. These figures represent an increase of 123,692 in the total individuals (18%), households (11%) and sites (4%) since round 7 (August/September 2017). 68% sites opened in 2017. Conflict was the primary cause of displacement for an estimated 57% of the displaced population.

**DEMOGRAPHICS:** 52% of displaced individuals were female and 48% were male. 58% were younger than 18 years old. 9% were over 60 years old.

**SHELTER:** 134 (40%) sites reported that over 50% of households were living in shelters that were below standard.

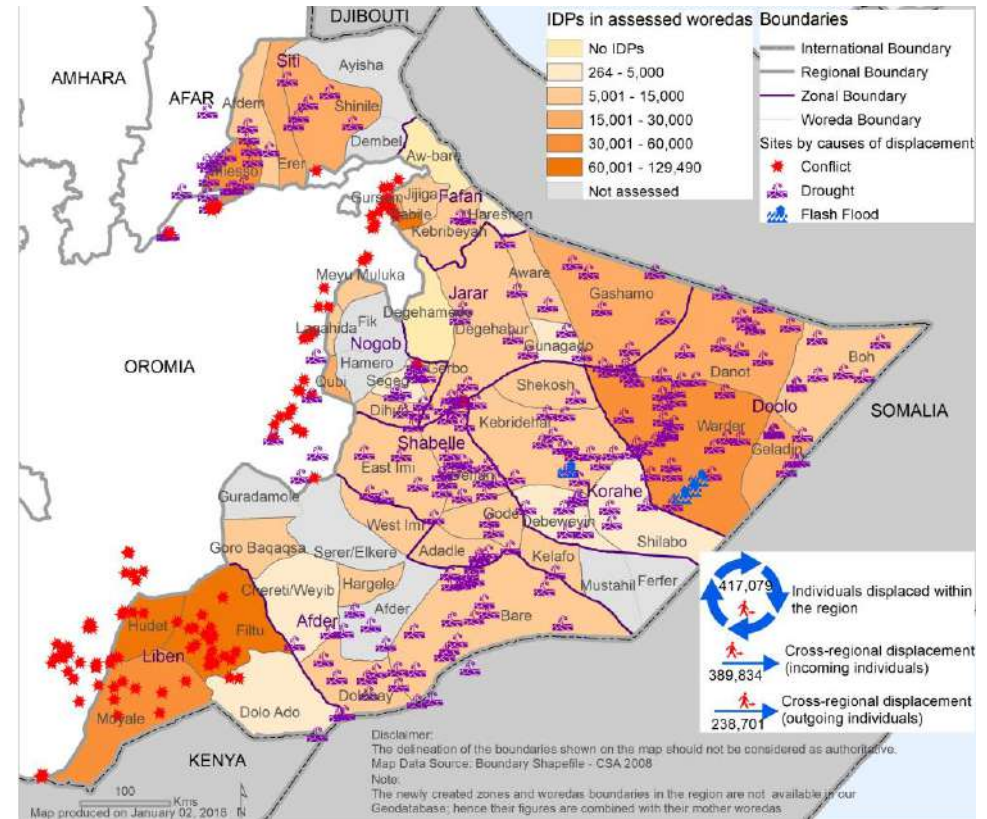
**WASH:** Only 18 sites meet SPHERE standards of access to over 15 liters of water per person per day. 276 (83%) displacement sites reported having no toilets.

**FOOD, NUTRITION AND LIVELIHOODS:** 29 (9%) sites, representing 117,047 individuals, reported no access to food. 88% of sites reported that IDPs did not have access to income generating activities

**HEALTH:** Malaria was the primary health concern in this round of data collection with 148 sites reporting this.

**EDUCATION:** In 42% of sites (139) less than 50% of children are attending school. Formal primary school education is available at 65% (216) of sites. Alternative basic education (ABE) is available at 39% (128) sites.

\* 15 sites were inaccessible during round 8 data collection. Data from earlier assessments has been combined with round 8 data to provide the last known status of these inaccessible sites.



**PROTECTION:** Harmful traditional practices were reported across many sites. These practices included: female genital mutilation and child marriage.

**COMMUNICATION:** 42% of sites reported that the site managers were IDPs primary source of information followed by local leaders (27%) and Authorities (20%).

### LOCATION, ORIGIN AND CAUSE OF DISPLACEMENT

- Of the total IDP population identified in Somali region (806,913 individuals) 51% (408,933) IDPs were displaced in 2017. The remaining 49% were displaced prior to 2017.
- 68% of all sites identified opened between January and December 2017. 5% opened during 2016 and 27% opened before 2016.
- Figure 1 shows the estimated number of IDPs by assessment round and cause of displacement. Figure 2 shows the number of IDPs displaced by zone and cause of displacement.

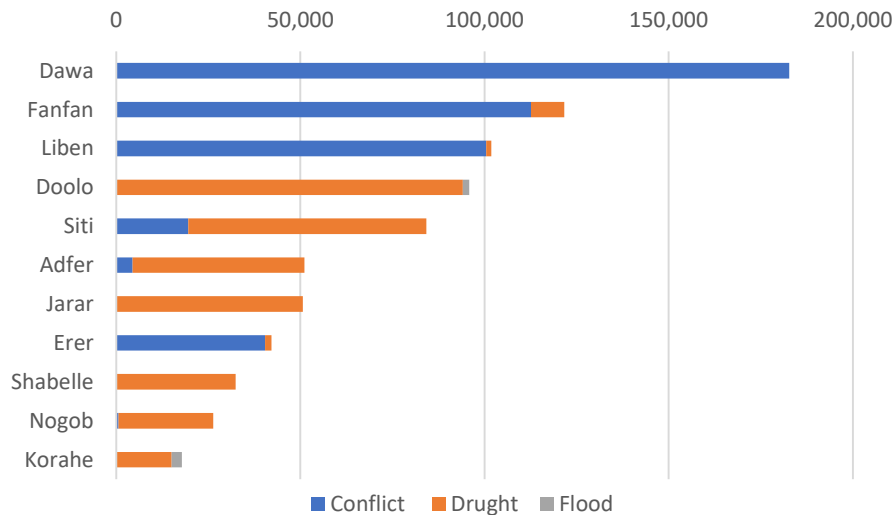


Figure 2: Estimated IDPs displaced by zone and cause of displacement

displacement. Figure 3 shows the drivers of displacement disaggregated by the number of IDPs in sites reporting new arrivals in 2017.

- 51% of IDPs in Somali region are internally displaced within the region, while 47% are displaced from Oromia region and the remaining 2% are displaced from other regions.
- Of the IDPs displaced within Somali region, 86% were displaced within their zone of origin.

- Only 12 sites (4%) reported that IDPs had been previously displaced.

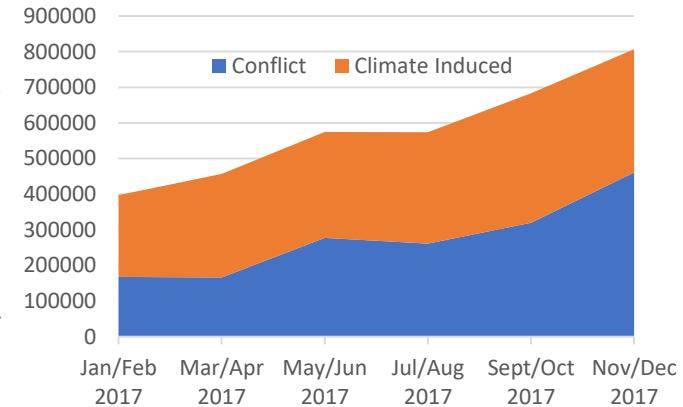


Figure 1: Estimated IDPs in identified sites by assessment round and cause of displacement

Drivers	Total Recorded Population	Percentage of Total Population	Population in Sites Reporting New Arrivals in 2017, Where Sites Opened in 2017.	Percentage of Total Population	Population in Sites Reporting New Arrivals in 2017, Where Sites Opened Before 2017	Percentage of Total Population
Conflict	460,888	57%	136,268	17%	261,003	32%
Drought	341,425	42%	267,792	33%	10,509	1%
Flood	4,600	1%	4,600	0.6%	-	-

Figure 3: Distribution of IDPs by drivers of displacement, total recorded population and population in sites reporting new arrivals in 2017



# DISPLACEMENT TRACKING MATRIX (DTM) SOMALI REGION

ROUND 8: NOVEMBER - DECEMBER 2017

- IDPs from 20 (6%) sites were leaving the site. Of these, IDPs from 18 sites were going to the nearest village. IDPs from 1 sites were going to their place of origin and from 1 site IDPs intended to stay close to the displacement site.
- At 18% of sites IDPs foresaw a resolution to their displacement, while IDPs at 40% of sites did not. At the remaining 42% of sites key informants either did not know, or were not asked the question in a previous round.
- At 99% of sites IDPs prefer reintegration as a durable solution to their displacement. IDPs at two sites respectively prefer relocation and return to their place of origin.
- Figure 3 shows the percentage of sites reporting various obstacles to returns, while figure 4 shows support IDPs need to return or reintegrate.

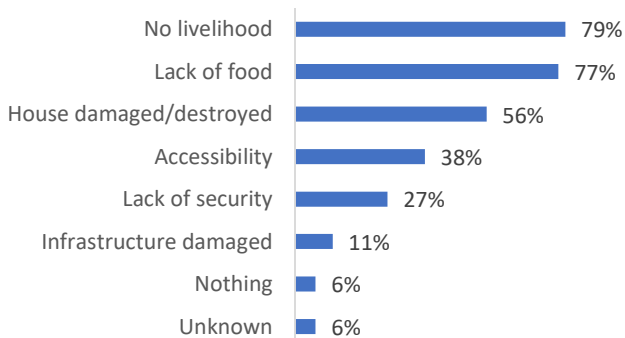


Figure 3: % of sites reporting obstacles to return

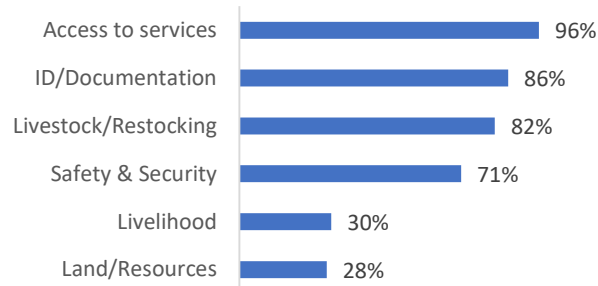


Figure 4: % of sites by support needed for return or reintegration

## POPULATION DEMOGRAPHICS

- Of the 806,913 displaced individuals identified in Somali region, 52% were female and 48% were male. 63% were younger than 18 years old. 9% were over 60 years old (figure 5). Individuals with specific vulnerabilities were also reported at displacement sites and are represented in figure 6.

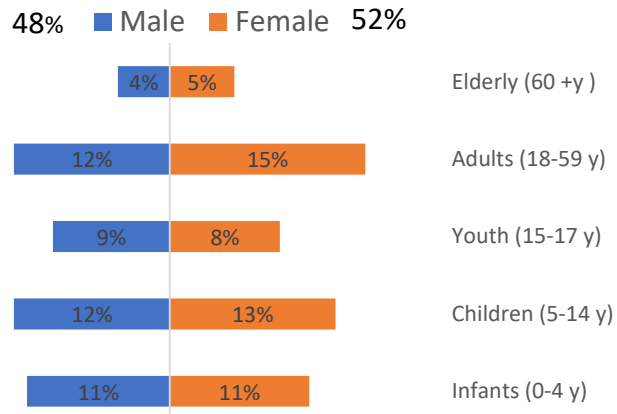


Figure 5: Gender and age distribution

Special vulnerabilities	# Individuals
Pregnant girls under 18	896
Pregnant women over 18	11,027
Breastfeeding mothers	15,954
Persons with disabilities under 18	1,700
Persons with disabilities over 18	1,873
Persons with chronic diseases	1,031
Members of religious minorities	4
Members of ethnic minorities	11
Elderly persons without caregivers	2,723
Unaccompanied children	892
Separated children	1,424
Orphaned children	2,809
Single female headed households	4,843
Single male headed households	2,813
Single child headed households	1,197
Elderly headed households	3,884

Figure 6: Individuals with specific vulnerabilities among IDP population



# DISPLACEMENT TRACKING MATRIX (DTM) SOMALI REGION

ROUND 8: NOVEMBER - DECEMBER 2017

## CAUSE OF DISPLACEMENT BY ZONE AND WOREDA IN ROUND 7 AND 8

Increase in IDP numbers from previous round of assessment ■  
 Decrease in IDP numbers from previous round of assessment ■  
 No change from previous round of assessment ■  
 New site or uncovered site ■

Zone	Woreda	Displacement Reason	Round 8			% change in estimated # of HHs	Round 7		
			HHs	Individuals	Sites		HHs	Individuals	Sites
Afder	Bare	Drought	2,342	12,539	9	+55.72%	1,504	9,077	8
Afder	Chereti/Weyib	Drought	841	4,944	2	-1.06%	850	5,092	2
Afder	Dolobay	Drought	2,154	11,003	4	-2.97%	2,220	13,128	4
Afder	God God	Drought	922	5,212	4	+9.11%	845	6,221	4
Afder	Hargele	Drought	787	4,410	3	+76.46%	446	3,013	3
Afder	Qoohle	Drought	1,373	7,575	3	+2.08%	1,345	8,211	3
Afder	Raso	Conflict	732	4,429	1	+68.66%	434	2,722	4
Afder	Raso	Drought	171	1,012	2	-22.27%	220	1,429	2
<b>Afder Total</b>			<b>9,322</b>	<b>51,124</b>	<b>28</b>	<b>+18.54%</b>	<b>7,864</b>	<b>48,893</b>	<b>30</b>
Dawa	Hudet	Conflict	14,536	129,490	21	+12.77%	12,890	80,967	19



# DISPLACEMENT TRACKING MATRIX (DTM) SOMALI REGION

ROUND 8: NOVEMBER - DECEMBER 2017

## CAUSE OF DISPLACEMENT BY ZONE AND WOREDA IN ROUND 7 AND 8

Increase in IDP numbers from previous round of assessment ■  
 Decrease in IDP numbers from previous round of assessment ■  
 No change from previous round of assessment ■  
 New site or uncovered site ■

Zone	Woreda	Displacement Reason	Round 8			% change in estimated # of HHs	Round 7		
			HHs	Individuals	Sites		HHs	Individuals	Sites
Dawa	Moyale	Conflict	3,620	24,149	4	NO CHANGE	3,620	24,217	4
Dawa	Mubarak	Conflict	5,043	29,085	4	NO CHANGE	5,043	29,085	4
<b>Dawa Total</b>			<b>23,199</b>	<b>182,724</b>	<b>29</b>	<b>+7.64%</b>	<b>21,553</b>	<b>134,269</b>	<b>27</b>
Doolo	Boh	Drought	1,513	8,918	6	-5.20%	1,596	10,761	6
Doolo	Danot	Drought	3,016	19,169	10	+4.32%	2,891	21,761	10
Doolo	Daratole	Drought	1,249	7,569	5	+2.46%	1,219	8,801	4
Doolo	Gal Hamer	Drought	868	5,150	3	+5.34%	824	5,985	3
Doolo	Geladin	Drought	2,600	14,556	10	-15.12%	3,063	22,542	10
Doolo	Lahel Yu'Ub	Drought	2,160	12,352	4	-0.28%	2,166	13,595	4
Doolo	Warder	Drought	4,419	26,369	10	-4.06%	4,606	30,444	10
Doolo	Warder	Flash Flood	287	1,813	3	NEW/UNCOVERED	-	-	-



# DISPLACEMENT TRACKING MATRIX (DTM) SOMALI REGION

ROUND 8: NOVEMBER - DECEMBER 2017

## CAUSE OF DISPLACEMENT BY ZONE AND WOREDA IN ROUND 7 AND 8

Increase in IDP numbers from previous round of assessment ■  
 Decrease in IDP numbers from previous round of assessment ■  
 No change from previous round of assessment ■  
 New site or uncovered site ■

Zone	Woreda	Displacement Reason	Round 8			% change in estimated # of HHs	Round 7		
			HHs	Individuals	Sites		HHs	Individuals	Sites
<b>Doolo Total</b>			<b>16,112</b>	<b>95,896</b>	<b>51</b>	-1.55%	<b>16,365</b>	<b>113,889</b>	<b>47</b>
Erer	Lagahida	Conflict	895	6,040	4	+65.74%	540	3,793	3
Erer	Lagahida	Drought	163	1,061	1	-13.76%	189	1,239	1
Erer	Mayamuluqo	Conflict	1,077	8,636	3	+9.90%	980	6,604	3
Erer	Qubi	Conflict	2,037	14,569	6	-5.74%	2,161	14,102	6
Erer	Qubi	Drought	35	245	1	-50.00%	70	421	1
Erer	Salahad	Conflict	1,628	11,172	7	+29.00%	1,262	8,248	6
Erer	Salahad	Drought	60	414	1	-1.64%	61	438	1
<b>Erer Total</b>			<b>5,895</b>	<b>42,137</b>	<b>23</b>	+12.01%	<b>5,263</b>	<b>34,845</b>	<b>21</b>
Fafan	Babile	Conflict	12,085	84,519	8	+24.36%	9,718	66,543	9
Fafan	Gursum	Conflict	2,542	18,067	9	+8.63%	2,340	12,888	7



# DISPLACEMENT TRACKING MATRIX (DTM) SOMALI REGION

ROUND 8: NOVEMBER - DECEMBER 2017

## CAUSE OF DISPLACEMENT BY ZONE AND WOREDA IN ROUND 7 AND 8

Increase in IDP numbers from previous round of assessment ■  
 Decrease in IDP numbers from previous round of assessment ■  
 No change from previous round of assessment ■  
 New site or uncovered site ■

Zone	Woreda	Displacement Reason	Round 8			% change in estimated # of HHs	Round 7		
			HHs	Individuals	Sites		HHs	Individuals	Sites
Fafan	Hareshen	Drought	85	264	1	NO CHANGE	85	639	1
Fafan	Kebribeyah	Drought	1,320	8,745	1	NO CHANGE	1,320	9,504	1
Fafan	Tuliguled	Conflict	1,638	10,026	4	+0.80%	1,625	10,090	5
<b>Fafan Total</b>			<b>17,670</b>	<b>121,621</b>	<b>23</b>	<b>+17.11%</b>	<b>15,088</b>	<b>99,664</b>	<b>23</b>
Jarar	Aware	Drought	806	5,308	2	+4.13%	774	4,752	2
Jarar	Bil'ilbur	Drought	413	2,664	2	+8.68%	380	1,965	2
Jarar	Daror	Drought	1,228	7,350	3	+0.74%	1,219	7,897	3
Jarar	Degehabur	Drought	275	1,774	1	+23.87%	222	1,268	2
Jarar	Dig	Drought	687	4,122	1	-2.14%	702	3,731	1
Jarar	Gashamo	Drought	4,114	24,486	5	+0.10%	4,110	26,782	5
Jarar	Gunagado	Drought	736	4,724	2	+1.94%	722	4,646	2





# DISPLACEMENT TRACKING MATRIX (DTM) SOMALI REGION

ROUND 8: NOVEMBER - DECEMBER 2017

## CAUSE OF DISPLACEMENT BY ZONE AND WOREDA IN ROUND 7 AND 8

Increase in IDP numbers from previous round of assessment ■  
 Decrease in IDP numbers from previous round of assessment ■  
 No change from previous round of assessment ■  
 New site or uncovered site ■

Zone	Woreda	Displacement Reason	Round 8			% change in estimated # of HHs	Round 7		
			HHs	Individuals	Sites		HHs	Individuals	Sites
Jarar	Yoale	Drought	36	227	1	NO CHANGE	36	217	1
<b>Jarar Total</b>			<b>8,295</b>	<b>50,655</b>	<b>17</b>	<b>+1.59%</b>	<b>8,165</b>	<b>51,258</b>	<b>18</b>
Korahe	Bodaley	Drought	49	290	1	NO CHANGE	49	294	1
Korahe	Debeweyin	Drought	277	1,532	2	+4.14%	266	1,656	2
Korahe	El-ogaden	Drought	120	637	2	+3.45%	116	700	2
Korahe	Goglo	Drought	233	1,246	4	+4.02%	224	1,428	4
Korahe	Higlolay	Drought	35	189	1	NO CHANGE	35	231	1
Korahe	Kebridehar	Drought	376	1,958	4	-6.70%	403	2,564	5
Korahe	Kebridehar	Flash Flood	516	2,787	1	NO CHANGE	516	3,071	1
Korahe	Kebridehar City	Drought	57	315	2	+128.00%	25	163	1
Korahe	Laasdhankayre	Drought	35	186	1	NO CHANGE	35	201	1
Korahe	Marsin	Drought	1,039	6,176	5	+1.27%	1,026	6,274	5



# DISPLACEMENT TRACKING MATRIX (DTM) SOMALI REGION

ROUND 8: NOVEMBER - DECEMBER 2017

## CAUSE OF DISPLACEMENT BY ZONE AND WOREDA IN ROUND 7 AND 8

Increase in IDP numbers from previous round of assessment ■  
 Decrease in IDP numbers from previous round of assessment ■  
 No change from previous round of assessment ■  
 New site or uncovered site ■

Zone	Woreda	Displacement Reason	Round 8			% change in estimated # of HHs	Round 7		
			HHs	Individuals	Sites		HHs	Individuals	Sites
Korahe	Shekosh	Drought	65	397	1	NO CHANGE	65	438	1
Korahe	Shilabo	Drought	407	2,172	4	+6.82%	381	2,468	4
<b>Korahe Total</b>			<b>3,209</b>	<b>17,885</b>	<b>28</b>	<b>+2.16%</b>	<b>3,141</b>	<b>19,488</b>	<b>28</b>
Liben	Deka Seftu	Conflict	6,398	53,471	11	+137.58%	2,693	14,679	6
Liben	Dolo Odo	Drought	229	1,368	2	-15.19%	270	1,512	2
Liben	Filtu	Conflict	4,816	35,832	21	-0.02%	4,817	27,937	21
Liben	Karsa Dulla	Conflict	1,875	11,182	6	+202.91%	619	3,411	3
<b>Liben Total</b>			<b>13,318</b>	<b>101,853</b>	<b>40</b>	<b>+58.57%</b>	<b>8,399</b>	<b>47,539</b>	<b>32</b>



# DISPLACEMENT TRACKING MATRIX (DTM) SOMALI REGION

ROUND 8: NOVEMBER - DECEMBER 2017

## CAUSE OF DISPLACEMENT BY ZONE AND WOREDA IN ROUND 7 AND 8

Increase in IDP numbers from previous round of assessment ■  
 Decrease in IDP numbers from previous round of assessment ■  
 No change from previous round of assessment ■  
 New site or uncovered site ■

Zone	Woreda	Displacement Reason	Round 8			% change in estimated # of HHs	Round 7		
			HHs	Individuals	Sites		HHs	Individuals	Sites
Nogob	Dihun	Drought	997	6,264	6	+9.08%	914	5,913	6
Nogob	Elwayne	Drought	716	4,741	7	-8.56%	783	4,144	7
Nogob	Gerbo	Conflict	48	309	1	NO CHANGE	48	292	1
Nogob	Gerbo	Drought	1,518	10,270	12	+4.76%	1,449	8,884	12
Nogob	Segeg	Conflict	52	332	1	+8.33%	48	249	1
Nogob	Segeg	Drought	636	4,425	4	+12.17%	567	3,507	4
<b>Nogob Total</b>			<b>3,967</b>	<b>26,341</b>	<b>31</b>	<b>+4.15%</b>	<b>3,809</b>	<b>22,989</b>	<b>31</b>
Shabelle	Abaqaro	Drought	100	655	1	-33.77%	151	1,102	1
Shabelle	Adadle	Drought	2,186	13,461	11	-2.71%	2,247	14,903	11
Shabelle	Berano	Drought	280	1,778	2	+7.28%	261	1,660	2
Shabelle	Denan	Drought	894	5,500	6	+5.92%	844	5,264	6
Shabelle	East Imi	Drought	325	1,990	2	-17.72%	395	2,990	2



# DISPLACEMENT TRACKING MATRIX (DTM) SOMALI REGION, ROUND 8: NOVEMBER - DECEMBER 2017

## CAUSE OF DISPLACEMENT BY ZONE AND WOREDA IN ROUND 7 AND 8

Increase in IDP numbers from previous round of assessment ■  
 Decrease in IDP numbers from previous round of assessment ■  
 No change from previous round of assessment ■  
 New site or uncovered site ■

Zone	Woreda	Displacement Reason	Round 8			% change in estimated # of HHs	Round 7		
			HHs	Individuals	Sites		HHs	Individuals	Sites
Shabelle	Elele	Drought	255	1,544	1	+26.87%	201	1,438	1
Shabelle	Gode	Drought	344	2,356	3	+3.30%	333	2,586	3
Shabelle	Kelafo	Drought	701	5,198	3	-16.55%	840	6,273	3
<b>Shabelle Total</b>			<b>5,085</b>	<b>32,482</b>	<b>29</b>	-3.55%	<b>5,272</b>	<b>36,216</b>	<b>29</b>
Siti	Afdem	Drought	1,314	10,023	6	-10.79%	1,473	9,253	6
Siti	Erer	Drought	2,430	16,290	3	+0.58%	2,416	15,106	3
Siti	Gablalu	Drought	2,319	15,658	3	+8.82%	2,131	14,312	3
Siti	Gota-Biki	Drought	212	1,579	2	-7.02%	228	1,502	2
Siti	Hadgalo	Drought	472	2,892	2	+9.26%	432	2,585	2
Siti	Miesso	Conflict	2,648	17,284	6	+18.74%	2,230	13,833	6
Siti	Miesso	Drought	2,372	14,902	8	+6.70%	2,223	13,975	8
Siti	Shinile	Conflict	330	2,296	1	NEW/UNCOVERED	-	-	-





# DISPLACEMENT TRACKING MATRIX (DTM) SOMALI REGION

ROUND 8: NOVEMBER - DECEMBER 2017

## CAUSE OF DISPLACEMENT BY ZONE AND WOREDA IN ROUND 7 AND 8

Increase in IDP numbers from previous round of assessment ■  
 Decrease in IDP numbers from previous round of assessment ■  
 No change from previous round of assessment ■  
 New site or uncovered site ■

Zone	Woreda	Displacement Reason	Round 8			% change in estimated # of HHs	Round 7		
			HHs	Individuals	Sites		HHs	Individuals	Sites
Siti	Shinile	Drought	550	3,271	1	NO CHANGE	550	3,605	1
<b>Siti Total</b>			<b>12,647</b>	<b>84,195</b>	<b>32</b>	<b>+8.25%</b>	<b>11,683</b>	<b>74,171</b>	<b>31</b>
<b>Conflict Total</b>			<b>62,000</b>	<b>460,888</b>	<b>118</b>	<b>+21.41%</b>	<b>51,068</b>	<b>319,660</b>	<b>108</b>
<b>Drought Total</b>			<b>55,916</b>	<b>341,425</b>	<b>209</b>	<b>+1.63%</b>	<b>55,018</b>	<b>360,490</b>	<b>208</b>
<b>Flash Flood Total</b>			<b>803</b>	<b>4,600</b>	<b>4</b>	<b>+55.62%</b>	<b>516</b>	<b>3,071</b>	<b>1</b>
<b>Grand Total</b>			<b>118,719</b>	<b>806,913</b>	<b>331</b>	<b>+11.37%</b>	<b>106,602</b>	<b>683,221</b>	<b>317</b>



# DISPLACEMENT TRACKING MATRIX (DTM) SOMALI REGION

ROUND 8: NOVEMBER - DECEMBER 2017

## INACCESSIBLE SITES IN SOMALI REGION ROUND 8

Zone	Woreda	Site Name	Number of Households	Number of Individuals	Driver of Displacement	Round of last assessment
Dawa	Hudet	Daka Wata	1286	201	Conflict	6
Dawa	Hudet	Dire Dima	1391	203	Conflict	6
Dawa	Moyale	Bali	3906	620	Conflict	6
Dawa	Moyale	Burgab	13132	1960	Conflict	6
Dawa	Moyale	Kabanawa	4935	700	Conflict	6
Dawa	Mubarak	Alobirti	4368	780	Conflict	6
Dawa	Mubarak	Galgalo	10272	1650	Conflict	6
Dawa	Mubarak	Odadima	10525	1913	Conflict	6
Dawa	Mubarak	Warwalo	3920	700	Conflict	6
Doolo	Gal Hamer	Maygaagle	455	74	Drought	6
Fafan	Babile	Kulmiya	2230	504	Conflict	6
Fafan	Tuliguled	Dangago	2160	360	Conflict	6
Siti	Afdem	Danlahelay	1090	165	Drought	6
Fafan	Gursum	Dhufayska	580	100	Conflict	7
Shabelle	Kelafo	EL-Baar	3529	441	Drought	7
<b>Total</b>			<b>10371</b>	<b>63,779</b>		



# DISPLACEMENT TRACKING MATRIX (DTM) SOMALI REGION

ROUND 8: NOVEMBER - DECEMBER 2017

## ABOUT DTM

### DTM GLOBAL

The Displacement Tracking Matrix (DTM) is a system to track and monitor displacement and population mobility. It is designed to regularly and systematically capture, process and disseminate information to provide a better understanding of the movements and evolving needs of displaced populations, whether on site or en route. More information is available at [www.globaldtm.info](http://www.globaldtm.info).

### DTM IN ETHIOPIA

In Ethiopia, data is collected at zone, woreda and site level. Since September 2016, eight rounds of assessments have been completed. The DTM programme is implemented in close collaboration with the National Disaster Risk Management Commission, regional, zonal and woreda counterparts and DTMs implementing partners, the Danish Refugee Council (DRC).

### METHODOLOGY

IOM's DTM team composed of enumerators from IOM and DRC were deployed across the country to collect the data. The process involved the following steps:

**Zone level:** Interviews with key informants from

the Disaster Prevention and Preparedness Office (DPPO), community representatives, and the education and health offices collect Information including (among others) estimated caseload of displaced population, identification of woredas within the zone that host displaced populations, reason for displacement, time of arrival of IDPs and location of origin.

**Woreda level:** Information is collected from key woreda informants and includes (among others) estimated length of stay, number of displaced households and individuals at woreda level, displaced population by type of temporary settlements and approximate locations of identifiable displacement sites. The information is used to plan site assessments.

**Site assessments:** In-depth IDP site assessments capture detailed information through key informant interviews, direct observation and focus group discussions with male, female, elderly, children and IDP representatives. Data on available services by sector, accessibility constraints, exact type, location and name of the site, place of origin of IDPs, estimated size and type of the site and most common type of shelter are captured. Age and gender disaggregation for the site is extrapolated using a demographic calculator

tool based on the age range and sex of the household members of 20 randomly selected households from the site.

### For more information:

Mr Robert Trigwell  
DTM Coordinator - IOM Ethiopia  
[rtrigwell@iom.int](mailto:rtrigwell@iom.int)

Ms Nikki Herwanger  
DTM Information Management Officer  
[NHerwanger@iom.int](mailto:NHerwanger@iom.int)



**USAID**  
FROM THE AMERICAN PEOPLE



Humanitarian Aid  
and Civil Protection



Schweizerische Eidgenossenschaft  
Confédération suisse  
Confederazione Svizzera  
Confederaziun svizra

Swiss Agency for Development  
and Cooperation SDC



International Organization for Migration (IOM)

The UN Migration Agency

**ANNEX I : INTERNAL DISPLACEMENTS IN SOMALI REGION AS OF DECEMBER 2017**

Zone	Woreda	Sex	Age Groups					Total	HHs	Site Open Date	Cause	Duration
			Infants (0-4 y)	Children (5-14 y)	Youth (15-17 y)	Adults (18-59 y)	Elderly (60 +y)					
Afder	Bare	Male	70	38	38	43	43	232	108	02-Mar-17	Drought	In 2017
Afder	Bare	Female	59	49	54	108	54	324	108			
Afder	Bare	Male	83	47	47	65	30	272	118	04-Mar-17	Drought	In 2017
Afder	Bare	Female	83	41	59	112	35	330	118			
Afder	Bare	Male	122	101	132	142	81	578	203	10-Mar-17	Drought	In 2017
Afder	Bare	Female	142	91	122	203	81	639	203			
Afder	Bare	Male	163	146	146	146	130	731	325	20-Mar-17	Drought	In 2017
Afder	Bare	Female	163	179	130	325	130	927	325			
Afder	Bare	Male	54	45	31	40	22	192	90	20-Apr-17	Drought	In 2017
Afder	Bare	Female	58	50	59	86	22	275	90			
Afder	Bare	Male	385	220	220	303	137	1,265	550	24-Apr-17	Drought	In 2017
Afder	Bare	Female	385	193	275	522	165	1,540	550			
Afder	Bare	Male	284	241	241	288	198	1,252	536	20-May-17	Drought	In 2017
Afder	Bare	Female	284	263	292	520	214	1,573	536			
Afder	Bare	Male	247	206	206	227	144	1,030	412	25-May-17	Drought	In 2017
Afder	Bare	Female	247	288	288	412	144	1,379	412			
Afder	Chereti/Weyib	Male	446	315	262	394	184	1,601	525	07-Jan-17	Drought	In 2017
Afder	Chereti/Weyib	Female	420	341	263	525	184	1,733	525			
Afder	Chereti/Weyib	Male	158	142	142	142	126	710	316	20-Jun-17	Drought	In 2017
Afder	Chereti/Weyib	Female	158	174	126	316	126	900	316			
Afder	Dolobay	Male	1,042	600	600	867	424	3,533	1,575	10-Jan-17	Drought	In 2017
Afder	Dolobay	Female	1,102	642	818	1,526	503	4,591	1,575			
Afder	Dolobay	Male	202	128	128	183	128	769	367	01-Mar-17	Drought	In 2017
Afder	Dolobay	Female	183	165	165	367	128	1,008	367			
Afder	Dolobay	Male	170	106	95	95	85	551	212	01-Apr-17	Drought	In 2017
Afder	Dolobay	Female	127	95	117	106	106	551	212			
Afder	God God	Male	181	151	151	211	121	815	302	05-Apr-17	Drought	In 2017
Afder	God God	Female	166	151	151	302	106	876	302			
Afder	God God	Male	153	127	127	204	89	700	255	12-Apr-17	Drought	In 2017
Afder	God God	Female	140	127	153	255	89	764	255			
Afder	God God	Male	178	163	134	193	134	802	297	04-May-17	Drought	In 2017
Afder	God God	Female	163	163	148	282	119	875	297			
Afder	God God	Male	37	31	37	44	27	176	68	15-May-17	Drought	In 2017
Afder	God God	Female	37	31	41	68	27	204	68			
Afder	Hargele	Male	112	91	101	122	91	517	203	10-Jan-17	Drought	In 2017
Afder	Hargele	Female	132	122	152	203	91	700	203			
Afder	Hargele	Male	113	101	101	101	90	506	225	02-Feb-17	Drought	In 2017
Afder	Hargele	Female	113	124	90	225	90	642	225			
Afder	Hargele	Male	179	197	144	215	144	879	359	10-Jun-17	Drought	In 2017
Afder	Hargele	Female	215	287	179	359	126	1,166	359			
Afder	Qoohle	Male	181	106	121	136	106	650	302	05-May-17	Drought	In 2017
Afder	Qoohle	Female	181	227	181	302	106	997	302			
Afder	Qoohle	Male	431	323	323	395	287	1,759	718	07-Jul-17	Drought	In 2017
Afder	Qoohle	Female	395	467	503	718	287	2,370	718			





International Organization for Migration (IOM)

The UN Migration Agency

**ANNEX I : INTERNAL DISPLACEMENTS IN SOMALI REGION AS OF DECEMBER 2017**

Zone	Woreda	Sex	Age Groups					Total	HHs	Site Open Date	Cause	Duration
			Infants (0-4 y)	Children (5-14 y)	Youth (15-17 y)	Adults (18-59 y)	Elderly (60 +y)					
Afder	Qoohle	Male	247	141	141	194	88	811	353	06-Aug-17	Drought	In 2017
Afder	Qoohle	Female	247	124	176	335	106	988	353			
Afder	Raso	Male	26	22	24	24	24	120	48	03-Jun-15	Drought	In 2017
Afder	Raso	Female	31	24	26	48	24	153	48			
Afder	Raso	Male	74	68	62	68	55	327	123	06-Apr-17	Drought	In 2017
Afder	Raso	Female	80	80	74	123	55	412	123			
Afder	Raso	Male	403	366	403	549	329	2,050	732	05-Oct-17	Conflict	In 2017
Afder	Raso	Female	366	476	476	732	329	2,379	732			
<b>Afder Total</b>			<b>11,418</b>	<b>9,196</b>	<b>9,275</b>	<b>14,471</b>	<b>6,764</b>	<b>51,124</b>	<b>18,644</b>			
Dawa	Hudet	Male	559	1,118	1,204	1,290	430	4,601	860	18-Oct-11	Conflict	Before 2016
Dawa	Hudet	Female	774	430	946	1,161	344	3,655	860			
Dawa	Hudet	Male	779	801	1,074	994	520	4,168	1,131	15-May-12	Conflict	Before 2016
Dawa	Hudet	Female	995	1,163	1,348	1,510	584	5,600	1,131			
Dawa	Hudet	Male	1,814	2,209	3,786	3,277	1,468	12,554	3,423	18-May-12	Conflict	Before 2016
Dawa	Hudet	Female	1,644	2,644	3,261	4,419	1,447	13,415	3,423			
Dawa	Hudet	Male	322	451	741	547	225	2,286	644	20-May-12	Conflict	Before 2016
Dawa	Hudet	Female	483	869	902	708	419	3,381	644			
Dawa	Hudet	Male	682	1,193	1,392	1,022	596	4,885	1,136	21-May-12	Conflict	Before 2016
Dawa	Hudet	Female	738	1,051	1,874	1,505	824	5,992	1,136			
Dawa	Hudet	Male	1,084	1,559	2,390	2,154	890	8,077	1,946	25-May-12	Conflict	Before 2016
Dawa	Hudet	Female	1,532	2,060	3,058	2,892	1,209	10,751	1,946			
Dawa	Hudet	Male	592	1,000	1,292	1,155	573	4,612	1,020	05-Jun-12	Conflict	Before 2016
Dawa	Hudet	Female	831	864	1,143	1,290	600	4,728	1,020			
Dawa	Hudet	Male	1,449	2,221	2,361	2,307	1,179	9,517	2,145	20-Jul-12	Conflict	Before 2016
Dawa	Hudet	Female	1,315	2,440	2,629	2,790	1,230	10,404	2,145			
Dawa	Hudet	Male	114	259	238	248	166	1,025	207	08-Aug-12	Conflict	Before 2016
Dawa	Hudet	Female	238	300	248	248	176	1,210	207			
Dawa	Hudet	Male	161	131	90	141	60	583	201	10-Aug-12	Conflict	Before 2016
Dawa	Hudet	Female	171	80	111	241	100	703	201			
Dawa	Hudet	Male	470	704	1,214	939	469	3,796	783	15-Jul-14	Conflict	Before 2016
Dawa	Hudet	Female	588	1,096	1,371	1,292	509	4,856	783			
Dawa	Hudet	Male	215	449	449	331	175	1,619	390	16-Jul-16	Conflict	During 2016
Dawa	Hudet	Female	332	488	643	604	195	2,262	390			
Dawa	Hudet	Male	195	617	910	553	163	2,438	650	08-Sep-17	Conflict	In 2017
Dawa	Hudet	Female	390	390	650	650	292	2,372	650			
Dawa	Moyale	Male	682	372	310	279	217	1,860	620	20-Jun-12	Conflict	Before 2016
Dawa	Moyale	Female	434	310	341	713	248	2,046	620			
Dawa	Moyale	Male	1,960	1,323	1,029	1,274	686	6,272	1,960	10-Aug-12	Conflict	Before 2016
Dawa	Moyale	Female	1,862	1,176	1,176	2,107	539	6,860	1,960			
Dawa	Moyale	Male	630	665	385	455	245	2,380	700	12-Aug-12	Conflict	Before 2016
Dawa	Moyale	Female	700	490	350	805	210	2,555	700			
Dawa	Moyale	Male	272	221	153	238	102	986	340	10-Apr-13	Conflict	Before 2016
Dawa	Moyale	Female	289	136	187	408	170	1,190	340			
Dawa	Mubarak	Male	1,444	949	701	907	619	4,620	1,650	04-Jan-14	Conflict	Before 2016



International Organization for Migration (IOM)

The UN Migration Agency

### ANNEX I : INTERNAL DISPLACEMENTS IN SOMALI REGION AS OF DECEMBER 2017

Zone	Woreda	Sex	Age Groups					Total	HHs	Site Open Date	Cause	Duration
			Infants (0-4 y)	Children (5-14 y)	Youth (15-17 y)	Adults (18-59 y)	Elderly (60 +y)					
Dawa	Mubarak	Female	1,279	1,114	784	1,691	784	5,652	1,650	22-Jul-14	Conflict	Before 2016
Dawa	Mubarak	Male	1,402	662	662	674	448	3,848	1,480			
Dawa	Mubarak	Female	1,188	662	666	1,515	409	4,440	1,480	07-Feb-17	Conflict	In 2017
Dawa	Mubarak	Male	1,817	1,291	861	957	478	5,404	1,913			
Dawa	Mubarak	Female	626	1,243	765	1,961	526	5,121	1,913			
<b>Dawa Total</b>			<b>33,052</b>	<b>37,201</b>	<b>43,695</b>	<b>48,252</b>	<b>20,524</b>	<b>182,724</b>	<b>46,398</b>			
Doolo	Boh	Male	144	192	204	168	84	792	240	03-Jan-17	Drought	In 2017
Doolo	Boh	Female	132	168	132	192	72	696	240	04-Jan-17	Drought	In 2017
Doolo	Boh	Male	182	169	130	208	78	767	260			
Doolo	Boh	Female	156	130	143	195	78	702	260	06-Jan-17	Drought	In 2017
Doolo	Boh	Male	159	197	146	224	85	811	265			
Doolo	Boh	Female	113	192	131	229	85	750	265	08-Jan-17	Drought	In 2017
Doolo	Boh	Male	479	704	419	562	179	2,343	748			
Doolo	Boh	Female	329	419	367	643	299	2,057	748	01-Jan-17	Drought	In 2017
Doolo	Danot	Male	1,191	1,082	1,114	1,408	394	5,189	1,572			
Doolo	Danot	Female	1,136	1,122	923	1,487	465	5,133	1,572	02-Jan-17	Drought	In 2017
Doolo	Danot	Male	208	236	149	282	52	927	305			
Doolo	Danot	Female	127	166	177	282	92	844	305	05-Jan-17	Drought	In 2017
Doolo	Danot	Male	622	748	332	816	217	2,735	829			
Doolo	Danot	Female	380	660	392	781	153	2,366	829	07-Jan-17	Drought	In 2017
Doolo	Danot	Male	92	115	113	127	22	469	145			
Doolo	Danot	Female	87	109	95	138	26	455	145	09-Jan-17	Drought	In 2017
Doolo	Danot	Male	51	68	72	81	17	289	85			
Doolo	Danot	Female	60	64	64	77	17	282	85	03-Jun-17	Drought	In 2017
Doolo	Danot	Male	48	52	84	60	24	268	80			
Doolo	Danot	Female	36	52	28	72	24	212	80	01-Jan-17	Drought	In 2017
Doolo	Daratole	Male	378	407	360	434	176	1,755	554			
Doolo	Daratole	Female	194	406	277	397	157	1,431	554	07-Jan-17	Drought	In 2017
Doolo	Daratole	Male	359	453	401	471	148	1,832	545			
Doolo	Daratole	Female	315	303	374	503	116	1,611	545	08-Jun-17	Drought	In 2017
Doolo	Daratole	Male	83	105	120	135	45	488	150			
Doolo	Daratole	Female	68	128	83	128	45	452	150	02-Jan-17	Drought	In 2017
Doolo	Gal Hamer	Male	209	239	150	269	45	912	299			
Doolo	Gal Hamer	Female	164	269	60	284	60	837	299	12-Jan-17	Drought	In 2017
Doolo	Gal Hamer	Male	320	415	366	448	217	1,766	569			
Doolo	Gal Hamer	Female	381	311	359	438	146	1,635	569	01-Jan-17	Drought	In 2017
Doolo	Geladin	Male	581	622	537	892	162	2,794	1,055			
Doolo	Geladin	Female	502	818	514	954	213	3,001	1,055	02-Jan-17	Drought	In 2017
Doolo	Geladin	Male	36	39	46	49	7	177	65			
Doolo	Geladin	Female	36	29	39	52	7	163	65	12-Jan-17	Drought	In 2017
Doolo	Geladin	Male	165	210	120	285	90	870	300			
Doolo	Geladin	Female	195	195	135	285	90	900	300	08-Feb-17	Drought	In 2017
Doolo	Geladin	Male	70	109	77	83	38	377	128			
Doolo	Geladin	Female	64	90	77	96	38	365	128			



International Organization for Migration (IOM)

The UN Migration Agency

**ANNEX I : INTERNAL DISPLACEMENTS IN SOMALI REGION AS OF DECEMBER 2017**

Zone	Woreda	Sex	Age Groups					Total	HHs	Site Open Date	Cause	Duration
			Infants (0-4 y)	Children (5-14 y)	Youth (15-17 y)	Adults (18-59 y)	Elderly (60 +y)					
Doolo	Geladin	Male	236	501	353	383	147	1,620	589	11-Feb-17	Drought	In 2017
Doolo	Geladin	Female	236	471	353	412	147	1,619	589			
Doolo	Geladin	Male	165	165	255	300	45	930	300	18-May-17	Drought	In 2017
Doolo	Geladin	Female	165	225	150	300	75	915	300			
Doolo	Geladin	Male	82	73	106	147	33	441	163	28-Jul-17	Drought	In 2017
Doolo	Geladin	Female	65	90	57	139	33	384	163			
Doolo	Lahel Yu'Ub	Male	448	896	498	945	149	2,936	995	05-Jan-17	Drought	In 2017
Doolo	Lahel Yu'Ub	Female	448	448	498	896	149	2,439	995			
Doolo	Lahel Yu'Ub	Male	519	1,008	690	880	129	3,226	985	09-Jan-17	Drought	In 2017
Doolo	Lahel Yu'Ub	Female	519	599	569	880	185	2,752	985			
Doolo	Lahel Yu'Ub	Male	90	99	117	162	36	504	180	11-Jan-17	Drought	In 2017
Doolo	Lahel Yu'Ub	Female	81	99	117	162	36	495	180			
Doolo	Warder	Male	739	1,244	913	1,332	114	4,342	1,571	01-Jan-17	Drought	In 2017
Doolo	Warder	Female	932	1,359	318	1,455	148	4,212	1,571			
Doolo	Warder	Male	509	475	475	610	170	2,239	678	02-Jan-17	Drought	In 2017
Doolo	Warder	Female	475	576	441	644	136	2,272	678			
Doolo	Warder	Male	416	397	391	555	132	1,891	630	03-Jan-17	Drought	In 2017
Doolo	Warder	Female	271	517	498	605	88	1,979	630			
Doolo	Warder	Male	389	551	486	386	194	2,006	648	04-Jan-17	Drought	In 2017
Doolo	Warder	Female	324	421	486	454	162	1,847	648			
Doolo	Warder	Male	183	137	290	244	46	900	305	05-Jan-17	Drought	In 2017
Doolo	Warder	Female	229	198	153	290	61	931	305			
Doolo	Warder	Male	329	271	310	252	58	1,220	387	06-Jan-17	Drought	In 2017
Doolo	Warder	Female	213	271	310	329	77	1,200	387			
Doolo	Warder	Male	160	170	100	180	40	650	200	01-Sep-17	Drought	In 2017
Doolo	Warder	Female	140	160	170	180	30	680	200			
Doolo	Warder	Male	166	166	204	228	64	828	287	01-Nov-17	Flash Flood	In 2017
Doolo	Warder	Female	198	267	197	255	68	985	287			
<b>Doolo Total</b>			<b>18,579</b>	<b>23,647</b>	<b>18,815</b>	<b>27,840</b>	<b>7,015</b>	<b>95,896</b>	<b>32,224</b>			
Erer	Lagahida	Male	72	77	38	82	14	283	96	14-May-14	Conflict	Before 2016
Erer	Lagahida	Female	110	115	34	96	19	374	96			
Erer	Lagahida	Male	315	315	148	352	56	1,186	370	25-Dec-14	Conflict	Before 2016
Erer	Lagahida	Female	407	315	130	352	93	1,297	370			
Erer	Lagahida	Male	109	104	35	104	17	369	115	29-May-17	Conflict	In 2017
Erer	Lagahida	Female	98	109	35	109	29	380	115			
Erer	Lagahida	Male	147	98	57	147	41	490	163	03-Jun-17	Drought	In 2017
Erer	Lagahida	Female	147	187	49	155	33	571	163			
Erer	Lagahida	Male	267	298	141	283	63	1,052	314	15-Sep-17	Conflict	In 2017
Erer	Lagahida	Female	330	298	110	298	63	1,099	314			
Erer	Mayamuluqo	Male	149	165	133	149	31	627	157	08-Feb-17	Conflict	In 2017
Erer	Mayamuluqo	Female	181	212	86	157	31	667	157			
Erer	Mayamuluqo	Male	927	966	598	874	184	3,549	920	11-Feb-17	Conflict	In 2017
Erer	Mayamuluqo	Female	863	1,130	748	874	178	3,793	920			
Erer	Qubi	Male	214	326	259	203	23	1,025	225	20-Jul-14	Conflict	Before 2016



International Organization for Migration (IOM)

The UN Migration Agency

### ANNEX I : INTERNAL DISPLACEMENTS IN SOMALI REGION AS OF DECEMBER 2017

Zone	Woreda	Sex	Age Groups					Total	HHs	Site Open Date	Cause	Duration
			Infants (0-4 y)	Children (5-14 y)	Youth (15-17 y)	Adults (18-59 y)	Elderly (60 +y)					
Erer	Qubi	Female	281	293	135	225	34	968	225			
Erer	Qubi	Male	1,539	1,412	588	1,529	311	5,379	1,667	01-Oct-16	Conflict	During 2016
Erer	Qubi	Female	1,647	2,021	521	1,611	366	6,166	1,667			
Erer	Qubi	Male	102	138	58	138	29	465	145	19-Jul-17	Conflict	In 2017
Erer	Qubi	Female	167	189	36	138	36	566	145			
Erer	Qubi	Male	40	33	12	32	7	124	35	20-Jul-17	Drought	In 2017
Erer	Qubi	Female	25	42	12	35	7	121	35			
Erer	Salahad	Male	463	487	182	384	87	1,603	448	14-Apr-14	Conflict	Before 2016
Erer	Salahad	Female	345	493	163	445	96	1,542	448			
Erer	Salahad	Male	276	246	107	292	61	982	307	25-Dec-15	Conflict	Before 2016
Erer	Salahad	Female	276	246	107	292	77	998	307			
Erer	Salahad	Male	215	188	121	242	40	806	269	10-Jan-17	Conflict	In 2017
Erer	Salahad	Female	269	282	135	256	81	1,023	269			
Erer	Salahad	Male	244	255	81	209	46	835	232	10-Feb-17	Conflict	In 2017
Erer	Salahad	Female	186	255	81	232	58	812	232			
Erer	Salahad	Male	45	42	27	54	9	177	60	10-Feb-17	Drought	In 2017
Erer	Salahad	Female	72	69	27	57	12	237	60			
Erer	Salahad	Male	175	166	61	166	44	612	175	12-Apr-17	Conflict	In 2017
Erer	Salahad	Female	158	219	53	175	35	640	175			
Erer	Salahad	Male	177	148	79	177	49	630	197	03-Oct-17	Conflict	In 2017
Erer	Salahad	Female	187	167	89	197	49	689	197			
<b>Erer Total</b>			<b>11,225</b>	<b>12,106</b>	<b>5,276</b>	<b>11,121</b>	<b>2,409</b>	<b>42,137</b>	<b>11,790</b>			
Fafan	Babile	Male	572	740	337	606	101	2,356	673	25-Jan-13	Conflict	Before 2016
Fafan	Babile	Female	673	471	303	639	135	2,221	673			
Fafan	Babile	Male	251	221	177	280	44	973	295	01-Mar-14	Conflict	Before 2016
Fafan	Babile	Female	295	339	192	295	59	1,180	295			
Fafan	Babile	Male	149	177	102	177	28	633	186	10-May-14	Conflict	Before 2016
Fafan	Babile	Female	177	214	130	186	37	744	186			
Fafan	Babile	Male	338	320	207	338	56	1,259	376	08-Jun-14	Conflict	Before 2016
Fafan	Babile	Female	395	545	188	357	75	1,560	376			
Fafan	Babile	Male	5,357	5,906	2,335	5,082	687	19,367	5,494	10-Aug-16	Conflict	During 2016
Fafan	Babile	Female	4,670	6,043	2,060	5,219	961	18,953	5,494			
Fafan	Babile	Male	353	428	50	202	126	1,159	504	25-Jan-17	Conflict	In 2017
Fafan	Babile	Female	12	479	151	302	127	1,071	504			
Fafan	Babile	Male	381	314	157	403	67	1,322	448	11-Feb-17	Conflict	In 2017
Fafan	Babile	Female	470	538	224	426	67	1,725	448			
Fafan	Babile	Male	4,417	4,520	2,157	3,801	719	15,614	4,109	25-Sep-17	Conflict	In 2017
Fafan	Babile	Female	3,698	4,417	1,438	3,904	925	14,382	4,109			
Fafan	Gursum	Male	1,473	1,651	837	1,557	315	5,833	1,680	11-Sep-17	Conflict	In 2017
Fafan	Gursum	Female	1,647	1,866	776	1,678	316	6,283	1,680			
Fafan	Gursum	Male	108	77	57	93	21	356	103	13-Sep-17	Conflict	In 2017
Fafan	Gursum	Female	108	113	41	103	21	386	103			
Fafan	Gursum	Male	683	637	291	566	118	2,295	628	14-Sep-17	Conflict	In 2017
Fafan	Gursum	Female	527	596	259	628	78	2,088	628			





International Organization for Migration (IOM)

The UN Migration Agency

**ANNEX I : INTERNAL DISPLACEMENTS IN SOMALI REGION AS OF DECEMBER 2017**

Zone	Woreda	Sex	Age Groups					Total	HHs	Site Open Date	Cause	Duration
			Infants (0-4 y)	Children (5-14 y)	Youth (15-17 y)	Adults (18-59 y)	Elderly (60 +y)					
Fafan	Gursum	Male	33	33	20	31	6	123	31	15-Sep-17	Conflict	In 2017
Fafan	Gursum	Female	25	40	19	31	8	123	31			
Fafan	Gursum	Male	45	75	55	85	20	280	100	17-Sep-17	Conflict	In 2017
Fafan	Gursum	Female	70	80	35	80	35	300	100			
Fafan	Hareshen	Male	32	26	13	38	6	115	85	19-Jan-17	Drought	In 2017
Fafan	Hareshen	Female	38	49	13	40	9	149	85			
Fafan	Kebribeyah	Male	1,089	957	495	1,254	297	4,092	1,320	01-Jan-97	Drought	Before 2016
Fafan	Kebribeyah	Female	1,287	1,485	363	1,320	198	4,653	1,320			
Fafan	Tuliguled	Male	126	270	54	216	90	756	360	02-Feb-13	Conflict	Before 2016
Fafan	Tuliguled	Female	288	396	198	378	144	1,404	360			
Fafan	Tuliguled	Male	364	296	23	364	46	1,093	455	01-May-14	Conflict	Before 2016
Fafan	Tuliguled	Female	432	455	46	455	91	1,479	455			
Fafan	Tuliguled	Male	320	493	370	419	74	1,676	493	15-Apr-17	Conflict	In 2017
Fafan	Tuliguled	Female	296	518	197	493	49	1,553	493			
Fafan	Tuliguled	Male	182	231	149	248	165	975	330	28-Sep-17	Conflict	In 2017
Fafan	Tuliguled	Female	198	281	165	264	182	1,090	330			
<b>Fafan Total</b>			<b>31,579</b>	<b>36,297</b>	<b>14,684</b>	<b>32,558</b>	<b>6,503</b>	<b>121,621</b>	<b>35,340</b>			
Jarar	Aware	Male	300	354	218	409	273	1,554	545	15-Feb-17	Drought	In 2017
Jarar	Aware	Female	354	600	273	572	273	2,072	545			
Jarar	Aware	Male	170	248	144	183	167	912	261	25-Jun-17	Drought	In 2017
Jarar	Aware	Female	104	196	117	209	144	770	261			
Jarar	Bil'ilbur	Male	226	356	224	310	211	1,327	413	10-May-17	Drought	In 2017
Jarar	Bil'ilbur	Female	217	293	223	349	255	1,337	413			
Jarar	Daror	Male	779	656	82	533	123	2,173	820	05-Feb-17	Drought	In 2017
Jarar	Daror	Female	656	1,066	123	697	205	2,747	820			
Jarar	Daror	Male	213	213	22	168	22	638	224	29-Mar-17	Drought	In 2017
Jarar	Daror	Female	190	235	22	213	56	716	224			
Jarar	Daror	Male	175	175	18	147	18	533	184	01-Jun-17	Drought	In 2017
Jarar	Daror	Female	138	175	18	175	37	543	184			
Jarar	Degehabur	Male	151	234	151	193	151	880	275	02-Mar-17	Drought	In 2017
Jarar	Degehabur	Female	151	248	110	234	151	894	275			
Jarar	Dig	Male	550	790	69	515	137	2,061	687	14-Apr-17	Drought	In 2017
Jarar	Dig	Female	618	618	69	687	69	2,061	687			
Jarar	Gashamo	Male	650	780	130	737	130	2,427	867	02-Jan-17	Drought	In 2017
Jarar	Gashamo	Female	954	867	173	867	173	3,034	867			
Jarar	Gashamo	Male	560	525	70	630	35	1,820	700	04-Jan-17	Drought	In 2017
Jarar	Gashamo	Female	700	770	105	700	140	2,415	700			
Jarar	Gashamo	Male	1,299	820	205	991	103	3,418	1,367	10-Jan-17	Drought	In 2017
Jarar	Gashamo	Female	991	1,572	205	1,299	342	4,409	1,367			
Jarar	Gashamo	Male	550	440	83	495	83	1,651	550	12-Jan-17	Drought	In 2017
Jarar	Gashamo	Female	468	605	83	550	138	1,844	550			
Jarar	Gashamo	Male	473	819	32	410	63	1,797	630	19-Jan-17	Drought	In 2017
Jarar	Gashamo	Female	504	473	32	504	158	1,671	630			
Jarar	Gunagado	Male	462	528	165	627	99	1,881	660	18-Apr-17	Drought	In 2017



International Organization for Migration (IOM)  
The UN Migration Agency

### ANNEX I : INTERNAL DISPLACEMENTS IN SOMALI REGION AS OF DECEMBER 2017

Zone	Woreda	Sex	Age Groups					Total	HHs	Site Open Date	Cause	Duration
			Infants (0-4 y)	Children (5-14 y)	Youth (15-17 y)	Adults (18-59 y)	Elderly (60 +y)					
Jarar	Gunagado	Female	627	825	99	660	165	2,376	660			
Jarar	Gunagado	Male	68	49	11	61	8	197	76	23-Apr-17	Drought	In 2017
Jarar	Gunagado	Female	72	99	8	76	15	270	76			
Jarar	Yoale	Male	20	31	18	27	18	114	36	05-Feb-17	Drought	In 2017
Jarar	Yoale	Female	13	31	22	29	18	113	36			
<b>Jarar Total</b>			<b>13,403</b>	<b>15,691</b>	<b>3,324</b>	<b>14,257</b>	<b>3,980</b>	<b>50,655</b>	<b>16,590</b>			
Korahe	Bodaley	Male	44	29	7	44	5	129	49	15-Feb-17	Drought	In 2017
Korahe	Bodaley	Female	39	56	7	49	10	161	49			
Korahe	Debeweyin	Male	85	92	55	85	31	348	122	01-Jan-17	Drought	In 2017
Korahe	Debeweyin	Female	85	104	43	92	43	367	122			
Korahe	Debeweyin	Male	78	109	62	62	78	389	155	10-Jan-17	Drought	In 2017
Korahe	Debeweyin	Female	78	140	47	101	62	428	155			
Korahe	El-ogaden	Male	47	64	30	55	21	217	85	02-Apr-17	Drought	In 2017
Korahe	El-ogaden	Female	55	72	26	55	26	234	85			
Korahe	El-ogaden	Male	16	25	12	19	12	84	35	07-Apr-17	Drought	In 2017
Korahe	El-ogaden	Female	26	23	14	30	9	102	35			
Korahe	Goglo	Male	16	18	18	23	5	80	35	03-Jan-17	Drought	In 2017
Korahe	Goglo	Female	23	25	11	26	11	96	35			
Korahe	Goglo	Male	56	74	41	48	11	230	74	07-Jan-17	Drought	In 2017
Korahe	Goglo	Female	41	48	19	48	19	175	74			
Korahe	Goglo	Male	50	97	31	65	31	274	124	17-Jan-17	Drought	In 2017
Korahe	Goglo	Female	122	118	40	83	28	391	124			
Korahe	Higlolay	Male	21	19	7	28	7	82	35	21-Jun-17	Drought	In 2017
Korahe	Higlolay	Female	28	33	4	30	12	107	35			
Korahe	Kebridehar	Male	79	95	77	81	29	361	153	01-Jan-17	Drought	In 2017
Korahe	Kebridehar	Female	109	86	68	92	34	389	153			
Korahe	Kebridehar	Male	49	110	73	73	43	348	122	13-Jan-17	Drought	In 2017
Korahe	Kebridehar	Female	110	73	24	85	43	335	122			
Korahe	Kebridehar	Male	40	71	35	71	15	232	101	17-Jan-17	Drought	In 2017
Korahe	Kebridehar	Female	71	91	40	56	35	293	101			
Korahe	Kebridehar	Male	181	439	232	335	52	1,239	516	14-May-17	Flash Flood	In 2017
Korahe	Kebridehar	Female	413	464	155	387	129	1,548	516			
Korahe	Kebridehar City	Male	40	16	13	19	10	98	32	01-Jan-17	Drought	In 2017
Korahe	Kebridehar City	Female	21	21	11	24	11	88	32			
Korahe	Kebridehar City	Male	9	15	13	13	8	58	25	01-May-17	Drought	In 2017
Korahe	Kebridehar City	Female	18	18	10	14	11	71	25			
Korahe	Laasdhankayre	Male	14	35	16	21	7	93	35	15-Jun-17	Drought	In 2017
Korahe	Laasdhankayre	Female	30	14	14	26	9	93	35			
Korahe	Marsin	Male	142	196	18	320	-	676	356	15-Jan-17	Drought	In 2017
Korahe	Marsin	Female	463	392	71	356	53	1,335	356			
Korahe	Marsin	Male	24	19	11	33	7	94	37	19-Jan-17	Drought	In 2017
Korahe	Marsin	Female	35	67	7	35	9	153	37			
Korahe	Marsin	Male	342	369	92	531	42	1,376	600	20-Jan-17	Drought	In 2017
Korahe	Marsin	Female	649	849	71	591	111	2,271	600			



International Organization for Migration (IOM)

The UN Migration Agency

**ANNEX I : INTERNAL DISPLACEMENTS IN SOMALI REGION AS OF DECEMBER 2017**

Zone	Woreda	Sex	Age Groups					Total	HHs	Site Open Date	Cause	Duration
			Infants (0-4 y)	Children (5-14 y)	Youth (15-17 y)	Adults (18-59 y)	Elderly (60 +y)					
Korahe	Marsin	Male	28	39	5	46	-	118	46	20-Apr-17	Drought	In 2017
Korahe	Marsin	Female	41	48	16	46	2	153	46			
Korahe	Shekosh	Male	55	52	10	59	3	179	65	26-Jun-17	Drought	In 2017
Korahe	Shekosh	Female	55	72	10	65	16	218	65			
Korahe	Shilabo	Male	152	99	105	211	79	646	264	01-Jan-17	Drought	In 2017
Korahe	Shilabo	Female	231	212	67	205	73	788	264			
Korahe	Shilabo	Male	79	42	21	79	21	242	105	07-Jan-17	Drought	In 2017
Korahe	Shilabo	Female	89	79	37	74	16	295	105			
Korahe	Shilabo	Male	25	11	15	27	6	84	38	18-Jan-17	Drought	In 2017
Korahe	Shilabo	Female	27	38	17	27	8	117	38			
<b>Korahe Total</b>			<b>4,531</b>	<b>5,278</b>	<b>1,828</b>	<b>4,945</b>	<b>1,303</b>	<b>17,885</b>	<b>6,418</b>			
Liben	Deka Seftu	Male	319	205	228	296	228	1,276	456	05-Mar-16	Conflict	During 2016
Liben	Deka Seftu	Female	365	251	182	388	296	1,482	456			
Liben	Deka Seftu	Male	152	124	76	86	86	524	190	06-Apr-16	Conflict	During 2016
Liben	Deka Seftu	Female	152	133	105	152	114	656	190			
Liben	Deka Seftu	Male	147	130	73	114	62	526	255	16-May-16	Conflict	Before 2016
Liben	Deka Seftu	Female	155	139	114	171	114	693	255			
Liben	Deka Seftu	Male	1,163	1,094	923	923	1,129	5,232	1,368	10-Jun-16	Conflict	During 2016
Liben	Deka Seftu	Female	1,163	1,197	855	1,300	1,334	5,849	1,368			
Liben	Deka Seftu	Male	961	876	593	678	876	3,984	1,130	28-Jun-16	Conflict	During 2016
Liben	Deka Seftu	Female	848	1,045	706	3,955	932	7,486	1,130			
Liben	Deka Seftu	Male	168	179	105	137	137	726	169	10-Jul-16	Conflict	During 2016
Liben	Deka Seftu	Female	179	168	147	211	168	873	169			
Liben	Deka Seftu	Male	1,866	1,941	1,489	1,776	1,587	8,659	1,951	03-Sep-17	Conflict	In 2017
Liben	Deka Seftu	Female	1,882	2,019	1,689	2,442	2,111	10,143	1,951			
Liben	Deka Seftu	Male	703	527	352	571	396	2,549	879	05-Oct-17	Conflict	In 2017
Liben	Deka Seftu	Female	659	440	352	747	615	2,813	879			
Liben	Dolo Odo	Male	71	142	20	67	8	308	79	10-Jan-17	Drought	In 2017
Liben	Dolo Odo	Female	71	87	20	83	8	269	79			
Liben	Dolo Odo	Male	83	173	38	105	8	407	150	04-Feb-17	Drought	In 2017
Liben	Dolo Odo	Female	113	120	-	143	8	384	150			
Liben	Filtu	Male	214	113	75	214	100	716	214	01-Mar-12	Conflict	Before 2016
Liben	Filtu	Female	201	138	126	214	126	805	214			
Liben	Filtu	Male	198	169	127	226	88	808	198	10-Mar-12	Conflict	Before 2016
Liben	Filtu	Female	198	141	70	268	84	761	198			
Liben	Filtu	Male	259	103	138	259	174	933	259	03-Apr-12	Conflict	Before 2016
Liben	Filtu	Female	242	155	103	242	155	897	259			
Liben	Filtu	Male	305	221	102	238	101	967	306	10-Apr-12	Conflict	Before 2016
Liben	Filtu	Female	255	170	136	306	101	968	306			
Liben	Filtu	Male	415	399	289	445	226	1,774	415	14-Apr-12	Conflict	Before 2016
Liben	Filtu	Female	415	382	257	543	241	1,838	415			
Liben	Filtu	Male	216	183	133	232	167	931	216	15-Apr-12	Conflict	Before 2016
Liben	Filtu	Female	299	166	149	282	183	1,079	216			
Liben	Filtu	Male	265	165	66	281	99	876	265	16-Apr-12	Conflict	Before 2016



International Organization for Migration (IOM)

The UN Migration Agency

**ANNEX I : INTERNAL DISPLACEMENTS IN SOMALI REGION AS OF DECEMBER 2017**

Zone	Woreda	Sex	Age Groups					Total	HHs	Site Open Date	Cause	Duration
			Infants (0-4 y)	Children (5-14 y)	Youth (15-17 y)	Adults (18-59 y)	Elderly (60 +y)					
Liben	Filtu	Female	248	182	82	331	140	983	265			
Liben	Filtu	Male	191	159	111	207	95	763	191	18-Apr-12	Conflict	Before 2016
Liben	Filtu	Female	222	95	111	191	159	778	191			
Liben	Filtu	Male	210	115	52	147	63	587	210	22-Apr-12	Conflict	Before 2016
Liben	Filtu	Female	140	31	31	189	52	443	210			
Liben	Filtu	Male	354	354	59	472	88	1,327	354	25-Apr-12	Conflict	Before 2016
Liben	Filtu	Female	324	295	177	442	147	1,385	354			
Liben	Filtu	Male	156	136	39	166	49	546	156	03-May-12	Conflict	Before 2016
Liben	Filtu	Female	127	107	68	156	68	526	156			
Liben	Filtu	Male	481	414	282	581	216	1,974	481	10-May-12	Conflict	Before 2016
Liben	Filtu	Female	447	331	249	580	331	1,938	481			
Liben	Filtu	Male	200	105	105	126	73	609	200	13-May-12	Conflict	Before 2016
Liben	Filtu	Female	200	116	84	63	42	505	200			
Liben	Filtu	Male	429	558	291	570	284	2,132	541	02-Jun-12	Conflict	Before 2016
Liben	Filtu	Female	502	356	265	674	329	2,126	541			
Liben	Filtu	Male	164	164	70	199	93	690	164	10-Jul-12	Conflict	Before 2016
Liben	Filtu	Female	176	164	70	222	93	725	164			
Liben	Filtu	Male	196	138	115	172	57	678	196	11-Jul-12	Conflict	Before 2016
Liben	Filtu	Female	184	92	69	207	46	598	196			
Liben	Filtu	Male	246	184	123	246	123	922	246	15-Aug-12	Conflict	Before 2016
Liben	Filtu	Female	215	169	123	246	154	907	246			
Liben	Filtu	Male	204	115	76	178	89	662	204	05-Oct-12	Conflict	Before 2016
Liben	Filtu	Female	178	127	51	217	102	675	204			
Liben	Karsa Dulla	Male	178	152	114	178	140	762	254	03-Jun-16	Conflict	During 2016
Liben	Karsa Dulla	Female	178	127	114	203	140	762	254			
Liben	Karsa Dulla	Male	310	206	169	281	169	1,135	375	24-Jun-16	Conflict	During 2016
Liben	Karsa Dulla	Female	299	206	159	291	216	1,171	375			
Liben	Karsa Dulla	Male	299	256	107	278	149	1,089	427	03-Sep-17	Conflict	In 2017
Liben	Karsa Dulla	Female	363	299	214	363	214	1,453	427			
Liben	Karsa Dulla	Male	613	412	349	493	386	2,253	819	05-Sep-17	Conflict	In 2017
Liben	Karsa Dulla	Female	613	346	472	698	428	2,557	819			
<b>Liben Total</b>			<b>23,349</b>	<b>20,006</b>	<b>14,239</b>	<b>27,462</b>	<b>16,797</b>	<b>101,853</b>	<b>26,636</b>			
Nogob	Dihun	Male	126	302	137	352	63	980	369	15-Jan-17	Drought	In 2017
Nogob	Dihun	Female	225	341	126	406	84	1,182	369			
Nogob	Dihun	Male	38	102	89	191	76	496	254	25-Jan-17	Drought	In 2017
Nogob	Dihun	Female	165	394	368	267	165	1,359	254			
Nogob	Dihun	Male	62	98	15	98	21	294	103	14-Feb-17	Drought	In 2017
Nogob	Dihun	Female	67	113	21	108	31	340	103			
Nogob	Dihun	Male	136	271	68	190	54	719	271	20-Feb-17	Drought	In 2017
Nogob	Dihun	Female	149	285	122	257	81	894	271			
Nogob	Elwayne	Male	233	594	246	469	160	1,702	646	15-Jan-17	Drought	In 2017
Nogob	Elwayne	Female	456	791	483	596	274	2,600	646			
Nogob	Elwayne	Male	28	49	25	67	14	183	70	17-Jan-17	Drought	In 2017
Nogob	Elwayne	Female	49	70	49	70	18	256	70			



International Organization for Migration (IOM)

The UN Migration Agency

**ANNEX I : INTERNAL DISPLACEMENTS IN SOMALI REGION AS OF DECEMBER 2017**

Zone	Woreda	Sex	Age Groups					Total	HHs	Site Open Date	Cause	Duration
			Infants (0-4 y)	Children (5-14 y)	Youth (15-17 y)	Adults (18-59 y)	Elderly (60 +y)					
Nogob	Gerbo	Male	12	48	17	48	10	135	48	05-Oct-16	Conflict	During 2016
Nogob	Gerbo	Female	48	46	22	41	17	174	48			
Nogob	Gerbo	Male	16	55	49	68	10	198	65	01-Jan-17	Drought	In 2017
Nogob	Gerbo	Female	52	68	33	65	20	238	65			
Nogob	Gerbo	Male	135	160	123	221	49	688	246	07-Jan-17	Drought	In 2017
Nogob	Gerbo	Female	160	271	86	234	62	813	246			
Nogob	Gerbo	Male	531	1,078	534	975	267	3,385	1,091	10-Jan-17	Drought	In 2017
Nogob	Gerbo	Female	852	1,372	574	1,053	333	4,184	1091			
Nogob	Gerbo	Male	41	89	41	69	16	256	81	09-Feb-17	Drought	In 2017
Nogob	Gerbo	Female	57	93	36	77	24	287	81			
Nogob	Gerbo	Male	18	30	19	32	9	108	35	17-Jul-17	Drought	In 2017
Nogob	Gerbo	Female	23	33	11	35	11	113	35			
Nogob	Segeg	Male	23	26	29	44	13	135	52	05-Oct-16	Conflict	During 2016
Nogob	Segeg	Female	21	42	49	62	23	197	52			
Nogob	Segeg	Male	96	249	137	256	91	829	337	10-Jan-17	Drought	In 2017
Nogob	Segeg	Female	223	398	350	371	158	1,500	337			
Nogob	Segeg	Male	105	344	150	314	75	988	299	11-Jan-17	Drought	In 2017
Nogob	Segeg	Female	120	404	150	344	90	1,108	299			
<b>Nogob Total</b>			<b>4,267</b>	<b>8,216</b>	<b>4,159</b>	<b>7,380</b>	<b>2,319</b>	<b>26,341</b>	<b>7,934</b>			
Shabelle	Abaqaro	Male	40	105	45	65	50	305	100	01-Feb-17	Drought	In 2017
Shabelle	Abaqaro	Female	65	105	55	70	55	350	100			
Shabelle	Adadle	Male	87	123	51	80	65	406	145	04-Jan-17	Drought	In 2017
Shabelle	Adadle	Female	51	123	65	116	87	442	145			
Shabelle	Adadle	Male	773	1,045	566	799	910	4,093	1,467	05-Jan-17	Drought	In 2017
Shabelle	Adadle	Female	830	1,693	649	1,068	797	5,037	1467			
Shabelle	Adadle	Male	69	69	52	86	58	334	115	07-Jan-17	Drought	In 2017
Shabelle	Adadle	Female	63	86	63	81	81	374	115			
Shabelle	Adadle	Male	29	33	36	39	39	176	65	09-Jan-17	Drought	In 2017
Shabelle	Adadle	Female	36	59	33	46	36	210	65			
Shabelle	Adadle	Male	69	75	75	75	50	344	125	05-May-17	Drought	In 2017
Shabelle	Adadle	Female	63	113	63	100	69	408	125			
Shabelle	Adadle	Male	64	104	40	69	35	312	99	14-Jun-17	Drought	In 2017
Shabelle	Adadle	Female	54	99	50	69	64	336	99			
Shabelle	Adadle	Male	102	119	77	111	77	486	170	24-Jun-17	Drought	In 2017
Shabelle	Adadle	Female	111	111	68	128	85	503	170			
Shabelle	Berano	Male	137	272	129	202	141	881	280	05-Jan-17	Drought	In 2017
Shabelle	Berano	Female	137	269	135	232	124	897	280			
Shabelle	Denan	Male	368	481	343	430	338	1,960	633	05-Jan-17	Drought	In 2017
Shabelle	Denan	Female	350	511	318	454	356	1,989	633			
Shabelle	Denan	Male	126	108	63	117	99	513	180	05-Apr-17	Drought	In 2017
Shabelle	Denan	Female	99	135	63	144	72	513	180			
Shabelle	Denan	Male	45	69	57	65	45	281	81	01-May-17	Drought	In 2017
Shabelle	Denan	Female	45	65	32	57	45	244	81			
Shabelle	East Imi	Male	87	131	65	87	80	450	145	05-Jan-17	Drought	In 2017



International Organization for Migration (IOM)

The UN Migration Agency

**ANNEX I : INTERNAL DISPLACEMENTS IN SOMALI REGION AS OF DECEMBER 2017**

Zone	Woreda	Sex	Age Groups					Total	HHs	Site Open Date	Cause	Duration
			Infants (0-4 y)	Children (5-14 y)	Youth (15-17 y)	Adults (18-59 y)	Elderly (60 +y)					
Shabelle	East Imi	Female	73	116	73	109	80	451	145			
Shabelle	East Imi	Male	81	135	108	90	90	504	180	07-Jan-17	Drought	In 2017
Shabelle	East Imi	Female	108	135	108	135	99	585	180			
Shabelle	Elele	Male	115	204	140	153	128	740	255	05-Jan-17	Drought	In 2017
Shabelle	Elele	Female	166	191	128	179	140	804	255			
Shabelle	Gode	Male	216	326	168	277	199	1,186	344	05-Jan-17	Drought	In 2017
Shabelle	Gode	Female	222	354	172	242	180	1,170	344			
Shabelle	Kelafo	Male	140	224	131	203	117	815	260	05-Jan-17	Drought	In 2017
Shabelle	Kelafo	Female	119	267	109	204	155	854	260			
Shabelle	Kelafo	Male	309	419	287	375	154	1,544	441	01-Jun-17	Drought	In 2017
Shabelle	Kelafo	Female	309	728	419	375	154	1,985	441			
<b>Shabelle Total</b>			<b>5,758</b>	<b>9,202</b>	<b>5,036</b>	<b>7,132</b>	<b>5,354</b>	<b>32,482</b>	<b>10,170</b>			
Siti	Afdem	Male	151	248	227	205	43	874	216	01-Jan-15	Drought	Before 2016
Siti	Afdem	Female	140	270	173	227	22	832	216			
Siti	Afdem	Male	225	435	306	354	32	1,352	322	08-Feb-15	Drought	Before 2016
Siti	Afdem	Female	177	370	290	338	-	1,175	322			
Siti	Afdem	Male	107	124	140	140	50	561	165	10-Apr-15	Drought	Before 2016
Siti	Afdem	Female	132	124	91	165	17	529	165			
Siti	Afdem	Male	60	131	60	101	8	360	75	06-Jun-15	Drought	Before 2016
Siti	Afdem	Female	49	79	49	90	8	275	75			
Siti	Afdem	Male	265	441	282	335	35	1,358	353	02-Aug-15	Drought	Before 2016
Siti	Afdem	Female	229	388	265	406	18	1,306	353			
Siti	Afdem	Male	92	265	174	210	18	759	183	09-Jan-16	Drought	During 2016
Siti	Afdem	Female	101	220	92	220	9	642	183			
Siti	Erer	Male	296	630	197	394	39	1,556	394	01-Aug-14	Drought	Before 2016
Siti	Erer	Female	335	394	138	394	79	1,340	394			
Siti	Erer	Male	302	409	323	409	43	1,486	431	05-Mar-15	Drought	Before 2016
Siti	Erer	Female	259	409	216	409	22	1,315	431			
Siti	Erer	Male	1,404	1,685	883	1,525	161	5,658	1,605	01-Apr-15	Drought	Before 2016
Siti	Erer	Female	1,324	1,244	642	1,605	120	4,935	1,605			
Siti	Gablalu	Male	127	219	173	265	35	819	230	10-Feb-15	Drought	Before 2016
Siti	Gablalu	Female	138	265	127	242	23	795	230			
Siti	Gablalu	Male	626	915	674	867	337	3,419	963	01-Aug-15	Drought	Before 2016
Siti	Gablalu	Female	433	530	770	915	96	2,744	963			
Siti	Gablalu	Male	647	1,351	873	1,182	169	4,222	1,126	08-Aug-15	Drought	Before 2016
Siti	Gablalu	Female	676	1,154	563	1,182	84	3,659	1,126			
Siti	Gota-Biki	Male	52	67	63	70	15	267	74	01-Apr-15	Drought	Before 2016
Siti	Gota-Biki	Female	59	85	44	70	4	262	74			
Siti	Gota-Biki	Male	104	145	110	131	21	511	138	20-Apr-15	Drought	Before 2016
Siti	Gota-Biki	Female	110	152	104	152	21	539	138			
Siti	Hadgalo	Male	318	296	272	460	48	1,394	472	10-Mar-15	Drought	Before 2016
Siti	Hadgalo	Female	365	330	331	448	24	1,498	472			
Siti	Miesso	Male	852	758	568	900	237	3,315	947	28-Aug-14	Conflict	Before 2016
Siti	Miesso	Female	379	947	710	900	47	2,983	947			





**ANNEX I : INTERNAL DISPLACEMENTS IN SOMALI REGION AS OF DECEMBER 2017**

Zone	Woreda	Sex	Age Groups					Total	HHs	Site Open Date	Cause	Duration
			Infants (0-4 y)	Children (5-14 y)	Youth (15-17 y)	Adults (18-59 y)	Elderly (60 +y)					
Siti	Miesso	Male	300	280	260	400	-	1,240	400	02-Jan-15	Conflict	Before 2016
Siti	Miesso	Female	280	280	260	400	-	1,220	400	02-Jan-15	Conflict	Before 2016
Siti	Miesso	Male	379	303	278	480	76	1,516	505	07-Jan-15	Conflict	Before 2016
Siti	Miesso	Female	303	354	379	505	25	1,566	505	07-Jan-15	Conflict	Before 2016
Siti	Miesso	Male	408	375	526	577	94	1,980	610	01-Feb-15	Drought	Before 2016
Siti	Miesso	Female	408	458	333	580	78	1,857	610	01-Feb-15	Drought	Before 2016
Siti	Miesso	Male	263	280	315	315	53	1,226	350	04-Mar-15	Drought	Before 2016
Siti	Miesso	Female	175	210	210	350	18	963	350	04-Mar-15	Drought	Before 2016
Siti	Miesso	Male	155	155	91	164	18	583	182	06-Apr-15	Drought	Before 2016
Siti	Miesso	Female	109	127	100	182	-	518	182	06-Apr-15	Drought	Before 2016
Siti	Miesso	Male	282	229	246	299	70	1,126	352	07-Apr-15	Drought	Before 2016
Siti	Miesso	Female	246	246	282	352	18	1,144	352	07-Apr-15	Drought	Before 2016
Siti	Miesso	Male	342	261	302	302	121	1,328	402	10-Apr-15	Drought	Before 2016
Siti	Miesso	Female	342	302	342	362	40	1,388	402	10-Apr-15	Drought	Before 2016
Siti	Miesso	Male	281	342	221	322	101	1,267	402	01-Aug-15	Drought	Before 2016
Siti	Miesso	Female	241	201	241	362	40	1,085	402	01-Aug-15	Drought	Before 2016
Siti	Miesso	Male	56	48	33	59	15	211	74	01-Sep-15	Drought	Before 2016
Siti	Miesso	Female	48	52	52	74	-	226	74	01-Sep-15	Drought	Before 2016
Siti	Miesso	Male	128	111	94	171	43	547	171	17-Feb-17	Conflict	In 2017
Siti	Miesso	Female	103	128	128	171	9	539	171	17-Feb-17	Conflict	In 2017
Siti	Miesso	Male	70	129	64	129	6	398	117	13-Aug-17	Conflict	In 2017
Siti	Miesso	Female	59	117	82	123	23	404	117	13-Aug-17	Conflict	In 2017
Siti	Miesso	Male	229	686	533	508	-	1,956	508	09-Sep-17	Conflict	In 2017
Siti	Miesso	Female	203	533	254	483	127	1,600	508	09-Sep-17	Conflict	In 2017
Siti	Shinile	Male	358	330	303	491	110	1,592	550	10-Aug-15	Drought	Before 2016
Siti	Shinile	Female	358	385	358	550	28	1,679	550	10-Aug-15	Drought	Before 2016
Siti	Shinile	Male	149	330	281	314	33	1,107	330	16-Oct-17	Conflict	In 2017
Siti	Shinile	Female	198	363	281	330	17	1,189	330	16-Oct-17	Conflict	In 2017
<b>Siti Total</b>			<b>17,007</b>	<b>22,695</b>	<b>16,779</b>	<b>24,666</b>	<b>3,048</b>	<b>84,195</b>	<b>25,294</b>			
<b>Grand Total</b>			<b>174,168</b>	<b>199,535</b>	<b>137,110</b>	<b>220,084</b>	<b>76,016</b>	<b>806,913</b>	<b>237,438</b>			

**Disclaimer:** Age and gender disaggregation for the site is extrapolated using a demographic calculator tool based on the age range and sex of the household members of 20 randomly selected households from the site.

**Displacement Tracking Matrix (DTM) conducted in collaboration with Danish Refugee Council (DRC)**



DTM made possible thanks to the European Civil Protection and Humanitarian Aid Operations (ECHO), the Ethiopian Humanitarian Fund (EHF), the Office of United States Foreign Disaster Assistance (OFDA) and the Swiss agency for Development and Cooperation (SDC).

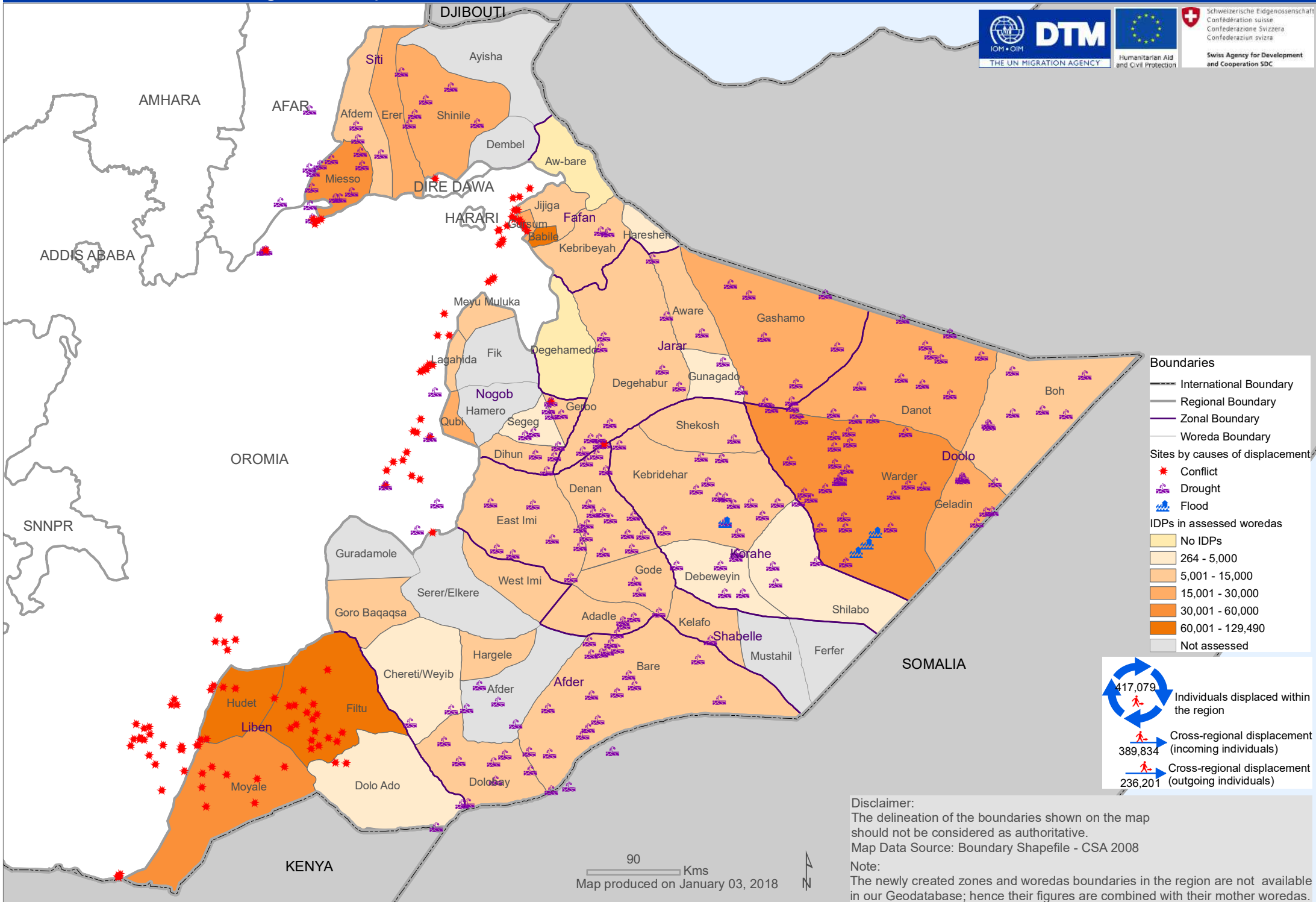
*The opinions expressed in this report are those of the authors and do not necessarily*



International Organization for Migration (IOM)  
The UN Migration Agency

## ANNEX I : INTERNAL DISPLACEMENTS IN SOMALI REGION AS OF DECEMBER 2017

Zone	Woreda	Sex	Age Groups					Total	HHs	Site Open Date	Cause	Duration
			Infants (0-4 y)	Children (5-14 y)	Youth (15-17 y)	Adults (18-59 y)	Elderly (60 +y)					
<i>The opinions expressed in this report are those of the authors and do not necessarily reflect the views of the Office of United States Foreign Disaster Assistance.</i>												



**Boundaries**

- International Boundary
- Regional Boundary
- Zonal Boundary
- Woreda Boundary

**Sites by causes of displacement**

- Conflict
- Drought
- Flood

**IDPs in assessed woredas**

- No IDPs
- 264 - 5,000
- 5,001 - 15,000
- 15,001 - 30,000
- 30,001 - 60,000
- 60,001 - 129,490
- Not assessed

417,079 Individuals displaced within the region

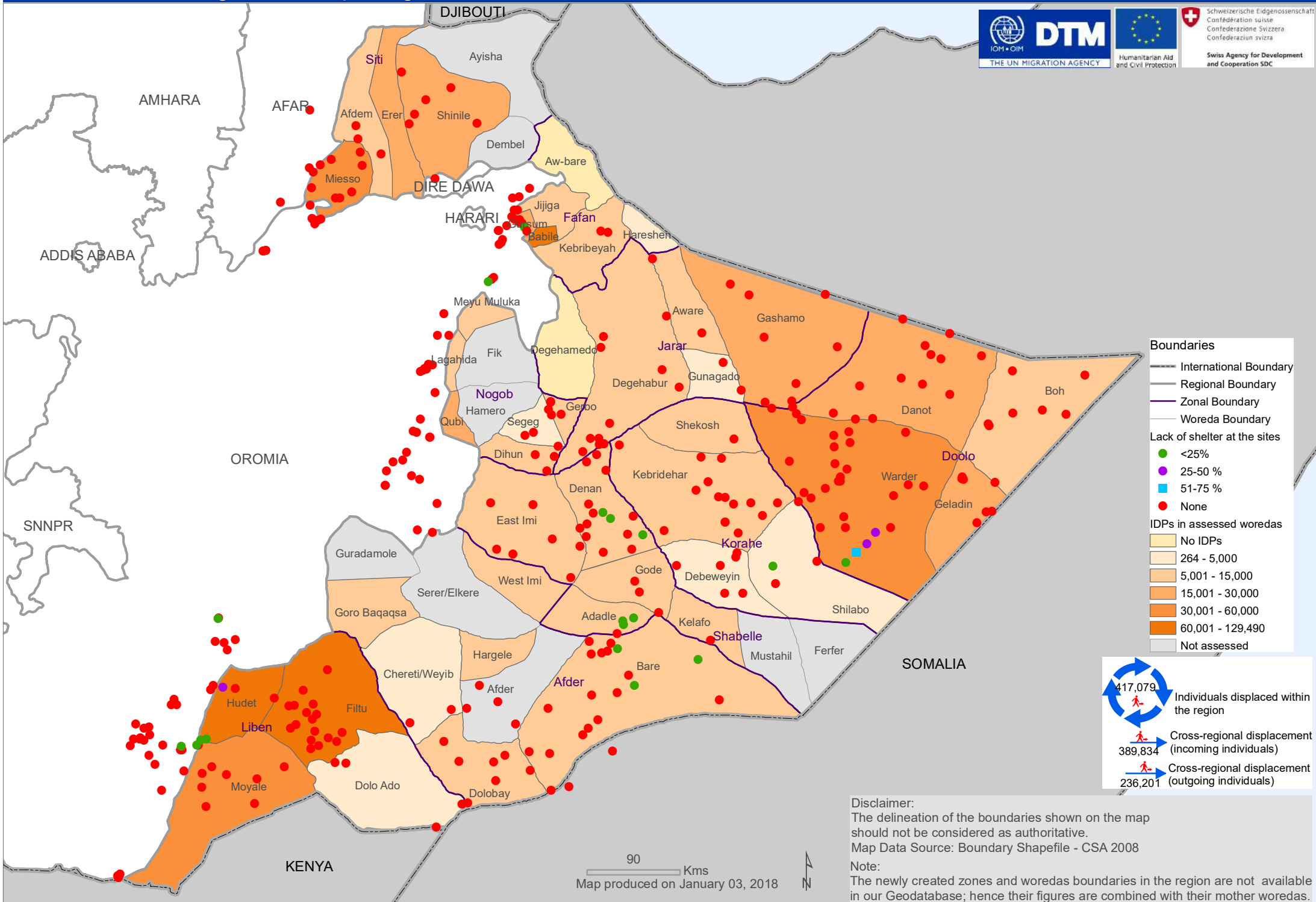
389,834 Cross-regional displacement (incoming individuals)

236,201 Cross-regional displacement (outgoing individuals)

**Disclaimer:**  
The delineation of the boundaries shown on the map should not be considered as authoritative.  
Map Data Source: Boundary Shapefile - CSA 2008

**Note:**  
The newly created zones and woredas boundaries in the region are not available in our Geodatabase; hence their figures are combined with their mother woredas.

90 Kms  
Map produced on January 03, 2018



**Boundaries**

- International Boundary
- Regional Boundary
- Zonal Boundary
- Woreda Boundary

- Lack of shelter at the sites**
- <25%
  - 25-50 %
  - 51-75 %
  - None

- IDPs in assessed woredas**
- No IDPs
  - 264 - 5,000
  - 5,001 - 15,000
  - 15,001 - 30,000
  - 30,001 - 60,000
  - 60,001 - 129,490
  - Not assessed

417,079 Individuals displaced within the region

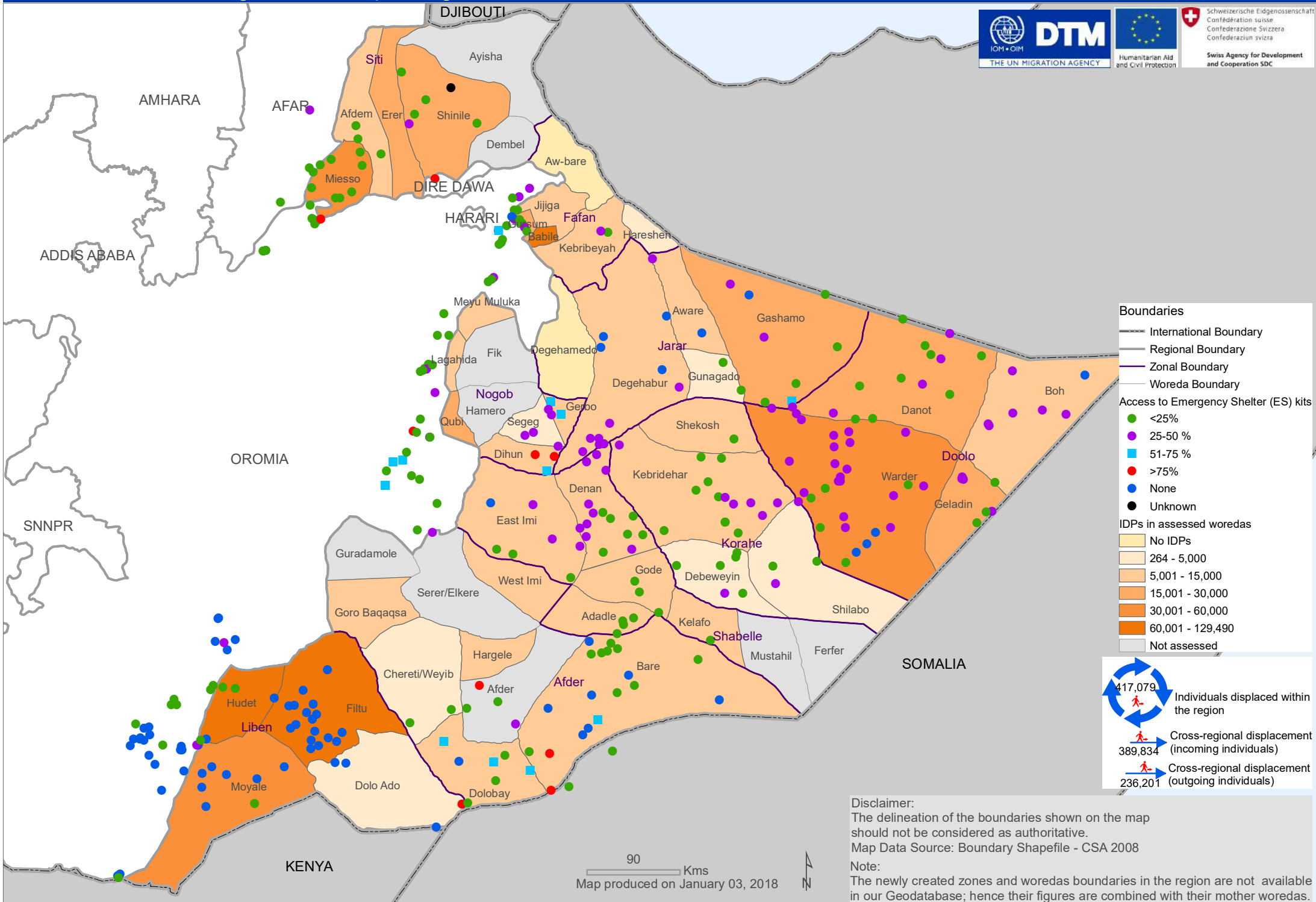
389,834 Cross-regional displacement (incoming individuals)

236,201 Cross-regional displacement (outgoing individuals)

**Disclaimer:**  
 The delineation of the boundaries shown on the map should not be considered as authoritative.  
 Map Data Source: Boundary Shapefile - CSA 2008

**Note:**  
 The newly created zones and woredas boundaries in the region are not available in our Geodatabase; hence their figures are combined with their mother woredas.

90 Kms  
 Map produced on January 03, 2018



**Boundaries**

- International Boundary
- Regional Boundary
- Zonal Boundary
- Woreda Boundary

**Access to Emergency Shelter (ES) kits**

- <25%
- 25-50 %
- 51-75 %
- >75%
- None
- Unknown

**IDPs in assessed woredas**

- No IDPs
- 264 - 5,000
- 5,001 - 15,000
- 15,001 - 30,000
- 30,001 - 60,000
- 60,001 - 129,490
- Not assessed

417,079 Individuals displaced within the region

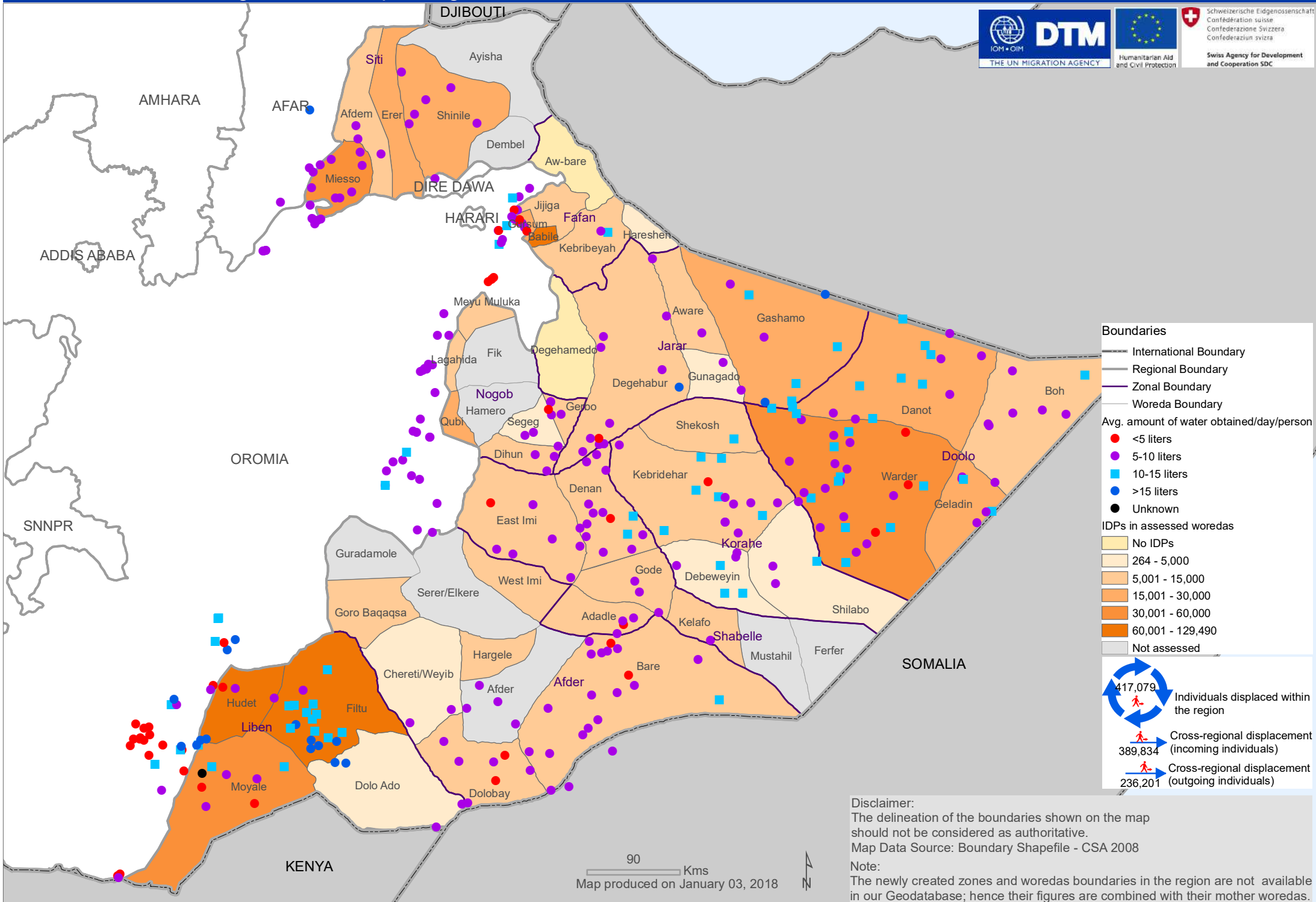
389,834 Cross-regional displacement (incoming individuals)

236,201 Cross-regional displacement (outgoing individuals)

**Disclaimer:**  
The delineation of the boundaries shown on the map should not be considered as authoritative.  
Map Data Source: Boundary Shapefile - CSA 2008

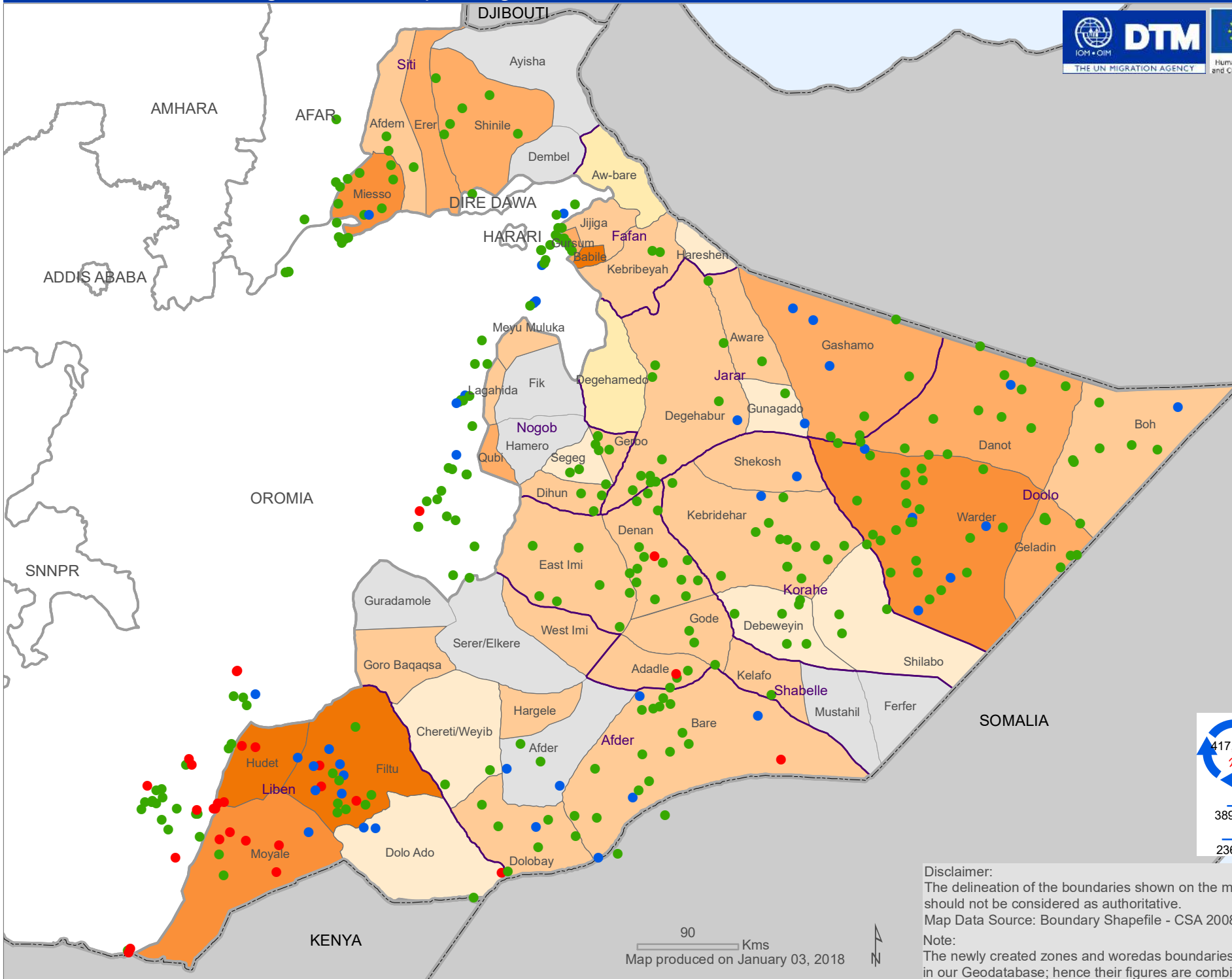
**Note:**  
The newly created zones and woredas boundaries in the region are not available in our Geodatabase; hence their figures are combined with their mother woredas.

90 Kms  
Map produced on January 03, 2018



90 Kms  
Map produced on January 03, 2018





**Boundaries**

- International Boundary
- Regional Boundary
- Zonal Boundary
- Woreda Boundary

**Access to Food**

- Yes, On Site
- Yes, Offsite
- No

**IDPs in assessed woredas**

- No IDPs
- 264 - 5,000
- 5,001 - 15,000
- 15,001 - 30,000
- 30,001 - 60,000
- 60,001 - 129,490
- Not assessed

417,079 Individuals displaced within the region

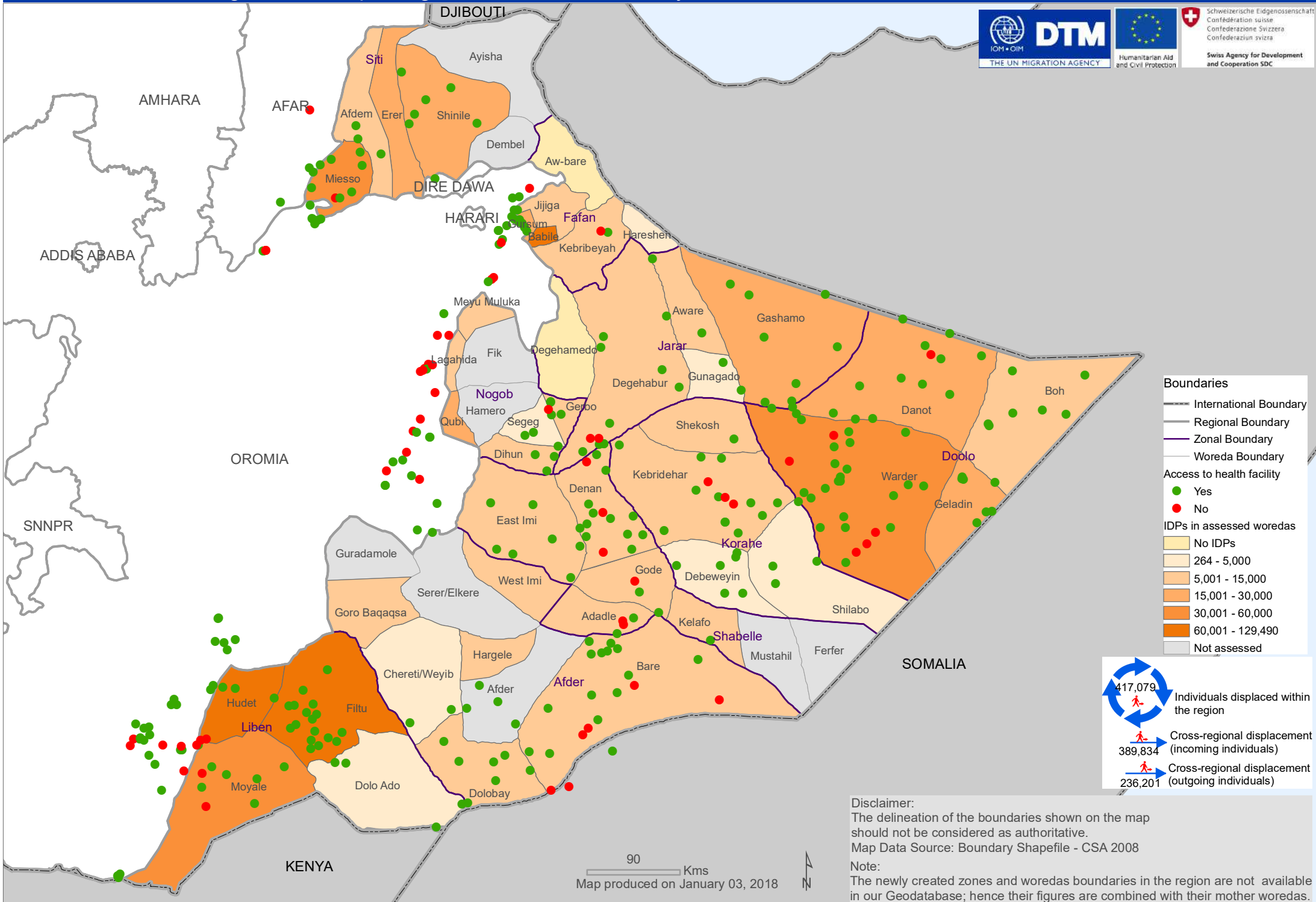
389,834 Cross-regional displacement (incoming individuals)

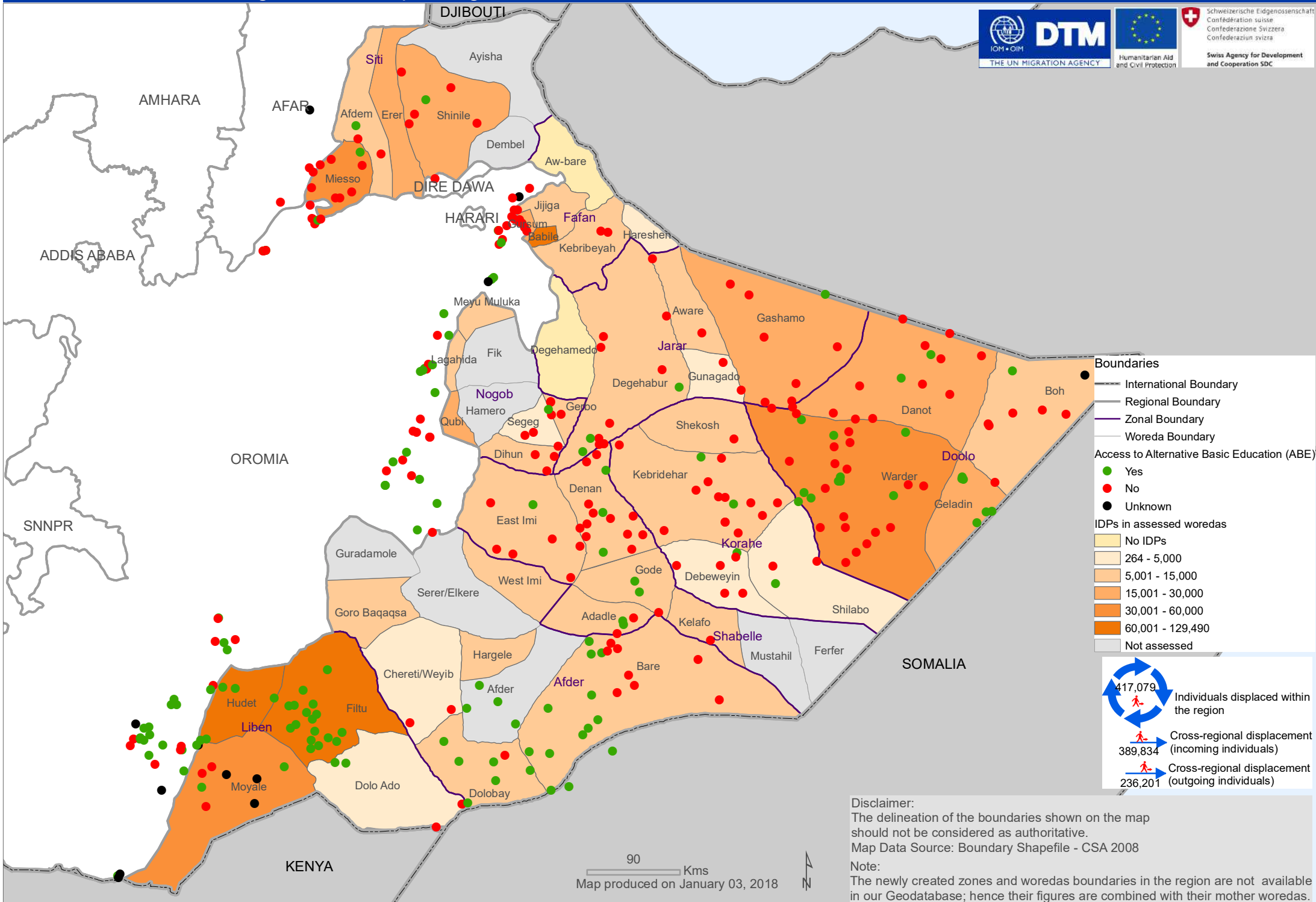
236,201 Cross-regional displacement (outgoing individuals)

**Disclaimer:**  
 The delineation of the boundaries shown on the map should not be considered as authoritative.  
 Map Data Source: Boundary Shapefile - CSA 2008

**Note:**  
 The newly created zones and woredas boundaries in the region are not available in our Geodatabase; hence their figures are combined with their mother woredas.

90 Kms  
 Map produced on January 03, 2018





**Boundaries**

- International Boundary
- Regional Boundary
- Zonal Boundary
- Woreda Boundary

**Access to Alternative Basic Education (ABE)**

- Yes
- No
- Unknown

**IDPs in assessed woredas**

- No IDPs
- 264 - 5,000
- 5,001 - 15,000
- 15,001 - 30,000
- 30,001 - 60,000
- 60,001 - 129,490
- Not assessed

417,079 Individuals displaced within the region

389,834 Cross-regional displacement (incoming individuals)

236,201 Cross-regional displacement (outgoing individuals)

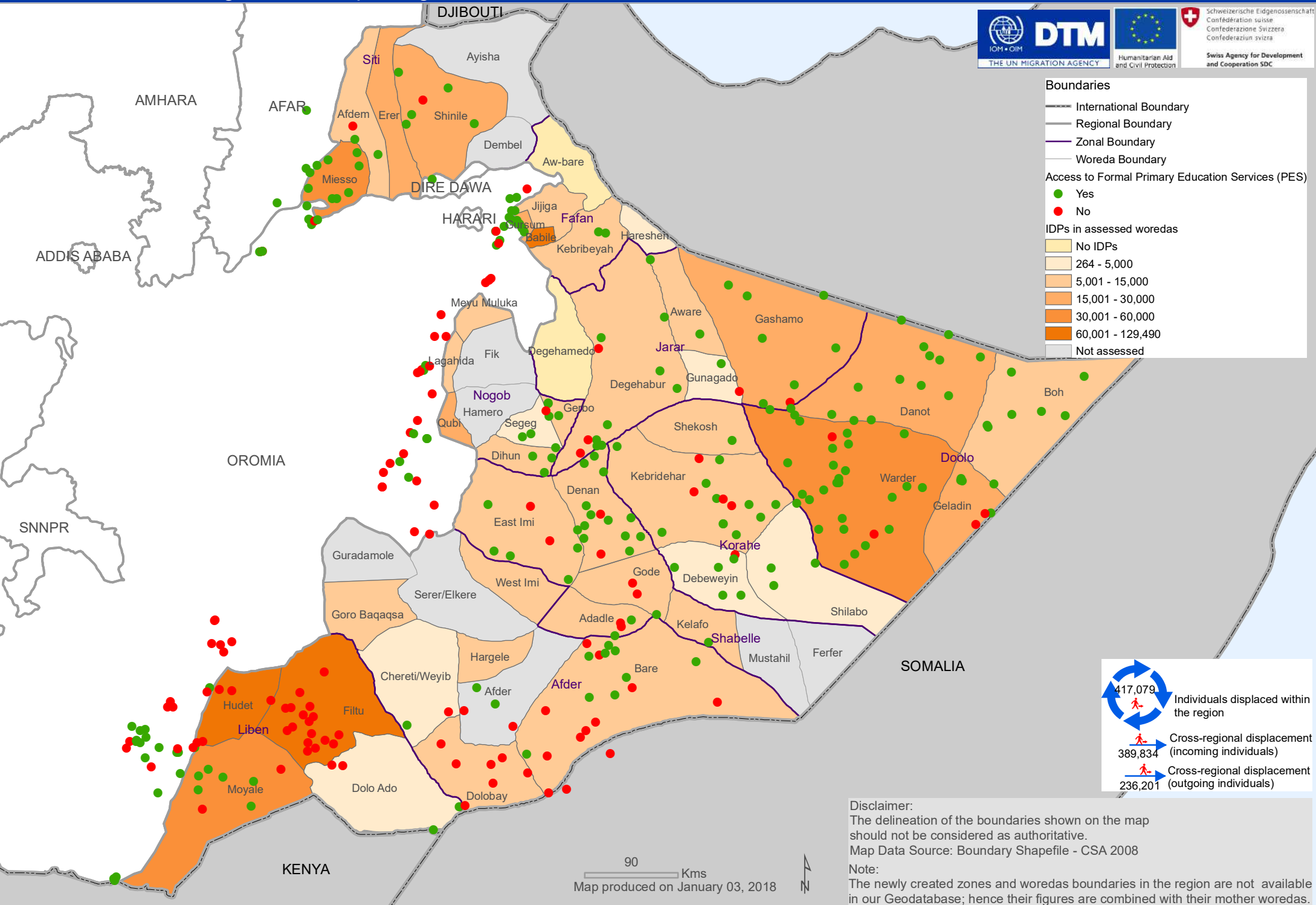
**Disclaimer:**  
The delineation of the boundaries shown on the map should not be considered as authoritative.  
Map Data Source: Boundary Shapefile - CSA 2008

**Note:**  
The newly created zones and woredas boundaries in the region are not available in our Geodatabase; hence their figures are combined with their mother woredas.

90 Kms  
Map produced on January 03, 2018



Schweizerische Eidgenossenschaft  
Confédération suisse  
Confederazione Svizzera  
Confederaziun svizra  
  
Swiss Agency for Development and Cooperation SDC



**Boundaries**

- International Boundary
- Regional Boundary
- Zonal Boundary
- Woreda Boundary

**Access to Formal Primary Education Services (PES)**

- Yes (Green dot)
- No (Red dot)

**IDPs in assessed woredas**

- No IDPs
- 264 - 5,000
- 5,001 - 15,000
- 15,001 - 30,000
- 30,001 - 60,000
- 60,001 - 129,490
- Not assessed

417,079 Individuals displaced within the region

389,834 Cross-regional displacement (incoming individuals)

236,201 Cross-regional displacement (outgoing individuals)

**Disclaimer:**  
The delineation of the boundaries shown on the map should not be considered as authoritative.  
Map Data Source: Boundary Shapefile - CSA 2008

**Note:**  
The newly created zones and woredas boundaries in the region are not available in our Geodatabase; hence their figures are combined with their mother woredas.

90 Kms  
Map produced on January 03, 2018