

DISPLACEMENT TRACKING MATRIX EMERGENCY TRACKING

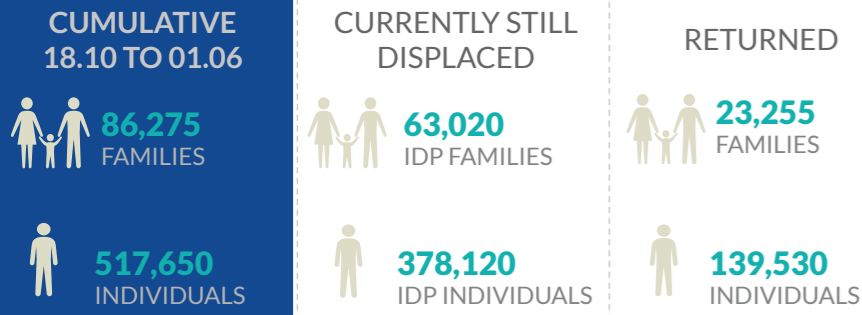
FACTSHEET #31 - MOSUL OPERATIONS FROM 17 OCTOBER TO 1 JUNE

The Emergency Tracking (ET) system is a crisis-based tool that aims at tracking sudden displacement or return movements triggered by specific crises. The ET figures reported on this portal are not cumulative of the all persons affected by the Mosul crisis thus far, rather the ET update provides only a snapshot of

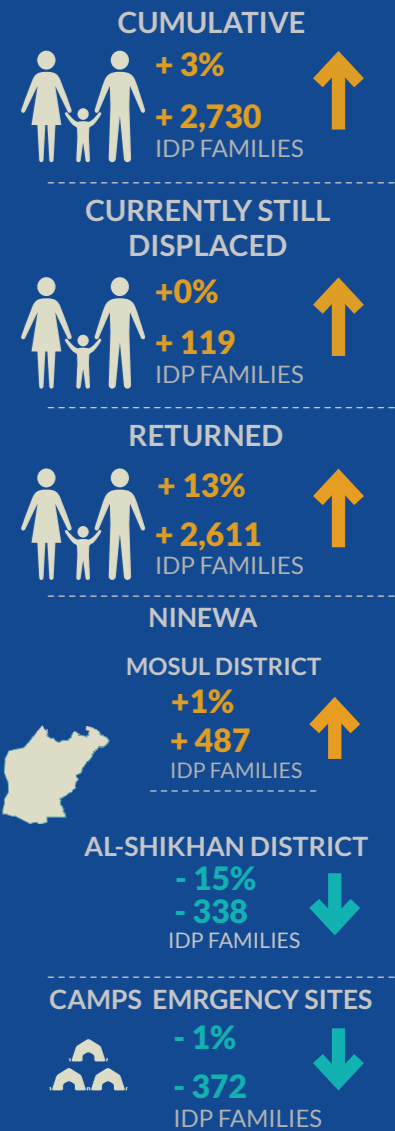
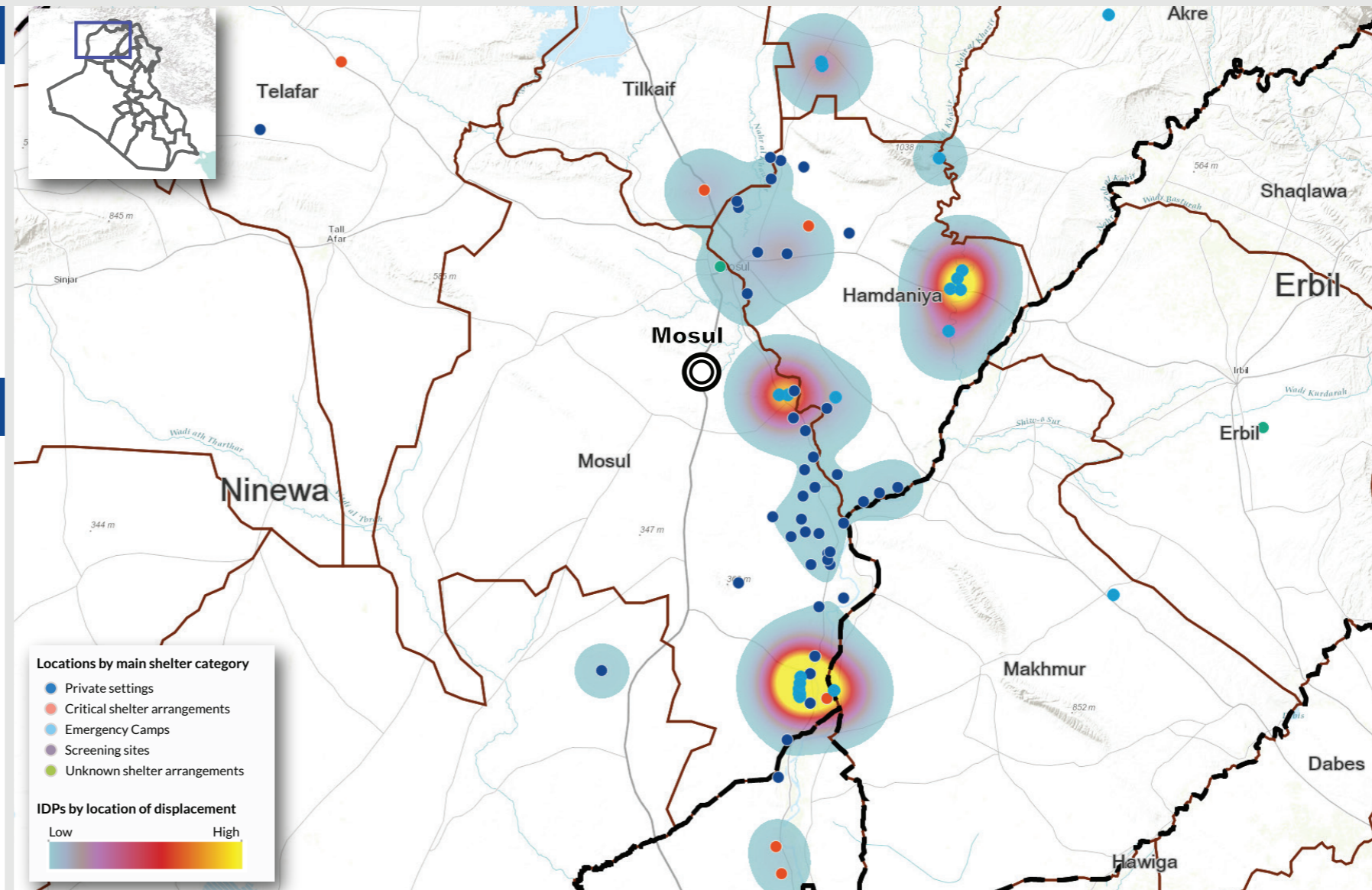
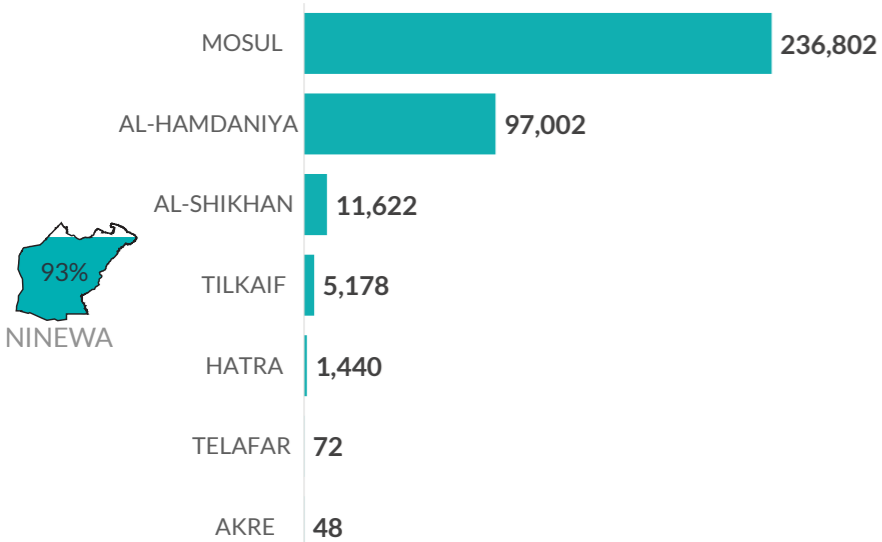
the current displacement situation for the indicated date. The data and information reported on this page are related solely to the displacement caused by the Mosul operations which started on 17 October 2016. Find more information at the Mosul Data Portal: <http://iraqdtm.iom.int/EmergencyTracking.aspx>



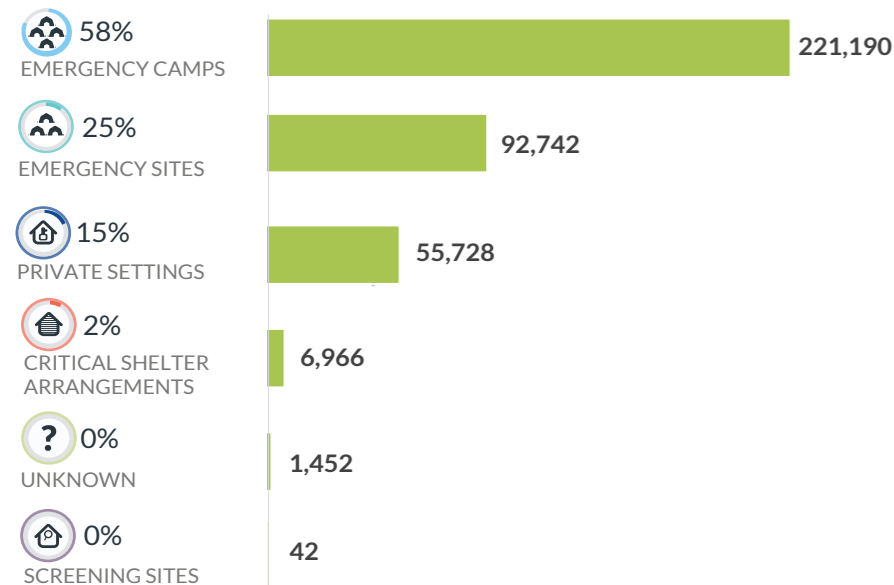
CUMULATIVE FIGURES



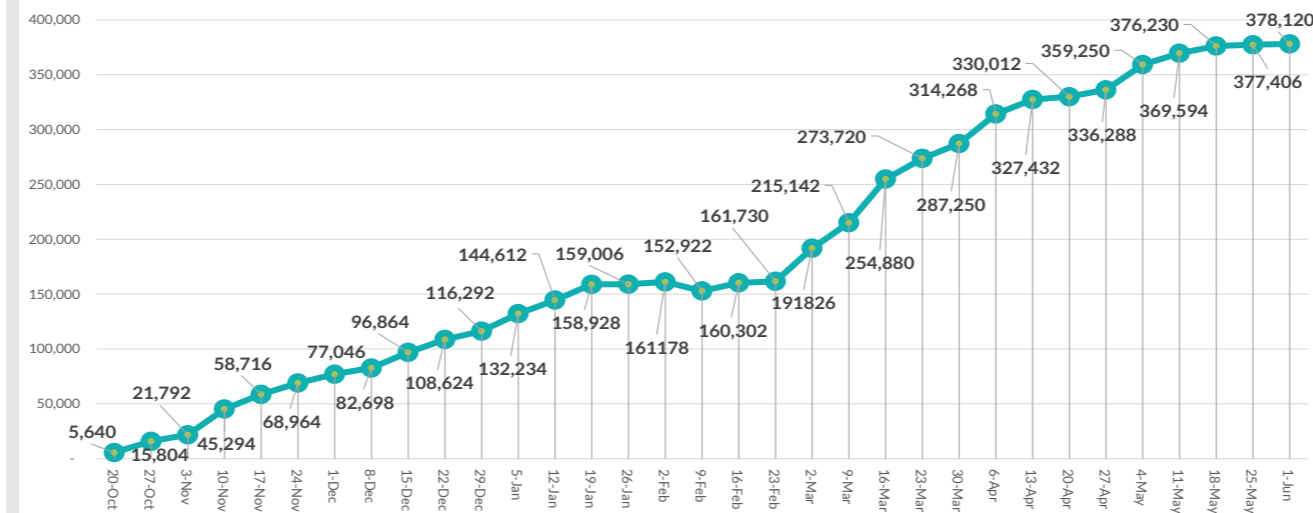
NUMBER OF IDPS BY MAIN DISTRICT OF DISPLACEMENT



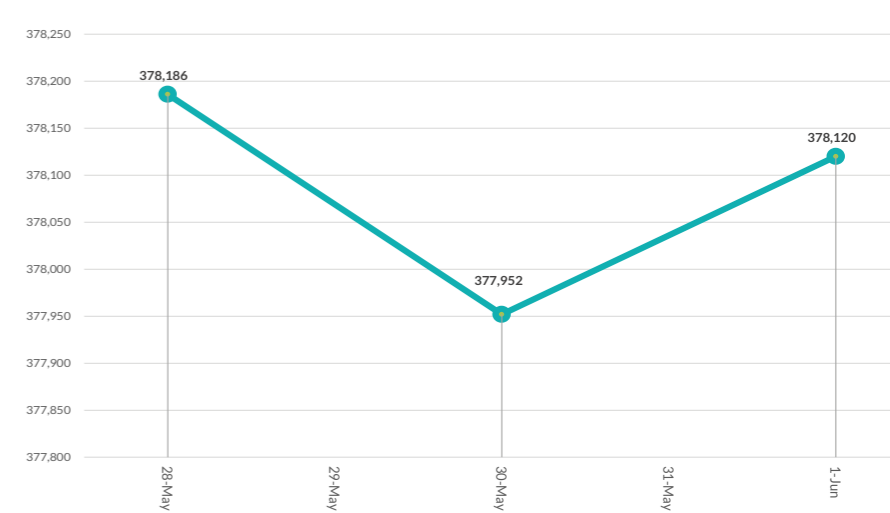
NUMBER OF IDPS BY SHELTER CATEGORY



DISPLACEMENT TIMELINE FROM 17 OCTOBER: WEEKLY UPDATES



LAST WEEK DAILY UPDATES (FROM 21.05 TO 1.06)



All information collected on IDPs and returnees is included in the Emergency Tracking (ET) database once the locations of displacement or return have been identified and validated. The identification of the locations of displacement of the new arrivals requires some time, especially in out-of-camp locations. As some areas are not easily accessible, time is required between an actual population movement and its tracking and reporting.