

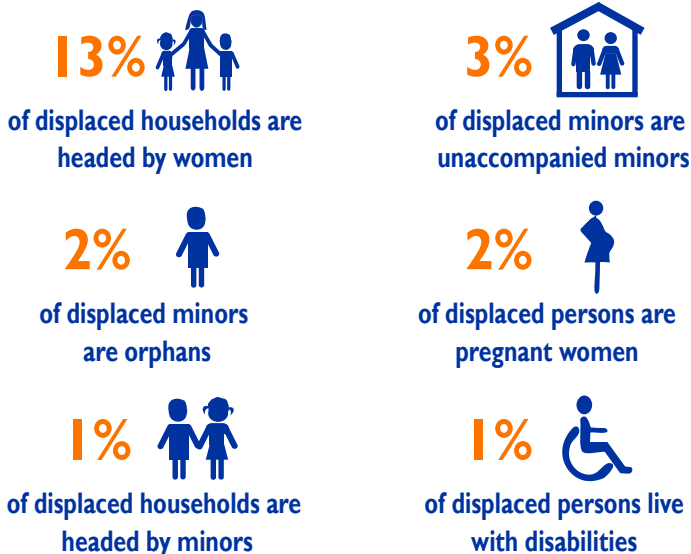


124,578 IDPs*

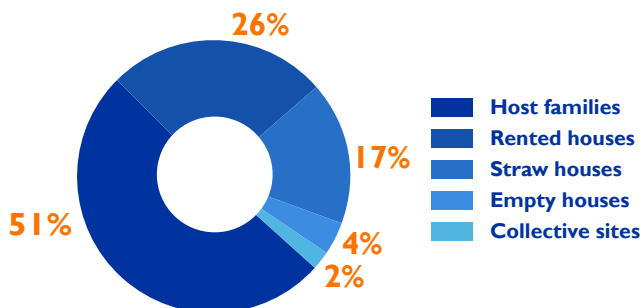
27,720 Displaced Households

*Internally Displaced Persons

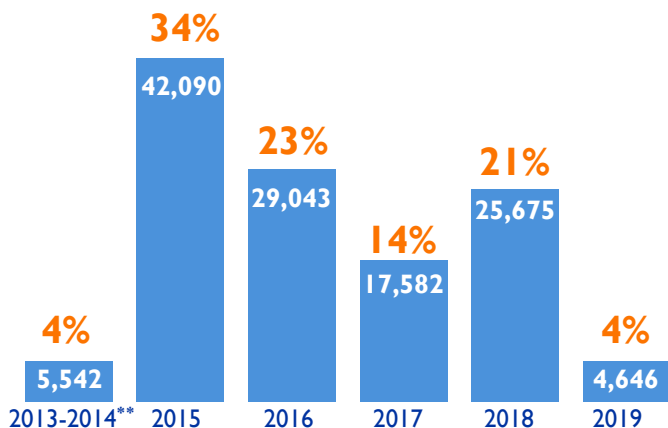
PARTICULARLY VULNERABLE GROUPS



ACCOMMODATION TYPES



PERIODS OF DISPLACEMENT*



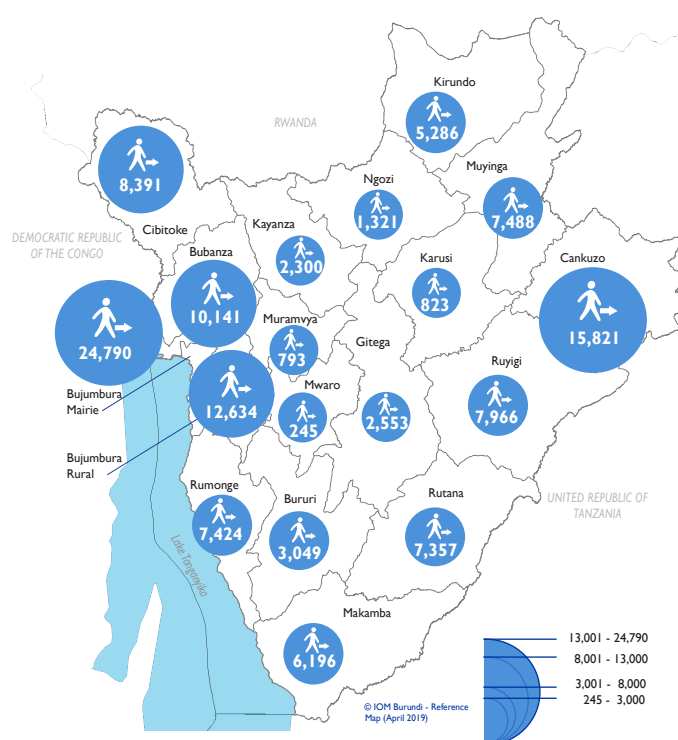
*Currently displaced IDPs

**Numbers of IDPs displaced in 2013-2014 are taken from December 2018 data

IDP DEMOGRAPHIC



PRESENCE OF IDPs BY PROVINCE



This map is for illustration purposes only. Names and boundaries on this map do not imply official endorsement or acceptance by IOM. Source: IOM, IGEBU

DISPLACEMENT REASONS*



* These percentages refer to data for IDPs displaced since 2015

DISPLACEMENT TRENDS

Number of IDPs present in Burundi

