

Data collection: October 2024

Overview

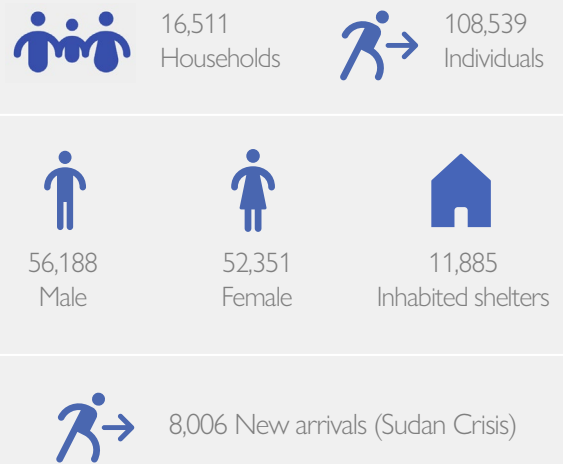
As of the end of October 2024, 137,389 individuals (31,019 households) are biometrically registered as active residents in the camp, representing a two per cent increase in registered individuals since January 2024 following the latest biometric registration maintenance in Bentiu IDP Camp.

Recognizing that there have been significant population changes since the last overall biometric registration / verification, IOM DTM conducts occasional population counts to monitor population dynamics and displacement trends. This exercise shows that the actual number of individuals currently living in Bentiu IDP Camp is lower than the registered total.

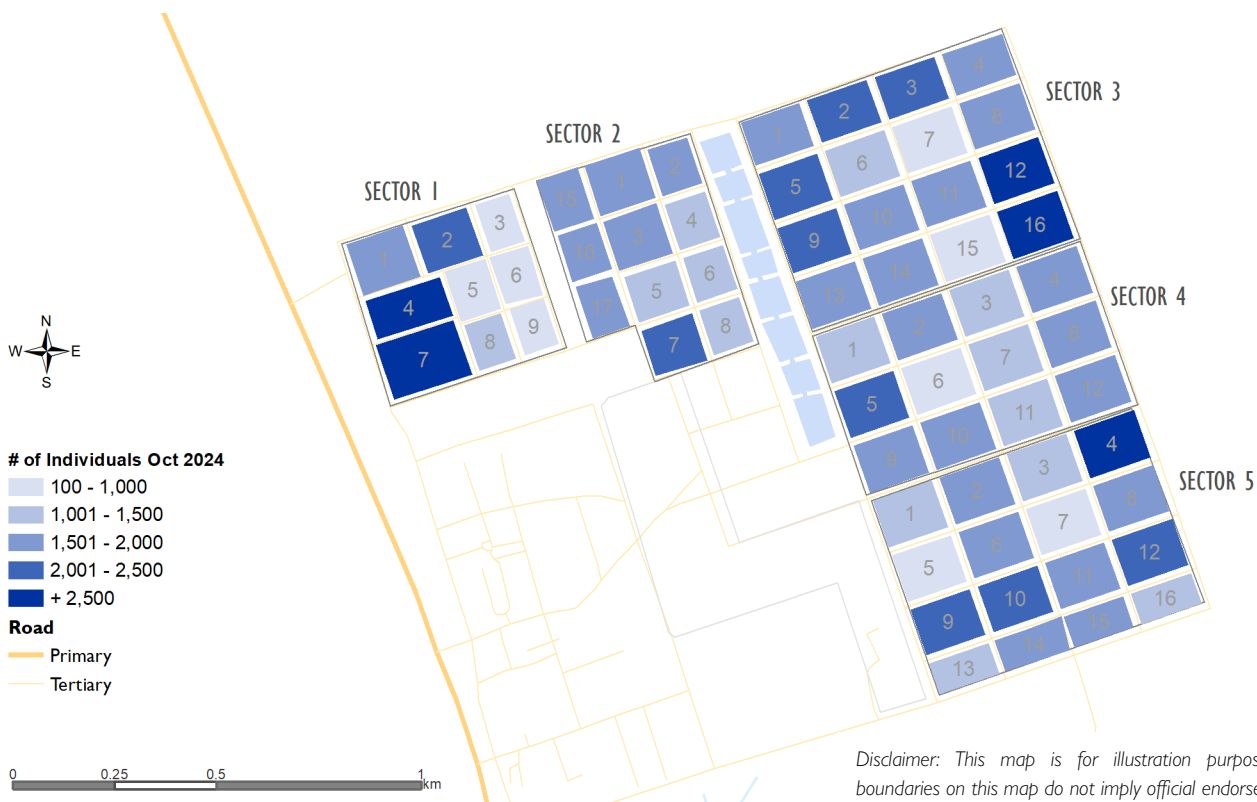
Population flows



Key Figures



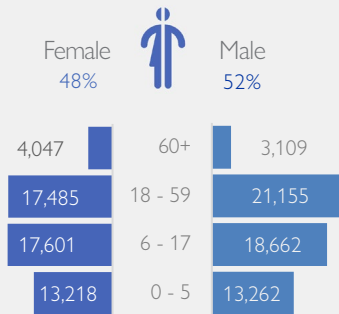
Map of block distribution



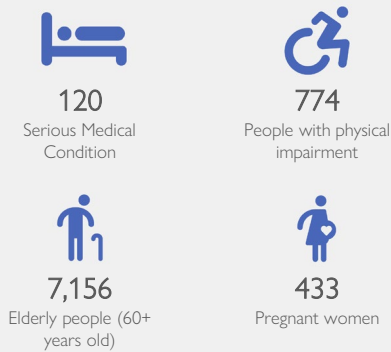
Disclaimer: This map is for illustration purposes only. Names and boundaries on this map do not imply official endorsement or acceptance by IOM.

Data collection: October 2024

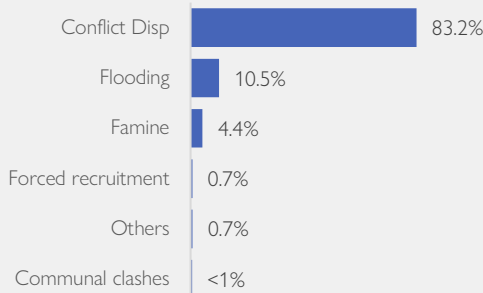
Demographics



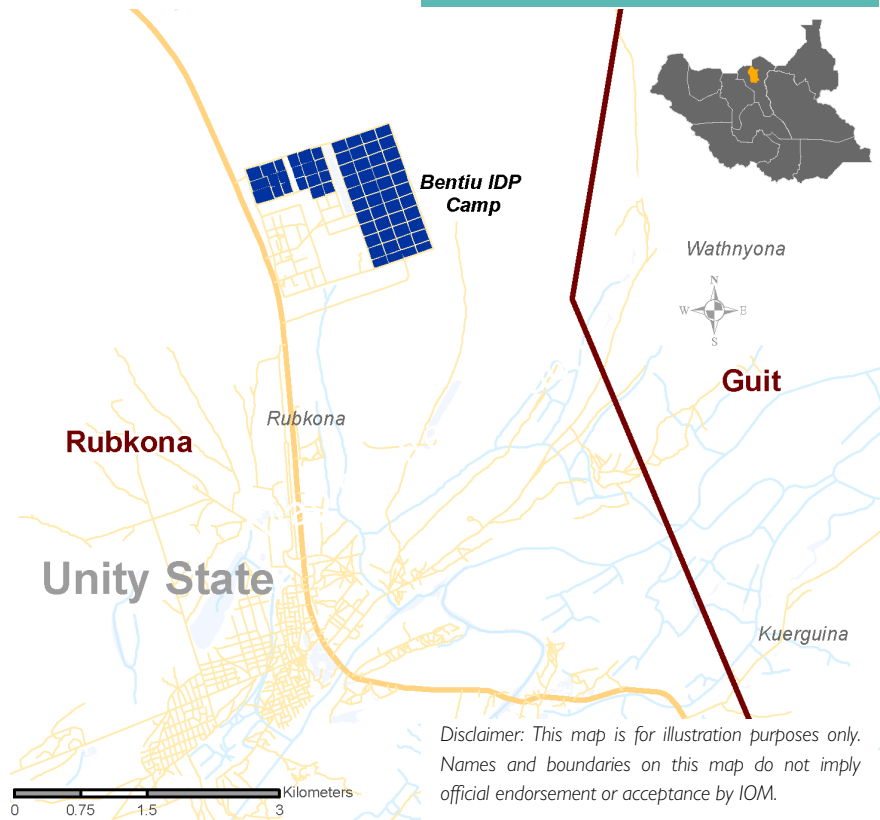
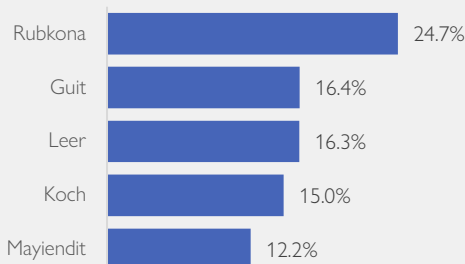
Reported vulnerabilities



Reasons for displacement



TOP 5 counties of habitual residence in Unity (99.9%)



Registration activities are essential for IOM's Displacement Tracking Matrix (DTM) partners to create beneficiary lists, which facilitate effective resource allocation, vulnerability targeting, and aid delivery. The IOM DTM in South Sudan has been instrumental in providing biometric registration and headcounts, prioritizing immediate information needs essential for guiding direct assistance to vulnerable populations at the local level. Registration data is captured by DTM-led teams through direct individual interviews conducted in target locations, typically with the heads of households. This method ensures that the data collected is accurate and representative of the household's needs.

As per the findings from the October 2024 population count, the Bentiu Internally Displaced Persons (IDP) camp population stands at 108,539 individuals (16,511 households) residing in 11,885 inhabited shelters, with an average of about nine individuals per shelter. This represents a two per cent increase from August 2024.

The slight increase in population is primarily attributed to individuals displaced by floods from counties within the state.

The blocks with the largest populations were recorded across the following sectors: Sector 1 Block 7 (4,450 individuals), Sector 5 Block 4 (3,232 individuals), Sector 3 Block 16 (2,825 individuals), Sector 1 Block 4 (2,813 individuals) and Sector 3 Block 12 (2,784 individuals). These figures highlight specific areas within the camp where population density is highest, which can help guide resource allocation and aid delivery more effectively.