

EMERGENCY EVENT TRACKING: Jabal Marrah, Central Darfur

UPDATE 1: 8 July 2020

Data collection: 20 June 2020

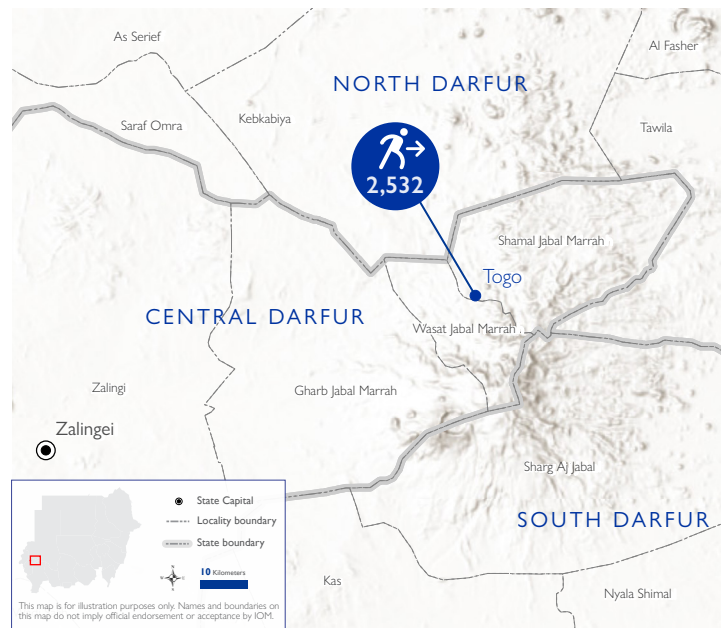
The DTM Emergency Event Tracking (EET) is deployed to track sudden displacement and population movements, provide more frequent updates on the scale of displacement and quantify the affected population when needed. As a subcomponent of the new Mobility Tracking methodology in Sudan ([Round One](#)), and activated on a need basis, EET utilises a broad network of key informants to capture best estimates of the affected population presence per location – a useful tool for humanitarian response planning and design.

Event Overview

2,532
IDP Individuals

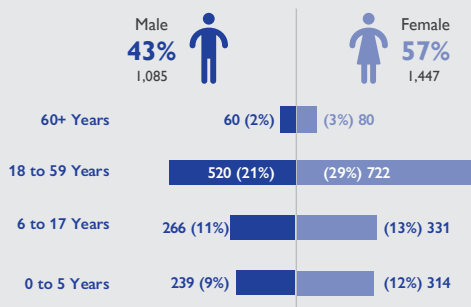
608
IDP Households

DTM teams activated EET to monitor the displacement of individuals affected by the violent clashes that erupted between the Mubarak Alduk and Salih Borsa factions of the SLA/AW in Wegi village, Central Darfur on 11 June 2020. Affected populations were displaced to Togo village, Golo locality in Jabal Marrah. The first EET update estimates a total number of 2,532 individuals (608 households) situated across Togo village, having arrived from 7 locations of origin.

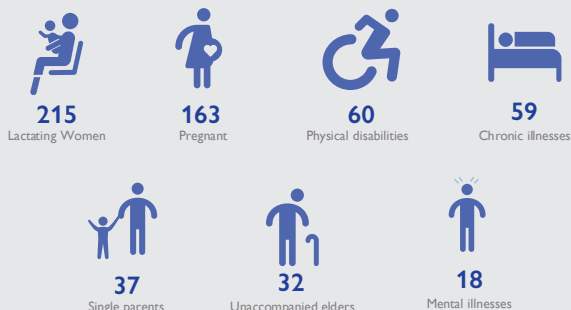


Location of Origin	# IDPs Individuals	# IDPs Households
Waji	816	205
Eyla	675	130
Daya	366	84
Fodigo	314	79
Daown	144	48
Kadal	143	42
Togo	74	20
Grand Total	2,532	608

Demographics

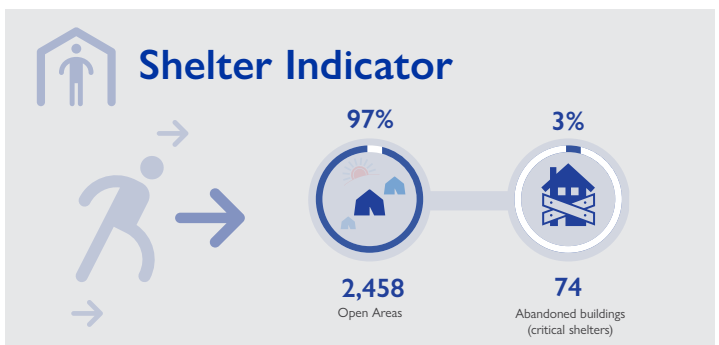


Vulnerabilities



Return Intention

Data collected through the return intention indicator suggests that 100% of the remaining IDPs intend to return to their locations of origin upon improvement of the security situation.



IOM DISCLAIMER

The opinions expressed in the report are those of the authors and do not necessarily reflect the views of the International Organization for Migration (IOM). The designations employed and the presentation of material throughout the report do not imply the expression of any opinion whatsoever on the part of IOM concerning the legal status of any country, territory, city or area, or of its authorities, or concerning its frontiers or boundaries.

IOM is committed to the principle that humane and orderly migration benefits migrants and society. As an intergovernmental organization, IOM acts with its partners in the international community to: assist in the meeting of operational challenges of migration; advance understanding of migration issues; encourage social and economic development through migration; and uphold the human dignity and well-being of migrants.