

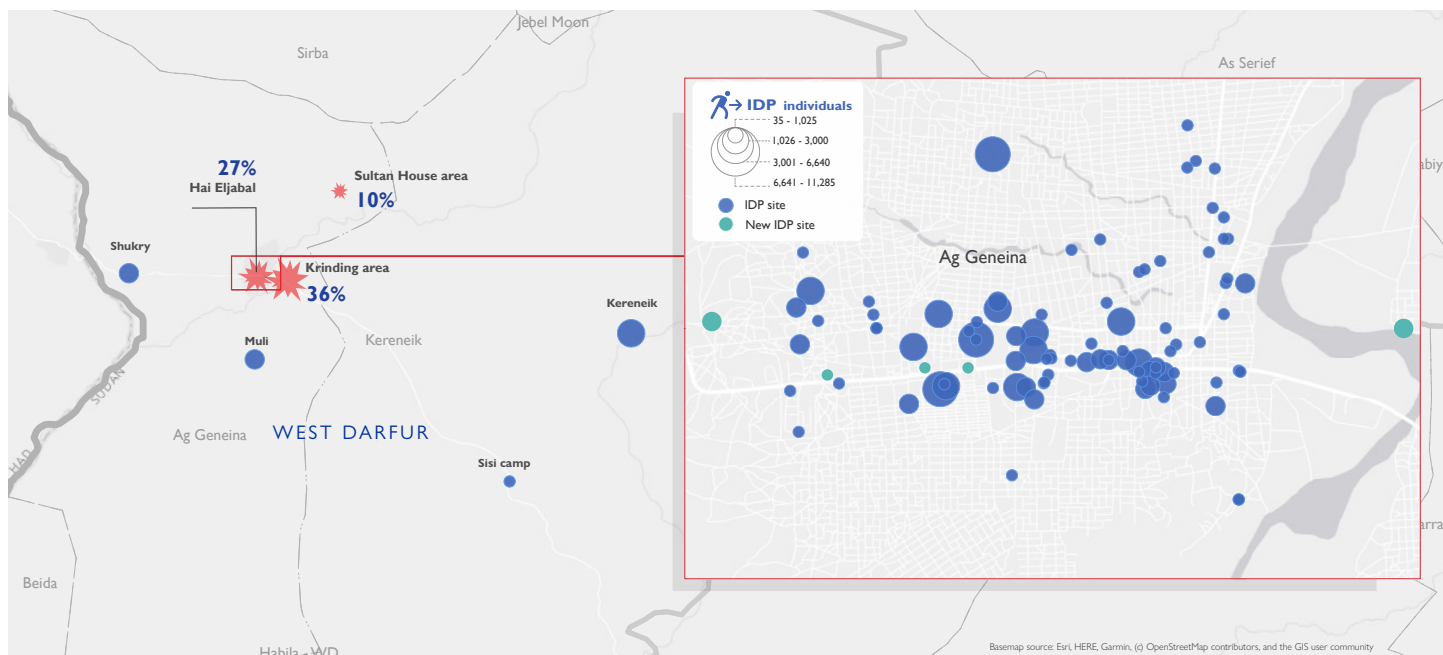
**EMERGENCY EVENT TRACKING**

Data collection: 8-9 May 2021

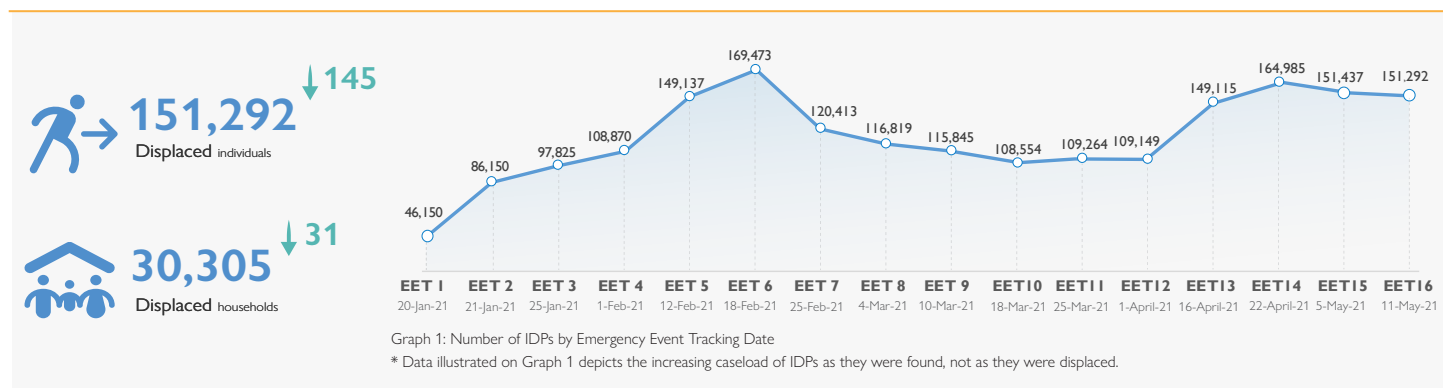
CONFLICT



The DTM Emergency Event Tracking (EET) is deployed to track sudden displacement and population movements, provide more frequent updates on the scale of displacement, and quantify the affected population when needed. As a subcomponent of the new Mobility Tracking methodology in Sudan ([Round One](#)), and activated on a need basis, EET utilises a broad network of key informants to capture best estimates of the affected population presence per location – a useful tool for humanitarian response planning and design.



## Event Overview



DTM teams activated EET to monitor the displacement of individuals affected by inter-communal conflict between Masalit and Arab tribes. Clashes initially erupted on 16 January 2021 in the Krinding area of Ag Geneina town, West Darfur. Since 3 April 2021, inter-communal conflict has escalated in the Hai Eljabal area of Ag Geneina town, West Darfur, resulting in additional displacement. For more information, please see [EET\\_Ag Geneina, West Darfur\\_015](#).

The sixteenth update estimates a total number of 151,292 individuals (30,305 households) seeking shelter in Ag Geneina and its surrounding villages. The IDP caseload was displaced from Krinding 1 and 2 IDP camps (36%), Hai Eljabal area (27%), Sultan House area (10%) and other sites nearby (27%). Since the fifteenth update, there has been a decrease of less than one per cent in displacement figures (inclusive of a decrease of 3,300 individuals across 16 sites and an increase of 3,185 individuals across four newly identified sites).

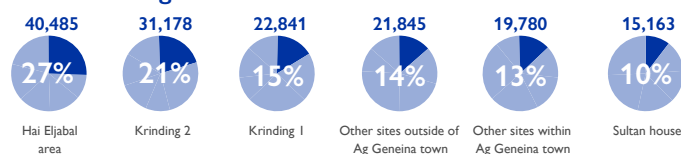
DTM teams have recollected data for its protection indicator to identify at least 18,712 individuals with additional vulnerabilities in need of assistance and support. DTM teams also recaptured (upon further verification) 337 individuals killed and 656 having sustained injuries, whilst at least 20,788 individuals have lost personal belongings and livestock throughout the conflict.

Based on a ranking scale, the three main priority needs for the displaced caseload in Ag Geneina town are WASH (water, sanitation, and hygiene), food and emergency shelter. On the other hand, the three main priority needs for the displaced caseload in the villages surrounding Ag Geneina town are food, non-food items and WASH.

### Displaced Caseload Located Outside of Ag Geneina Town

Displacement sites	# IDP Individuals	# IDP Households
Kereneik	6,640	1,328
Shukry	2,250	450
Muli	1,600	321
Sisi camp	175	35
<b>Grand Total</b>	<b>10,665</b>	<b>2,134</b>

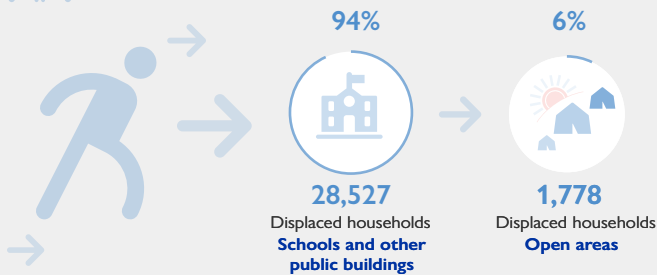
### Places of Origin<sup>1</sup>



<sup>1</sup> Where possible, the Krinding area has been further disaggregated into the respective villages of Droti, Um Dowin and Darelnaeem, as well as Krinding 1 and Krinding 2 IDP camps (reflected in EET 008 to 016 datasets).



## Shelter Indicator



## Priority Needs (Ranking scale)

### AG GENEINA TOWN

**WASH**  
(Water, Sanitation and Hygiene)



**FOOD**



**EMERGENCY SHELTER**



**NON-FOOD ITEMS**



### SURROUNDING VILLAGES

**FOOD**



**NFI** NON-FOOD ITEMS



**WASH**  
(Water, Sanitation and Hygiene)



**EDUCATION**



Through its shelter indicator, DTM identified 28,527 IDP households (94%) sheltering in schools and other public buildings dispersed across Ag Geneina town, as well as Muli village and Sisi camp. The remaining caseload of 1,778 IDP households (6%) are gathering in open areas of Shukry and Kereneik villages.

Of the 151,292 IDPs located in Ag Geneina town and its surrounding villages, 79,121 (52%) are female and 72,121 (48%) are male. Further disaggregation by age indicates 18 to 59 as the predominant age category (16% female, 15% male), followed by ages 0 to five (16% female, 14% male), six to 17 (15% female, 14% male) and 60 and over (5% female, 5% male).

At least 18,712 cases of additional vulnerabilities in need of further support and assistance were identified through DTM's protection indicator. Lactating and pregnant women made up 25 and 17 per cent respectively, followed by malnourish individuals (15%), female-headed households (14%), child-headed households (7%), elders providing care to their households (6%), single parents (5%), unaccompanied elders (4%), physical disabilities (2%), mental illnesses (2%), chronic illnesses (2%) and unaccompanied minors (1%).

Based on a ranking scale, the three main priority needs for the displaced caseload in Ag Geneina town are WASH (water, sanitation, and hygiene), food and emergency shelter. On the other hand, the three main priority needs for the displaced caseload in the villages surrounding Ag Geneina town are food, non-food items and WASH.

Data on return intention, demographics, protection indicators and priority needs are subject to further verification through registration activities. Displacement figures collected through this activity are further refined with each data collection round to reduce any discrepancies that may result from the miscorrelation of the EET methodology and that of DTM registration activities linked to direct humanitarian assistance.



## Return Intention

Data collected through the return intention indicator suggests that all IDPs in Ag Geneina town and its surrounding villages (100%) intend to return to their locations of origin upon improvement of the security situation.

## Vulnerabilities

**4,718**  
Lactating women



**3,146**  
Pregnant



**2,829**  
Malnourished



**2,676**  
Female-headed households



**1,229**  
Child-headed households



**1,144**  
Elders providing care to their households



**964**  
Single parents



**730**  
Unaccompanied elders



**417**  
Physical disabilities



**373**  
Mental illnesses



**280**  
Chronic illnesses



**206**  
Unaccompanied minors

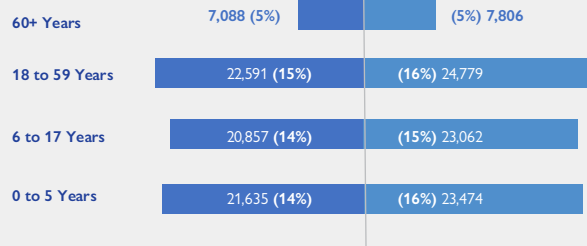


## Demographics

**Male**  
**48%**  
72,171  
individuals



**Female**  
**52%**  
79,121  
individuals



### IOM DISCLAIMER

The opinions expressed in the report are those of the authors and do not necessarily reflect the views of the International Organization for Migration (IOM). The designations employed and the presentation of material throughout the report do not imply the expression of any opinion whatsoever on the part of IOM concerning the legal status of any country, territory, city or area, or of its authorities, or concerning its frontiers or boundaries.

IOM is committed to the principle that humane and orderly migration benefits migrants and society. As an intergovernmental organization, IOM acts with its partners in the international community to: assist in the meeting of operational challenges of migration; advance understanding of migration issues; encourage social and economic development through migration; and uphold the human dignity and well-being of migrants.

