

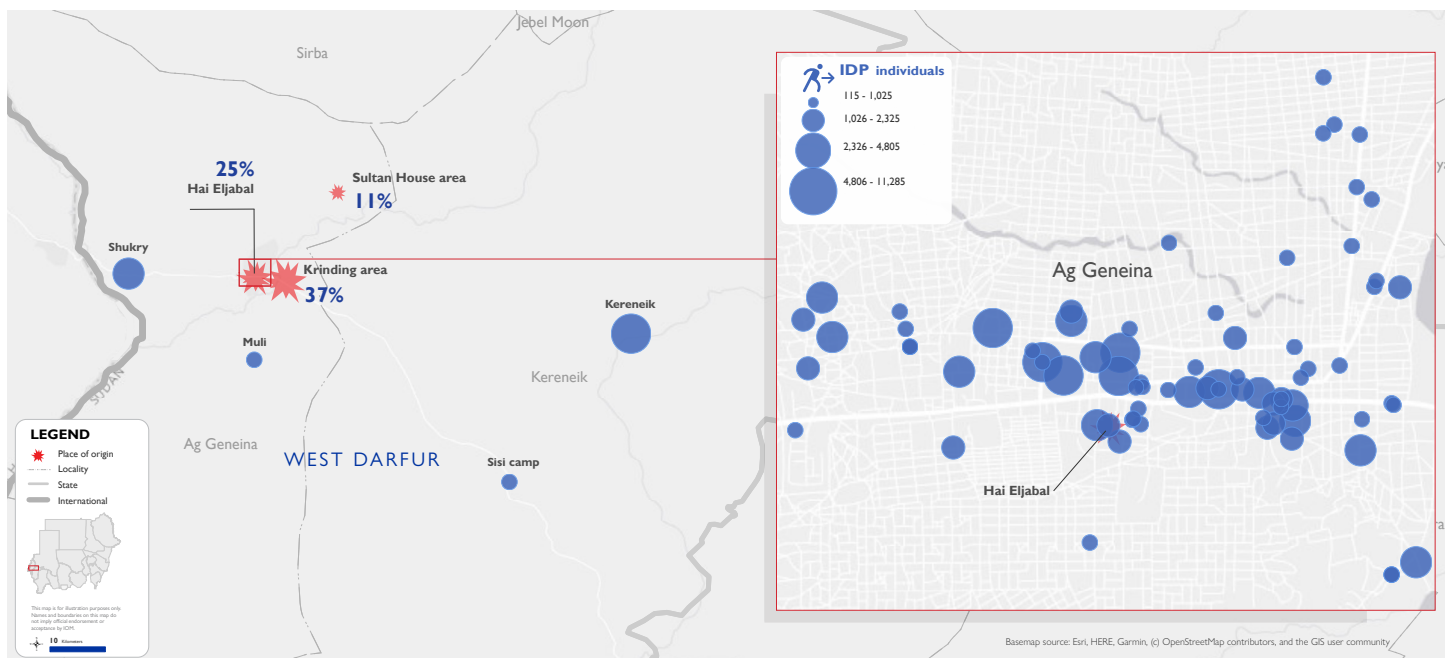
EMERGENCY EVENT TRACKING

Data collection: 11 April 2021

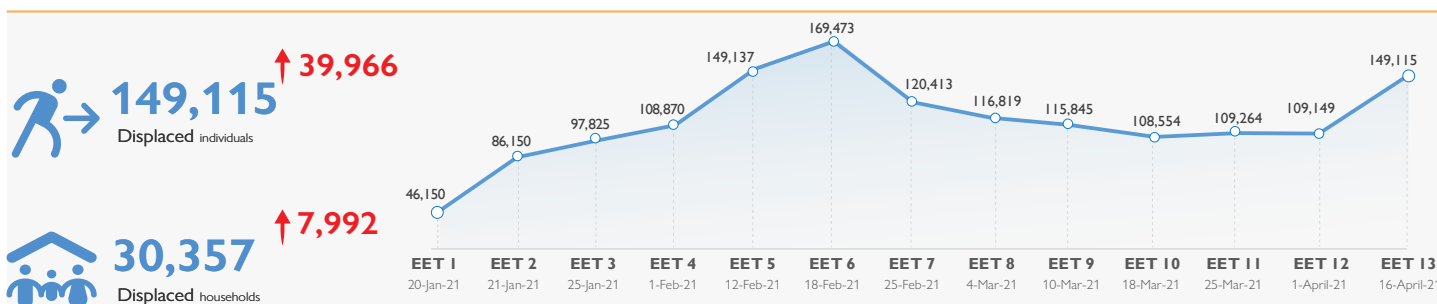
CONFLICT



The DTM Emergency Event Tracking (EET) is deployed to track sudden displacement and population movements, provide more frequent updates on the scale of displacement, and quantify the affected population when needed. As a subcomponent of the new Mobility Tracking methodology in Sudan ([Round One](#)), and activated on a need basis, EET utilises a broad network of key informants to capture best estimates of the affected population presence per location – a useful tool for humanitarian response planning and design.



Event Overview



Graph 1: Number of IDPs by Emergency Event Tracking Date

* Data illustrated on Graph 1 depicts the increasing caseload of IDPs as they were found, not as they were displaced.

DTM teams activated EET to monitor the displacement of individuals affected by inter-communal conflict between Masalit and Arab tribes. Clashes initially erupted on 16 January 2021 in the Krinding area of Ag Geneina town, West Darfur. For more information, please see [EET Ag Geneina, West Darfur_012](#). Since 3 April 2021, inter-communal conflict has escalated between Masalit and Arab tribes in the Hai Eljabal area of Ag Geneina town, West Darfur, resulting in additional displacement. To contain the situation, local markets have been closed and humanitarian activities suspended.

The thirteenth update incorporates this new caseload and estimates a total number of 149,115 individuals (30,357 households) seeking shelter in Ag Geneina and its surrounding villages, having been displaced from Krinding 1 and 2 IDP camps (37%), Hai Eljabal area (25%), Sultan House area (11%) and other sites nearby (27%). This new total represents a 37 per cent increase in displacement since the twelfth update due to the most recent clashes, with newly displaced households arriving from Abuzar IDP camp, Althora, Um Dowin, Sultan House and the Hai Eljabal area of Ag Geneina town.

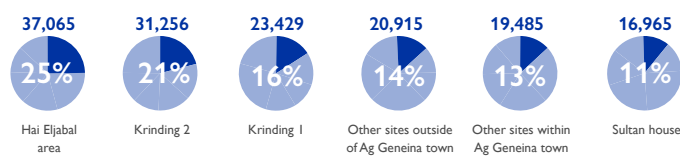
The new caseload of 39,966 individuals (7,922 households) are located across 43 sites in Ag Geneina town at present, 84 per cent of whom have joined existing displacement sites and 16 per cent of whom are situated across four newly identified sites in Ag Geneina town (namely, Ag Geneina University, the Judicial Mosque, the Old Mosque and the Alsalam Mosque). Of this new caseload, DTM teams identify 117 individuals have been killed and 223 sustained injuries during the recent clashes, whilst at least 19,532 new IDPs have lost personal belongings and livestock (bringing the total death toll to 283 injuries, 650 injuries and 20,305 individuals suffering severe losses throughout the conflict). The most urgent need facing the new caseload is reported to be WASH (water, sanitation and hygiene).

Access constraints, heightened tensions and the urgent need for updated information have meant that DTM has prioritised the verification of displacement figures (including sex and age disaggregation) in this update. In the next update, DTM will collect data on additional vulnerabilities and priority needs, as well as visit eight newly identified displacement sites not yet covered in this round.

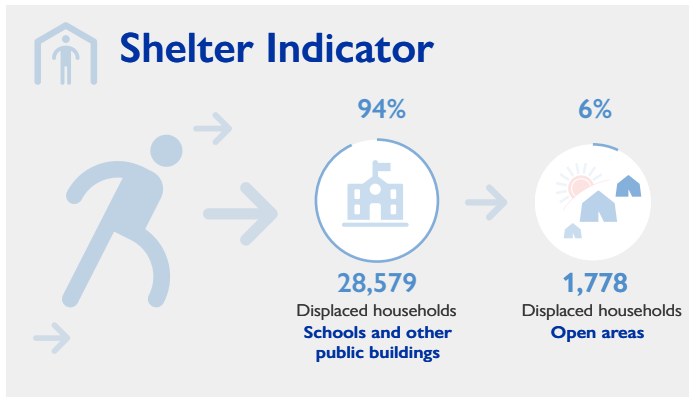
Displaced Caseload Located Outside of Ag Geneina Town

Displacement sites	# IDP Individuals	# IDP Households
Kereneik	6,640	1,328
Shukry	2,250	450
Muli	470	95
Sisi camp	175	35
Grand Total	9,535	1,908

Places of Origin¹



¹ Where possible, the Krinding area has been further disaggregated into the respective villages of Droti, Um Dowin and Darelnaem, as well as Krinding 1 and Krinding 2 IDP camps (reflected in EET 008 to 013 datasets).



Through its shelter indicator, DTM identified 28,579 IDP households (94%) sheltering in schools and other public buildings dispersed across Ag Geneina town, as well as Muli village and Sisi camp. The remaining caseload of 1,778 IDP households (6%) are gathering in open areas of Shukry and Kereneik villages.

Of the 149,115 IDPs located in Ag Geneina town and its surrounding villages, 77,892 (52%) are female and 71,223 (48%) are male. Further disaggregation by age indicates 18 to 59 as the predominant age category (16% female, 15% male), followed by ages six to 17 (16% female, 14% male), 0 to five (15% female, 14% male) and 60 and over (5% female, 5% male). Changes in respective percentages reflect the demographic profile of the new caseload captured in this update.

At least 14,519 cases of additional vulnerabilities in need of further support and assistance were identified through DTM's protection indicator.² Lactating and malnourished individuals made up 21 and 20 per cent respectively, followed by female-headed households (15%), pregnant women (14%), child-headed households (8%), elders providing care to their households (6%), single parents (6%), unaccompanied elders (4%), physical disabilities (2%), mental illnesses (2%), unaccompanied minors (1%) and chronic illnesses (1%).

Based on a ranking scale, the three main priority needs for the displaced caseload in Ag Geneina town remain as WASH (water, sanitation, and hygiene), education, and health (medical needs). On the other hand, the three main priority needs for the displaced caseload in the villages surrounding Ag Geneina town remain as food, non-food items and WASH.³

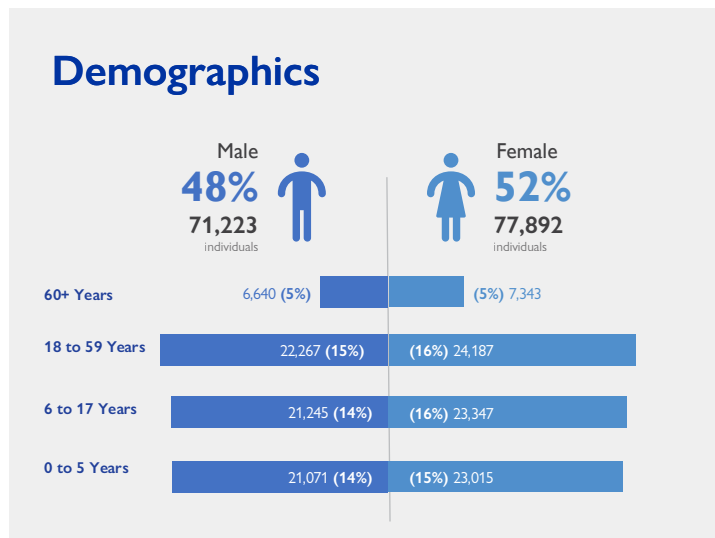
Data on return intention, demographics, protection indicators and priority needs are subject to further verification through registration activities. Displacement figures collected through this activity are further refined with each data collection round to reduce any discrepancies that may result from the miscorrelation of the EET methodology and that of DTM registration activities linked to direct humanitarian assistance.

² Since the eleventh EET update, there have been no changes to the reported vulnerabilities across all displacement sites, barring the increase of 2 unaccompanied elders in this update due to further verification. Vulnerabilities reported for the new caseload will be collected in the next update.

³ DTM teams are continuing to collect and verify the priority needs for the new caseload in Ag Geneina town.

Return Intention

Data collected through the return intention indicator suggests that all IDPs in Ag Geneina town and its surrounding villages (100%) intend to return to their locations of origin upon improvement of the security situation.



IOM DISCLAIMER

The opinions expressed in the report are those of the authors and do not necessarily reflect the views of the International Organization for Migration (IOM). The designations employed and the presentation of material throughout the report do not imply the expression of any opinion whatsoever on the part of IOM concerning the legal status of any country, territory, city or area, or of its authorities, or concerning its frontiers or boundaries.

IOM is committed to the principle that humane and orderly migration benefits migrants and society. As an intergovernmental organization, IOM acts with its partners in the international community to: assist in the meeting of operational challenges of migration; advance understanding of migration issues; encourage social and economic development through migration; and uphold the human dignity and well-being of migrants.