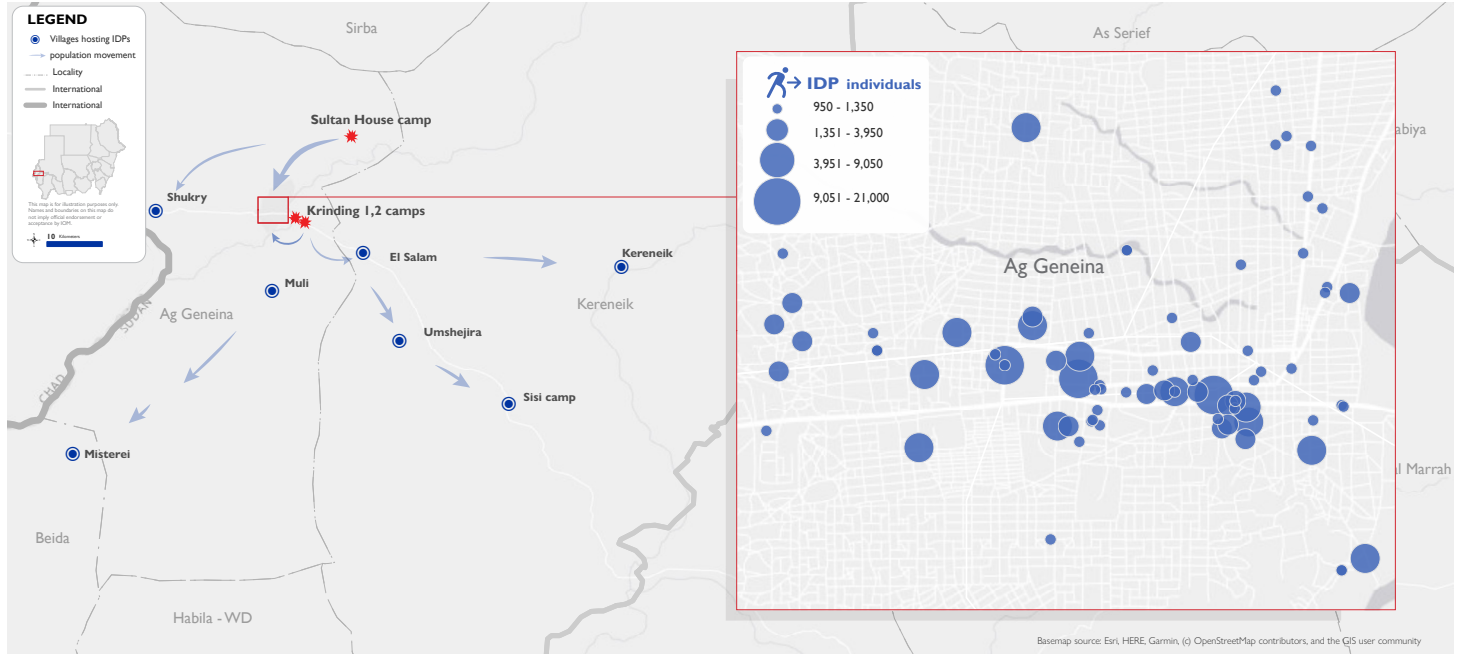
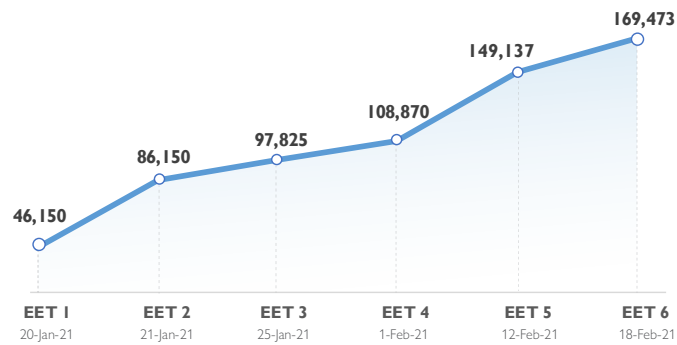




The DTM Emergency Event Tracking (EET) is deployed to track sudden displacement and population movements, provide more frequent updates on the scale of displacement, and quantify the affected population when needed. As a subcomponent of the new Mobility Tracking methodology in Sudan ([Round One](#)), and activated on a need basis, EET utilises a broad network of key informants to capture best estimates of the affected population presence per location – a useful tool for humanitarian response planning and design.



Event Overview



Graph 1: Number of IDPs by Emergency Event Tracking Date

* Data illustrated in Graph 1 depicts the increasing caseload of IDPs as they were found, not as they were displaced. Since the reopening of access routes to Ag Geneina town, the Inter Sector Coordination Group (ISCG) has reported a potential discrepancy in the figures available for El Salam, Umshejira and Shukry villages. DTM teams are consulting with the ISCG to verify the population groups present in the respective villages.

Displaced Caseload Located Outside of Ag Geneina Town

Displacement sites	# IDP Individuals	# IDP Households
El Salam	21,000	4,200
Umshejira	19,000	3,800
Muli	9,050	1,810
Kereneik	8,955	1,791
Shukry	3,950	790
Misterie	1,350	270
Sisi Camp	950	190
Grand Total	64,255	12,851

Table 1: Displaced Caseload Located Outside of Ag Geneina Town

DTM teams activated EET to monitor the displacement of individuals affected by inter-communal conflict between Masalit and Arab tribes. Clashes erupted on 16 January 2021 in the Krinding area of Ag Geneina town, West Darfur. For more information, please see [EET_Ag Geneina, West Darfur_005](#).

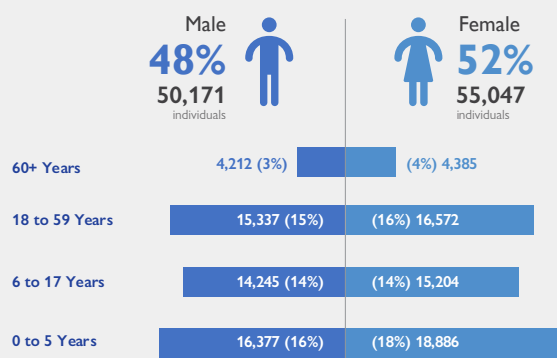
The sixth update estimates a total number of 169,473 individuals (34,684 households) seeking shelter in Ag Geneina and its surrounding villages, having been displaced from Krinding 1 and 2 camps (44%), Sultan House (12%) and nearby villages (44%). Since the fifth EET, there has been a 14 per cent increase in the captured number of individuals displaced, including an additional caseload of 20,936 in Ag Geneina town. On the other hand, 600 individuals have since departed Muli village to return to their place of origin due to security improvements.

All individuals are Sudanese nationals. At least 12,725 individuals are reported to have additional vulnerabilities in need of assistance and support (42% increase since the previous figure captured in update four). DTM teams identify 155 individuals have been killed and 474 sustained injuries¹, whilst at least 8,883 internally displaced persons (IDPs) have lost personal belongings and livestock (287 pertaining to the new caseload). Based on a ranking scale, the three main priority needs for the displaced caseload in Ag Geneina town are identified as food, non-food items and WASH (water, sanitation and hygiene).

With tensions extremely high and volatile, DTM teams are continuing to collect data from the surrounding villages of Ag Geneina from key informants via telephone. As soon as the situation allows, teams will visit these sites of displacement to verify the data and provide best estimates on the entire displaced caseload.

¹The total number of losses has been updated following access improvements, which allowed for in-person visits to the displacement sites

Demographics



* Demographics apply only to the caseload of IDPs located in Ag Geneina town (105,218 individuals at present).

Priority Needs

(Ranking scale)



* Priority needs apply only to the caseload of IDPs located in Ag Geneina town (105,218 individuals at present).

Through its shelter indicator, DTM identified 24,103 IDP households (69%) sheltering in schools and other public buildings dispersed across Ag Geneina town, as well as Misterei and Muli villages and Sisi camp. The remaining caseload of 10,581 IDP households (31%) are gathering in open areas of El Salam, Umshejira, Shukry and Kereneik villages.

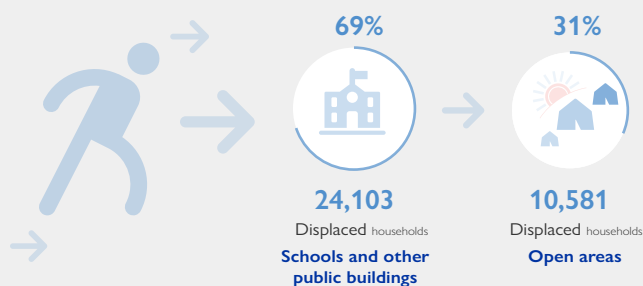
Of the 105,218 IDPs located in Ag Geneina town, 55,047 (52%) are female and 50,171 (48%) are male. Further disaggregation by age indicates 0 to five as the predominant age category (18% female, 16% male), followed by ages 18 to 59 (16% female, 15% male), six to 17 (14% female, 14% male) and 60 and over (4% female, 3% male).

At least 12,725 cases of additional vulnerabilities in need of further support and assistance were identified through DTM's protection indicator. Lactating and malnourished individuals made up 25 and 24 per cent respectively, followed by pregnant women (17%), elders providing care to their households (10%), single parents (8%), unaccompanied elders (6%), mental illnesses (3%), physical disabilities (3%), unaccompanied minors (2%), female-headed households (1%) and chronic illnesses (1%).

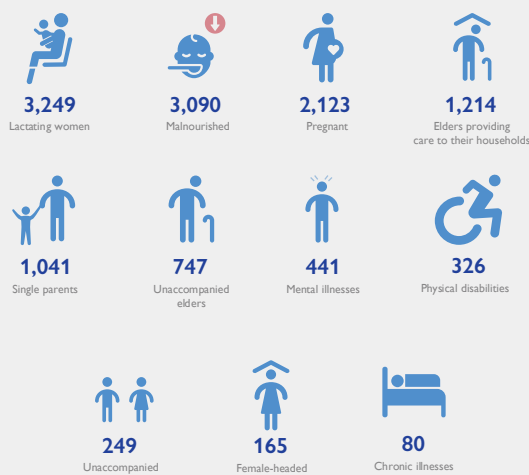
Based on a ranking scale, the three main priority needs for the displaced caseload in Ag Geneina town are identified as food, non-food items and WASH (water, sanitation and hygiene). Urgent humanitarian assistance is needed.

Data on return intention, demographics, protection indicators and priority needs are subject to further verification through registration activities. Displacement figures collected through this activity are further refined with each data collection round to reduce any discrepancies that may result from the miscorrelation of the EET methodology and that of DTM registration activities linked to direct humanitarian assistance.

Shelter Indicator



Vulnerabilities



* Vulnerabilities apply only to the caseload of IDPs located in Ag Geneina town (105,218 individuals at present).

Return Intention

Data collected through the return intention indicator suggests that the majority of IDPs in Ag Geneina town intend to return to their locations of origin (93%) upon improvement of the security situation, whilst the remaining caseload (7%) intend to remain in their place of displacement.

* Return intentions apply only to the caseload of IDPs located in Ag Geneina town (105,218 individuals at present).

IOM DISCLAIMER

The opinions expressed in the report are those of the authors and do not necessarily reflect the views of the International Organization for Migration (IOM). The designations employed and the presentation of material throughout the report do not imply the expression of any opinion whatsoever on the part of IOM concerning the legal status of any country, territory, city or area, or of its authorities, or concerning its frontiers or boundaries.

IOM is committed to the principle that humane and orderly migration benefits migrants and society. As an intergovernmental organization, IOM acts with its partners in the international community to: assist in the meeting of operational challenges of migration; advance understanding of migration issues; encourage social and economic development through migration; and uphold the human dignity and well-being of migrants.