



DISPLACEMENT TRACKING MATRIX | DTM SUDAN
SUDAN'S INTERNALLY DISPLACED PERSONS
2023 ESTIMATES

JANUARY 2024



IOM
UN MIGRATION

DISPLACEMENT
TRACKING MATRIX (DTM)

Sudan hosts an estimated **9,052,822** internally displaced persons (IDPs) as of 31 December 2023, representing the largest internal displacement crisis worldwide.

BACKGROUND

Prior to 15 April 2023, Sudan already hosted an estimated 3,820,772 IDPs. From 15 April 2023, armed clashes erupted between the Sudanese Armed Forces (SAF) and the Rapid Support Forces (RSF) in multiple cities across Sudan. Clashes initially took place in cities across Northern and Khartoum states, later spreading across the Darfur and Kordofan regions, and most recently occurring in Aj Jazirah state in December 2023. Clashes have resulted in significant loss of life and spurred

extensive displacement, with 6,036,176 IDPs displaced over the past nine months.

To estimate the overall number of IDPs in Sudan, including both those displaced before and after 15 April 2023, DTM Sudan carried out extensive analysis of its displacement data which is presented in this report. The methodology used accounts for secondary displacement to estimate the baseline figure for the total number of IDPs in Sudan to inform humanitarian partners.

HIGHLIGHTS

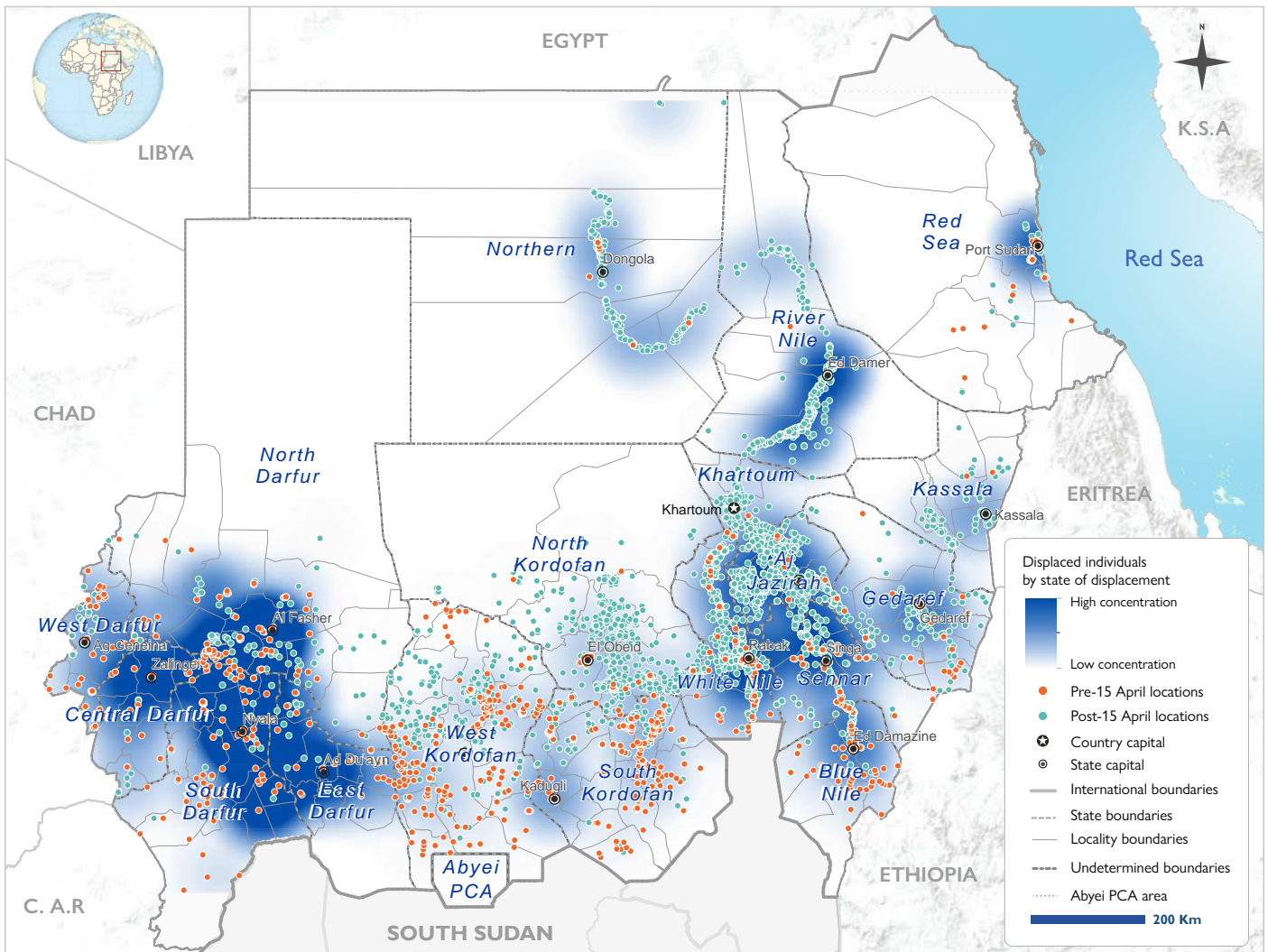
9,052,822 IDPs
 3M IDPs Prior to April 2023
 6M IDPs Since 15 April 2023

1,806,602
 DISPLACED HOUSEHOLDS

7,211
 LOCATIONS

19%
 LIVING IN INFORMAL SETTLEMENTS

2,199,478
 CHILDREN UNDER 5



Map 1: Baseline Displacement Population Density

This map is for illustration purposes only. Names and boundaries on this map do not imply official endorsement or acceptance by IOM.

METHODOLOGY

DTM Sudan's operational definition for an IDP is any person who has been forced or obliged to flee from their habitual residence due to an event dating from 2003 onwards.

Before 15 April 2023, DTM Sudan employed several data collection methodologies to evaluate Sudan's displacement context, including DTM's Mobility Tracking methodology (MT)¹. During MT implementation, DTM field teams visited thousands of locations across Sudan, interviewing a wide network of key informants to assess displacement at administrative level 3, the smallest administrative boundary used in Sudan².

DTM Sudan conducted six rounds of mobility tracking between 2020 and 2023. The most recent round of Mobility Tracking, ([Round 6](#)), was conducted in the first quarter of 2023 and concluded on 15 March 2023, one month before the start of the large-scale conflict between RSF and SAF. During Round Six, DTM Sudan reported an estimated 3,820,772 IDPs (763,889 households) across 1,053 locations, within 138 localities, in 17 states across Sudan, as depicted in Graph 1. Round Six data collection findings represent an indicative estimate of the IDP population in Sudan prior to the current crisis.

The number of persons internally displaced in Sudan in 2023 was:

5x the number of those displaced in 2022
2x the cumulative caseload from 2003-2022



Graph 1: Proportion of the 2023 IDP Baseline Population Estimate, by time period of initial displacement

To inform humanitarian partners, and at the request of the United Nations Office for the Coordination of Humanitarian Affairs (OCHA), DTM Sudan conducted a consolidation exercise of displacement figures using data from Mobility Tracking Round 6 from March 2023 and displacement data collected since 15 April 2023. This consolidation exercise produced a total estimated figure for internal population displacement across Sudan, as visualized in Table 1.

First, DTM comprehensively identified locations housing IDPs that were impacted by the conflict that occurred on, and after, 15 April 2023. Then, DTM identified instances of secondary displacement originating from the locations identified. To ensure accuracy and up-to-date information, DTM aggregated data from key informants based in locations of displacement. Informants provided first-hand information about the movement patterns, population sizes, needs and housing situation of IDPs. To arrive at the overall baseline figure of IDPs, DTM subtracted the number of IDPs who experienced secondary displacement from the total number of IDPs recorded in Mobility Tracking (Round 6) and added, at the location level, the number of newly displaced after April 2023. This overall baseline figure represents an estimate of the current total IDP caseload across Sudan, as depicted in Table 1. Age and gender disaggregation data for each site was estimated by extrapolating based on the age range and gender of members of randomly selected households from each site. Individual and household data are estimates based on the data collected at site level.

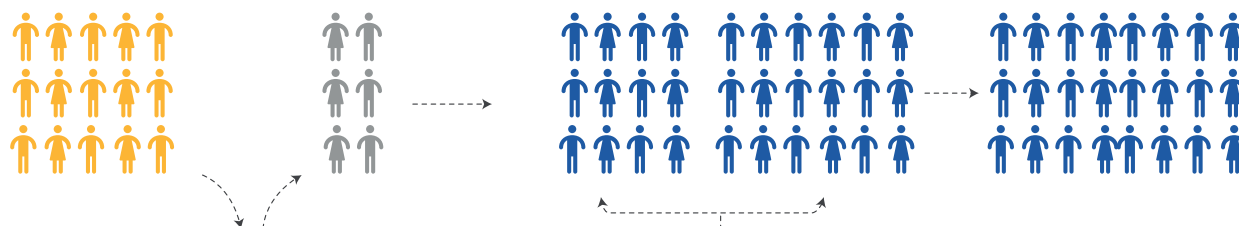
State of Displacement	MT Round 6 March 2023		Baseline 2023		
	Total Number of IDPs	Secondary Displacement	Pre 15 April	Post 15 April	Total IDPs
Aj Jazirah	15,479	-	15,479	503,232	518,711
Blue Nile	146,111	-	146,111	120,684	266,795
Central Darfur	501,659	69,838	431,821	362,210	794,031
East Darfur	123,900	16,435	107,465	659,380	766,845
Gedaref	24,626	-	24,626	371,901	396,527
Kassala	2,500	-	2,500	157,332	159,832
Khartoum	-	-	-	37,870	37,870
North Darfur	859,323	171,309	688,014	457,008	1,145,022
North Kordofan	40,507	2,162	38,345	140,293	178,638
Northern	4,357	-	4,357	385,243	389,600
Red Sea	15,620	-	15,620	218,380	234,000
River Nile	3,484	-	3,484	679,271	682,755
Sennar	54,698	-	54,698	422,499	477,197
South Darfur	1,079,989	169,237	910,752	695,443	1,606,195
South Kordofan	261,781	23,037	238,744	108,539	347,283
West Darfur	479,135	343,534	135,601	126,190	261,791
West Kordofan	161,668	8,574	153,094	98,356	251,450
White Nile	45,935	-	45,935	492,345	538,280
Total	3,820,772	804,126	3,016,646	6,036,176	9,052,822

Table 1: Overview of displacement by state

1. For further information, please consult [DTM Active Methodological Components 2023](#).

2. OCHA Common Operational Dataset (CODs), September 2020.

MT Round 6 March 2023		Baseline 2023		
Total number of IDPs	Secondary Displacement	Pre 15 April	Post 15 April	Total IDPs
3,820,772	804,126	3,016,646	6,036,176	9,052,822



Subtracted the estimated number of IDPs who experienced secondary displacement from the total estimated number of IDPs recorded in March 2023 via Mobility Tracking Round 6.

Added the individuals displaced prior to 15 April 2023 to the total population of individuals displaced after 15 April 2023 and subtracted the instances of secondary displacement. This resulted in an estimated total of 9,052,822 individuals.

Table 2: Methods and Results Summary

LIMITATIONS

Due to ongoing clashes, humanitarian access to conflict hotspots is limited. Field teams reported recurring telecommunication issues, security concerns, high inflation and fuel costs, all of which limited the capacity to travel domestically and conduct reverification exercises. While the data collected was triangulated to the best possible extent, the current figure represents an indicative estimation. DTM Sudan intends to carry out Mobility Tracking Round Seven as soon as security conditions and logistics permit.

The data used to draft estimations is based on IOM DTM's Mobility Tracking methodology, which relies on key informant interviews, direct observation and focus group discussions. For detailed insights into DTM's active methodologies, please refer to DTM Sudan's Active Methodological Components.

FINDINGS

As of 31 December 2023, an estimated 9,052,822 total IDPs were displaced across Sudan. Thus, Sudan hosts approximately 13 per cent of all the internally displaced persons globally and nearly 1 in every 8 internally displaced persons worldwide is Sudanese.*

Since 15 April 2023, DTM Sudan estimated that 6,036,176 individuals (1,201,356 Households) were displaced across 6,512 locations, within 180 localities, across all 18 states in Sudan. Recent clashes resulted in an unprecedented rate of displacement in Sudan—with an average increase of approximately 200,000 IDPs every week. The number of displacements that occurred in 2023 (6,036,176) was over 5 times greater than the number of displacements estimated to have occurred in 2022 (235,963).** The number of individuals displaced was higher, and the frequency of population displacement was more frequent, during the 8.5 months since 15 April 2023 as compared to the cumulative 20 years prior.

Of the total number of IDPs recorded in March 2023 during Mobility Tracking Round Six (3,820,772 IDPs), DTM estimated

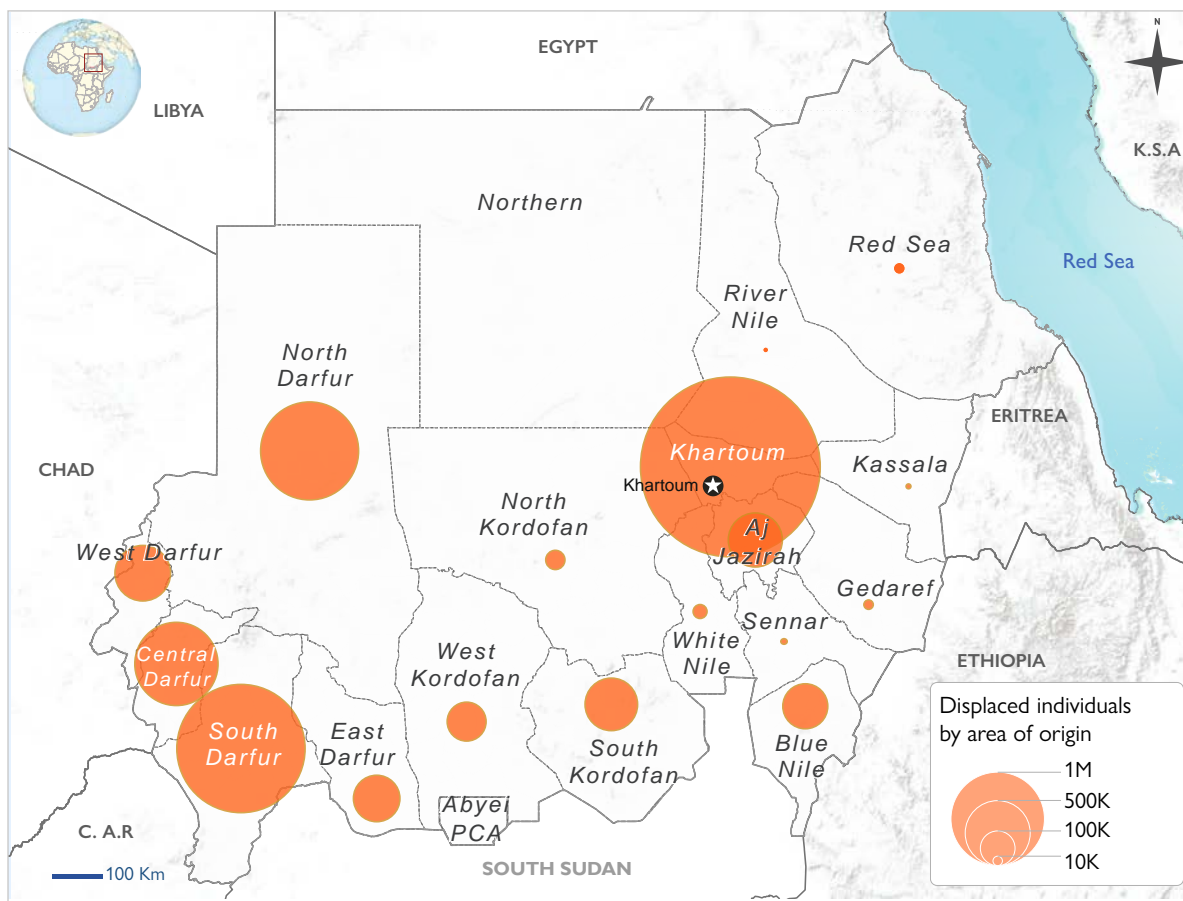
that 804,126 IDPs were secondarily displaced either internally or externally since 15 April 2023. This figure was therefore subtracted from the overall estimate of IDPs prior to 15 April 2023. The updated figure of IDPs who were displaced prior to the start of the conflict on 15 April 2023 then is estimated at 3,016,646 IDPs. The above methodology was designed to minimize, to the extent possible, the risk of double counting IDPs amidst the challenging operational environment.

As the epicenter of conflict, Khartoum experienced the greatest displacement nation-wide, with an estimated 3,681,297 individuals displaced from Khartoum state since 15 April 2023. Following Khartoum, and with the exception of East Darfur, residents originating from the Darfur states experienced the highest numbers of population displacement represented by the following estimates: South Darfur (1,867,019 individuals), North Darfur (1,085,684 individuals), Central Darfur (665,483 individuals) and West Darfur (353,689 individuals). Over 509,796 individuals in Aj Jazirah state were displaced, (approximately 275,796 IDPs were primarily displaced and approximately 234,000 IDPs were secondarily displaced) over the course of three days in December 2023. As such, Aj Jazirah is the area of origin for the sixth largest proportion of IDPs (335,959 individuals).

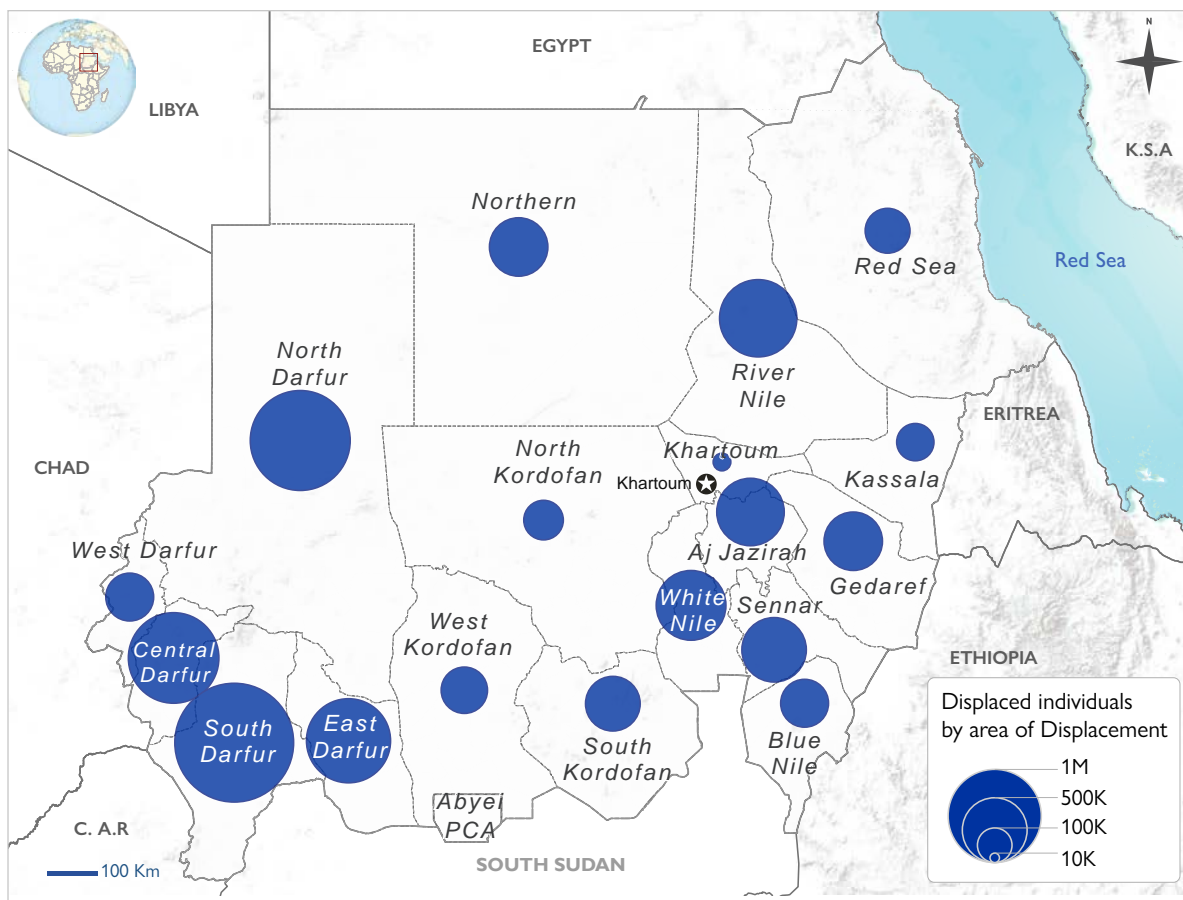
After Khartoum, most IDPs originated from North Darfur and South Darfur. The states hosting the highest numbers of IDPs are South Darfur (18% of total displaced, as of 31 December 2023), North Darfur (13% of the total displaced population), Central Darfur (9% of the total displaced population) and East Darfur (9% of the total displaced population). North Darfur and South Darfur are where the most IDPs originated and where most are hosted, indicating that the majority of displaced households sheltered in their state of origin. Given the sustained pace of armed clashes, it is likely that the short distance traveled by IDPs reflects their financial or physical inability to travel rather than their optimism that they will soon return to their area of origin.

*Internal Displacement Monitoring Centre (IDMC), 2023 Global Report on Internal Displacement. Figures were calculated using the IDMC GRID 2023 global total of 71.1 million IDPs as a denominator, with total IDPs according to DTM Sudan estimates (9,052,822) less the estimated population of foreign nationals according to DTM estimates (120,105) as a numerator.

**Source: 2022 Sudan DTM Mobility Tracking estimates as a proportion of 2023 Sudan DTM Mobility Tracking estimates.



Map 2: Total IDPs by Area of Origin*

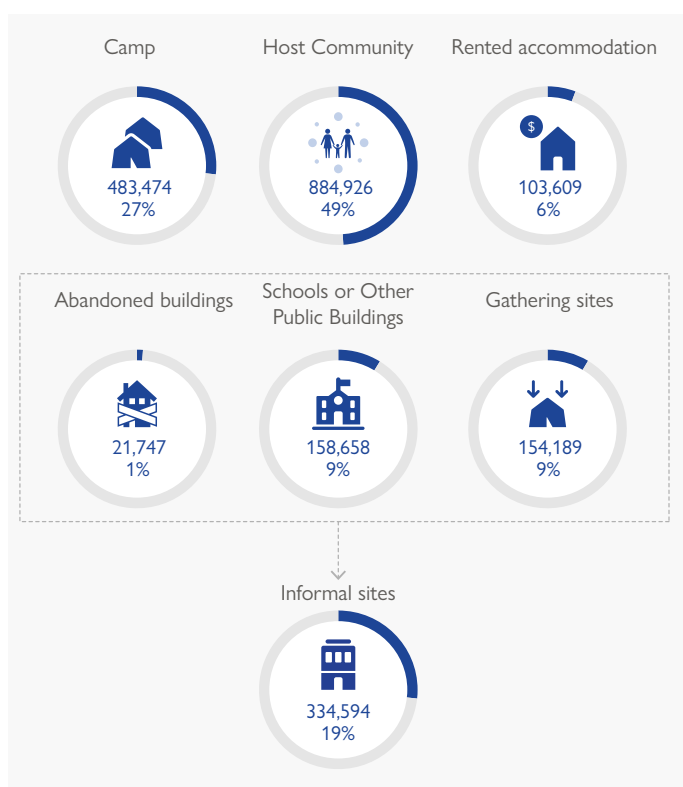


Map 3: Total IDPs by Area of Displacement*

These maps are for illustration purposes only. Names and boundaries on this map do not imply official endorsement or acceptance by IOM.

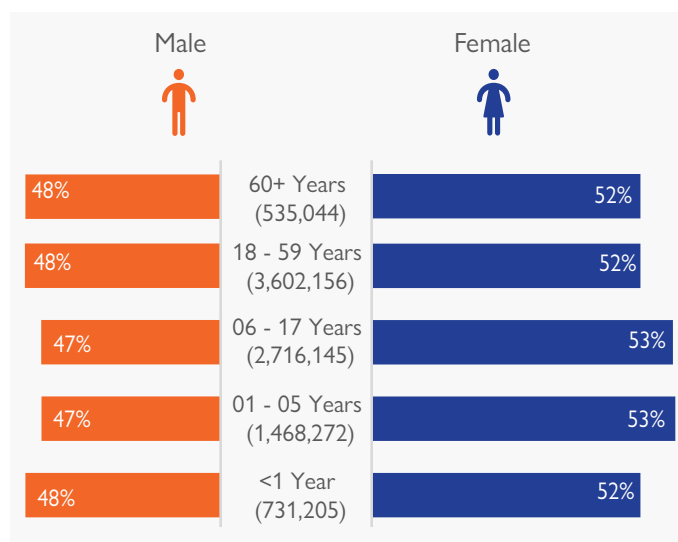
*Data at Administrative Level 3, taken from pre and post 15 April 2023, as of 31 December 2023

IDPs' shelter typologies also reflect a dire financial and humanitarian situation. An alarming 19 per cent, or 334,594 households, were estimated to shelter in abandoned buildings, gathering sites, schools or other public buildings. Most IDP households in Sudan sheltered within the host community (49%, or 884,926 households). IDPs' choice to reside with the host community may reflect their support from tribal connections and sheltering where a known social network exists. However, sheltering with communities increases demands on resources and may spur social tensions. Around a quarter of IDP households (27%, or 483,474 households) were sheltering in IDP camps. Individuals more commonly sheltered in the host community, camps, gathering sites (154,189) and schools or other public buildings (158,658), before rented accommodation (103,609).



Graph 2: IDP Households by Shelter Typology

In every age bracket analysed by DTM Sudan, female IDPs outnumbered male IDPs. Most IDPs were between 18 and 59 years old (3,602,156), of whom 1,875,529 (52%) were women. The next most populous age range of IDPs was between 6 and 17 years old (2,716,145), of whom 53 per cent were females and 47 per cent were males. Notably, an estimated 24 per cent of all IDPs were children between the ages of 0 and 5 years old, for whom displacement presents unique threats.



Graph 3: Age and Gender of IDPs in Sudan

CONCLUSION

DTM Sudan estimates that Sudan hosts a total of 9,052,822 internally displaced individuals. This estimation comprises: 3,016,646 IDPs who were displaced prior to 15 April 2023 and 6,036,176 IDPs who were displaced between April 2023 and December 2023. An estimated 1,574,135 individuals were estimated to have crossed borders from Sudan into neighbouring countries between 15 April 2023 and 31 December 2023.

Disclaimer

DTM Sudan is a suite of methodological tools which aims to track and monitor displacement. DTM collects primary data, with a focus on providing best estimates for support of the wider humanitarian community. DTM Sudan notes that armed clashes remain continuous in many areas across Sudan. As such, DTM is currently collecting data through a dual combination of face-to-face and remote interviews with key informants across its network. Data on flows into neighbouring countries is based on available information from DTM flow monitoring networks and secondary sources. Figures should be treated as preliminary findings only and are subject to change via future verification exercises.

For detailed insights into DTM's active methodologies, please refer to DTM Sudan's Active Methodological Components. All reports are available at: <https://dtm.iom.int/sudan>

Cover Photo: People fleeing the ongoing fighting in Sudan arrive in Chad © IOM/Francois Xavier Ada Affana 2023

For further information, please contact IOM Sudan:

Tel: +249 157 554 600/1/2

E-mail: dtmsudan@iom.int

Website: <https://sudan.iom.int>

<https://dtm.iom.int/sudan>