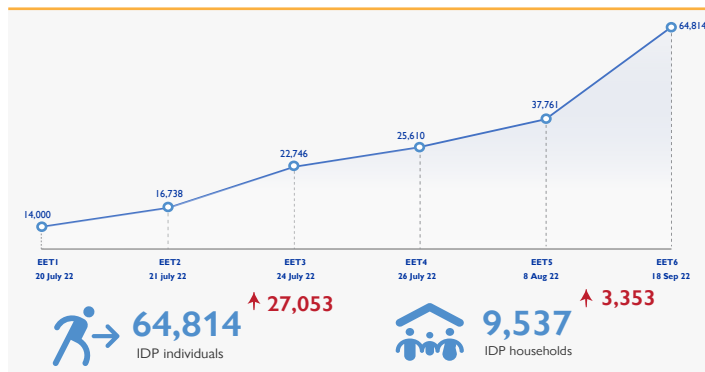


The DTM Emergency Event Tracking (EET) is deployed to track sudden displacement and population movements, provide more frequent updates on the scale of displacement, and quantify the affected population when needed. As a subcomponent of the new Mobility Tracking methodology in Sudan (Round Four), and activated on a need basis, EET utilises a broad network of key informants to capture best estimates of the affected population presence per location – a useful tool for humanitarian response planning and design.

## Event Overview

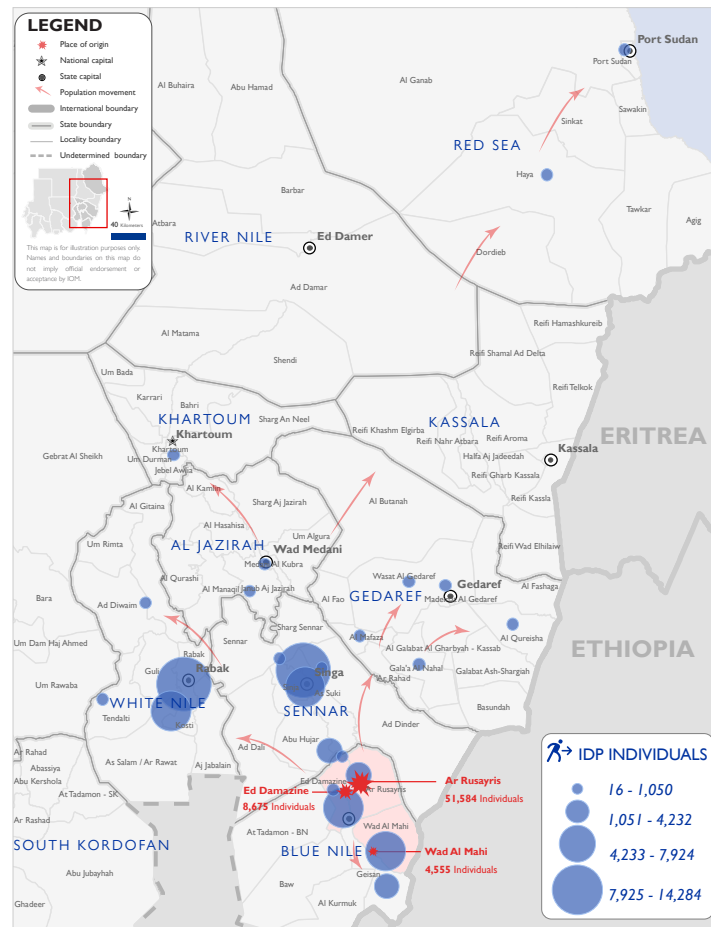


DTM teams activated EET to monitor the displacement of individuals affected by inter-communal violence across Blue Nile state. On 13 July 2022, inter-communal clashes erupted between members of the Hausa Tribe and the Hamaj and Barta tribes in Gabal Hamad and Village 7 in Wad Al Mahi locality, Blue Nile state, following the death of two individuals from the Hamaj tribe. Between 14 and 16 July 2022, inter-communal violence continued across several villages in Ar Rusayris locality. For more information, please Emergency Event Tracking Report Ar Rusayris, Blue Nile (Update 005). Clashes renewed on 1 and 2 September 2022 following the voluntary return of displaced members of the Hausa tribe to Blue Nile state and disagreements over the distribution of humanitarian assistance. Field teams report that returning Hausa clashed with Hamaj, Berta, and Aj Jabalaween tribes in village 7 in Wad Al Mahi locality, Blue Nile.

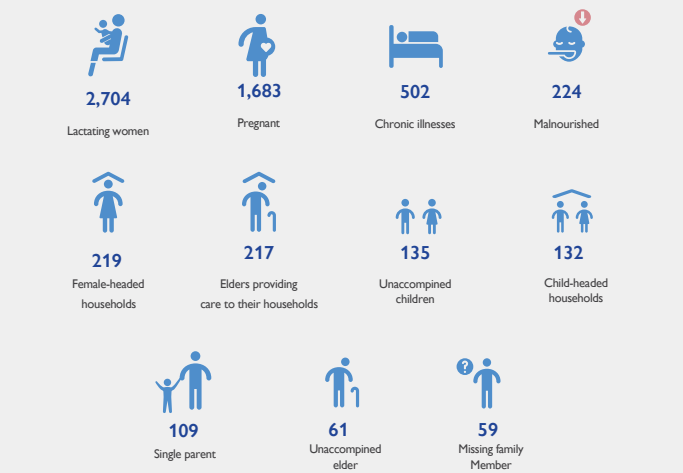
Between 5 September 2022 and 18 September 2022, focal points from Khartoum accompanied field teams on visits to locations in Blue Nile, White Nile, Al-Jazirah, and Sennar. In Blue Nile, DTM Sudan visited locations alongside the HAC-led Blue Nile Joint Technical Taskforce in Ed Damazine, Ar Rusayris, and Wad Al Mahi localities. This EET update is a snapshot of the IDP caseload during this time period. Field teams indicate that the mobility among the IDP caseload continues to be high. The conflict scenario also remains fluid, with locations and figures of displacement subject to variation in the future. Any changes will be reflected throughout future updates.

The sixth update estimates that there are currently 64,814 IDPs (9,537 households) displaced across Sennar (39.0%), White Nile (30.7%), Blue Nile (28.1%), Al-Jazirah (1.0%), Gedaref (0.9%), Red Sea (0.2%), and Khartoum (0.1%). The overall IDP caseload was originally displaced from Ar Rusayris (80%), Ed Damazine (13%), and Wad Al Mahi localities (7%) across Blue Nile state. Field teams indicate that IDPs within Blue Nile state are largely of Hausa origin, with a notable portion of the caseload being of Jabalaween, Fallatah, Berta, Hamaj, and Ragareeg origin. The IDP caseload located in the remaining states are all of Hausa origin.

Upon reverification, and in triangulation with other sources, DTM field teams indicate that at least 149 individuals were killed with a further 124 individuals sustaining injuries, and a total of 9,699 reported cases of lost goods, livestock, and/or cattle. All displaced individuals are Sudanese nationals. At least 6,045 cases of additional vulnerabilities in need of assistance and support were identified by key informants through DTM's Protection indicator. Additionally, DTM Sudan estimates that there are approximately 9,722 persons with disabilities among the IDP caseload.\* Consistent with the previous update, based on a ranking scale, the three priority needs across the caseload are Food, Emergency Shelter, Non-Food Items.



## Vulnerabilities



## Return Intention

Data for the Return Intention Indicator demonstrates that 59,571 IDPs (92%) intend to remain in their current locations. The remaining 5,243 IDPs (8%) intend to move to a third location. IDPs intending to move to a third location are all located in Ed Damazine locality, Blue Nile state.

\*DTM Sudan adopts the WHO global estimate that approximately 15% of the total population are persons with disabilities (PwD).



## Shelter Indicator



5,483

Displaced households

57.5%  
SCHOOLS AND OTHER  
PUBLIC BUILDINGS



3,161

Displaced households

33.1%  
HOST COMMUNITY



769

Displaced households

8.1%  
OPEN AREA INFORMAL  
SETTLEMENTS



114

Displaced households

1.2%  
ABANDONED BUILDINGS



10

Displaced households

0.1%  
RENTED ACCOMMODATION

## Priority Needs

(Ranking scale)



Food



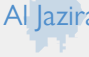




Emergency Shelter

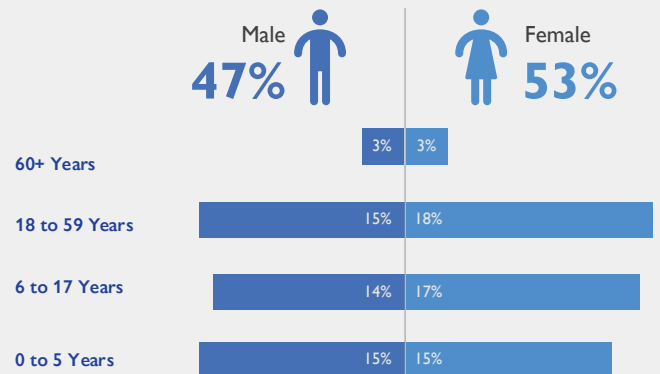


Non-Food Items

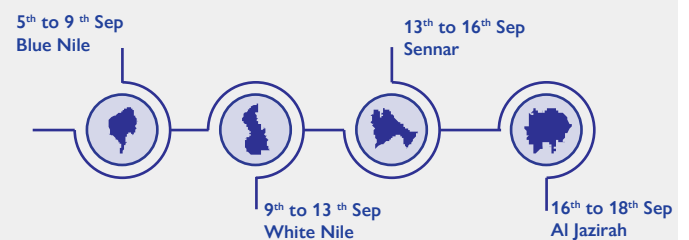
## IDP Breakdown by State

STATE	UPDATE 5	UPDATE 6	CHANGE  
 Sennar	12,617	25,248	12,631 
 White Nile	4,854	19,900	15,046 
 Blue Nile	18,541	18,234	307 
 Al Jazirah	1,215	658	557 
 Gedaref	0	606	606 
 Red Sea	0	113	113 
 Khartoum	534	55	479 

## Demographics



## Timeline of field visits



### IOM DISCLAIMER

The opinions expressed in the report are those of the authors and do not necessarily reflect the views of the International Organization for Migration (IOM). The designations employed and the presentation of material throughout the report do not imply the expression of any opinion whatsoever on the part of IOM concerning the legal status of any country, territory, city or area, or of its authorities, or concerning its frontiers or boundaries.

IOM is committed to the principle that humane and orderly migration benefits migrants and society. As an intergovernmental organization, IOM acts with its partners in the international community to: assist in the meeting of operational challenges of migration; advance understanding of migration issues; encourage social and economic development through migration; and uphold the human dignity and well-being of migrants.

