

EMERGENCY EVENT TRACKING: Tulus and Gereida, South Darfur

UPDATE 1: 11 June 2020

Data collection: 18 May 2020

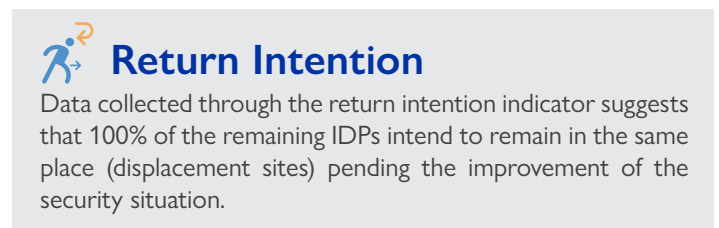
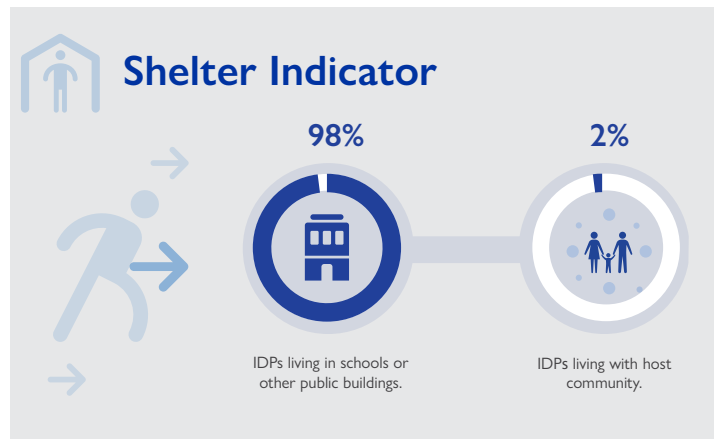
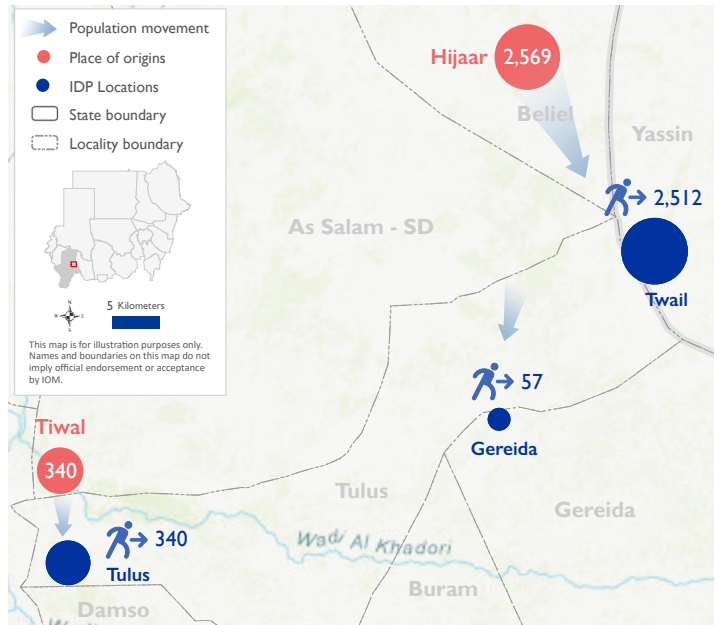
The DTM Emergency Event Tracking (EET) is deployed to track sudden displacement and population movements, provide more frequent updates on the scale of displacement and quantify the affected population when needed. As a subcomponent of the new Mobility Tracking methodology in Sudan ([Round Zero](#)), and activated on a need basis, EET utilises a broad network of key informants to capture best estimates of the affected population presence per location – a useful tool for humanitarian response planning and design.

Event Overview

2,909
Individuals

620
Households

DTM teams activated EET to monitor the displacement of individuals affected by inter-communal clashes occurring between Al-Falata and Arab tribes in Mayra village in Tulus locality, South Darfur on 5 May 2020. Clashes were triggered by theft of cattle, assets and crops. The first EET update estimates a total number of 2,909 individuals (620 households) were displaced originating from Beliel and As Salam localities, of which 2,512 individuals (500 households) arrived in Twail, 340 individuals (110 households) in Tulus and 57 individuals (10 households) in Gereida locality. Reports from the field indicate that the conflict resulted in more than 30 casualties and many wounded (unspecified number), 31 houses burned, 245 goats looted, as well as significant loss of cattle and livestock.



IOM DISCLAIMER

The opinions expressed in the report are those of the authors and do not necessarily reflect the views of the International Organization for Migration (IOM). The designations employed and the presentation of material throughout the report do not imply the expression of any opinion whatsoever on the part of IOM concerning the legal status of any country, territory, city or area, or of its authorities, or concerning its frontiers or boundaries.

IOM is committed to the principle that humane and orderly migration benefits migrants and society. As an intergovernmental organization, IOM acts with its partners in the international community to: assist in the meeting of operational challenges of migration; advance understanding of migration issues; encourage social and economic development through migration; and uphold the human dignity and well-being of migrants.

Demographics

Male 47% 1,354

Female 53% 1,555

Age Group	Male	Female
60+ Years	106 (4%)	(4%) 118
18 to 59 Years	462 (16%)	(20%) 578
6 to 17 Years	503 (17%)	(18%) 533
0 to 5 Years	283 (10%)	(11%) 326

Vulnerabilities

203
Lactating Women

83
Pregnant

9
Chronic illnesses

5
Mental illnesses

2
Physical disabilities