

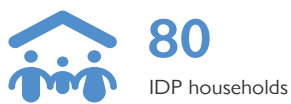
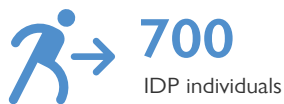
EMERGENCY EVENT TRACKING

Data collection: 15 February 2023



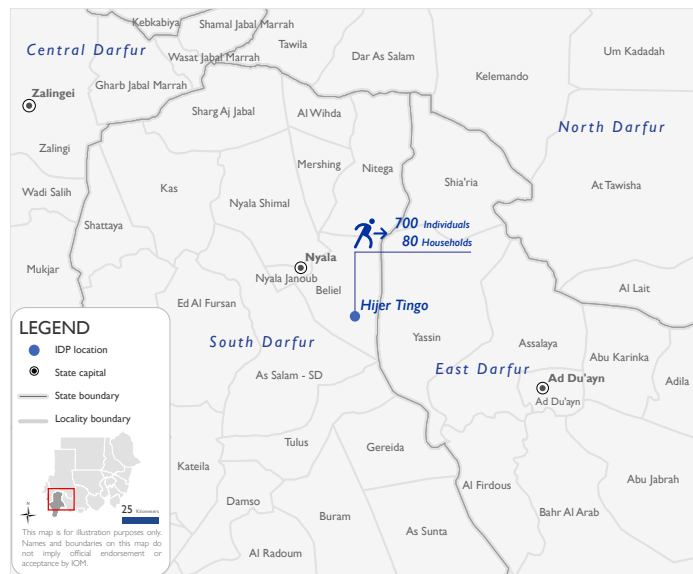
As a subcomponent of the Mobility Tracking methodology (Round Five), the Emergency Event Tracking (EET) tool is deployed to track sudden displacement, provide more frequent updates on the scale of displacement, and quantify the affected population when needed.

Event Overview

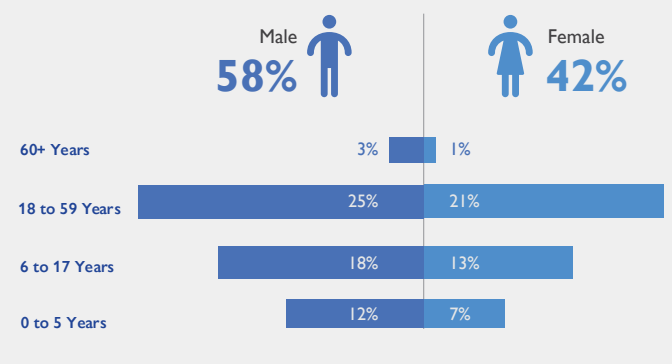


On 12 February 2023, a fire broke out in Hijer Tingo village in Beliel locality, South Darfur. Field teams report that 55 houses were completely burnt down and 25 houses were partially damaged. Field teams also report the loss of crops and livestock. The first EET update estimates a total number of 700 individuals (80 households) are currently seeking shelter with neighbours and relatives across Hijer Tingo village in Beliel locality, South Darfur.

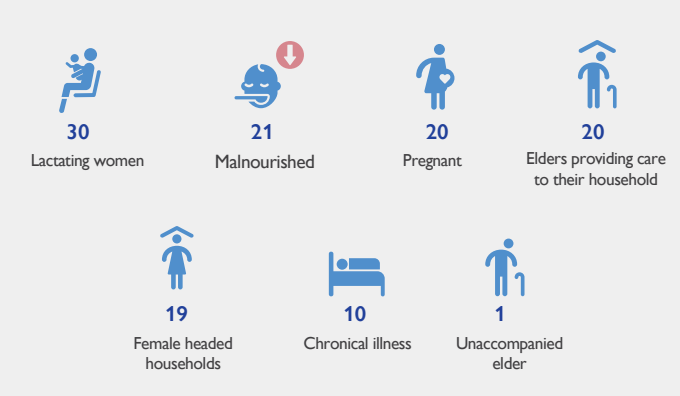
Field teams indicate that there were no deaths as a result of the fire and that two individuals sustained injuries. There have been 10 cases of reported lost goods, cattle, and/or livestock. All displaced individuals are Sudanese nationals. At least 121 cases of additional vulnerabilities in need of assistance and support were identified by key informants through DTM's Protection indicator. Additionally, DTM Sudan estimates that there are approximately 105 persons with disabilities among the IDP caseload*. Based on a ranking scale, the three priority needs across the caseload are Emergency Shelter, Non-Food Items, and Health (Medical Needs).



Demographics



Vulnerabilities



Shelter Indicator



Priority Needs (Ranking scale)



Return Intention

Data collected through the return intention indicator estimates that the entire IDP caseload (100%) intends to remain in their locations of displacement.

IOM DISCLAIMER

The opinions expressed in the report are those of the authors and do not necessarily reflect the views of the International Organization for Migration (IOM). The designations employed and the presentation of material throughout the report do not imply the expression of any opinion whatsoever on the part of IOM concerning the legal status of any country, territory, city or area, or of its authorities, or concerning its frontiers or boundaries.

IOM is committed to the principle that humane and orderly migration benefits migrants and society. As an intergovernmental organization, IOM acts with its partners in the international community to: assist in the meeting of operational challenges of migration; advance understanding of migration issues; encourage social and economic development through migration; and uphold the human dignity and well-being of migrants.

*DTM Sudan adopts the WHO global estimate that approximately 15% of the total population are persons with disabilities (PwD).