

EMERGENCY EVENT TRACKING: Beida, West Darfur

UPDATE 1: 2 June 2020

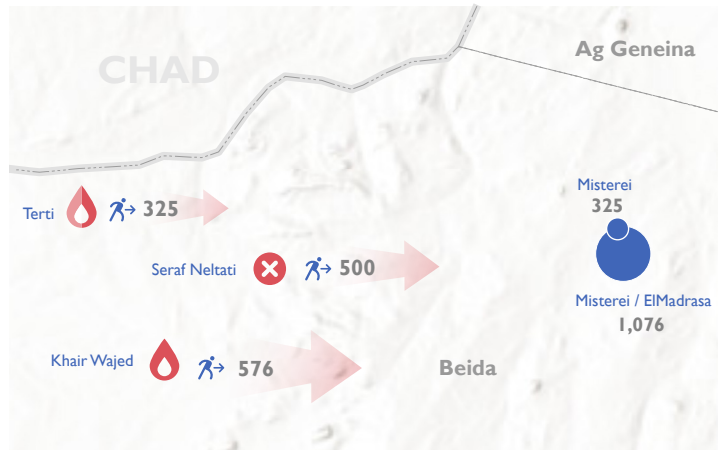
Data collection: 30 May 2020

The DTM Emergency Event Tracking (EET) is deployed to track sudden displacement and population movements, provide more frequent updates on the scale of displacement and quantify the affected population when needed. As a subcomponent of the new Mobility Tracking methodology in Sudan ([Round Zero](#)), and activated on a need basis, EET utilises a broad network of key informants to capture best estimates of the affected population presence per location – a useful tool for humanitarian response planning and design.

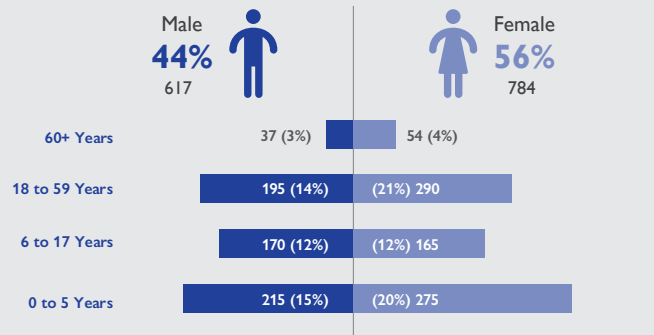
Event Overview



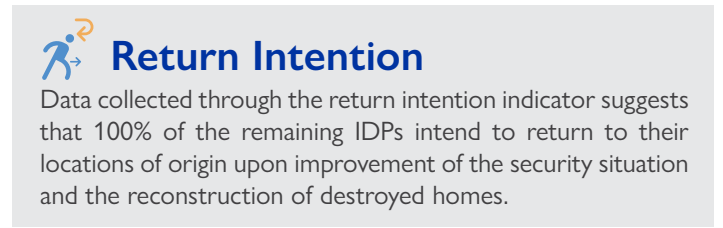
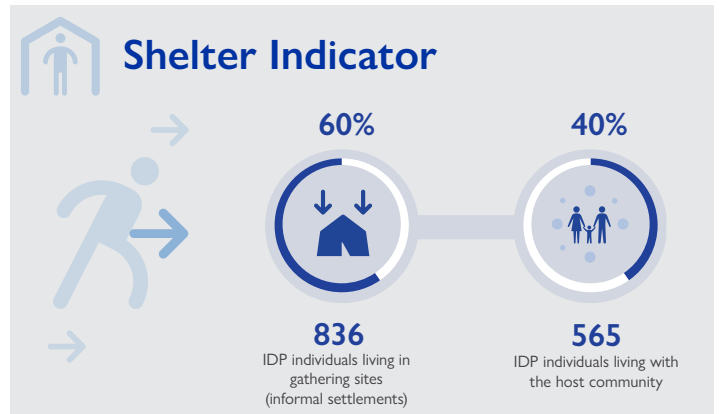
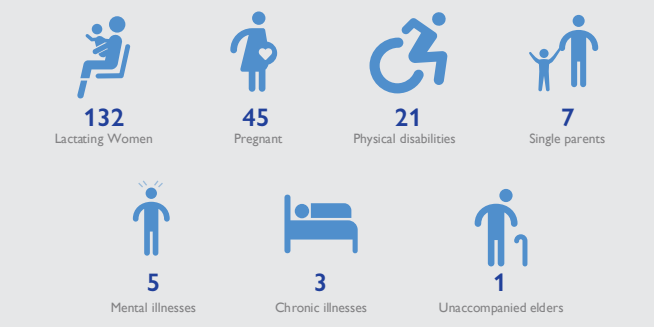
DTM teams activated EET to monitor the displacement of individuals affected by inter-communal clashes between Arab and Masalit tribes throughout Beida locality, West Darfur on 16-17 May 2020. Affected individuals were displaced to Misterei in Beida locality and originated from Khair Wajed, Seraf Neltata and Terti. The first EET update estimates a total number of 1,401 individuals (261 households) situated in Misterei. Reports from the field indicate that several houses were burned as well as significant losses of livestock, the abduction of 26 persons and killing of two.



Demographics



Vulnerabilities



IOM DISCLAIMER
 The opinions expressed in the report are those of the authors and do not necessarily reflect the views of the International Organization for Migration (IOM). The designations employed and the presentation of material throughout the report do not imply the expression of any opinion whatsoever on the part of IOM concerning the legal status of any country, territory, city or area, or of its authorities, or concerning its frontiers or boundaries.
 IOM is committed to the principle that humane and orderly migration benefits migrants and society. As an intergovernmental organization, IOM acts with its partners in the international community to: assist in the meeting of operational challenges of migration; advance understanding of migration issues; encourage social and economic development through migration; and uphold the human dignity and well-being of migrants.