

EMERGENCY EVENT TRACKING

Data collection: 3 April 2023



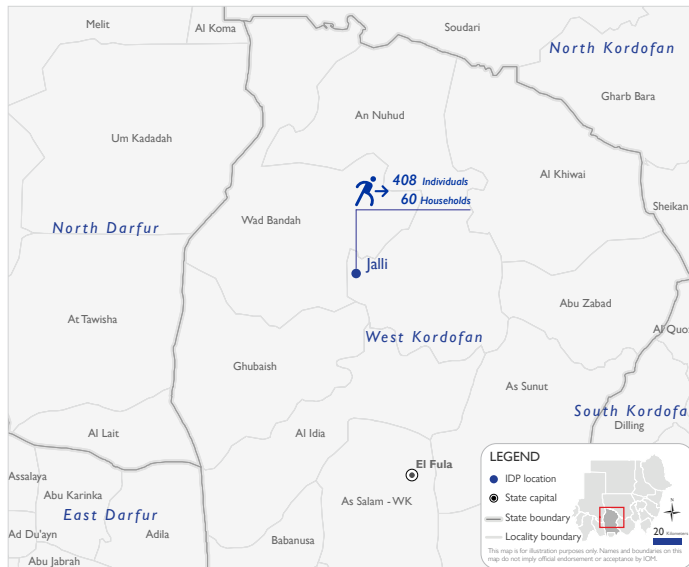
As a subcomponent of the Mobility Tracking methodology (Round Five), the Emergency Event Tracking (EET) tool is deployed to track sudden displacement, provide more frequent updates on the scale of displacement, and quantify the affected population when needed.

## Event Overview

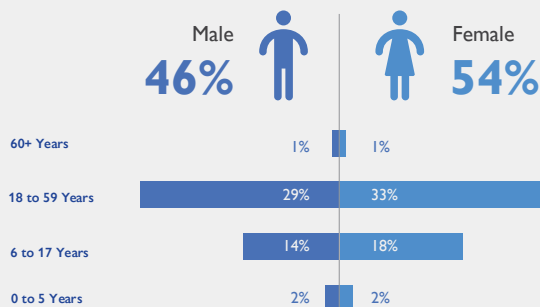


On 25 March 2023, a fire incident was reported in Jalli village in An Nuhud locality, West Kordofan. Reportedly, 60 houses were completely burnt down due to the fire and four were partially damaged. The first EET update estimates a total number of 408 individuals (60 households) are currently seeking shelter with relatives or neighbours within Jalli village in An Nuhud locality, West Kordofan.

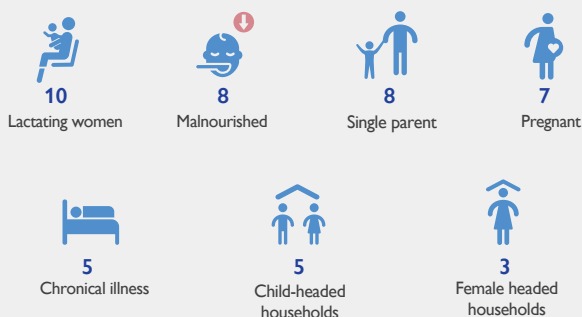
Field teams report that there are no deaths or injuries due to the fire. All personal belongings of affected households (including livestock) were reportedly lost during the incident. Field teams estimate that the entire IDP caseload are Sudanese nationals (100%). At least 46 cases of additional vulnerabilities in need of assistance and support were identified by key informants through DTM's Protection indicator. Additionally, DTM Sudan estimates that there are approximately 61 persons with disabilities among the IDP caseload.\* Based on a ranking scale, the three priority needs across the caseload are Emergency Shelter, Non-Food Items, and Nutrition.



## Demographics



## Vulnerabilities



## IOM DISCLAIMER

The opinions expressed in the report are those of the authors and do not necessarily reflect the views of the International Organization for Migration (IOM). The designations employed and the presentation of material throughout the report do not imply the expression of any opinion whatsoever on the part of IOM concerning the legal status of any country, territory, city or area, or of its authorities, or concerning its frontiers or boundaries.

IOM is committed to the principle that humane and orderly migration benefits migrants and society. As an intergovernmental organization, IOM acts with its partners in the international community to: assist in the meeting of operational challenges of migration; advance understanding of migration issues; encourage social and economic development through migration; and uphold the human dignity and well-being of migrants.

\*DTM Sudan adopts the WHO global estimate that approximately 15% of the total population are persons with disabilities (PwD).