

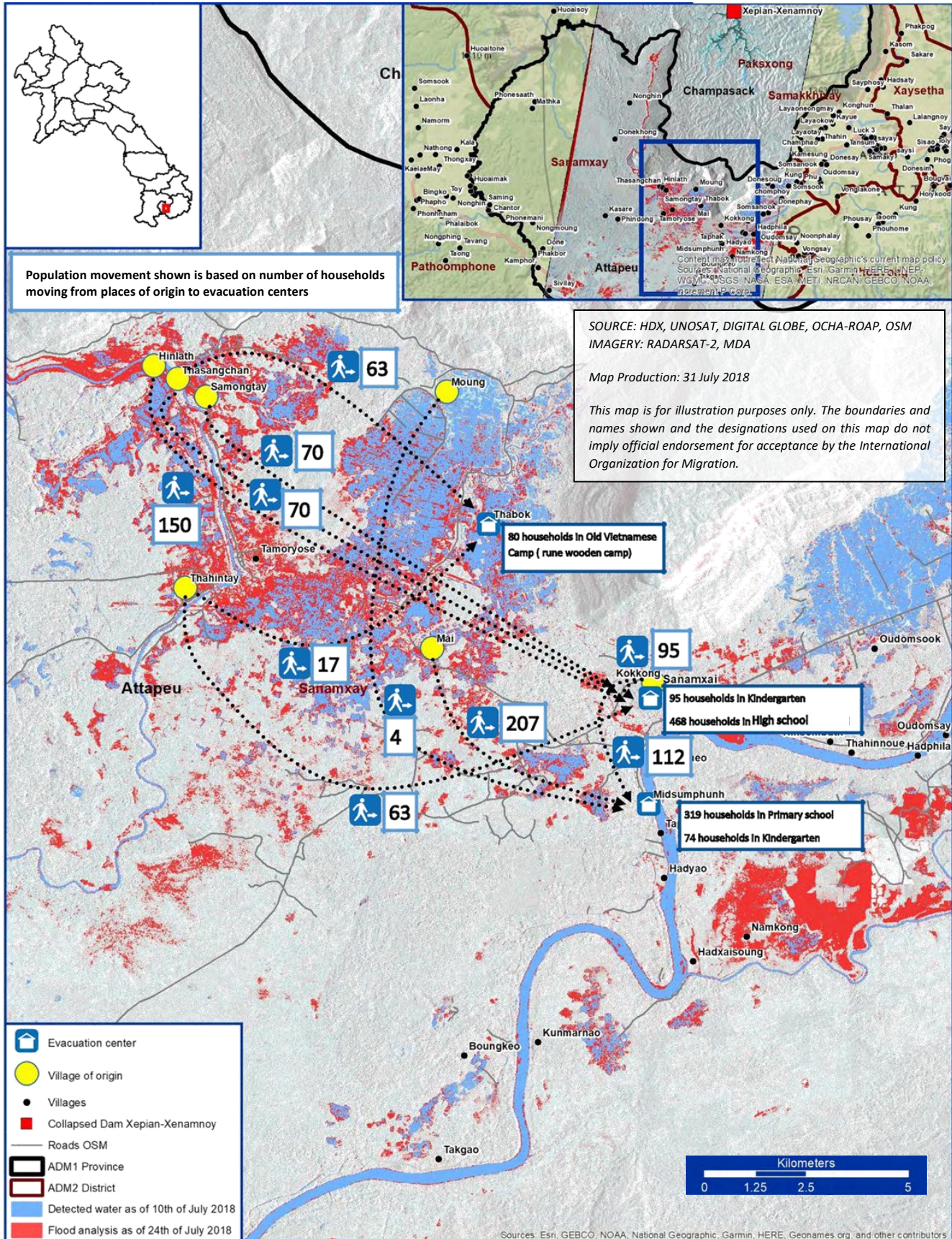
Lao People's Democratic Republic

Flooding in Sanamxai District

Temporary Shelter Report #1 (31 July 2018)



International Organization for Migration (IOM)
The UN Migration Agency



Overview of the Report

IOM deployed staff to support the Ministry of Health (MOH) Health and WASH cluster assessments to focus specifically on information regarding the camps / temporary shelters for those displaced by the flooding in Attapeu, Sanamxai District.

This does not represent the total number of displaced nor the total needs, but a rapid assessment of findings based on initial observations, interviews with local leadership, affected persons, and the Government.

IOM will continue to support additional data gathering. This report is just a first analysis of the raw data from the field for use in planning interventions in Attapeu Province with the MoH and other partners.



1,336 IDP Households



5,319 IDP Individuals



5 sites

Used as temporary shelters



Basic Demographics of the Sites with Place of Origins of IDPs

Site Location: Village	Location of Informal Site	Place of Origin of IDPs	Number of IDPs (Households)	Number of IDPs (individuals)	Total Number of Households	Total Number of Individuals
Sanamxai	Kindergarten	Kokkong	95	415	95	415
Sanamxai	High School	Thahintay	178	1,068	468	2,738
		Hinlath	150	900		
		Thasangchan	70	420		
		Samongtay	70	350		
Mitsumphu nh	Primary school	Kokkong	112	517	319	1,499
		Mai	207	982		
Mitsumphu nh	Kindergarten	Unknown Location	70	180	74	215
		Moung	4	35		
Thabok	Old Vietnamese Camp (rune wooden camp)	Thasangchan	63	380	80	452
		Thahintay	17	72		
TOTAL					1,336	5,319

Site 1: Sanamxai Kindergarten



95 IDP Households (415 individuals)

Primary (reported) needs:

- **Water** for bathing and cooking
- Additional **shelter space** (due to overcrowding)
- **Toilets**
- **Sleeping items**
- **Cooking utensils**
- **Mosquito nets**
- **Drainage**



✓ Site management provided through **national authorities**

▪ Type of site: kindergarten

▪ < 25% living in tents

▪ >75% living indoors

▪ Shelters are **overcrowded**

▪ Number of functioning toilets on site: 6 – **recommend an additional 15 toilets**

▪ Bathing facilities missing

▪ Limited water on site but **insufficient water storage equipment**

▪ **No separation of toilets and bathing facilities** for women and men



Major health issues reported:

- **Diarrhea**
- **Skin rashes**
- **Flu**



✓ **Food provided** on site by various actors

▪ Food distribution is not coordinated and irregular



▪ **No supplementary feeding** provided for children, pregnant and lactating women



Site 2: Sanamxai High School



468 IDP Households (2,738 individuals)

Primary (reported) needs:

- **Toilets**
- **Water** for bathing and cooking
- Additional **shelter space** (due to overcrowding)
- **Sleeping items**
- **Cooking utensils**
- **Mosquito nets**



✓ Site management provided through **national authorities**

- Type of site: school



- < 25% living in tents

- >75% living indoors

- Shelters are **overcrowded**



- Number of functioning toilets

- on site: 3 – **recommend an additional 133 toilets**

- **No separation** of toilets and bathing facilities for women and men

- Limited water on site but **insufficient water storage** equipment



Major health issues reported:

- **Diarrhea**
- **Sleeping problems**



✓ **Food provided** on site by various actors

- Food distribution is not coordinated and irregular



- **No supplementary feeding** provided for children, pregnant and lactating women



✓ **Security provided** on site

✓ **No security incidents** reported

- No registration took place

Site 3: Mitsumphunh Primary School



319 IDP Households (1,499 individuals)

Primary (reported) needs:

- **Toilets**
- **Rice**
- **Water** for bathing and cooking
- Additional **shelter space** (due to overcrowding)
- **Sleeping items**
- **Cooking utensils**
- **Mosquito nets**
- **Drainage**



✓ Site management provided through **national authorities**

- Type of site: school



- >75% living **indoors**

- Shelters are **overcrowded**



- Number of functioning toilets

- on site: 3 – **recommend an additional 70 toilets**

- Bathing facilities are outdoor and water availability is limited

- **Insufficient water storage** equipment

- **No separation of toilets and bathing facilities** for women and men



Major health issues reported:

- **Diarrhea**
- **Skin rashes**
- **Infections** (e.g. eyes)
- **Flu**



✓ **Food provided** on site by various actors

- Food distribution is not coordinated and irregular



- **No supplementary feeding** provided for children, pregnant and lactating women



✓ **Security provided** on site

✓ **No security incidents** reported

- No registration took place

Site 4: Mitsumphunh Kindergarten



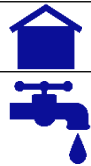
74 IDP Households (215 individuals)

Primary (reported) needs:

- Toilets
- Private living facilities/tents
- Rice
- Water for bathing and cooking
- Blankets
- Cooking utensils
- Mosquito nets
- Drainage



- ✓ Site management provided through **national authorities**
- Type of site: kindergarten



- >75% living **indoors**
- Shelters are **overcrowded**
- Number of functioning toilets on site: 3 – **recommend an additional 8 toilets**
- Bathing facilities outdoor and **limited water available**
- Limited water on site but **insufficient water storage equipment**
- **No separation of toilets and bathing facilities** for women and men



Major health issues reported:

- Diarrhea
- Headaches
- Sleeping problems



- ✓ **Food provided** on site by various actors
- Food distribution is not coordinated and irregular



- **No supplementary feeding** provided for children, pregnant and lactating women



- ✓ **Security provided on site**
- ✓ **No security incidents reported**
- No registration took place

Site 5: Thabok Old Vietnamese Camp



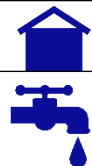
80 IDP Households (452 individuals)

Primary (reported) needs:

- Toilets
- Private living facilities/tents
- Rice
- Water for bathing and cooking
- Blankets
- Cooking utensils
- Mosquito nets
- Drainage



- ✓ Site management provided through **national authorities**
- Type of site: empty building



- >75% living **indoors**
- Shelters are **overcrowded**
- Number of functioning toilets on site: 0
- **Lack of water** for cooking and bathing: current water source from canal is turbid.
- **No separation of toilets and bathing facilities** for women and men



Major health issues reported:

- Diarrhea
- Flu/cold



- ✓ **Food provided** on site by various actors
- Food distribution is not coordinated and irregular



- **No supplementary feeding** provided for children, pregnant and lactating women



- ✓ **Security provided on site**
- ✓ **No security incidents reported**
- No registration took place



Immediate Recommendations and Guidance Support



- Registration of all sites with demographic breakdowns of minimum age and sex (men, women, boys, girls)
- Specific vulnerabilities tracked including unaccompanied children, pregnant and lactating women etc.
- Create camp committees immediately to support management of resources – committees in sectors for Food, Health, WASH, Shelter Maintenance etc.



- Make a map of the site
- Begin decongestion and ensure that all families sleeping in the site are from the affected areas
- Provide tents or tarpaulins and support expansion areas to decongest as much as possible
- Ensure that the most vulnerable remain indoors



- Work with Shelter partner to provide recovery kits to allow people to return



- Provide minimum 1 latrine/toilet per 50 people, but 1 latrine/toilet per 20 people in the ideal scenario
- Separate women's and men's bathing and toilet facilities
- Provide a space for cooking
- Dig drainage to lower risks of dampness and disease



- Register all illnesses immediately and report to health authorities
- Health and hygiene promotion
- Make a referral plan for the ill



- Register all distributions and their contents
- Ensure that children and elderly or other vulnerable receive distribution first



- Request supplementary feeding for children, pregnant and lactating women



- Create a camp security committee
- Register incidents
- Ask for police or military support
- Create a referral plan for cases