



DTM OVERVIEW

The Displacement Tracking Matrix (DTM) is IOM's primary suite of tools used to track and monitor displacement and population mobility in over 60 countries around the world including Sudan. During the month of June 2017, IOM DTM teams conducted **4** field missions, covering **9** sites/villages, to register and verify different caseloads of IDPs, returnees, refugees and affected host communities in the states of North Darfur, Central Darfur, South Darfur and South Kordofan. A total of **12,808** individuals were registered during these missions. Additionally, the DTM teams tracked **748** individuals arriving at different localities in South Kordofan State. In addition, **14,587** returnees have been registered in North Darfur since January 2017. All DTM activities are conducted in collaboration with the Humanitarian Aid Commission (HAC), the Area / Humanitarian Country Team (A/HCT) and partners on the ground.



4 Completed

DTM teams completed **4** registration missions in June, consisting of one mission in North Darfur, one in South Darfur, one in Central Darfur and one in South Kordofan. **9** sites / villages were visited in the **4** missions.

22
DTM Missions
39 sites were visited or planned to be visited in these missions



18 Planned

18 missions are initially planned for July, consisting of **4** in North Darfur, **4** in South Darfur, **4** in West Darfur, **2** in South Kordofan, **2** in Central Darfur and **2** in West Kordofan. More than **30** sites will be visited during these planned missions.

Legend

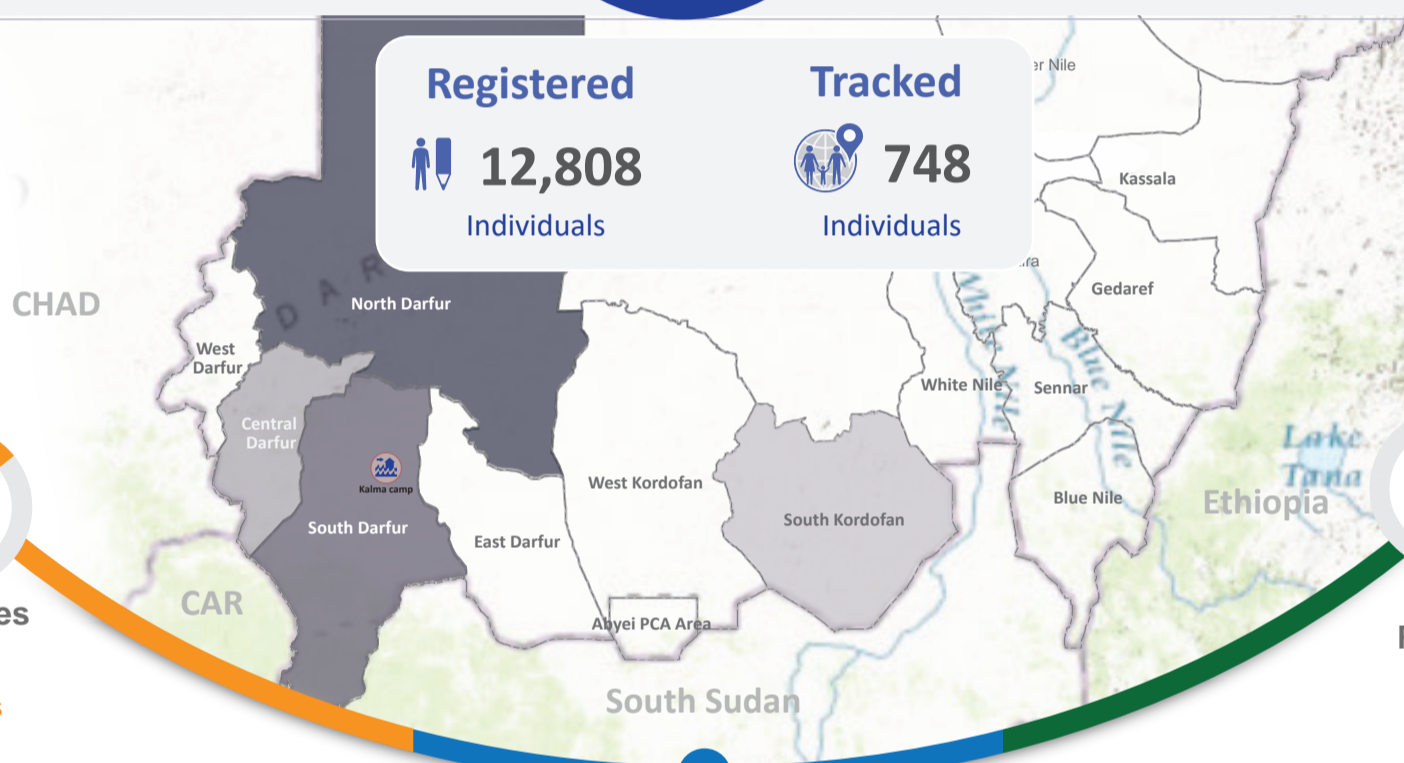
- Total registered population
 - 400
 - 401 - 3,032
 - 3,033 - 4,286
 - 4,287 - 5,090
- State
- International
- Flood affected



Returnees
4,286
Individuals

Registered
12,808
Individuals

Tracked
748
Individuals



The names and boundaries on this map do not imply official endorsement or acceptance by the Government of Sudan or IOM. This map is for planning purposes only. IOM cannot guarantee that this map is error free and therefore we accept no liability for consequential and indirect damages arising from the use of this map product. Sources: Esri, HERE, DeLorme, Intermap, increment P Corp., GEBCO, USGS, FAO, NPS, NRCAN, GeoBase, IGN, Kadaster NL, Ordnance Survey, Esri Japan, METI, Esri China (Hong Kong), Swisstopo, MapmyIndia, © OpenStreetMap contributors, and the GIS User Community



Refugees
400
Individuals



IDPs
8,122
Individuals

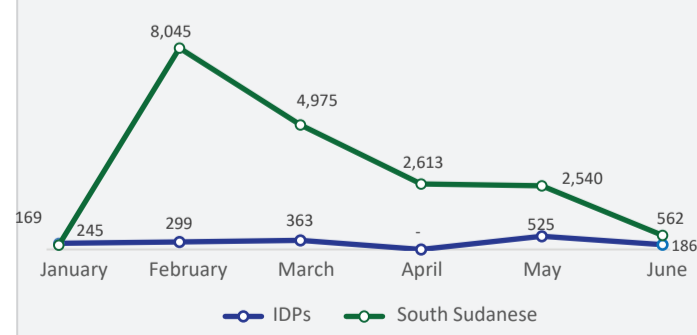
- **763** families composed of **4,286** individuals were registered as returnees in Domaia village in South Darfur.
- An additional **14,587** returnees have been registered in nine localities of North Darfur state since January 2017. During the month of June **1,701** returnees were further registered in these nine localities of North Darfur. This new caseload is not included in the **14,587**, awaiting completion of verification exercise for this caseload which is still under process.
- Refugee returnees were identified in Um Baru, Tina and Kornoi localities of North Darfur. Whereas the returnees registered in Domaia and at other locations in North Darfur were IDP returnees.
- The DTM team in South Kordofan State was trained on the use of electronic data collection utilizing tablets for conducting registrations. Several registration exercises are planned to be conducted in July, jointly with HAC and Voluntary Return and Reintegration Commission in the states of South Kordofan and West Darfur, to register reported old and new caseloads of **33,954** and **17,925** returnees respectively.

- A total of **2,119** households composed of **8,122** IDPs were registered during the month of June; consisting of **5,090** IDPs registered at Shangil Tobay Camp, Dar El Salam locality, North Darfur State and **3,032** IDPs registered in Um Dukhun locality, Central Darfur State.
- From a total of **10,329** reported IDPs, the DTM teams identified and registered **8,122** IDPs, recording a reduction of over **20%** from the reported figures.
- A majority (**95%**) of the IDPs registered in Shangil Tobay Camp, in North Darfur State, were from the old IDPs caseloads (displaced during 2015 and 2016).
- A majority of Um Dukhun's IDPs were displaced during the month of May, and some were displaced in June 2017. The IDPs in Um Dukhun were reported to have been displaced from **8** villages within the locality.

- A total of **400** South Sudanese refugees were registered during the month of June. These South Sudanese refugees were located in four areas of Kadugli.
- The DTM team plans to start with the registration of the pending caseloads in the remaining localities of South Kordofan as soon as the approval from UNDSS is granted.

Tracking of Affected Population in South Kordofan

During the month of June, jointly with HAC in South Kordofan, a total of **186** IDPs and **562** South Sudanese refugees were tracked in different localities of South Kordofan State. The number of South Sudanese refugees tracked in June was considerably lower than the previous months. This is reported to be a result of the roads becoming inaccessible due to the rainy season. As a result a proportionately higher influx of refugees is reported to go towards the White Nile State instead.



Note
The figures of IDPs and South Sudanese refugees shown in the chart above do not represent the number of all the IDPs and refugees in South Kordofan State since the DTM tracking system does not cover the entire State.

Flood Affected Population

The DTM team in South Darfur plans (early July) to register the flood affected population in the Kalma IDP Camp. **1,780** households are reported to have been affected by flash flooding in Sectors 1, 5 and 8 of Kalma Camp. A rapid assessment will be conducted jointly with the registration exercise to identify the urgent needs of the affected population and gaps in services/response.