



©IOM 2022

ETHIOPIA NATIONAL DISPLACEMENT REPORT 12

Site Assessment Round 29 & Village Assessment Survey Round 12: March — April 2022

Publication Date: August 2022



USAID
FROM THE AMERICAN PEOPLE



Humanitarian Aid
and Civil Protection

ADDRESS

International Organization for Migration (IOM)
Special Liaison Office (SLO) Ethiopia
Kirkos Sub City, Woreda 8
YeMez Building (Behind Zequala Building)
P.O.Box 25283 Code 1000
Addis Ababa, Ethiopia.
Tel.: +251 1155 71 707
Website: <http://www.ethiopia.iom.int>

For more information, kindly contact DTM Ethiopia at dtmethiopia@iom.int.

DISCLAIMER

The opinions expressed in the report are those of the authors and do not necessarily reflect the views of the International Organization for Migration (IOM). The designations employed and the presentation of material throughout the report do not imply the expression of any opinion whatsoever on the part of IOM concerning the legal status of any country, territory, city or area, or of its authorities, or concerning its frontiers or boundaries.

IOM is committed to the principle that humane and orderly migration benefits migrants and society. As an intergovernmental organization, IOM acts with its partners in the international community to: assist in the meeting of operational challenges of migration; advance understanding of migration issues; encourage social and economic development through migration; and uphold the human dignity and well-being of migrants.

COPYRIGHT

All rights reserved. No part of this publication may be reproduced, stored in a retrieval system, or transmitted in any form or by any means, electronic, mechanical, photocopying, recording, or otherwise without the prior written permission of the publisher.



CONTENTS

Introduction	i-ii
---------------------------	-------------

Section I

Key Findings: Site Assessment	2
--	----------

Methodology	3
--------------------------	----------

Overview of Displacement

National level	4-5
-----------------------------	------------

Regional level	6-16
-----------------------------	-------------

Section 2

Key Findings: Village Assessment Survey	18
--	-----------

Methodology	19
--------------------------	-----------

Overview of Return

National Level	20
-----------------------------	-----------

Regional Level	21-29
-----------------------------	--------------

Annex A

Summary Table of Displacement.....	30-39
---	--------------

Annex B

Summary Table of Return.....	40-42
-------------------------------------	--------------

INTRODUCTION

Background: Population Mobility and Internal Displacement in Ethiopia

Ethiopia faces significant internal displacement. In 2018, Ethiopia recorded the third highest number of new displacements worldwide, with 3,191,000 internally displaced persons (IDPs) identified.¹ A significant portion of these displacements are conflict-induced, largely related to ethnic and border-based disputes. Old tensions such as the contestation of the Oromia-Somali regional border which first flared up in 2017 continue to persist, while new conflicts have also emerged. Conflict broke out in 2016 over the administrative designation of then Konso woreda in SNNP region; in 2018 Konso was formally recognized as a zone, but in the years since conflict has only continued. In April and later in June 2018, conflict which was aggravated by competition for land and resources broke out between Gedeo and Guji Oromo tribes in West Guji. It is estimated that by August 2018, 748,499 IDPs were displaced from the Gedeo-West Guji conflict alone.² In September 2020 frequent attacks from unidentified armed groups (UAGs) on the border of Benishangul Gumz region led to increasing displacement to Awi zone in Amhara region. This continued to intensify and in January 2021 displacement reached a peak of 76,000 at its height.³

In early November 2020, the regional party of Tigray allegedly attacked the Northern Command of Ethiopia's National Defense Force in Mekelle, Tigray region, prompting a military offensive from the federal government of Ethiopia. Following this, conflict broke out in the North of Ethiopia resulting in significant displacement. After a change of administration in Tigray region at the end of June 2021, the conflict moved further south into Afar and Amhara regions but began to subside around January 2022.

In mid-April 2021, conflict broke out in Ataye City Administration in North Shewa zone of Amhara region and the surrounding areas, which led to mass displacement in the zone. Estimated displacement following the conflict, according to government sources, reached 310,000 IDPs at its peak. This brought displacement in Ethiopia to 4.5 million IDPs as of February 2022.

Ethiopia is also riddled with climate-induced displacement mainly caused by drought and floods. Beginning in 2015, Ethiopia faced one of the strongest onsets of El Niño, a periodic heating of the eastern tropical Pacific, which reduced the *kiremt* rainfall⁴ and successively resulted in drought in the Southern and Southeastern parts of the country.⁵ Somali region is particularly prone to climate induced displacement. In 2021, both the rainy seasons failed to provide sufficient rain to the region, which has caused a shortage of pastureland, water and food and led to an increase in pastoralists migrating in search of water and pasture for their livestock. According to the Somali Region Drought Response Plan published in December 2021, many of the early warning triggers including poor performance of rains, crop failure and shortage of water for both humans and animals have anecdotally been observed in the region.⁶ Floods are another major cause of climate-induced displacement. While certain areas experienced reduced rainfall, others experienced heavy rainfall and floods during the rainy season in many low lying areas. According to predictions from the Ethiopia Meteorological Agency there is a high potential for upcoming severe flooding in the lowlands, and the region continues to cope with the lasting impact of the damage from the overflowing of the Shabelle, Ganale, and Dawa rivers in 2020 which damaged crops and has also contributed to food insecurity in the region.⁷

¹ Internal Displacement Monitoring Centre, 2019. *Global Report on Internal Displacement (GRID) 2019 Report*. Available at: <http://www.internal-displacement.org/sites/default/files/publications/documents/2019-IDMC-GRID.pdf>.

² Displacement Tracking Matrix (DTM), 2018. *Ethiopia — Gedeo/West Guji Rapid Response Assessment Round 2 (11 — 23 August 2018)— Host Community Dataset*. Available at: <https://displacement.iom.int/datasets/ethiopia-%E2%80%94-gedeowest-guji-rapid-response-%E2%80%94-host-community-dataset-%E2%80%94-site-assessment-%E2%80%94-round>.

³ Displacement Tracking Matrix (DTM), 2021. *Ethiopia — National Displacement Report (March - April 2021)*. Available at: <https://displacement.iom.int/reports/ethiopia-%E2%80%94-national-displacement-report-8-march-%E2%80%94-april-2021?close=true>.

⁴ Kiremt rain is the summer rain that normally lasts between June to September. This rain is crucial for the main meher harvest. Conversely, the belg rain is the spring rain that usually spans between March to August.

⁵ USAID, 2016. *El Niño in Ethiopia 2015 – 2016: A Real-Time Review Of Impacts And Responses*. Available at: <https://www.agri-learning-ethiopia.org/wp-content/uploads/2016/06/AKLDP-El-Nino-Review-March-2016.pdf>.

⁶ Somali Region Multi-Sector Operational Drought Response Plan, December 2021.

⁷ Ibid.

Adding to the high mobility landscape of Ethiopia is the number and rate of returns. Following the reduction in conflict in January 2022 in many parts of Afar and Amhara regions affected by the Northern Ethiopia Crisis, returns have begun which can be seen in the +422% increase in returns in Afar region and +584% increase in Amhara region in January and February 2022. The increase is mainly due to mass returns in North Wollo (494,317 returning IDPs), North Shewa (484,690 returning IDPs) and South Wollo (294,774 returning IDPs) zones in Amhara region.⁸

In March 2020, the Ministry of Health confirmed the first COVID-19 case in Ethiopia. Since then, the number of confirmed COVID-19 cases has increased to 468,770 cases as of 1 March 2022.⁹ The spread of COVID-19 and regulations to curb it has caused unemployment and has exacerbated the food insecurity situation in the country.

IOM Population Observation in Ethiopia

In order to capture population mobility and internal displacement in Ethiopia, IOM's Displacement Tracking Matrix (DTM) is deployed to track internally displaced persons (IDPs), returning IDPs, migrants and returned migrants. IOM entered into partnership with the Ethiopia Disaster Risk Management Commission (EDRMC) in August 2016, and has since been regularly implementing DTM assessments in Ethiopia since September 2016.

DTM tools that are active in Ethiopia, include a quarterly Site Assessment (SA) which focuses on tracking internal displacement and a quarterly Village Assessment Survey (VAS) aimed at tracking returns. SA covers areas where there are reports of 20 or more IDP households, whereas VAS covers areas where there are reportedly 20 or more returning IDP households.

Figure 1 illustrates DTM's coverage of its SA and VAS tools. The areas in blue represent areas that were exclusively covered by SA, while the areas in yellow represent areas that were only covered by VAS. The areas in green represent areas where both SA and VAS were deployed. The areas covered in red stripes represent areas that were inaccessible due to operational constraints, while the yellow with red stripes represents areas inaccessible due to security and environmental factors.

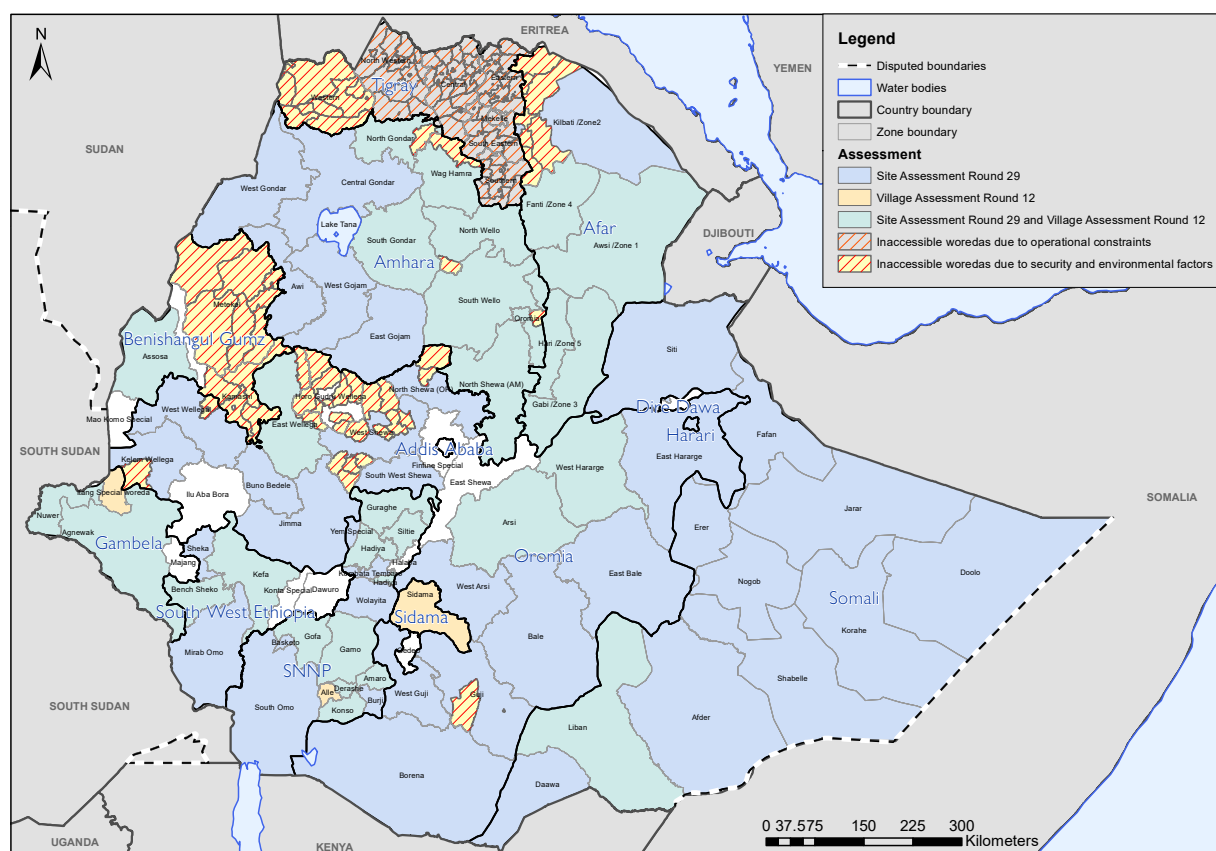


Figure 1: Geographic coverage of DTM assessments in March and April 2022.

⁸ Displacement Tracking Matrix (DTM), 2022. *Ethiopia — National Displacement Report 11 (December 2021 — February 2022)*. Available at: <https://dtm.iom.int/reports/ethiopia-%E2%80%94-national-displacement-report-11-december-2021-%E2%80%94-february-2022-1>.

⁹ Ministry of Health, Ethiopia, 2021. Available at: <http://www.moh.gov.et/ejcc/>.

Section I

Site Assessment (SA)

tracking internal displacement

KEY FINDINGS — SITE ASSESSMENT



2,158 sites covered



405 inaccessible sites*

Internally Displaced Persons (IDPs) — Nationwide



2,759,739 individuals*



532,889 households*



**-38.8% decrease in IDPs since National Displacement Report 11*
(where there were 4,509,081 IDPs*)**

Top 3 Reasons for Displacement



**1,781,460 conflict displaced IDPs
(64.6%) in 1,597 sites**



**581,952 drought displaced IDPs
(21.1%) in 355 sites**



**150,576 social tension displaced IDPs
(5.5%) in 40 sites**

National Displacement Caseload Overview

REGION	SITE ASSESSMENT (NUMBER OF IDPs)
AFAR	137,413**
AMHARA	529,582
BENISHANGUL GUMZ	28,072**
DIRE DAWA	570
GAMBELA	26,861
HARARI	2,898
OROMIA	754,203
SIDAMA	45,430
SNNP	190,790
SOMALI	1,027,324
SOUTH WEST ETHIOPIA PEOPLES	16,596
GRAND TOTAL	2,759,739

Other reasons for displacement included: Flash Floods (107,816 IDPs), Seasonal Floods (94,118 IDPs), Landslides (24,583 IDPs), Swampy Lands (9,265 IDPs), Strong Winds (4,937 IDPs), Hydropower Projects (4,895 IDPs) and Fire (137 IDPs).

* Due to operational constraints in Tigray region, the region is not included in the Site Assessment Round 29 displacement total for the country. The seemingly significant decrease in the number of IDPs in round 29 is due to the exclusion of Tigray this round.

** Zone 2 in Afar region remains partly inaccessible due to ongoing conflict and insecurity which has likely lowered the number of IDPs reported for the region. Although DTM expanded access in Benishangul Gumz region in this round, access was still limited.

SITE ASSESSMENT METHODOLOGY

IOM Ethiopia employs a series of tools in its DTM. The present methodology refers to the Site Assessment tool which falls under the Mobility Tracking component of the DTM. Data for this tool is collected at the zonal, woreda and site level on a quarterly basis. Since September 2016, IOM Ethiopia has conducted 29 rounds of data collection. The DTM programme is implemented in close collaboration with the Ethiopia Disaster Risk Management Commission (EDRMC) and regional, zonal and woreda counterparts.

IOM's DTM team is composed of 180 field enumerators, under the direct supervision of 15 field focal points, and the overall supervision of the DTM team based at IOM's Addis Ababa Country Office. The data collection methodology is divided into three administrative levels:

Zone level: Data is collected through interviews with key informants from the Disaster Risk Management Office (DRMO), community representatives, and the education and health offices. This data includes the estimated number of displaced individuals, a list of woredas within the zone that hosts displaced persons, reasons for displacement, time of arrival of IDPs and their locations.

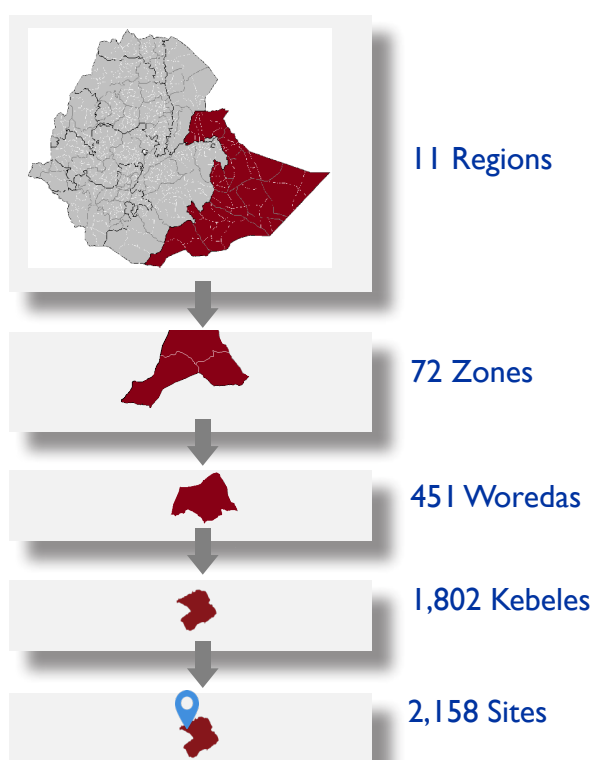


Data collection:
1 March — 18 April 2022

Woreda level: Information is collected through key informants at woreda level and data collected includes number of displaced households and individuals at woreda level, site typology and approximate locations of identifiable displacement sites among other indicators. The information is used to plan the roll out of the Site Assessment.

Site level: In-depth Site Assessments capture detailed information through focus group discussions, key informant interviews and direct observation. The focus group discussions are made up of 7 individuals comprising of male, female, elderly and youth IDP representatives. The Site Assessment is conducted at sites where there are 20 IDP households or more. Data on available services by sector, accessibility constraints, exact type, location and name of the site, place of origin of IDPs, estimated size and type of the site and most common type of shelter are captured. Age and gender disaggregation for the site is extrapolated using a demographic calculator tool based on the age range and sex of the household members. A total of 30 IDP households are sampled at each site. However, all households are sampled for sites where there are fewer than 30 IDP households.

Coverage of this round



405 Inaccessible Sites

In round 29, 405 sites were inaccessible. 331 sites had insecurity issues, mainly in East Wallaga, West Wallaga, West Guji, Guji, and Kilbati (Zone 2) zones. 73 sites were inaccessible due to road issues in Gofa, Bench Sheko, Dawa, Basketo, Liban, and Wolayita, and 1 site was inaccessible due to flooding in Korahe zone.

OVERVIEW OF DISPLACEMENT

National Level

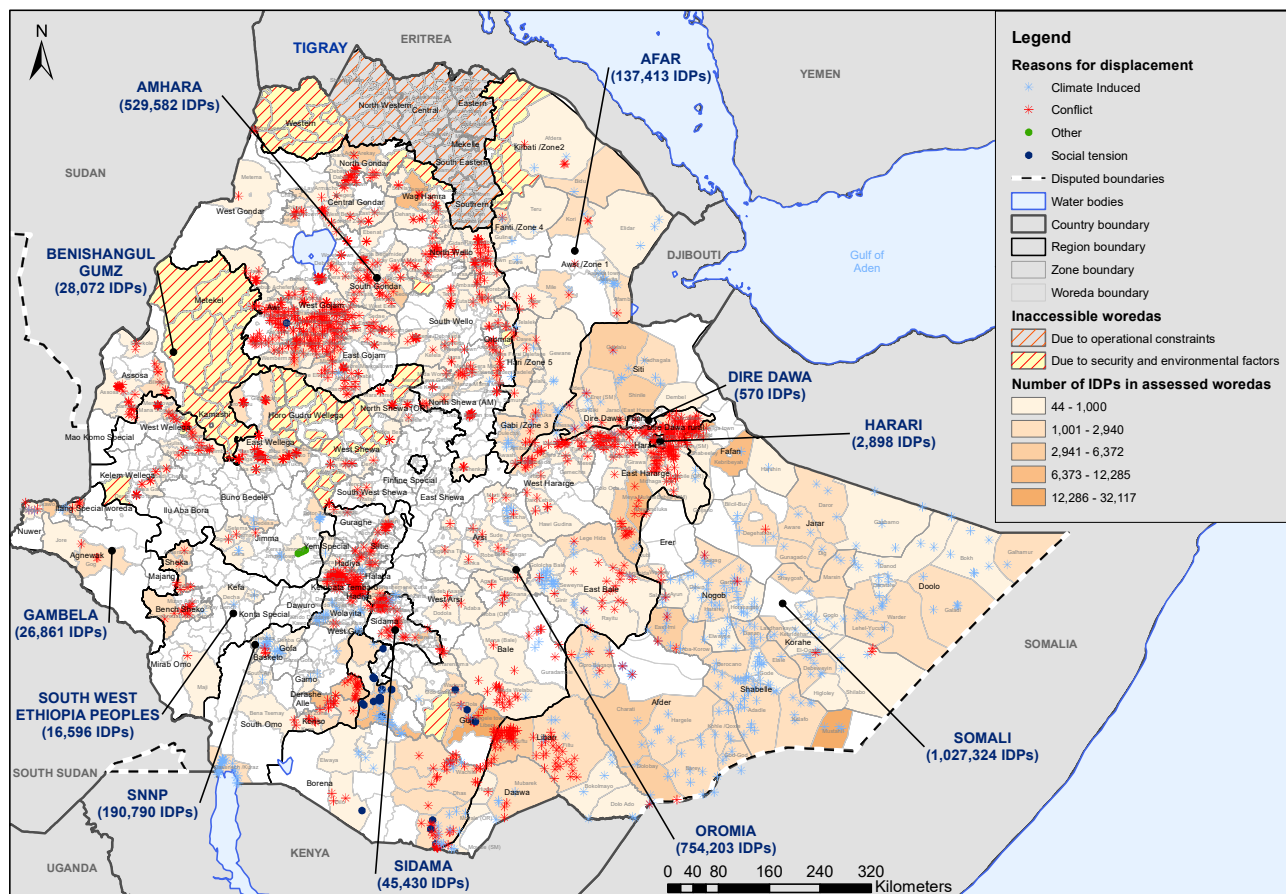


Figure 2: The displacement caseload in Ethiopia based on data collected March to April 2022 from the Site Assessment.

According to data collected through the Site Assessment round 29 in March and April 2022, 2.75 million IDPs (532,889 households) were internally displaced across 2,158 accessible sites in Ethiopia. This reflects a -38.8% decrease of 1,749,342 IDPs compared to the previous round of data collection in December 2021 and January 2022 mainly due to returns and operational constraints limiting coverage in Tigray region.

The gender breakdown of IDPs is almost equal with 1,365,791 males (49.5%) and 1,393,948 females (50.5%). Conflict remains the primary cause of displacement and displaced 1.78 million IDPs (64.6%), followed by drought which displaced 581,952 IDPs (21.1%), social tension which displaced 150,576 IDPs (5.5%), flash floods which displaced 107,816 IDPs (3.9%), seasonal floods which displaced 94,118

IDPs (3.4%), landslides which displaced 24,583 IDPs (<1%), swampy land which displaced 9,265 IDPs (<1%), strong winds which displaced 4,937 IDPs (<1%), hydropower projects which displaced 4,895 IDPs (<1%) and fire which displaced 137 IDPs (<1%). There was a notable increase in displacement caused by drought particularly in Shabelle, Liban and Nogob zones in Somali region.

Factors preventing return as cited by respondents include lack of livelihoods in 1,667 sites (80.8%) and houses damaged or destroyed in 1,591 sites (77.1%), followed by a lack of food in 1,446 sites (70.1%).

The preferred durable solution of the majority of IDPs is local integration in 1,129 sites (52.3%), followed by return in 604 sites (28%), relocation in 424 sites (19.6%) and unknown in 1 site (<1%).

National Displacement Timeline

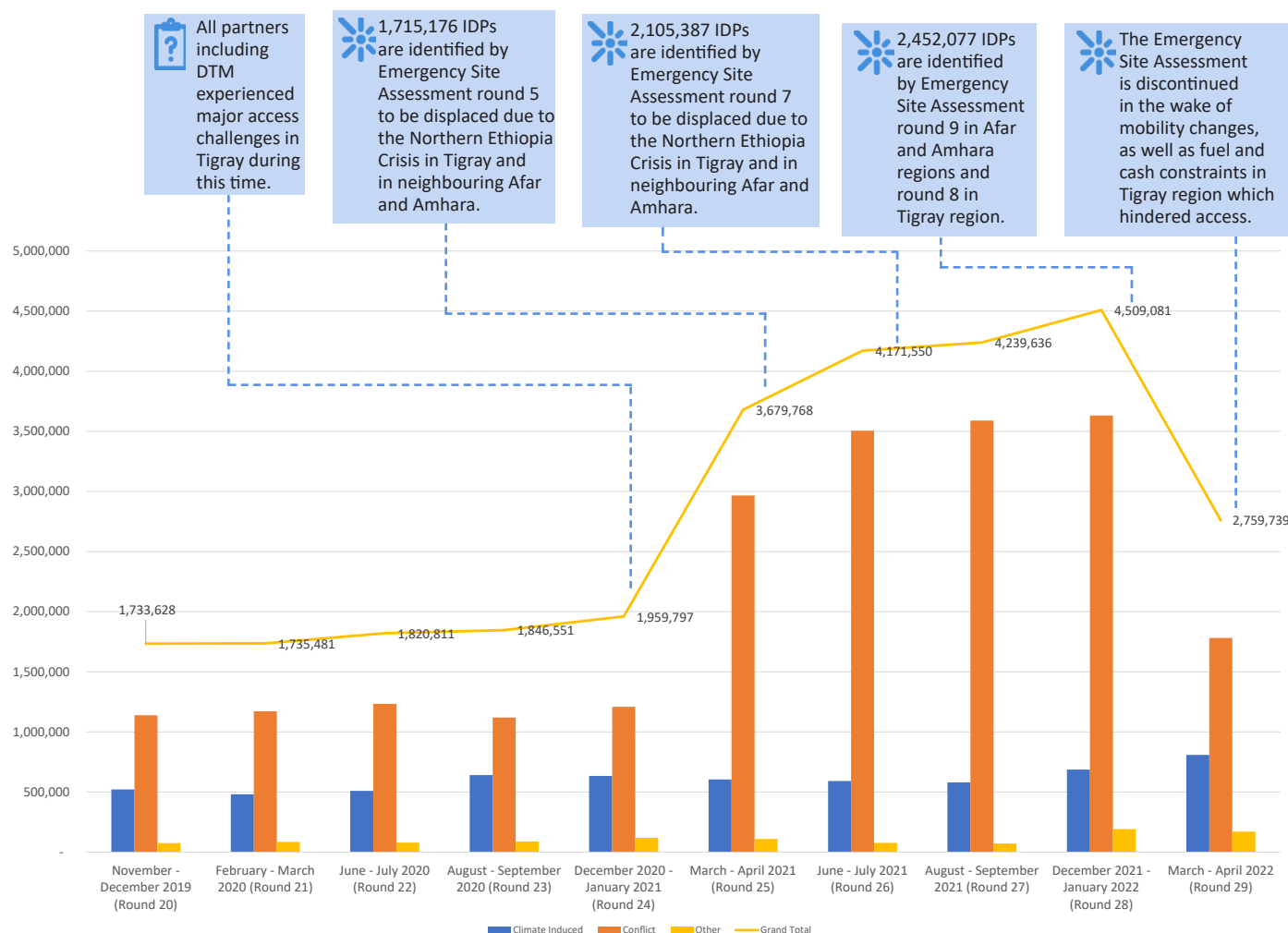


Figure 3: Number of IDPs identified nationwide by DTM since November - December 2019 (SA round 20). Round totals include displacement data captured through previously conducted Rapid Response Assessments and the Emergency Site Assessments.

IOM Ethiopia has been collecting data on internal displacement via its Site Assessment tool for 29 rounds now. Round 20 (November-December 2019) and round 21 (February-March 2020) experienced increases in the number of IDPs to 1.73 million IDPs and 1.74 million IDPs respectively.

In round 22 (June-July 2020), the total number of IDPs increased to 1.82 million largely explained by the new coverage of SNNP and Sidama regions which captured an additional 93,982 IDPs. There was only a marginal increase in round 23 (August-September 2020) to 1.84 million IDPs. In round 24 the number of IDPs increased to 1.95 million IDPs. In round 25 (March-April 2021), the total number of IDPs increased to 3.7 million. This increase was due to the 1.7 million IDPs displaced by the Northern Ethiopia Crisis and identified through Emergency Site Assessment (ESA)

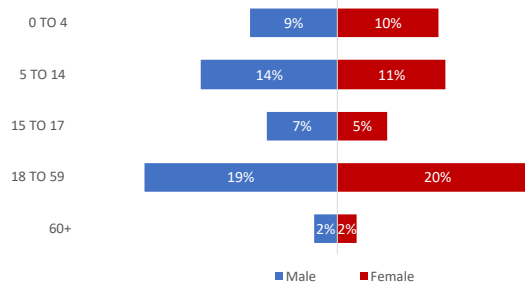
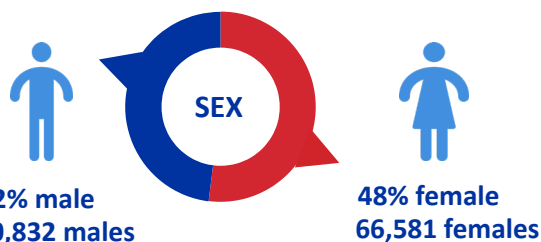
round 5.

In round 28 of Site Assessment carried out in December 2021 and January 2022, the number of IDPs increased to 4.5 million IDPs throughout the country including 2.45 million IDPs displaced by the Northern Ethiopia Crisis identified through Emergency Site Assessment (ESA) round 9 (January - February 2022) in Afar and Amhara regions and ESA round 8 (August 2021) in Tigray region. Since then the ESA was discontinued, and Site Assessment was carried out nationwide including in Afar and Amhara regions. It should be noted that due to operational constraints, figures for Tigray region are not included in Site Assessment round 29. As of Site Assessment round 29, the total number of IDPs nationwide has dropped to 2.75 million IDPs, following returns and operational constraints.

Afar



Sex and age breakdown of IDPs



25,039 households comprising 137,413 IDPs were identified in 66 sites in Afar region. These figures represent a decrease of 37,851 IDPs (-21.60%) since the previous round 28 (December 2021 - February 2022). The reduction is mainly due to the closure of 14 IDP sites, where IDPs have left the sites due to the ongoing drought and a lack of access to services. Many of these IDPs are on the move towards the Awash River, springs and locations with water trucking to cope with the drought. While there was still active conflict in Zone 2 (Kilbati), the number of IDPs displaced due to conflict increased for Zone 2 (Kilbati) in this round due to slight improvements in access coverage. However, 6 woredas in Zone 2 (Kilbati) specifically Aba Ala, Berahile, Dalol, Erebt, Koneba and Megale remained inaccessible during the round primarily due to conflict, and it is likely that there are a considerable number of conflict IDPs there that could not be identified. There was also an increase seen in Zone 3 (Gabi) due to new displacements on the border with Somali region which were driven by a fear of potential conflict. Though conflict was the primary reason for displacement in Afar region (97,527 or 71%), 28,212 IDPs were also displaced by flash floods (20.53%) and 6,338 IDPs were displaced by drought (4.61%). Drought as the primary reason for displacement was most reported in Zone 5 (Hari) this round and in the previous round.

Displacement Caseload and Causes of Displacement in Afar

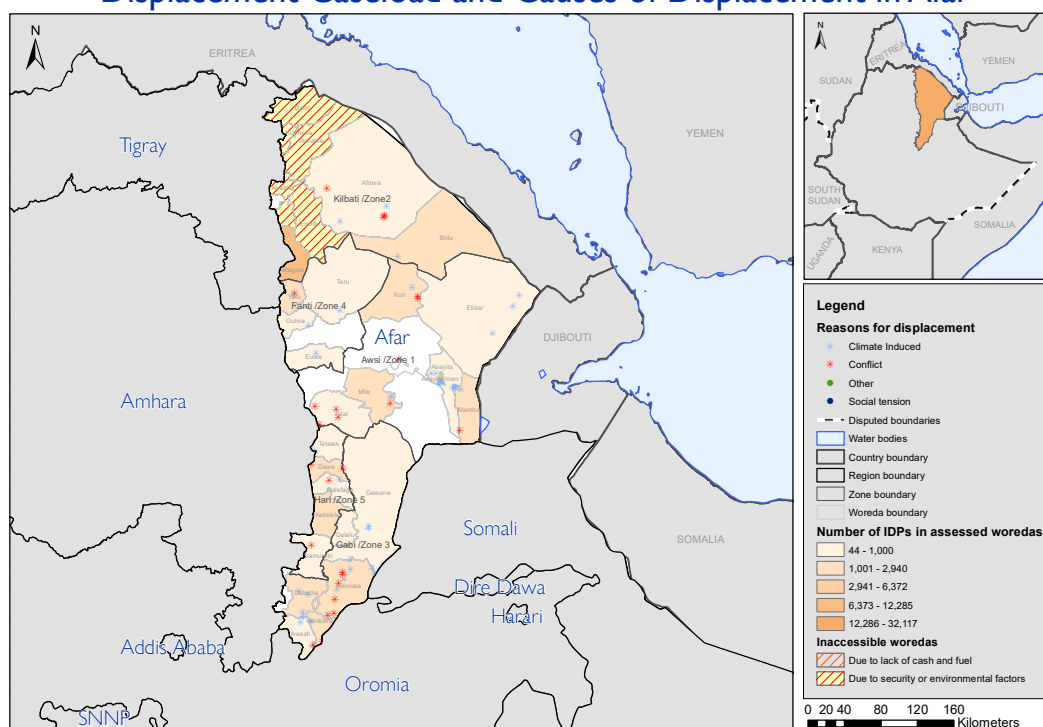


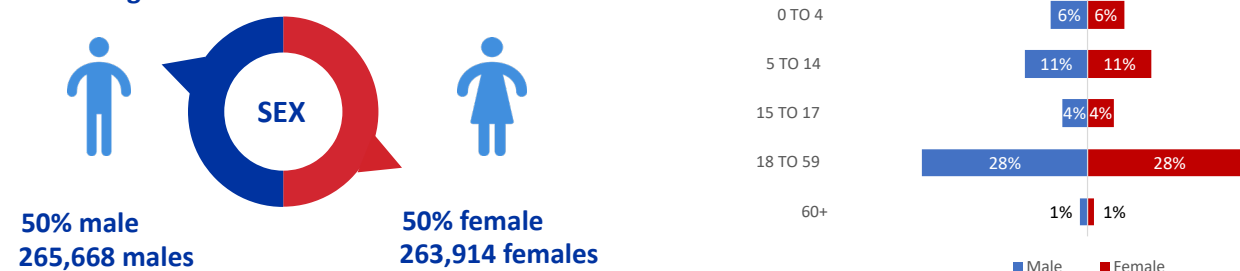
Figure 4: Displacement figures for Afar region based on Site Assessment round 29.

*Zone 2 was largely inaccessible this round due to ongoing conflict and insecurity, which has likely artificially lowered the number of IDPs in the region.

Amhara



Sex and age breakdown of IDPs



132,306 households comprising 529,582 IDPs were identified in 577 sites in Amhara region. These figures represent an increase of 67,053 IDPs (+14.50%) since the previous round 29 (December 2021 - February 2022). The highest concentration of IDPs is now in West Gojam zone with many IDPs originating from Metekel zone in Benishangul Gumz region and from East Wellega and West Wellega zones in Oromia region. Notably, the number of IDPs in West Gojam zone increased by 9% this round following increased conflict in Benishangul Gumz region and both Wellega zones in Oromia region. Most of Wag Hamra zone remained inaccessible due to conflict during the round, and some IDP sites in North Gonder and North Wollo were difficult to reach as well due to insecurity and road accessibility.

Displacement Caseload and Causes of Displacement in Amhara

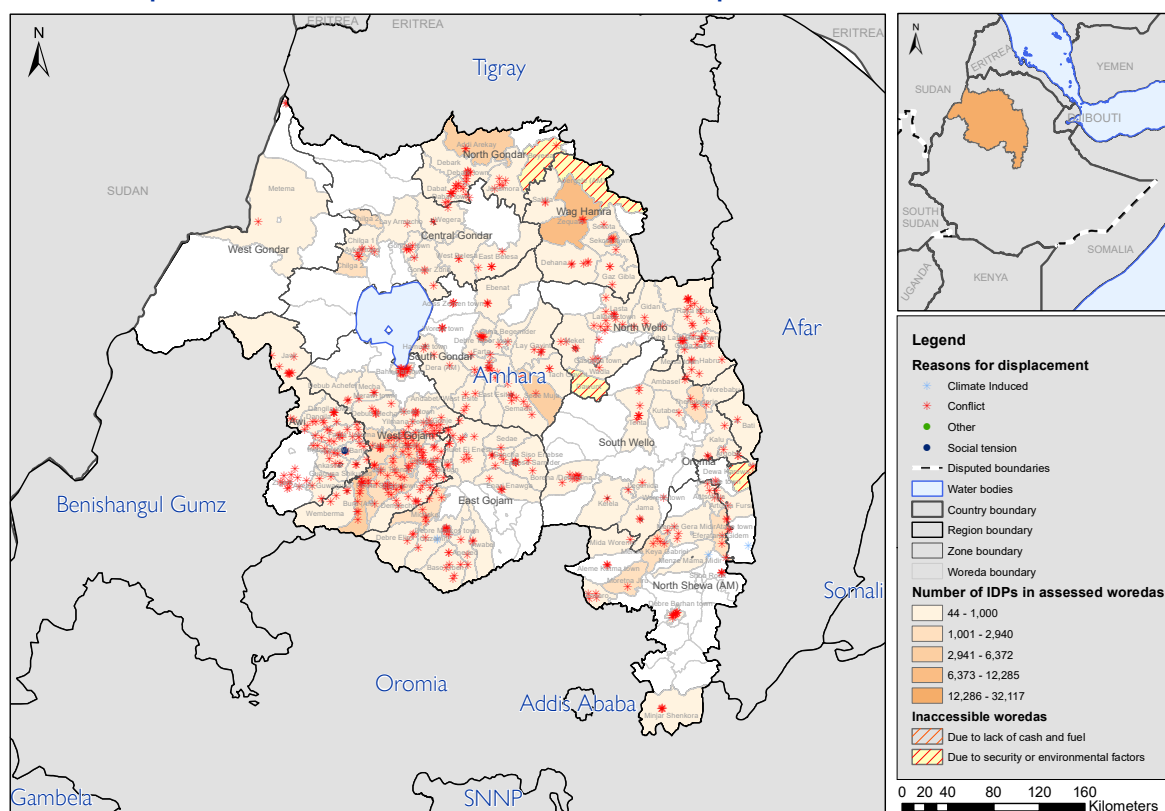
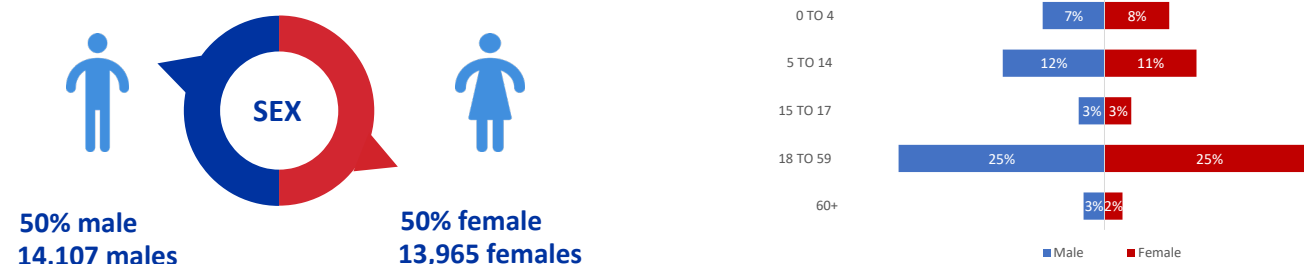


Figure 5: Displacement figures for Amhara region based on Site Assessment round 29.

Benishangul Gumz



Sex and age breakdown of IDPs



6,619 households comprising 28,072 IDPs were identified in 40 sites in Benishangul Gumz region. These figures represent an increase of 1,220 IDPs since round 28 (December 2021 — February 2022). Despite an increase in coverage in Assosa zone, sites in Kemashi and Metekel zones could not be covered due to insecurity. Therefore, it should be noted that the displacement figures for Benishangul Gumz region should be higher. Conflict was the cause of displacement for an estimated 28,072 IDPs, or 100% of the displaced population that could be covered.

Displacement Caseload and Causes of Displacement in Benishangul Gumz

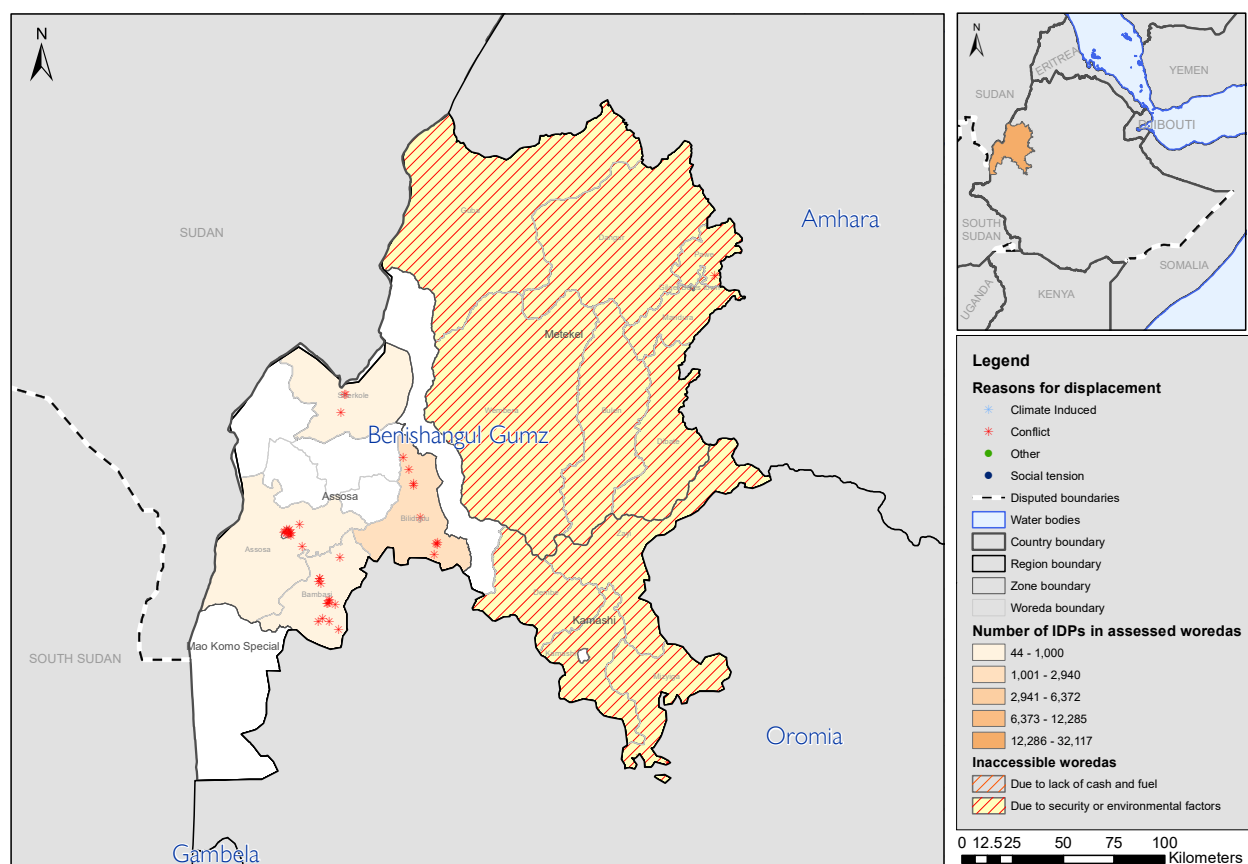


Figure 6: Displacement figures for Benishangul Gumz region based on Site Assessment round 29.

Dire Dawa



Sex and age breakdown of IDPs



114 households comprising 570 IDPs were identified in one site in Dire Dawa. There was no change in the number of IDPs in the region since the previous round 28 (December 2021 — February 2022). There was a significant decrease in the previous round due to the relocation of IDPs from the Millenium Park site in Dire Dawa region to Somali region and the subsequent closure of the site. Conflict was the primary reason for displacement for 570 IDPs, or 100% of the displaced population.

Displacement Caseload and Causes of Displacement in Dire Dawa

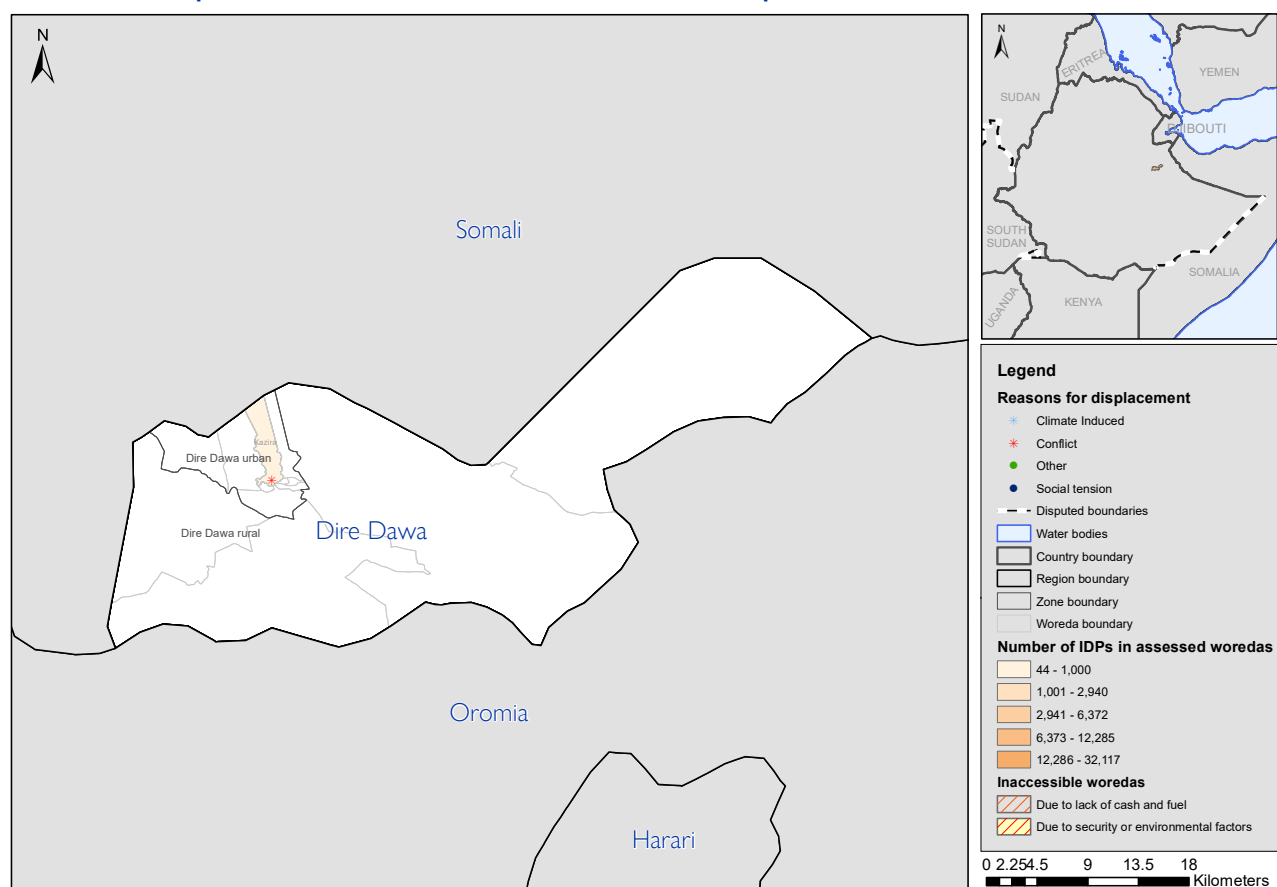


Figure 7: Displacement figures for Dire Dawa in round 29.

Gambela



Sex and age breakdown of IDPs



5,123 households comprising 26,861 IDPs were identified in 15 sites in Gambela region. These figures represent a decrease of 16,948 IDPs (-38.69%) since round 28 (December 2021 — February 2022) despite the opening of one site in Nuer zone this round. The decrease is due to the closure of four sites caused by returns in Nuer zone, as well as two sites that were inaccessible in Nuer zone due to insecurity and road accessibility issues. Conflict was the main reason for displacement for an estimated 19,230 IDPs, or 72% of the displaced population. The remaining 7,631 IDPs (28%) were displaced due to seasonal floods.

Displacement Caseload and Causes of Displacement in Gambela

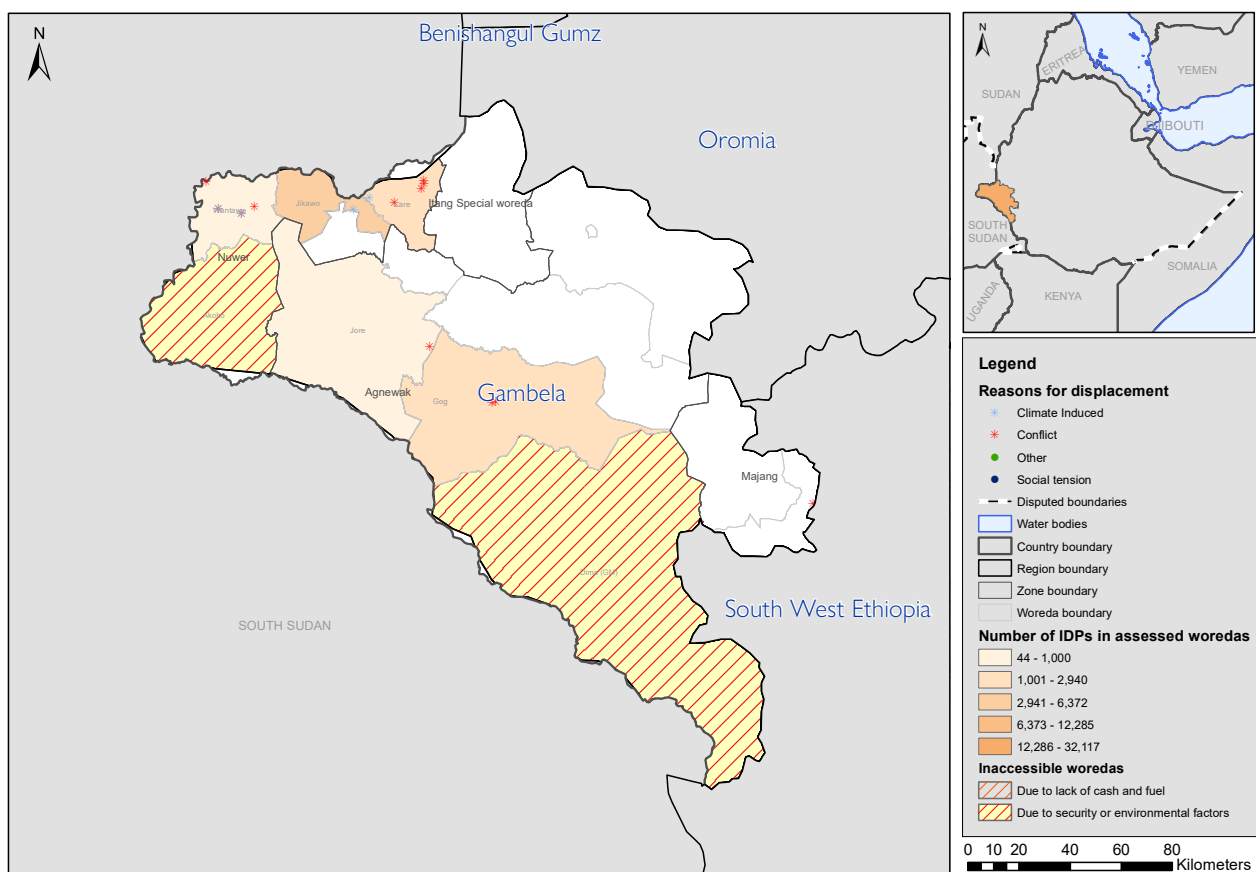


Figure 8: Displacement figures for Gambela region in round 29.

Harari



Sex and age breakdown of IDPs



620 households comprising 2,898 IDPs were identified in 8 sites in Harari region. These figures represent a decrease of 226 IDP (-7.23%) since round 28 (December 2021 — February 2022). Conflict was the main reason for displacement for an estimated 2,898 IDPs, or 100% of the displaced population.

Displacement Caseload and Causes of Displacement in Harari

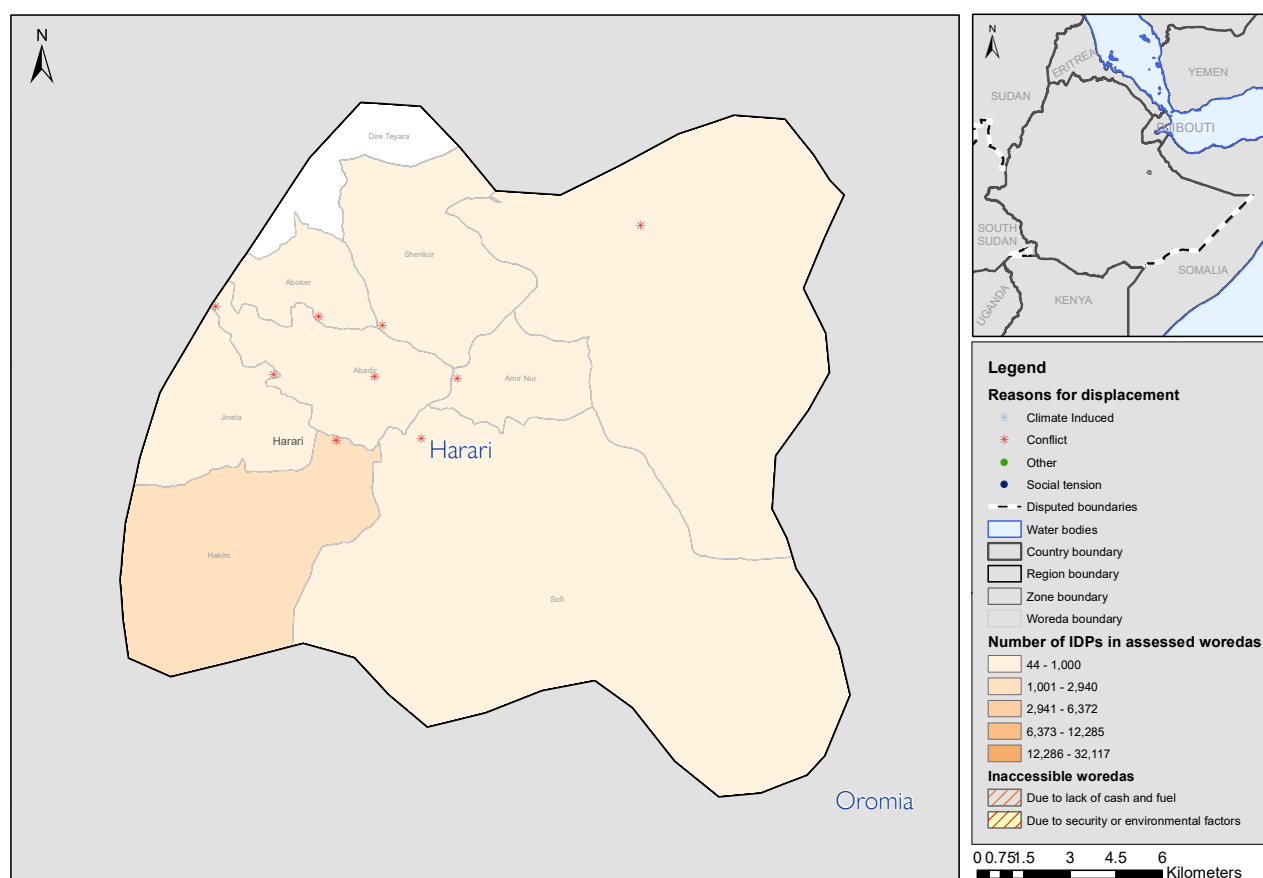


Figure 9: Displacement figures for Harari region in round 29.

Oromia



Sex and age breakdown of IDPs



144,712 households comprising 754,203 IDPs were identified in 615 sites in Oromia region. Despite the higher number of new arrivals in East, West and Kellam Wellegas, there was an overall decrease of 38,483 IDPs (-4.85%) since round 28 (December 2021 — February 2022). Due to conflict and insecurity in West Wellega, East Wellega, West Shewa, Guji and West Guji zones which hampered access in the region, the regional displacement total should be higher. The number of IDPs in the region reporting drought as the primary reason for displacement was 162,610, double the number reporting drought in the previous round; this was particularly seen in West Guji, East Bale and Guji zones. Though drought was not cited as a primary reason for displacement by IDPs in East Bale or Guji zones last round, this round +41,003 IDPs reported drought as the primary reason for displacement in East Bale zone and +39,749 IDPs in Guji zone. Conflict remained the primary reason for displacement for an estimated 420,493 IDPs (55.8%). 166,026 IDPs (22.0%) were displaced due to other reasons*, 162,610 IDPs (21.6%) were displaced due to drought, 2,998 IDPs (0.4%) due to flash floods, 1,015 IDPs (0.1%) due to landslides, 924 IDPs (0.1%) due to seasonal floods and 137 IDPs (<0.1%) due to fires.

Displacement Caseload and Causes of Displacement in Oromia

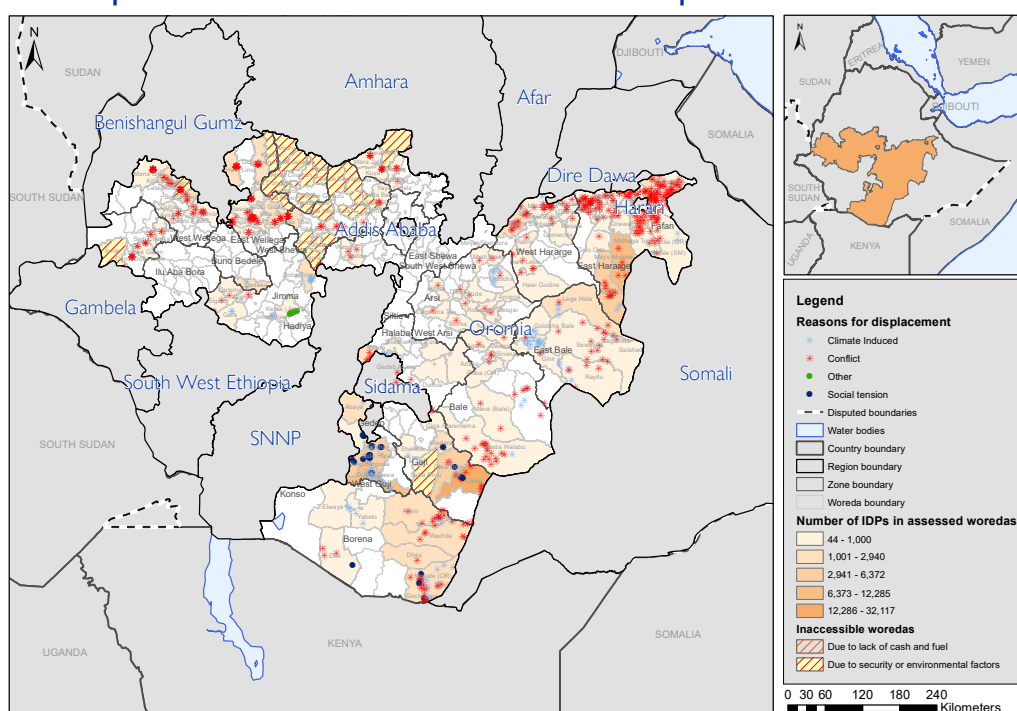


Figure 10: Displacement figures for Oromia region in round 29.

*Other reasons included displacement due to social tension, swampy land, hydropower projects and wind.

Sidama



Sex and age breakdown of IDPs



7,391 households comprising 45,430 IDPs were identified in 53 sites in Sidama. These figures represent an increase of 4,793 IDPs (+11.79%) since round 28 (December 2021 — February 2022). This increase in IDP figures is mainly due to the full coverage of all accessible IDP sites in the region this round, though it should be noted that IDP sites in Wondo-Genet woreda were inaccessible due to insecurity. There was also the re-displacement of returning IDPs in one woreda. Conflict was the primary reason for displacement for an 44,197 IDPs (97.3%), followed by flash floods which displaced 1,233 IDPs (2.7%).

Displacement Caseload and Causes of Displacement in Sidama

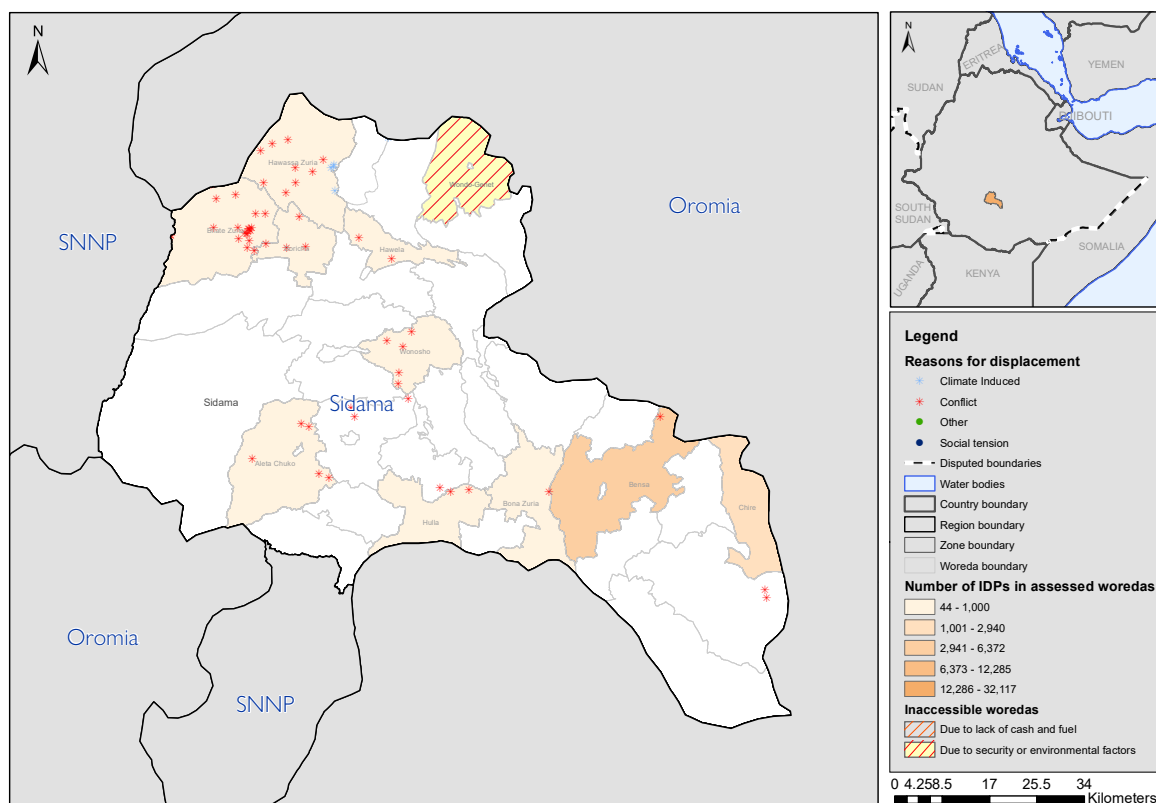
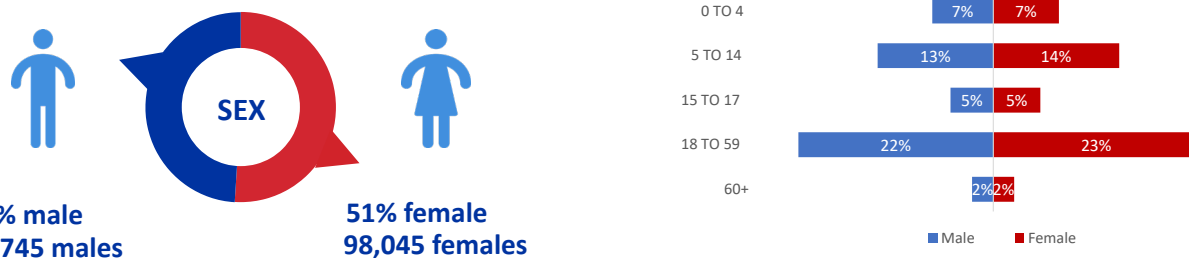


Figure 11: Displacement figures for Sidama region in round 29.

SNNP



Sex and age breakdown of IDPs



36,565 households comprising 190,790 IDPs were identified in 249 sites in SNNP region. These figures represent a decrease of 7,703 IDPs (-3.88%) since round 28 (December 2021 — February 2022). This decrease is primarily due to the decrease in IDPs in Gurage zone as IDPs have begun to return, as well as road inaccessibility which hampered access this round particularly in 17 sites in Gofa zone. Conflict was the primary reason for displacement for 96,998 IDPs (50.8%), followed by flash floods which displaced 41,083 IDPs (21.5%), seasonal floods which displaced 30,477 IDPs (16.0%) and landslides which displaced 22,232 IDPs (11.7%).

Displacement Caseload and Causes of Displacement in SNNP

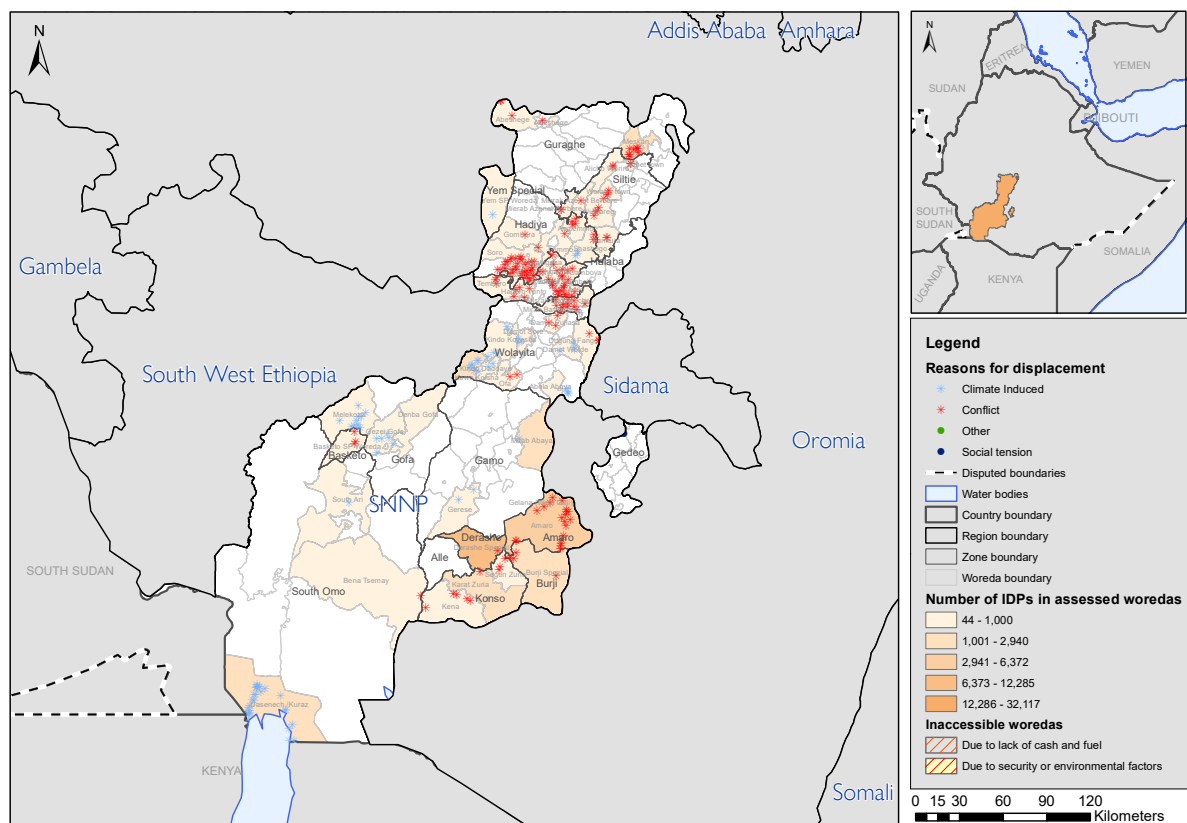
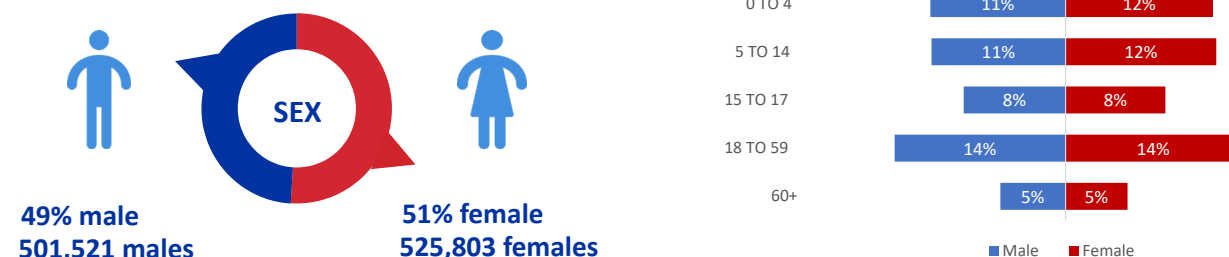


Figure 12: Displacement figures for SNNP region in round 29.

Somali



Sex and age breakdown of IDPs



171,273 households comprising 1,027,324 IDPs were identified in 509 sites in Somali region. These figures represent an increase of 94,756 IDPs (+10.16%) since round 28 (December 2021 — February 2022), though insecurity and road accessibility affected data collection this round in Dawa, Siti and Liban zones. This increase was largely due to the increase in IDPs seen primarily in Shabelle, Liban and Nogob zones mainly due to drought. In Shabelle zone there was an increase of +53,851 IDPs displaced due to drought since the last round, in Liben zone it was +14,364 IDPs and in Nogob zone +13,795 IDPs. Overall in Site Assessment (SA) round 28, 325,505 IDPs cited drought as the primary reason for displacement, which increased to 413,004 IDPs in SA round 29. Despite this, conflict was the main reason for displacement and displaced an estimated 527,026 IDPs (51.3%), while drought displaced 413,004 IDPs (40.2%), seasonal floods displaced 53,004 IDPs (5.2%) and flash floods displaced 34,290 IDPs (3.3%). Of the 1,027,324 IDPs tracked this round, 62% or 639,960 IDPs were displaced within the last 5 years while 38% or 387,364 IDPs have been displaced for 5 years or more.

Displacement Caseload and Causes of Displacement in Somali

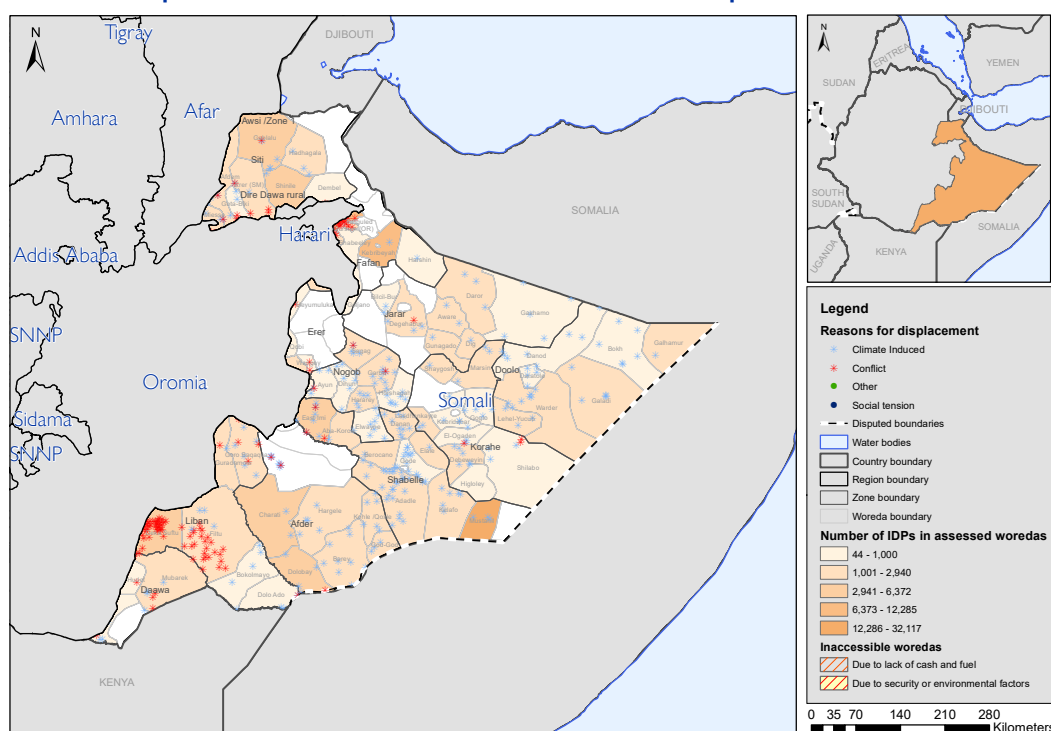


Figure 13: Displacement figures for Somali region in round 29.

South West Ethiopia Peoples



Sex and age breakdown of IDPs



3,127 households comprising 16,596 IDPs were identified in 25 sites in South West Ethiopia Peoples region. There was a decrease of 1,669 IDPs (-9.14%) since the previous round 28 (December 2021 — February 2022), and road accessibility hampered access to 17 sites in Bench Sheko zone in the region. Conflict was the primary cause of displacement for an estimated 15,986 IDPs, or 96.3% of the displaced population. This was followed by landslides which displaced 610 IDPs (3.7%).

Displacement Caseload and Causes of Displacement in South West Ethiopia Peoples

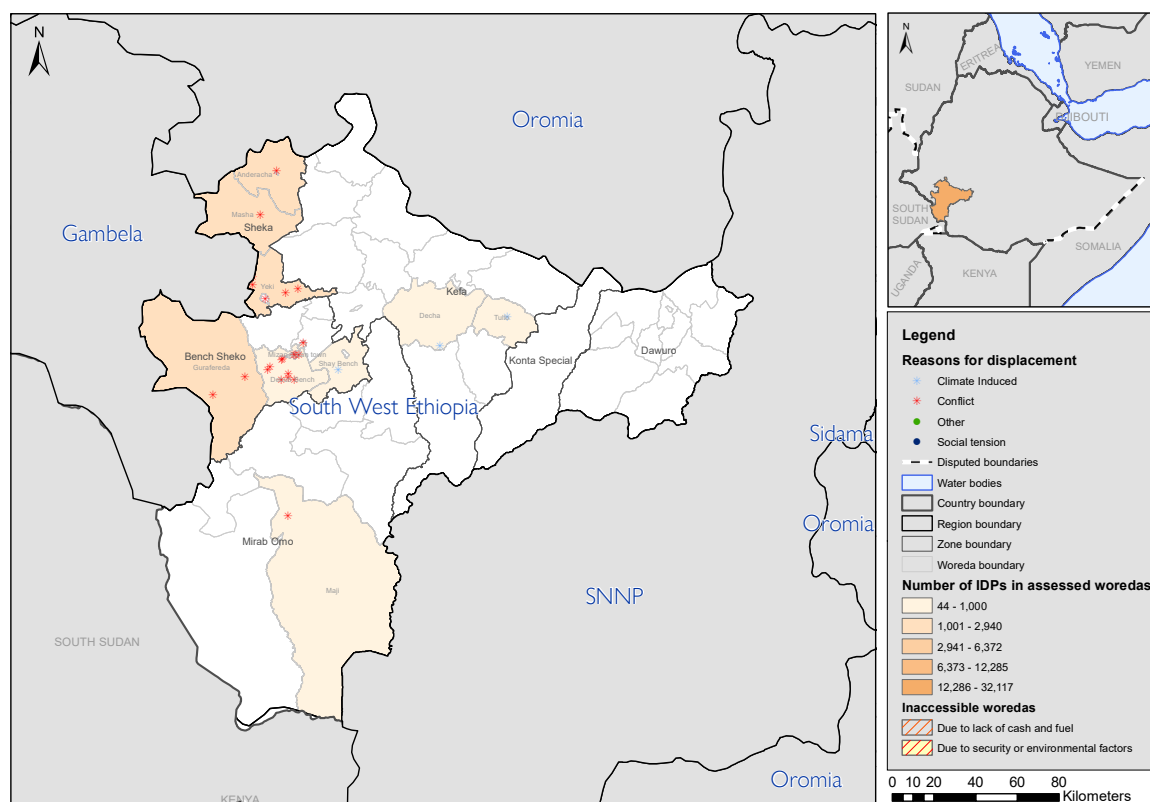


Figure 14: Displacement figures for South West Ethiopia Peoples region in round 29.

*The administrative breakdown of zones and woredas in Southwest Ethiopia Peoples region is a temporary arrangement as agreed with Southwest Ethiopia Peoples Regional Disaster Risk Management Commission until all administrative areas and boundaries have been finalized by the regional government.

Section 2

Village Assessment Survey (VAS)

tracking returns

KEY FINDINGS — VILLAGE ASSESSMENT SURVEY



1,403 villages covered



135 inaccessible villages

Population Breakdown & Initial Causes of Displacement



1,661,346 returning IDPs*
(399,750 households)



684,858 host community
members (163,446 households)



11,657 returned migrants



-41.7% decrease in returning IDPs
(There were 2,848,463 returning IDPs in VAS round 11*)



47.9% male
796,404 males

52.1% female
864,942 females

Top 3 Reasons for Primary Displacement



1,617,885 returning IDPs (97.4%) were initially displaced by conflict in 1,341 villages



22,107 returning IDPs (1.3%) were initially displaced by seasonal floods in 26 villages



17,178 returning IDPs (1%) were initially displaced by flash floods in 26 villages

National Return Caseload Overview

REGION	VILLAGE ASSESSMENT SURVEY (NUMBER OF RETURNING IDPS)
AFAR	75,516
AMHARA	1,405,957
BENISHANGUL GUMZ	4,352
DIRE DAWA	-
GAMBELA	21,435
HARARI	-
OROMIA	8,136
SIDAMA	9,607
SNNP	105,085
SOMALI	1,278
SOUTH WEST ETHIOPIA PEOPLES	29,980
GRAND TOTAL	1,661,346

Other reasons for initial displacement were landslides (3,439 returning IDPs) and fire (737 returning IDPs).

* The Village Assessment Survey (VAS) methodology was revised this round to target villages that host 20 returning IDP households or more that had returned on or after 1 January 2021. The VAS was not carried out in Tigray region this round due to a persisting lack of cash and fuel in the region.

METHODOLOGY



Data collection period:
10 January — 9 April 2022

The Village Assessment Survey (VAS) was used for the first time in IOM Ethiopia in July 2019 in response to the government-led return movement in an effort to capture return trends and sectoral needs in areas reporting high return concentrations. This is the 12th round of VAS data collection.

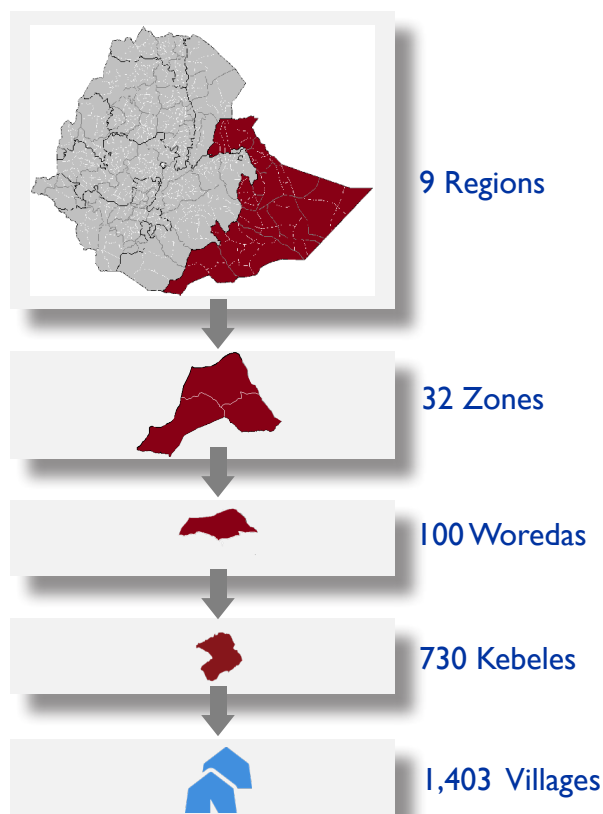
VAS targets villages with reported returns equal to or greater than 20 returning IDP households that returned from 1 January 2021, and collects demographic data on returning IDPs, returned migrants and host community members. The purpose of VAS is to assess the capacity of villages to absorb returns through the availability of services with a focus on livelihoods and reintegration.

DTM works closely with national, zonal and woreda level officials who serve as key informants in identifying villages with high returns. At the village level, DTM collects its data through focus group discussions, key informants and through direct observation. Focus

groups are made up of 7 individuals whereby each focus group must comprise 2 individuals over the age of 65 years of age, 1 individual under 18 years of age, 2 females and at least 1 government official (i.e. kebele administrator, village leader etc.). In villages where they are present, all 3 population categories, namely returning IDPs, returned migrants and host community members must also be represented in the focus group. This lower limit of 7 individuals is employed to ensure that COVID-19 prevention measures, such as social distancing, can be observed. DTM teams ensure that they are equipped with personal protective equipment (PPE) during data collection.

All VAS data is collected in close collaboration with the Ethiopia Disaster Risk Management Commission (EDRMC). All data is electronically collected through survey forms designed in Kobo. The data collection period for this round of VAS was 10 January to 9 April 2022.

Coverage of this round



135 Inaccessible Villages

For round 12 of VAS, a total of 135 villages could not be accessed. 35 villages were inaccessible due to insecurity issues mainly in Bench Sheko, Konso, East Wallaga, Zone 1, and Agnuak zones. 99 villages could not be accessed due to road inaccessibility issues mainly in Bench Sheko, Agnuak, Itang Special Woreda and South Wollo zones, while the remaining 1 village in South Wollo zone was inaccessible due to operational interference during the time of data collection.

OVERVIEW OF RETURNS

National Level

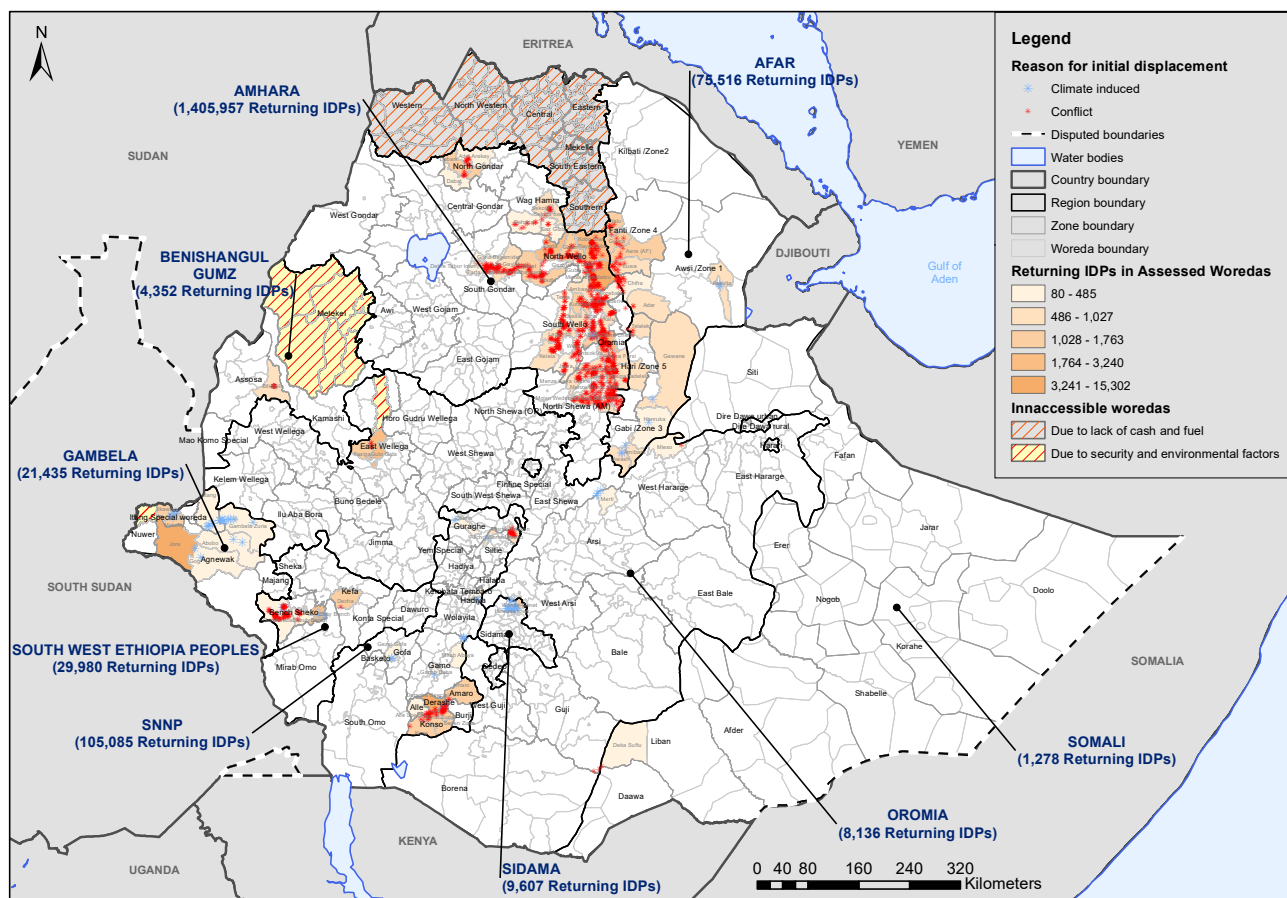


Figure 15: The return caseload based on data collected from the Village Assessment Survey January to April 2022.

According to the data collected primarily between March and April 2022*, there were an estimated 1.66 million returning IDPs (399,750 households) across 1,403 villages in Ethiopia. The decrease in the number of villages covered is primarily due to the adjustment of the Village Assessment Survey methodology to only track villages with 20 or more returning IDP households that returned from 1 January 2021 onwards.

The largest returning IDP caseload is in Amhara region with an estimated total of 1,405,957 returning IDPs (355,923 households), as captured through the coverage of 1,104 villages. Amhara witnessed a decrease of 88,925 returning IDPs (-5.9%). 8 villages could not be accessed due to road inaccessibility and operational interference in North Shewa and South Wollo zones. Conflict was the cause of initial displacement for a majority of returning IDPs in 1,103 villages (99.9%).

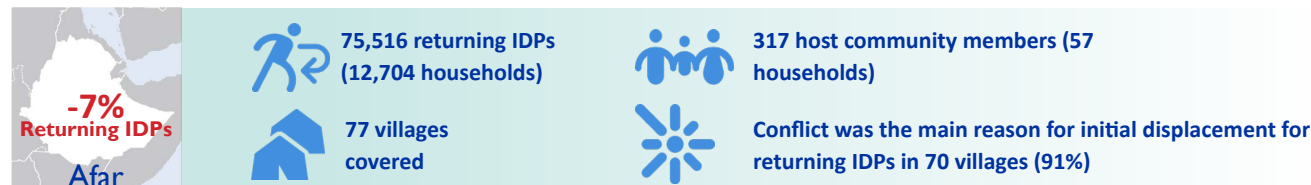
The region hosting the second largest number of returning IDPs is SNNP region with an estimate of 105,085 returning IDPs (16,720 households) in 82 villages. 6 villages could not be covered due to road inaccessibility and security issues in Konso and South Omo zones. Conflict was the main reason for initial displacement for returning IDPs in 72 villages (87.8%).

The region hosting the third largest number of returning IDPs is Afar region with an estimated 75,516 returning IDPs (12,704 households). There was a decrease of 5,764 returning IDPs (-7.1%) since the previous round. Conflict was the main reason for initial displacement for returning IDPs in 70 villages (90.9%).

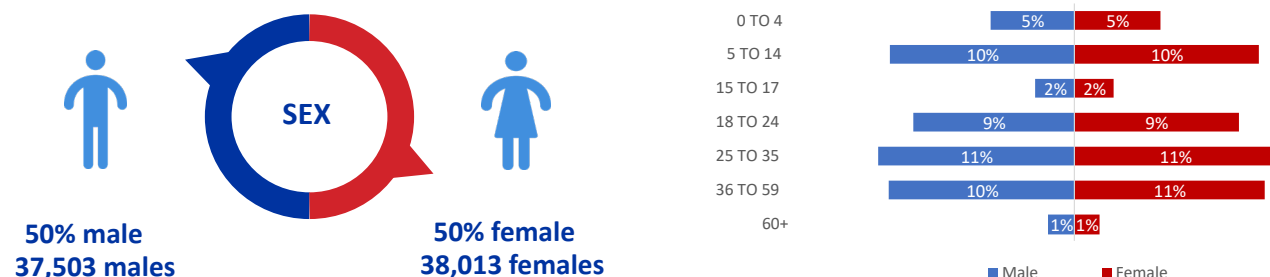
The gender breakdown for returning IDPs is 796,404 males (47.9%) and 864,942 females (52.1%). 1.61 million returning IDPs (97.4%) were initially displaced by conflict.

*Due to operational constraints, some villages in Amhara region were covered in January and February 2022 and are marked as such in the dataset.

Afar



Sex and age breakdown of returning IDPs*



12,704 households comprising 75,516 returning IDPs were identified in 77 villages in Afar region. These figures represent a decrease of 5,764 returning IDPs (-7%) since the previous round 11 (December 2021 - February 2022). The decrease in returns is mainly due to the re-displacement of some returning IDPs due to lack of access to water and fear of potential conflict. Meanwhile, increases in the number of returning IDPs continue to be seen in Zone 4 (Fenti) and Zone 1 (Awsi), as well as Zone 5 (Hari) following the reduction in conflict; the highest concentration of returns continue to be seen in Zone 4 (Fenti). The majority of returning IDPs in 41 villages (53%) arrived between 1 and 3 months ago, followed by 4-6 months in 26 villages (34%). Conflict was the main reason for initial displacement for returning IDPs in 70 villages (91%) followed by flash floods in 7 villages (9%).

Returnee Caseload and Causes of Initial Displacement in Afar

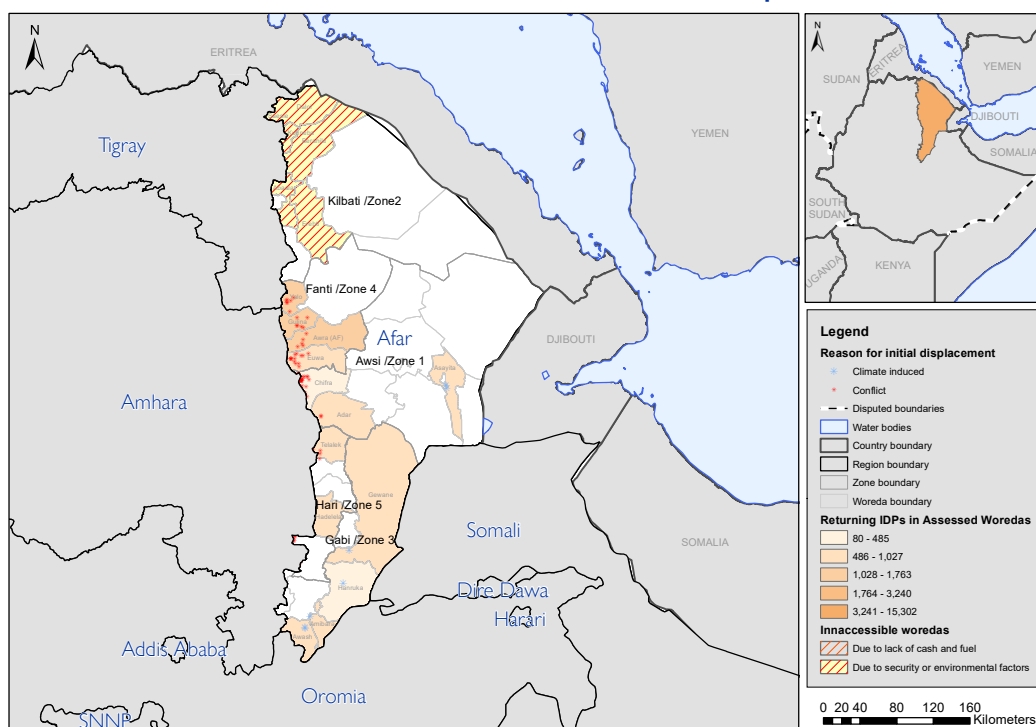


Figure 16: Returning IDP figures for Afar in VAS round 12.

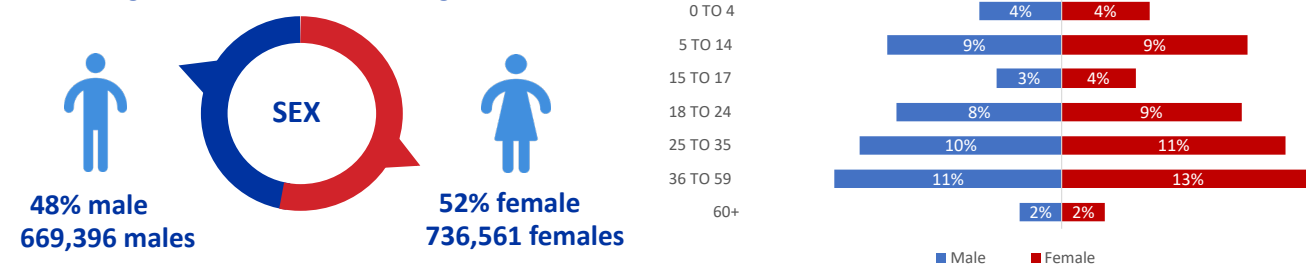
*Please note that the sex and age disaggregation for returning IDPs is an estimate based on the percentage of male and female returning IDPs and based on the percentage of returning IDPs at each age bracket. This is calculated at village level.

** This is the fifth round of Village Assessment Survey carried out in Afar region.

Amhara



Sex and age breakdown of returning IDPs*



355,923 households comprising 1,405,957 returning IDPs were identified in 1,104 villages in Amhara region. These figures represent a decrease of 88,925 returning IDPs (-5.95%) since the previous round 11 (December 2021 - February 2022). The decrease is mainly due to the adjustment to the Village Assessment Survey methodology. Most of Wag Hamra zone remained inaccessible this round due to ongoing conflict. Conflict was the cause of initial displacement for a majority of returning IDPs in 1,103 villages (99.9%) followed by flash floods in 1 village (<1%).

Returnee Caseload and Causes of Initial Displacement in Amhara

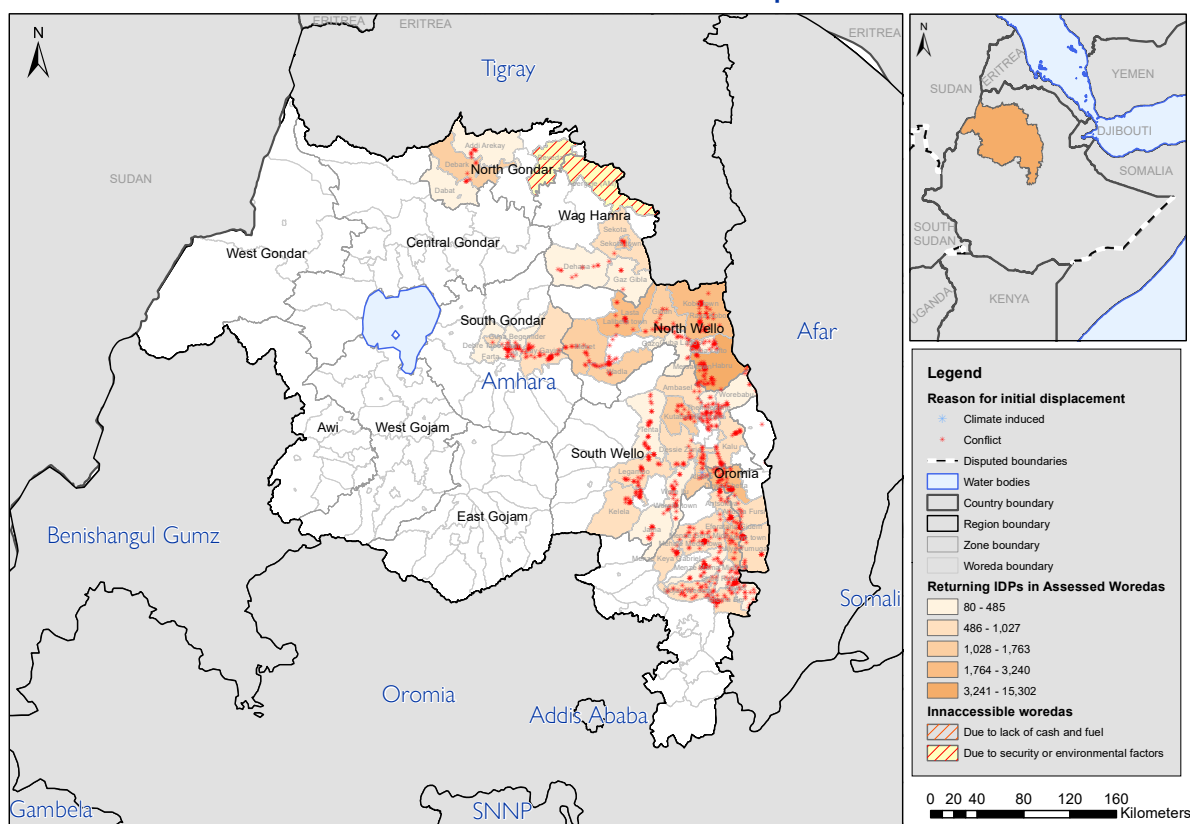


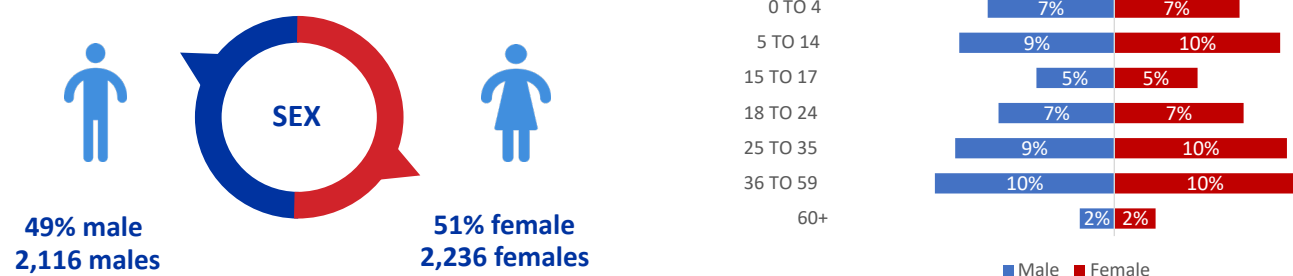
Figure 17: Returning IDP figures for Amhara in VAS round 12.

*Please note that the sex and age disaggregation for returning IDPs is an estimate based on the percentage of male and female returning IDPs and based on the percentage of returning IDPs at each age bracket. This is calculated at village level.

Benishangul Gumz



Sex and age breakdown of returning IDPs*



721 households comprising 4,352 returning IDPs were identified in 8 villages in Benishangul Gumz region. These figures represent a decrease of 22,752 returning IDPs since round 28 (December 2021 — February 2022). However, this decrease is mainly due to a revision of the Village Assessment Survey methodology which now focuses on tracking returns that happened from 1 January 2021 onwards. Villages of return in Kemashi and Metekel zones could not be covered due to insecurity. Therefore, it should be noted that the return figures for Benishangul Gumz region should be higher. Conflict was the main reason for initial displacement for returning IDPs in all 43 villages (100%).

Returnee Caseload and Causes of Initial Displacement in Benishangul Gumz

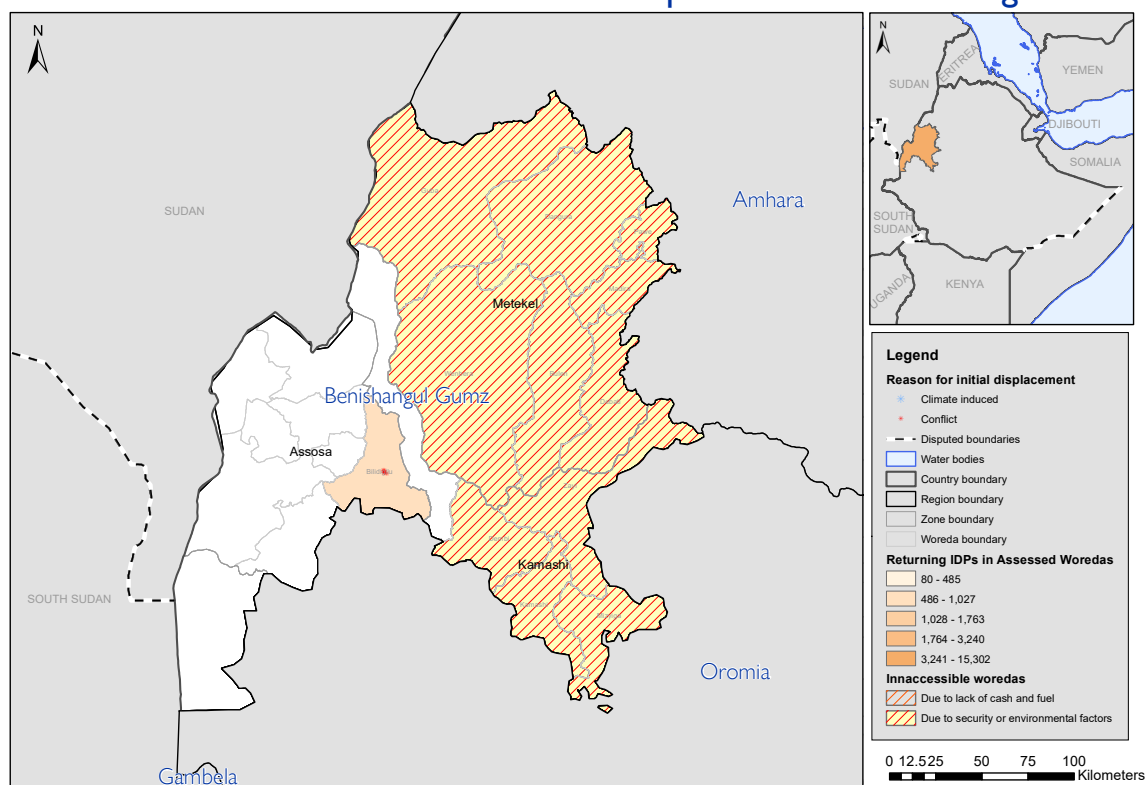


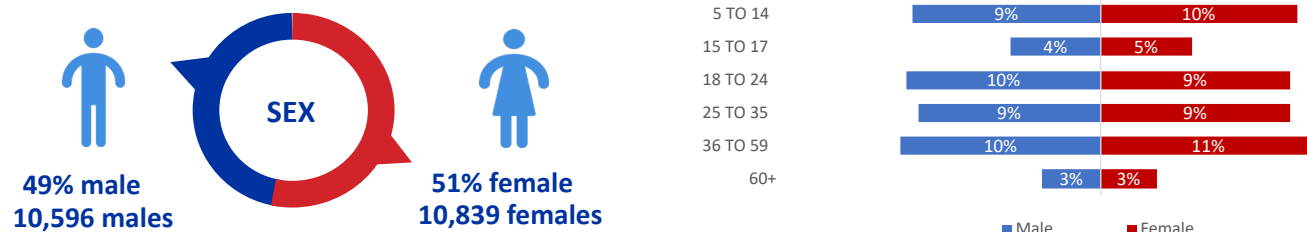
Figure 18: Returning IDP figures for Benishangul Gumz in VAS round 12.

*Please note that the sex and age disaggregation for returning IDPs is an estimate based on the percentage of male and female returning IDPs and based on the percentage of returning IDPs at each age bracket. This is calculated at village level.

Gambela



Sex and age breakdown of returning IDPs*



4,160 households comprising 21,435 returning IDPs were identified in 23 villages in Gambela. This is an increase of 4,960 returning IDPs (+30%) since the previous round 11 (December 2021 — February 2022). The notable increase is due to the return of IDPs to 7 new villages in Itang Special Woreda. However, road inaccessibility restricted access to 39 villages in the region, particularly in Itang Special Woreda, Nuwer and Agnuak zones. A majority of returning IDPs in 13 villages (57%) arrived between 4 and 6 months ago followed by a majority of returning IDPs in 8 villages (35%) who arrived more than 6 months ago and the majority of returning IDPs in 2 villages (9%) who arrived between 1 and 3 months ago. Seasonal floods were the cause of initial displacement for a majority of returning IDPs in all 23 villages (100%).

Returnee Caseload and Causes of Initial Displacement in Gambela

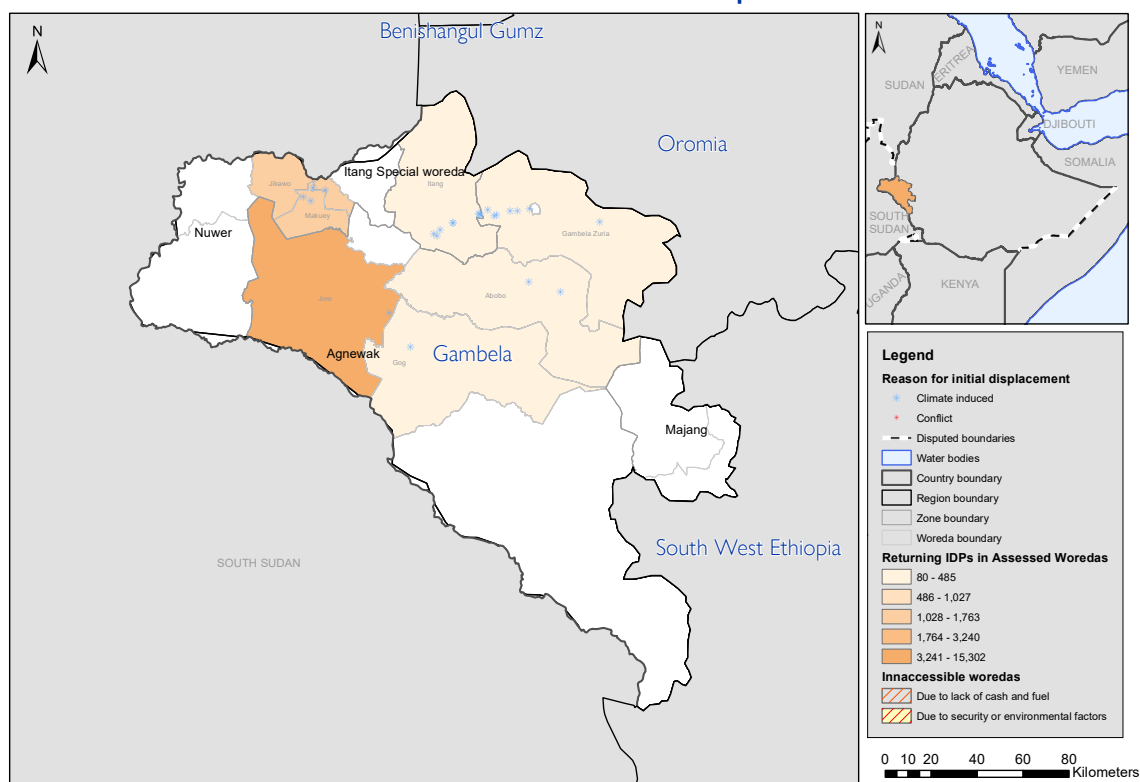
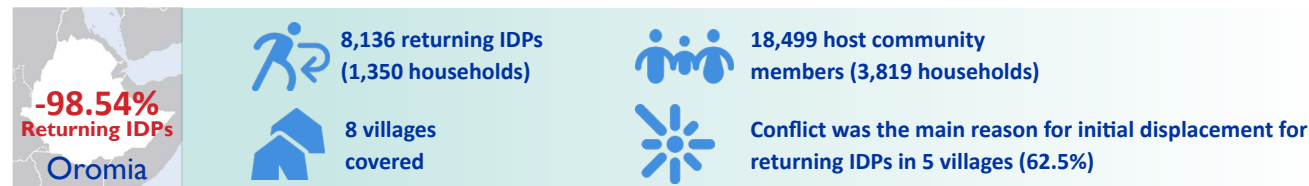


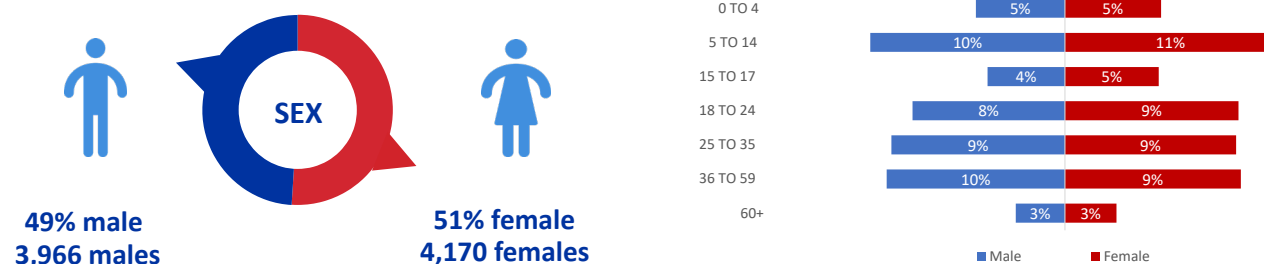
Figure 19: Returning IDP figures for Gambela in VAS round 12.

*Please note that the sex and age disaggregation for returning IDPs is an estimate based on the percentage of male and female returning IDPs and based on the percentage of returning IDPs at each age bracket. This is calculated at village level.

Oromia



Sex and age breakdown of returning IDPs*



1,350 households comprising 8,136 returning IDPs were identified in 8 villages in Oromia region. There was a decrease of 550,768 returning IDPs (-98.54%) since round 11 (December 2021 — February 2022). The decrease was partly due to insecurity particularly in West Guji, Guji and East Wallaga zones, as well as the revision of the VAS methodology, which meant that many returning IDPs that had returned due to the Gedeo-West Guji Crisis in 2018 were no longer being tracked. Conflict was the cause of initial displacement for a majority of returning IDPs in 5 villages (62.5%) followed by flash floods in 3 villages (37.5%).

Returnee Caseload and Causes of Initial Displacement in Oromia

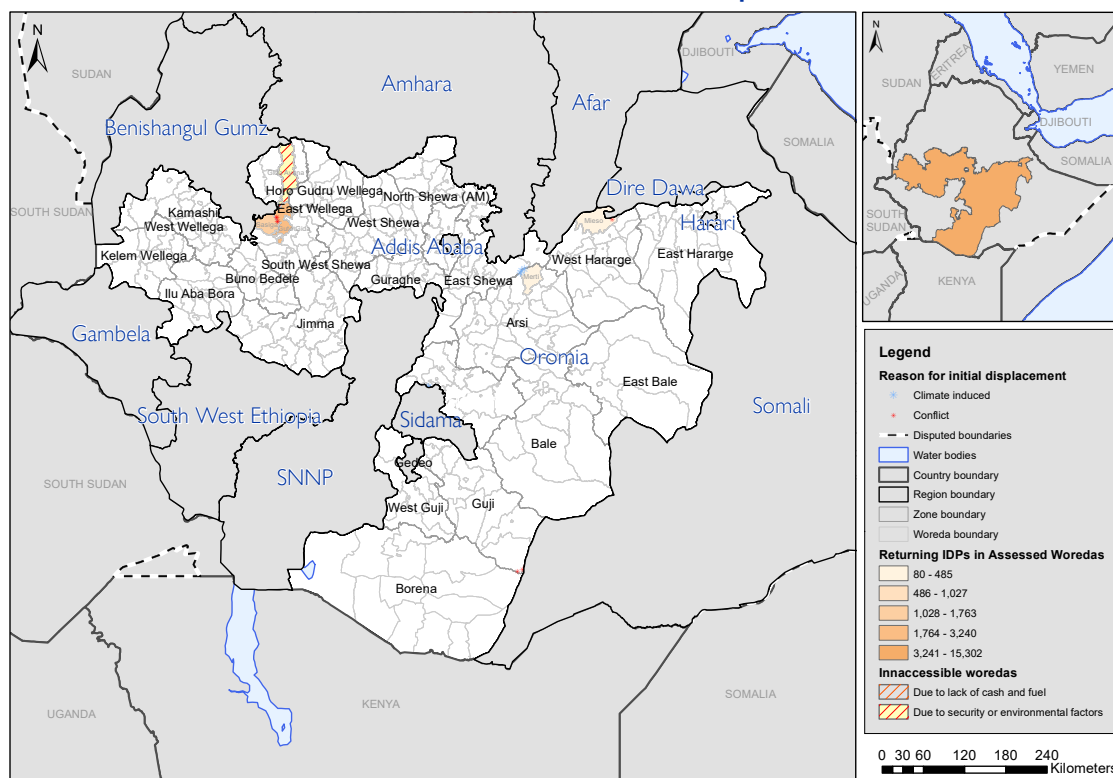
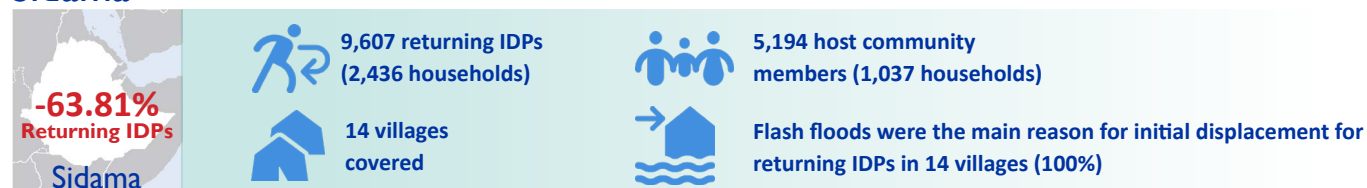


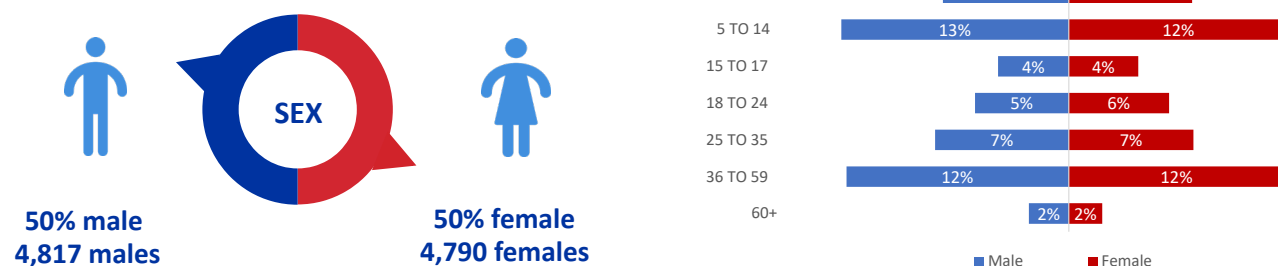
Figure 20: Returning IDP figures for Oromia region in VAS round 12.

*Please note that the sex and age disaggregation for returning IDPs is an estimate based on the percentage of male and female returning IDPs and based on the percentage of returning IDPs at each age bracket. This is calculated at village level.

Sidama



Sex and age breakdown of returning IDPs*



2,436 households comprising 9,607 returning IDPs were identified in 14 villages in Sidama region. This represents a decrease of 16,941 returning IDPs (-63.81%) since the previous round 11 (December 2021 — February 2022). This decrease is primarily due to the revision of the VAS methodology, as well as the re-displacement of returning IDPs in one woreda in the region. Flash floods were the initial reason for displacement for returning IDPs in all 14 villages (100%).

Returnee Caseload and Causes of Initial Displacement in Sidama

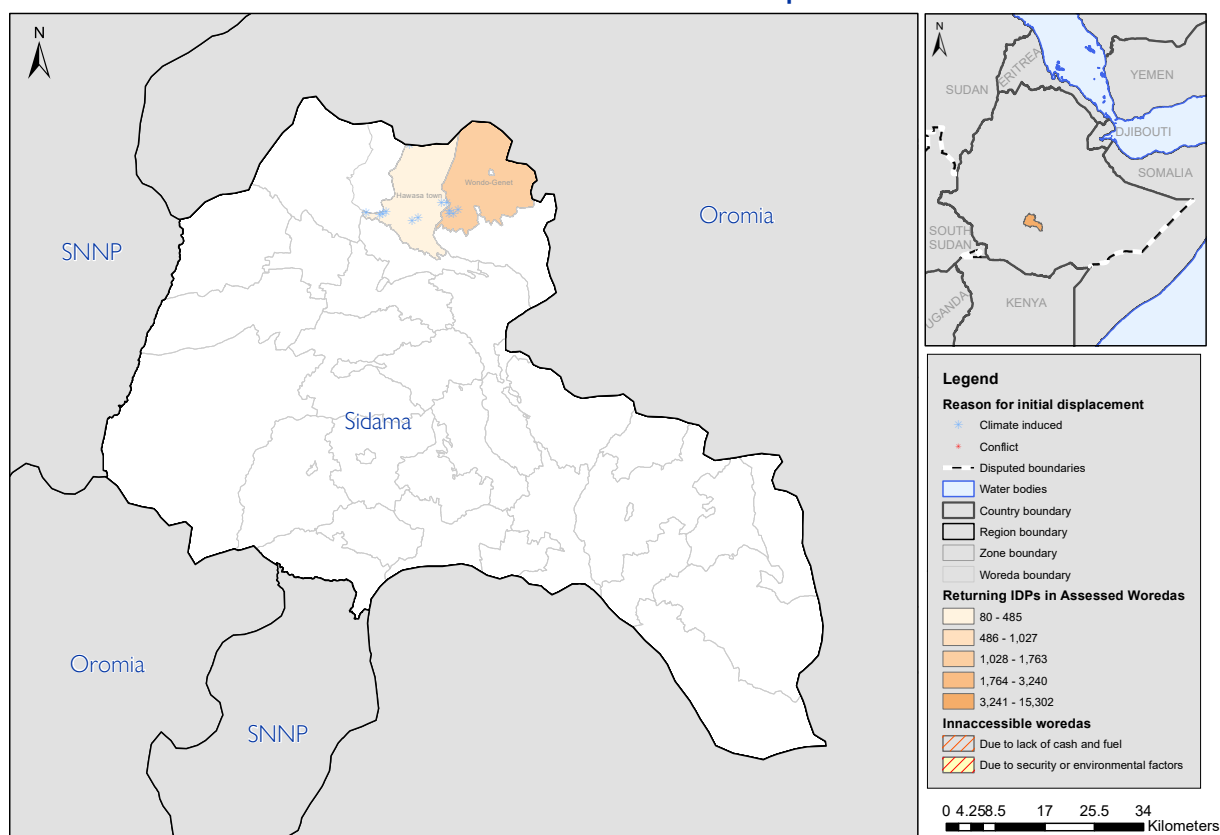


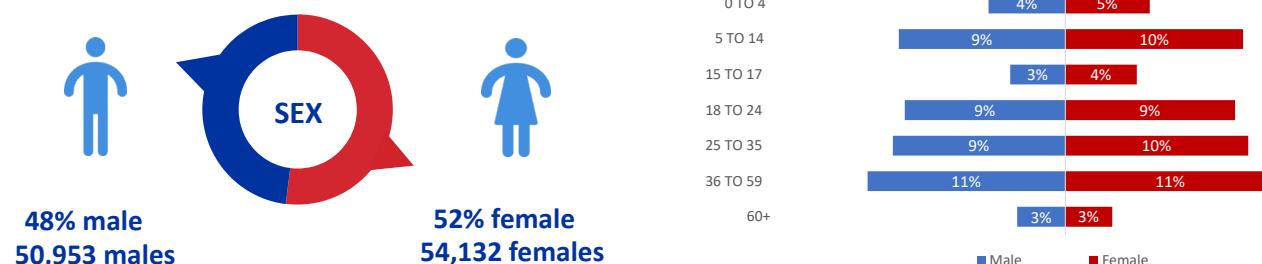
Figure 21: Returning IDP figures for Sidama region in VAS round 12.

*Please note that the sex and age disaggregation for returning IDPs is an estimate based on the percentage of male and female returning IDPs and based on the percentage of returning IDPs at each age bracket. This is calculated at village level.

SNNP



Sex and age breakdown of returning IDPs*



16,720 households comprising 105,085 returning IDPs were identified in 82 villages in SNNP region. There was a decrease of 112,956 returning IDPs (-51.8%) since round 11 (December 2021 — February 2022). The significant decrease is primarily due to the exclusion of villages mostly in Gurage and South Omo zones following a revision of the Village Assessment Survey methodology to only track returns that happened from 1 January 2021 onwards. There were also 5 villages in Konso zone that were inaccessible due to insecurity this round. Conflict was the primary reason for initial displacement for returning IDPs in 72 villages (87.8%), followed by landslides in 6 villages (7.3%), fire in 2 villages (2.5%), flash floods in 1 village (1.2%) and seasonal floods in 1 village (1.2%).

Returnee Caseload and Causes of Initial Displacement in SNNP

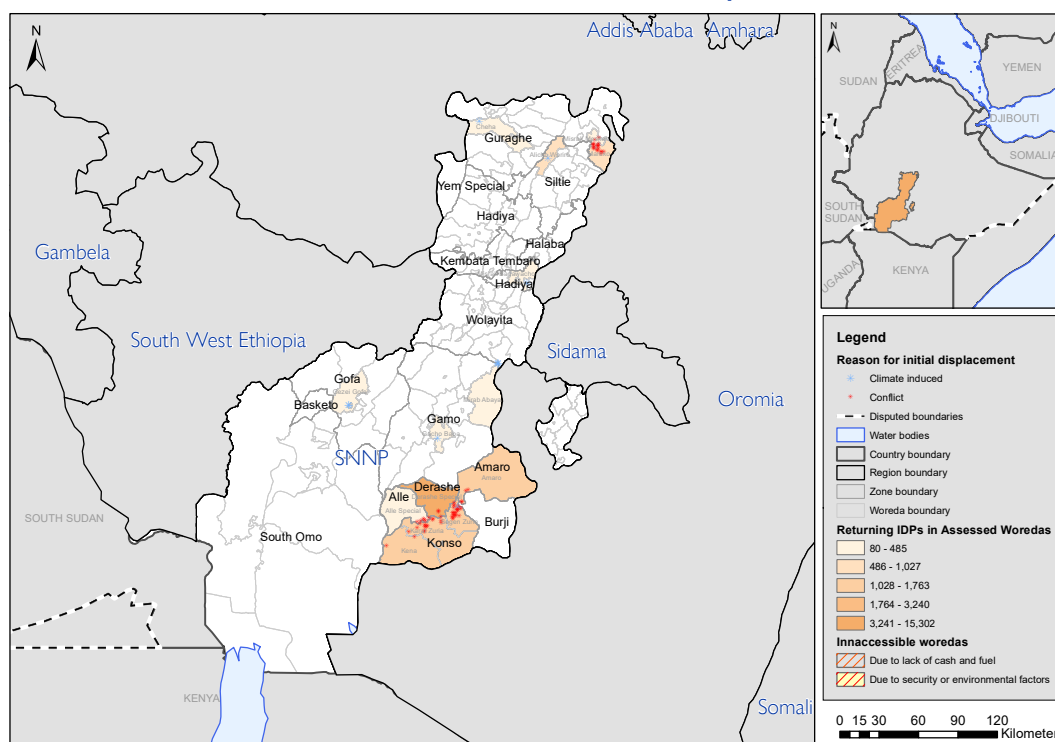


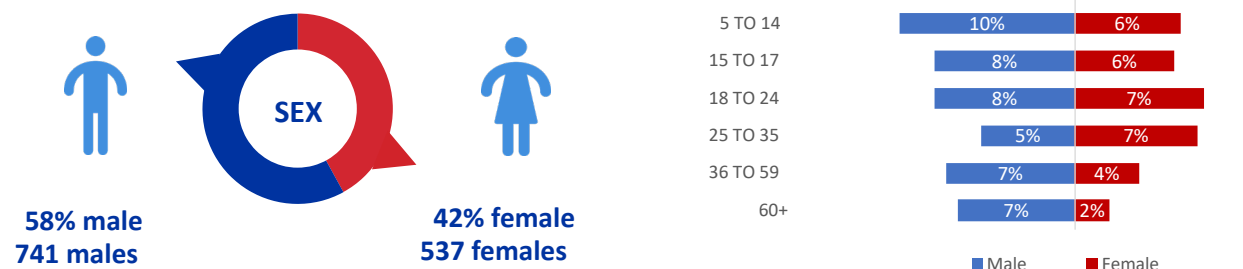
Figure 22: Returning IDP figures for SNNP region in VAS round 12.

*Please note that the sex and age disaggregation for returning IDPs is an estimate based on the percentage of male and female returning IDPs and based on the percentage of returning IDPs at each age bracket. This is calculated at village level.

Somali



Sex and age breakdown of returning IDPs*



213 households comprising 1,278 returning IDPs were identified in 3 villages in Somali region. There was a decrease of 387,075 returning IDPs (-99.67%) since the previous round 11 (December 2021 — February 2022). Conflict was the main reason for initial displacement for returning IDPs in all 3 villages (100%). The significant decrease in the number of returning IDPs is primarily due to a revision of the Village Assessment Survey methodology to only track returns that happened from 1 January 2021 onwards. Many of the returning IDPs in Somali region especially in Fafan zone began returning in 2019 after the reconciliation process between Oromia region and Somali region.

Returnee Caseload and Causes of Initial Displacement in Somali

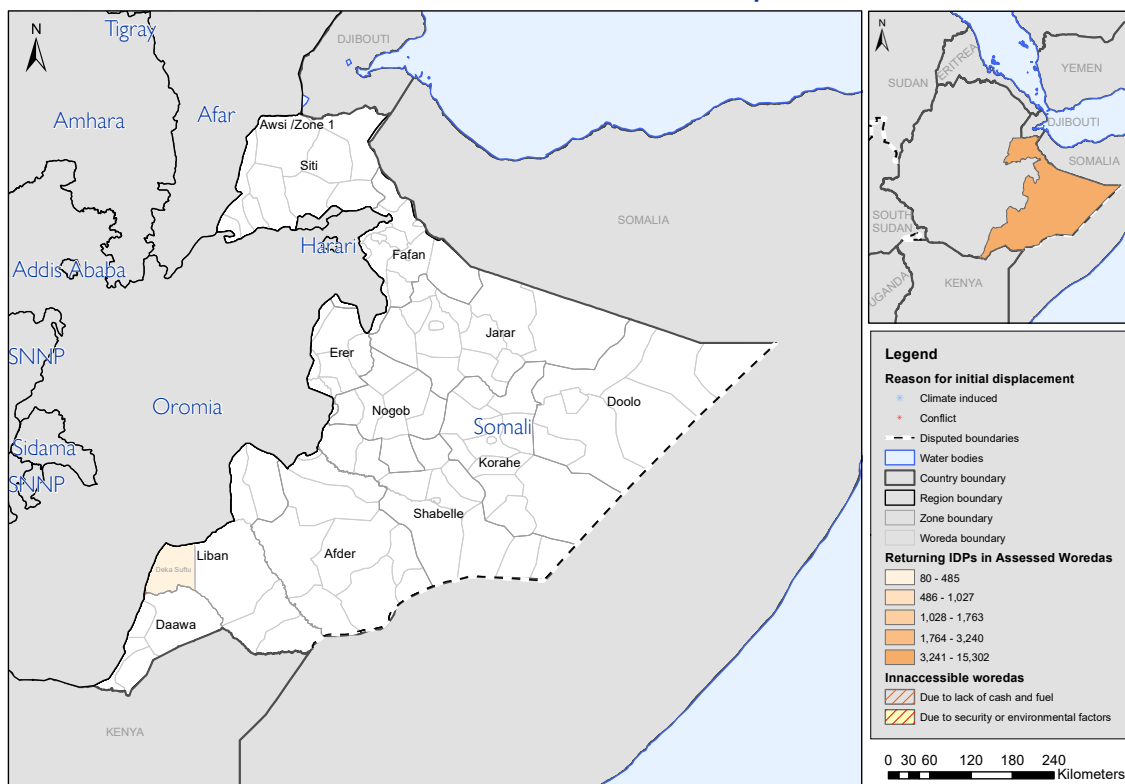
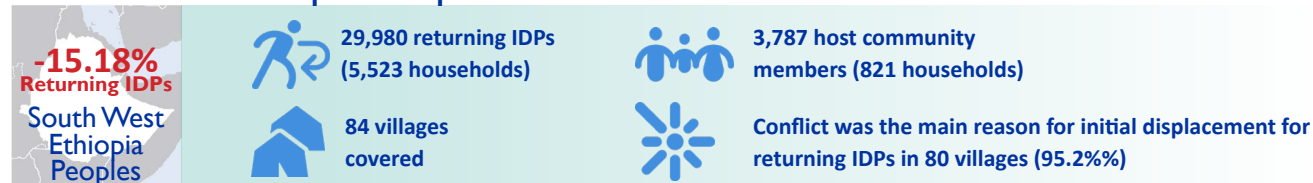


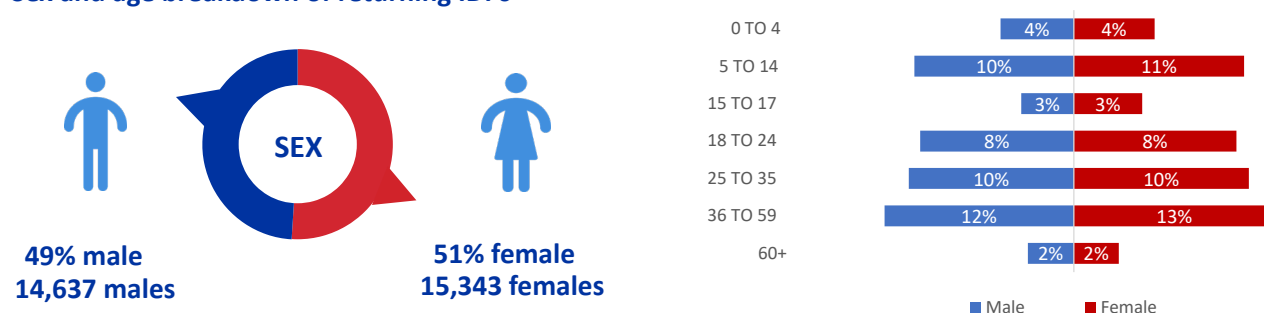
Figure 23: Returning IDP figures for Somali region in VAS round 12.

*Please note that the sex and age disaggregation for returning IDPs is an estimate based on the percentage of male and female returning IDPs and based on the percentage of returning IDPs at each age bracket. This is calculated at village level.

South West Ethiopia Peoples



Sex and age breakdown of returning IDPs*



5,523 households comprising 29,980 IDPs were identified in 84 villages in South West Ethiopia Peoples region. There was a decrease of 5,366 returning IDPs (-15.18%) since the previous round 11 (December 2021 — February 2022). The decrease in the number of returning IDPs is due to a revision of the Village Assessment Survey methodology to only track returns that happened from 1 January 2021 onwards. Additionally 69 villages in Bench Sheko zone in the region were inaccessible due to road conditions and insecurity. Conflict was the main reason for initial displacement for returning IDPs in 80 villages (95.2%) followed by landslides in 2 villages (2.4%) and seasonal floods in 2 villages (2.4%).

Returnee Caseload and Causes of Initial Displacement in South West Ethiopia Peoples

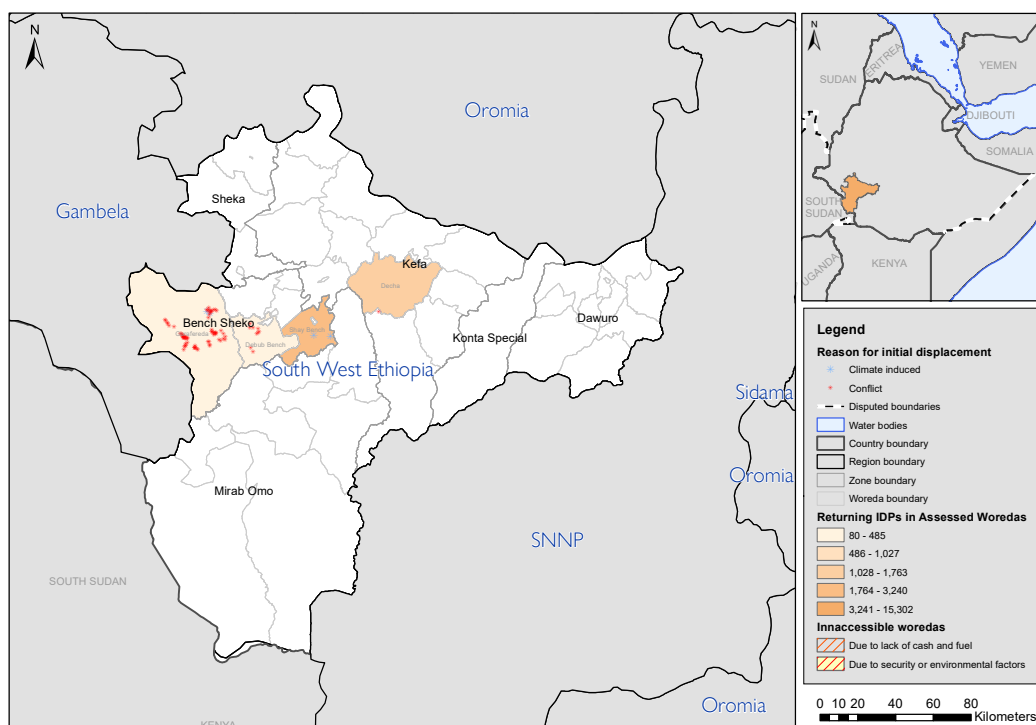


Figure 24: Returning IDP figures for South West Ethiopia Peoples region in VAS round 12.

*Please note that the sex and age disaggregation for returning IDPs is an estimate based on the percentage of male and female returning IDPs and based on the percentage of returning IDPs at each age bracket. This is calculated at village level.

ANNEX A

SUMMARY TABLE OF DISPLACEMENT

Site Assessment

Displacement Tracking Matrix (DTM) Site Assessment Round 29 (1 March - 18 April 2022) - National Summary Table of Displacement

Round	Region	Zone	Woreda	Cause	Before 2021			During 2021			In 2022			Total HH	Total Individuals	Total Sites
					HH	Individuals	Sites	HH	Individuals	Sites	HH	Individuals	Sites			
Afar	Awi (Zone 1)	Ambo	Ambo	Conflict	360	2,160	1	-	-	-	-	-	-	360	2,160	1
Afar	Awi (Zone 1)	Ambo	Ambo	Flash flood	1,341	8,046	5	-	-	-	-	-	-	1,341	8,046	5
Afar	Awi (Zone 1)	Aysala	Aysala	Flash flood	305	1,772	2	211	1,134	3	-	-	-	516	2,856	5
Afar	Awi (Zone 1)	Eldar	Eldar	Seasonal flood	295	1,732	1	-	-	-	-	-	-	295	1,732	1
Afar	Awi (Zone 1)	Mile	Mile	Drought	166	996	2	35	210	1	-	-	-	201	1,206	3
Afar	Awi (Zone 1)	Mile	Mile	Conflict	263	1,578	1	-	-	-	-	-	-	263	1,578	1
Afar	Awi (Zone 1)	Mile	Mile	Flash flood	250	1,500	1	-	-	-	-	-	-	250	1,500	1
Afar	Awi (Zone 1)	Kurri	Kurri	Conflict	-	-	-	-	-	-	5,670	34,020	2	5,670	34,020	2
Afar	Awi (Zone 1)	Kurri	Kurri	Drought	40	245	1	-	-	-	-	-	-	40	245	1
Afar	Awi (Zone 1)	Adaa'r	Adaa'r	Conflict	-	-	-	1,461	8,766	3	400	2,400	1	1,861	11,166	4
Afar	Awi (Zone 1)	Samara Logya City Administration	Samara Logya City Administration	Conflict	-	-	-	-	-	-	2,764	7,863	1	2,764	7,863	1
Afar	Fenti (Zone 4)	Gulla	Gulla	Seasonal flood	70	350	1	-	-	-	-	-	-	70	350	1
Afar	Fenti (Zone 4)	Teru	Teru	Drought	37	185	1	-	-	-	-	-	-	37	185	1
Afar	Fenti (Zone 4)	Eva	Eva	Other	82	443	1	-	-	-	-	-	-	82	443	1
Afar	Fenti (Zone 4)	Yilo	Yilo	Other	198	1,158	1	-	-	-	-	-	-	198	1,158	1
Afar	Gabi (Zone 3)	Ambara	Ambara	Conflict	645	3,870	2	-	-	-	220	1,320	2	865	5,190	4
Afar	Gabi (Zone 3)	Ambara	Ambara	Flash flood	334	2,004	1	-	-	-	-	-	-	334	2,004	1
Afar	Gabi (Zone 3)	Awash Fentale	Awash Fentale	Flash flood	372	2,232	2	290	1,740	2	-	-	-	290	1,740	2
Afar	Gabi (Zone 3)	Dulcha	Dulcha	Flash flood	70	420	1	100	600	1	-	-	-	472	2,832	3
Afar	Gabi (Zone 3)	Gallu	Gallu	Flash flood	810	4,860	2	-	-	-	-	-	-	810	4,860	2
Afar	Gabi (Zone 3)	Gewene	Gewene	Flash flood	225	1,350	1	440	2,640	3	-	-	-	665	3,990	4
Afar	Gabi (Zone 3)	Hannuka	Hannuka	Conflict	-	-	-	-	-	-	260	1,560	2	260	1,560	2
Afar	Gabi (Zone 3)	Hannuka	Hannuka	Drought	659	3,954	1	-	-	-	-	-	-	659	3,954	1
Afar	Gabi (Zone 3)	Hannuka	Hannuka	Flash flood	-	-	-	211	1,266	1	-	-	-	211	1,266	1
Afar	Gabi (Zone 3)	Awash City Administration	Awash City Administration	Conflict	-	-	-	200	1,000	1	-	-	-	200	1,000	1
Afar	Hari (Zone 5)	Dallagi	Dallagi	Conflict	115	619	1	-	-	-	-	-	-	115	619	1
Afar	Hari (Zone 5)	Dewe	Dewe	Drought	-	-	-	1,000	5,000	2	-	-	-	1,000	5,000	2
Afar	Hari (Zone 5)	Hadejela	Hadejela	Conflict	301	1,806	1	-	-	-	-	-	-	301	1,806	1
Afar	Hari (Zone 5)	Simurubi Gede'abo	Simurubi Gede'abo	Drought	54	268	1	-	-	-	-	-	-	54	268	1
Afar	Hari (Zone 5)	Telak	Telak	Other	40	203	1	-	-	-	-	-	-	40	203	1
Afar	Hari (Zone 5)	Yangudi	Yangudi	Conflict	-	-	-	80	400	1	-	-	-	80	400	1
Afar	Kibati (Zone 2)	Adera	Adera	Conflict	149	717	2	-	-	-	2,296	13,776	4	2,296	13,776	4
Afar	Kibati (Zone 2)	Bidu	Bidu	Drought	250	1,450	1	-	-	-	-	-	-	250	1,450	1
Afar	Kibati (Zone 2)	Megale	Megale	Other	-	-	-	-	-	-	-	-	-	1,970	9,850	1
Afar	Kibati (Zone 2)	Megale	Megale	Conflict	-	-	-	-	-	-	1,970	9,850	1	1,970	9,850	1
Afar Total					7,431	43,868	35	4,028	22,756	18	13,580	70,789	13	25,039	137,413	66
Anhara	Awi/Agew	Guagusa Shikudad	Guagusa Shikudad	Conflict	192	674	3	-	-	-	-	-	-	192	674	3
Anhara	Awi/Agew	Dangila	Dangila	Conflict	394	1,587	7	-	-	-	-	-	-	394	1,587	7
Anhara	Awi/Agew	Fagta Lakoma	Fagta Lakoma	Conflict	834	3,572	13	204	929	3	-	-	-	1,038	4,501	16
Anhara	Awi/Agew	Jawi	Jawi	Conflict	2,799	10,085	11	347	1,599	1	-	-	-	3,146	11,684	12
Anhara	Awi/Agew	Zigem	Zigem	Conflict	3,555	17,705	10	137	898	2	-	-	-	3,692	18,603	12
Anhara	Awi/Agew	Ankasha	Ankasha	Conflict	95	281	3	-	-	-	-	-	-	95	281	3
Anhara	Awi/Agew	Ayehu Guagusa	Ayehu Guagusa	Conflict	778	2,826	4	-	-	-	-	-	-	778	2,826	4
Anhara	Awi/Agew	Banja	Banja	Conflict	543	2,447	8	-	-	-	-	-	-	543	2,447	8
Anhara	Awi/Agew	Injibara City Administration	Injibara City Administration	Conflict	142	467	3	-	-	-	-	-	-	142	467	3
Anhara	Awi/Agew	Injibara City Administration	Injibara City Administration	Other	110	393	1	-	-	-	-	-	-	110	393	1
Anhara	Awi/Agew	Dangila City Administration	Dangila City Administration	Conflict	259	1,002	5	-	-	-	-	-	-	259	1,002	5
Anhara	Bahr Dar	Belay Zekia Sub City	Belay Zekia Sub City	Conflict	523	1,494	3	-	-	-	-	-	-	523	1,494	3
Anhara	Bahr Dar	Alse tewodros Sub City	Alse tewodros Sub City	Conflict	945	4,150	5	-	-	-	-	-	-	945	4,150	5
Anhara	Bahr Dar	Digmawi Menlik Sub City	Digmawi Menlik Sub City	Conflict	144	936	2	200	889	2	-	-	-	344	1,825	4
Anhara	Bahr Dar	Tana Sub City	Tana Sub City	Conflict	254	906	3	-	-	-	-	-	-	254	906	3
Anhara	Central Gonder	Gonder Zuria	Gonder Zuria	Conflict	315	1,007	2	-	-	-	25	127	1	340	1,134	3
Anhara	Central Gonder	Aykel City Administration	Aykel City Administration	Conflict	1,000	5,000	2	-	-	-	-	-	-	1,000	5,000	2
Anhara	Central Gonder	East Belesa	East Belesa	Conflict	337	1,767	5	-	-	-	-	-	-	337	1,767	5
Anhara	Central Gonder	Lay Armacheho	Lay Armacheho	Conflict	-	-	-	109	192	1	-	-	-	109	192	1
Anhara	Central Gonder	Chiga 1	Chiga 1	Conflict	249	1,023	1	99	530	2	178	890	1	526	2,443	4
Anhara	Central Gonder	Chiga 2	Chiga 2	Conflict	-	-	-	-	-	-	360	2,500	1	360	2,500	1
Anhara	Central Gonder	Gonder City Administration	Gonder City Administration	Conflict	1,270	1,930	1	2,587	12,933	6	-	-	-	3,857	14,863	7
Anhara	Central Gonder	West Belesa	West Belesa	Conflict	218	797	2	-	-	-	-	-	-	218	797	2
Anhara	Central Gonder	Wogera	Wogera	Conflict	206	796	2	-	-	-	-	-	-	206	796	2

Round	Region	Zone	Woreda	Cause	Before 2021			During 2021			In 2022			Total HH	Total Individuals	Total Sites
					HH	Individuals	Sites	HH	Individuals	Sites	HH	Individuals	Sites			
Site Assessment Round 29 (1 March - 18 April 2022)	Anhara	East Gojam	Baso Liben	Conflict	933	2,959	6	101	428	1	-	-	-	1,034	3,387	7
	Anhara	East Gojam	Gondha Siso Enese	Conflict	514	1,400	5	53	247	1	-	-	-	567	1,647	6
	Anhara	East Gojam	Debre Markos	Conflict	587	2,100	7	-	-	-	41	164	1	628	2,264	8
	Anhara	East Gojam	Enbise Sar Midir	Conflict	118	471	1	86	339	1	-	-	-	204	810	2
	Anhara	East Gojam	Guzamn	Conflict	67	217	2	-	-	-	-	-	-	67	217	2
	Anhara	East Gojam	Guzamn	Landslide	130	562	2	-	-	-	-	-	-	130	562	2
	Anhara	East Gojam	Awabel	Conflict	98	300	2	-	-	-	-	-	-	98	300	2
	Anhara	East Gojam	Merto Lemariyam City Administration	Conflict	234	922	5	-	-	-	-	-	-	234	922	5
	Anhara	East Gojam	Michakel	Conflict	654	2,362	6	35	130	1	-	-	-	689	2,492	7
	Anhara	East Gojam	Aneaded	Conflict	69	245	2	20	76	1	-	-	-	89	321	3
	Anhara	East Gojam	Blbuqn	Conflict	640	2,409	4	-	-	-	-	-	-	640	2,409	4
	Anhara	East Gojam	Debre Elias	Conflict	162	517	3	-	-	-	-	-	-	162	517	3
	Anhara	East Gojam	Enari Enawega	Conflict	198	625	4	-	-	-	-	-	-	198	625	4
	Anhara	East Gojam	Hulet Ej Enese	Conflict	288	1,098	7	-	-	-	-	-	-	288	1,098	7
	Anhara	East Gojam	Sede	Conflict	339	956	3	-	-	-	-	-	-	339	956	3
	Anhara	North Gonder	Addi Arekay	Conflict	-	-	-	-	-	-	4,960	13,500	2	4,960	13,500	2
	Anhara	North Gonder	Debarak	Conflict	121	347	3	1,536	3,480	2	-	-	-	1,657	3,827	5
	Anhara	North Gonder	Dabat	Conflict	1,520	4,919	8	169	659	3	-	-	-	1,689	5,578	11
	Anhara	North Gonder	Debrebirhan City Administration	Conflict	678	2,177	4	-	-	-	-	-	-	678	2,177	4
	Anhara	North Gonder	Debarak City Administration	Conflict	-	-	-	12,640	44,272	3	-	-	-	12,640	44,272	3
	Anhara	North Gonder	Jananora	Conflict	226	381	5	-	-	-	-	-	-	226	381	5
	Anhara	North Shewa (R3)	Minja Shenkora	Conflict	327	1,367	4	-	-	-	-	-	-	327	1,367	4
	Anhara	North Shewa (R3)	Menz Keya Gabriel	Conflict	359	1,786	2	176	700	2	-	-	-	535	2,486	4
	Anhara	North Shewa (R3)	Debrebirhan City Administration	Conflict	317	1,547	5	2,973	12,138	4	1,690	6,831	2	4,980	20,516	11
	Anhara	North Shewa (R3)	Menz Gera Midir	Conflict	129	361	2	79	245	2	-	-	-	208	606	4
	Anhara	North Shewa (R3)	Ensafo	Conflict	370	1,090	3	91	194	1	-	-	-	461	1,284	4
	Anhara	North Shewa (R3)	Moretna Jiru	Conflict	-	-	-	373	1,350	1	47	141	1	420	1,491	2
	Anhara	North Shewa (R3)	Ataye City Administration	Conflict	-	-	-	316	1,187	2	-	-	-	316	1,187	2
	Anhara	North Shewa (R3)	Eferatana Gidem	Conflict	-	-	-	988	3,790	4	-	-	-	988	3,790	4
	Anhara	North Shewa (R3)	Shoa Robit City Administration	Conflict	-	-	-	89	205	1	991	4,354	3	1,080	4,559	4
	Anhara	North Shewa (R3)	Alam Ketema Administration	Conflict	203	836	3	-	-	-	-	-	-	203	836	3
	Anhara	North Shewa (R3)	Antsokya	Conflict	-	-	-	150	709	2	70	315	1	220	1,024	3
	Anhara	North Shewa (R3)	Menz Mama Midir	Landslide	42	164	1	-	-	-	-	-	-	42	164	1
	Anhara	North Shewa (R3)	Mida Wereemo	Conflict	-	-	-	-	-	-	85	316	2	85	316	2
	Anhara	North Wollo	Habru	Conflict	197	553	5	45	130	1	9,136	20,100	1	9,378	20,783	7
	Anhara	North Wollo	Wadla	Conflict	57	179	1	-	-	-	-	-	-	57	179	1
	Anhara	North Wollo	Guba Lafo	Conflict	56	178	2	-	-	-	-	-	-	56	178	2
	Anhara	North Wollo	Meresa City Administration	Conflict	98	237	1	24	44	1	-	-	-	122	281	2
	Anhara	North Wollo	Woldiya City Administration	Conflict	188	571	5	59	137	1	-	-	-	247	708	6
	Anhara	North Wollo	Lalibela City Administration	Conflict	386	1,203	5	-	-	-	-	-	-	386	1,203	5
	Anhara	North Wollo	Lasta	Conflict	627	1,810	8	168	469	2	-	-	-	795	2,279	10
	Anhara	North Wollo	Meiket	Conflict	175	437	3	-	-	-	-	-	-	175	437	3
	Anhara	North Wollo	Flakit City Administration	Conflict	327	1,093	2	-	-	-	-	-	-	327	1,093	2
	Anhara	North Wollo	Gashena City Administration	Conflict	114	401	1	-	-	-	-	-	-	114	401	1
	Anhara	North Wollo	Gidan	Conflict	301	930	2	-	-	-	-	-	-	301	930	2
	Anhara	North Wollo	Hara City Administration	Conflict	142	439	4	-	-	-	26	107	1	168	546	5
	Anhara	North Wollo	Kobo City Administration	Conflict	322	1,166	4	-	-	-	-	-	-	322	1,166	4
	Anhara	North Wollo	Raya Kobo	Conflict	546	1,785	10	-	-	-	-	-	-	546	1,785	10
	Anhara	Oromia	Bati	Conflict	-	-	-	-	-	-	40	160	1	40	160	1
	Anhara	Oromia	Artuma Fursi	Conflict	-	-	-	499	2,104	4	-	-	-	499	2,104	4
	Anhara	Oromia	Kemissie City Administration	Conflict	-	-	-	52	260	2	-	-	-	52	260	2
	Anhara	South Gonder	Anda Bet	Conflict	736	2,707	4	-	-	-	-	-	-	736	2,707	4
	Anhara	South Gonder	Debre Tabor City Administration	Conflict	1,114	4,217	6	82	303	1	-	-	-	1,196	4,520	7
	Anhara	South Gonder	Isite	Conflict	872	4,063	7	-	-	-	-	-	-	872	4,063	7
	Anhara	South Gonder	Farta	Conflict	286	1,070	2	-	-	-	-	-	-	286	1,070	2
	Anhara	South Gonder	Addis Zemen City Administration	Conflict	352	579	4	-	-	-	-	-	-	352	579	4
	Anhara	South Gonder	Dera	Conflict	272	1,186	3	-	-	-	-	-	-	272	1,186	3
	Anhara	South Gonder	Guna Begemidir	Conflict	331	986	1	-	-	-	-	-	-	331	986	1
	Anhara	South Gonder	Nefas Mewicha city Adminstration	Conflict	355	1,095	2	-	-	-	-	-	-	355	1,095	2
	Anhara	South Gonder	Sede Muja	Conflict	1,299	5,899	2	-	-	-	-	-	-	1,299	5,899	2

Round	Region	Zone	Woreda	Cause	Before 2021			During 2021			In 2022			Total HH	Total Individuals	Total Sites
					HH	Individuals	Sites	HH	Individuals	Sites	HH	Individuals	Sites			
Site Assessment Round 29 (1 March - 18 April 2022)	Amhara	South Gondar	Woreta City Administration	Conflict	516	1,851	3	-	-	-	43	141	1	559	1,992	4
	Amhara	South Gondar	Ebenat	Conflict	193	854	2	130	645	1	-	-	-	323	1,499	3
	Amhara	South Gondar	Mekane Yesus City Administration	Conflict	1,523	6,353	3	-	-	-	-	-	-	1,523	6,353	3
	Amhara	South Gondar	Simada	Conflict	402	1,928	6	-	-	-	-	-	-	402	1,928	6
	Amhara	South Gondar	Hamusit City Administration	Conflict	85	284	1	-	-	-	-	-	-	85	284	1
	Amhara	South Gondar	Lay Gayint	Conflict	175	441	2	-	-	-	-	-	-	175	441	2
	Amhara	South Gondar	Tach Gayint	Conflict	438	2,043	2	-	-	-	-	-	-	438	2,043	2
	Amhara	South Gondar	Wegeda City Administration	Conflict	686	3,431	2	-	-	-	-	-	-	686	3,431	2
	Amhara	South Wollo	Kalu	Conflict	198	712	2	442	1,641	1	-	-	-	640	2,353	3
	Amhara	South Wollo	Borena	Conflict	44	120	1	46	221	1	-	-	-	90	341	2
	Amhara	South Wollo	Thebulederie	Conflict	211	689	2	412	1,344	1	-	-	-	623	2,033	3
	Amhara	South Wollo	Amaseel	Conflict	110	344	1	-	-	-	-	-	-	110	344	1
	Amhara	South Wollo	Jama	Conflict	36	144	1	31	129	1	-	-	-	67	273	2
	Amhara	South Wollo	Wereilu city Administration	Conflict	53	200	1	-	-	-	-	-	-	53	200	1
	Amhara	South Wollo	Kelala	Conflict	80	268	2	-	-	-	-	-	-	80	268	2
	Amhara	South Wollo	Kutaber	Conflict	-	-	-	174	604	1	-	-	-	174	604	1
	Amhara	South Wollo	Legheida	Conflict	-	-	-	26	90	1	-	-	-	26	90	1
	Amhara	South Wollo	Mekane Selam City Administration	Conflict	88	337	2	556	2,301	6	-	-	-	644	2,638	8
	Amhara	South Wollo	Tenta	Conflict	-	-	-	390	1,607	8	-	-	-	390	1,607	8
	Amhara	South Wollo	Worebabu	Conflict	-	-	-	134	670	1	-	-	-	134	670	1
	Amhara	Special Woreda	Argoba	Conflict	505	1,757	3	-	-	-	-	-	-	505	1,757	3
	Amhara	Wag Himra	Dehana	Conflict	218	558	4	-	-	-	53	124	1	271	682	5
	Amhara	Wag Himra	Gaz Gliba	Conflict	313	953	3	-	-	-	-	-	-	313	953	3
	Amhara	Wag Himra	Sahla	Conflict	136	366	2	-	-	-	-	-	-	136	366	2
	Amhara	Wag Himra	Wag Himra	Conflict	96	261	1	-	-	-	282	1,409	1	378	1,670	2
	Amhara	Wag Himra	Ziquala	Conflict	4,120	17,772	2	-	-	-	112	832	1	4,232	18,604	3
	Amhara	Wag Himra	Sekota City Administration	Conflict	4,037	17,261	2	-	-	-	933	5,777	2	4,970	23,038	4
	Amhara	West Gojam	Sekela	Conflict	4,474	20,448	13	40	190	1	-	-	-	4,514	20,638	14
	Amhara	West Gojam	Dega Damot	Conflict	10,702	48,637	19	571	2,300	2	-	-	-	11,273	50,937	21
	Amhara	West Gojam	Quarit	Conflict	7,855	44,055	19	500	2,848	2	-	-	-	8,355	46,903	21
	Amhara	West Gojam	Jabi Tehnan	Conflict	2,518	12,430	16	90	444	1	-	-	-	2,608	12,874	17
	Amhara	West Gojam	Wemberna	Conflict	198	1,000	3	37	181	1	-	-	-	235	1,181	4
	Amhara	West Gojam	Finote Selam City Administration	Conflict	487	3,086	5	-	-	-	-	-	-	497	3,086	5
	Amhara	West Gojam	Adet	Conflict	787	3,756	5	-	-	-	-	-	-	787	3,756	5
	Amhara	West Gojam	Bure	Conflict	1,203	4,379	5	105	419	2	-	-	-	1,308	4,798	7
	Amhara	West Gojam	Debab Adhefer	Conflict	306	1,222	2	-	-	-	-	-	-	306	1,222	2
	Amhara	West Gojam	Dembecha	Conflict	1,833	8,920	10	-	-	-	-	-	-	1,833	8,920	10
	Amhara	West Gojam	Yilmana Densa	Conflict	477	2,202	4	-	-	-	-	-	-	477	2,202	4
	Amhara	West Gojam	Bure City Administration	Conflict	1,901	12,026	7	-	-	-	-	-	-	1,901	12,026	7
	Amhara	West Gojam	Debab Mecha	Conflict	1,223	4,498	5	-	-	-	-	-	-	1,223	4,498	5
	Amhara	West Gojam	Gonji	Conflict	2,644	10,607	12	-	-	-	-	-	-	2,644	10,607	12
	Amhara	West Gojam	Merawi Town	Conflict	145	622	2	-	-	-	-	-	-	145	622	2
	Amhara	West Gojam	Semen Mecha	Conflict	202	925	2	-	-	-	-	-	-	202	925	2
	Amhara	West Gojam	Mietena	Conflict	84	295	1	-	-	-	-	-	-	84	295	1
	Amhara	West Gondar	Midra Genet	Conflict	47	186	1	166	625	1	-	-	-	213	811	2
	Amhara Total				84,897	363,969	460	28,337	107,825	99	19,072	57,788	24	132,306	529,582	577
	Beneshangul Gumuz	Asosa	Bildigilu	Conflict	-	485	2	2,276	11,357	7	-	-	-	2,403	11,842	9
	Beneshangul Gumuz	Asosa	Sherkole	Conflict	-	-	-	282	1,363	3	-	-	-	282	1,363	3
	Beneshangul Gumuz	Asosa	Bambasi	Conflict	-	-	-	2,660	9,874	15	-	-	-	2,660	9,874	15
	Beneshangul Gumuz	Asosa	Asosa	Conflict	-	-	-	21	58	1	780	3,122	1	801	3,180	2
	Beneshangul Gumuz	Asosa Town Administration	Woreda 1	Conflict	-	-	-	104	467	2	137	510	3	241	977	5
	Beneshangul Gumuz	Asosa Town Administration	Woreda 2	Conflict	40	133	1	192	703	5	-	-	-	232	836	6
	Beneshangul Gumuz Total				167	618	3	5,535	23,822	33	917	3,632	4	6,619	28,072	40
	Dire Dawa	Dire Dawa City	Kazira	Conflict	114	570	1	-	-	-	-	-	-	114	570	1
	Gambella	Agnuak	Gog	Conflict	755	4,113	2	-	-	-	-	-	-	755	4,113	2
	Gambella	Agnuak	Jore	Conflict	75	421	1	-	-	-	-	-	-	75	421	1
	Gambella	Nuer	Jikawo	Seasonal flood	-	-	-	813	5,831	2	-	-	-	813	5,831	2
	Gambella	Nuer	Lare	Conflict	1,691	7,507	3	-	-	-	42	254	1	1,733	7,761	4

Round	Region	Zone	Woreda	Cause	Before 2021			During 2021			In 2022			Total HH	Total Individuals	Total Sites
					HH	Individuals	Sites	HH	Individuals	Sites	HH	Individuals	Sites			
Site Assessment Round 29 (1 March -18 April 2022)	Gambella	Nuer	Wantawo	Conflict	1,387	6,935	4	-	-	-	-	-	-	1,387	6,935	4
	Gambella	Nuer	Wantawo	Seasonal flood	150	750	1	210	1,050	1	-	-	-	360	1,800	2
	Gambella Total				4,058	19,726	11	1,023	6,881	3	42	254	1	5,123	26,861	15
	Hareri	Hareri	Abadir	Conflict	25	125	1	-	-	-	-	-	-	25	125	1
	Hareri	Hareri	Abo Ker	Conflict	30	170	1	-	-	-	-	-	-	30	170	1
	Hareri	Hareri	Amir Nur	Conflict	85	326	1	-	-	-	-	-	-	85	326	1
	Hareri	Hareri	Hakim	Conflict	324	1,517	2	-	-	-	-	-	-	324	1,517	2
	Hareri	Hareri	Jenela	Conflict	32	200	1	-	-	-	-	-	-	32	200	1
	Hareri	Hareri	Shenkor	Conflict	23	51	1	-	-	-	-	-	-	23	51	1
	Hareri	Hareri	Soffi	Conflict	101	509	1	-	-	-	-	-	-	101	509	1
	Hareri Total				620	2,898	8	-	-	-	-	-	-	620	2,898	8
	Oromia	Arsi	Degeluna Tijo	Conflict	33	129	1	-	-	-	-	-	-	33	129	1
	Oromia	Arsi	Golicha Arsi	Conflict	28	90	1	-	-	-	-	-	-	28	90	1
	Oromia	Arsi	Golicha Arsi	Flash flood	511	2,658	6	-	-	-	-	-	-	511	2,658	6
	Oromia	Arsi	Merti	Conflict	24	134	1	-	-	-	-	-	-	24	134	1
	Oromia	Arsi	Amigna	Conflict	41	144	1	-	-	-	-	-	-	41	144	1
	Oromia	Arsi	Bele Gesgar	Conflict	30	113	1	-	-	-	-	-	-	30	113	1
	Oromia	Arsi	Hitoso	Conflict	24	80	1	-	-	-	-	-	-	24	80	1
	Oromia	Arsi	Robe	Conflict	157	509	1	-	-	-	-	-	-	157	509	1
	Oromia	Arsi	Shika	Conflict	156	425	1	-	-	-	-	-	-	156	425	1
	Oromia	Arsi	Sude	Conflict	27	85	1	-	-	-	-	-	-	27	85	1
	Oromia	Arsi	Aseko	Conflict	22	77	1	-	-	-	-	-	-	22	77	1
	Oromia	Arsi	Dikis	Conflict	21	56	1	-	-	-	-	-	-	21	56	1
	Oromia	Bale	Neda Welabu	Conflict	770	3,871	3	-	-	-	-	-	-	770	3,871	3
	Oromia	Bale	Belo Mena	Conflict	1,140	5,629	2	-	-	-	-	-	-	1,140	5,629	2
	Oromia	Bale	Gasera	Conflict	67	154	1	-	-	-	-	-	-	67	154	1
	Oromia	Bale	Agarra	Conflict	63	147	1	-	-	-	-	-	-	63	147	1
	Oromia	Bale	Goba	Conflict	24	57	1	-	-	-	-	-	-	24	57	1
	Oromia	Bale	Shana	Conflict	57	175	2	-	-	-	-	-	-	57	175	2
	Oromia	Borena	Guchi	Conflict	7,519	36,844	10	-	-	-	-	-	-	7,519	36,844	10
	Oromia	Borena	Guchi	Other	1,591	7,805	2	-	-	-	-	-	-	1,591	7,805	2
	Oromia	Borena	Moyale	Conflict	4,001	19,859	4	-	-	-	-	-	-	4,001	19,859	4
	Oromia	Borena	Moyale	Other	3,393	16,965	3	-	-	-	-	-	-	3,393	16,965	3
	Oromia	Borena	Aero	Conflict	518	2,440	1	-	-	-	-	-	-	518	2,440	1
	Oromia	Borena	Wachile	Conflict	1,216	5,750	4	-	-	-	-	-	-	1,216	5,750	4
	Oromia	Borena	Dhaas	Conflict	450	2,050	1	-	-	-	-	-	-	450	2,050	1
	Oromia	Borena	Yabelo	Drought	-	-	-	-	-	-	381	1,905	2	381	1,905	2
	Oromia	Borena	Dillo	Conflict	519	2,595	3	-	-	-	-	-	-	519	2,595	3
	Oromia	Borena	Dillo	Other	203	1,015	1	-	-	-	-	-	-	203	1,015	1
	Oromia	Borena	Elwaye	Drought	-	-	-	-	-	-	296	1,480	2	296	1,480	2
	Oromia	Burnto Bedele	Dedesa	Other	1,316	6,781	2	-	-	-	-	-	-	1,316	6,781	2
	Oromia	East Bale	Lege Hida	Conflict	44	197	1	-	-	-	-	-	-	44	197	1
	Oromia	East Bale	Lege Hida	Drought	-	-	-	-	-	-	670	3,372	3	670	3,372	3
	Oromia	East Bale	Rayitu	Conflict	264	1,453	2	-	-	-	-	-	-	264	1,453	2
	Oromia	East Bale	Rayitu	Drought	-	-	-	-	-	-	638	3,260	6	638	3,260	6
	Oromia	East Bale	Ginir	Conflict	97	470	1	-	-	-	-	-	-	97	470	1
	Oromia	East Bale	Ginir	Drought	-	-	-	-	-	-	931	4,784	10	931	4,784	10
	Oromia	East Bale	Golicha Bale	Conflict	33	60	1	-	-	-	-	-	-	33	60	1
	Oromia	East Bale	Golicha Bale	Drought	-	-	-	-	-	-	1,112	5,765	9	1,112	5,765	9
	Oromia	East Bale	Dawe Serer	Conflict	901	4,250	3	-	-	-	-	-	-	901	4,250	3
	Oromia	East Bale	Dawe Serer	Drought	-	-	-	-	-	-	4,479	23,822	8	4,479	23,822	8
	Oromia	East Bale	Sewena	Conflict	1,689	7,706	4	-	-	-	-	-	-	1,689	7,706	4
	Oromia	East Harerge	Babile	Conflict	919	4,308	15	-	-	-	-	-	-	919	4,308	15
	Oromia	East Harerge	Chinakben	Conflict	5,264	26,084	27	827	4,185	4	-	-	-	6,091	30,269	31
	Oromia	East Harerge	Fedis	Conflict	3,204	13,323	10	-	-	-	-	-	-	3,204	13,323	10
	Oromia	East Harerge	Gursum	Conflict	1,381	10,712	23	-	-	-	-	-	-	1,381	10,712	23
	Oromia	East Harerge	Kersa	Conflict	412	1,716	5	-	-	-	-	-	-	412	1,716	5
	Oromia	East Harerge	Kumbi	Conflict	5,551	32,585	4	-	-	-	-	-	-	5,551	32,585	4
	Oromia	East Harerge	Meyu Muluke	Conflict	2,500	12,529	2	-	-	-	-	-	-	2,500	12,529	2

Round	Region	Zone	Woreda	Cause	Before 2021			During 2021			In 2022			Total HH	Total Individuals	Total Sites
					HH	Individuals	Sites	HH	Individuals	Sites	HH	Individuals	Sites			
Site Assessment Round 29 (1 March - 18 April 2022)	Oromia	East Harerge	Midega Tola	302	1,364	7	-	-	-	-	-	-	302	1,364	7	
	Oromia	East Harerge	Goro Gutu	738	3,080	9	-	-	-	-	-	-	738	3,080	9	
	Oromia	East Harerge	Kombolcha	88	326	3	-	-	-	-	-	-	88	326	3	
	Oromia	East Harerge	Bedeno	124	528	2	-	-	-	-	-	-	124	528	2	
	Oromia	East Harerge	Deder	736	2,238	14	-	-	-	-	-	-	736	2,238	14	
	Oromia	East Harerge	Garo Muti	208	656	6	-	-	-	-	-	-	208	656	6	
	Oromia	East Harerge	Girawa	152	624	4	-	-	-	-	-	-	152	624	4	
	Oromia	East Harerge	East Harerge	130	594	6	43	194	1	-	-	-	173	788	7	
	Oromia	East Harerge	Jarso	1,501	7,233	7	73	355	2	-	-	-	1,574	7,588	9	
	Oromia	East Harerge	Kurfa Chele	54	209	1	-	-	-	-	-	-	54	209	1	
	Oromia	East Harerge	Meta	113	423	4	-	-	-	-	-	-	113	423	4	
	Oromia	East Harerge	Meta	233	924	1	-	-	-	-	-	-	233	924	1	
	Oromia	East Harerge	Golo Oda	147	836	1	-	-	-	-	-	-	147	836	1	
	Oromia	East Harerge	Awaday Administrative Town	98	533	1	-	-	-	-	-	-	98	533	1	
	Oromia	East Harerge	Babile Administrative Town	142	761	1	-	-	-	-	-	-	142	761	1	
	Oromia	East Harerge	Deder Administrative Town	970	4,191	8	-	-	-	-	-	-	970	4,191	8	
	Oromia	East Harerge	Haro Maya Administrative Town	92	386	1	-	-	-	-	-	-	92	386	1	
	Oromia	East Wallaga	Diga	-	-	-	610	3,456	8	-	-	-	610	3,456	8	
	Oromia	East Wallaga	Sasiga	-	-	-	204	1,094	4	-	-	-	204	1,094	4	
	Oromia	East Wallaga	Gida Ayana	-	-	-	1,465	7,960	8	-	-	-	1,465	7,960	8	
	Oromia	East Wallaga	Guto Gida	-	-	-	511	2,886	8	-	-	-	511	2,886	8	
	Oromia	East Wallaga	Haro Limu	413	2,011	1	885	4,746	14	-	-	-	1,298	6,757	15	
	Oromia	East Wallaga	Nekemte Town	663	3,996	6	1,616	9,030	21	-	-	-	2,279	13,026	27	
	Oromia	East Wallaga	Gobu Sevo	-	-	-	794	6,219	4	106	530	1	900	6,749	5	
	Oromia	East Wallaga	Leqa Dulleacha	-	-	-	195	1,042	4	-	-	-	195	1,042	4	
	Oromia	East Wallaga	Slou Sire	-	-	-	1,788	11,110	6	-	-	-	1,788	11,110	6	
	Oromia	East Wallaga	Wayu Tuka	-	-	-	439	2,452	2	32	224	1	471	2,676	3	
	Oromia	Guji	Guji (Harentema)	-	-	-	-	-	-	252	1,364	2	252	1,364	2	
	Oromia	Guji	Goro Dola	380	2,354	1	847	5,460	1	-	-	-	1,227	7,814	2	
	Oromia	Guji	Goro Dola	-	-	-	-	-	-	2,269	18,683	1	2,269	18,683	1	
	Oromia	Guji	Other	-	-	-	1,061	5,305	1	-	-	-	1,061	5,305	1	
	Oromia	Guji	Liben	650	3,364	6	-	-	-	-	-	-	650	3,364	6	
	Oromia	Guji	Liben	-	-	-	-	-	-	4,028	21,066	1	4,028	21,066	1	
	Oromia	Guji	Other	6,314	32,117	1	-	-	-	-	-	-	6,314	32,117	1	
	Oromia	Guji	Odo Shakiso	-	-	-	27	137	1	-	-	-	27	137	1	
	Oromia	Guji	Negele City Administration	346	1,730	1	-	-	-	3,066	17,667	1	3,46	17,30	1	
	Oromia	Guji	Negele City Administration	-	-	-	368	2,892	2	-	-	-	368	2,892	2	
	Oromia	Guji	Wadera	-	-	-	588	4,623	1	-	-	-	588	4,623	1	
	Oromia	Guji	Wadera	-	-	-	-	-	-	-	-	-	-	-	-	
	Oromia	Jimma	Botor Tollay	1,231	5,615	6	-	-	-	-	-	-	1,231	5,615	6	
Oromia	Jimma	Kersa	834	4,895	7	-	-	-	-	-	-	834	4,895	7		
Oromia	Jimma	Sigmo	29	79	1	-	-	-	-	-	-	29	79	1		
Oromia	Jimma	Gera	220	1,015	2	-	-	-	-	-	-	220	1,015	2		
Oromia	Jimma	Gumay	49	96	1	-	-	-	-	-	-	49	96	1		
Oromia	Jimma	Jimma Town	612	2,484	2	-	-	-	-	-	-	612	2,484	2		
Oromia	Jimma	Setema	40	69	1	-	-	-	-	-	-	40	69	1		
Oromia	Jimma	Dale Sadi	76	413	2	-	-	-	-	-	-	76	413	2		
Oromia	Kelem Wallaga	Kelem Wallaga	50	272	2	-	-	-	-	-	-	50	272	2		
Oromia	Kelem Wallaga	Chenka Sudi	909	4,834	6	318	1,846	3	-	-	-	1,227	6,680	9		
Oromia	Kelem Wallaga	Dambi Dolo	-	-	-	180	995	1	-	-	-	180	995	1		
Oromia	Kelem Wallaga	Kelem Wallaga	-	-	-	434	2,307	5	-	-	-	434	2,307	5		
Oromia	Kelem Wallaga (R4)	Kuyu	42	92	1	222	2,288	3	308	2,293	3	572	4,673	7		
Oromia	North Shewa (R4)	Wara Jarso	669	1	1,770	8,031	4	-	-	-	-	1,988	8,700	5		
Oromia	North Shewa (R4)	Degem	218	669	-	201	1,055	3	61	146	1	262	1,201	4		
Oromia	North Shewa (R4)	Yaya Gulele	-	-	-	-	-	-	48	339	1	48	339	1		
Oromia	South West Shewa	Waliso	20	44	1	-	-	-	-	-	-	20	44	1		
Oromia	South West Shewa	Wenchi	31	66	1	-	-	-	-	-	-	31	66	1		
Oromia	South West Shewa	Walliso Town	31	113	1	-	-	-	-	-	-	31	113	1		
Oromia	West Arsi	Gedeb Asasa	52	185	1	-	-	-	-	-	-	52	185	1		

Round	Region	Zone	Woreda	Cause	Before 2021			During 2021			In 2022			Total HH	Total Individuals	Total Sites
					HH	Individuals	Sites	HH	Individuals	Sites	HH	Individuals	Sites			
Site Assessment Round 29 (1 March - 18 April 2022)	Oromia	West Arsi	Shashemene Zuria	Flash flood	52	235	2	-	-	-	-	-	-	52	235	2
	Oromia	West Arsi	Siraro	Conflict	3,317	16,911	9	-	-	-	-	-	-	3,317	16,911	9
	Oromia	West Arsi	Adaba	Conflict	71	177	1	-	-	-	-	-	-	71	177	1
	Oromia	West Arsi	Dodola	Conflict	41	114	1	-	-	-	-	-	-	41	114	1
	Oromia	West Arsi	Bishan Guracha City Administration	Flash flood	21	105	1	-	-	-	-	-	-	21	105	1
	Oromia	West Guji	Dugeda Dawa	Drought	707	4,731	2	11,422	56,306	12	1,641	8,612	3	13,770	69,649	17
	Oromia	West Guji	Dugeda Dawa	Other	-	-	-	1,480	7,613	2	-	-	-	1,480	7,613	2
	Oromia	West Guji	Galana	Drought	-	-	-	-	-	-	114	631	1	114	631	1
	Oromia	West Guji	Galana	Other	-	-	-	711	4,985	1	765	4,336	3	1,476	9,321	4
	Oromia	West Guji	Suro Barguda	Other	330	1,318	2	-	-	-	670	4,043	1	1,000	5,361	3
	Oromia	West Guji	Abaya	Other	276	1,683	1	125	1,405	1	-	-	-	401	3,088	2
	Oromia	West Guji	Bule Hora	Drought	-	-	-	55	335	1	143	715	2	198	1,050	3
	Oromia	West Guji	Bule Hora	Other	-	-	-	2,749	10,493	2	-	-	-	2,749	10,493	2
	Oromia	West Guji	Keira Town	Other	-	-	-	1,884	9,677	2	-	-	-	1,884	9,677	2
	Oromia	West Guji	Bule Hora Town	Other	-	-	-	3,014	18,644	8	342	1,857	6	3,356	20,501	14
	Oromia	West Harerge	Bordode	Conflict	1,907	9,270	10	-	-	-	-	-	-	1,907	9,270	10
	Oromia	West Harerge	Doba	Conflict	154	804	3	-	-	-	-	-	-	154	804	3
	Oromia	West Harerge	Mieso	Conflict	1,567	8,214	9	-	-	-	-	-	-	1,567	8,214	9
	Oromia	West Harerge	Daro Lebu	Conflict	590	3,083	3	-	-	-	-	-	-	590	3,083	3
	Oromia	West Harerge	Gemechis	Conflict	33	83	1	-	-	-	-	-	-	33	83	1
	Oromia	West Harerge	Hawi Gudina	Conflict	70	350	1	-	-	-	-	-	-	70	350	1
	Oromia	West Harerge	Shanan Dhuuuggo	Conflict	51	152	1	-	-	-	-	-	-	51	152	1
	Oromia	West Harerge	Chiro Town	Conflict	43	58	1	-	-	-	-	-	-	43	58	1
	Oromia	West Harerge	Gelensso Administrative Town	Conflict	87	296	1	-	-	-	-	-	-	87	296	1
	Oromia	West Harerge	Hima Administrative Town	Conflict	119	321	1	32	115	1	-	-	-	151	436	2
	Oromia	West Harerge	Machara Administrative Town	Conflict	44	181	1	-	-	-	-	-	-	44	181	1
	Oromia	West Shewa	Dendi	Conflict	34	77	1	-	-	-	-	-	-	34	77	1
	Oromia	West Shewa	Ambo Town	Conflict	47	132	1	61	363	1	-	-	-	108	495	2
	Oromia	West Shewa	Adda Beiga	Conflict	-	-	-	306	1,761	4	-	-	-	306	1,761	4
	Oromia	West Shewa	Bako Tibe	Conflict	-	-	-	1,009	3,098	6	469	1,952	3	1,478	5,050	9
	Oromia	West Shewa	Liben Jawi	Conflict	-	-	-	70	330	3	-	-	-	70	330	3
	Oromia	West Shewa	Toke Kutaye	Conflict	-	-	-	-	-	-	120	696	2	120	696	2
	Oromia	West Wallaga	Boji Dimeji	Conflict	1,049	5,678	4	-	-	-	-	-	-	1,049	5,678	4
	Oromia	West Wallaga	Lalo Asabi	Conflict	266	1,570	2	81	442	2	-	-	-	347	2,012	4
	Oromia	West Wallaga	Mana Sibru	Other	-	-	-	-	-	-	52	315	1	52	315	1
	Oromia	West Wallaga	Gimbi	Conflict	59	315	1	-	-	-	-	-	-	59	315	1
	Oromia	West Wallaga	Gimbi Town	Conflict	321	2,012	1	517	2,996	5	-	-	-	838	5,008	6
	Oromia	West Wallaga	Lata Sibru	Conflict	492	2,414	4	-	-	-	-	-	-	492	2,414	4
	Oromia	West Wallaga	Mandi Town	Conflict	1,447	8,230	4	1,463	8,894	7	42	216	1	2,952	17,340	12
	Oromia	West Wallaga	Qliku Kara	Conflict	501	2,640	3	-	-	-	-	-	-	501	2,640	3
	Oromia	West Wallaga	Najo Town	Conflict	1,182	6,439	4	873	4,668	7	-	-	-	2,055	11,107	11
	Oromia	West Wallaga	Ayira	Conflict	-	-	-	76	502	1	-	-	-	76	502	1
	Oromia	West Wallaga	Guliso	Conflict	-	-	-	151	584	2	36	209	1	187	793	3
	Oromia Total				80,096	401,042	360	44,611	240,546	180	20,005	112,615	75	144,712	754,203	615
	Sidama	Zone 1	Belate Zuria	Conflict	4,685	28,315	15	-	-	-	-	-	-	4,685	28,315	15
	Sidama	Zone 1	Hawassa Zuria	Conflict	-	-	-	478	2,282	9	-	-	-	478	2,282	9
	Sidama	Zone 1	Hawassa Zuria	Flash flood	254	1,233	4	-	-	-	-	-	-	254	1,233	4
	Sidama	Zone 1	Bensa	Conflict	280	3,160	1	-	-	-	-	-	-	280	3,160	1
	Sidama	Zone 1	Alera Chiko	Conflict	-	-	-	113	709	5	-	-	-	113	709	5
	Sidama	Zone 1	Bona Zuria	Conflict	-	-	-	22	154	1	-	-	-	22	154	1
	Sidama	Zone 1	Boricha	Conflict	-	-	-	84	440	3	-	-	-	84	440	3
	Sidama	Zone 1	Chiri	Conflict	-	-	-	464	2,659	1	621	4,302	1	1,085	6,961	2
	Sidama	Zone 1	Hawela	Conflict	-	-	-	91	501	2	-	-	-	91	501	2
	Sidama	Zone 1	Hula	Conflict	-	-	-	158	863	6	-	-	-	158	863	6
	Sidama	Zone 1	Worosho	Conflict	-	-	-	141	812	5	-	-	-	141	812	5
	Sidama Total				5,219	32,708	20	1,551	8,420	32	621	4,302	1	7,391	45,430	53
	SNNP	Amaro Special Woreda	Amaro Special Woreda	Conflict	6,279	25,442	15	2,443	11,435	5	-	-	-	8,722	36,877	20
	SNNP	Basketo	Basketo SP Woreda	Conflict	76	454	3	-	-	-	-	-	-	76	454	3
	SNNP	Burji Special Woreda	Burji	Conflict	626	3,258	4	-	-	-	-	-	-	626	3,258	4

Round	Region	Zone	Woreda	Cause	Before 2021			During 2021			In 2022			Total HH	Total Individuals	Total Sites
					HH	Individuals	Sites	HH	Individuals	Sites	HH	Individuals	Sites			
Site Assessment Round 29 (1 March - 18 April 2022)	SNNP	Derashe Special Woreda	Derashe Special Woreda	Conflict	1,745	10,125	1	-	-	-	-	-	-	1,745	10,125	1
	SNNP	Gamo	Mirab Abaya	Landslide	287	1,865	1	-	-	-	-	-	-	287	1,865	1
	SNNP	Gamo	Gerese	Landslide	26	172	1	23	137	1	-	-	-	49	309	2
	SNNP	Gofa	Demba Gofa	Landslide	45	270	1	-	-	-	-	-	-	45	270	1
	SNNP	Gofa	Geze Gofa	Landslide	300	1,849	5	-	-	-	-	-	-	300	1,849	5
	SNNP	Gofa	Melo Koza	Landslide	979	6,874	7	393	2,358	3	123	800	1	1,495	10,032	11
	SNNP	Gurage	Meskan	Conflict	693	4,714	7	99	718	2	-	-	-	792	5,432	9
	SNNP	Gurage	Welkite Town Administration	Conflict	-	-	-	36	140	1	-	-	-	36	140	1
	SNNP	Gurage	Abeshege	Conflict	-	-	-	173	1,058	2	186	1,140	2	359	2,198	4
	SNNP	Hadiya	Dune	Conflict	823	5,614	21	-	-	-	-	-	-	823	5,614	21
	SNNP	Hadiya	Misrak Badawacho	Conflict	415	2,765	10	-	-	-	-	-	-	415	2,765	10
	SNNP	Hadiya	Misrak Badawacho	Seasonal flood	28	157	1	-	-	-	-	-	-	28	157	1
	SNNP	Hadiya	Analemmo	Conflict	277	1,166	4	-	-	-	-	-	-	277	1,166	4
	SNNP	Hadiya	Shashogo	Conflict	71	497	2	30	210	1	-	-	-	101	707	3
	SNNP	Hadiya	Shashogo	Seasonal flood	534	3,724	3	-	-	-	-	-	-	534	3,724	3
	SNNP	Hadiya	Soro	Conflict	458	3,091	13	-	-	-	-	-	-	458	3,091	13
	SNNP	Hadiya	Mirab Badawacho	Conflict	-	-	-	72	340	2	-	-	-	72	340	2
	SNNP	Hadiya	Gembora	Conflict	34	262	1	-	-	-	-	-	-	34	262	1
	SNNP	Hadiya	Lemo	Conflict	23	134	1	21	114	1	-	-	-	44	248	2
	SNNP	Hadiya	Mirab Soro	Conflict	134	671	4	-	-	-	-	-	-	134	671	4
	SNNP	Kembata Tembaro	Kedlada Gannella	Conflict	283	2,016	9	-	-	-	-	-	-	283	2,016	9
	SNNP	Kembata Tembaro	Anigacha	Conflict	210	1,518	5	43	309	1	-	-	-	253	1,827	6
	SNNP	Kembata Tembaro	Daniboya	Conflict	194	1,675	6	-	-	-	-	-	-	194	1,675	6
	SNNP	Kembata Tembaro	Doya Gena	Conflict	77	447	3	-	-	-	-	-	-	77	447	3
	SNNP	Kembata Tembaro	Hadero Tunito	Conflict	205	1,397	5	-	-	-	-	-	-	205	1,397	5
	SNNP	Kembata Tembaro	Tembaro	Conflict	62	410	3	-	-	-	-	-	-	62	410	3
	SNNP	Kembata Tembaro	Adilo	Conflict	66	308	2	-	-	-	-	-	-	66	308	2
	SNNP	Konso	Karat Zuria	Conflict	206	1,132	1	-	-	-	-	-	-	206	1,132	1
	SNNP	Konso	Segen Zuria	Conflict	135	763	1	99	591	2	-	-	-	234	1,354	3
	SNNP	Konso	Koline Cluster	Conflict	-	-	-	-	-	-	197	1,432	3	197	1,432	3
	SNNP	Konso	Kena	Conflict	-	-	-	370	2,531	2	-	-	-	370	2,531	2
	SNNP	Silti	Mirab Azenet Berbere	Conflict	155	554	2	-	-	-	-	-	-	155	554	2
	SNNP	Silti	Mirab Azenet Berbere	Conflict	33	199	1	-	-	-	-	-	-	33	199	1
	SNNP	Silti	Sankura	Conflict	74	361	2	-	-	-	-	-	-	74	361	2
	SNNP	Silti	Wilbareg	Conflict	199	617	3	25	175	1	-	-	-	224	792	4
	SNNP	Silti	Worabe Ketema Astedader	Conflict	242	958	4	-	-	-	-	-	-	242	958	4
	SNNP	Silti	Alicho Worro	Conflict	108	617	2	-	-	-	-	-	-	108	617	2
	SNNP	Silti	Kibet Town Administration	Conflict	52	407	1	-	-	-	21	120	1	73	527	2
	SNNP	South Omo	Bena Tsemay	Conflict	-	-	-	-	-	-	137	685	1	137	685	1
	SNNP	South Omo	Dasenech (Kuraz)	Flash flood	7,758	36,421	10	-	-	-	-	-	-	7,758	36,421	10
	SNNP	South Omo	Dasenech (Kuraz)	Seasonal flood	4,157	19,651	14	1,391	6,770	3	-	-	-	5,548	26,421	17
	SNNP	South Omo	South Ari (Bako Gazer)	Landslide	30	125	1	-	-	-	-	-	-	30	125	1
	SNNP	Wolayita	Diguna Fango	Conflict	405	2,453	2	-	-	-	103	668	2	508	3,121	4
	SNNP	Wolayita	Kindo Dida	Landslide	562	4,312	7	-	-	-	-	-	-	562	4,312	7
	SNNP	Wolayita	Kindo Koysha	Landslide	273	1,632	5	-	-	-	-	-	-	273	1,632	5
	SNNP	Wolayita	Abela Abaya	Flash flood	600	3,836	4	-	-	-	-	-	-	600	3,836	4
	SNNP	Wolayita	Damot Sore	Landslide	110	770	2	-	-	-	-	-	-	110	770	2
	SNNP	Wolayita	Damot Weydie	Flash flood	109	826	2	-	-	-	-	-	-	109	826	2
	SNNP	Wolayita	Damot Weydie	Landslide	-	-	-	44	260	1	-	-	-	44	260	1
	SNNP	Wolayita	Damot Weydie	Seasonal flood	-	-	-	25	175	1	-	-	-	25	175	1
	SNNP	Wolayita	Kawo Koysha	Landslide	-	-	-	90	578	2	-	-	-	90	578	2
	SNNP	Wolayita	Ofa	Conflict	-	-	-	53	347	2	-	-	-	53	347	2
	SNNP	Wolayita	Damot Pulasa	Conflict	-	-	-	86	516	2	74	444	1	160	960	3
	SNNP	Yem	Yem Special Woreda	Landslide	50	230	1	-	-	-	-	-	-	50	230	1
	SNNP Total				30,208	156,739	203	5,516	28,762	35	841	5,289	11	36,565	190,790	249
	Somali	Alder	Cheret/Weyib	Drought	319	1,914	1	-	-	-	-	-	-	319	1,914	1
	Somali	Alder	Cheret/Weyib	Seasonal flood	826	4,956	1	-	-	-	-	-	-	826	4,956	1
	Somali	Alder	Dolobay	Conflict	-	-	-	280	1,680	1	-	-	-	280	1,680	1
	Somali	Alder	Dolobay	Drought	2,052	12,312	3	-	-	-	-	-	-	2,052	12,312	3

Round	Region	Zone	Woreda	Cause	Before 2021			During 2021			In 2022			Total HH	Total Individuals	Total Sites
					HH	Individuals	Sites	HH	Individuals	Sites	HH	Individuals	Sites			
Site Assessment Round 29 (1 March - 18 April 2022)	Somali	Alder	Dolobay	Seasonal flood	457	2,742	1	-	-	-	-	-	-	457	2,742	1
	Somali	Alder	Hargele	Drought	1,198	7,188	3	573	3,438	1	300	1,800	1	2,071	12,426	5
	Somali	Alder	Bare	Drought	4,351	26,166	9	70	420	1	-	-	-	4,421	26,586	10
	Somali	Alder	God God	Drought	1,132	6,792	4	-	-	-	-	-	-	1,132	6,792	4
	Somali	Alder	Qoohle	Drought	1,079	6,492	3	1,144	6,864	4	-	-	-	2,223	13,356	7
	Somali	Dawa	Hudet	Conflict	8,295	49,650	15	-	-	-	140	840	1	8,435	50,490	16
	Somali	Dawa	Hudet	Drought	-	-	-	-	-	-	488	2,928	4	488	2,928	4
	Somali	Dawa	Moyale	Conflict	13,713	82,278	10	-	-	-	125	750	1	13,838	83,028	11
	Somali	Dawa	Moyale	Drought	-	-	-	2,639	15,834	5	900	5,400	7	3,539	21,234	12
	Somali	Dawa	Mubarak	Conflict	210	1,260	1	875	5,250	2	-	-	-	1,085	6,510	3
	Somali	Dawa	Mubarak	Conflict	-	-	-	1,035	6,090	3	187	1,122	1	1,222	7,212	4
	Somali	Dawo	Boh	Drought	705	4,230	5	-	-	-	134	804	1	839	5,034	6
	Somali	Doolo	Daratole	Drought	1,417	8,502	6	-	-	-	-	-	-	1,417	8,502	6
	Somali	Doolo	Daratole	Drought	407	2,442	5	-	-	-	-	-	-	407	2,442	5
	Somali	Doolo	Gal Hamer	Drought	290	1,740	1	-	-	-	-	-	-	290	1,740	1
	Somali	Doolo	Geladin	Drought	1,194	7,164	5	-	-	-	-	-	-	1,194	7,164	5
	Somali	Doolo	Lahel Yu'ub	Conflict	-	-	-	370	2,220	1	-	-	-	370	2,220	1
	Somali	Doolo	Lahel Yu'ub	Drought	1,505	9,030	3	-	-	-	-	-	-	1,505	9,030	3
	Somali	Doolo	Warder	Drought	11,970	71,970	7	-	-	-	-	-	-	11,970	71,970	7
	Somali	Doolo	Lagahida	Conflict	1,762	10,572	6	-	-	-	-	-	-	1,762	10,572	6
	Somali	Erer	Lagahida	Drought	270	1,620	1	-	-	-	-	-	-	270	1,620	1
	Somali	Erer	Mayamuluqo	Conflict	993	5,958	3	75	450	1	-	-	-	1,068	6,408	4
	Somali	Erer	Salahad	Conflict	1,588	9,528	8	-	-	-	-	-	-	1,588	9,528	8
	Somali	Erer	Qubi	Conflict	1,433	8,598	6	-	-	-	-	-	-	1,433	8,598	6
	Somali	Erer	Qubi	Drought	83	498	1	-	-	-	126	756	1	209	1,254	2
	Somali	Erer	Wangay	Conflict	153	918	2	-	-	-	-	-	-	153	918	2
	Somali	Fafan	Babile	Conflict	19,707	118,242	15	-	-	-	-	-	-	19,707	118,242	15
	Somali	Fafan	Gursum	Conflict	1,275	7,650	6	-	-	-	-	-	-	1,275	7,650	6
	Somali	Fafan	Haresten	Drought	95	570	1	-	-	-	-	-	-	95	570	1
	Somali	Fafan	Kebribeyah	Drought	1,350	8,100	1	-	-	-	-	-	-	1,350	8,100	1
	Somali	Fafan	Tulliged	Conflict	4,285	25,710	4	-	-	-	705	4,230	3	4,990	29,940	7
	Somali	Fafan	Jiliga	Conflict	303	1,698	3	-	-	-	-	-	-	303	1,698	3
	Somali	Fafan	Jiliga City Administration	Conflict	180	1,080	1	-	-	-	-	-	-	180	1,080	1
	Somali	Fafan	Gollano	Drought	-	-	-	-	-	-	369	2,214	2	369	2,214	2
	Somali	Jarar	Aware	Drought	885	5,220	2	-	-	-	-	-	-	885	5,220	2
	Somali	Jarar	Daror	Drought	471	2,826	3	-	-	-	-	-	-	471	2,826	3
	Somali	Jarar	Dig	Drought	269	1,614	1	-	-	-	-	-	-	269	1,614	1
	Somali	Jarar	Gashamo	Drought	2,205	13,230	5	-	-	-	-	-	-	2,205	13,230	5
	Somali	Jarar	Gunagado	Drought	481	2,886	1	-	-	-	-	-	-	481	2,886	1
	Somali	Jarar	Billibur	Drought	220	1,320	1	-	-	-	36	216	1	256	1,536	2
	Somali	Jarar	Degehabur	Conflict	46	276	1	-	-	-	-	-	-	46	276	1
	Somali	Jarar	Degehabur	Drought	245	1,470	1	-	-	-	419	2,514	2	664	3,984	3
	Somali	Jarar	Debeweyn	Drought	409	2,454	2	-	-	-	80	480	1	489	2,934	3
	Somali	Korähe	Debeweyn	Seasonal flood	94	564	2	-	-	-	-	-	-	94	564	2
	Somali	Korähe	El-ogaden	Conflict	-	-	-	63	378	1	-	-	-	63	378	1
	Somali	Korähe	El-ogaden	Drought	260	1,560	2	-	-	-	-	-	-	260	1,560	2
	Somali	Korähe	Goglo	Drought	460	2,760	4	-	-	-	-	-	-	460	2,760	4
	Somali	Korähe	Kebridehar	Drought	688	4,128	6	-	-	-	280	1,680	1	968	5,808	7
	Somali	Korähe	Kebridehar	Flash flood	516	3,096	1	-	-	-	-	-	-	516	3,096	1
	Somali	Korähe	Marsin	Drought	548	3,288	3	-	-	-	-	-	-	548	3,288	3
	Somali	Korähe	Shilabo	Conflict	155	930	1	-	-	-	-	-	-	155	930	1
	Somali	Korähe	Shilabo	Drought	388	2,328	3	-	-	-	-	-	-	388	2,328	3
	Somali	Korähe	Higolay	Drought	90	540	1	-	-	-	-	-	-	90	540	1
	Somali	Korähe	Laasdankayre	Drought	96	576	1	-	-	-	350	2,100	1	446	2,676	2
	Somali	Korähe	Shekosh	Conflict	-	-	-	-	-	-	200	1,200	1	200	1,200	1
	Somali	Liben	Deka Seftu	Conflict	6,827	40,962	36	693	4,158	9	-	-	-	7,520	45,120	45
	Somali	Liben	Dolo Odo	Conflict	450	2,700	1	-	-	-	-	-	-	450	2,700	1
	Somali	Liben	Dolo Odo	Drought	615	3,690	2	-	-	-	-	-	-	615	3,690	2
	Somali	Liben	Dolo Odo	Flash flood	276	1,656	1	-	-	-	-	-	-	276	1,656	1

Round	Region	Zone	Woreda	Cause	Before 2021			During 2021			In 2022			Total HH	Total Individuals	Total Sites
					HH	Individuals	Sites	HH	Individuals	Sites	HH	Individuals	Sites			
Site Assessment Round 29 (1 March - 18 April 2022)	Somali	Liben	Filtu	Conflict	6,913	41,536	27	-	-	-	-	-	-	6,913	41,536	27
	Somali	Liben	Filtu	Drought	87	522	1	55	330	1	-	-	-	142	852	2
	Somali	Liben	Filtu	Seasonal flood	150	900	2	-	-	-	-	-	-	150	900	2
	Somali	Liben	Karsa Dulla	Conflict	4,043	24,258	11	233	1,398	2	90	540	2	4,366	26,196	15
	Somali	Liben	Karsa Dulla	Drought	-	-	-	-	-	-	240	1,440	1	-	1,440	1
	Somali	Liben	Goro Baqaqsa	Conflict	416	2,496	1	823	4,938	1	-	-	-	1,239	7,434	2
	Somali	Liben	Goro Baqaqsa	Drought	-	-	-	775	4,650	2	979	5,874	3	1,754	10,524	5
	Somali	Liben	Guradamole	Conflict	3,383	20,298	5	430	2,580	2	-	-	-	3,813	22,878	7
	Somali	Liben	Guradamole	Drought	-	-	-	216	1,296	1	750	4,500	2	966	5,796	3
	Somali	Liben	Boqormaayo	Drought	-	-	-	-	-	-	280	1,680	4	280	1,680	4
	Somali	Liben	Boqormaayo	Flash flood	2,178	13,068	1	-	-	-	-	-	-	2,178	13,068	1
	Somali	Nogob	Dhunu	Drought	1,019	6,114	6	-	-	-	-	-	-	1,019	6,114	6
	Somali	Nogob	Elwayne	Drought	710	4,260	7	-	-	-	-	-	-	710	4,260	7
	Somali	Nogob	Gerbo	Conflict	32	192	1	-	-	-	-	-	-	32	192	1
	Somali	Nogob	Gerbo	Drought	1,863	11,178	11	-	-	-	-	-	-	1,863	11,178	11
	Somali	Nogob	Segeg	Conflict	45	270	1	-	-	-	-	-	-	45	270	1
	Somali	Nogob	Segeg	Drought	756	4,536	4	-	-	-	-	-	-	756	4,536	4
	Somali	Nogob	Avun	Conflict	50	300	1	-	-	-	-	-	-	50	300	1
	Somali	Nogob	Avun	Drought	-	-	-	-	-	-	300	1,800	4	300	1,800	4
	Somali	Nogob	Hararey	Drought	-	-	-	-	-	-	525	3,150	5	525	3,150	5
	Somali	Nogob	Horashagah	Drought	-	-	-	-	-	-	847	5,082	7	847	5,082	7
	Somali	Shabelle	Abaqaro	Drought	215	1,290	1	-	-	-	-	-	-	215	1,290	1
	Somali	Shabelle	Adadle	Drought	2,927	17,562	10	-	-	-	2,972	17,832	11	5,899	35,394	21
	Somali	Shabelle	Adadle	Seasonal flood	707	4,242	4	-	-	-	-	-	-	707	4,242	4
	Somali	Shabelle	Berano	Drought	245	1,470	2	-	-	-	-	-	-	245	1,470	2
	Somali	Shabelle	Denan	Drought	1,157	6,942	5	-	-	-	1,149	6,894	4	2,306	13,836	9
	Somali	Shabelle	East Imi	Conflict	189	1,134	3	-	-	-	-	-	-	189	1,134	3
	Somali	Shabelle	East Imi	Drought	712	4,272	3	-	-	-	945	5,670	4	1,657	9,942	7
	Somali	Shabelle	Etele	Drought	256	1,536	1	-	-	-	-	-	-	256	1,536	1
	Somali	Shabelle	Gode	Drought	423	2,538	3	-	-	-	1,358	8,148	8	1,781	10,686	11
	Somali	Shabelle	Gode	Seasonal flood	370	2,220	3	-	-	-	-	-	-	370	2,220	3
	Somali	Shabelle	Kelafo	Drought	406	2,436	2	-	-	-	773	4,638	3	1,179	7,074	5
	Somali	Shabelle	Kelafo	Seasonal flood	400	2,400	1	-	-	-	-	-	-	400	2,400	1
	Somali	Shabelle	Mustahil	Flash flood	2,000	12,000	1	-	-	-	-	-	-	2,000	12,000	1
	Somali	Shabelle	Mustahil	Seasonal flood	5,060	30,360	2	-	-	-	-	-	-	5,060	30,360	2
	Somali	Siti	Atdem	Conflict	230	1,380	1	350	2,100	1	-	-	-	580	3,480	2
	Somali	Siti	Erer	Drought	1,259	7,554	5	-	-	-	-	-	-	1,259	7,554	5
	Somali	Siti	Erer	Conflict	205	1,230	2	1,186	7,116	2	-	-	-	1,391	8,346	4
	Somali	Siti	Gabialu	Drought	2,046	12,276	2	-	-	-	-	-	-	2,046	12,276	2
	Somali	Siti	Gabialu	Conflict	180	1,080	1	-	-	-	-	-	-	180	1,080	1
	Somali	Siti	Gabialu	Drought	2,185	13,110	3	-	-	-	-	-	-	2,185	13,110	3
	Somali	Siti	Gabialu	Flash flood	565	3,390	1	-	-	-	-	-	-	565	3,390	1
	Somali	Siti	Gota-Biki	Conflict	444	2,664	1	250	1,500	1	-	-	-	694	4,164	2
	Somali	Siti	Gota-Biki	Drought	212	1,272	2	-	-	-	-	-	-	212	1,272	2
	Somali	Siti	Hadgalo	Drought	535	3,210	2	-	-	-	-	-	-	535	3,210	2
	Somali	Siti	Hadgalo	Seasonal flood	770	4,620	1	-	-	-	-	-	-	770	4,620	1
	Somali	Siti	Mieso	Conflict	2,275	13,650	5	1,275	7,650	2	-	-	-	3,550	21,300	7
	Somali	Siti	Mieso	Drought	2,027	12,162	7	-	-	-	-	-	-	2,027	12,162	7
	Somali	Siti	Mieso	Flash flood	180	1,080	1	-	-	-	-	-	-	180	1,080	1
	Somali	Siti	Shinile	Drought	550	3,300	1	-	-	-	-	-	-	550	3,300	1
	Somali	Siti	Dembel	Conflict	125	750	1	-	-	-	-	-	-	125	750	1
	Somali Total				141,816	850,702	378	13,410	80,340	44	16,047	96,282	87	171,273	1,027,324	509
	South West Ethiopia Peoples	Bench Sheko	Mizan Aman	Conflict	182	874	4	-	-	-	-	-	-	182	874	4
	South West Ethiopia Peoples	Bench Sheko	Debulu Bench	Conflict	412	1,873	7	90	530	1	-	-	-	502	2,403	8
	South West Ethiopia Peoples	Bench Sheko	Gurafareda	Conflict	206	1,292	1	186	892	1	-	-	-	392	2,184	2
	South West Ethiopia Peoples	Bench Sheko	Shay Bench	Landslide	33	313	1	-	-	-	-	-	-	33	313	1
	South West Ethiopia Peoples	Keffa	Tulo	Landslide	-	-	-	20	126	1	-	-	-	20	126	1
	South West Ethiopia Peoples	Keffa	Decha	Landslide	-	-	-	21	171	1	-	-	-	21	171	1
	South West Ethiopia Peoples	Mirab Ono	Maji	Conflict	-	-	-	120	612	1	-	-	-	120	612	1

Round	Region	Zone	Woreda	Cause	Before 2021			During 2021			In 2022			Total HH	Total Individuals	Total Sites
					HH	Individuals	Sites	HH	Individuals	Sites	HH	Individuals	Sites			
Site Assessment Round 29 (1 March - 18 April 2022)	South West Ethiopia Peoples	Sheka	Anderacha	Conflict	228	1,231	1	-	-	-	-	-	-	228	1,231	1
	South West Ethiopia Peoples	Sheka	Masha	Conflict	416	1,899	1	-	-	-	-	-	-	416	1,899	1
	South West Ethiopia Peoples	Sheka	Yeki	Conflict	1,213	6,783	5	-	-	-	-	-	-	1,213	6,783	5
	South West Ethiopia Peoples Total				2,690	14,265	20	437	2,331	5	-	-	-	3,127	16,596	25
Grand Total					357,316	1,887,105	1,499	104,448	521,683	443	71,125	350,951	216	532,889	2,759,739	2,158



ANNEX B

SUMMARY TABLE OF RETURN

Village Assessment Survey

Village Assessment Survey (VAS) Round 12 - from 10 January 2022 - 9 April 2022 - National Summary Table



Region	Zone	Woreda	# of Assessed Villages	Returning IDPs		Returned Migrants (Individual)	Host/Receiving Community		Other Population		Total HHs	Total Individuals
				Household	Individual		Household	Individual	Household	Individual		
Afar	Awsa (Zone 1)	Aysaita	2	205	1,145	-	-	-	-	-	205	1,145
Afar	Awsa (Zone 1)	Chifra	26	4,071	24,426	-	-	-	-	-	4,071	24,426
Afar	Awsa (Zone 1)	Adaa'r	3	595	3,570	-	-	-	-	-	595	3,570
Afar	Fenti (Zone 4)	Awra	5	1,135	6,607	-	-	-	-	-	1,135	6,607
Afar	Fenti (Zone 4)	Gulina	6	1,535	9,220	-	57	317	-	-	1,592	9,537
Afar	Fenti (Zone 4)	Yalo	7	1,833	10,998	-	-	-	-	-	1,833	10,998
Afar	Fenti (Zone 4)	Ewa	14	1,497	8,832	-	-	-	-	-	1,497	8,832
Afar	Gabi (Zone 3)	Amibara	1	139	834	-	-	-	-	-	139	834
Afar	Gabi (Zone 3)	Awash Fentale	2	230	1,380	-	-	-	-	-	230	1,380
Afar	Gabi (Zone 3)	Gewane	1	160	960	-	-	-	-	-	160	960
Afar	Gabi (Zone 3)	Hannuka	1	60	360	-	-	-	-	-	60	360
Afar	Hari (Zone 5)	Hedeiela	5	984	5,904	-	-	-	-	-	984	5,904
Afar	Hari (Zone 5)	Telalak	4	260	1,280	-	-	-	-	-	260	1,280
Afar Total			77	12,704	75,516	-	57	317	-	-	12,761	75,833
Amhara	North Gondar	Debarik	4	569	2,180	-	-	-	-	-	569	2,180
Amhara	North Gondar	Addi Arekay	8	1,458	6,125	-	-	-	-	-	1,458	6,125
Amhara	North Gondar	Dabat	4	455	1,590	-	-	-	-	-	455	1,590
Amhara	North Shewa (R3)	Shoa Robit City Administration	40	18,079	72,329	-	4,094	15,570	-	-	22,173	87,899
Amhara	North Shewa (R3)	Eferatana Gidem	49	16,754	75,987	25	1,646	5,346	-	-	18,400	81,358
Amhara	North Shewa (R3)	Ataye City Administration	31	10,916	51,408	-	-	-	-	-	10,916	51,408
Amhara	North Shewa (R3)	Kewet	23	5,262	20,188	-	3,955	18,884	-	-	9,217	39,072
Amhara	North Shewa (R3)	Antsokya	13	2,160	10,266	-	2,416	10,254	-	-	4,576	20,520
Amhara	North Shewa (R3)	Menz Gera Midir	33	11,053	48,161	-	555	2,065	-	-	11,608	50,226
Amhara	North Shewa (R3)	Tarema Ber	34	5,538	24,662	-	797	3,498	-	-	6,335	28,160
Amhara	North Shewa (R3)	Menz Keya Gabriel	12	2,172	10,704	-	-	-	-	-	2,172	10,704
Amhara	North Shewa (R3)	Mojan Wedera	38	8,265	37,606	-	786	3,772	-	-	9,051	41,378
Amhara	North Shewa (R3)	Menz Mama Midir	67	13,776	56,445	-	703	2,346	-	-	14,479	58,791
Amhara	North Shewa (R3)	Mehal Meda City Administration	25	7,007	27,583	-	62	130	-	-	7,069	27,713
Amhara	North Wollo	Gidan	19	7,161	29,858	200	377	1,898	-	-	7,538	31,956
Amhara	North Wollo	Guba Lafto	31	8,174	33,310	739	10,920	45,507	-	-	19,094	79,556
Amhara	North Wollo	Raya Kobo	34	17,233	69,793	1,277	4,910	18,590	-	-	22,143	89,660
Amhara	North Wollo	Lasta	11	5,816	21,166	-	2,020	9,420	-	-	7,836	30,586
Amhara	North Wollo	Habru	35	37,605	117,887	2,944	6,491	25,708	-	-	44,096	146,539
Amhara	North Wollo	Lalibela City Administration	10	4,255	14,506	-	3,464	14,504	-	-	7,719	29,010
Amhara	North Wollo	Meket	19	7,060	28,163	-	-	-	-	-	7,060	28,163
Amhara	North Wollo	Wadia	20	11,130	44,520	50	299	618	-	-	11,429	45,188
Amhara	North Wollo	Kobo	16	8,928	35,813	640	14,286	37,743	-	-	23,214	74,196
Amhara	North Wollo	Woldiya City Administration	32	12,382	47,203	1,001	25,935	79,650	-	-	38,317	127,854
Amhara	North Wollo	Mersa City Administration	14	8,655	34,906	821	6,358	31,656	-	-	15,013	62,383
Amhara	North Wollo	Filakit City Administration	4	3,690	13,849	-	1,998	6,560	-	-	5,688	20,409
Amhara	North Wollo	Gazo	1	53	184	55	474	1,884	-	-	527	1,923
Amhara	Oromia	Artuma Fursi	10	1,513	5,707	-	-	-	-	-	1,513	5,707
Amhara	Oromia	Kemissie City Administration	24	1,709	5,127	134	14,222	69,486	-	-	15,931	74,747
Amhara	Oromia	Jille Timuga	12	981	4,625	-	-	-	-	-	981	4,625
Amhara	Oromia	Dewa Cheffa	26	12,497	37,491	127	1,608	10,473	-	-	14,105	48,091
Amhara	South Gondar	Lay Gayint	34	9,698	35,731	-	-	-	-	-	9,698	39,731
Amhara	South Gondar	Farta	19	3,009	12,152	-	-	-	-	-	3,009	12,152
Amhara	South Gondar	Guna Begemidir	19	5,852	28,036	-	-	-	-	-	5,852	28,036
Amhara	South Gondar	Nefas Mewicha city Administration	12	7,252	27,215	-	-	-	-	-	7,252	27,215
Amhara	South Gondar	Debre Tabor City Administration	1	210	788	-	369	1,822	-	-	579	2,610

Region	Zone	Woreda	# of Assessed Villages	Returning ID's		Returned Migrants (Individual)	Host/Receiving Community		Other Population		Total HHs	Total Individuals
				Household	Individual		Household	Individual	Household	Individual		
Amhara	South Wollo	Kalu	30	8,523	37,353	-	8,330	37,650	-	-	16,853	75,003
Amhara	South Wollo	Albuko	18	2,568	11,709	-	-	-	-	-	2,568	11,709
Amhara	South Wollo	Tenta	28	8,417	34,483	-	2,004	9,237	-	-	10,421	43,720
Amhara	South Wollo	Were Ilu	26	7,925	33,160	-	4,990	22,758	-	-	12,915	55,918
Amhara	South Wollo	Legambo	39	8,507	34,551	528	2,545	11,861	-	-	11,052	46,940
Amhara	South Wollo	Jama	14	6,192	24,022	-	3,055	13,619	-	-	9,247	37,641
Amhara	South Wollo	Were Ilu city Administration	4	656	3,175	-	200	902	-	-	856	4,077
Amhara	South Wollo	Thehulederie	40	4,988	21,551	-	3,122	16,003	-	-	8,110	37,554
Amhara	South Wollo	Worebahu	22	2,917	13,874	-	791	3,595	-	-	3,708	17,469
Amhara	South Wollo	Dessie Zuria	17	5,854	18,151	-	1,752	9,902	-	-	7,606	28,053
Amhara	South Wollo	Hayeq City Administration	5	512	2,480	-	1,888	8,899	-	-	2,400	11,379
Amhara	South Wollo	Kutaber	21	7,627	30,686	-	4,390	20,476	-	-	12,017	51,162
Amhara	South Wollo	Keliela	27	5,182	16,529	2,976	771	3,569	-	-	5,953	23,074
Amhara	South Wollo	Anbasel	6	3,118	8,969	-	3,663	16,420	-	-	6,781	25,389
Amhara	Wag Himra	Dehana	11	2,881	10,327	-	1,348	6,937	-	-	4,229	17,264
Amhara	Wag Himra	Sekota	1	150	750	-	-	750	-	-	150	750
Amhara	Wag Himra	Sekota City Administration	7	1,359	5,823	-	850	3,200	-	-	2,209	9,023
Amhara	Wag Himra	Gaz Glibla	4	220	1,100	-	-	-	-	-	220	1,100
Amhara Total			1,104	355,923	1,405,957	11,517	148,444	602,212	-	-	504,367	2,019,686
Beneshangul Gumuz												
Beneshangul Gumuz Total			8	721	4,352	-	-	-	-	-	721	4,352
Gambella	Agnuak	Jore	1	1,378	6,892	-	-	-	-	-	1,378	6,892
Gambella	Agnuak	Gambella Zuria	7	427	2,134	-	1,306	6,798	-	-	1,733	8,932
Gambella	Agnuak	Gog	1	21	102	-	145	727	-	-	166	829
Gambella	Agnuak	Aboobo	2	115	575	-	165	783	-	-	280	1,358
Gambella	Itang Special Wored Itang	354	7	552	2,759	-	354	1,770	-	-	906	4,529
Gambella	Nuer	Makuey	3	763	3,815	-	-	-	-	-	763	3,815
Gambella	Nuer	Jikawo	2	904	5,158	-	24	125	-	-	928	5,283
Gambella Total			23	4,160	21,435	-	1,994	10,203	-	-	6,154	31,638
Oromia	Arsi	Merti	3	191	1,001	-	3,819	18,499	-	-	4,010	19,500
Oromia	East Wallaga	Guto Gida	2	537	3,489	-	-	-	-	-	537	3,489
Oromia	East Wallaga	Saigga	2	525	3,161	-	-	-	-	-	525	3,161
Oromia	West Harerge	Mieso	1	97	485	-	-	-	-	-	97	485
Oromia Total			8	1,350	8,136	-	3,819	18,499	-	-	5,169	26,635
Sidama	Hawassa Ketema As Tulla Sub-City		10	1,370	5,339	-	1,037	5,194	-	-	2,407	10,533
Sidama	Zone 1	Wondo Genet	4	1,066	4,268	-	-	-	-	-	1,066	4,268
Sidama Total			14	2,436	9,607	-	1,037	5,194	-	-	3,473	14,801
SNNP	Alle Especial Wored Alle Especial Woreda		8	825	4,300	140	133	802	-	-	958	5,242
SNNP	Amaro Special Wored Amaro Special Woreda		4	1,526	9,568	-	-	-	-	-	1,526	9,568
SNNP	Derashe Especial W Derashe Especial Woreda		2	3,177	22,139	-	-	-	-	-	3,177	22,139
SNNP	Gamo	Mirab Abaya	3	141	840	-	-	-	-	-	141	840
SNNP	Gamo	Gachho Baba	1	20	131	-	-	-	-	-	20	131
SNNP	Gofa	Geze Gofa	2	52	338	-	-	-	-	-	52	338
SNNP	Gurage	Mareko	13	843	4,768	-	3,453	21,166	-	-	4,296	25,934
SNNP	Gurage	Misrak Meskan	6	260	1,412	-	2,347	13,587	-	-	2,607	14,999
SNNP	Gurage	Cheha	1	21	125	-	120	650	-	-	141	775
SNNP	Hadiya	Misrak Badawacho	1	46	322	-	95	655	-	-	141	977
SNNP	Konso	Segen Zuria	25	6,329	38,992	-	876	5,536	-	-	7,205	44,528
SNNP	Konso	Karat Zuria	13	3,166	19,070	-	-	-	-	-	3,166	19,070

Region	Zone	Woreda	# of Assessed Villages	Returning IDPs		Returned Migrants (Individual)	Host/Receiving Community		Other Population		Total HHs	Total Individuals
				Household	Individual		Household	Individual	Household	Individual		
SNNP	Konso	Kolme Cluster	2	246	2,468	-	-	-	-	-	246	2,468
SNNP	Silti	Alicho Worro	1	68	612	-	-	-	-	-	318	2,862
SNNP Total			82	16,720	105,085	140	7,274	2,250	44,646	23,994	149,871	
Somali	Liben	Deka Seftu	3	213	1,278	-	-	-	-	-	213	1,278
Somali Total			3	213	1,278	-	-	-	-	213	1,278	
South West Ethiopia Peoples	Bench Sheko	Debub Bench	9	1,863	8,748	-	821	3,787	-	-	2,684	12,535
South West Ethiopia Peoples	Bench Sheko	Shay Bench	2	342	2,130	-	-	-	-	-	342	2,130
South West Ethiopia Peoples	Bench Sheko	Gurafereda	72	3,130	17,974	-	-	-	-	-	3,130	17,974
South West Ethiopia Peoples	Keffa	Decha	1	188	1,128	-	-	-	-	-	188	1,128
South West Ethiopia Peoples Total			84	5,523	29,980	-	821	3,787	-	-	6,344	33,767
Grand Total			1,403	399,750	1,661,346	11,657	163,446	684,858	-	-	563,196	2,357,861





dtmethiopia@iom.int



displacement.iom.int/ethiopia



IOM
UN MIGRATION

ETHIOPIA