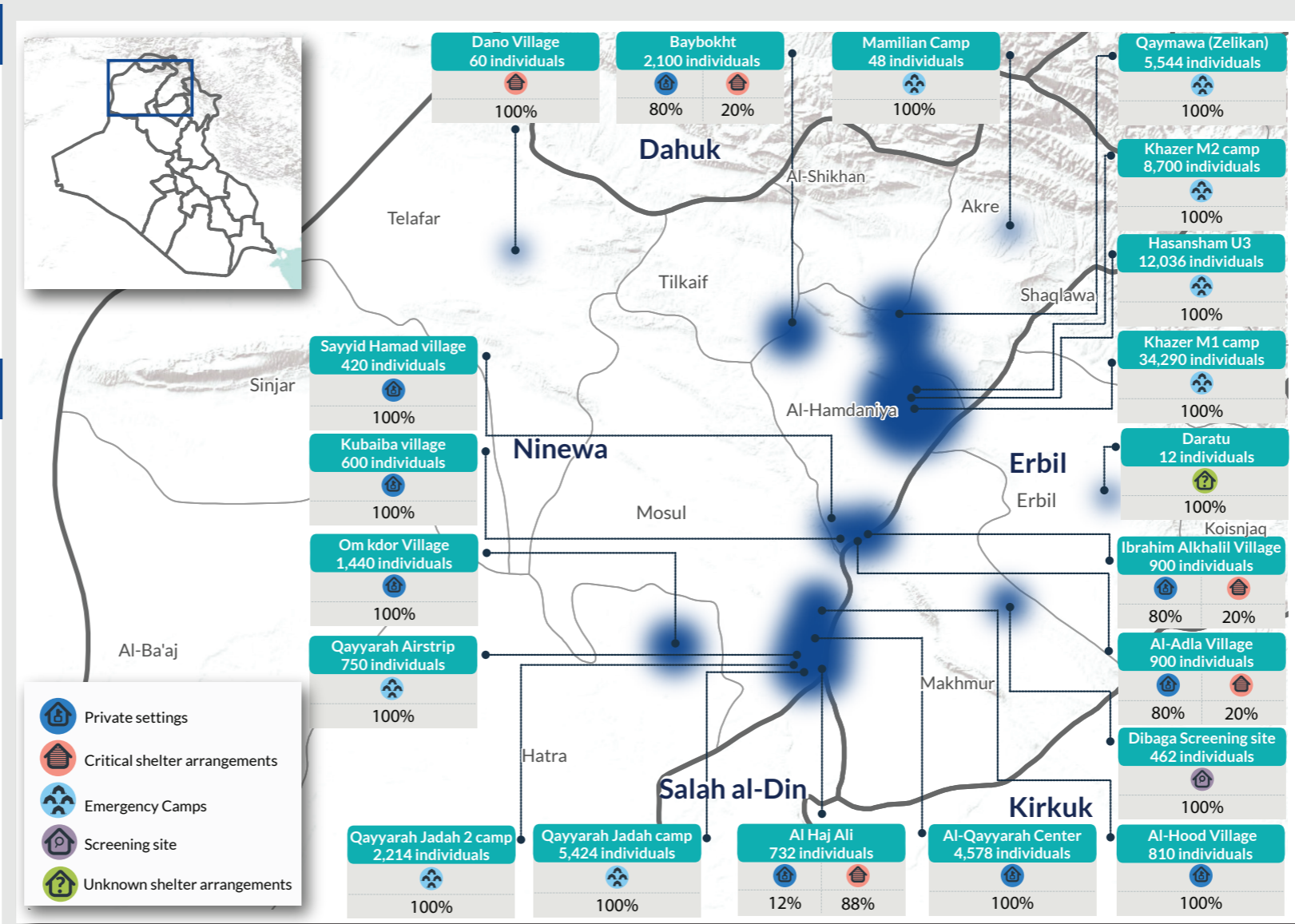
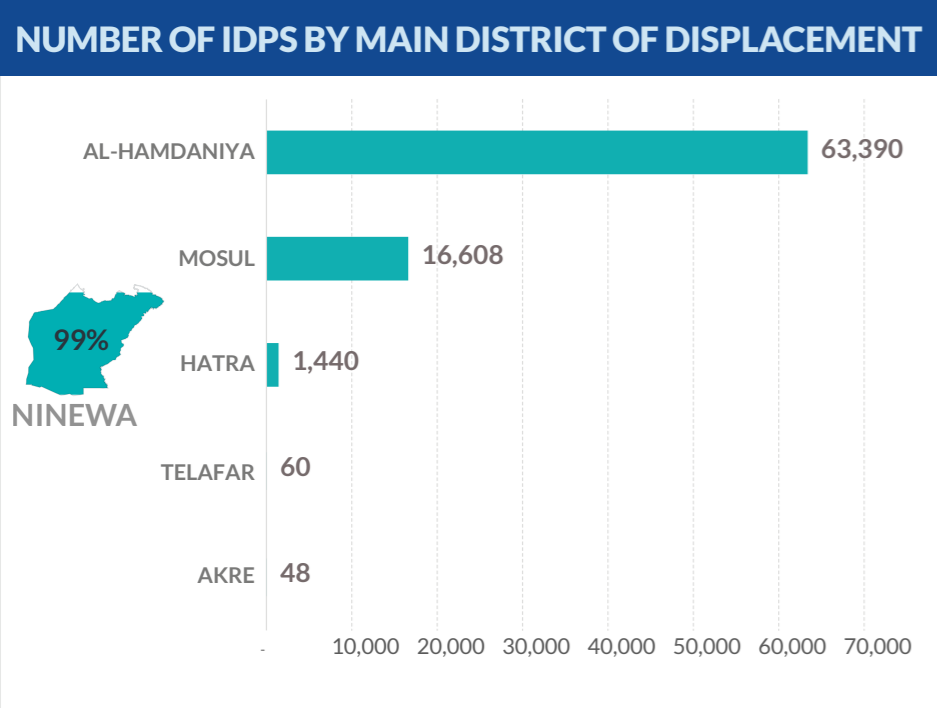
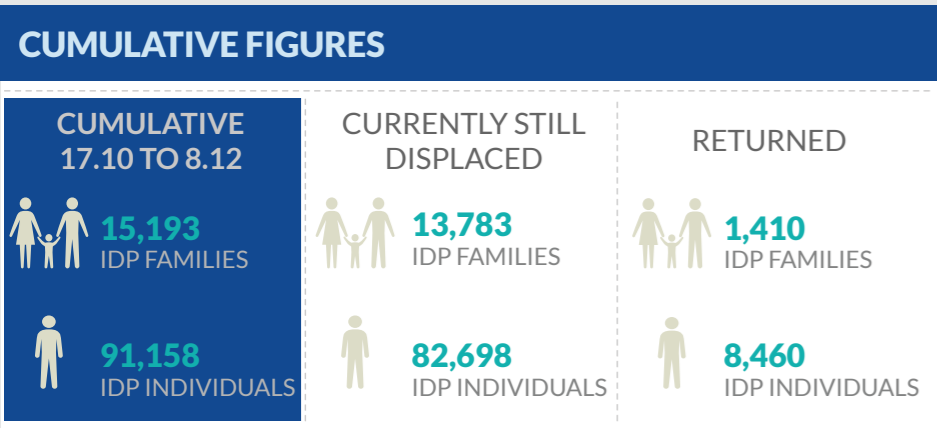


DISPLACEMENT TRACKING MATRIX EMERGENCY TRACKING

FACTSHEET 6# - MOSUL OPERATIONS FROM 17 OCTOBER TO 8 DECEMBER

The Emergency Tracking (ET) system is a crisis-based tool that aims at tracking sudden displacement or return movements triggered by specific crises. The ET figures reported on this portal are not cumulative of the all persons affected by the Mosul crisis thus far, rather the

ET update provides only a snapshot of the current displacement situation for the indicated date. The data and information reported on this page are related solely to the displacement caused by the Mosul operations which started on 17 October 2016.



- On 8 December, 13,783 IDP families (82,968 individuals) are still displaced, that is, 6% more than on 1 December.
- Between the updates of 1 and 8 December, a net increase of 942 new IDP families (5,652 individuals) has been recorded.
- New displacements have been recorded in Ninewa governorate during the past week. The locations that recorded the largest increase are Khazer M2 camp in Hamdaniya district (erroneously referred to as Hasansham U2 in last DTM Factsheet) whose IDP population recorded an increase of 900 families (5400 individuals). Qayyarah Jad'ah 2 camp, an extension of Qayyarah Jad'ah camp in Qayyarah sub-district, reported the arrival of 369 IDP families (2,214 individuals), while the newly opened Qayyarah Airstrip emergency site reported the arrival of 125 IDP families (750 individuals) most recently.
- Significant decreases have been reported in locations such as Red Valley Village in Tilkaif district (365 IDP families less, i.e. 2,190 individuals). However, rather than this indicating an actual decrease in IDPs, this decrease in figures results from data verification of the original estimates and validating their location of displacement. IDP families were initially displaced to Red Valley village, but later moved to Baybokht area, in Baashiqa sub-district.
- As of 8 December, the governorate hosting the largest number of IDPs displaced as a result of Mosul operations is Ninewa, with 99% of them, i.e. 81,546 individuals.
- The districts that recorded the highest increase in IDP population last week are Hamdaniya, with an increase of 9% (5,448 individuals) because of new arrivals to the camps in the area, particularly Khazer M2, and Mosul district (16% or 2,382 individuals) because of the new arrivals to Qayyarah Jad'ah 2 camp and Qayyarah Airstrip emergency site.
- Between 1 and 8 December, the population in camps grew by 13% (7,830 individuals).

