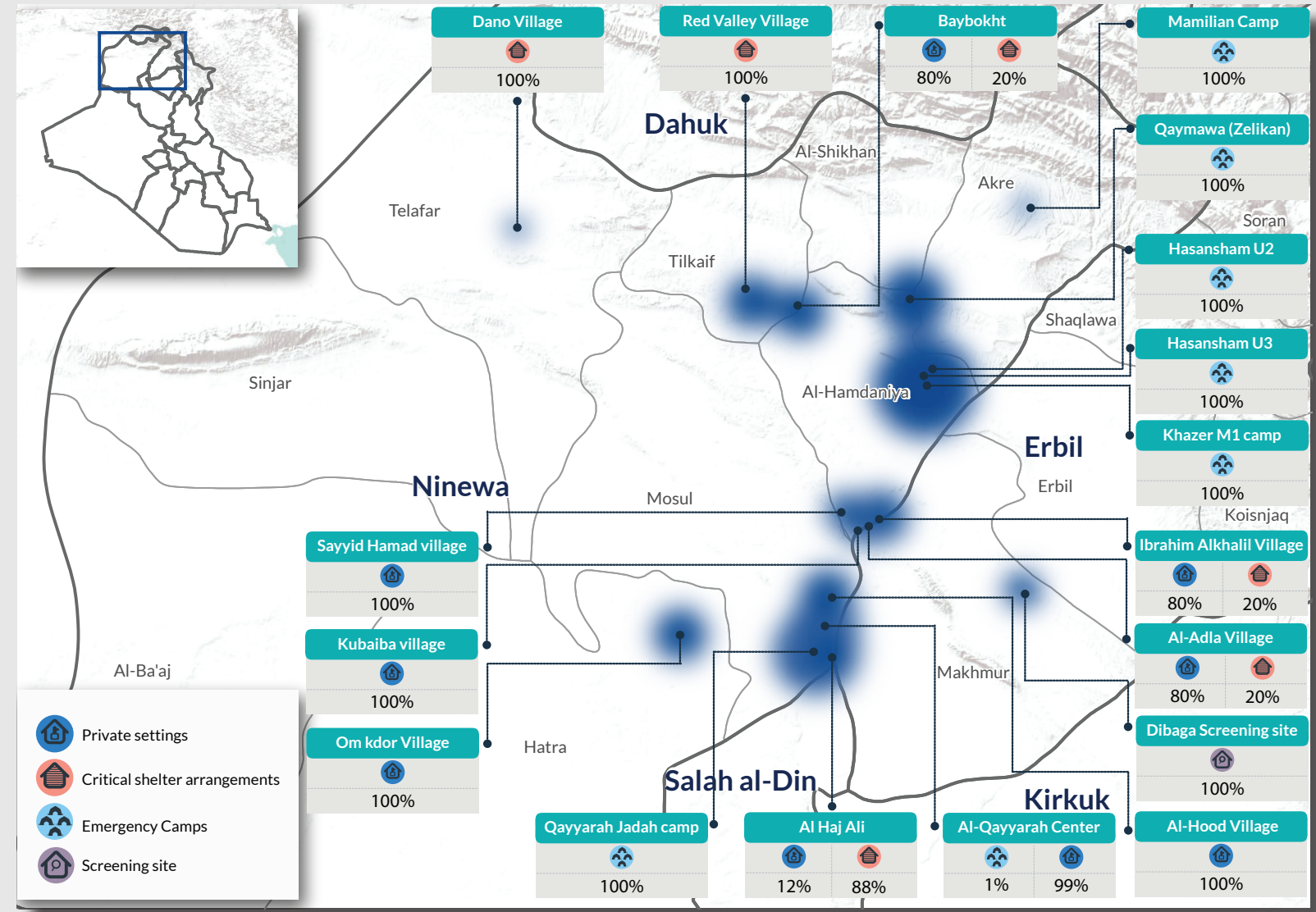
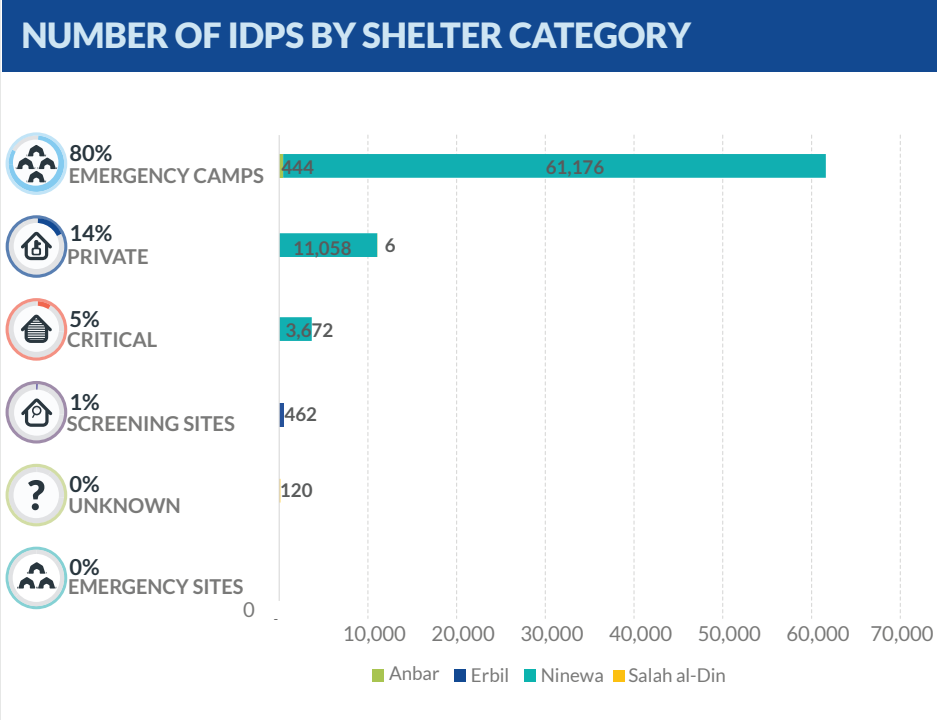
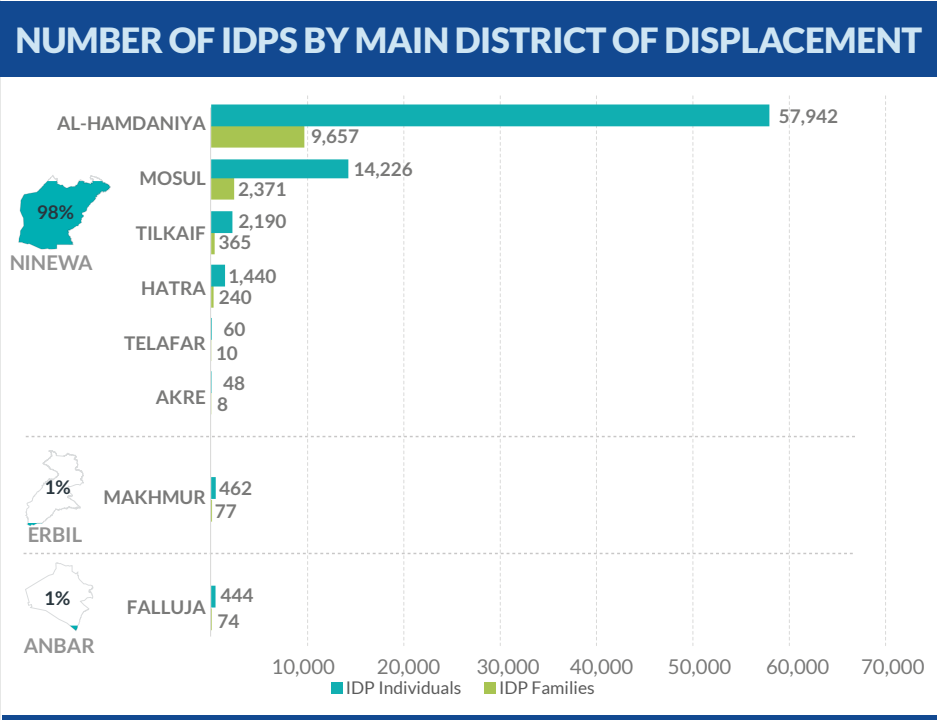
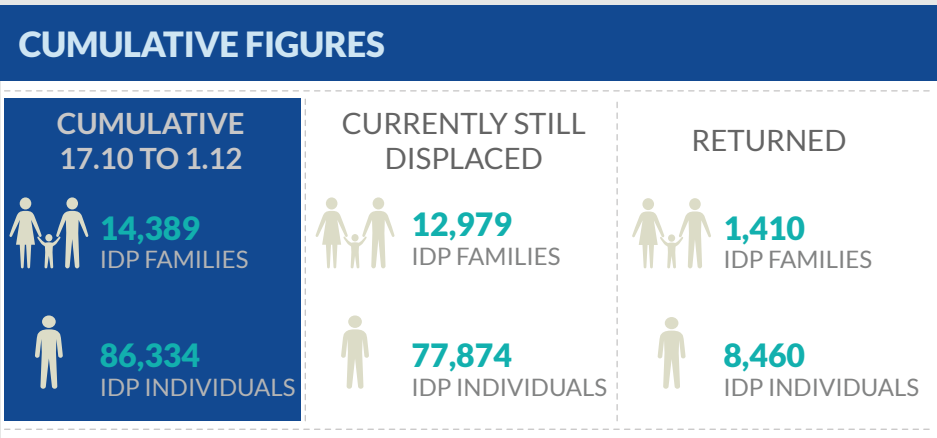


DISPLACEMENT TRACKING MATRIX EMERGENCY TRACKING

FACTSHEET 5# - MOSUL OPERATIONS FROM 17 OCTOBER TO 1 DECEMBER

The Emergency Tracking (ET) system is a crisis-based tool that aims at tracking sudden displacement or return movements triggered by specific crises. The ET figures reported on this portal are not cumulative of the all persons affected by the Mosul crisis thus far, rather the

ET update provides only a snapshot of the current displacement situation for the indicated date. The data and information reported on this page are related solely to the displacement caused by the Mosul operations which started on 17 October 2016.



- Military operations started on 17 October. Displacement movements have been recorded since 18 October.
- Between 24 November and 1 December, 1,709 new IDP families (10,254 individuals) have been displaced.
- During the same period, return movements have been recorded as well, with 224 IDP families (1,344) returning particularly from Al-Shura sub-district to Al-Namroud sub-district, in Ninewa governorate. The total number of returnee families is now 1,410 (8,460 individuals).
- Taking into account both new displacements and return movements, on 1 December, 12,979 IDP families (77,874 individuals) are still displaced, that is, 13% more (8,910 individuals) than on 24 November.
- Please note that the number of the IDPs who are still displaced on 1 December (12,979 IDP families) is slightly higher than the figures reported on the Mosul Portal update of 1 December (12,841). The discrepancy of 138 families is due to the movement of IDP families from one location of displacement to another. The current location of displacement is still being verified and has not been confirmed yet, hence it is not included in the portal.
- As of 1 December, the governorate hosting the largest number of IDPs displaced as a result of Mosul operations is Ninewa, with 99% of them, i.e.75,906 individuals.
- The district that recorded the highest increase in IDP population last week is Hamdaniya, with an increase of 14% (7,302 individuals) because of new arrivals to the camps in the area, particularly Hasansham U2.
- Approximately 80% of the currently displaced IDPs (61,650 individuals) are hosted in camps, with a high concentration in Ninewa, particularly in Hamdaniya district.
- Between 24 November and 1 December, the population in camps grew by 16% (8,544 individuals).

