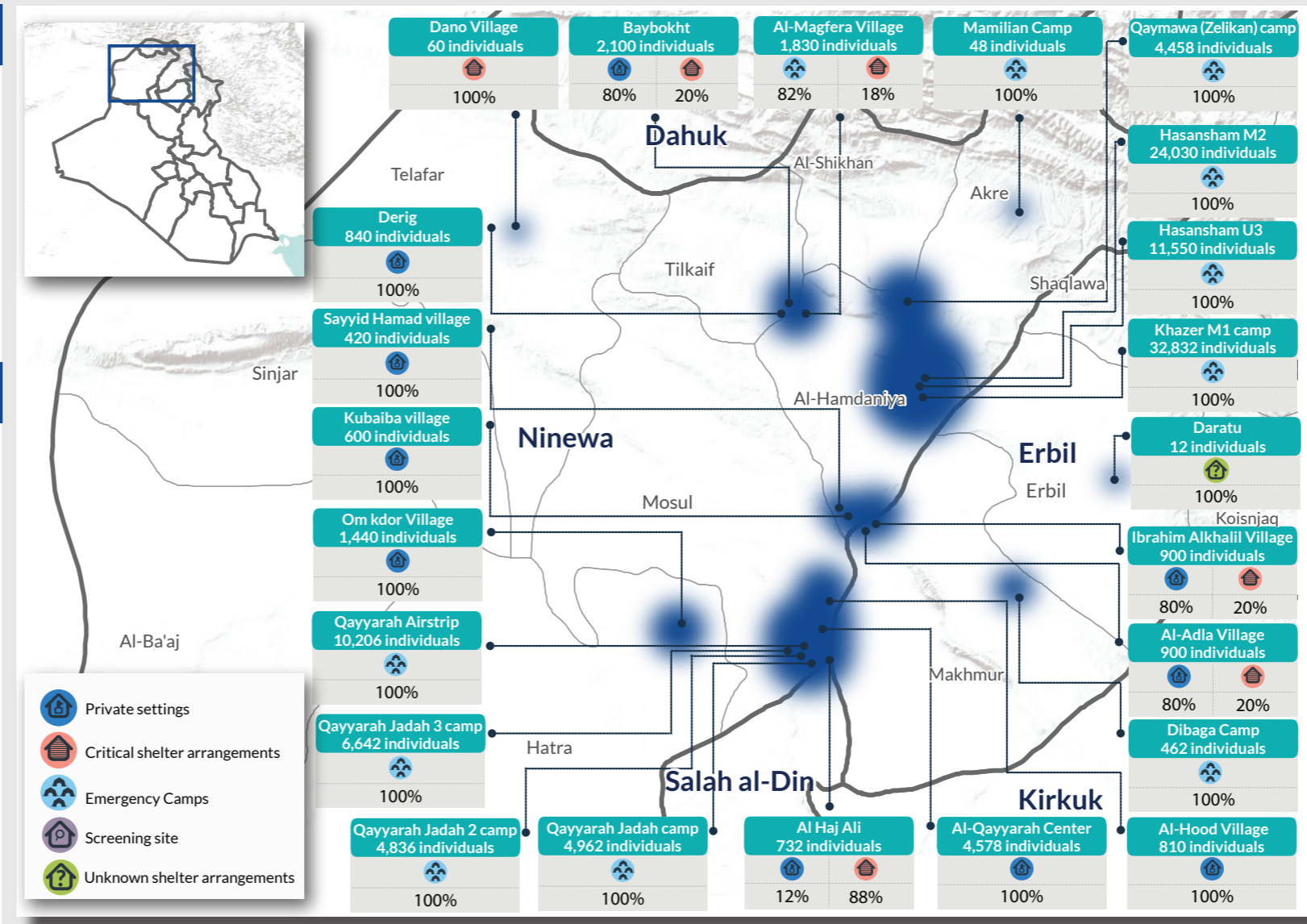
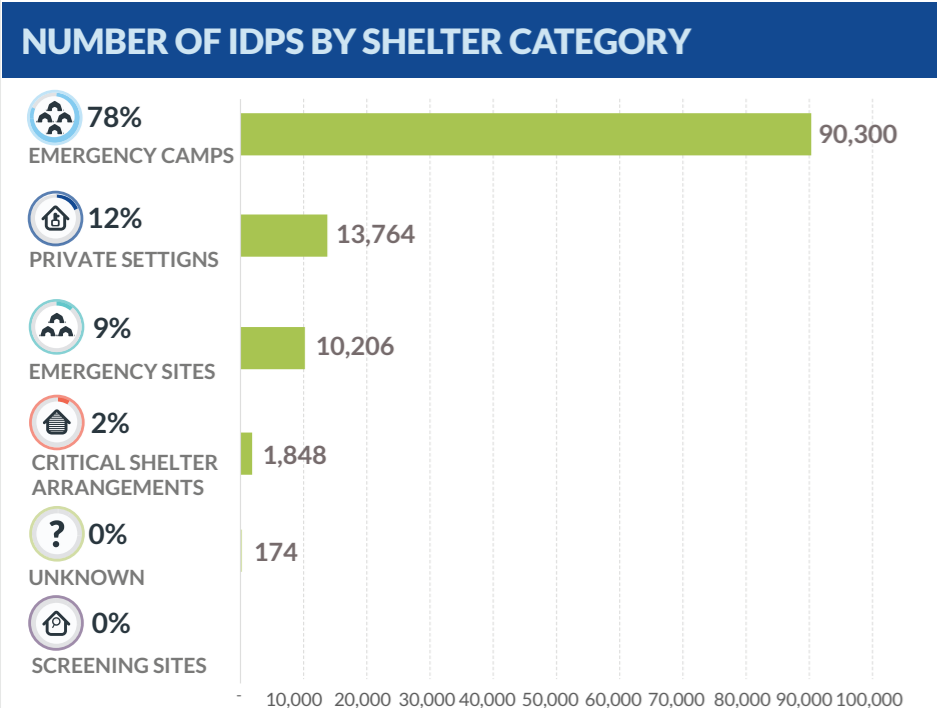
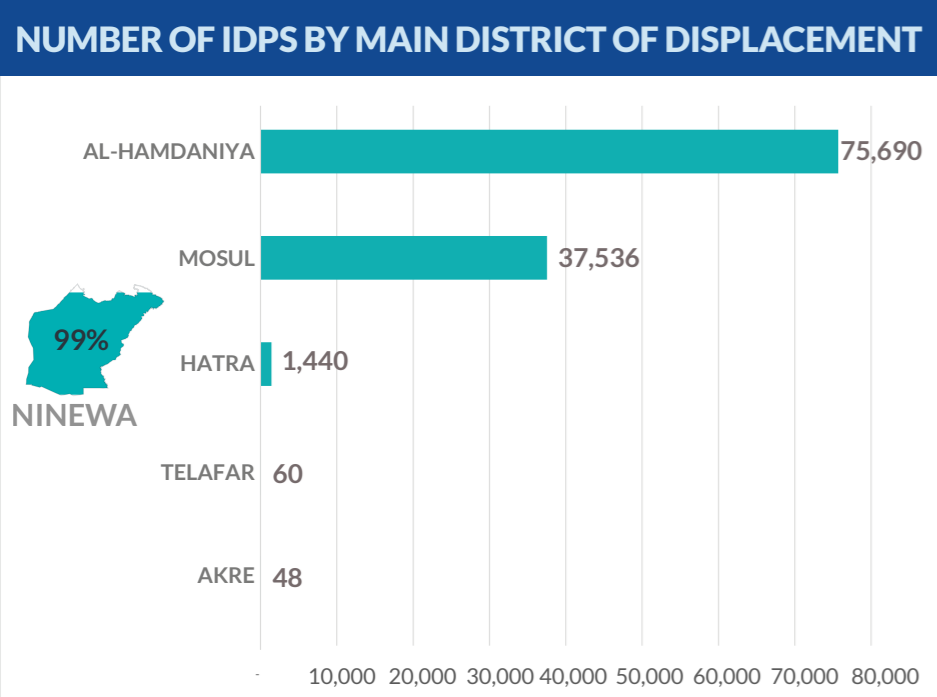
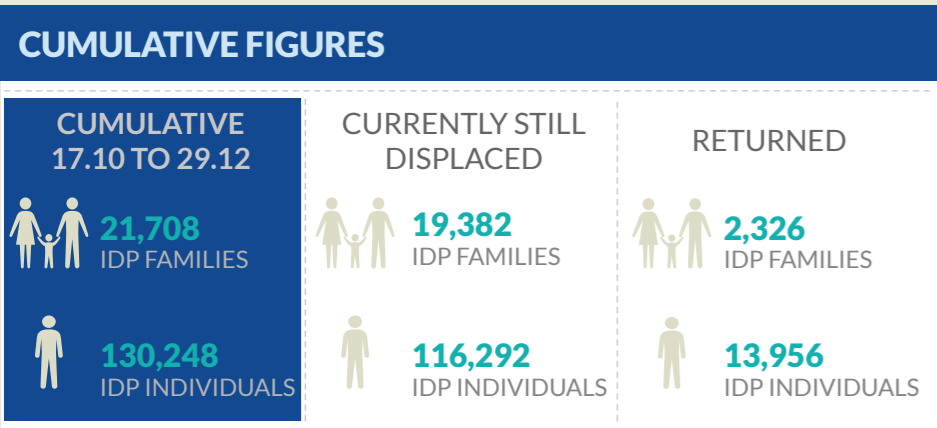


# DISPLACEMENT TRACKING MATRIX EMERGENCY TRACKING

FACTSHEET 9# - MOSUL OPERATIONS FROM 17 OCTOBER TO 29 DECEMBER

The Emergency Tracking (ET) system is a crisis-based tool that aims at tracking sudden displacement or return movements triggered by specific crises. The ET figures reported on this portal are not cumulative of the all persons affected by the Mosul crisis thus far, rather the

ET update provides only a snapshot of the current displacement situation for the indicated date. The data and information reported on this page are related solely to the displacement caused by the Mosul operations which started on 17 October 2016.



- Military operations started on 17 October. Displacement movements have been recorded since 18 October.
- On 29 December, 19,382 IDP families (116,292 individuals) were still displaced, that is, 7% more than on 22 December. Between the updates of 22 and 29 December, an increase of 1,278 new IDP families (7,668 individuals) has been recorded.
- New displacements have been recorded in Ninewa governorate last week. The sub-district that recorded the largest increase is Qayyarah (Mosul district): Qayyarah Jad'ah 3 camp, a newly opened extension of Qayyarah Jad'ah camp, recorded an increase of 489 families (2,934 individuals), that is, 79% more than on 22 December.
- As of 29 December, the governorate hosting the largest number of IDPs displaced as a result of Mosul operations is Ninewa, with 99% of them, that is, 114,726 individuals.
- The district that recorded the highest increase in IDP population last week is Markaz Al Hamdaniya district (42% or 7,110 individuals), because of the new arrivals to Hasansham M2 camp (former Khazer M2).
- Approximately 86% of the currently displaced IDPs (100,506 individuals) are hosted in camps or emergency sites, with a high concentration in Ninewa.
- Between 22 and 29 December, the overall population in camps and emergency sites grew by 8% (7,404 individuals).

