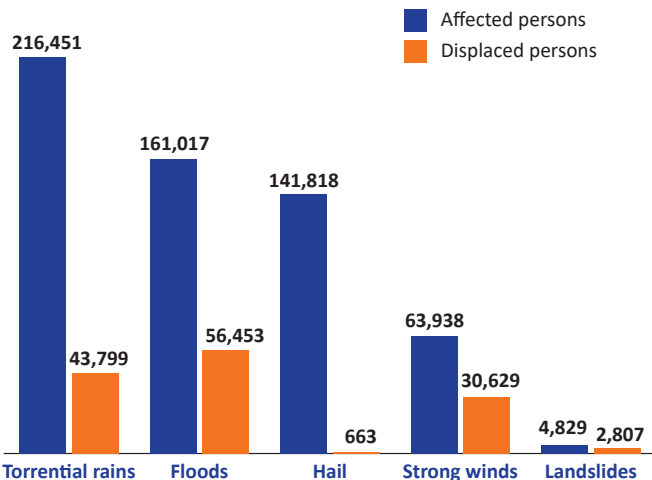


668 Disasters

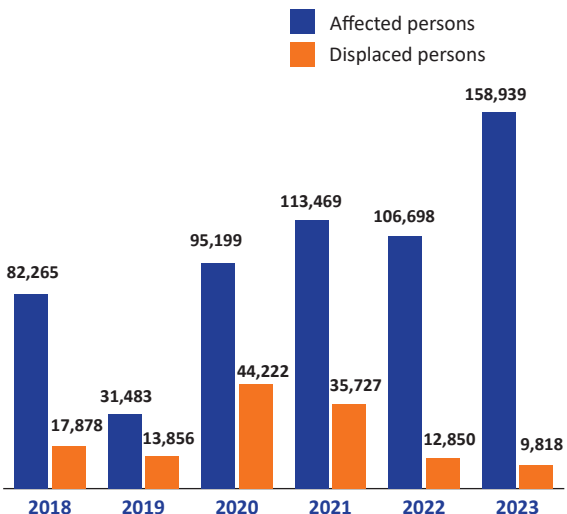
were tracked by DTM emergency tracking teams

Affected and displaced persons
by main types of disasters

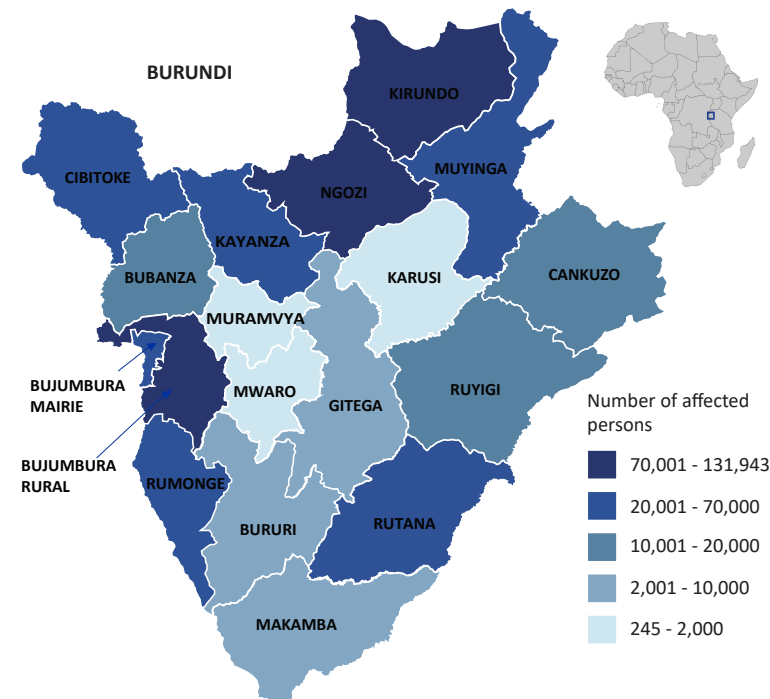


588,053 affected persons 134,351 displaced persons*

Affected and Displaced persons by period

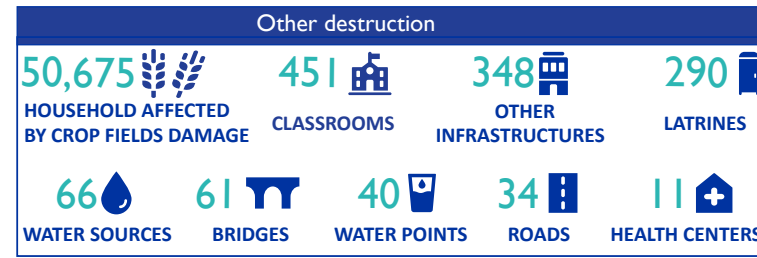
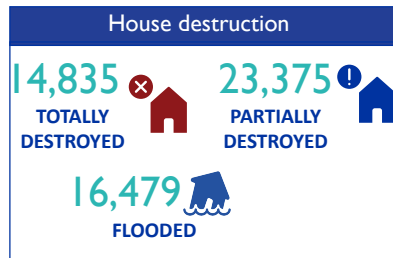
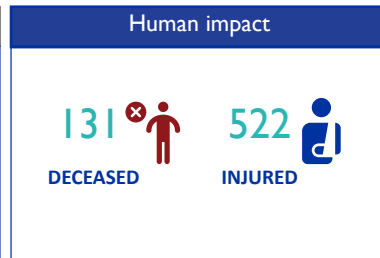
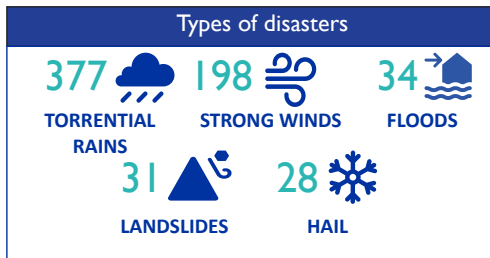


Disasters Affected Population by province



© IOM Burundi - Reference map (May 2023)

Since 2018, climate change and disasters, in particular torrential rains, floods and strong winds that occurred in Burundi affected 588,053 persons, including 134,351 individuals that have been displaced. During this period, the main affected provinces were Bujumbura Rural (131,943 affected persons), Ngozi (111,196 affected persons) and Kirundo (98,556 affected persons). Alongside the severe human impact, these disasters destroyed many houses, infrastructures and crop fields in the country.



METHODOLOGY

The Emergency Event Tracking (EET) tool aims to collect information on large and sudden population movements. Information is collected by enumerators (Red Cross volunteers) through Key Informant Interviews (KII) and direct observation. Two enumerators per commune are in charge of emergency surveillance and report any emergency events that occurred within 24 hours to the supervisor. After verification, the emergency events are shared with partners through the Whatsapp group (to inform partners on time for any emergency assistance). Every monday, a weekly dashboard is compiled and published regarding the emergency events which took place from Sunday to Saturday of the previous week (only severe events are published). These dashboards may be found at <https://dtm.iom.int/burundi>. This overview provides information on climate change and disasters which occurred from January 2018 to May 2023.

*This figure is an accumulation of the number of spontaneous displacements after each emergency event since 2018. The current number of internally displaced persons in Burundi was estimated at 76,987 in May 2023. <https://dtm.iom.int/reports/burundi-internal-displacement-dashboard-may-2023?close=true>