

EMERGENCY EVENT TRACKING

Data collection: 21 March 2023

Fire



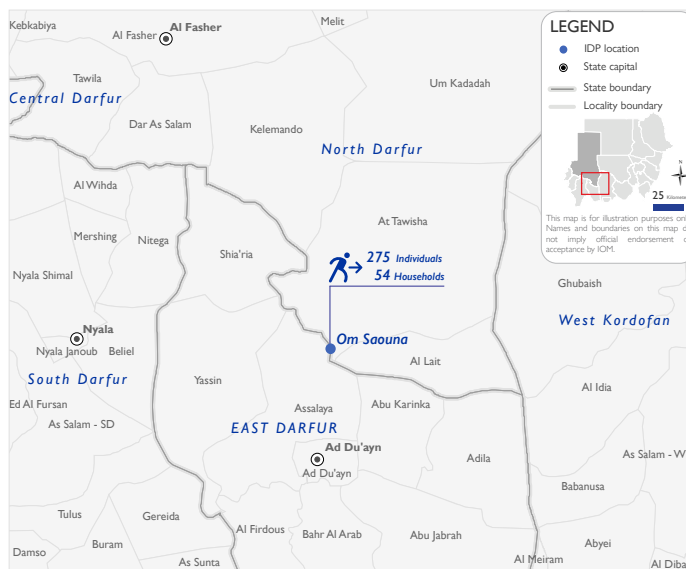
As a subcomponent of the Mobility Tracking methodology (Round Five), the Emergency Event Tracking (EET) tool is deployed to track sudden displacement, provide more frequent updates on the scale of displacement, and quantify the affected population when needed.

Event Overview

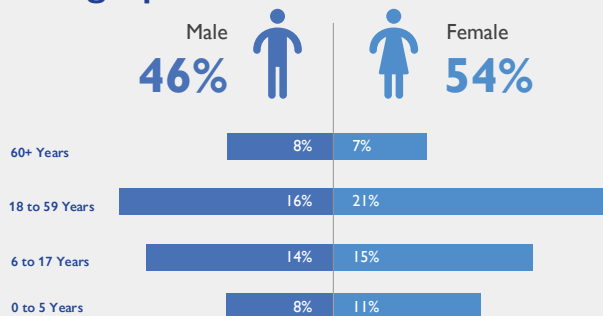


On 18 March 2023, a fire incident was reported in Um Saouna village of At Tawisha locality, North Darfur. Reportedly, 54 houses were completely burnt down due to the fire. The first EET update estimates a total number of 275 individuals (54 households) are currently seeking shelter with relatives or neighbours in Um Saouna village of At Tawisha, North Darfur.

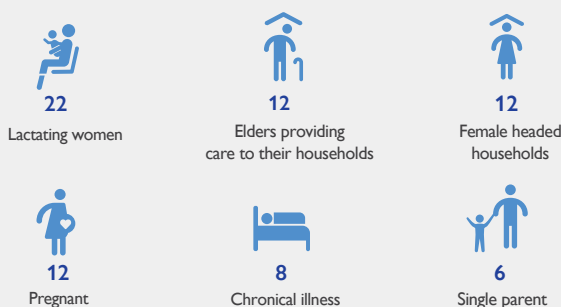
Field teams indicate that there were no deaths or injuries as a result of the fire. All personal belongings of affected households were destroyed during the incident. Field teams estimate that the entire IDP caseload are Sudanese nationals (100%). At least 72 cases of additional vulnerabilities in need of assistance and support were identified by key informants through DTM's Protection indicator. Additionally, DTM Sudan estimates that there are approximately 41 persons with disabilities among the IDP caseload.* Based on a ranking scale, the three priority needs across the caseload are Food, Non-food Items, and Nutrition.



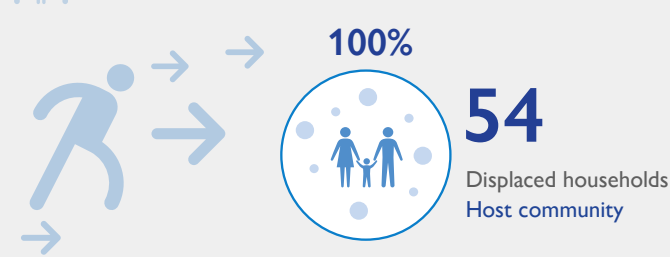
Demographics



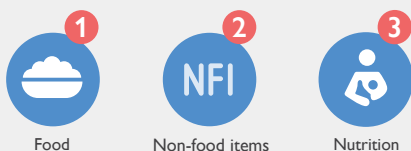
Vulnerabilities



Shelter Indicator



Priority Needs (Ranking scale)



Return Intention

Data collected through the return intention indicator estimates that the entire IDP caseload (100%) intends to remain in their current locations of displacement.

IOM DISCLAIMER

The opinions expressed in the report are those of the authors and do not necessarily reflect the views of the International Organization for Migration (IOM). The designations employed and the presentation of material throughout the report do not imply the expression of any opinion whatsoever on the part of IOM concerning the legal status of any country, territory, city or area, or of its authorities, or concerning its frontiers or boundaries.

IOM is committed to the principle that humane and orderly migration benefits migrants and society. As an intergovernmental organization, IOM acts with its partners in the international community to: assist in the meeting of operational challenges of migration; advance understanding of migration issues; encourage social and economic development through migration; and uphold the human dignity and well-being of migrants.

*DTM Sudan adopts the WHO global estimate that approximately 15% of the total population are persons with disabilities (PwD).