

EMERGENCY EVENT TRACKING

Data collection: 2 March 2023



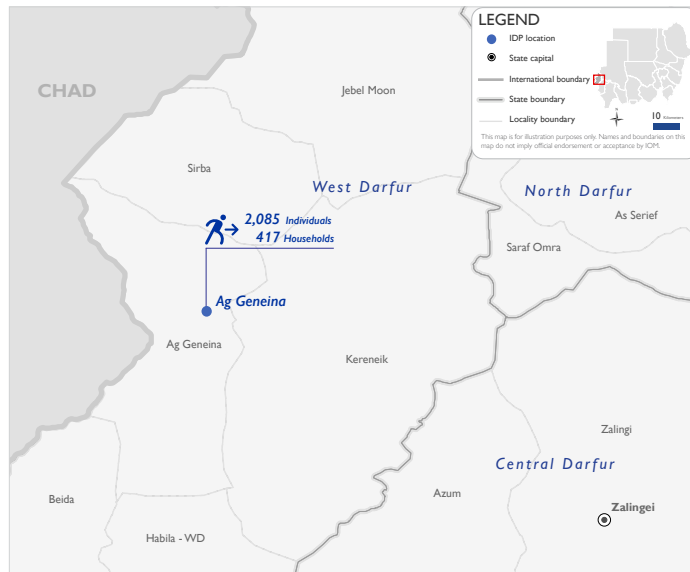
As a subcomponent of the Mobility Tracking methodology (Round Five), the Emergency Event Tracking (EET) tool is deployed to track sudden displacement, provide more frequent updates on the scale of displacement, and quantify the affected population when needed.

Event Overview

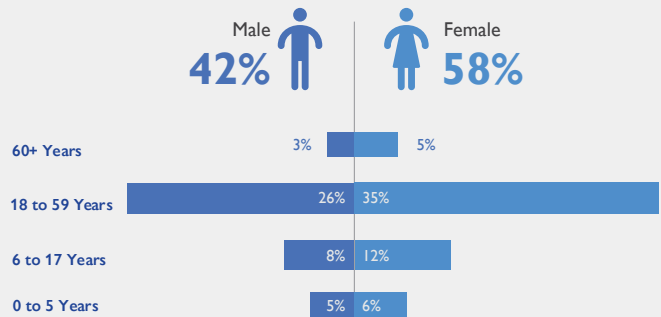


On 27 February 2023, a fire broke out in Salaheldin School gathering site in Ag Geneina locality, West Darfur, due to a cooking accident within the site. Reportedly, 406 houses were completely burnt down, and 144 houses were partially damaged. The first EET update estimates a total number of 2,085 individuals (417 households) are currently seeking shelter in Salaheldin School (83.2%) in Hai El Madaris area, Alzahraa School for girls (8.4%), Alghabat (4.3%), and Mahkamat Alsultan (4.1%) in Althora Area, in Ag Geneina locality, West Darfur. This accounts for secondary displacement as the entire caseload (100%) was originally displaced from Krindig 2.

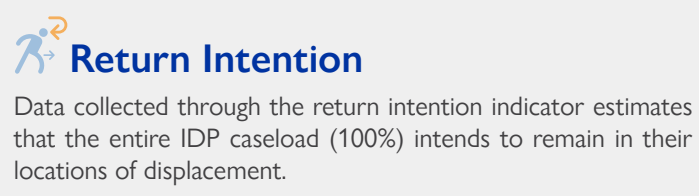
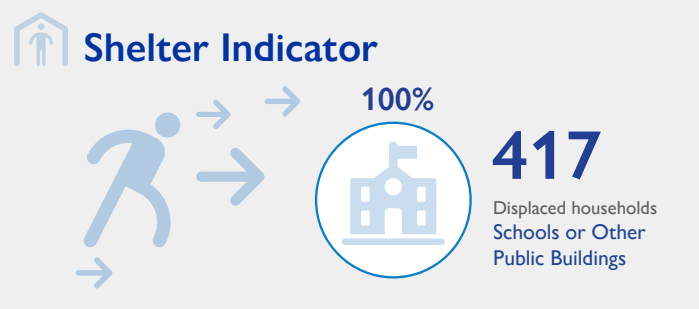
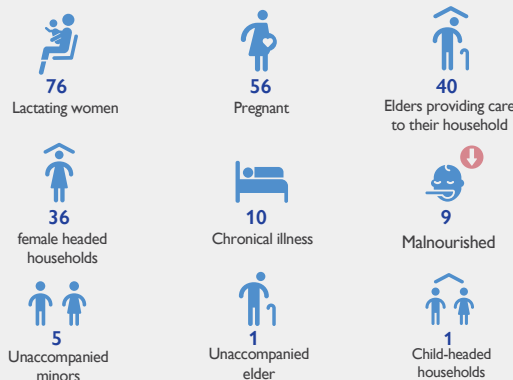
Field teams indicate that there were no deaths as a result of the fire and that 12 individuals were injured. There have been 470 cases of reported lost goods, cattle, and/or livestock. All displaced individuals are Sudanese nationals. At least 234 cases of additional vulnerabilities in need of assistance and support were identified by key informants through DTM's Protection indicator. Additionally, DTM Sudan estimates that there are approximately 313 persons with disabilities among the IDP caseload.* Based on a ranking scale, the three priority needs across the caseload are Emergency Shelter, Food, and WASH (Water, Sanitation, & Hygiene).



Demographics



Vulnerabilities



IOM DISCLAIMER
 The opinions expressed in the report are those of the authors and do not necessarily reflect the views of the International Organization for Migration (IOM). The designations employed and the presentation of material throughout the report do not imply the expression of any opinion whatsoever on the part of IOM concerning the legal status of any country, territory, city or area, or of its authorities, or concerning its frontiers or boundaries.
 IOM is committed to the principle that humane and orderly migration benefits migrants and society. As an intergovernmental organization, IOM acts with its partners in the international community to: assist in the meeting of operational challenges of migration; advance understanding of migration issues; encourage social and economic development through migration; and uphold the human dignity and well-being of migrants.

*DTM Sudan adopts the WHO global estimate that approximately 15% of the total population are persons with disabilities (PwD).