



Young Afghan child in his family's thatched shetler. Kunduz © IOM 2017

ABOUT DTM

The Displacement Tracking Matrix (DTM) is a system that tracks and monitors displacement and population mobility. It is designed to regularly and systematically capture, process and disseminate information to provide a better understanding of the movements and evolving needs of displaced populations, whether on site or en route. For more information about the DTM, please visit www.displacement.iom.int/afghanistan.

In Afghanistan, DTM employs the Baseline Mobility Assessment tool, designed to track mobility, determine the population sizes and locations of forcibly displaced people, reasons for displacement, places of origin, displacement locations and times of displacement, including basic demographics, as well as vulnerabilities and priority needs. Data is collected at the settlement level, through key informant interviews, focus group discussions, and direct observations.

This provincial report summarises the DTM findings in Kunduz. The data has been collected throughout 7 districts and 281 settlements in Kunduz. This provincial report is supplementary to its nationwide counterpart, please see: Baseline Mobility Assessment Summary Results (November – December 2017).

DTM enables IOM and its partners to deliver evidence-based, better targeted, mobility-sensitive and sustainable humanitarian assistance, reintegration, community stabilization and development programming.

5 TARGET POPULATIONS

Through the Baseline Mobility Assessments, DTM tracks the locations, population sizes, and cross-sectoral needs of the five core target population categories:

1. Returnees from Abroad
2. Out-Migrants
Internally Displaced Persons (IDPs), subdivided into the following three categories:
3. Arrival IDPs
4. Returnee IDPs
5. Fled IDPs

Data on population sizes for the 5 target population categories is collected by time of displacement, using each of the following time frames: 2012-2015 • 2016 • 2017.

HIGHLIGHTS



7 districts assessed

281 settlements assessed

in Aliabad, Chardarah, Dasht-e-Archi, Emamsaheb Khanabad, Kunduz and Qala-e-Zal



1,421

key informants interviewed



99,401

returnees from abroad [2012–2017]



58,867

IDPs [2012–2017] currently in host communities



585,475

former IDPs [2012–2017] have returned to their homes



78,973

out-migrants fled abroad [2012–2017]



15,723

out-migrants fled to Europe (20% of out-migrants)



1,455

returnees and IDPs live in tents or in the open air (1% of total returnees and IDPs)



3 in 5

persons from Kunduz province has been an IDP and returned home (61%)



2 in 3

more than 67% of persons from Kunduz, Aliabad and Chardarah districts have been an IDP and returned home (61%)



1 in 3

persons from Aliabad is either a Returnee or an IDP



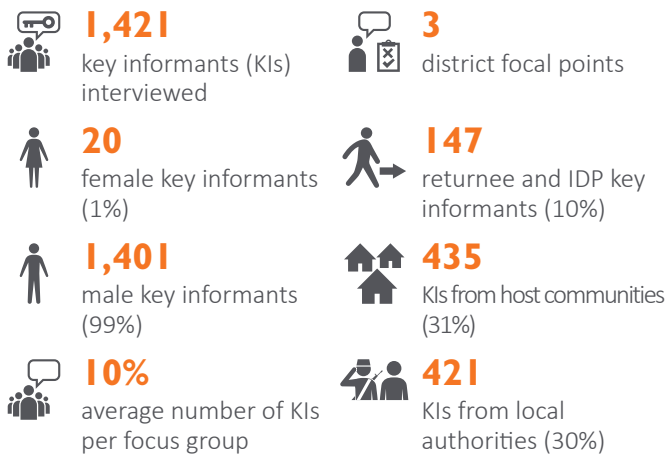
1 in 4

persons from Aliabad and Chardarah is a Returnee

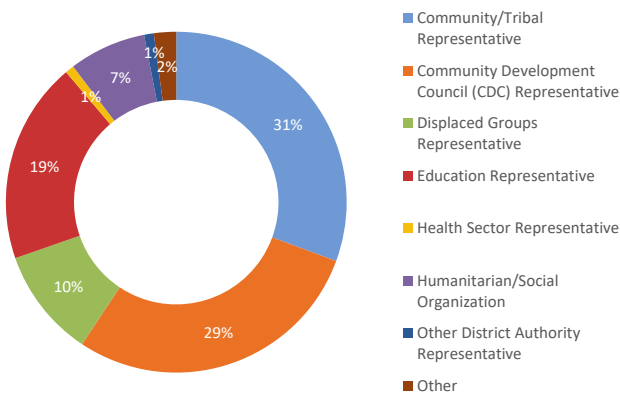
KEY INFORMANTS

DTM's field enumerators, District Focal Points (DFPs), collect data at the settlement level, predominantly through focus group discussions with key informants. The average size of focus groups is five key informants per group. In the rare case that DTM's District Focal Points cannot physically reach a community, due to insecurity, conflict, or risk of retaliation by anti-government elements, DFPs meet the focus groups at a safe place outside their communities or conduct the assessments by phone.

Significant highlights regarding the overall composition of Key Informant Focus Groups include the following:



Key Informants by Type | Kunduz



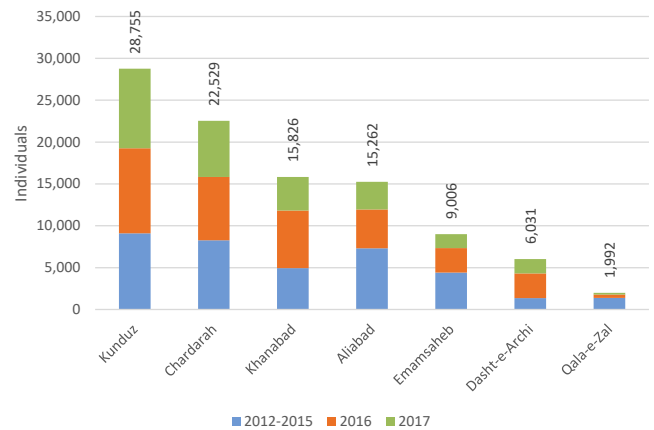
RETURNEES

Returnees are Afghan nationals who have returned to Afghanistan in the assessed location after having spent at least six months abroad. This group includes both documented returnees (Afghans who were registered refugees in host countries and then requested voluntary return with UNHCR and relevant national authorities) and undocumented returnees (Afghans who did not request voluntary return with UNHCR, but rather returned spontaneously from host countries, irrespective of whether or not they were registered refugees with UNHCR and relevant national authorities).

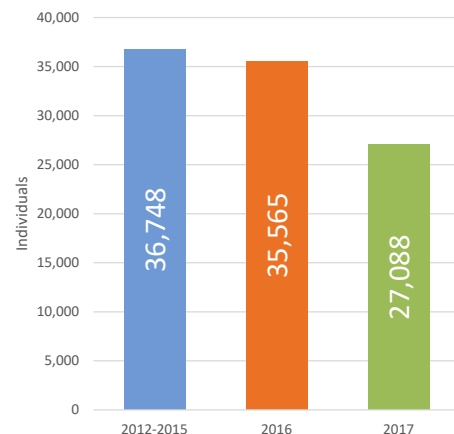
The number of returnees from abroad decreased by 3% in 2016 alone, as compared to the period between 2012 and 2015, followed by a 24% decrease in returns in 2017.



Returnees from Abroad by District | Kunduz



Returnees from Abroad | Annual Trends | Kunduz



IDPs

Arrival IDPs (IDPs) are Afghans who have fled from other settlements in Afghanistan and have arrived and presently reside at the assessed location / host community, as a result of, or in order to avoid, the effects of armed conflict, generalized violence, human rights violations, protection concerns, or natural and human-made disasters.

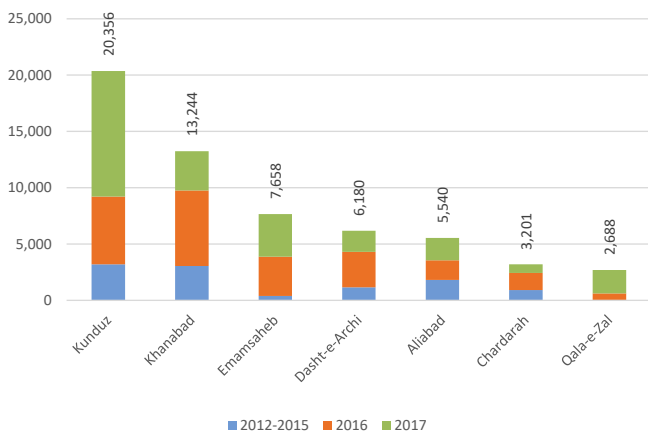
58,867
IDPs

95%
IDPs relocate within their home province

100%
displaced due to conflict

0%
displaced by natural disaster

Arrival IDPs by District | Kunduz



OUT-MIGRANTS

Out-Migrants are Afghans who have moved or fled abroad from the assessed location, whatever the cause, reason or duration of expatriation. This category includes refugees, displaced and uprooted people, and economic migrants who have left Afghanistan.

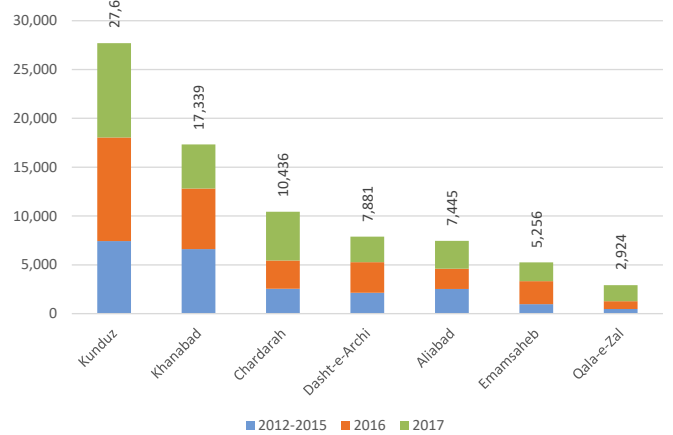
78,973
fled abroad

15,723
fled to Europe (20%)

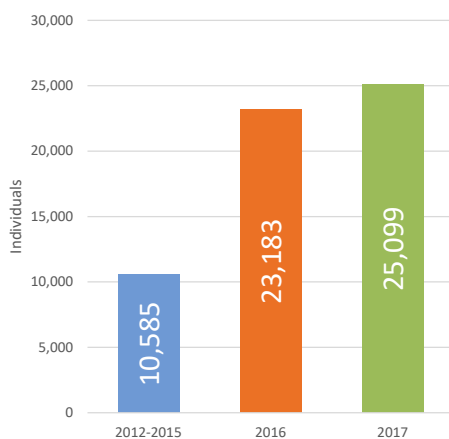
41,929
fled to Iran (53%)

21,248
fled to Pakistan (27%)

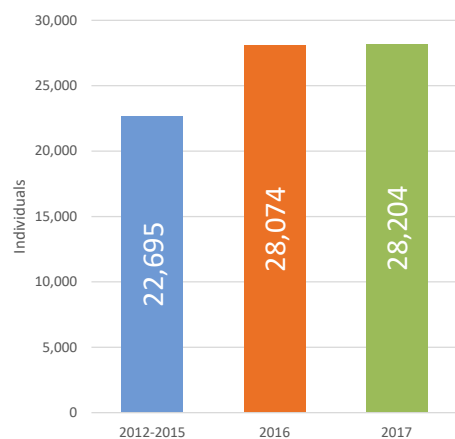
Out-Migrants by District | Kunduz



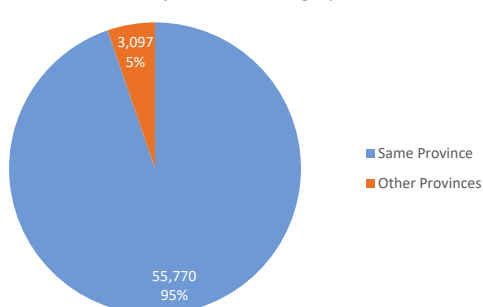
Arrival IDPs | Annual Trends | Kunduz



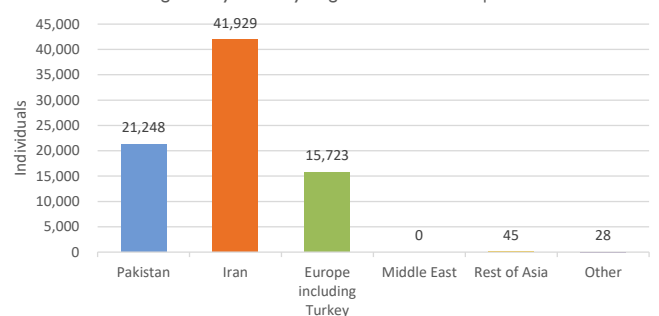
Out-Migrants | Annual Trends | Kunduz



Arrival IDPs by Province of Origin | Kunduz



Out-Migrants by Country/Region of Destination | Kunduz



Displaced Individuals in all 5 Target Populations | Summary Overview by Province

Province	*Base Population	Total Inflow (Returnees + Arrival IDPs)	% of Pop.	Returnees	% of Pop.	Returnee IDPs	% of Pop.	Arrival IDPs	% of Pop.	Fled IDPs	% of Pop.	Out Migrants	% of Pop.
Aliabad	48,910	20,802	30%	15,262	22%	47,673	97%	5,540	8%	2,813	6%	7,445	15%
Chardarah	76,232	25,730	25%	22,529	22%	185,826	244%	3,201	3%	11,934	16%	10,436	14%
Dasht-e-Archi	87,963	12,211	12%	6,031	6%	17,276	20%	6,180	6%	688	1%	7,881	9%
Emamsaheb	208,981	16,664	7%	9,006	4%	44,387	21%	7,658	3%	11,808	6%	5,256	3%
Khanabad	142,646	29,070	17%	15,826	9%	29,888	21%	13,244	8%	13,855	10%	17,339	12%
Kunduz	323,956	49,111	13%	28,755	8%	217,851	67%	20,356	5%	26,156	8%	27,692	9%
Qala-e-Zal	72,621	4,680	6%	1,992	3%	42,574	59%	2,688	3%	1,750	2%	2,924	4%
Total	961,309	158,268	14%	99,401	9%	585,475	61%	58,867	5%	69,004	7%	78,973	8%

* Base Population source: OCHA, CSO Population Estimates for 2016 to 2017, 15-AUG-2016

Symbology: > 20% of base population

Total Inflow (Returnees + IDPs) | Summary by Province

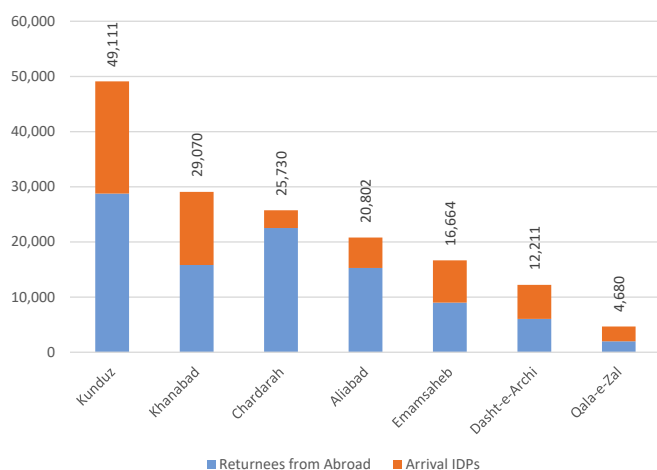
Province	Returnees	Arrival IDPs	Total Inflow
Kunduz	28,755	20,356	49,111
Khanabad	15,826	13,244	29,070
Chardarah	22,529	3,201	25,730
Aliabad	15,262	5,540	20,802
Emamsaheb	9,006	7,658	16,664
Dasht-e-Archi	6,031	6,180	12,211
Qala-e-Zal	1,992	2,688	4,680
Total	99,401	58,867	158,268

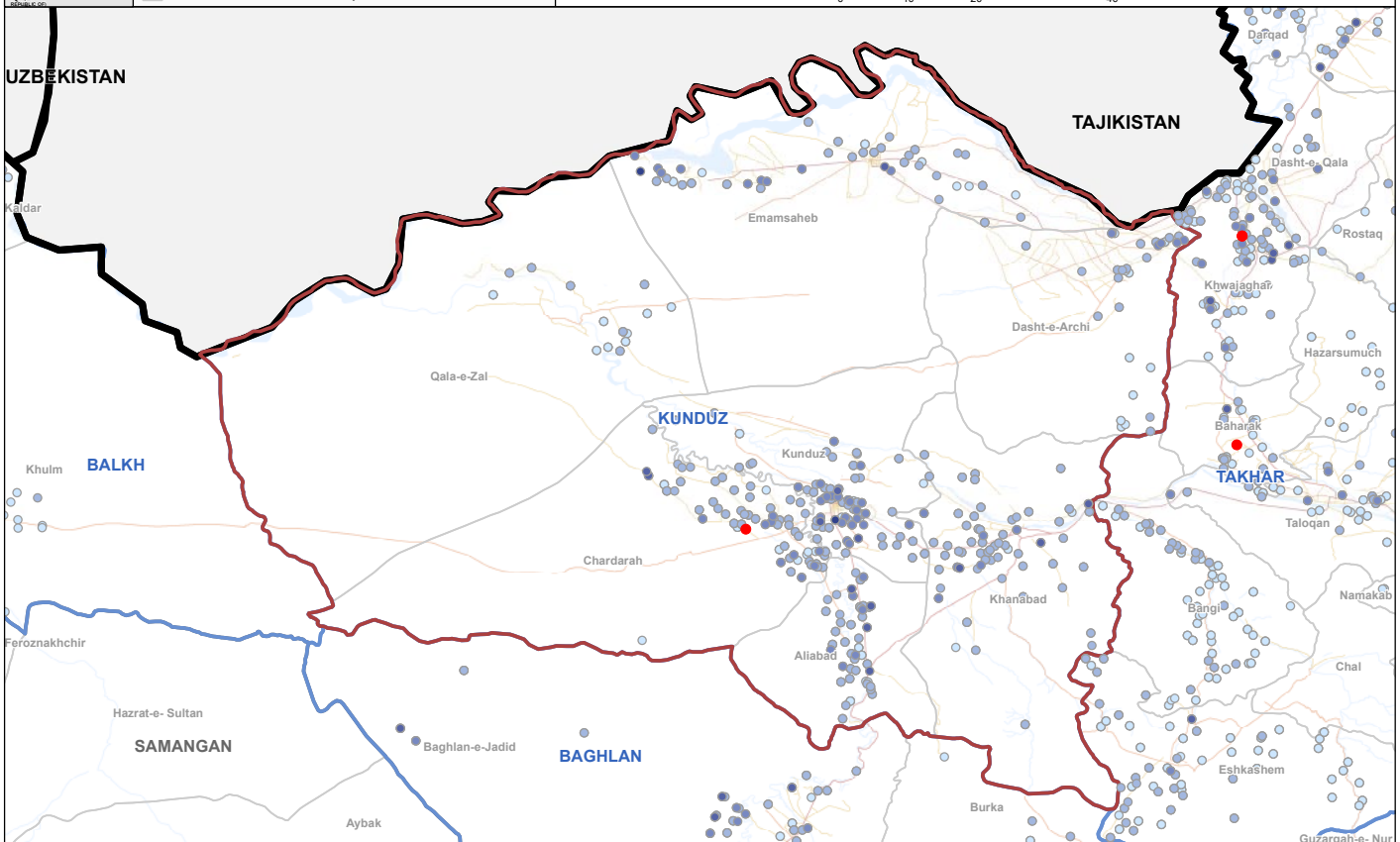
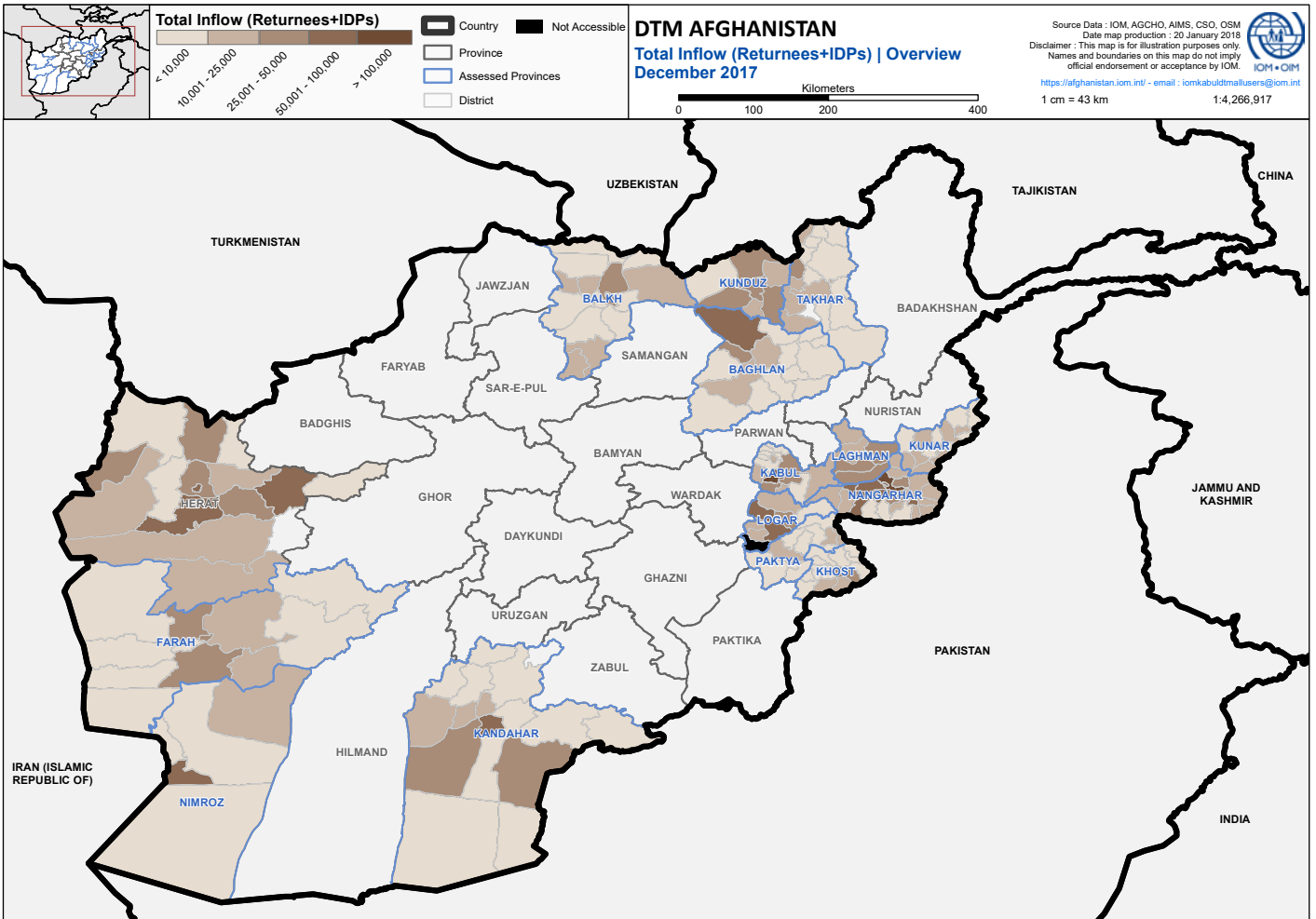
Overall, Kunduz province hosts a total inflow of 158,258 returnees and IDPs, of which 63% are returnees and 37% are IDPs. The table below shows the 20 settlements that are most affected by this influx. These 20 settlements (7% of the 281 assessed settlements in Kunduz) host 22% of the province's returnees and IDPs. These communities are especially fragile and susceptible to social instability induced by this large influx and the subsequent competition for limited, already overstretched resources and job opportunities. Although Kunduz district hosts the most displaced persons (49,111), the two most affected settlements are located in Aliabad district: hosting 3,581 and 2,565 persons.

Top 20 settlements hosting the most Returnees + IDPs

Rank	Settlement	District	Individuals
1	Omar-khail (1)	Aliabad	3,581
2	Now Abad number 1	Aliabad	2,565
3	Chugha-i-Ulya(1)	Khanabad	2,480
4	Zard-kamar	Khanabad	2,375
5	Sare Dowra	Kunduz	2,016
6	Chelkapa Kandahari	Emamsaheb	1,995
7	Ali khil No.2	Kunduz	1,730
8	Rostaq Abad	Kunduz	1,648
9	Mohammad Ishaq	Kunduz	1,642
10	Charm Gari	Kunduz	1,631
11	Khaja Kafter	Chardarah	1,561
12	Qangharat (1)	Emamsaheb	1,547
13	Za Khel (2)	Kunduz	1,511
14	Mangal Abad	Chardarah	1,501
15	Ibrahim Khel	Kunduz	1,360
16	Haji sangi	Kunduz	1,359
17	Chella Mazar	Kunduz	1,352
18	Seh Darak	Kunduz	1,284
19	Barzangi Arbab Najmudin	Emamsaheb	1,239
20	Haji Abdul Hakim	Dasht-e-Archi	1,224
	Total		35,601

Total Inflow (Returnees + IDPs) | Kunduz





TOP 5 DISTRICTS

Evidence-based prioritization is essential to the delivery of better targeted assistance and basic services. DTM provides partners with lists of priority areas in most need of assistance, based on a variety of sectoral indicators, at Province, District and Settlement levels.

(NOTE: The number of individuals reported below is based on the Total Inflow: IDPs + Returnees)

TOP 5 Districts with the most Returnees and IDPs (Returnees + IDPs)

Rank	District	Individuals
1	Kunduz	49,111
2	Khanabad	29,070
3	Chardarah	25,730
4	Aliabad	20,802
5	Emamsaheb	16,664
Grand Total		141,377

TOP 5 in need of Shelter (IDPs + Returnees living in Tents or in the Open Air)

Rank	District	Individuals
1	Emamsaheb	680
2	Chardarah	605
3	Aliabad	211
4	Khanabad	N/A
5	Dasht-e-Archi	N/A
Grand Total		1,496

TOP 4 in need of Water (potable water > 3 km away)

Rank	District	Individuals
1	Khanabad	4,036
2	Emamsaheb	2,457
3	Dasht-e-Archi	2,452
4	Aliabad	2,399
5	Kunduz	276
Grand Total		11,620

TOP 5 in need of Clinics (nearest clinic > 5 km away)

Rank	District	Individuals
1	Khanabad	11,162
2	Chardarah	5,502
3	Kunduz	3,968
4	Aliabad	3,949
5	Dasht-e-Archi	2,258
Grand Total		31,376

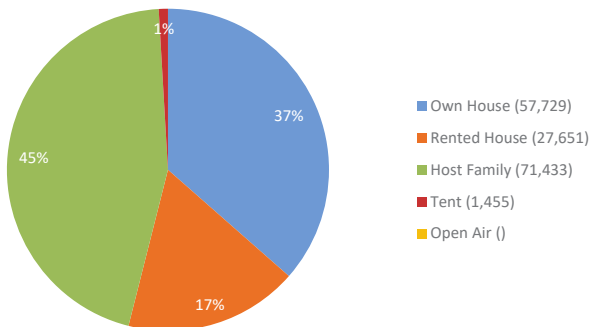
TOP 5 in need of Schools (nearest school > 3 km away)

Rank	District	Individuals
1	Aliabad	3,122
2	Chardarah	2,423
3	Emamsaheb	1,865
4	Khanabad	1,389
5	Dasht-e-Archi	1,093
Grand Total		9,892

TOP 5 in need of Markets (nearest market > 10 km away)

Rank	District	Individuals
1	Chardarah	20,414
2	Khanabad	16,763
3	Aliabad	8,935
4	Dasht-e-Archi	7,036
5	Kunduz	6,307
Grand Total		59,455

Total Inflow (Returnees+IDPs) | Shelter | Kunduz



STORIES FROM THE DISPLACED

FROM THE SOVIET OCCUPATION TO NOW: CONTINUAL DISPLACEMENT

“My name is Abdul Nafi, I am the father of 12 people in my family and original resident of the Samangan province.” Now living as a return refugee in Kunduz, Abdul Nafi sits cross-legged in his home and tells us his story of displacement, which starts over 30 years ago.

“Before the Russian attack in Afghanistan, I was living peacefully and busy in agriculture,” he recounts. “But, during the president Babrak Karmal regime and the Russian invasion, in 1985, we had to leave our village. We left our homeland towards Pakistan and it was impossible to pass the roads by car. We moved and travelled for hours and reached the Cheshma Sher area of the Baghlan province. When we tried to cross this area, Russian forces fired on passenger and more than 20 people were killed. We managed to escape and after 25 days of travelling by foot, we reached Kowita, Pakistan.”

Abdul Nafi spent a long 31 years living in Pakistan where he worked in agriculture. However, he informs us that in recent years the living condition in Pakistan for Afghans rapidly deteriorated. As such, he decided to return to home country to seek a better life. In 2016, he initially moved to Baghlan for three months; however, unable to find any work, his relatives persuaded him to settle in Kunduz. “They gave me land for a house, as everybody knows housebuilding needs money.” In the end we didn’t have enough money to cover the roofs, but fortunately one of the humanitarian agencies helped us,” Abdul Nafi explains. Currently, he is grateful to have a roof over his head, but he is well aware of the difficulties that his family face. “All my sons are illiterate and cannot get a good job. Therefore, they have to travel to other provinces for work and their daily income doesn’t cover all of our needs.”



In 2016 alone, 35,565 return refugees moved to Kunduz. This is almost the same amount of return refugees that Kunduz absorbed between all of 2012 and 2015. As a result, Abdul Nafi and his family find themselves as part of a group of displaced Afghans that are all competing for limited and already overstretched resources and job opportunities

DTM in Afghanistan is generously supported by:



ANNEX I ▪ TOP 200 SETTLEMENTS

RANKED BY TOTAL IN-FLOW [RETURNEES + IDPS]

Rank	District	Settlement	Total In-Flow	Rank	District	Settlement	Total In-Flow
1	Aliabad	Omar-khail (1)	3,581	53	Emamsaheb	Alaif Berdi	840
2	Aliabad	Now Abad number 1	2,565	54	Kunduz	Lowdain	831
3	Khanabad	Chughha-i-Ulya(1)	2,480	55	Kunduz	300 family's	818
4	Khanabad	Zard-kamar	2,375	56	Dasht-e-Archi	Abdul Hameed Abedi	809
5	Kunduz	Sare Dowra	2,016	57	Chardarah	Choraq (2)	803
6	Emamsaheb	Chelkapa Kandahari	1,995	58	Kunduz	Zar Kharid-i-ulya	792
7	Kunduz	Ali khil No.2	1,730	59	Kunduz	Karta Faiz Abad	781
8	Kunduz	Rostaq Abad	1,648	60	Kunduz	Baloch (1)	779
9	Kunduz	Mohammad Ishaq	1,642	61	Dasht-e-Archi	Mirza Khan Qarloq No 1	770
10	Kunduz	Charm Gari	1,631	62	Emamsaheb	Naqileen Sheer Mahi	770
11	Chardarah	Khaja Kafter	1,561	63	Chardarah	Qarah Khani	759
12	Emamsaheb	Qangharat (1)	1,547	64	Aliabad	Taheri	751
13	Kunduz	Za Khel (2)	1,511	65	Kunduz	Za khail Khumdan	748
14	Chardarah	Mangal Abad	1,501	66	Kunduz	Chem Tapa	747
15	Kunduz	Ibrahim Khel	1,360	67	Emamsaheb	Fanjugha Uzbekai	741
16	Kunduz	Haji sangi	1,359	68	Khanabad	Eshan Tob	734
17	Kunduz	Chella Mazar	1,352	69	Aliabad	Qasem-ali	726
18	Kunduz	Seh Darak	1,284	70	Kunduz	Chahar Taaq Muhammad Jan (2)	721
19	Emamsaheb	Barzangi Arbab Najmudin	1,239	71	Khanabad	Band-barq	714
20	Dasht-e-Archi	Haji Abdul Hakim	1,224	72	Kunduz	Katar Khail	714
21	Kunduz	Tarnow	1,188	73	Kunduz	Alchain	712
22	Aliabad	Now Abad Aab Borda	1,157	74	Kunduz	Bouz Kandahari Alchain Taimori Muhammad Hazam Kh*	711
23	Kunduz	Farkhari Ha	1,140	75	Chardarah	Gulbagh	697
24	Dasht-e-Archi	Sardar Mohammad	1,124	76	Chardarah	Nahar Sufi	690
25	Khanabad	Kobi Sufia	1,090	77	Chardarah	Ainunmujar	686
26	Kunduz	Now abad charm gari	1,085	78	Emamsaheb	Usta Mang	673
27	Kunduz	Chahar Taaq Muhammad Jan	1,053	79	Kunduz	Kouran	665
28	Khanabad	Jukana	1,038	80	Chardarah	Wazeer Village	664
29	Kunduz	Shahr-i Kohna	1,038	81	Khanabad	Sahak	660
30	Kunduz	Hassan Abad	1,018	82	Kunduz	Haji Muhammad Omar	656
31	Chardarah	Khala Zai	988	83	Khanabad	Khowja-pesta	646
32	Aliabad	Naqel	986	84	Aliabad	Boye-mohsin Ramazan	645
33	Khanabad	Kadogani Hulya	973	85	Kunduz	Zarkharid Hatmanzai	645
34	Chardarah	Qara Yatim (1)	971	86	Dasht-e-Archi	Haji Murad	642
35	Kunduz	Work shop	966	87	Kunduz	Khvajeh Mashhad	637
36	Khanabad	Hayatabad	953	88	Kunduz	Qarawol Tapa	637
37	Emamsaheb	Zard Kamar (1)	952	89	Chardarah	Yatem	634
38	Kunduz	Arab-ha (1)	941	90	Kunduz	Sher Kush	632
39	Khanabad	Aka-khail Shakh-tepa	934	91	Qala-e-Zal	Chuqor Qeshlaq	630
40	Chardarah	Chare Abad	928	92	Chardarah	Basoz-i-bala	627
41	Emamsaheb	Chilkupa	923	93	Kunduz	Now abad shora khak	625
42	Dasht-e-Archi	Now Abad Qarlagh	913	94	Kunduz	Kunam Kalan	624
43	Kunduz	Maidan-e-Pakhta	882	95	Kunduz	Ali Khel	609
44	Aliabad	Lala Maydan (3)	875	96	Chardarah	Now Abad	601
45	Dasht-e-Archi	Jamah Aman Qarlogh	875	97	Chardarah	Qosh Tapa (1)	600
46	Kunduz	Khowja Ghaltan	871	98	Qala-e-Zal	Afghan Mazar	598
47	Khanabad	Kabuli-qeshlaq (1)	865	99	Khanabad	Mullah-khail	597
48	Dasht-e-Archi	Mirza Khan Qarloq	862	100	Khanabad	Mir Ghawsuddin	596
49	Emamsaheb	Durman Sufia	848	101	Kunduz	Sare Asyab	590
50	Kunduz	Shora Khake Bala	847	102	Dasht-e-Archi	Dad Sati Uzbeki	584
51	Aliabad	Sabz-ali	846	103	Kunduz	Kala pazi	581
52	Chardarah	Aq Shakh	841	104	Dasht-e-Archi	Jamah Mula Bala	577

Rank	District	Settlement	Total In-Flow	Rank	District	Settlement	Total In-Flow
105	Kunduz	Now Abad Haji Agha	574	161	Khanabad	Mulla-ghullam	396
106	Aliabad	Cheip Paen	567	162	Aliabad	Mehrabuddin	388
107	Emamsaheb	Chambos kol	567	163	Kunduz	Malarghi	387
108	Khanabad	Musa Za'i (1)	566	164	Kunduz	Bouz Kandahari Haji Shah Muhammad	383
109	Qala-e-Zal	Aq Tappeh	560	165	Chardarah	Bajoure	381
110	Chardarah	Arab Tapa	556	166	Chardarah	Baz Qum	378
111	Khanabad	Qaram Qol	550	167	Emamsaheb	Churagh	378
112	Dasht-e-Archi	Dasht-e-archi	547	168	Chardarah	Eissa Khail	371
113	Aliabad	Ghechak sai	546	169	Emamsaheb	Qara-i-kandahari Kutarma	371
114	Emamsaheb	Guzare miralam	542	170	Khanabad	Khob-dara-kalan	370
115	Emamsaheb	Majar turkmanai	536	171	Chardarah	Mang Tapa	362
116	Khanabad	Kohna-qeshlaq Awj-quduq	536	172	Khanabad	Mahfeli-char-toot	359
117	Aliabad	Kabulyan	535	173	Khanabad	Chahar Tut	358
118	Chardarah	Qunghorat village	535	174	Kunduz	Jarguzar	352
119	Khanabad	Jangal Bashi	533	175	Chardarah	Abdul Fatah Shahed	351
120	Chardarah	Noorzai	531	176	Aliabad	Pul-kheshti	350
121	Kunduz	Chebertma	530	177	Aliabad	Lala Maidan 4	350
122	Chardarah	Aq Saray	529	178	Emamsaheb	Qanjughha-i-shahr	350
123	Aliabad	Kandahari Kalay	526	179	Khanabad	Ajal	350
124	Chardarah	Baloch Abad	524	180	Dasht-e-Archi	Chargi Qarlogh	349
125	Khanabad	Darwaza Kan	517	181	Dasht-e-Archi	Sayed Zeno Khairullah Wa Haji Naserullah	344
126	Chardarah	Mama Khail	516	182	Aliabad	Cheep-guzar / Cheip Bala	340
127	Qala-e-Zal	Halqa Kol	511	183	Dasht-e-Archi	Subhan Qul	337
128	Khanabad	Tawos-abad	508	184	Chardarah	Qarya Qasab	335
129	Chardarah	Qunghorat Mola Eish Mohammad	505	185	Khanabad	Aruchi	332
130	Aliabad	Haji Hussain balai Nahr	500	186	Chardarah	Hai Khanum	331
131	Khanabad	Qarsi	496	187	Qala-e-Zal	Char Gul	329
132	Kunduz	Chahil Dukhtaran	496	188	Khanabad	Macheen-khail	326
133	Emamsaheb	Qarghan Tapa	494	189	Kunduz	Bagh Mir Bala	324
134	Emamsaheb	Qara-i-turkman	491	190	Aliabad	Mur Shaykh (1)	323
135	Dasht-e-Archi	Wakil Qaum	490	191	Chardarah	Kharuti	323
136	Chardarah	Haji Amanullah Village	488	192	Khanabad	Sar e Dawrah	321
137	Khanabad	Nekpa-i-sufia	488	193	Chardarah	Naqelin Alukuzai	318
138	Chardarah	Ghunday Kalay	486	194	Kunduz	Atmanzai Haji Yar Jan	313
139	Khanabad	Chopani	482	195	Chardarah	Chahar Shahed	312
140	Khanabad	Tagabi-jangal Payen	473	196	Kunduz	Angor Bagh	312
141	Khanabad	Kohna Qal'a	472	197	Qala-e-Zal	Qabardi	308
142	Chardarah	Douri Robad	469	198	Khanabad	Dahan-dahi Wairan-sulimanqul	307
143	Chardarah	Basos Payen	467	199	Dasht-e-Archi	Mirza Khan Qarloq No 2	303
144	Aliabad	Khan-rasool / Balochha Mir Sheikh	459	200	Khanabad	Naw Abad Andarabi ha	302
145	Khanabad	Musa Za'i (2)	459				
146	Emamsaheb	Faiz abad	455				
147	Khanabad	Abkah	448				
148	Kunduz	Now abad qarawol tepah	448				
149	Aliabad	Madrassa (2)	444				
150	Chardarah	Wardak Hai Eissa Khil	442				
151	Khanabad	Jannat Bagh	441				
152	Kunduz	Haji Mohammad Nazar Turkman	436				
153	Kunduz	Now abad qahwa khana	435				
154	Chardarah	Choraq (1)	432				
155	Kunduz	Khazani	432				
156	Khanabad	Laghmani	429				
157	Khanabad	Dahi Kalan	425				
158	Aliabad	Bahador Mir Alam	416				
159	Kunduz	Za Khel (1)	399				
160	Aliabad	Islam Abad	397				