

OVERVIEW

In October 2023, a total of 40,370 movements were observed across the six flow monitoring points (FMPs) in Ethiopia. This represents a 4% increase in daily average movements in comparison with September 2023 when an average of 1,258 movements per day were observed.

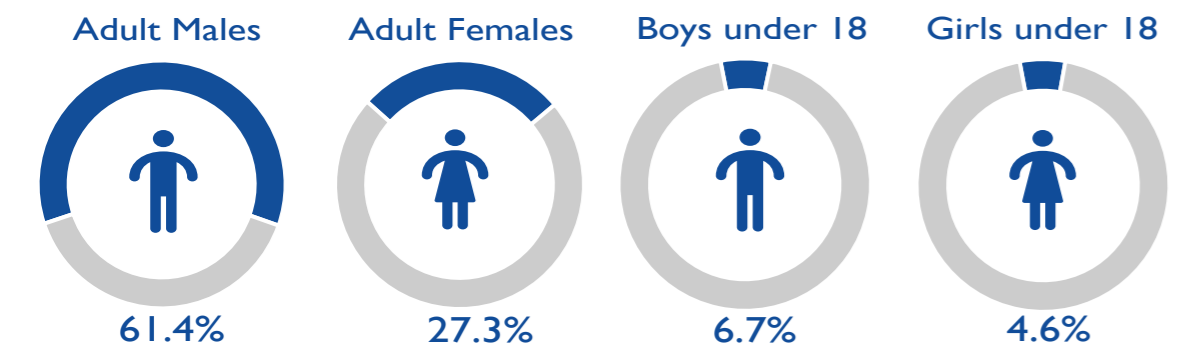
Outgoing movements (76%) during October increased while incoming movements (24%) decreased compared to the previous month, mainly due to decreased incoming flows from neighboring Sudan through the Metema and Kurmuk entry points. A total of 30,682 outgoing movements were observed, of which 12,442 (40.6%) were heading to Saudi Arabia, 6,684 (21.8%) were going to Kenya, 4,473 (14.6%) were travelling towards Somalia, 2,759 (9%) to Djibouti, 1,404 (4.6%) intending to reach Sudan, 1,162 (3.8%) heading to Yemen, and 854 (2.8%) to South Africa, while remaining movements were to other Southern African, Middle Eastern, and North American countries.

At the same time, 9,688 incoming movements were observed, of which 4,708 (48.6%) originated from Sudan, mainly fleeing the conflict that started in April, while 1,905 (19.7%) came from Djibouti, 1,846 (19.1%) from Somalia, 1,143 (11.8%) from Kenya, and the remaining from Yemen, Congo, and Nigeria. Most movements were by Ethiopians (65.8%), followed by Sudanese nationals (31.8%) fleeing the conflict in Sudan. Returning Ethiopians departed from Djibouti (29.5%), Somalia (29%), Sudan (22.2%), Kenya (17.9%), and Yemen (1.3%) and the remaining travelled from Congo and Nigeria.

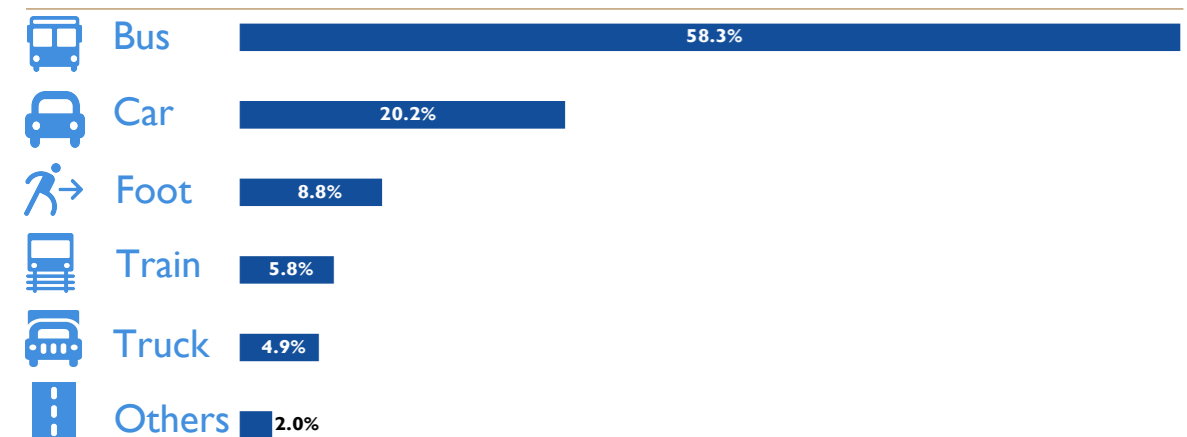
During the reporting month, overall recorded movements increased by 7%. The driving factors for cross border movements through the flow monitoring points in Ethiopia were economic reasons (61.8%), return (14%), conflict (12.5%), and natural disaster (4.4%) while the remaining 7.3% were moving for several reasons including food insecurity. Movements due to economic reasons have shown an increase of 10.8% while return movements decreased by 11.4% and conflict induced movements decreased by 3.9% this month when compared with the previous month.

DTM flow monitoring has recorded 3,929 inflows fleeing the conflict from Sudan to Ethiopia through the Metema and Kurmuk FMPs during the reporting month, which is a 5.4% decrease from the previous month. Of these incoming flows from Sudan, Sudanese nationals continue to be the majority (65.2%) followed by Ethiopian nationals (30.2%) returning home, Eritrean nationals (2.2%) and people of more than 15 other nationalities fleeing the crisis.

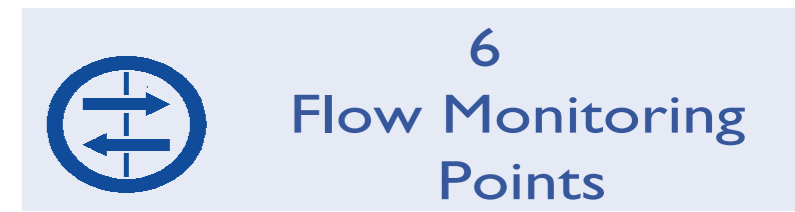
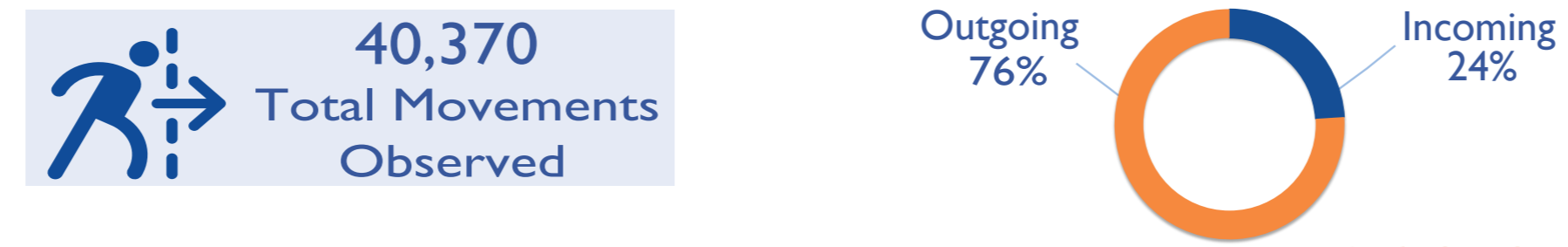
DEMOGRAPHICS



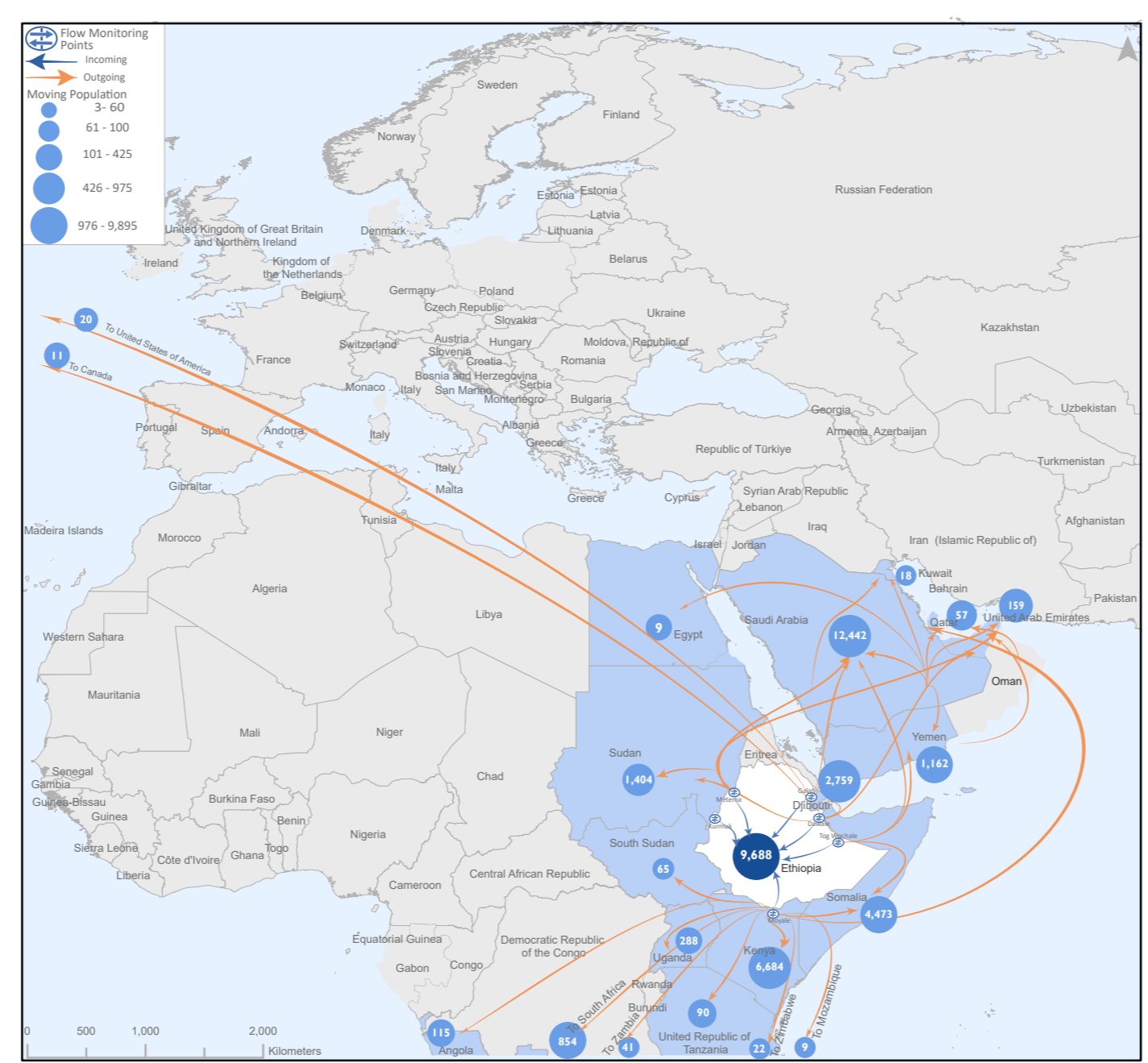
MEANS OF TRANSPORT



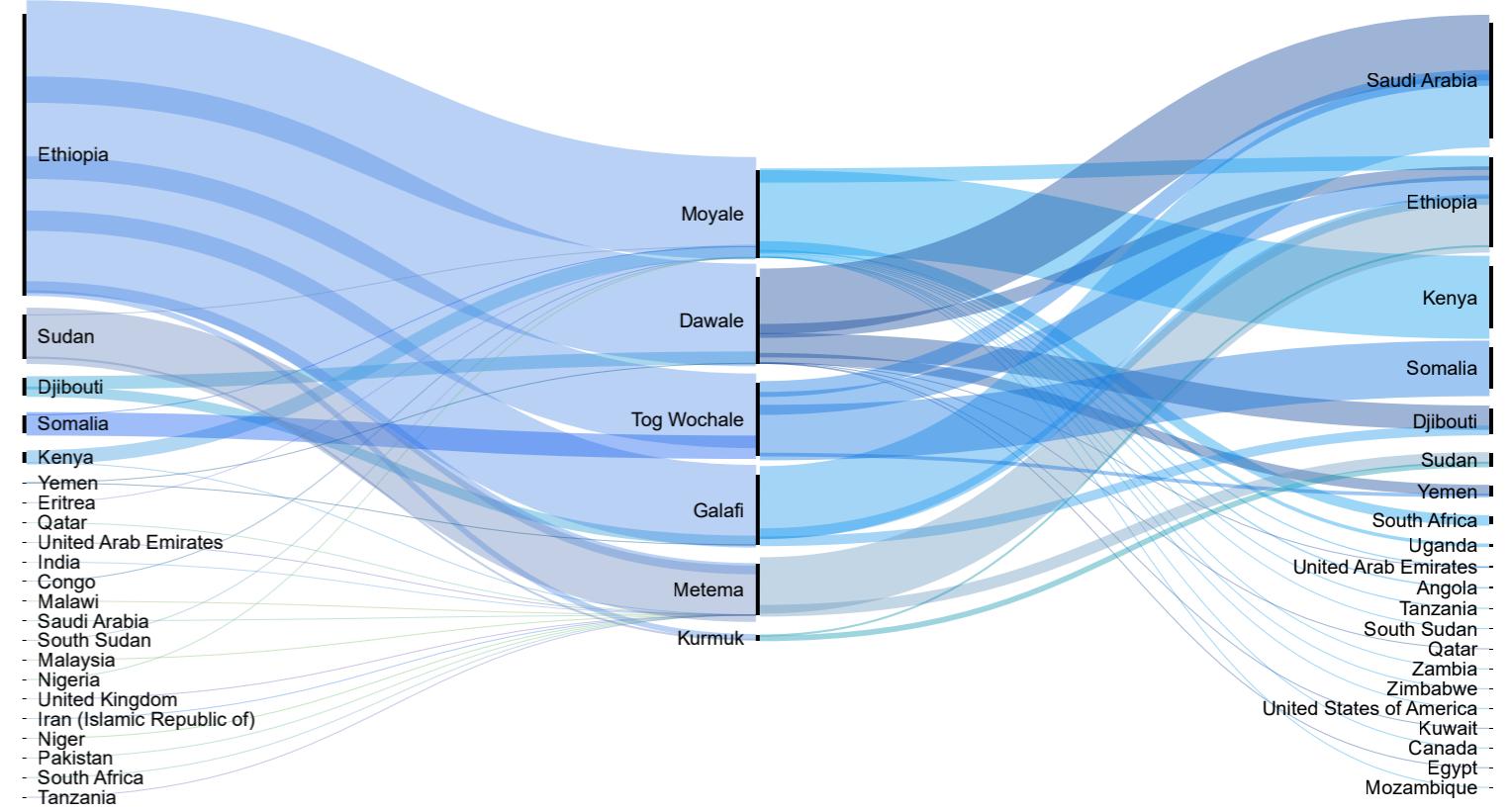
KEY FIGURES



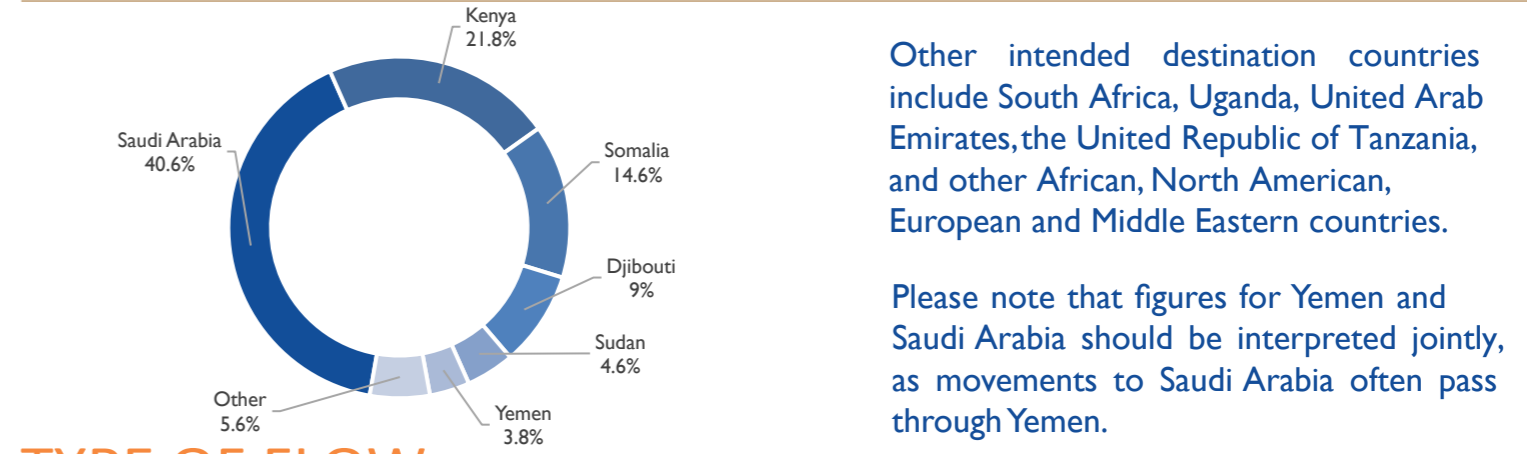
MOVEMENT ILLUSTRATION



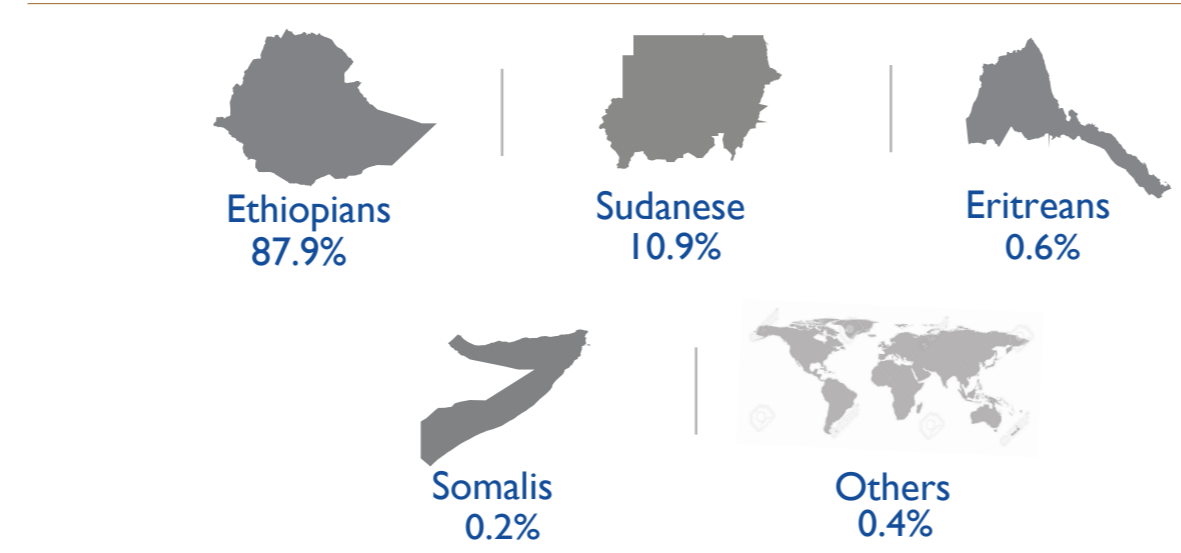
PLACES OF ORIGIN AND INTENDED DESTINATIONS VIA FLOW MONITORING POINTS



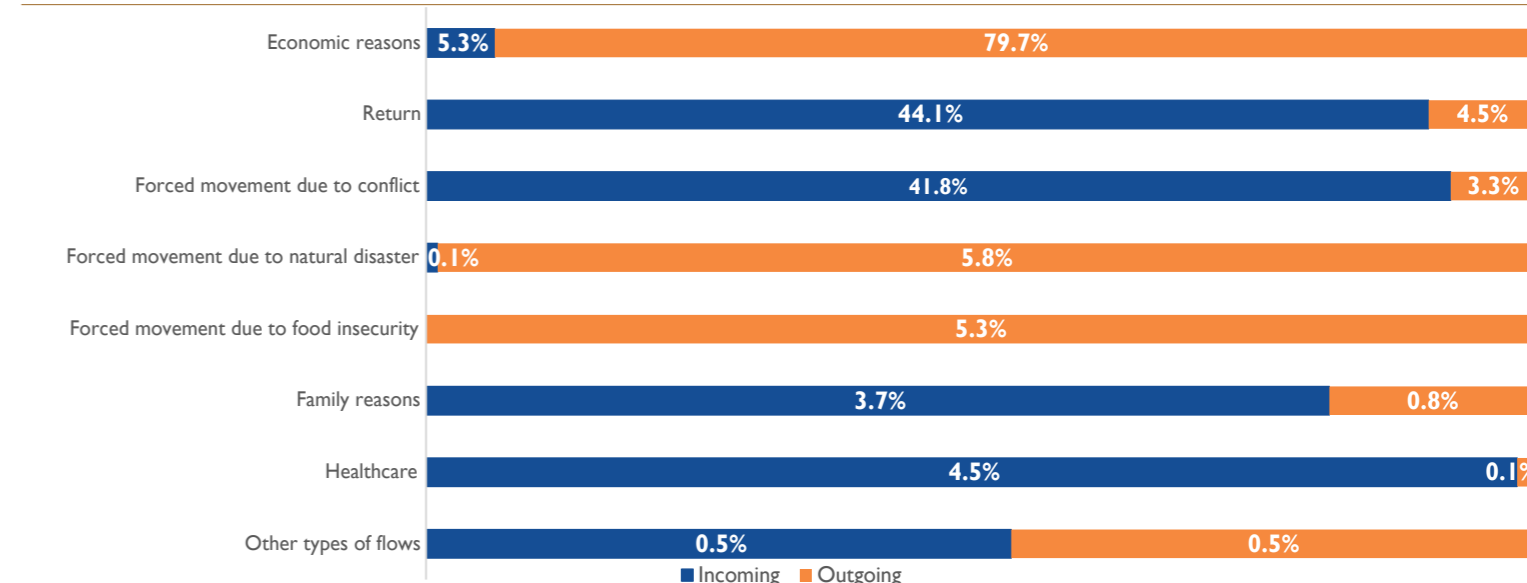
INTENDED OUTGOING DESTINATIONS



NATIONALITIES OF PEOPLE ON THE MOVE



TYPE OF FLOW



The following citation is required when using any data and information included in this information product:
"International Organization for Migration (IOM), October 2023. DTM Flow Monitoring Dashboard. IOM, Ethiopia."
For more information on terms and conditions of DTM information products, please refer to: <https://dtm.iom.int/terms-and-conditions>

Disclaimer: This map is for illustration purposes only. Names and boundaries on this map do not imply official endorsement or acceptance by IOM.
DATA SOURCES: DTM, OCHA, ESRI, UNDP