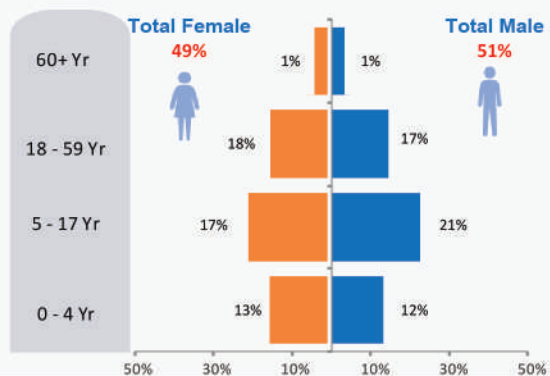


\* Overall returnees January 2017 to date **24,645**

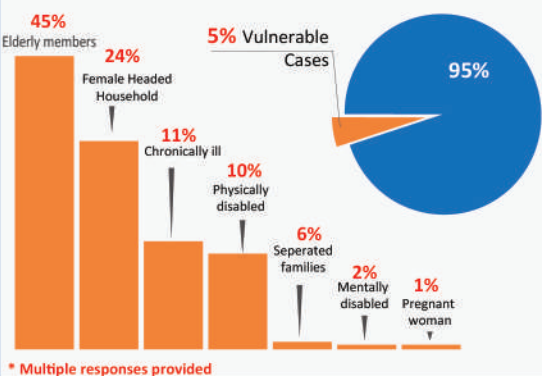


This reporting period **5,713**

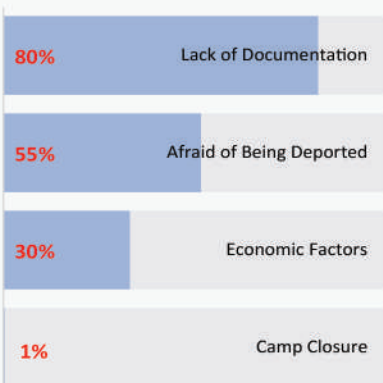
## Age-Gender Disaggregation (Individuals)



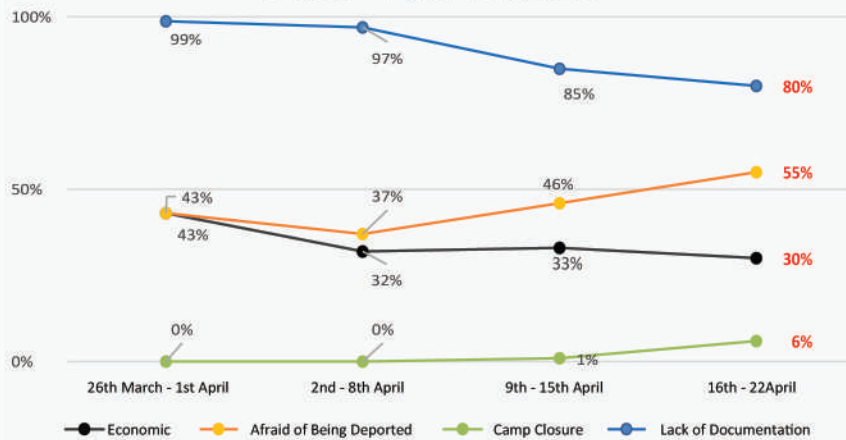
## \* Vulnerable Cases Reported



## \* PUSH Factors



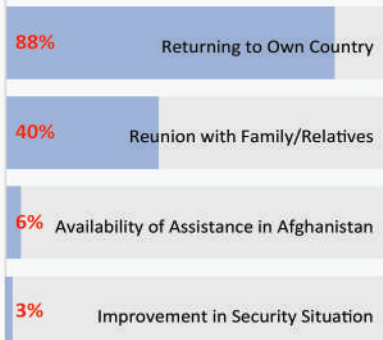
## \* Trend - PUSH Factors



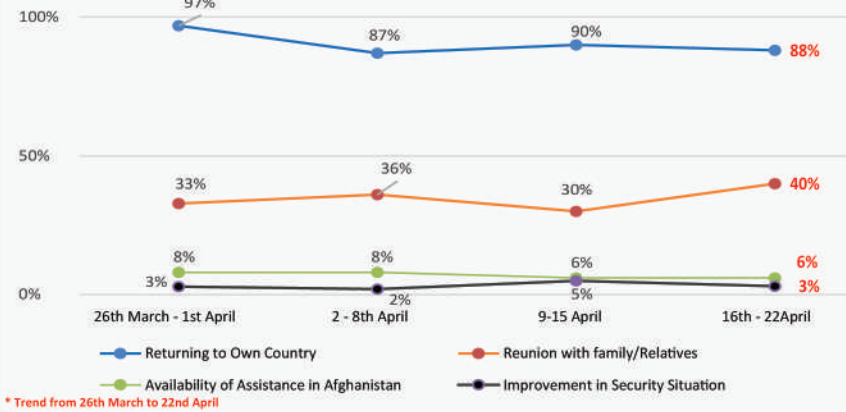
## \* % of Households travelling with assets to Afghanistan



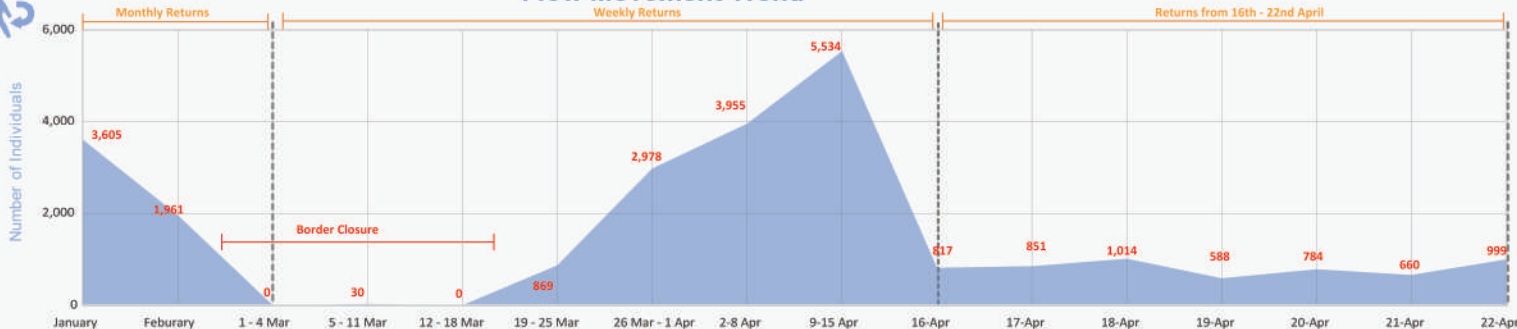
## \* PULL Factors



## \* Trend - PULL Factors



## Flow Movement Trend



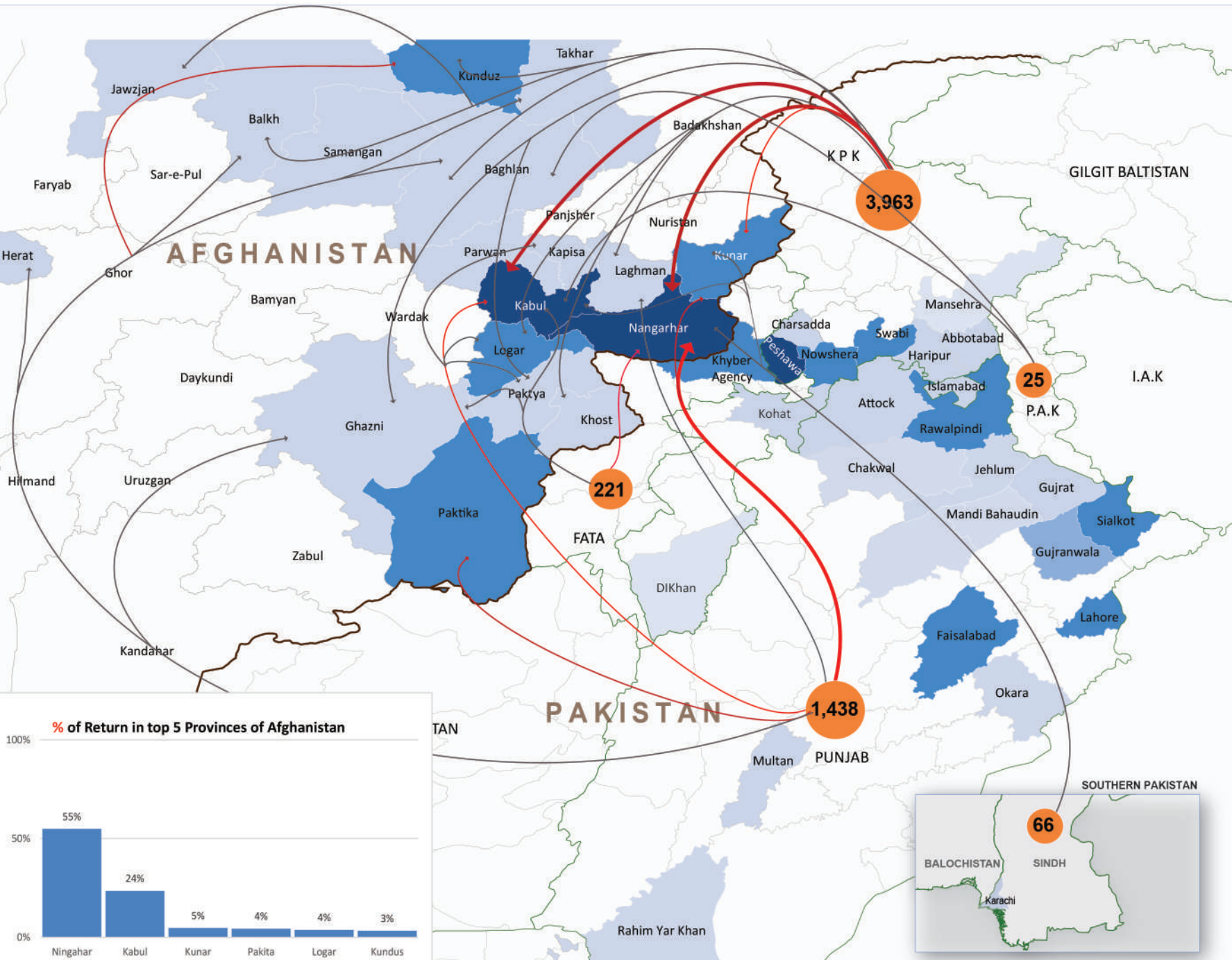
## Movement Trends and Transportation Costs



Overall figure does not include the number of deportees during the reporting period.

For feedback contact: MIRFAN@iom.int

# Population Movement ( PAKISTAN to AFGHANISTAN) 16th - 22nd April



### Legend

- ##** Number of individuals returning from Provinces of Pakistan
- Province
- District
- International Boundary

### Return Movements (Individuals)

- 1 - 100
- 101 - 1,000
- 1,001 - 3,000

### Concentration of Returnees

- 1 - 100
- 101- 500
- 500 - 3,000

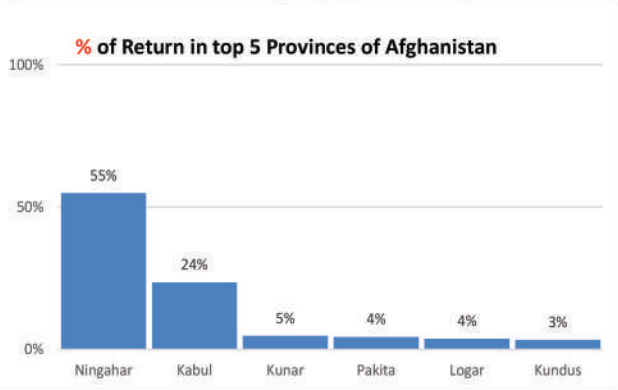
### Overall Average Transportation Cost Paid (HH)

18,304 PKR

Until the final destination in Afghanistan

10,426 PKR

Until a transit point in Afghanistan



Presently, flow monitoring has only been established at the **Torkham Border**.