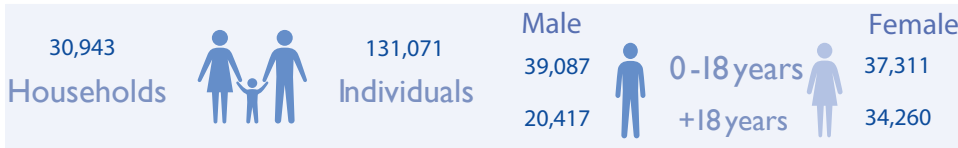
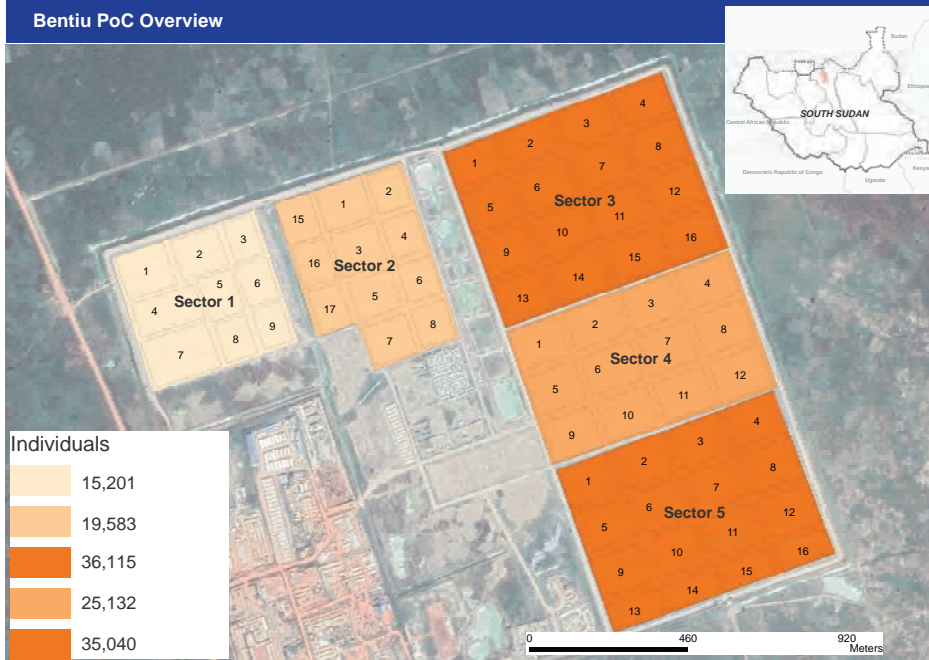


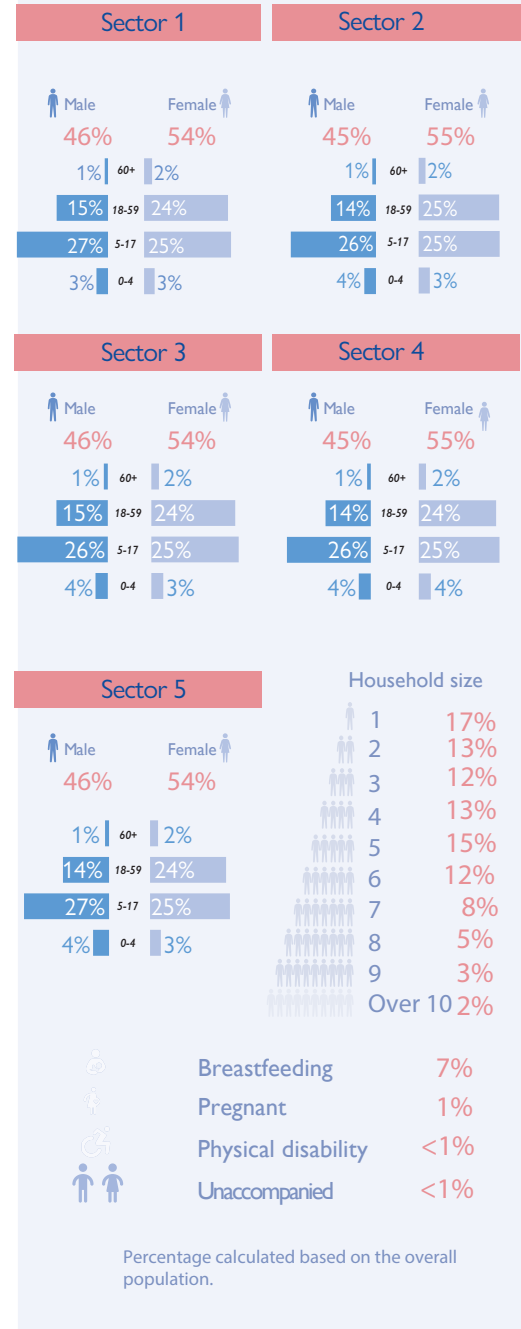
Registration Site



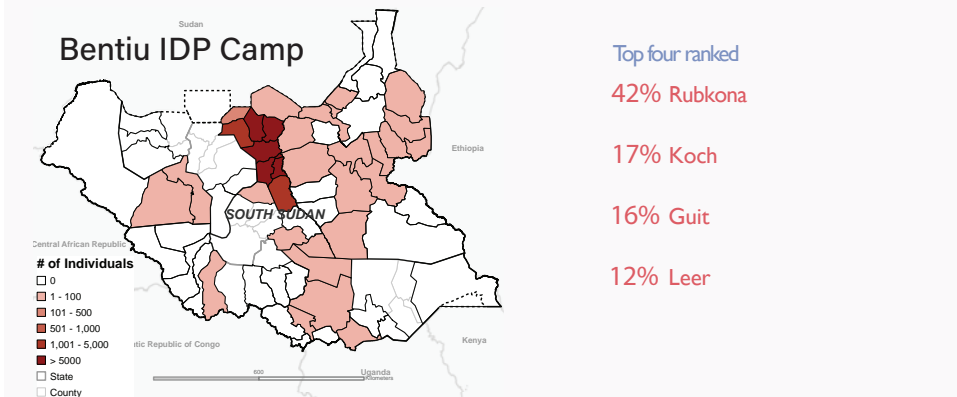
The International Organization for Migration (IOM) Displacement Tracking Matrix (DTM) team in South Sudan maintains biometric registration database in Bentiu IDP Camp (previously Protection of Civilian Site - PoC). During maintenance IOM carries out registration of new born babies, replacement of lost cards, merging of households that have requested to be included under one household and handling of referred protection cases from protection partners. In December 2020 the population of IDPs in the five sectors comprised a total of 131,071 individuals (30,943 households).

About 58 per cent of the registered population were found to be youths under the age of 18 years, while 55 per cent were female. Sector 3 in Bentiu PoC site is most populated with 36,115 individuals representing 28 per cent of the population while Sector 1 is the least populated with 15,201 individuals representing 12 per cent of the population. Since biometric registrations or verifications are not feasible monthly, population counts remain the best possible tool to estimate the sites' populations.

Population profile



Number of individuals per County of habitual residence



Most of the registered individuals in Bentiu IDP Camp arrived from locations within Rubkona followed by those who arrived from Koch County. A minority arrived from other locations in South Sudan. The adjacent map represents the habitual residence for 115,056 out of 131,071 registered individuals.

For further information, contact DTM South Sudan at southsudandtm@iom.int

DTM IS SUPPORTED BY



The names and boundaries on the maps in this document do not imply official endorsement or acceptance by the Government of South Sudan or IOM. This document is for planning purposes only. IOM cannot guarantee that this document is error free and therefore will accept no liability for consequential and indirect damages arising from the use of this product.