

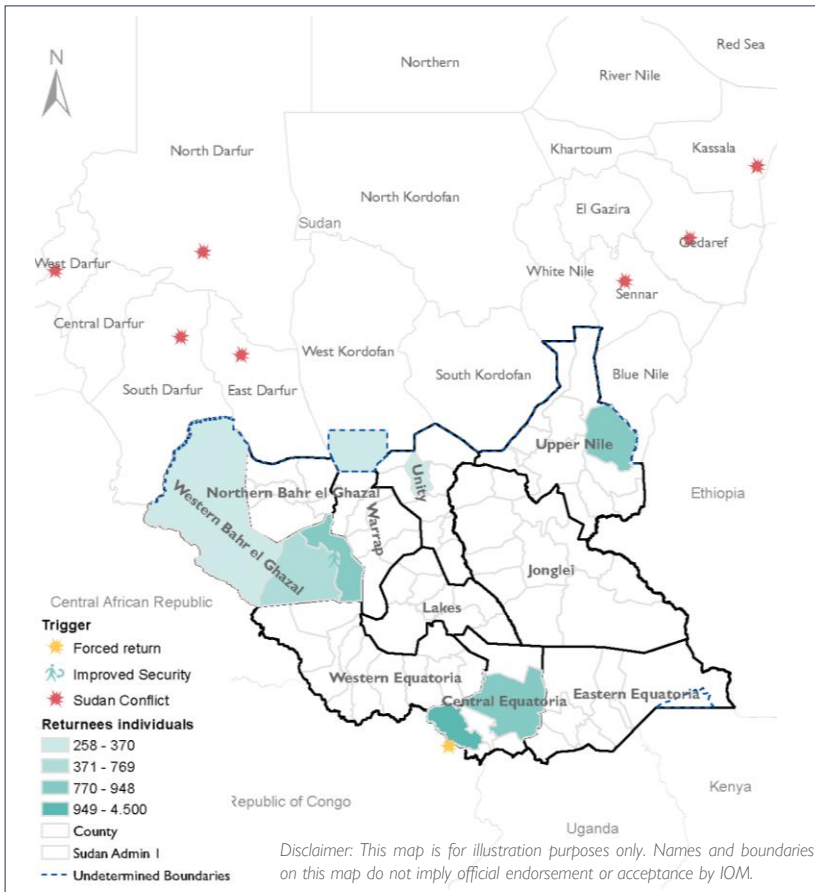
### HIGHLIGHTS

In South Sudan, a complex humanitarian crisis is unfolding due to various factors such as communal conflicts, land disputes, insecurity, violence, natural disasters, and displacement across borders.

Between 1st and 15th July 2024, 8,834 returnees arrived in different counties within the country. Half of the returns (51%) were forced to return from the Democratic Republic of Congo (DRC) due to violence against civilians, 38 percent were displaced from Sudan because of the ongoing Sudan crisis, and seven percent returned due to improved security conditions in their destination areas in South Sudan.

The influx of returnees has led to urgent humanitarian needs among the affected population. The top three immediate requirements identified by the returnees are access to shelter, food, and health services in their respective locations of return.

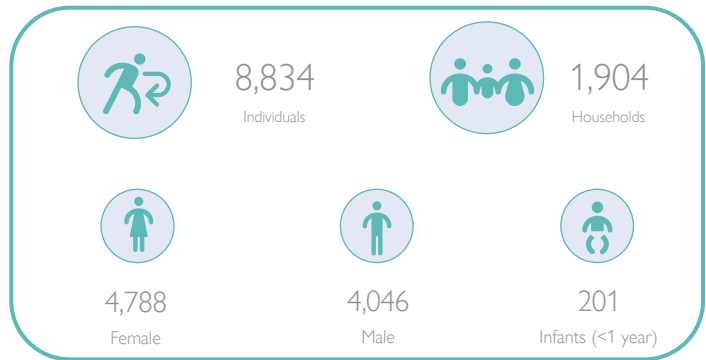
### MAP - RETURNS



### METHODOLOGY AND CONTEXT

The Event Tracking tool is a rapid displacement tracking system that collects data on over 50 households' movements through assessments by DTM staff and local enumerators. Information is gathered via direct visits or interviews with key informants, cross-referenced with secondary sources for accuracy. The data reflects the situation at the time of assessment, and while efforts are made to ensure accuracy, comprehensive coverage nationwide cannot be guaranteed by the International Organization for Migration (IOM).

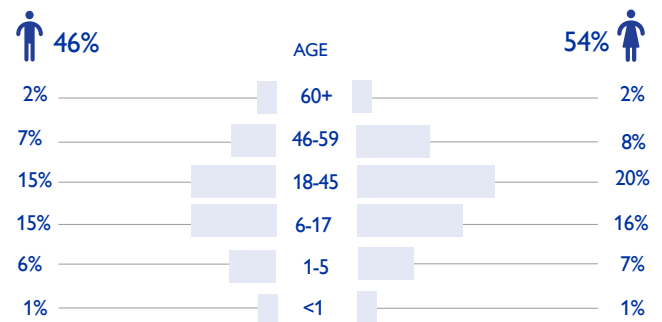
### KEY DATA ON RETURNS



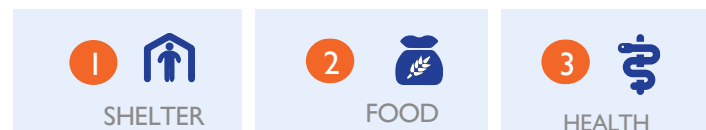
### RETURN FIGURES

COUNTY	MALE	FEMALE	TOTAL	TRIGGER
Abyei AA	118	140	258	Sudan Conflict
Juba	451	418	869	Sudan Conflict
Jur River	412	536	948	Improved Security
Maban	442	418	860	Sudan Conflict
Raja	180	190	370	Sudan Conflict
Rubkona	125	135	260	Sudan Conflict
Wau	378	391	769	Sudan Conflict
Yei	1,940	2,560	4,500	Forced Return
<b>Total</b>	<b>4,046</b>	<b>4,788</b>	<b>8,834</b>	

### DEMOGRAPHICS



### TOP THREE PRIORITY NEEDS RANKED



The identification of current needs involves gathering insights from key informants regarding the existing challenges or gaps within this specific context and determining their priority.