



IOM's Displacement Tracking Matrix (DTM) continued conducting Displacement Site Flow Monitoring (DSFM) at the gates of Wau Masna Collective Centre. In the third quarter of 2021, 2,462 interviews were conducted representing 4,248 individual movements in and out of the collective centre. Day movements saw a 26 per cent increase relative to the previous quarter. These movements were mainly driven by male travelers (62%), and the main reasons for travel were to tend to livelihood activities (29%) and to look for better health services (11%). Temporary movements saw a 12 per cent decrease compared to the previous quarter with the main reason being farming / fishing (48%). Ninety-three per cent of the individuals traveling temporarily intend to spend at least more than six months in / out of the collective centre. The third quarter recorded a significant decrease in new arrivals from 284 in the previous quarter to 7 individuals. Eighty-six per cent of the individuals who newly arrived in the collective centre moved because of hunger due to conflict, and 14 per cent due to insecurity related to conflict in their areas of departure. All individuals intend to spend more than six months at the centre. DTM did not encounter persons intending to permanently leave the collective centre this reporting period.

Methodology: Displacement Site Flow Monitoring (DSFM) involves interviewing a cross-section of persons passing through the site's entry and exit points. DTM aims to provide partners with a better understanding of mobility dynamics into and out of the sites categorized as same-day movement, temporary (overnight) travel, new entries and (intended) permanent exits. Interviews are conducted seven days a week from 8 a.m. to 5 p.m. DSFM provides indicative traveller profiles rather than comprehensive or representative estimates.

September Population Count

3,471 ind. (926 households)

1,506 (49%) Male

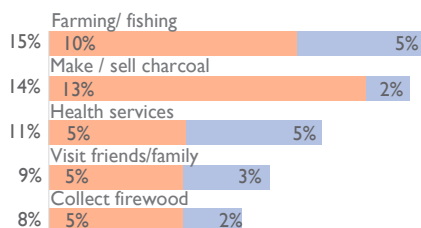
1,965 (51%) Female

Same-Day Travel n = 3,987



Most common reason: Farming / fishing

Top reasons for same day movement



Reasons continued: Other livelihood activity (7%), religious service (5%), education (5%), collect elephant grass (4%), to buy things (4%), food distribution on-site (4%), access to cash (4%) and other (10%).

Daily gate count

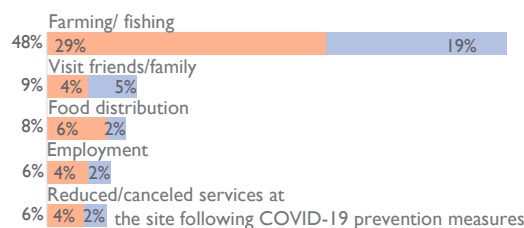
Gate count is not being conducted at Wau Masna collective centre

Temporary Travel n = 254



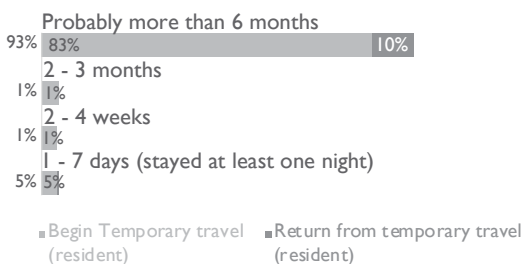
Most common reason: Farming / fishing

Top reasons for temporary movement



Reasons continued: Leaving temporarily to avoid the congested site as I'm concerned about COVID-19 (6%), check on / repair property (3%), education (3%), health services (2%), and other (9%).

Intended period of stay / time spent away

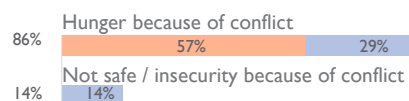


New Arrivals n = 7



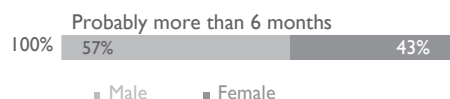
Most common reason: Hunger because of conflict

Top reasons for new arrival



No other reasons were recorded.

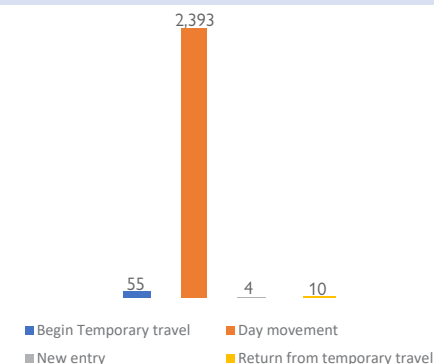
Intended period of stay at the centre



Permanent Exits n = 0

DTM enumerators did not record individuals who intended to permanently exit Masna Collective Centre during the data collection exercise for the third quarter of 2021.

Interviews at Wau Masna Collective Centre



Type & top destinations of permanent exit

Type of Destination	% of permanent exit	Main location by nature destination
Former area but new home	-	-
New home, different area	-	-
Former area but new home	-	-
Other displacement site	-	-

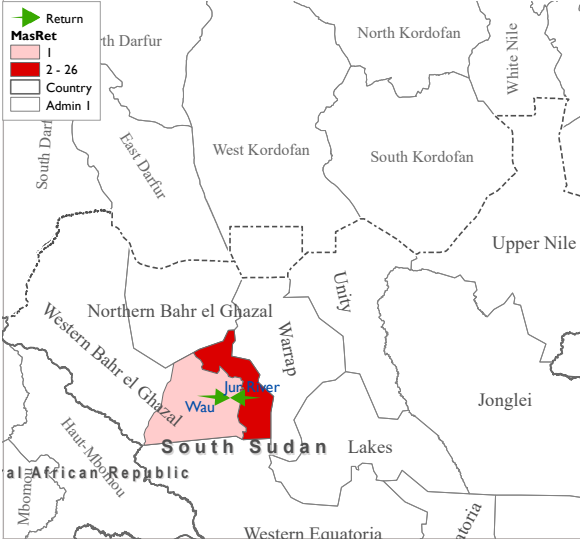
¹Disclaimer: [Rounding] Percentages may not add up to 100% as a result of rounding error.



Movement Dynamics

Return from temporary travel

n = 27

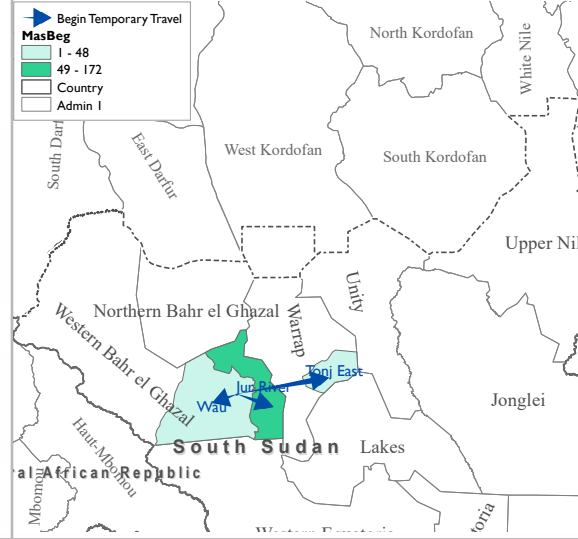


Counties of departure

Jur River	96%
Wau	4%

Embarking on temporary journey

n = 227



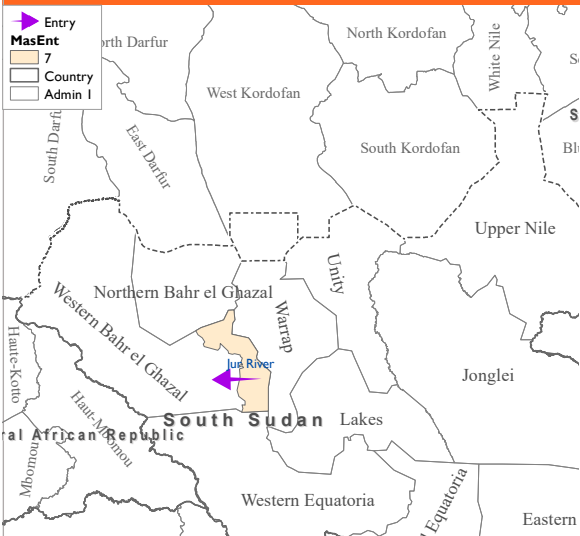
Counties of intended destination

Jur River	76%
Wau	21%
Tonj East	3%

The maps above do not include same-day travel, which tends to be limited to the immediate surroundings of the site.

New arrivals

n = 7



Counties of departure

Jur River	100%
-----------	------

Permanent exits

n = 0

DTM enumerators did not record individuals who intended to permanently exit Masna Collective Centre during the data collection exercise for the third quarter of 2021.