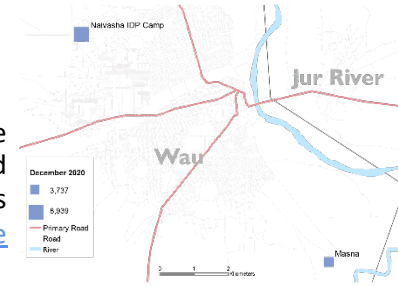


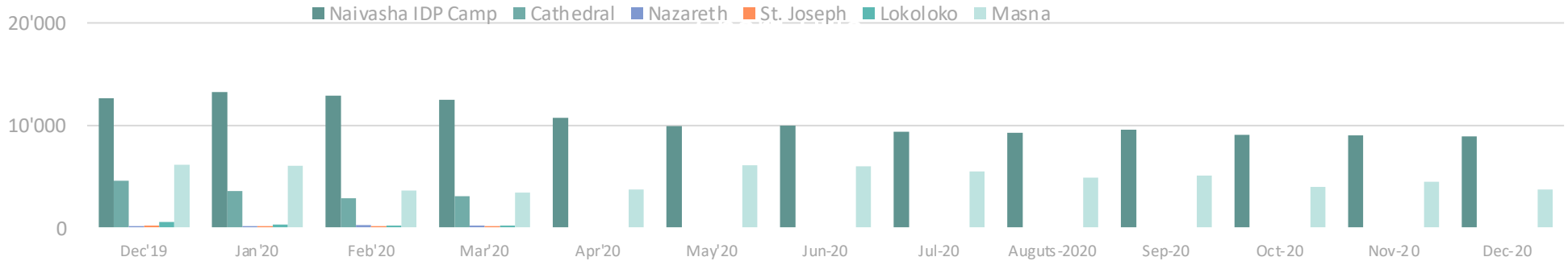
POPULATION COUNT: Naivasha IDP Camp & Masna Collective Centre

Data collection December 2020



In December 2020, the monthly population count was conducted at **Masna collective centre where 3,737 individuals/775 households** were identified and **Naivasha IDP Camp with 8,939 individuals/2,651 households**. The population of Naivasha IDP Camp marginally decreased from 9,048 individuals in November 2020 (decreased by 109 individuals). Wau Masna saw a decrease in its population by 773 individuals since November 2020. For more information on these trends, please consult the DSFM report for [Naivasha IDP Camp](#) and [Masna Collective Center](#).

Monthly trend in Naivasha IDP Camp and Wau collective centres, December 2019 – December 2020



Population by zone and block, Naivasha IDP Camp (December 2020)

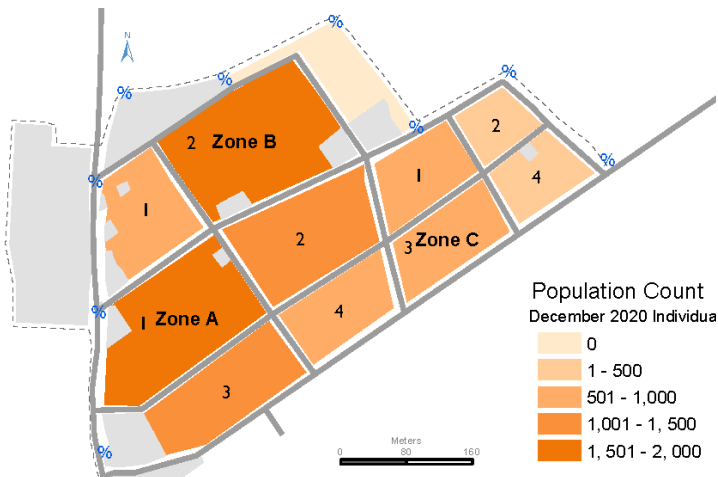
8,939 individuals

2,651 household

52% Zone A

26% Zone B

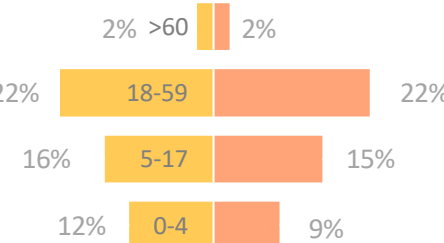
22% Zone C



Naivasha IDP Camp & Masna Collective Centre by age and sex (December 2020)

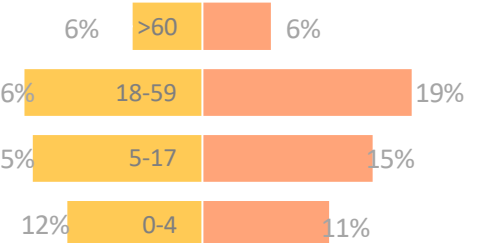
Naivasha IDP Camp : 8,939 individuals

52% Male **48%** Female



Masna Collective Centre: 3,737 individuals

49% Male **51%** Female



Methodology

Since biometric registrations or verifications are not feasible on a monthly basis, population counts remain the best possible tool to estimate the sites' populations. Population counts consist of DTM teams visiting each shelter of the site asking how many persons have slept there the previous night (sex and age disaggregated). This provides a snapshot of the population at the time of the count.